

Division of Air Quality  
State Street Commons, Suite 6A  
100 W. Water Street, Dover 19904



**Request for a Public Hearing**  
Permit# (APC-2021/0011-CONSTRUCTION)  
Atlantic Concrete Company, Inc.

To whom it may concern,

As posted, I'd like to request a hearing for this air permit application. My reasons are:

1. There is enough concern for potential health effects as listed in the application," and I believe the local residents must be aware of potential health effects.

Potential Health Effects

**Relevant Routes of Exposure:**

LEHIGH CEMENT COMPANY

PORTLAND CEMENT MSDS

page 1 of 4

**Skin Contact:**

Exposure to dry product may cause drying of the skin with consequent mild irritation. Dry cement contacting wet skin or exposure to moist or wet cement may cause more severe skin effects including thickening, cracking or fissuring of the skin. Prolonged exposure can cause severe skin damage in the form of (caustic) chemical burns. Minimize skin contact, particularly contact with wet cement. Exposed persons may not feel discomfort until hours after the exposure has ended and significant injury has occurred.

Some individuals may exhibit an allergic response upon exposure to this product, possibly due to trace amounts of chromium. The response may range from a mild rash to severe skin ulcers.

**Inhalation:**

This product may contain trace amounts of free crystalline silica. Prolonged exposure to respirable free crystalline silica can aggravate other lung conditions and cause silicosis, a disabling and potentially fatal lung disease. (Also see "Carcinogenic Potential".)

Exposure to this product may cause irritation to the moist mucous membranes of the nose, throat, and other respiratory system. It may also leave unpleasant deposits in the nose.

**Ingestion:**

Although small quantities of dust are not known to be harmful, ill effects are possible if larger quantities are consumed. This product should not be eaten.

**Carcinogenic Potential:**

This product is not listed as a carcinogen by NTP, OSHA, or IARC. It may, however, contain trace amounts of substances listed as carcinogens by these organizations.

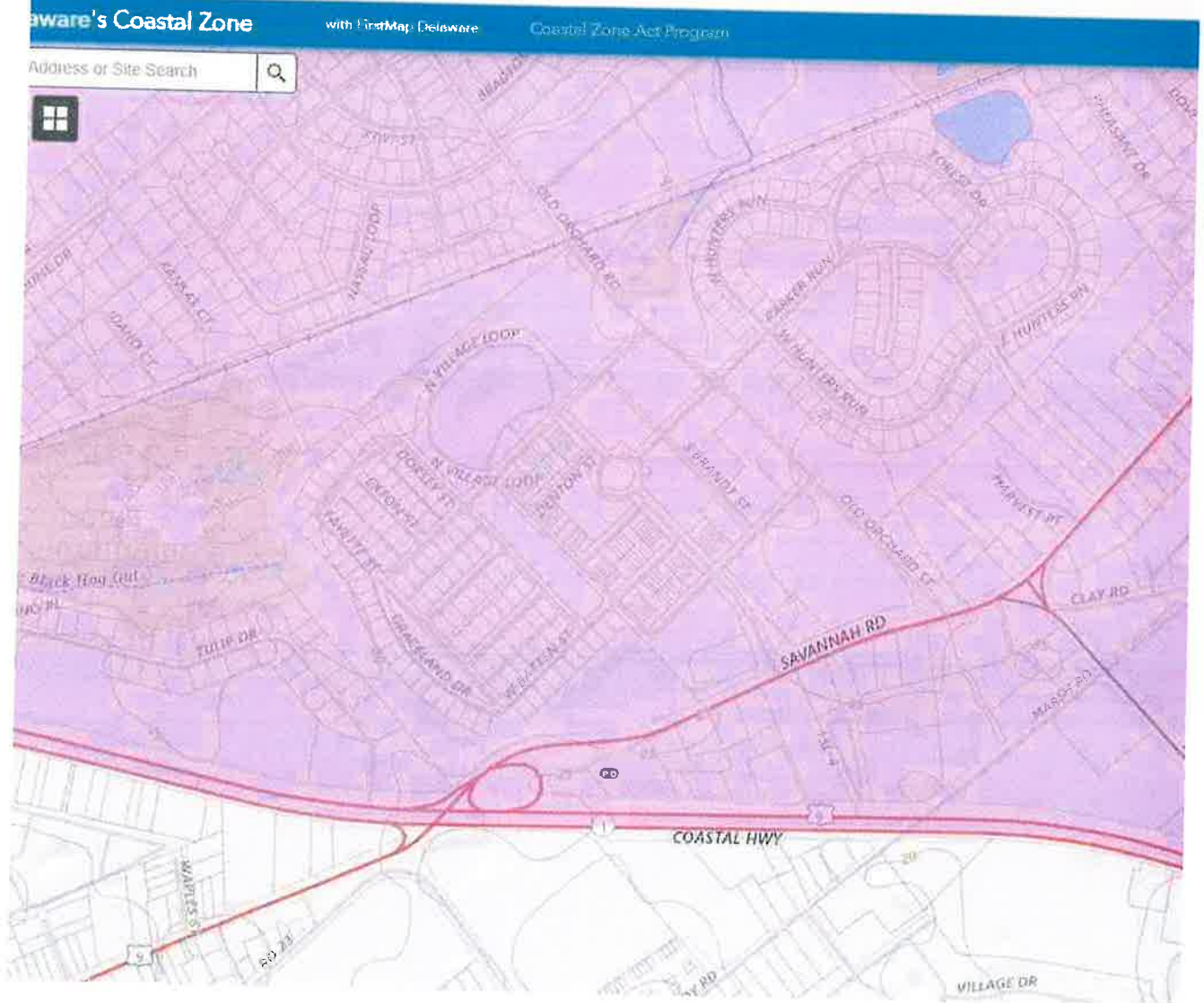
Crystalline silica, a potential trace level contaminant in this product, is now classified by IARC as a known human carcinogen (Group 1). NTP has characterized respirable silica as "reasonably anticipated to be [a] carcinogen".

**Medical Conditions Which May Be Aggravated By Inhalation or Dermal Exposure:**

Pre-existing upper respiratory and lung diseases. Unusual (hyper) sensitivity to hexavalent chromium (chromium<sup>VI</sup>) salts.

2. The application says this site is not in the Coastal Zone. The purple area in the Delaware Coastal Zone Map shows otherwise. This type of oversight can be detrimental in some case.

dnrec.maps.arcgis.com/apps/webappviewer/index.html?id=2bed4349f5594e13bcb215dab5dc7290



3. Bikers on Lewes-Georgetown Trail have been complaining about the dust that force them to cover their nose and mouth. The dust/air regulations must be strict in facilities like that that are surrounded by subdivisions.

Thank you for this opportunity to express my concerns.

Respectfully submitted, hoping USPS will deliver my letter in time,

Eul Lee  
Lewes, DE  
302-945-1663