



DNREC Virtual Public Hearing

Matthew Eisenmann
(Docket #2021-P-W-0006)

Welcome. Any visual content that is part of this hearing will appear in this window.

Computer Audio: Use the audio connections menu to turn audio on or off.

Telephone Audio: DIAL-in Number: 1-408-418-9388

Access Code: 129-109-6845

Comments will be accepted using the DNREC Comment form, via email, or by USPS mail as noted on the hearing event page (de.gov/dnrechearings)

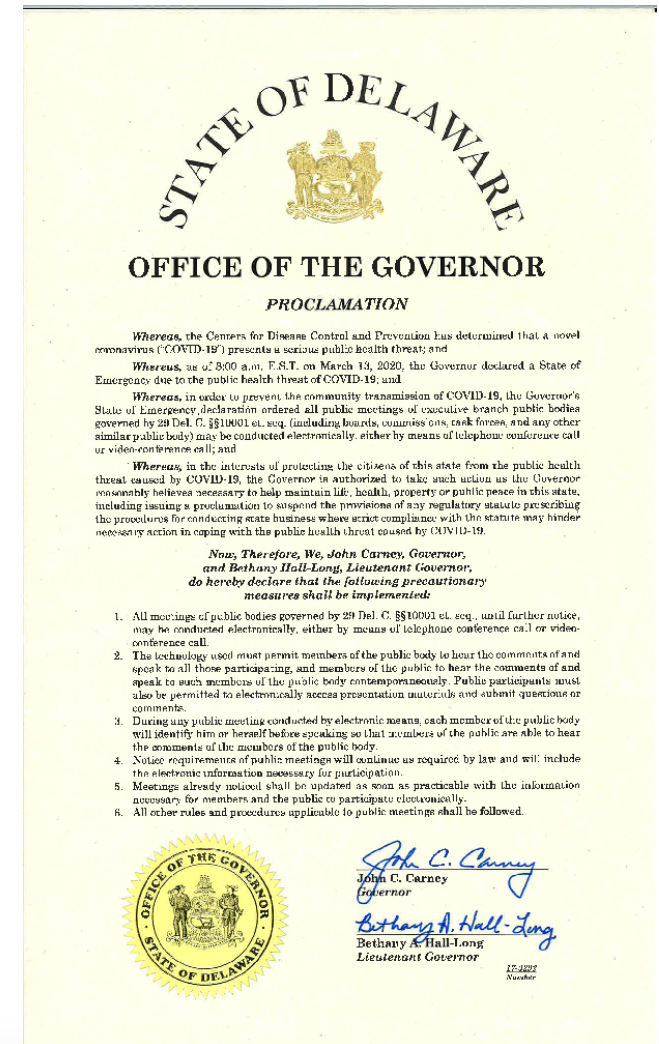


DELAWARE DEPARTMENT OF
NATURAL RESOURCES AND
ENVIRONMENTAL CONTROL

State of Emergency

On March 13, 2020, Governor Carney declared a State of Emergency due to the public health threat of COVID-19.

In order to prevent the community transmission of COVID-19, the Governor's State of Emergency declaration ordered all public meetings of executive branch public bodies governed by 29 Del. C. §§10001 et. seq. to be conducted electronically, either by means of telephone conference call or video-conference call to prevent unnecessary public gatherings



Purpose of Public Hearing

To provide the public an opportunity to comment on Matthew Eisenmann's application to construct and utilize a residential pier extension, floating dock, and boatlift.

Subaqueous Lands Lease

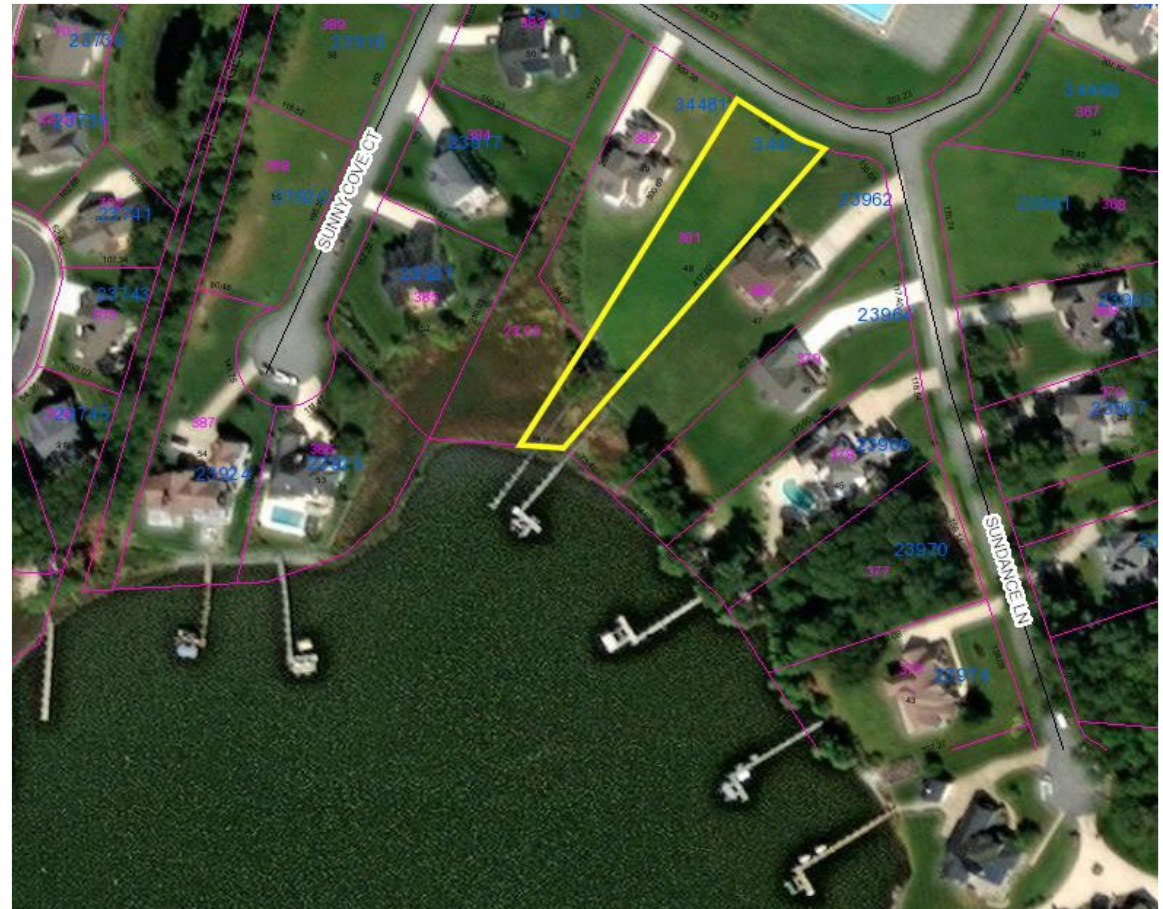


Project Location



Project Location

Located on Tax Parcel
#2-34-18.00-381.00
at 34477 Skyler Drive, Lewes,
Sussex County, DE

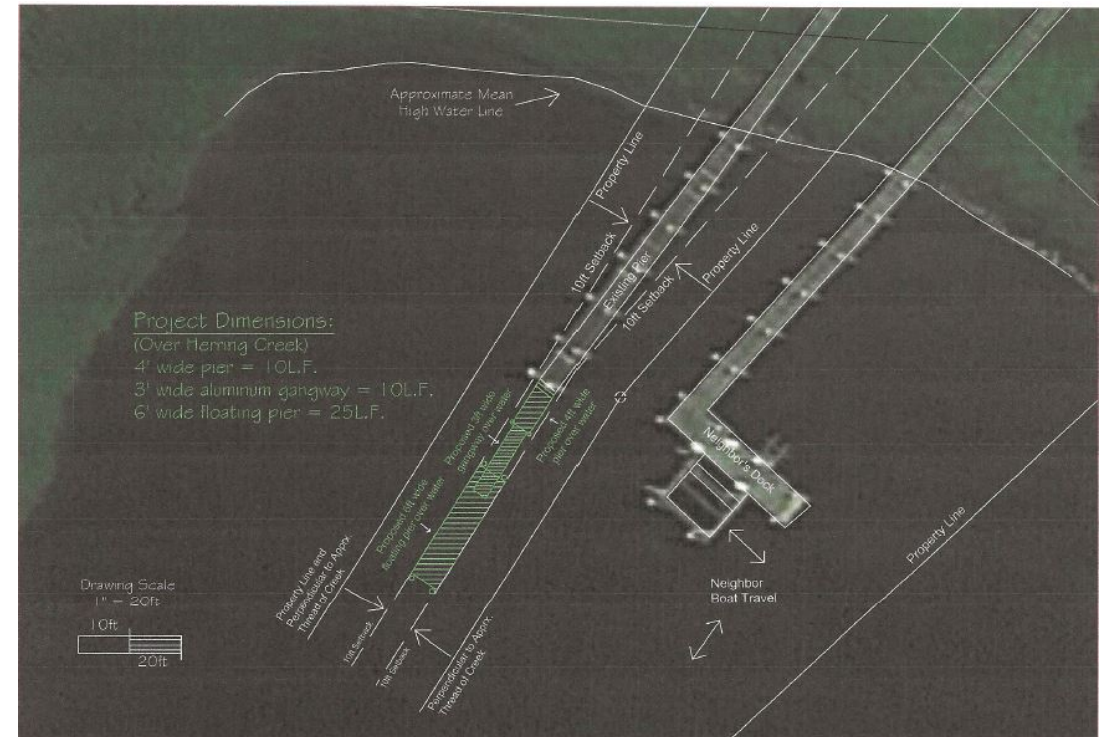
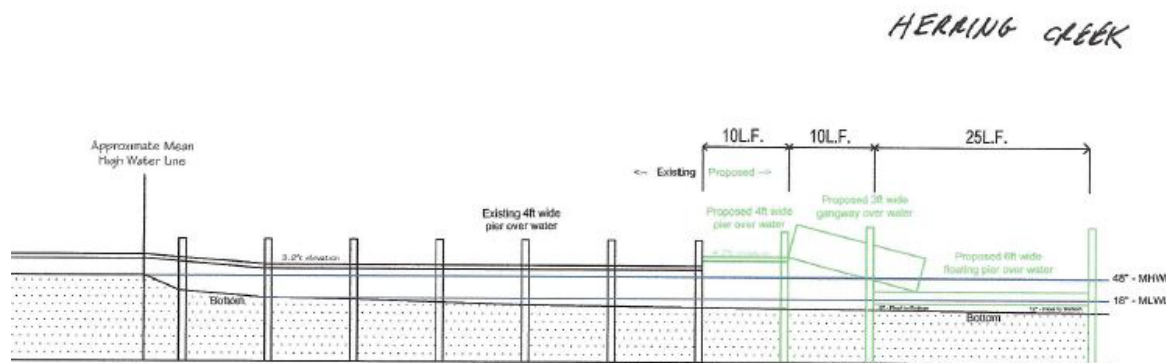


Initial Project Overview

Construct a 4 foot wide by 10 foot long fixed pier extension

Install a 3 foot wide by 10 foot long gangway

Install a 6 foot wide by 25 foot long floating platform



Public Notice

The project was placed on a 20 day public notice period published in The Delaware State News and the News Journal from May 13, 2020 to June 2, 2020

- Received four written comments in objection
 - Comments beyond the scope of Chapter 72 subaqueous jurisdiction were resolved externally

Regulatory Review

DNREC Division of Water, Wetlands and Subaqueous Lands Section

- Interpretation of property lines extended
- Equitable apportionment of water access for riparian landowners within the cove

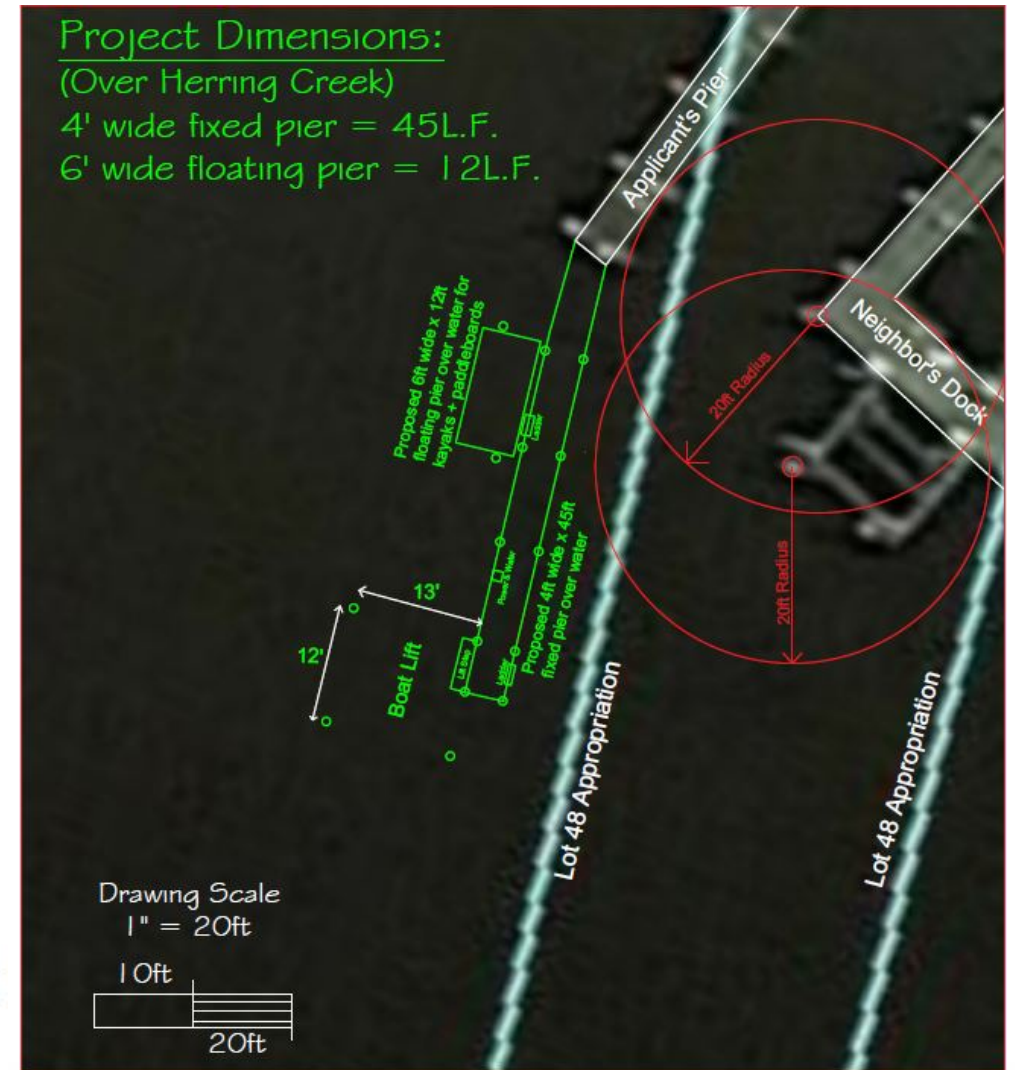
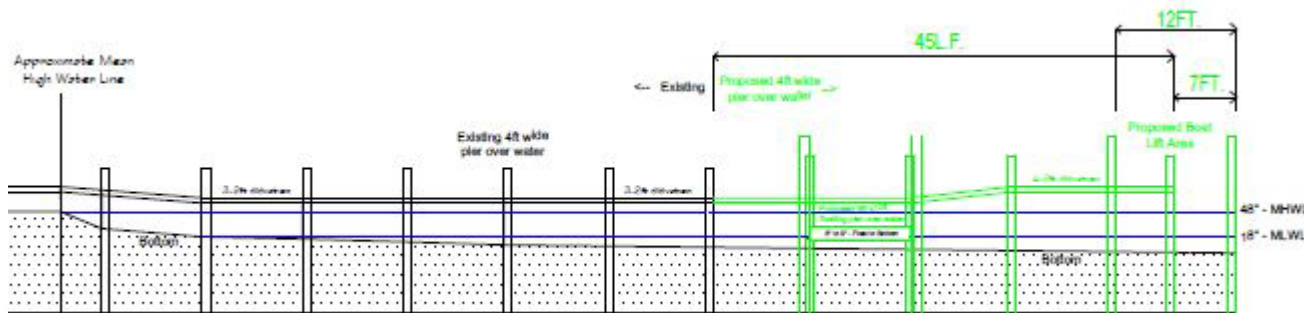


Final Project Overview

Constructing a 4 foot wide by 45 foot long fixed pier

Installing a 6 foot wide by 12 foot long floating platform on the west side of the pier

Install a boat lift at the end of the fixed pier on the northwest side



DNREC Virtual Public Hearing

Matthew Eisenmann (Docket #2021-P-W-0006)

Thank you for joining us. We will accept comments on this matter through June 3, 2021. Comments may be submitted in writing via:

- Comment form (de.gov/dnrecomments),
- Email (DNRECHearingComments@delaware.gov), or
- USPS to Theresa Newman, Hearing Officer, DNREC Office of the Secretary, 89 Kings Highway, Dover, DE 19901

A copy of the Court Reporter's full, verbatim transcript will be posted on this hearing's web event page as soon as it becomes available.

For more information, access the event page at de.gov/dnrehearings.