

Testimony on Behalf of MAACH Opposing Bioenergy DevCo Anaerobic Digester

Anna Quisel <annaquisel@gmail.com>

Wed 10/26/2022 7:02 PM

To: HearingComments, DNREC (MailBox Resources) <DNRECHearingComments@delaware.gov>

To the Department of Natural Resources,

First, thank you for conducting public hearings on this matter.

I am a medical doctor and a member of the Mid-Atlantic Alliance for Climate and Health. As a coalition of health care providers we have observed the damaging impact of burning fuels on human health especially on communities already facing environmental injustice, who are usually living in the vicinity of combustion sources such as this biogas facility, factories or vehicular traffic in urban areas. The problem is that burning fuels creates health-damaging air pollution so it is important to focus our resources on non-combustion based forms of energy such as solar and wind and others.

Regarding **air pollution** from burning fuels - the methane produced from this plant will be burned either in a flare at the plant or shipped away, in both cases the burning of methane will produce volatile organic compounds, nitrogen oxides and secondary PM2.5 all of which which cause a wide range of health problems from asthma to cardiovascular disease to lung cancer. Medical organizations such as the American Lung Association have begun to alert regarding the health hazards of methane fuel (<https://www.lung.org/blog/methane-gas-pollution>).

Regarding **environmental justice**, the CDC has identified the area of the proposed biogas plant as an area of the highest social vulnerability due to socioeconomic status, household composition and race, language and ethnicity (see map below). This means that the neighbors to this facility face the most risk for suffering health consequences due to lack of resources for addressing medical issues ranging from time to money to availability of healthcare practitioners. If this biogas facility were to be built, a new location in a less socially vulnerable area should be considered. For these reasons we oppose the creation of biogas and this proposed biogas facility.

Signed, Anna Quisel M.D.

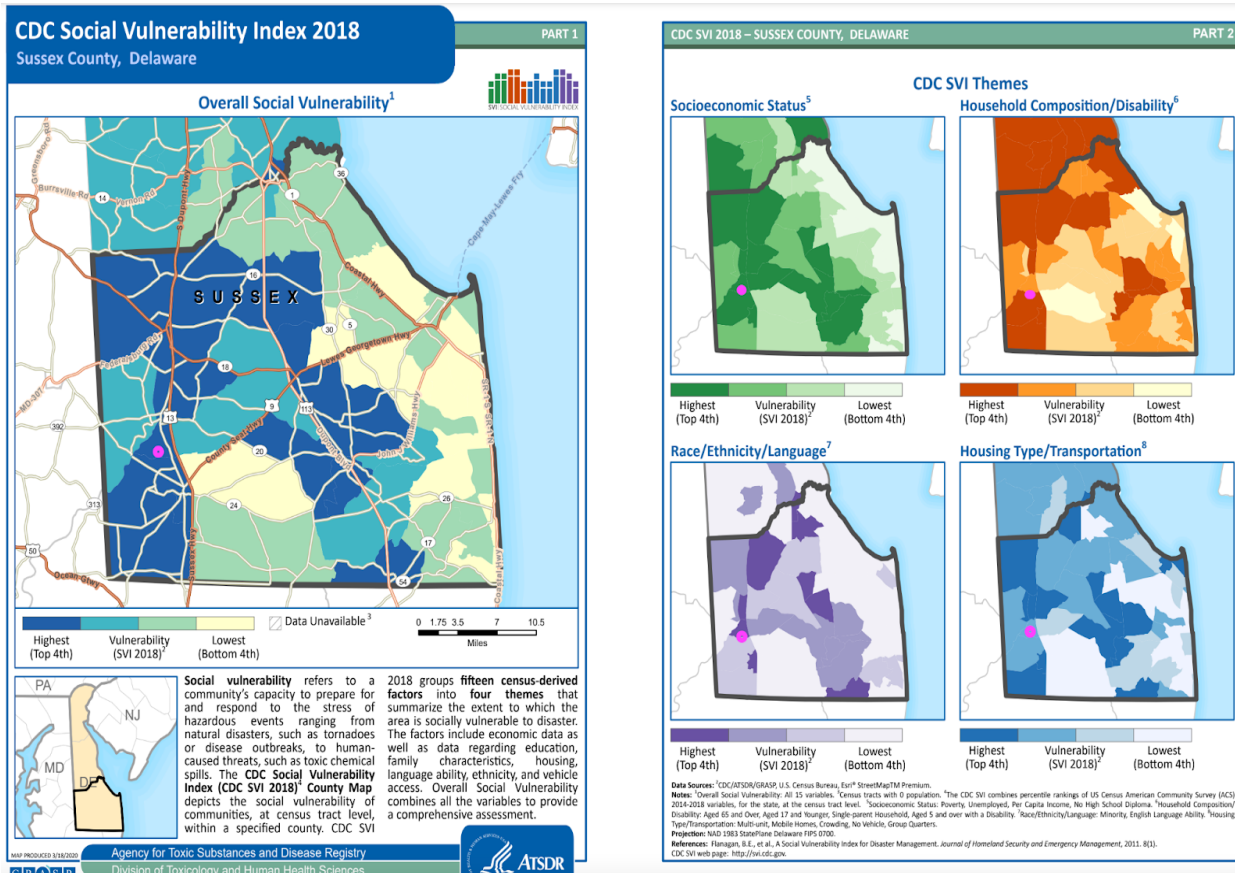


Figure: Map with proposed anaerobic digester/biogas plant at 23383 Enviro Way, Seaford DE noted with hot pink circle (Graphic from https://svi.cdc.gov/Documents/CountyMaps/2018/Delaware/Delaware2018_Sussex.pdf)