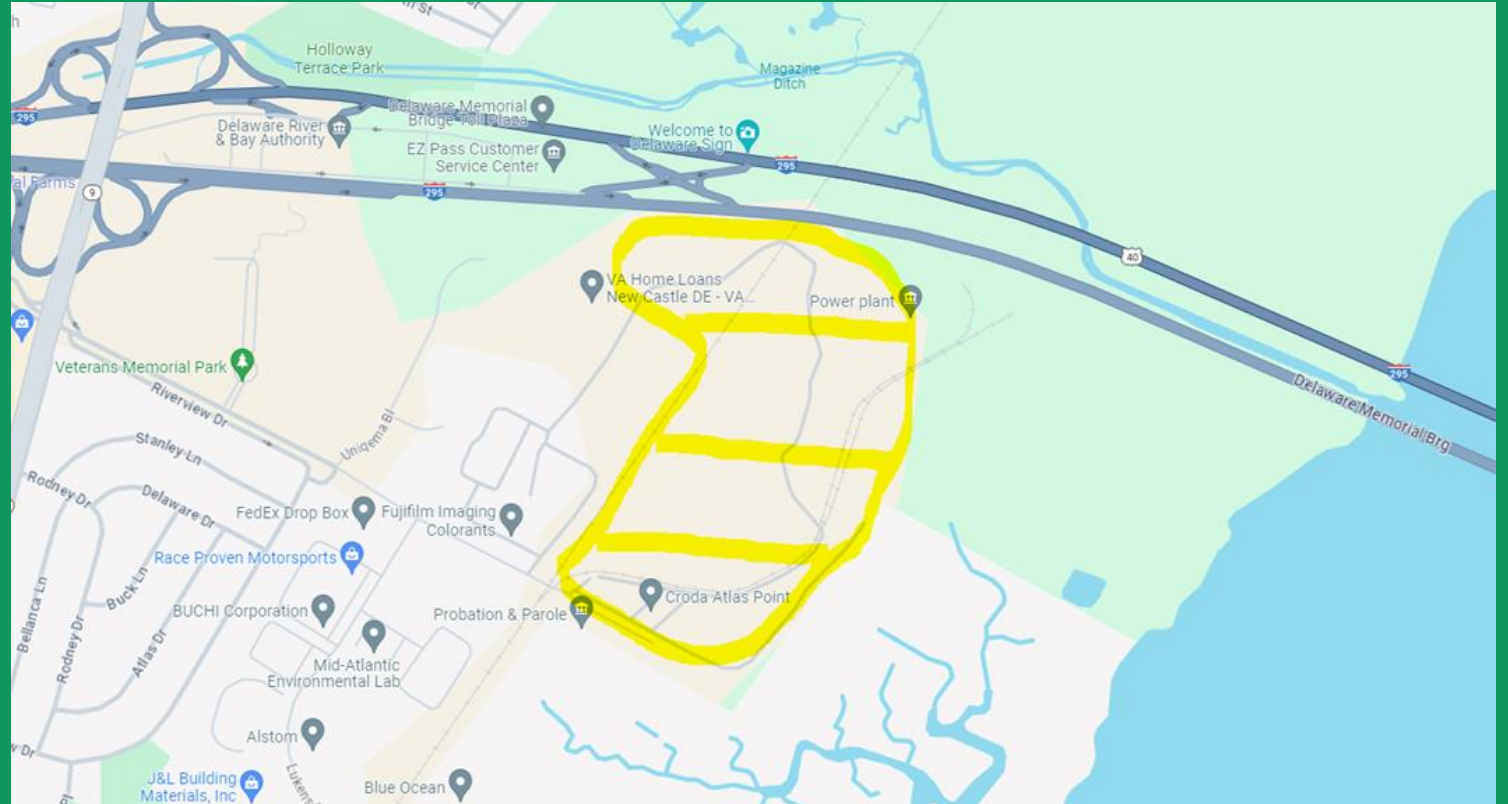


Croda International Plc: Atlas Point



Site Overview

- Atlas Point: In operation since 1937
- Croda purchased in 2006
- 12 Operating Production Units
- Main Product – Surfactants – Help Things Mix Together
 - cosmetics, lotions, soaps, hair treatments
 - cleaners, detergents
 - mixing agents for crop protective materials
 - oil additives, lubricants



Atlas Point Information

- **Community**
 - Colonial School System (STEM and Outreach)
 - Rosehill Community Center
 - Food Bank of Delaware
- **General Information and Contact**
 - Croda AP Website <https://www.croda.com/en-gb/about-us/where-we-operate/north-america/usa/atlas-point>
 - Community Info Line – 302-429-5474
 - AtlasPoint.CE@Croda.com
 - **CAC**



Colonial School District
Partnership Recognition

Replacement Boiler

Replacing existing boiler from 1940s end of life

Primary fuels are natural gas and landfill gas recovered from Cherry Island Landfill

Backup Fuel is #2 Fuel Oil (used to heat homes)

Best available control technology used for NOx emissions

Ultra Low NOx burner technology

Flue Gas Recirculation

Overall emissions for community will be reduced vs older existing boiler

3rd party expert modeling completed

Meets or exceeds EPA and DNREC regulations



Firewater Pumps

2 pumps with engines to be installed

Only to be used for emergency

Powered by stationary diesel engines

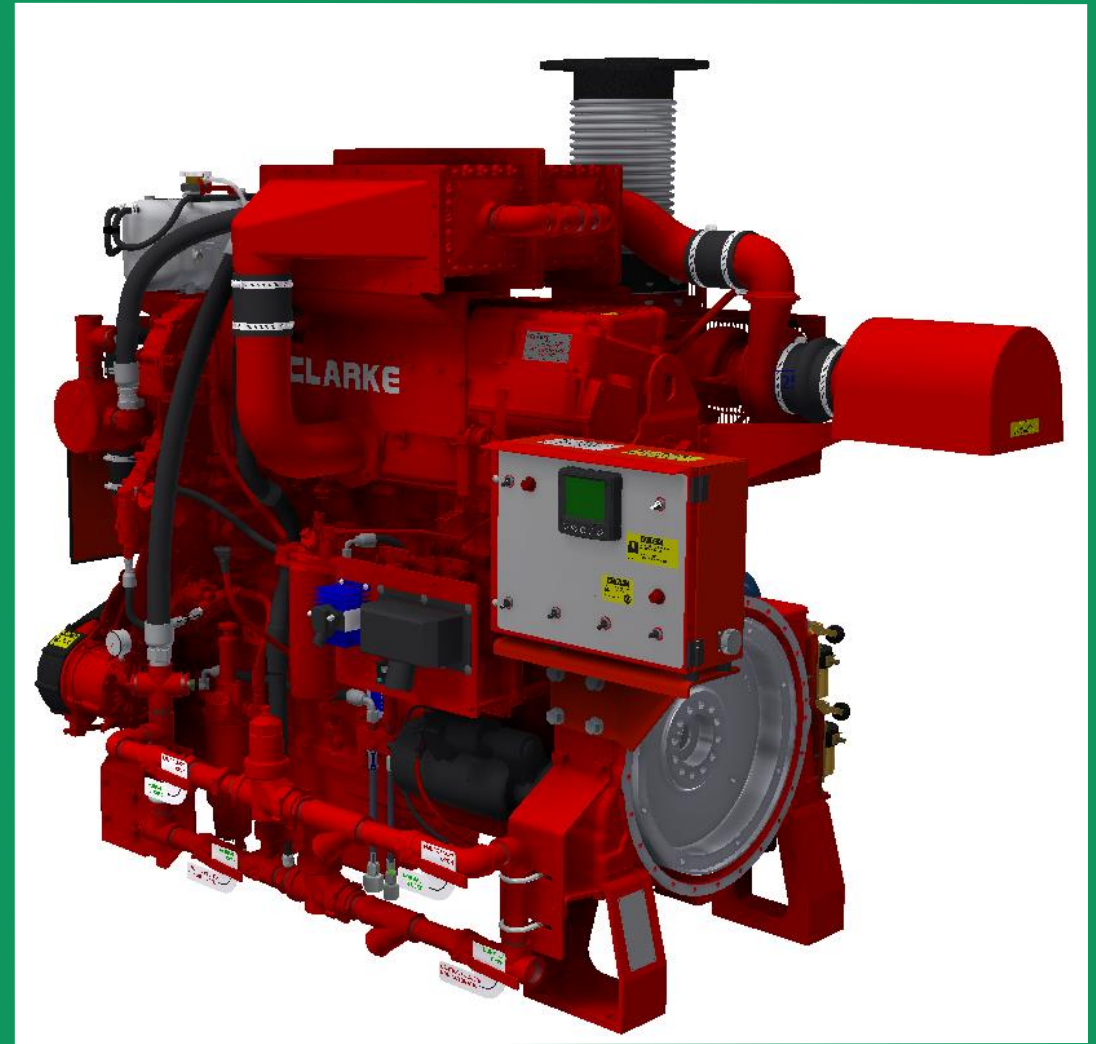
Engines are more reliable than electric motors

Minimal Emissions, similar to a Semi Truck motor

Latest engine technology used

Meets NFPA requirements

Meets or exceeds EPA and DNREC regulations



CRODA



Health & Safety



Sustainability



Innovation

Thanks for listening