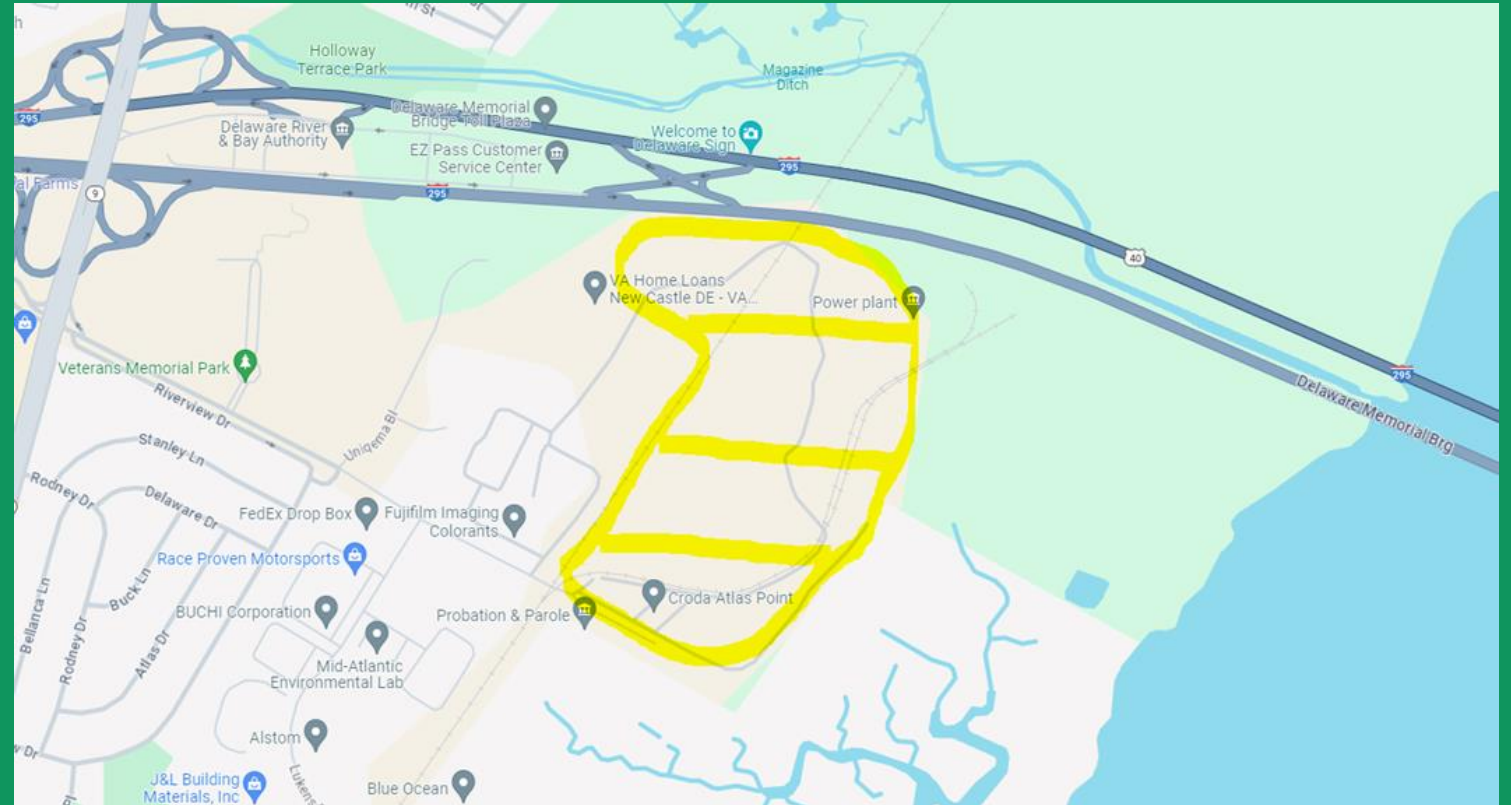


# Croda International Plc: Atlas Point



# Site Overview

- Atlas Point: In operation since 1937
- Croda purchased in 2006
- 12 Operating Production Units
- Main Product – Surfactants – Help Things Mix Together
  - cosmetics, lotions, soaps, hair treatments
  - cleaners, detergents
  - mixing agents for crop protective materials
  - oil additives, lubricants



# Atlas Point Information

- Community Engagement
  - Colonial School District (STEM and Outreach)
  - Rose Hill Community Center
  - Food Bank of Delaware
- General Information and Contact
  - Croda AP Website <https://www.croda.com/en-gb/about-us/where-we-operate/north-america/usa/atlas-point>
  - Community Info Line – 302-429-5474
  - [AtlasPoint.CE@Croda.com](mailto:AtlasPoint.CE@Croda.com)
  - Community Advisory Council



**New Castle County Science Fair  
Croda Award**



## What is a Flare?



*This is a representation of a flare during use.  
Image used with permission courtesy of [CleanAir.com/tag/flares/](https://www.CleanAir.com/tag/flares/)*

- A flare is a piece of equipment that burns VOCs, converting them to CO<sub>2</sub> and reducing VOC (Volatile Organic Compound) emissions by 98%.
- VOCs are in thousands of products that you use daily, including cosmetics, paints, and cleaning supplies.

## Why is Croda Building a Flare?



*This is a representation of a flare during use.  
Image used with permission courtesy of [CleanAir.com/tag/flares/](https://www.CleanAir.com/tag/flares/)*

- Croda is committed to reducing our environmental footprint and being a good neighbor. While not required by regulators, we would like to reduce the environmental impacts from malfunctions or upset conditions.
- This flare is not being built in anticipation of new emissions releases. We recognize our neighbors want reduced emissions and this is the most effective way to significantly reduce VOC emissions.

View from Northbound I-295



New Flare



## Where will the Flare be Located

- The flare will be located on the Northeast side of the facility. This photo is taken from the Delaware Memorial bridge going from Delaware into New Jersey looking to the right.



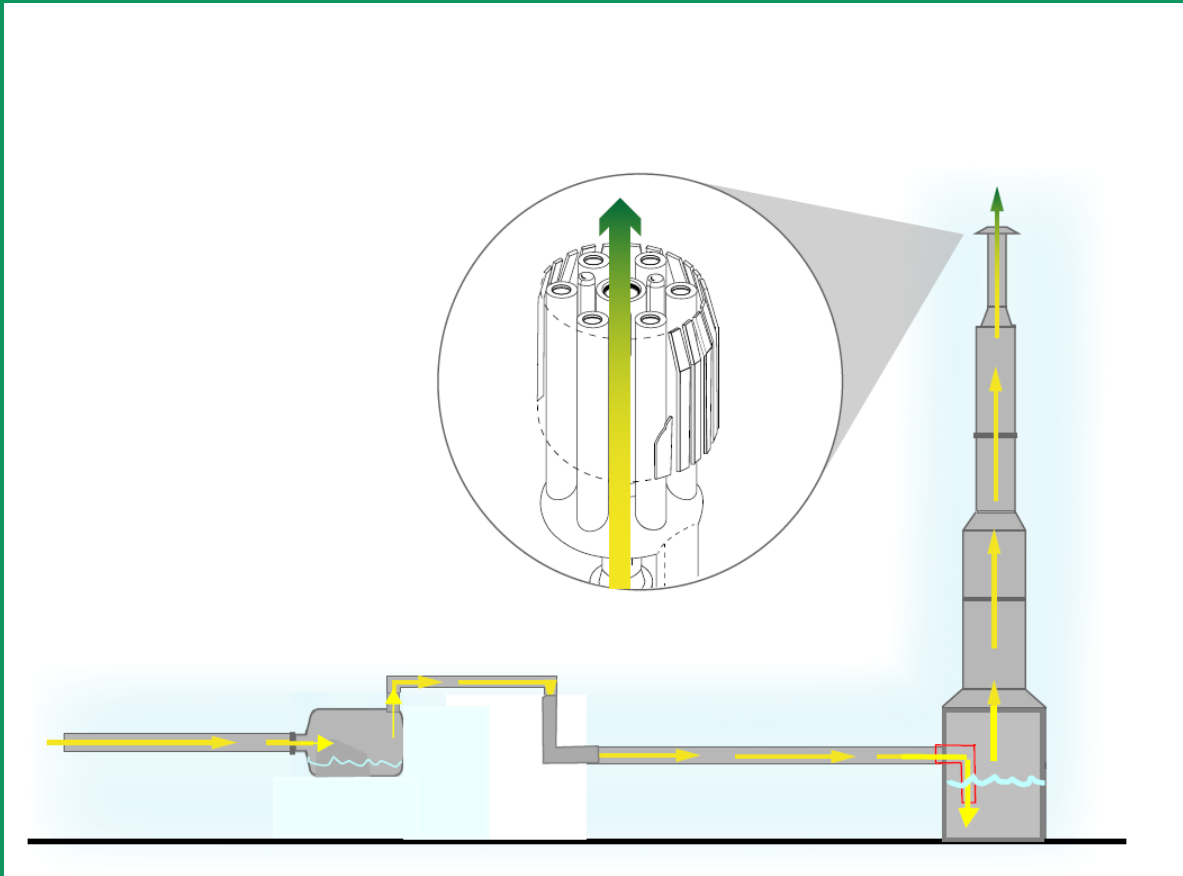
# View from Northbound I-295



New Flare



# Flare



## How do Flares Work?

Basically, the flare system acts as an environmental relief valve for the plant collecting vapors, combining with steam and burning them off. This system ensure maximum combustion of hydrocarbons while minimizing emissions into the air

## *Will I hear anything?*

Normally, no, but occasionally during a flare activity you may hear a rumbling sound from the mixture of air, vapors, and steam

## *Will I see anything?*

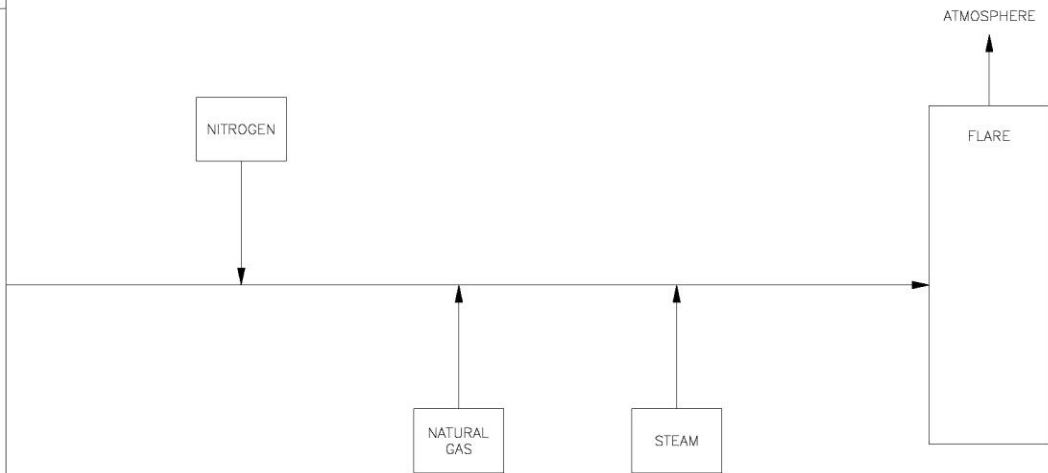
Normally, no, but occasionally if at night you may see a flame or during the day you may see some black smoke. Plant personnel will constantly be watching the flare system via television monitors to adjust steam to decrease smoke

## *When would anything ever go to the flare?*

Only during upset conditions like loss of electricity or equipment failure or emergency conditions will vapors be sent to the flare



STARTUP/SHUTDOWN/MALFUNCTION FEED FLARE	
T115	PSV-1750, PSV-1751
T220	XV-2210B
T310	PSV-3200, PSV-3201
C320	PSV HEADER [MULTIPLE PSVs]
D320	PSV-3410, PSV-3411
T320	PSV-3301, PSV-3302, PSV-3322B
D430	PV-4206
T430	PSV-4201, PSV-4202, XV-4281
D431	PSV-4206, PSV-4207
D1210	XV-12202B
E1220	PSV-12100, PSV-12101
D1260	PSV-12610, PSV-12611
R1260	PSV-12602, PSV-12603
T1270	PSV-12700, PSV-12701
U1280	PSV HEADER [MULTIPLE PSVs]
T1290	PSV-12901, PSV-12902
D1410A	PSV-14110, PSV-14111, PV-14115B
D1410B	PSV-14120, PSV-14121, PV-14125B
SAMPLE VENTS	FV-3423, V-9177, V-4292
EO TRANSFER LINE	SV-14156, XV-14166, P-14151



Atlas Point Site AP-FORMAT-B.dwg

NO.	DATE	BY	APP.	PROJ.	REVISION	SCALE	NONE
A	09/18/20	SJB			INITIAL DESIGN	DATE	09/23/20
B	10/19/20	SJB			ISSUED FOR HAZARD STUDY 2	BY	SJB
C	03/12/21	SJB	RNJ	KJW	ISSUED FOR CLIENT APPROVAL	SITE	ATLAS PT.
D	04/07/21	SJB	RNJ	KJW	ISSUED FOR DESIGN	BLDG.	
E	07/08/21	RND	RNJ	ACI 19549	ISSUED FOR DESIGN	PROJ.	ACI19549
F	01/30/23	SJB	CH	ACI 19549	ONGOING PROJECT RELATED REVISIONS	APP.	
G	04/15/24	SJB	CH	ACI 19549	ONGOING PROJECT RELATED REVISIONS	APP.	
THIS DESIGN IS THE PROPERTY OF CRODA. THE INFORMATION AND KNOW-HOW HEREIN MAY NOT BE USED, NOR MAY THE DRAWINGS BE REPRODUCED EXCEPT WITH THE WRITTEN PERMISSION OF CRODA. REPRODUCTION IN WHOLE OR IN PART, INCLUDING VENDOR'S SHOP DRAWINGS, SHALL BEAR THIS NOTICE.						APP. FOR CONST.	
						DATE	
						SIZE	DRAWING NUMBER
						B	684 54 219
							REV.
							G
							04/15/24

**CRODA**

ETHYLENE OXIDE PLANT  
EO FLARE  
BLOCK FLOW DIAGRAM

C:\Users\spencer.beckett\Downloads\WorkArea\68454219.dwg - 4/15/2024 12:34:08 PM DWG To PDF.pc3

# CRODA



Health & Safety



Sustainability



Innovation

Thanks for listening