

**Project Location**









**Project Location**

**McCORMICK  
TAYLOR**

<b>Revisions</b>

<b>WORCESTER COUNTY</b>		
<b>OPERATIONS AND MAINTENANCE FACILITY PIER INSTALLATION</b>		
<b>LOCATION MAP</b>		
SCALE: 1" = 2,500'	DATE: AUGUST 2023	PLATE 01 of 08

**LEGEND**


-  Mean High Water Elevation (0.82')
-  Mean Low Water Elevation
-  18 inch Bulkhead Repair
-  New Timber Fender System
-  New Timber Fender System and Wave Screen
-  New Cleat
-  Estuarine Subtidal Unconsolidated Bottom (E1UBL) - Permanent Impact
-  Limit of Federal Channel

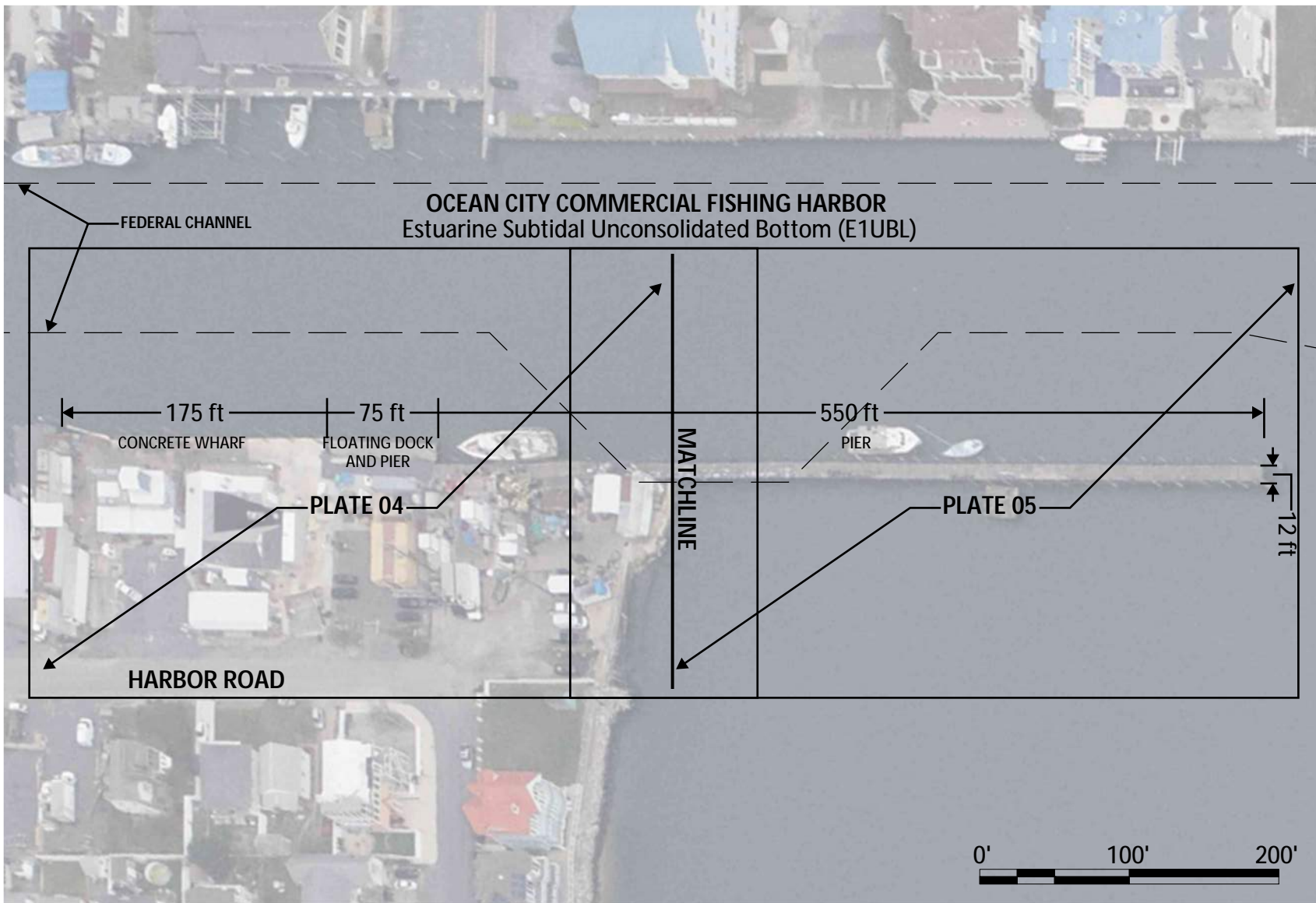
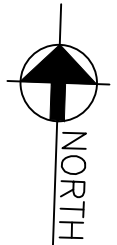
**Operations & Maintenance Facility**

Plate Number	Name	Permanent Impact (SF)		
		Bulkhead	Pier	TOTAL
04	Estuarine Subtidal Unconsolidated Bottom (E1UBL), Section C-C	262	438	700
04	Estuarine Subtidal Unconsolidated Bottom (E1UBL), Section B-B	390	6,130	6,520
05	Estuarine Subtidal Unconsolidated Bottom (E1UBL), Section A-A	--	12,480	12,480
<b>Totals</b>		<b>652</b>	<b>19,048</b>	<b>19,700</b>

**NOTES**

- No dredging is proposed for construction or operation of the pier as shown herein.
- Bulkhead repairs will be performed by placing sheet piling a maximum of 18 inches beyond the existing face and filling the void between the two before being capped. The cap overhang will be approximately 6 inches.

	<b>Revisions</b>	<b>WORCESTER COUNTY</b>		
		<b>OPERATIONS AND MAINTENANCE FACILITY PIER INSTALLATION</b>		
		<b>LEGEND AND NOTES</b>		
		NOT TO SCALE	DATE: AUGUST 2023	PLATE 02 of 08



US WIND, INC.  
BALTIMORE, MD

**Revisions**



**WORCESTER COUNTY**

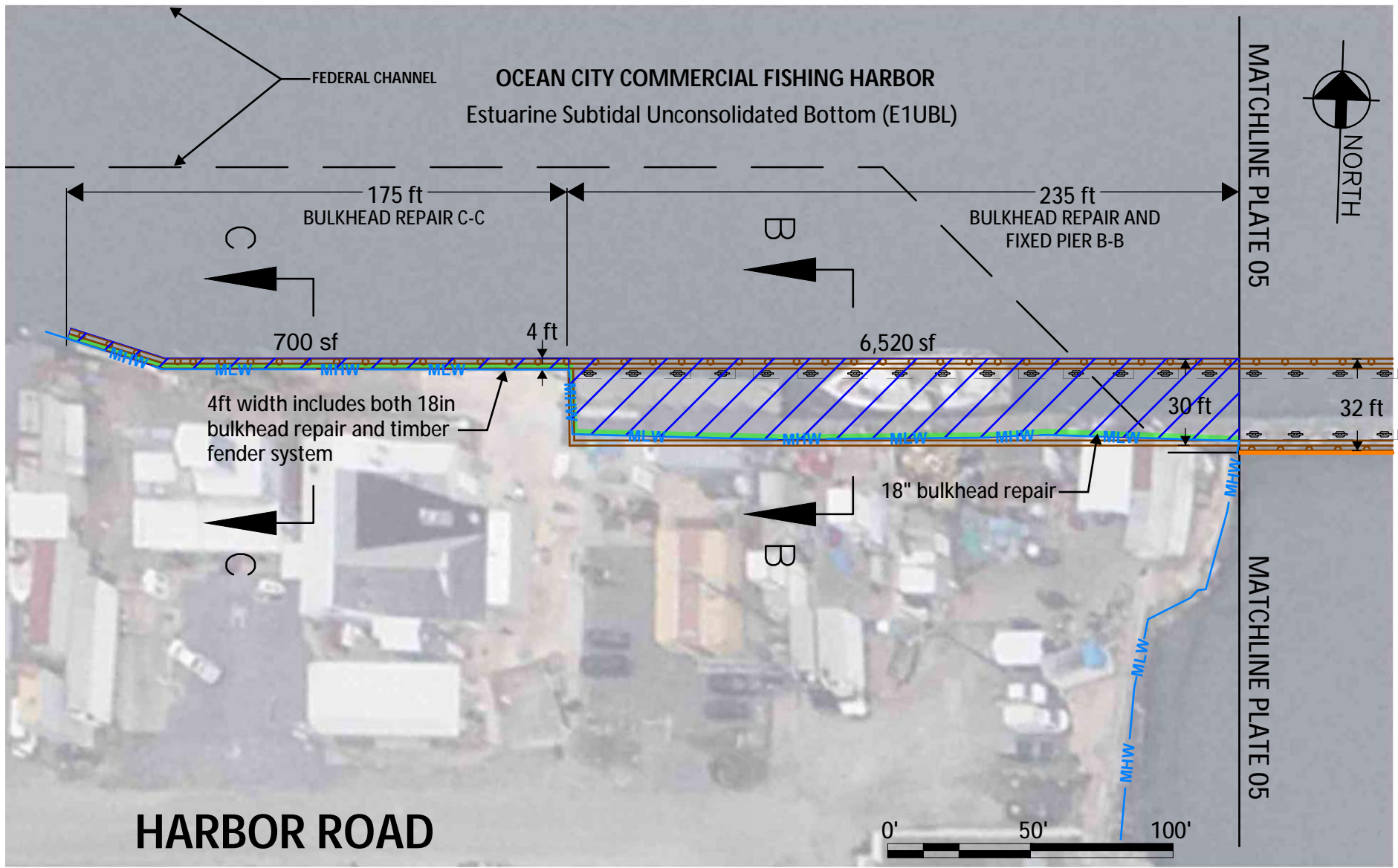
**OPERATIONS AND MAINTENANCE FACILITY  
PIER INSTALLATION**

**EXISTING CONDITIONS**

SCALE: 1" = 100'

DATE: AUGUST 2023

PLATE 03 of 08



US WIND, INC.  
BALTIMORE, MD

**Revisions**

**WORCESTER COUNTY**

**OPERATIONS AND MAINTENANCE FACILITY  
PIER INSTALLATION**

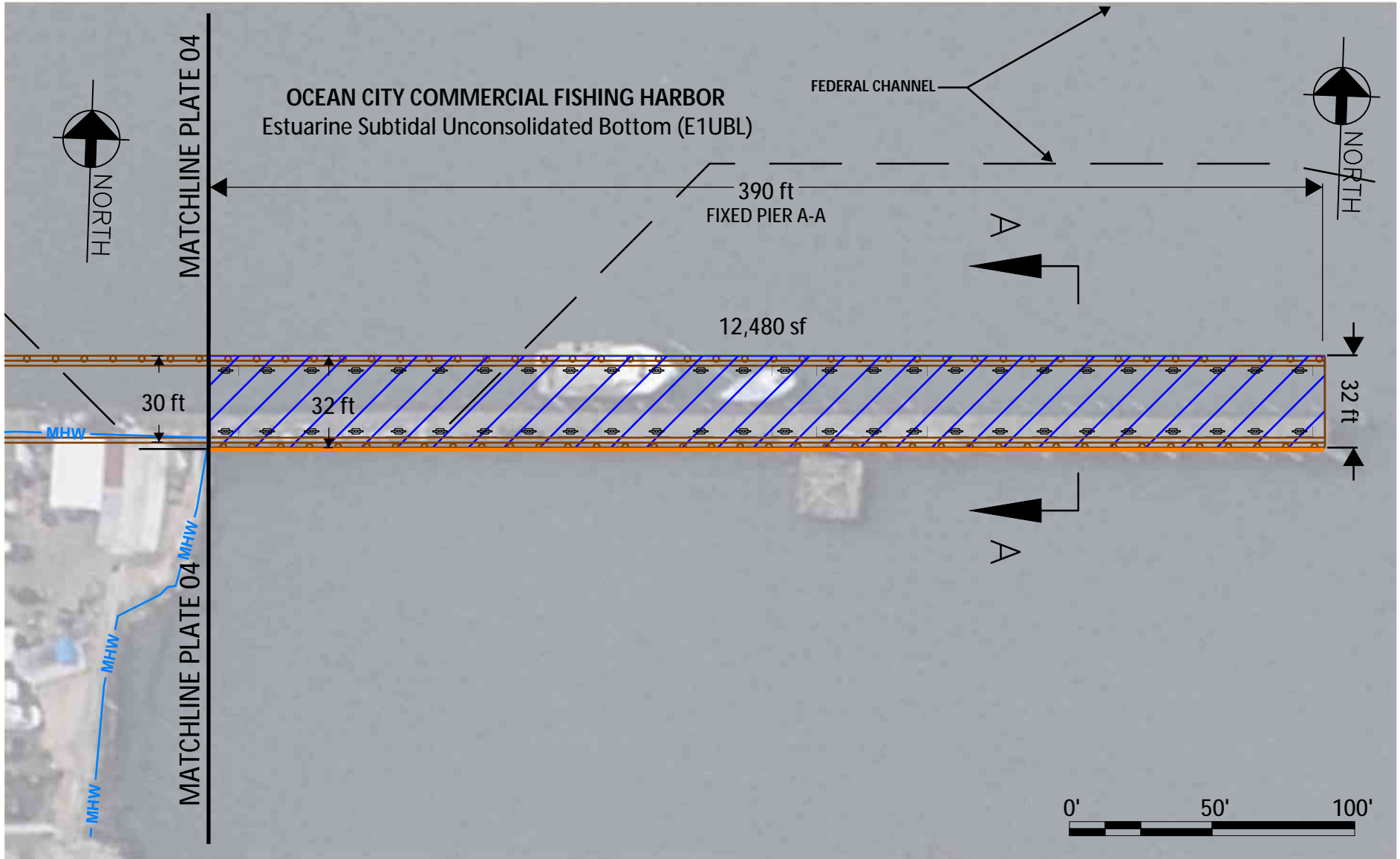


**WETLAND IMPACTS**

SCALE: 1" = 50'

DATE: AUGUST 2023

PLATE 04 of 08



US WIND, INC.  
BALTIMORE, MD

**Revisions**

**WORCESTER COUNTY**

**OPERATIONS AND MAINTENANCE FACILITY  
PIER INSTALLATION**

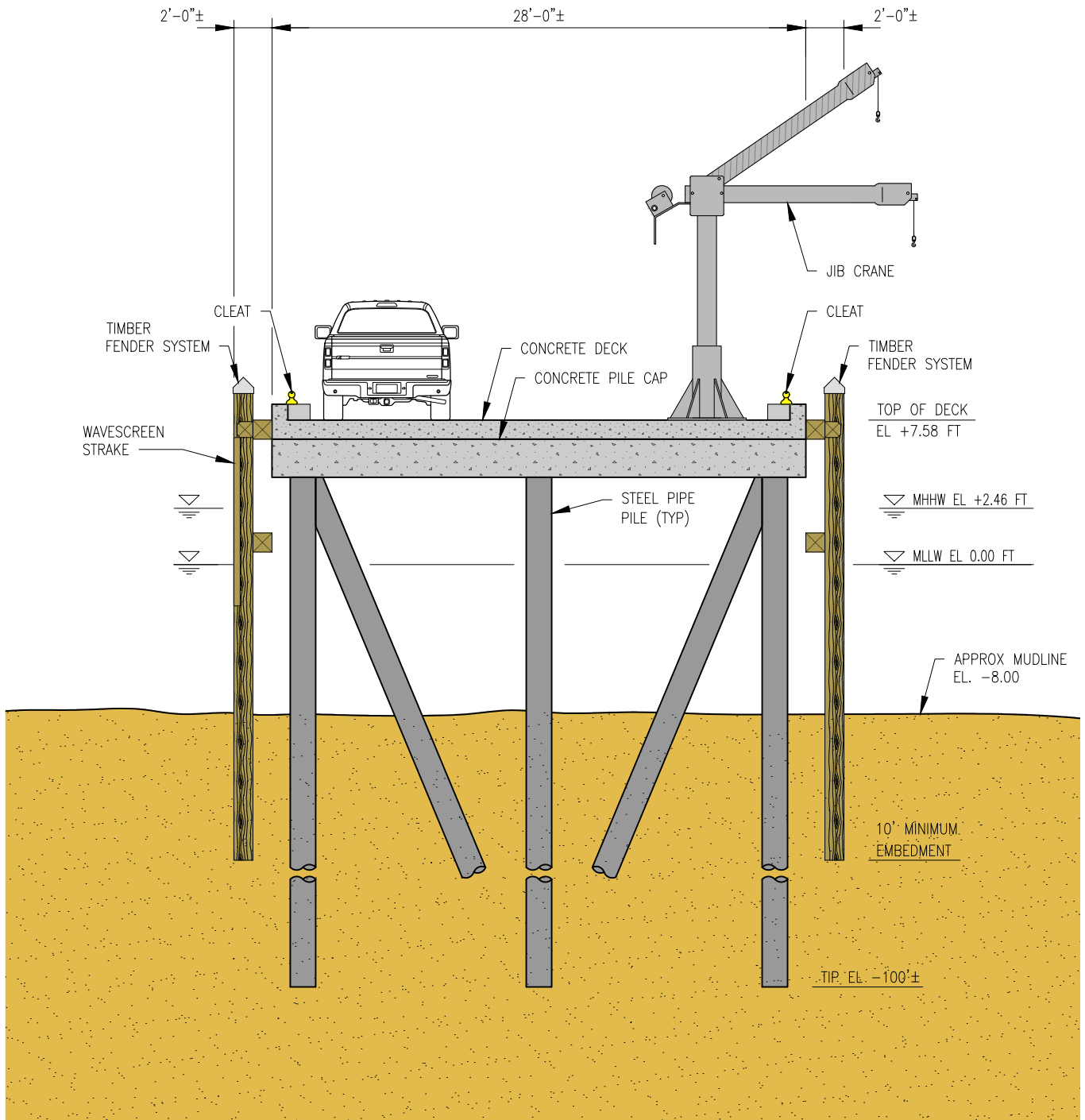


**WETLAND IMPACTS**

SCALE: 1" = 50'

DATE: AUGUST 2023

PLATE 05 of 08



CONCEPTUAL FIXED PIER SECTION A-A



US WIND, INC.  
BALTIMORE, MD



Revisions

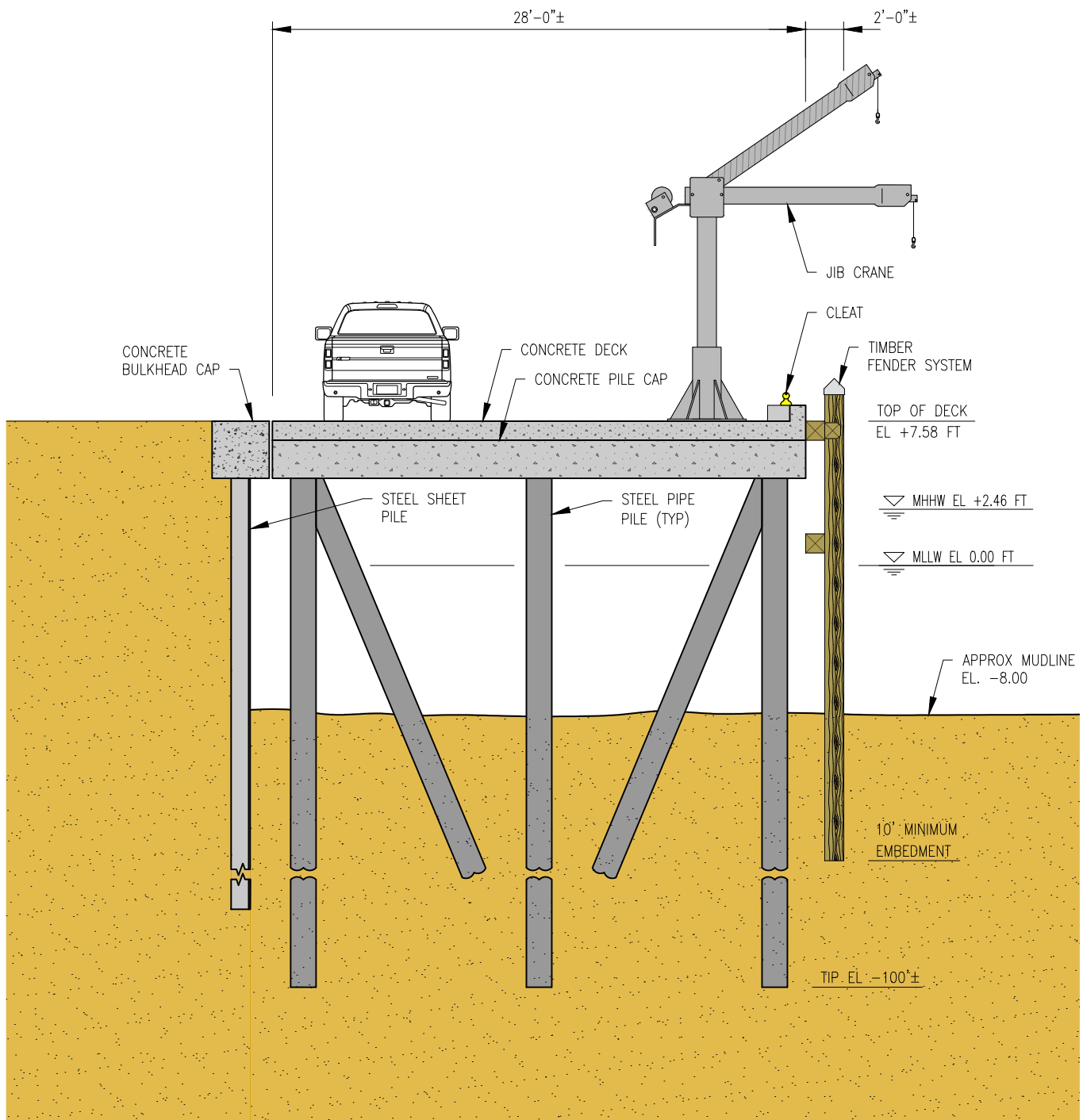
WORCESTER COUNTY

OPERATIONS AND MAINTENANCE FACILITY  
PIER INSTALLATION

NOT TO SCALE

DATE: AUGUST 2023

PLATE 06 of 08



CONCEPTUAL FIXED PIER SECTION B-B



US WIND, INC.  
BALTIMORE, MD



WORCESTER COUNTY

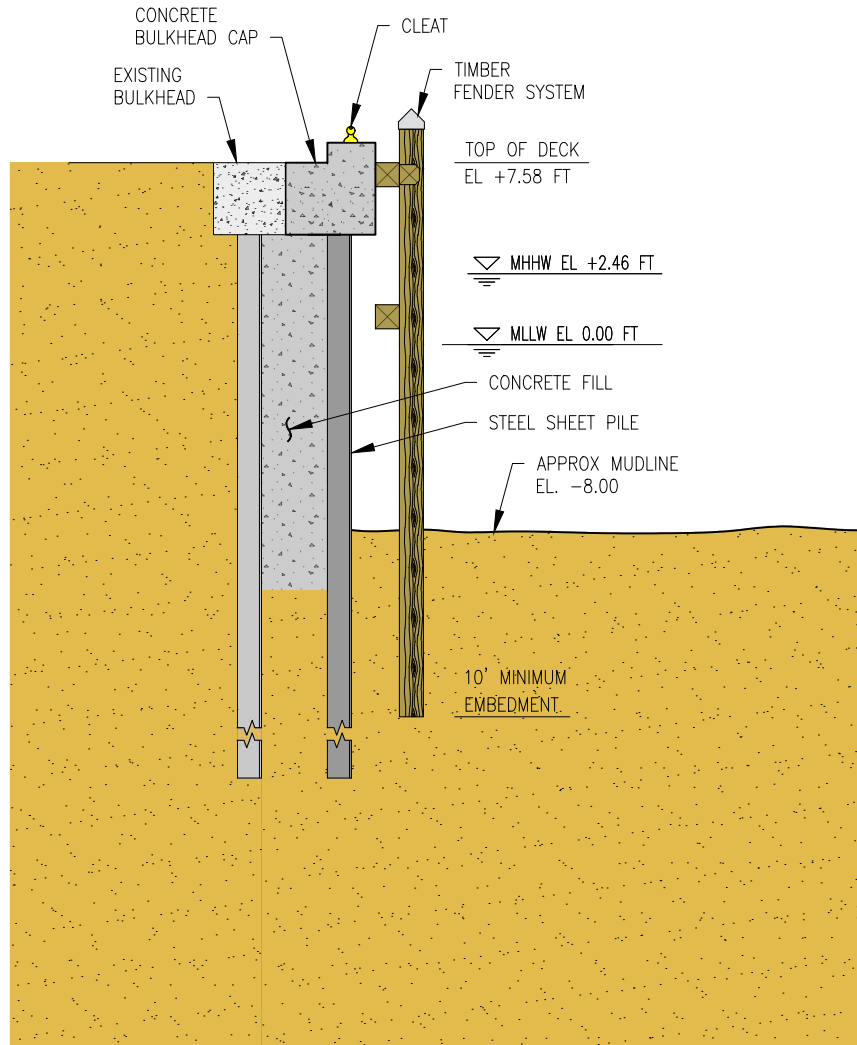
OPERATIONS AND MAINTENANCE FACILITY  
PIER INSTALLATION

LEGEND AND NOTES

NOT TO SCALE

DATE: AUGUST 2023

PLATE 07 of 08



CONCEPTUAL BULKHEAD SECTION C-C



US WIND, INC.  
BALTIMORE, MD

**Revisions**

**OPERATIONS AND MAINTENANCE FACILITY  
PIER INSTALLATION**



NOT TO SCALE

DATE: AUGUST 2023

PLATE 08 of 08