

Note: This drawing was adapted from the U.S. Department of the Interior, Geological Survey Topographic Map for Bridgeville, DE (2023)

FIGURE 1 - SITE LOCATION CANNON STREET PROPERTY

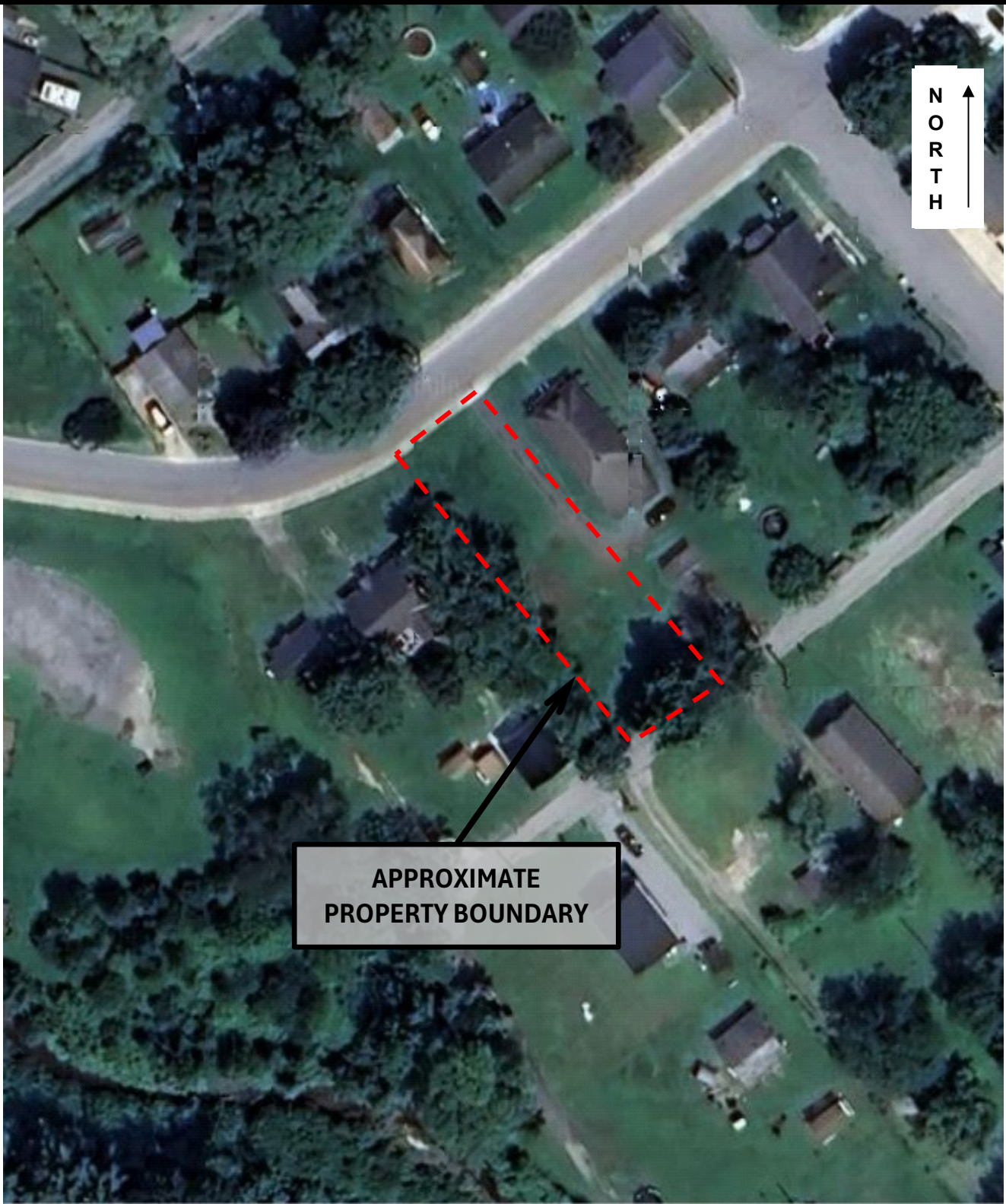
507 NORTH CANNON STREET

BRIDGEVILLE, SUSSEX COUNTY, DELAWARE



Ten Bears Environmental Associates Co.
606 Federal Street
Milton, DE 19968
Phone: (302) 684-5080 Fax: (302) 684-5081

DATE:	7/11/2024	JOB NUMBER:	24-2490.B
DRAWN BY:	JRL	SCALE:	1" = Approx. 1200'
CHECKED BY:	RCG	FIGURE NO:	1
FILE NO:	24-2490.B.FIG	SHEET	1 OF 1



N
O
R
T
H

APPROXIMATE
PROPERTY BOUNDARY

100 ft

--- Approximate Site Boundary

Note: This drawing was adapted from an aerial photograph obtained from Google Earth



Ten Bears Environmental Associates Co.
606 Federal Street
Milton, DE 19968

Phone: (302) 684-5080 Fax: (302) 684-5081

**FIGURE 2 - ARIAL PHOTOGRAPH
CANNON STREET PROPERTY**

507 NORTH CANNON STREET

BRIDGEVILLE, SUSSEX COUNTY, DELAWARE

DATE:	7/11/2024	JOB NUMBER:	24-2490.B
DRAWN BY:	JRL	SCALE:	As Shown
CHECKED BY:	RCG	FIGURE NO:	1
FILE NO:	24-2490.B.FIG	SHEET	1 OF 1