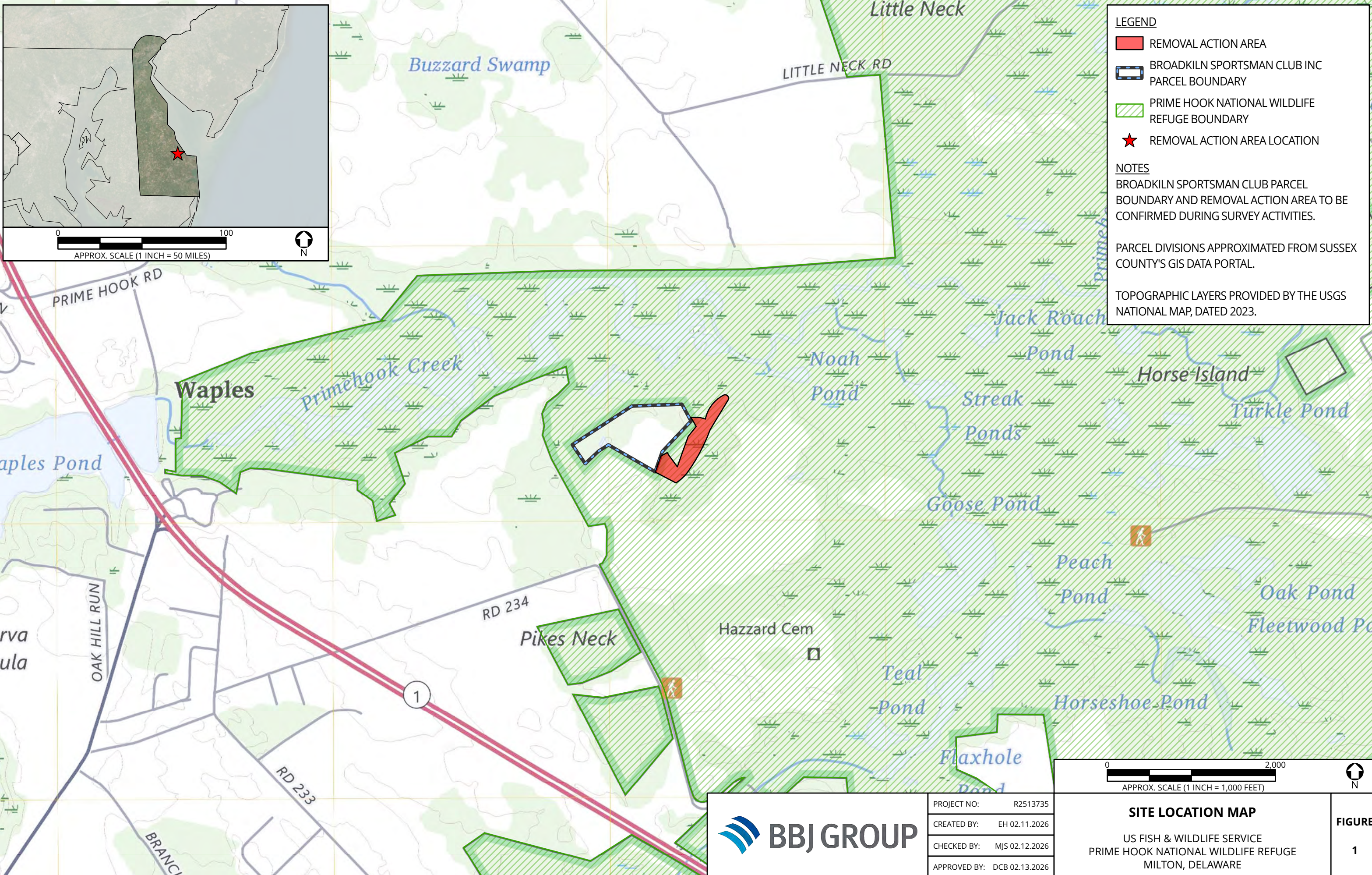


FILE: T:\ZZ\_ARCGIS\_DATA\ACTIVE\MILTON DE\USFWS\SLM\_LAYOUT\FIGURE 1 - MILTON DE\USFWS\SLM\_LAYOUT\FIGURE 1 - MILTON DE (EHEICK, 2/18/2026 12:58 PM)



**LEGEND**

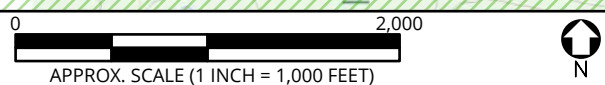
- REMOVAL ACTION AREA
- BROADKILN SPORTSMAN CLUB INC PARCEL BOUNDARY
- PRIME HOOK NATIONAL WILDLIFE REFUGE BOUNDARY
- REMOVAL ACTION AREA LOCATION

**NOTES**

BROADKILN SPORTSMAN CLUB PARCEL BOUNDARY AND REMOVAL ACTION AREA TO BE CONFIRMED DURING SURVEY ACTIVITIES.

PARCEL DIVISIONS APPROXIMATED FROM SUSSEX COUNTY'S GIS DATA PORTAL.

TOPOGRAPHIC LAYERS PROVIDED BY THE USGS NATIONAL MAP, DATED 2023.



	PROJECT NO:	R2513735
	CREATED BY:	EH 02.11.2026
	CHECKED BY:	MJS 02.12.2026
	APPROVED BY:	DCB 02.13.2026

**SITE LOCATION MAP**

US FISH & WILDLIFE SERVICE  
PRIME HOOK NATIONAL WILDLIFE REFUGE  
MILTON, DELAWARE

**FIGURE**  
**1**