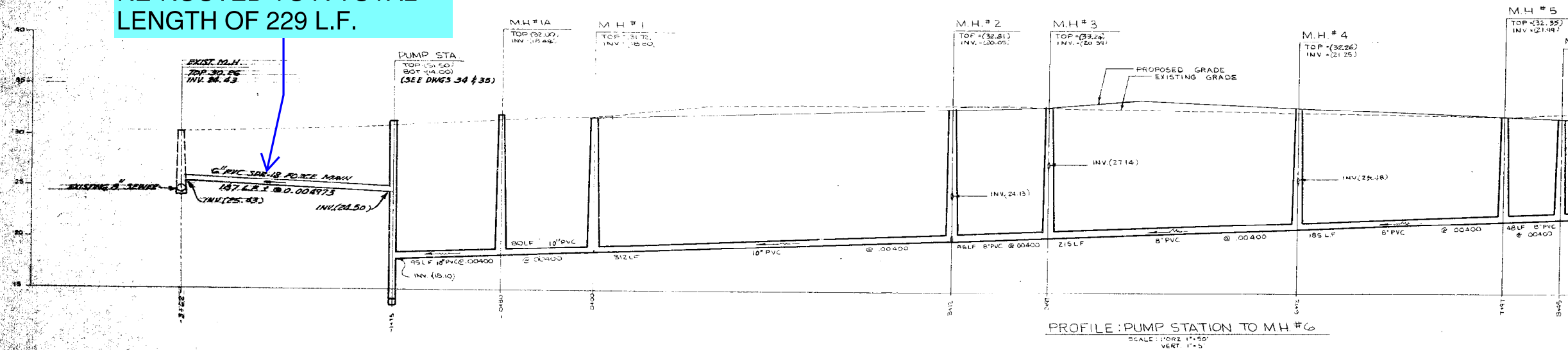
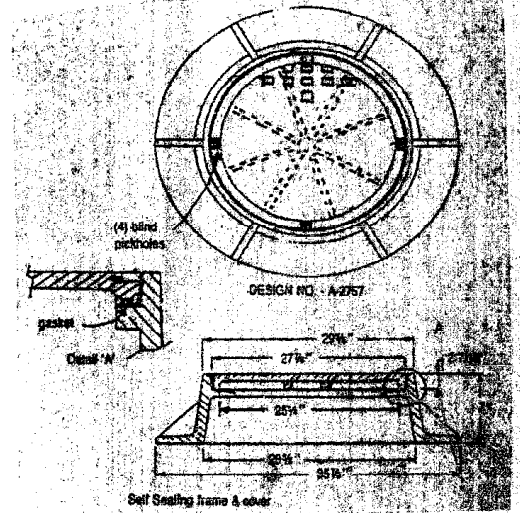


EXISTING 187 L.F.
6" PVC FORCE MAIN TO BE
RE-ROUTED TO A TOTAL
LENGTH OF 229 L.F.



CONSTRUCTION NOTES

- ALL SEWER CONSTRUCTION SHALL BE PERFORMED IN ACCORDANCE WITH SUSSEX COUNTY STANDARD SPECIFICATIONS AND APPLICABLE LOCAL ORDINANCES.
 - ALL MATERIALS AND EQUIPMENT SHALL BE INSTALLED IN ACCORDANCE WITH THE MANUFACTURER'S RECOMMENDATIONS.
 - SANITARY SEWER PIPE TO BE PVC SDR 35 (ASTM D 3034) WITH FACTORY ASSEMBLED RUBBER RING GASKET JOINTS (ASTM D 1869), AS MANUFACTURED BY JOHNS-MANVILLE OR APPROVED EQUAL, INSTALLED ACCORDING TO ASTM D 2321.
 - MANHOLES TO BE PRECAST CONCRETE (ASTM C 478) WITH "D" RINGS/RUBBER GASKET JOINTS (ASTM C 443) AND STANDARD HEAVY DUTY FRAMES AND COVERS (ASTM C 478 CLASS 30).
 - ALL MANHOLES SHALL BE FITTED WITH WATER-TIGHT INSERT AS MANUFACTURED BY METHODS ENGINEERING MODEL NO. REC-A OR APPROVED EQUAL.
 - ALL HOUSE LATERAL CONNECTIONS SHALL BE TERMINATED WITH A CLEAN-OUT PLUGGED FOR FUTURE CONNECTION, ONE FOOT INSIDE R/W.
 - CONNECTION OF DWELLING UNIT TO THE END OF THE LATERAL MUST BE DONE BY TOWN OF MILTON LICENSED PLUMBER, WHO MUST OBTAIN THE NECESSARY PERMIT APPLICATION AND THE CONNECTION MUST BE INSPECTED BY TOWN OF MILTON ENGINEERING DEPARTMENT. NO CONNECTIONS CAN BE MADE TO THE LATERAL UNTIL "CONDITIONAL ACCEPTANCE" OF THE SYSTEM HAS BEEN GIVEN BY TOWN OF MILTON, WHO WILL DESIGNATE THE LOCATIONS OF SEWER HOUSE SERVICE CONNECTIONS.
 - PIPE TRENCH MUST BE EXCAVATED TO THE FINISHED GRADE AND MUST BE DRY DURING PIPE PLACEMENT AND BACKFILLING. BACKFILL SHALL BE THE MATERIAL EXCAVATED PROVIDED IT IS FREE OF ORGANIC MATTER, HEAVY CLAY, DEBRIS, ETC. THE BACKFILL IS TO BE HAND TAMPED TO AT LEAST 12" ABOVE TOP OF THE PIPE AND MAY BE MECHANICALLY TAMPED IN 6" LIFTS TO FINISHED GRADE. EACH LIFT SHALL BE COMPACTED TO 95% MODIFIED PROCTOR DENSITY.
 - PIPELINE DETECTABLE TAPE SHALL BE INSTALLED CONTINUOUSLY ALONG THE FORCE MAIN LINE, DIRECTLY ABOVE IT AND 18" BELOW GRADE. THE TAPE SHALL BE A MINIMUM 2" WIDE, GREEN IN COLOR, IMPRINTED WITH THE WORDS "LOCATION SEWER LINE BELOW" AND BE CAPABLE OF BEING DETECTED WITH INDUCTIVE METHODS. LINEGUARD TYPE II DETECTABLE TAPE MFG. BY LINEGUARD INC. OF WHEATON, ILL. OR APPROVED EQUAL.
 - BEFORE ANY EXCAVATION IS PERFORMED, CONTRACTOR SHALL NOTIFY THE TOWN OF MILTON "UTILITY" DEPARTMENT AND ANY OTHER UTILITY COMPANY WHICH IS NOT A MEMBER OF MFC-UTILITY 24 HOURS PRIOR TO EXCAVATION TO HAVE UNDERGROUND UTILITY CABLES LOCATED AND MARKED.
 - ALL GRAVITY SEWERS & LATERALS SHALL BE AIR OR WATER TESTED BY THE CONTRACTOR AND INSPECTED AND ACCEPTED BY THE TOWN OF MILTON.
- * SELF-SEALING, SEAL TIGHT MANHOLE FRAMES & COVERS, AS MFG'D BY B & C UTILITY SUPPLY INC. (301) 833-6100, P.O. BOX 248 FINKSBURG, MD. 21048 (SEE BELOW)



VOL 41 PAGE 139

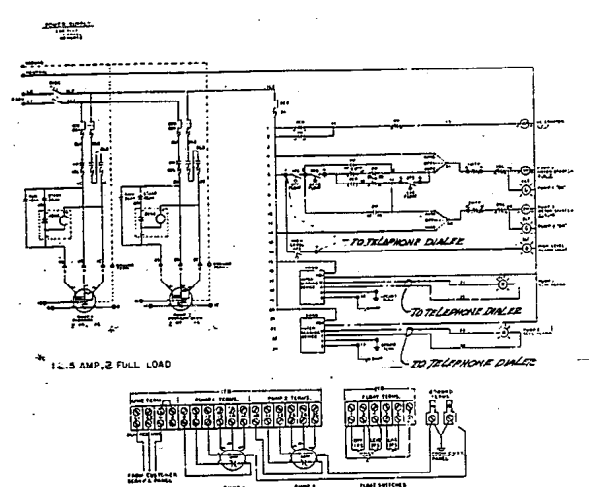
SANITARY SEWER PLAN & PROFILES
FOR
SHIPBUILDERS VILLAGE
SITUATE IN
THE TOWN OF MILTON
BROADKILL HUNDRED SUSSEX COUNTY DELAWARE
SCALE: 1"=50' DATE: NOVEMBER 2, 1988
REV: JAN. 5, 1989

RAMESH C. BATTI ASSOCIATES, P.A.
Consulting Engineers Planners Land Surveyors

4600 New Linden Hill Road
Brownstone Plaza, Suite 103
Wilmington, Delaware, 19808
Phone (302) 998-9463

Professional Building
510 A N. DuPont Highway
Georgetown, Delaware, 19347
Phone (302) 856-2581

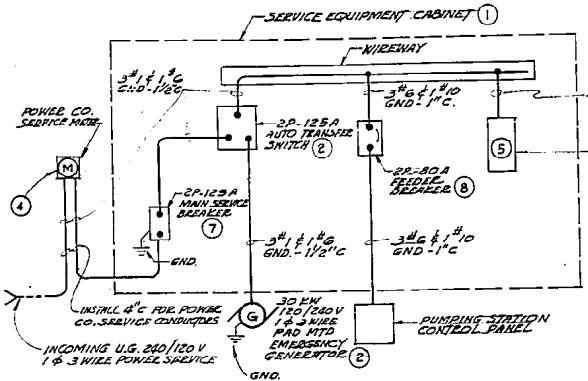
82246G-C-5366-21



PUMP CONTROL PANEL
WIRING DIAGRAM

GENERATOR SPECIFICATIONS

- A. ENGINE GENERATOR SFT:
1. General:
 - a. Furnish all labor, materials, equipment testing and services for an incident to furnishing and installing a complete weatherproof and verminproof enclosed diesel engine generator set as specified herein. The engine generator set shall be factory assembled and tested. Local assembly shall be complete with an engine generator set will not be acceptable.
 - b. All generator construction and tests shall be in strict accordance with IEEE, IEEE and IEEE Standards.
 - c. The engine generator manufacturer shall furnish all generator, starting and control parts and assume responsibility for correct operation of the engine system.
 - d. The generator set shall be mounted in perfect alignment on all-weather structural steel and type aluminum and securely anchored to the concrete pad.
 - e. Factory certified load test data shall be submitted to indicate unit capacity as specified, while delivering full load continuously for 72 hours.
 - f. After the installation is complete, the manufacturer of the engine generator set shall provide services of a capable service engineer to conduct a 100% load test and instruct the operating personnel. All fuel, lubrication oil, and electrical and electrical instruments required for the tests shall be furnished by the contractor.
2. Engine:
 - a. The generator shall be driven by a single engine at engine speed not greater than 1800 rpm. Engine shall be materially maintained on labor charges. It shall operate satisfactorily on a commercial grade of number 2 fuel oil and shall not require previous fuel such as kerosene. The diesel engine shall be of the vertical multi-cylinder, four cycle, water cooled, injection, full diesel type, with cooling water pumped. The lubrication system shall be of the full pressure type.
 - b. The engine shall be furnished with the following accessories:
 - (1) Two variable full-flow oil filters, and oil drain valve with hose extension. Provide one spare of each.
 - (2) Replaceable dry element air cleaner. Provide one spare element.
 - (3) Replaceable fuel filter. Provide one spare of each.
 - (4) Mechanical governor to control engine speed.
 - (5) Electric starting system, including starting motor, battery, cables and battery rack.
 - (6) Safety devices to protect the engine against high water, low water, high temperature, low lubricating oil pressure, overloading and overcranking.
 - (7) Jacket water heater, thermostatically controlled, to maintain engine jacket at 90 degrees F. water. It shall be suitable for 200 psi water pressure operation, on a 20 ampere circuit. Master shall have master switch in cover of control panel.
 - (8) Anti-freeze solution for 150 degrees ambient for cooling system.
 - (9) Heat exchanger with engine drive fan on fan. Separate electric motor driven fan will not be accepted.
 - (10) A glow plug/ignition panel, with interlocking oil pressure gauge and water temperature gauge.
3. Generator:
 - a. The generator shall operate at a speed not greater than 1800 rpm and shall be coupled to engine with a flexible coupling which will provide control of the generator speed. The generator speed shall be maintained within a minimum of plus or minus 3 percent of rated speed. The generator shall be capable of operating at 100 percent of rated load for 72 hours. The generator shall be capable of operating at 100 percent of rated load for 72 hours. The generator shall be capable of operating at 100 percent of rated load for 72 hours.

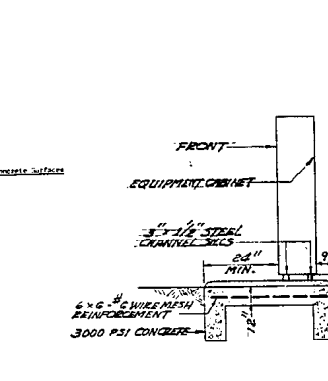


SINGLE LINE DIAGRAM - SEWAGE PUMPING STATION
NO SCALE

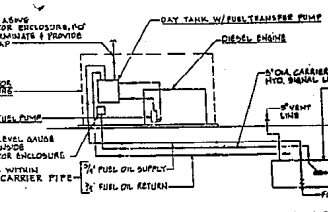
DESCRIPTION	LOAD WATTS	CKT NO.	WIRE SIZE	WIRE NO.	NEUTRAL	CKT NO.	WIRE SIZE	WIRE NO.	DESCRIPTION
EQUIP. CABINET RECEPT.	1000	20/1	#12	1	00	2	#10	20/1	POLE LIGHT
EQUIP. CABINET STOP MTR.	500	20/1	#12	3	00	4	#10	20/1	SPACE
EXHAUST FAN, 1/2 HP	100			4	00	6			
TELEPHONE DIALER				7	00	8			
SPARE				9	00	10			
SPARE				11	00	12			

PAINTING

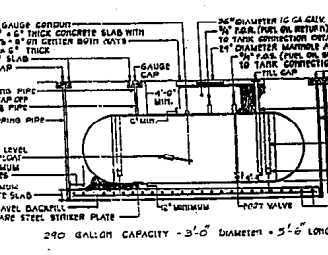
1. Coat exterior surfaces with primer.
2. Coat exterior surfaces with primer.
3. Coat exterior surfaces with primer.
4. Coat exterior surfaces with primer.
5. Coat exterior surfaces with primer.
6. Coat exterior surfaces with primer.
7. Coat exterior surfaces with primer.
8. Coat exterior surfaces with primer.
9. Coat exterior surfaces with primer.
10. Coat exterior surfaces with primer.
11. Coat exterior surfaces with primer.
12. Coat exterior surfaces with primer.



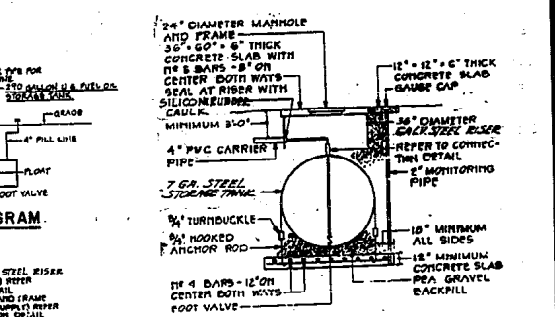
DETAIL - PUMP STATION SERVICE
EQUIPMENT CABINET
NOT TO SCALE



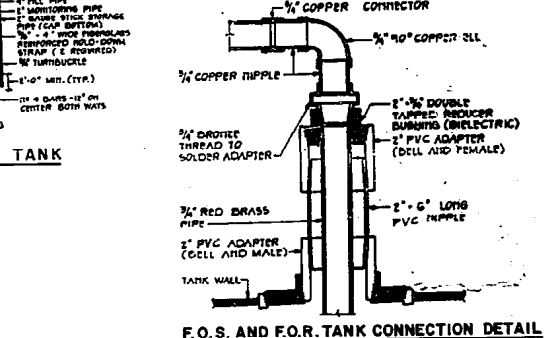
GENERATOR FUEL OIL PIPING DIAGRAM
NO SCALE



ELEVATION - FUEL OIL STORAGE TANK
NO SCALE



SECTION - FUEL OIL STORAGE TANK
NO SCALE



F.O.S. AND F.O.R. TANK CONNECTION DETAIL
NO SCALE

PUMPING STATION FOR
SHIPBUILDERS VILLAGE

SITUATE IN
THE TOWN OF MILTON

BROADKILL HUNDRED, SUSSEX COUNTY, DELAWARE

SCALE: AS NOTED DATE: DEC. 5, 1988

Graphic Scale

Received For Record
January 1989
473 am.

RAMESH C. BATTI ASSOCIATES, P.A.

Consulting Engineers Planners Land Surveyors

4600 New Linden Hill Road
Brownstone Plaza, Suite 103
Wilmington, Delaware 19808
Phone (302) 998-9463

Professional Building
510 A N. DuPont Highway
Georgetown, Delaware 19947
Phone (302) 856-2591

82246 - C - 5366 - 35