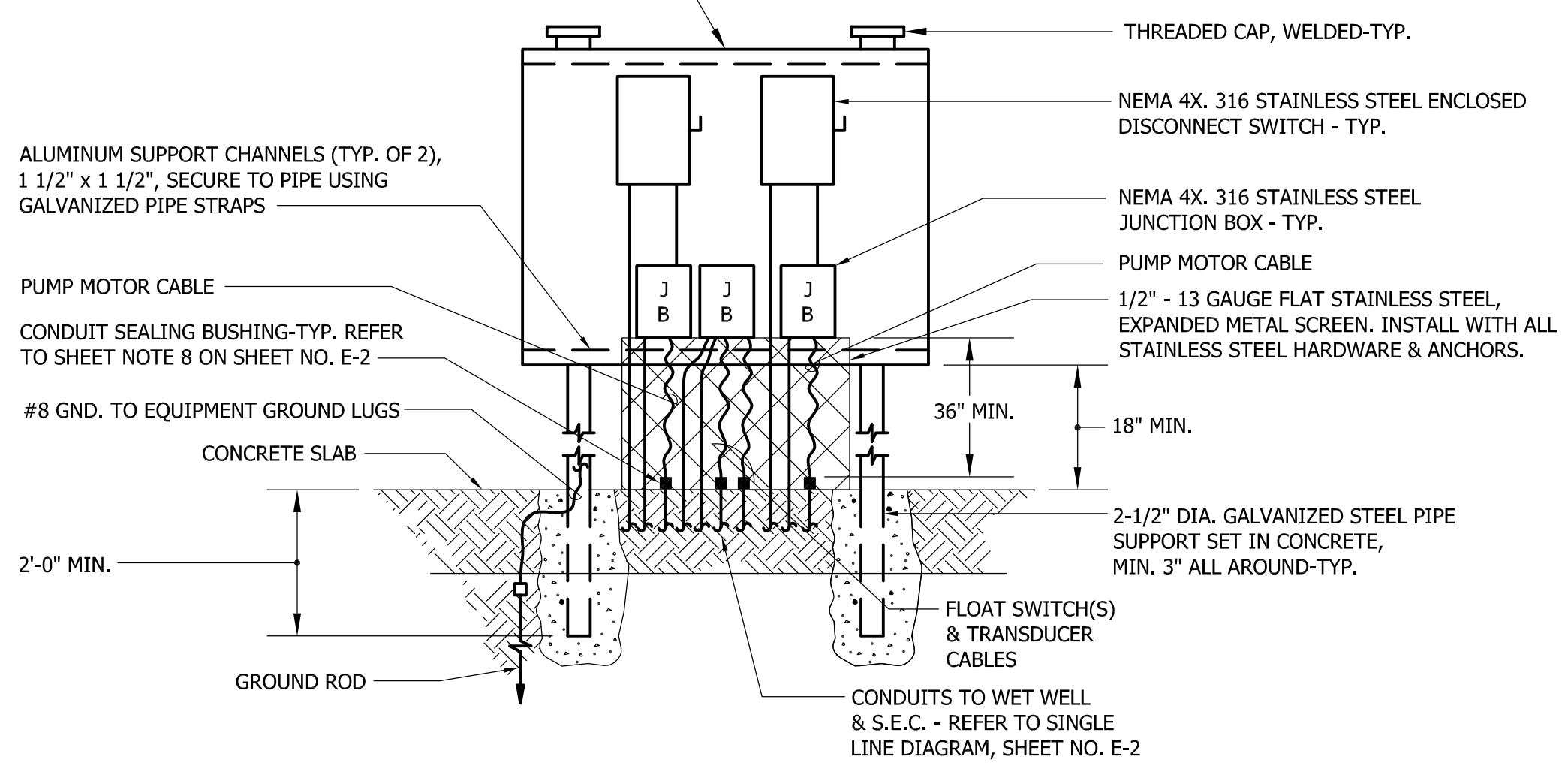


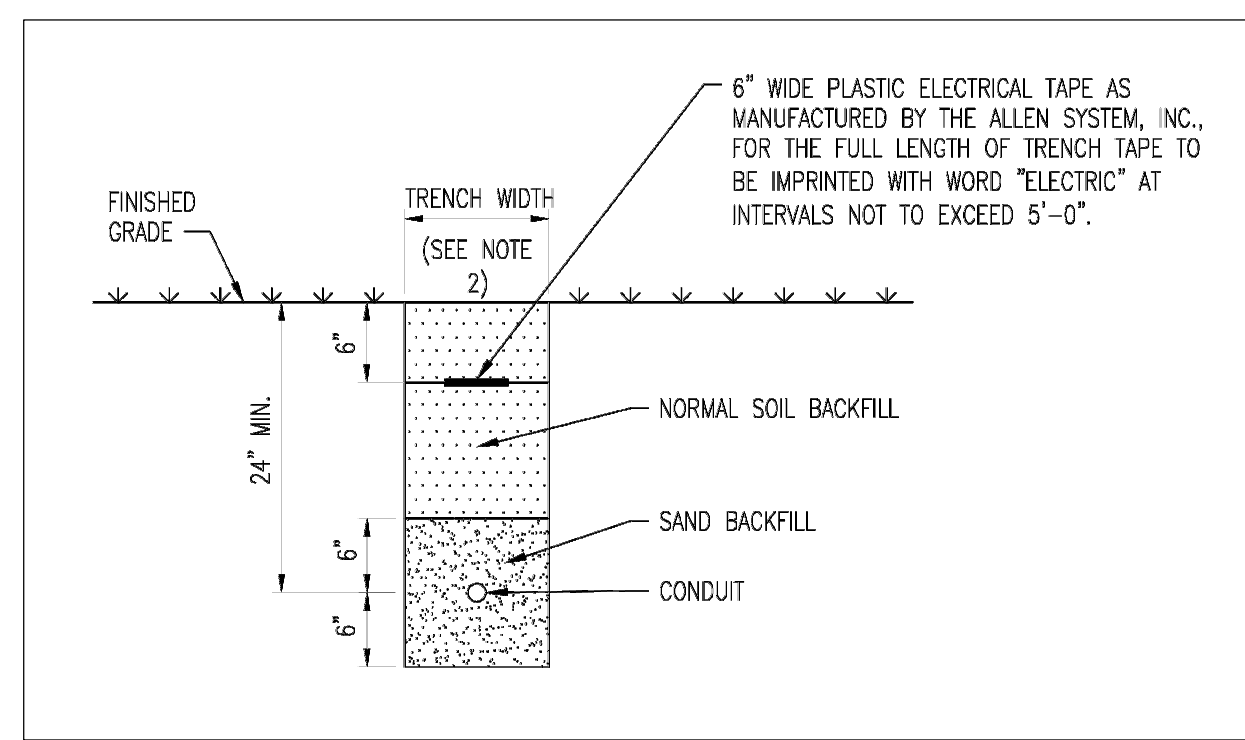
**SITE PLAN**  
SCALE: 1" = 10'-0"

1/8" THICK ALUMINUM BACKPLATE (4" MIN. WIDTH x 3" MIN. HEIGHT, EXACT SIZE TO SUIT EQUIPMENT), SECURELY BOLT TO HORIZONTAL SUPPORT CHANNELS.



**DETAIL - EQUIPMENT MOUNTING PEDESTAL**  
NO SCALE

**NOTE:**  
BACK TO FACE TOWARDS WET WELL,  
FRONT TOWARDS THE S.E.C.



**NOTES**

- TRENCH DETAIL IS APPLICABLE TO PUMP STATION SITES ONLY.
- TRENCH WIDTH SHALL BE OUTSIDE DIAMETER OF CONDUIT PLUS 6 INCHES ON EITHER SIDE.
- FOR MULTIPLE CONDUIT CONFIGURATIONS, PROVIDE 3" SEPARATION BETWEEN CONDUITS.

**UNDER GROUND CONDUIT INSTALLATION**  
SCED DETAIL E-5 (12/2021)

**SHEET NOTES:**

- GROUND GRID CONSISTING OF EIGHT (8) DRIVEN GROUND RODS (3/4"DIA.X10'-0" LONG, ONE PIECE COPPER CLAD STEEL) INTERCONNECTED WITH #4/0 BARE COPPER CONDUCTOR. ALL UG. CONNECTIONS SHALL BE EXOTHERMIC WELDED.
- DIRECTION OF ENGINE EXHAUST & RADIATOR DISCHARGE.
- SERVICE METER - MOUNT ON EXTERIOR OF SERVICE EQUIPMENT CABINET UTILIZING VERTICAL ALUMINUM CHANNEL SUPPORTS (MINIMUM 1-1/2" SQUARE x 12 GAUGE) SECURED WITH STAINLESS STEEL THRU-BOLT ASSEMBLIES.
- PUMP MOTOR & LEVEL SENSING CONDUITS TO SERVICE EQUIPMENT CABINET VIA EQUIPMENT MOUNTING PEDESTAL. SEE SINGLE LINE DIAGRAM, SHEET NO. E-2.
- POLE HINGE DIRECTION.
- WET WELL VENTILATION FAN - SEE SINGLE LINE CONTROL DIAGRAM, SHEET NO. E-2; SEE INSTALLATION DETAIL, SHEET NO. E-12.
- SCADA ANTENNA POLE - SEE DETAIL, SHEET NO. E-12.
- GENERATOR SUPPLY, CONTROL, ALARM & AUXILIARY POWER CIRCUITS TO SERVICE EQUIPMENT CABINET - SEE SINGLE LINE DIAGRAM, SHEET NO. E-2.
- FREE STANDING, PAD MOUNTED SERVICE EQUIPMENT CABINET "SEC". SEE DETAIL/ELEVATION, SHEET NO. E-2.
- 4" C. (SCHEDULE 80 PVC) TURNOUT FOR INCOMING 240/120V., 1 $\phi$ , 3 WIRE DELMARVA POWER SERVICE CONDUCTORS.
- 1 1/4" C. W/ANTENNA CABLE TO PCP.
- VENTILATION EXHAUST PIPE - SEE DETAIL, SHEET NO. E-12.
- PAD MOUNTED & ENCLOSE DIESEL ENGINE DRIVEN GENERATOR SET - SEE SINGLE LINE DIAGRAM, SHEET NO. E-2.
- SEE CONCRETE PAD DETAIL, SHEET NO. E-12.
- EQUIPMENT MOUNTING PEDESTAL - REFER TO DETAIL, THIS SHEET & SINGLE LINE DIAGRAM, SHEET NO. E-2.

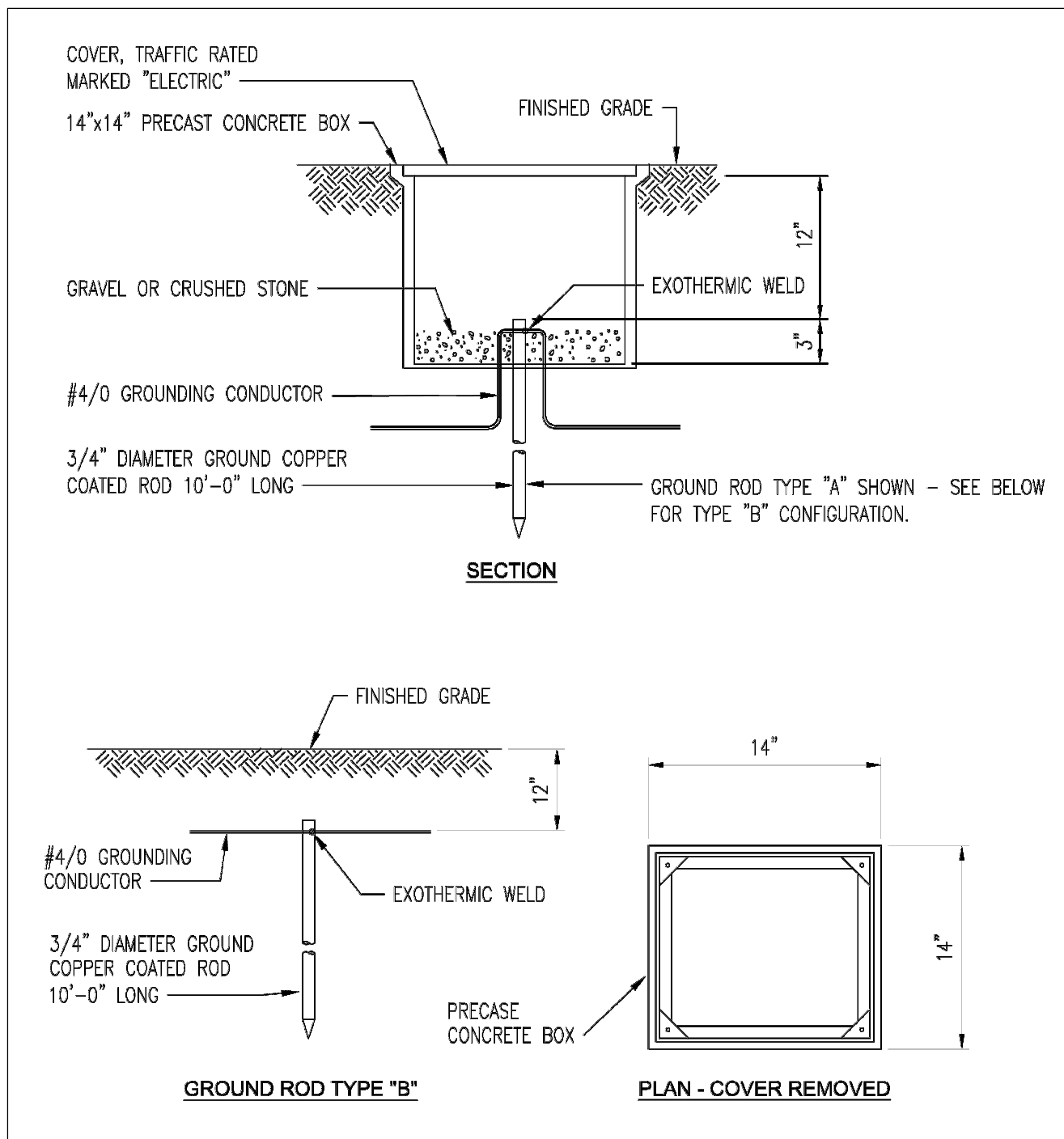
**ELECTRICAL LEGEND**

**ABBREVIATIONS:**

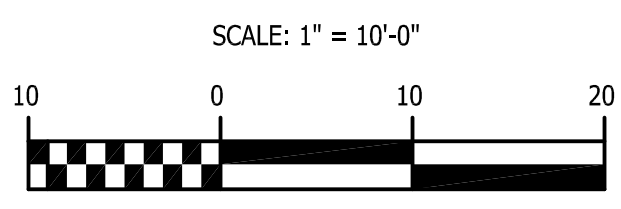
- A. AMP OR AMPERES
- A.F.F. ABOVE FINISHED FLOOR
- BRKR. BREAKER
- C. CONDUIT
- CTD. COATED
- CFM. CUBIC FEET/MINUTE
- DEC. DELAWARE ELECTRICAL COOPERATIVE
- DIA. DIAMETER
- ELEV. ELEVATION
- GAI. GIPE ASSOCIATES, INC.
- G.F.I. GROUND FAULT INTERRUPTER
- GND. GROUND
- GRS. GALVANIZED RIGID STEEL
- H.O.A. HAND OFF AUTOMATIC
- HP. HORSEPOWER
- H.P.S. HIGH PRESSURE SODIUM
- HZ. HERTZ
- J.B. JUNCTION BOX
- K.V.A. KILOVOLT AMPERES
- KW. KILOWATTS
- LED. LIGHT EMITTING DIODE
- M.H. MOUNTING HEIGHT - TO CENTER OF DEVICE OR EQUIPMENT UNLESS OTHERWISE INDICATED.
- OIT. OPERATORS INTERFACE TERMINAL
- P. POLE OR POLES
- PCP. PUMP CONTROL PANEL
- PLC. PROGRAMMABLE LOGIC CONTROLLER
- PVC. POLYVINYL CHLORIDE
- Ø. PHASE
- RPM. REVOLUTIONS PER MINUTE
- SCADA. SUPERVISORY CONTROL AND DATA ACQUISITION
- SCED. SUSSEX COUNTY ENGINEERING DEPARTMENT
- SCH. SCHEDULE
- S.P. STATIC PRESSURE
- TYP. TYPICAL
- UG. UNDERGROUND
- UPS. UNINTERRUPTIBLE POWER SUPPLY
- V. VOLT OR VOLTS
- WP. WEATHERPROOF
- WW. WET WELL

**SYMBOLS:**

- POLE MOUNTED LED LUMINAIRE - SEE DETAIL, SHEET NO. E-7.
- GROUND ROD - LETTER (A OR B) DENOTES TYPE - REFER TO DETAIL, THIS SHEET.
- SWITCH - SINGLE POLE, M.H. 4'-0".
- RECEPTACLE - 20A., 125V. - SIMPLEX, DUPLEX, DUPLEX G.F.I.
- JUNCTION BOX
- MOTOR - NUMBER DENOTES HORSEPOWER.
- CONDUIT-EXPOSED } 2 #12 & 1 #12 GND.- 3/4" C. UNLESS OTHERWISE NOTED.
- CONDUIT-IN OR UNDER FLOOR SLAB OR UNDERGROUND. }
- HOMERUN TO PANEL - NO. OF ARROWS INDICATES NO. OF CIRCUITS AND NO. OF CROSSLINES INDICATES NO. OF #12 CONDUCTORS.
- DENOTES REFERENCE TO DRAWING NOTE.
- NEMA 1 ENCLOSED CIRCUIT BREAKER
- SPECIAL EQUIPMENT OR DEVICE AS NOTED
- THERMOSTAT
- THERMAL MANUAL MOTOR STARTER
- AUTOMATIC TRANSFER SWITCH - NEMA 1 ENCLOSED
- PUMP CONTROL PANEL
- TRANSIENT VOLTAGE SURGE SUPPRESSOR
- SERVICE METER
- VARIABLE FREQUENCY DRIVE CONTROLLER
- 5% LINE REACTOR
- SAFETY DISCONNECT SWITCH



**GROUND ROD TYPES -**  
SCED DETAIL E-4 (12/2021)



**Gipe Associates, Inc.**  
CONSULTING ENGINEERS  
12208 East Joppa Road, Suite 102  
Towson, Maryland 21286  
410.822.2420  
410.822.8688  
W.O.# 24039

"THIS DRAWING AND THE DESIGN AND CONSTRUCTION FEATURES DISCLOSED ARE PROPRIETARY TO GIPE ASSOCIATES, INC. AND SHALL NOT BE ALTERED OR REUSED IN WHOLE OR IN PART WITHOUT THE EXPRESS WRITTEN PERMISSION OF GIPE ASSOCIATES, INC. Copyright © 2024"

**solutions**  
Integrated Planning  
Engineering & Management, LLC  
303 North Beards Street  
Georgetown, DE 19847  
T. 302.297.9215  
3003 Merritt Mill Road  
Salisbury, MD 21804  
T. 410.572.8853  
www.solutionsipem.com Copyright © 2022



Date: 8/6/2024

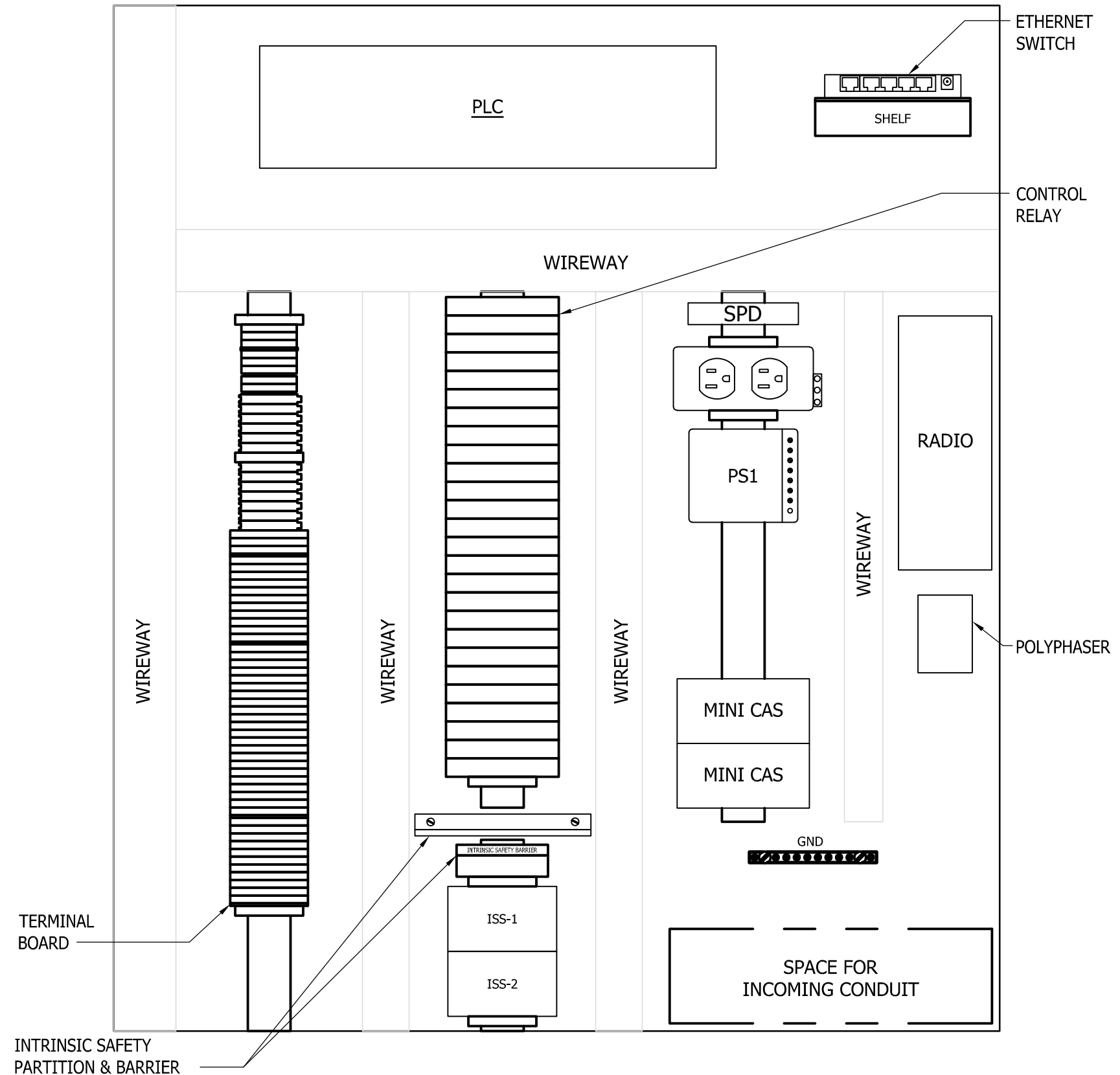
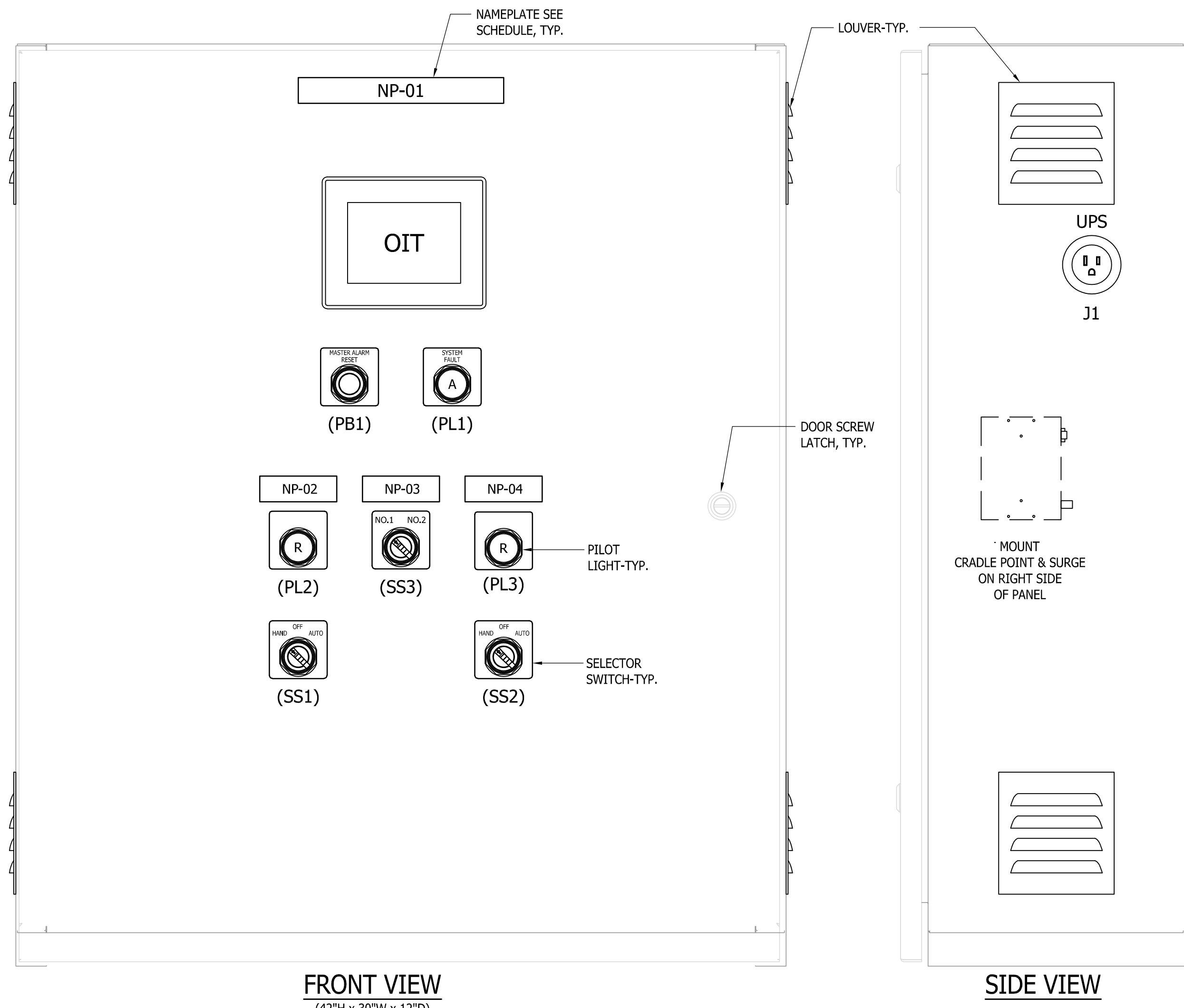
NO.	DATE	DESCRIPTION

PUMP STATION SITE PLAN, LEGEND & DETAILS  
**LEEWARD CHASE**  
for  
SUSSEX COUNTY, DELAWARE  
Prepared for: Wakefield Development, LLC

Date: 8/24  
Job Number: G21074  
Scale: AS SHOWN  
Drawn By: JLP  
Designed By: DKJ  
Approved By: DKJ

Sheet No.:  
**E-1**  
File Name:  
G19076-PUMPSTATION





SUB-PANEL LAYOUT

NAMEPLATE SCHEDULE				
REF.	NAME PLATE SIZE	TEXT HEIGHT	LINE	TEXT
NP-01	8" X 1"	1/2"	L1	PUMP CONTROL PANEL
NP-02	4" X 1"	3/8"	L1	PUMP NO.1
NP-03	4" X 1"	3/8"	L1	FLOAT SYSTEM
NP-04	4" X 1"	3/8"	L1	PUMP NO.2

NOTES:  
 1. NAMEPLATES: WHITE LAMICOID (2-PLY) WITH BLACK ENGRAVED LETTERS.  
 2. ATTACH WITH S.S. DRIVE SCREWS (COAT REAR OF SCREW WITH SILICON SEAL).

- NOTES:
- CONSTRUCTION: NEMA 12.  
 A. ENCLOSURE BODY/DOOR: 14 GAUGE STEEL.  
 B. SUB PANEL: 12 GAUGE CARBON STEEL.
  - FINISH:  
 A. ENCLOSURE: ALL SURFACES ANSI 61 GRAY ENAMEL OVER PHOSPHATIZED SURFACES.  
 B. SUB PANEL: WHITE ENAMEL.
  - PLASTIC WIRE WRAPS SHALL BE USED TO BUNDLE WIRES EXCEPT WITHIN WIRING DUCTS. BUNDLES WILL BE SECURELY FASTENED TO STEEL STRUCTURE.
  - WIRE TO BE STRANDED COPPER, INSULATED FOR NOT LESS THAN 600 VOLTS WITH A MOISTURE- RESISTANT & FLAME RETARDANT COVERING.
  - CONTROL CIRCUIT WIRING TO BE 16 AWG MINIMUM. ANALOG CIRCUIT WIRING TO BE 18 AWG TWISTED SHIELDED PAIRS.
  - BOTH ENDS OF ALL WIRES SHALL BE MARKED.
  - WIRE COLORS:  
 BLACK  
 WHITE  
 AC PHASE  
 GREEN  
 AC NEUTRAL  
 RED  
 AC CONTROL (PANEL POWERED)  
 YELLOW  
 AC CONTROL (FIELD POWERED)  
 ORANGE  
 DC CONTROL  
 BLUE  
 (+)24VDC  
 BROWN  
 (-)24VDC  
 2/C SHIELD  
 (+) RED  
 (-) BLACK
  - REFER TO SHEETS NO., E-4,E-5 & E-6 FOR CONTROL & PLC CONNECTION DIAGRAMS.
  - MOTOR PROTECTION RELAYS (MINI CAS) WILL BE FURNISHED BY THE PUMP MANUFACTURER & TURNED OVER TO THE PUMP CONTROL MANUFACTURER FOR INSTALLATION.

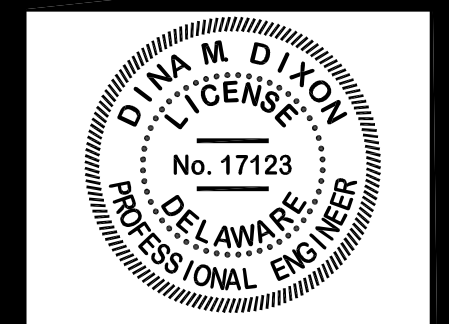
PROFESSIONAL CERTIFICATION:  
 I HEREBY CERTIFY THAT THESE DOCUMENTS WERE PREPARED OR APPROVED BY ME, AND THAT I AM A DULY LICENSED PROFESSIONAL ENGINEER UNDER THE LAWS OF THE STATE OF DELAWARE, LICENSE No. 17123, EXPIRATION DATE: 06/30/2026.

**solutions**  
 Integrated Planning  
 Engineering & Management, LLC

303 North Beardsley Street  
 Georgetown, DE 19947  
 T. 302.297.9215

3003 Mount Mill Road  
 Salisbury, MD 21804  
 T. 410.372.8833

www.solutionsipem.com Copyright © 2022

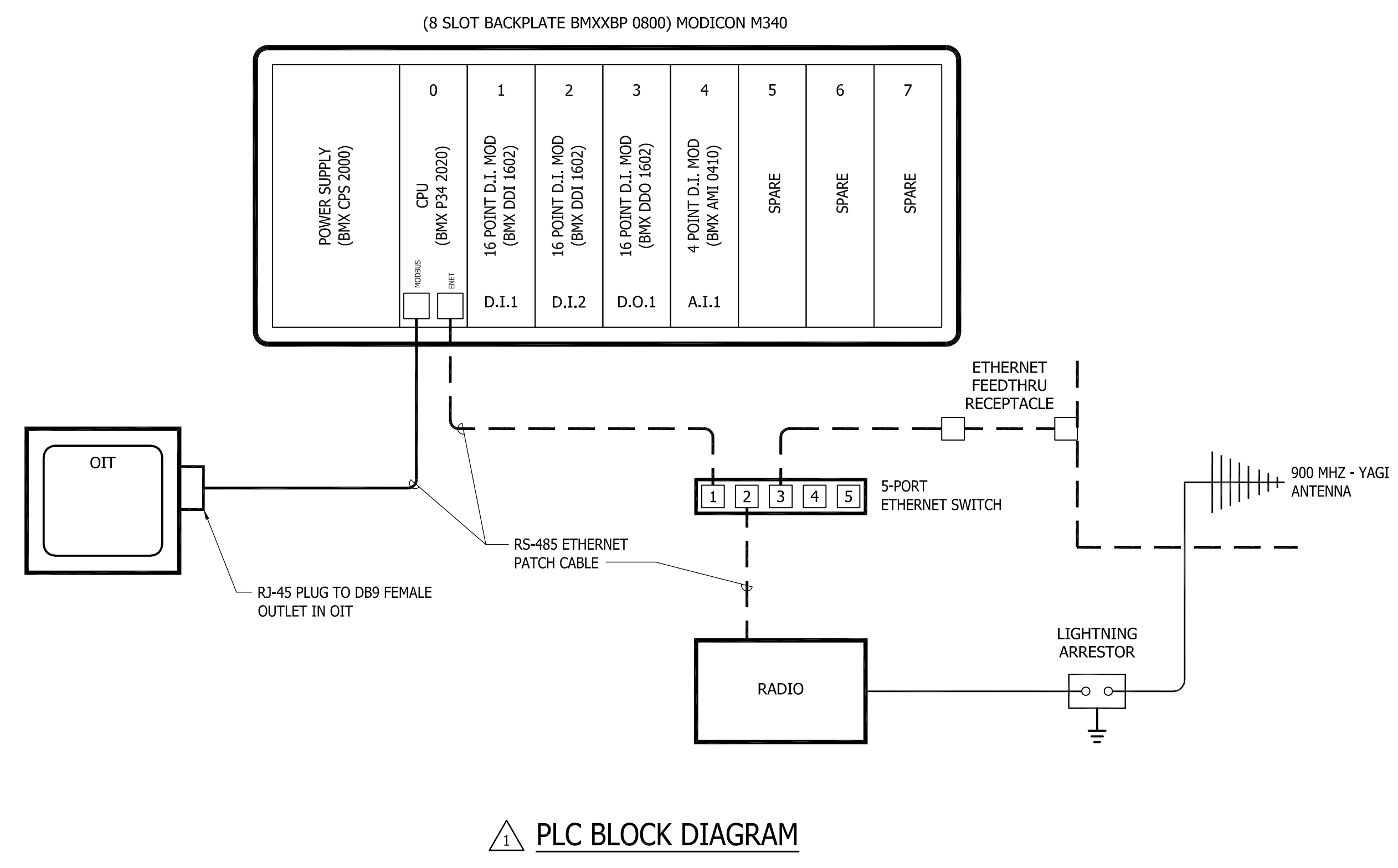


Date: 8/6/2024

REVISIONS		DATE	DESCRIPTION
NO.	DATE	DESCRIPTION	
1	8/30/24	GAH REVISION	

DETAIL - PUMP CONTROL PANEL (PCP)  
 NOT TO SCALE

PUMP CONTROL PANEL EQUIPMENT LIST					
PART DESIGN.	QTY.	MANUFACTURER	DESCRIPTION	MANUFACTURER	MODEL NO.
PCP	1	ENCLOSURE	w/MOUNTING PANEL, 42"H x 30"W x 12"D	SCHAEFERS	SPLN1-423012
PCP	1	SUB PANEL	38"H x 28.5"W	SCHAEFERS	SPLN1P-4230
PCP	4	LOUVER PLATE KIT		SCHAEFERS	SP-VK34
SPD	1	SURGE PROTECTION DEVICE		PHOENIX CONTACT	2856812
UPS	1	UNINTERRUPTIBLE POWER SUPPLY	500VA	APC	BE550G
CR...	26	DPDT RELAY	24VDC COIL, 2 FORM "C" CONTACTS	WEIDMULLER	8530631001
CRP	1	DPDT RELAY	120VAC COIL, 2 FORM "C" CONTACTS	WEIDMULLER	8530661001
OIT	1	COLOR TOUCHSCREEN OIT	5.7", 24VDC	TELEMECANIQUE	XB7GT2220
PLC	1	M340 8 SLOT RACK		MODICON	BMX XBP 0800
PLC	1	M340 POWER SUPPLY	120 VAC, 20W	MODICON	BMX CPS 2000
PLC	1	M340 PROCESSOR w/MODBUS PORT AND ETHERNET PORT		MODICON	BMX P34 2020
PLC	2	M340 16PT. 24VDC D.I. MODULE		MODICON	BMX DDI 1602
PLC	1	M340 16PT. 24VDC D.O. MODULE		MODICON	BMX DDO 1602
PLC	1	M340 4PT. A.I. MODULE		MODICON	BMX AMI 0410
-	4	20 PIN REMOVABLE TERMINAL BLOCK		MODICON	BMX FTB 2010
PS1	1	24VDC POWER SUPPLY		WOERTZ	45700K/24S
-	6	120VAC FUSE TERMINAL w/BLOWN FUSE INDICATOR		PHOENIX CONTACT	3046100
-	8	24VDC FUSE TERMINAL w/BLOWN FUSE INDICATOR		PHOENIX CONTACT	3046090
F1-3,6,11	5	FUSE, 2A		WOERTZ	WF520F/2
F4,5,12-18	9	FUSE, 1A		WOERTZ	WF520F/1
-	10	SINGLE LEVEL TERMINAL		PHOENIX CONTACT	3044102
-	3	SINGLE LEVEL END BARRIER		PHOENIX CONTACT	3047028
-	48	DOUBLE LEVEL TERMINAL		PHOENIX CONTACT	3044814
-	4	DOUBLE LEVEL END BARRIER		PHOENIX CONTACT	3047293
-	10	END STOP, CLEAR		PHOENIX CONTACT	800886
J2	1	DIN RAIL MOUNTED RECEPTACLE		WOERTZ	WRO-15SDRGY
CB	1	20A CIRCUIT BREAKER		WOERTZ	WCB-1P-2-20
SS4	1	2-POSITION SELECTOR SWITCH, 2 N.O./2 N.C. CONTACTS		SQUARE D	9001KS11BH2
SS1,SS2,SS3,SS5	3	3-POSITION SELECTOR SWITCH, 2 N.O./2 N.C. CONTACTS		SQUARE D	9001KS43BH2
USE w/SS1,SS2,SS3	3	1 N.O./1 N.C. CONTACT BLOCK		SQUARE D	9001KA1
PL1	1	PILOT LIGHT, AMBER		SQUARE D	9001KP1A31
PL2, PL3	2	PILOT LIGHT, RED		SQUARE D	9001KP1R31
USE w/PL2, PL3	2	PILOT LIGHT, NAMEPLATE ENGRAVED "RUN"		SQUARE D	9001KN124WP
USE w/SS1, SS2	2	3-POSITION SELECTOR SWITCH, NAMEPLATE ENGRAVED "HAND/OFF/AUTO"		SQUARE D	9001KN160WP
USE w/SS3	1	2-POSITION SELECTOR SWITCH, NAMEPLATE ENGRAVED "P1 SELECTED P2"		SQUARE D	9001KN199WP
USE w/PL1	1	PILOT LIGHT, NAMEPLATE ENGRAVED "SYSTEM FAULT"		SQUARE D	9001KN199WP
USE w/PB1	1	PUSH BUTTON, NAMEPLATE ENGRAVED "MASTER ALARM RESET"		SQUARE D	9001KN199WP
PB1	1	PUSH BUTTON, 1 N.O./1 N.C. CONTACT		SQUARE D	9001KR1BH13
EFTR	1	RJ45 FEEDTHRU RECEPTACLE/D-SIZED		NEUTRIK	NE8F0P
-	1	DATA-LINC 900 MHZ-YAGI ANTENNA w/MOUNTING BRACKET		DATA-LINC	A-Y11B
ISS-1, 2	2	INTRINSICALLY SAFE SWITCH		SYMCOM	ISS-100
ISB1	1	INTRINSIC SAFETY BARRIER		STAHL	9001/01-280-100-101
-	1	GROUND BAR		ILSCO	D167-6
LSH-1, LSL-1	2	FLOAT SWITCH w/40 FT. CABLE		REFER TO SPECIFICATIONS	
LT-1	1	LEVEL TRANSDUCER 0-5 PSIG w/SURGE PROTECTOR PSI		REFER TO SPECIFICATIONS	
PM	1	PHASE MONITORING RELAY		REFER TO SPECIFICATIONS	
RADIO	1	DATA-LINC		DATA-LINC	SRM 6230



PLC BLOCK DIAGRAM

**Gipe Associates, Inc.**  
 CONSULTING ENGINEERS  
 www.gipe.net

1228 East Joppa Road, Suite 102  
 Towson, Maryland 21286  
 Baltimore, Maryland 410.822.2420  
 Easton, Maryland 410.822.8688  
 W.O.# 24039

"THIS DRAWING AND THE DESIGN AND CONSTRUCTION FEATURES DISCLOSED ARE PROPRIETARY TO GIPE ASSOCIATES, INC. AND SHALL NOT BE ALTERED OR REUSED IN WHOLE OR IN PART WITHOUT THE EXPRESS WRITTEN PERMISSION OF GIPE ASSOCIATES, INC. Copyright © 2024"

PCP DETAILS, SCHEDULES & DIAGRAM

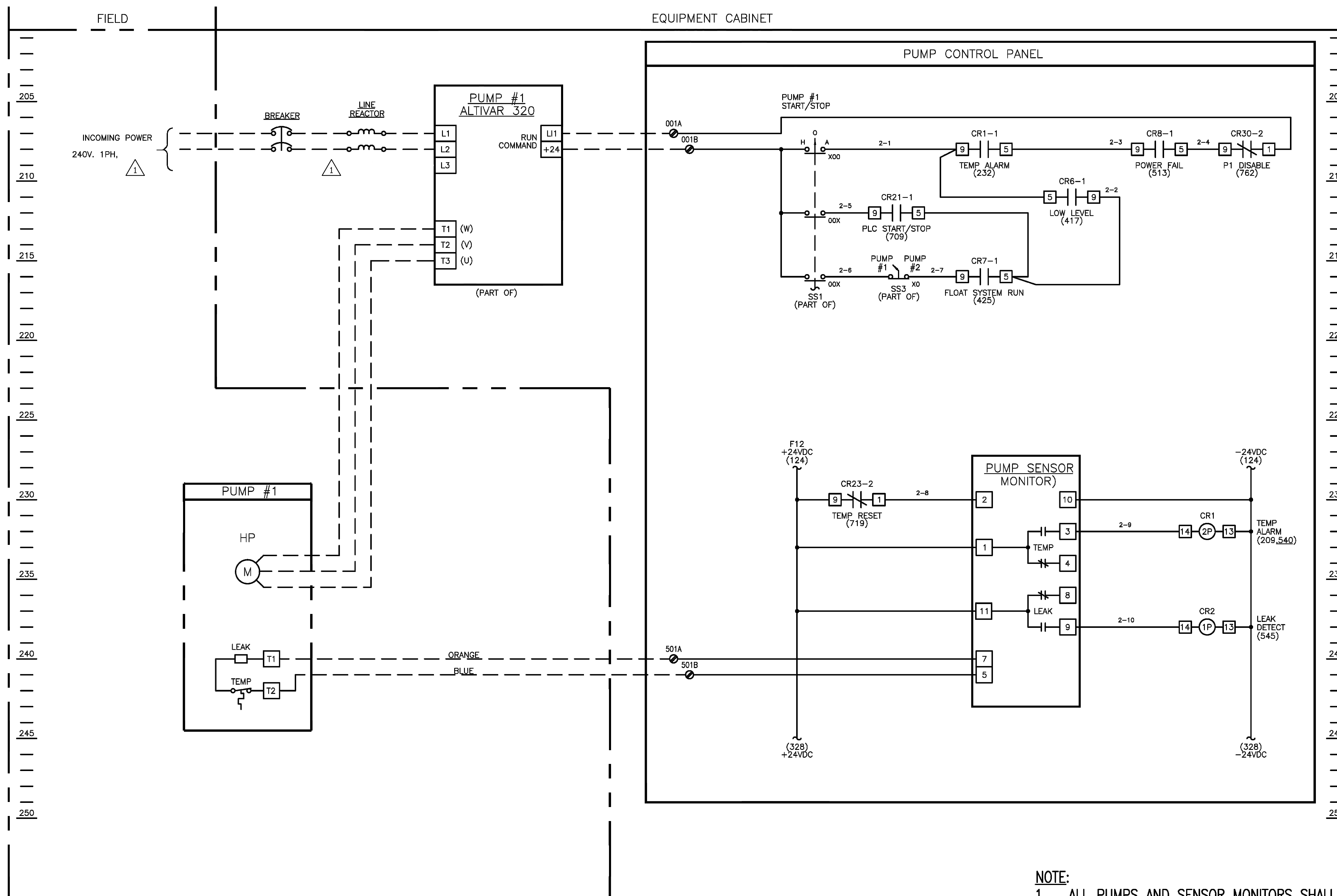
for  
**LEEWARD CHASE**  
 SUSSEX COUNTY, DELAWARE  
 Prepared for: Wakefield Development, LLC

Date: 8/24  
 Job Number: G2107-4  
 Scale: AS SHOWN  
 Drawn By: JLP  
 Designed By: DCL  
 Approved By: DCL

Sheet No.: **E-3**

File Name: G21074-PUMPSTATION





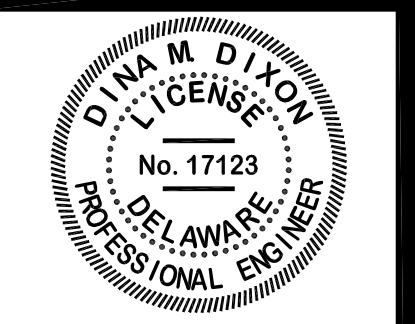
**NOTE:**  
 1. ALL PUMPS AND SENSOR MONITORS SHALL BE FLYGT PRODUCTS UNLESS OTHERWISE APPROVED BY COUNTY.

SCED DETAIL I-11 (4/25/2023)

PROFESSIONAL CERTIFICATION:  
 I HEREBY CERTIFY THAT THESE DOCUMENTS WERE PREPARED OR APPROVED BY ME, AND THAT I AM A DULY LICENSED PROFESSIONAL ENGINEER UNDER THE LAWS OF THE STATE OF DELAWARE, LICENSE No. 17123, EXPIRATION DATE: 06/30/2026.

**solutions**  
 Integrated Planning  
 Engineering & Management, LLC

303 North Bedford Street  
 Georgetown, DE 19547  
 T. 302.297.9215  
 3003 Mount Mill Road  
 Salisbury, MD 21804  
 F. 410.572.8833  
 www.solutionsipem.com Copyright © 2022



Date: 8/6/2024

REVISIONS		DATE	DESCRIPTION
NO.	DATE	DESCRIPTION	
1	8/30/24	GAH REVISION	

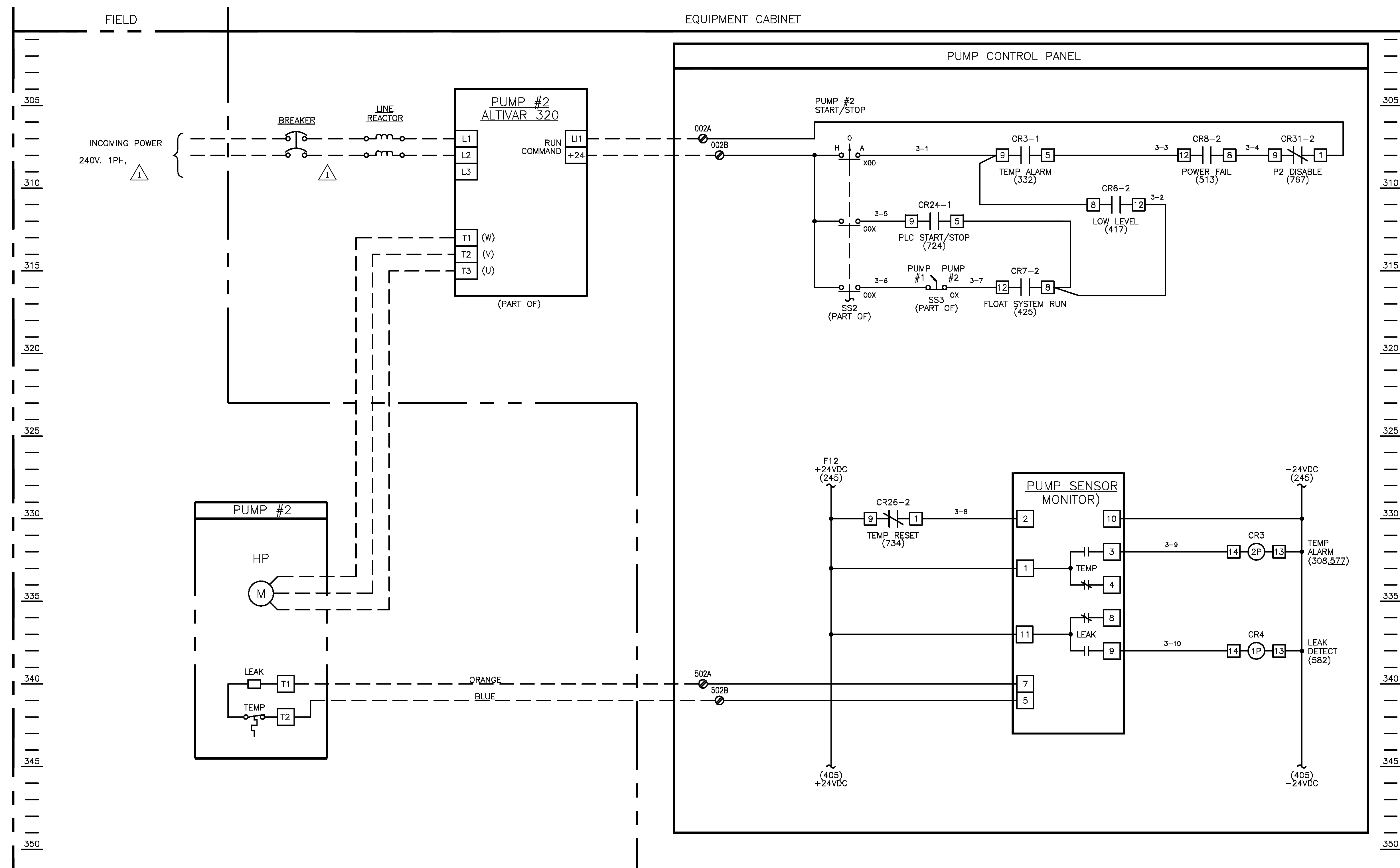
PCF DIAGRAMS  
 for  
**LEEWARD CHASE**  
 SUSSEX COUNTY, DELAWARE  
 Prepared for: Wakefield Development, LLC

Date:	8/24
Job Number:	G21074
Scale:	AS SHOWN
Drawn By:	JLP
Designed By:	DKJ
Approved By:	DKJ

Sheet No.: **E-5**  
 File Name: G21074-PUMPSTATION

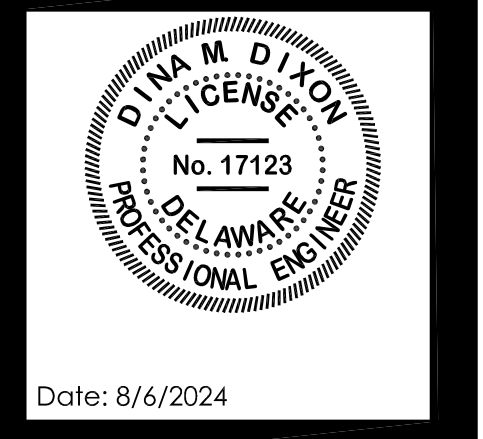
**Gipe Associates, Inc.**  
 CONSULTING ENGINEERS  
 1228 East Joppa Road, Suite 102  
 Towson, Maryland 21286  
 Baltimore, Maryland  
 Easton, Maryland  
 W.O.# 24039  
 www.gipe.net  
 410.822.2420  
 410.822.8688

"THIS DRAWING AND THE DESIGN AND CONSTRUCTION FEATURES DISCLOSED ARE PROPRIETARY TO GIPE ASSOCIATES, INC. AND SHALL NOT BE ALTERED OR REUSED IN WHOLE OR IN PART WITHOUT THE EXPRESS WRITTEN PERMISSION OF GIPE ASSOCIATES, INC. Copyright © 2024"



**NOTE:**  
 1. ALL PUMPS AND SENSOR MONITORS SHALL BE FLYGT PRODUCTS UNLESS OTHERWISE APPROVED BY COUNTY.

SCED DETAIL I-12 (4/25/2023)



REVISIONS		DATE	DESCRIPTION
NO.	DATE	DESCRIPTION	
1	8/30/24	GA1 REVISION	

PCF DIAGRAMS  
 for  
**LEEWARD CHASE**  
 SUSSEX COUNTY, DELAWARE  
 Prepared for: Wakefield Development, LLC

Date:	8/24
Job Number:	G21074
Scale:	AS SHOWN
Drawn By:	JLP
Designed By:	DKJ
Approved By:	DKJ



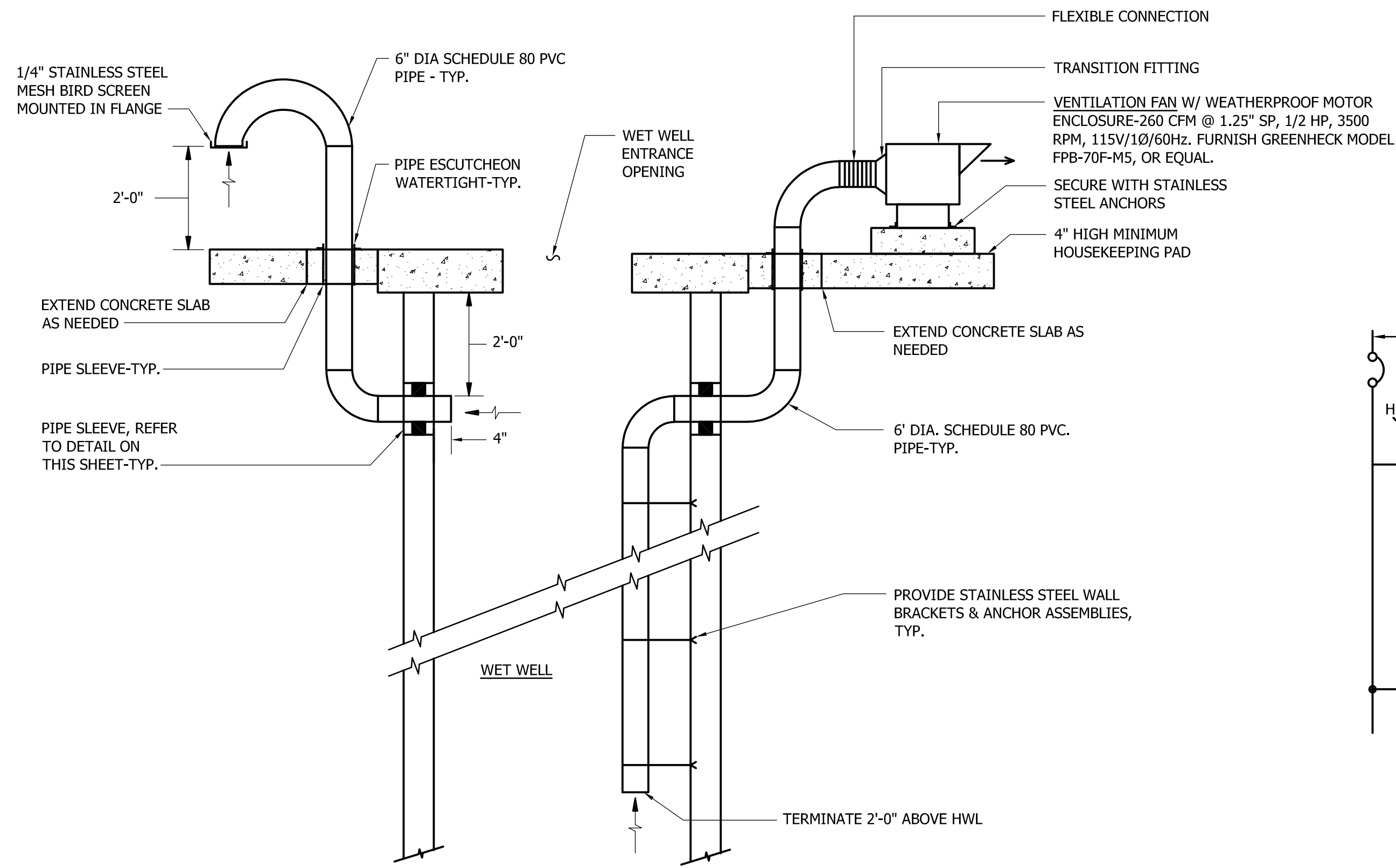




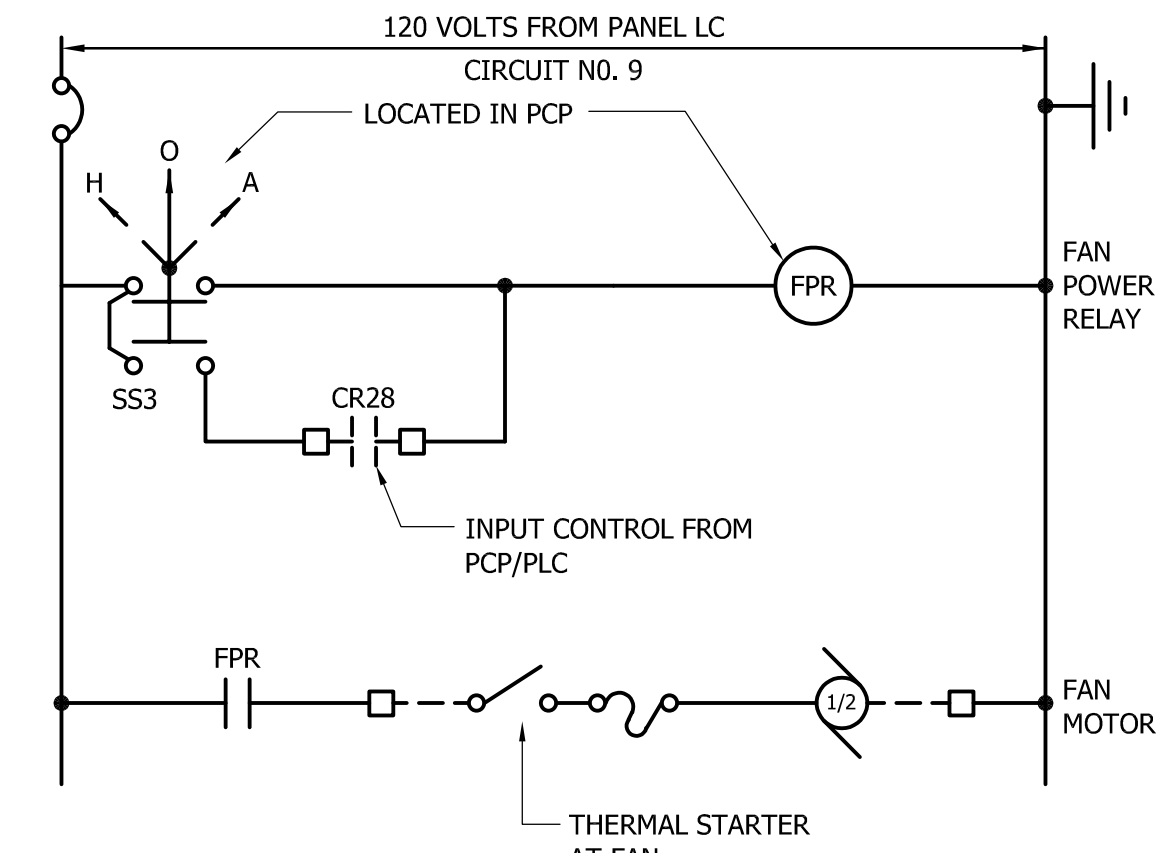








**DETAIL - WET WELL VENTILATION FAN INSTALLATION**  
NO SCALE



**WET WELL SUPPLY FAN CONTROL DIAGRAM**

PANEL SCHEDULE : "LC" 240/120V., 1 PHASE, 3 WIRE

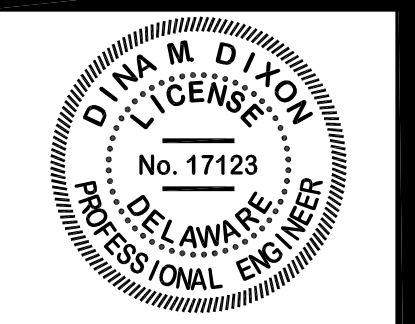
CIRC. NO.	FOR	BREAKERS			CIRC. NO.	FOR	BREAKERS		
		FRM.	P	TRIP			FRM.	P	TRIP
1	S.E.C. LIGHTS	100	1	20	2	PCP	100	1	20
3	S.E.C. RECEPTACLE	100	1	20	4	SPARE	100	1	20
5	S.E.C. HEATERS	100	1	20	6	GEN. BLOCK HEATER	100	1	20
7	S.E.C. COOLING FANS	100	1	20	8	GEN. BATTERY CHARGER	100	1	20
9	W.W. SUPPLY FAN	100	1	20	10	SITE LIGHT	100	1	20
11	SPACE W/BUS	-	1	-	12	SPACE W/BUS	-	1	-
13	SPACE W/BUS	-	1	-	14	SPACE W/BUS	-	1	-
15	SPACE W/BUS	-	1	-	16	SPACE W/BUS	-	1	-

125 A. BUS CAPACITY  
50 A. MAIN BREAKER

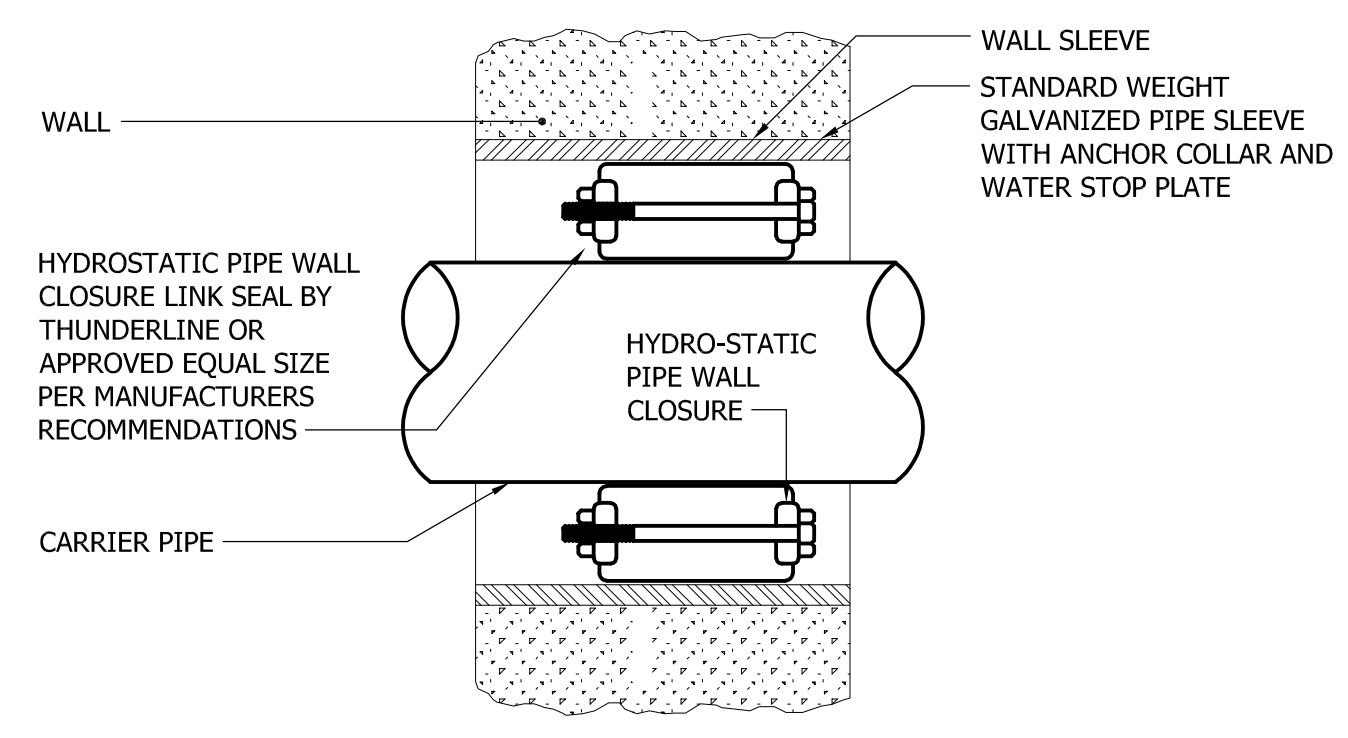
PROFESSIONAL CERTIFICATION:  
I HEREBY CERTIFY THAT THESE DOCUMENTS WERE PREPARED OR APPROVED BY ME, AND THAT I AM A DULY LICENSED PROFESSIONAL ENGINEER UNDER THE LAWS OF THE STATE OF DELAWARE, LICENSE No. 17123, EXPIRATION DATE: 06/30/2026.

**solutions**  
Integrated Planning  
Engineering & Management, LLC

303 North Bedford Street  
Georgetown, DE 19947  
T. 302.297.9215  
3003 Month Mill Road  
Salisbury, MD 21804  
T. 410.572.8833  
www.solutionsinc.com Copyright © 2022

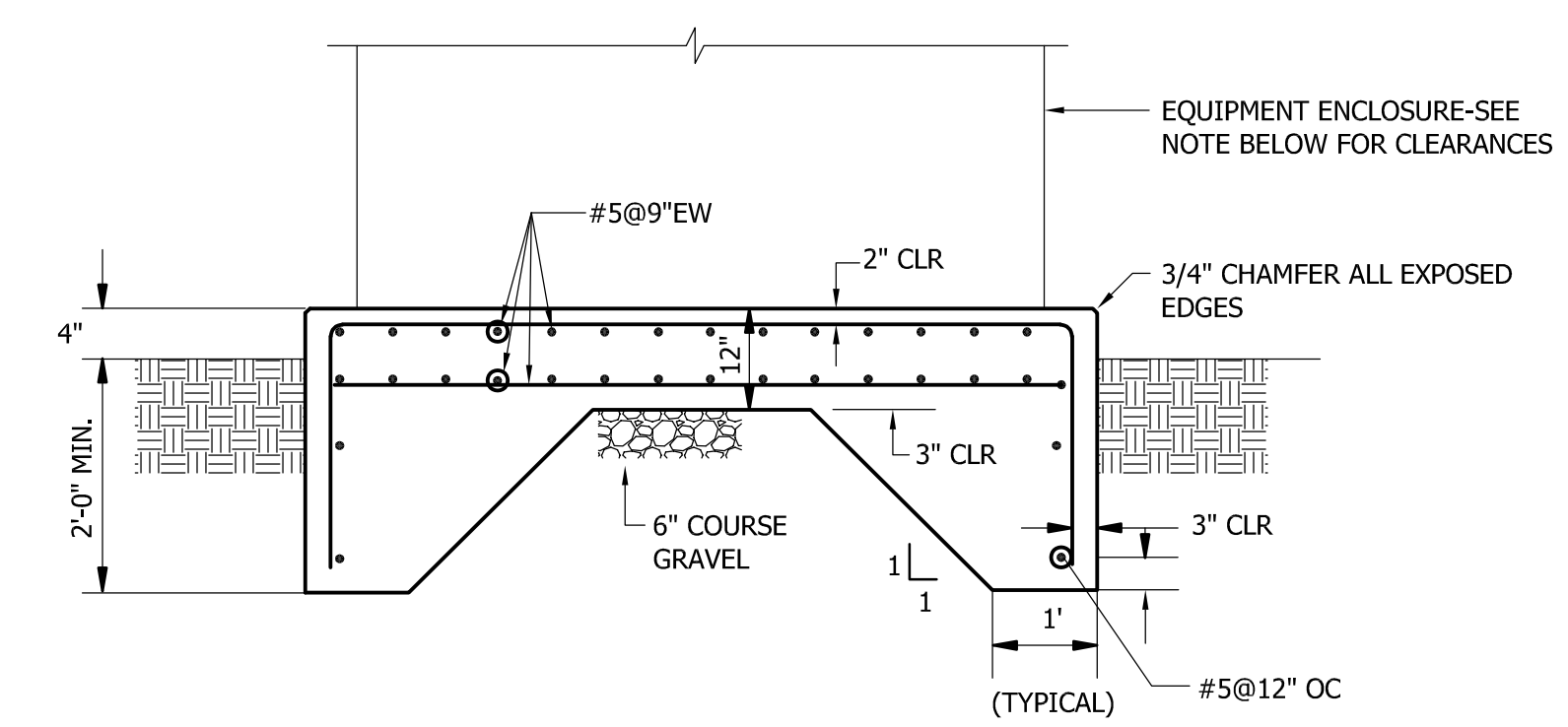


Date: 8/6/2024



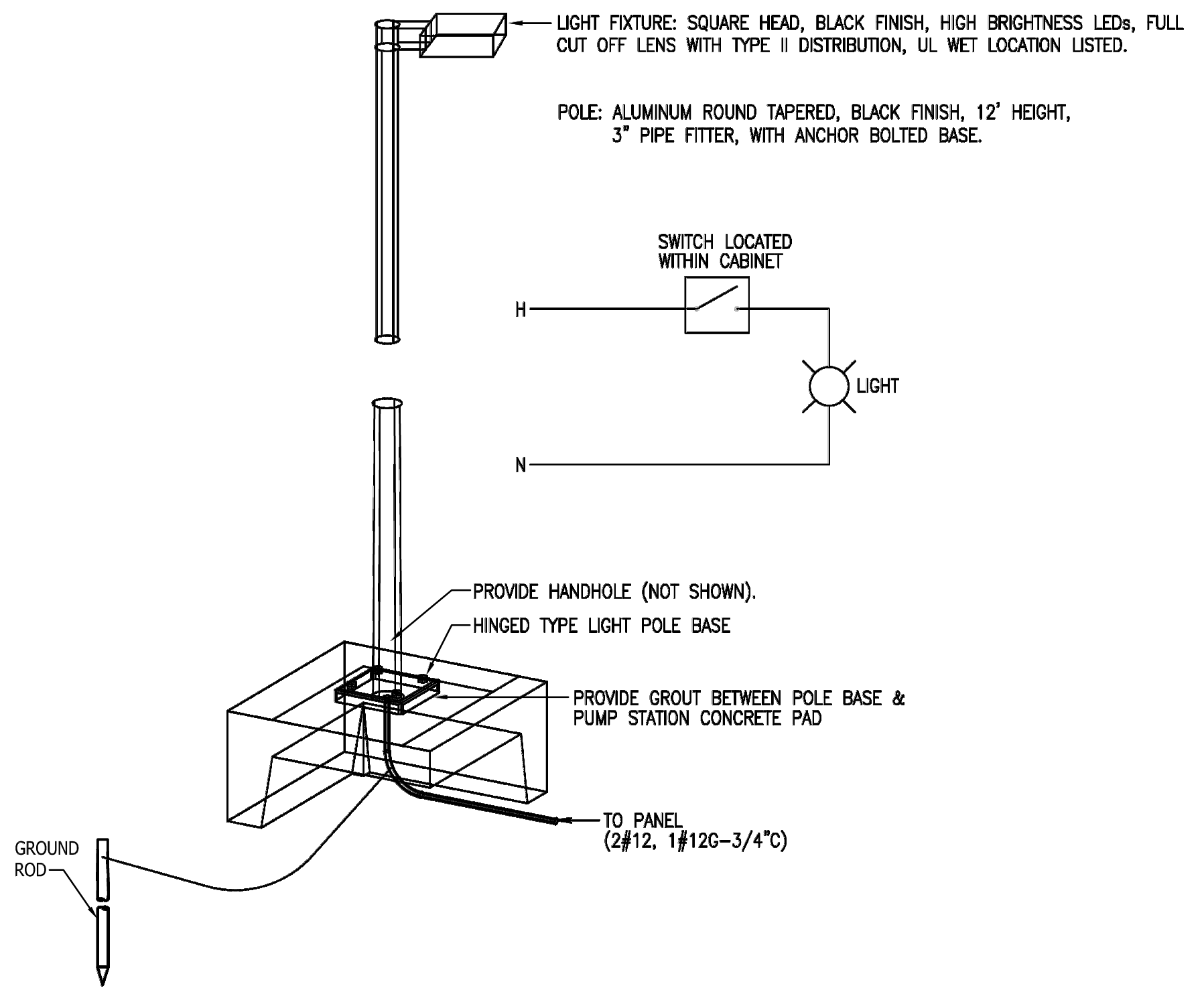
**DETAIL - TYPICAL PIPE SLEEVE THRU EXTERIOR WALL**

1. DETAIL TYPICAL FOR ABOVE GRADE AND BELOW GRADE

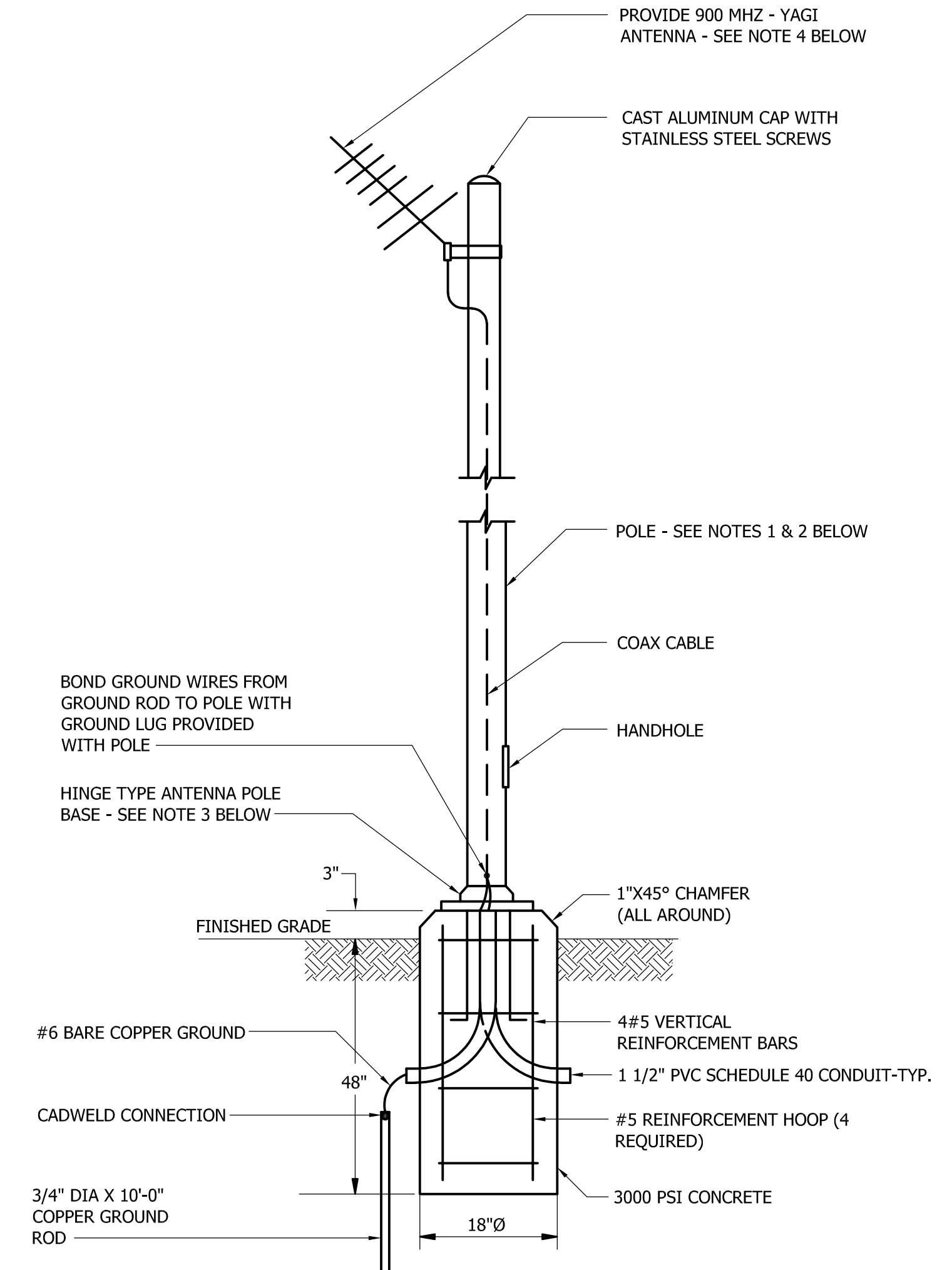


**DETAIL - TYPICAL GENERATOR/SERVICE EQUIPMENT CONCRETE PAD**  
SCALE: NONE

- CLEARANCES:**
1. GENERATOR - 12" ON ALL SIDES.
  2. SERVICES EQUIPMENT CABINET - 5'-0" ON POWER SIDE & CONTROL SIDE & 6" BOTH ENDS.



**DETAIL - SITE LIGHT - SCED**  
DETAIL E-2 (REV. 12/21)  
SCALE: NONE



**DETAIL - SCADA ANTENNA & POLE/FOUNDATION**  
SCALE: NONE

**NOTES**

1. POLE HEIGHT WILL SHALL BE 20'-40' AND SHALL BE DETERMINED BY THE COUNTY DURING CONSTRUCTION AFTER COORDINATES HAVE BEEN SUBMITTED AND A RADIO PATH REPORT HAS BEEN COMPLETED BY THE COUNTY.
2. POLES SHALL BE HINGED ALUMINUM FOR ANTENNA HEIGHTS 20' AND BELOW. POLES SHALL BE NON HINGED ALUMINUM FOR ANTENNA HEIGHTS GREATER THAN 20'.
3. MOUNTING STUDS SHALL BE POURED INTO CONCRETE BASE PER MANUFACTURES RECOMMENDATIONS. LAGS OR DRIVE PINS WILL NOT BE PERMITTED.
4. THE CONTRACTOR SHALL ADJUST THE DIRECTION OF THE ANTENNA AS DIRECTED BY THE COUNTY.

REVISIONS

NO.	DATE	DESCRIPTION

DETAILS, DIAGRAM, & SCHEDULES  
for  
**LEEWARD CHASE**  
SUSSEX COUNTY, DELAWARE  
Prepared for: Wakefield Development, LLC

Date:	8/24
Job Number:	G21074
Scale:	AS SHOWN
Drawn By:	JLP
Designed By:	DKJ
Approved By:	DKJ

Sheet No.:  
**E-12**  
File Name:  
G21074-PUMPSTATION

**Gipe Associates, Inc.**  
CONSULTING ENGINEERS  
www.gipe.net  
1228 East Joppa Road, Suite 102  
Towson, Maryland 21286  
Baltimore, Maryland  
Easton, Maryland  
W.O.# 24039

"THIS DRAWING AND THE DESIGN AND CONSTRUCTION FEATURES DISCLOSED ARE PROPRIETARY TO GIPE ASSOCIATES, INC. AND SHALL NOT BE ALTERED OR REUSED IN WHOLE OR IN PART WITHOUT THE EXPRESS WRITTEN PERMISSION OF GIPE ASSOCIATES, INC. Copyright © 2024"