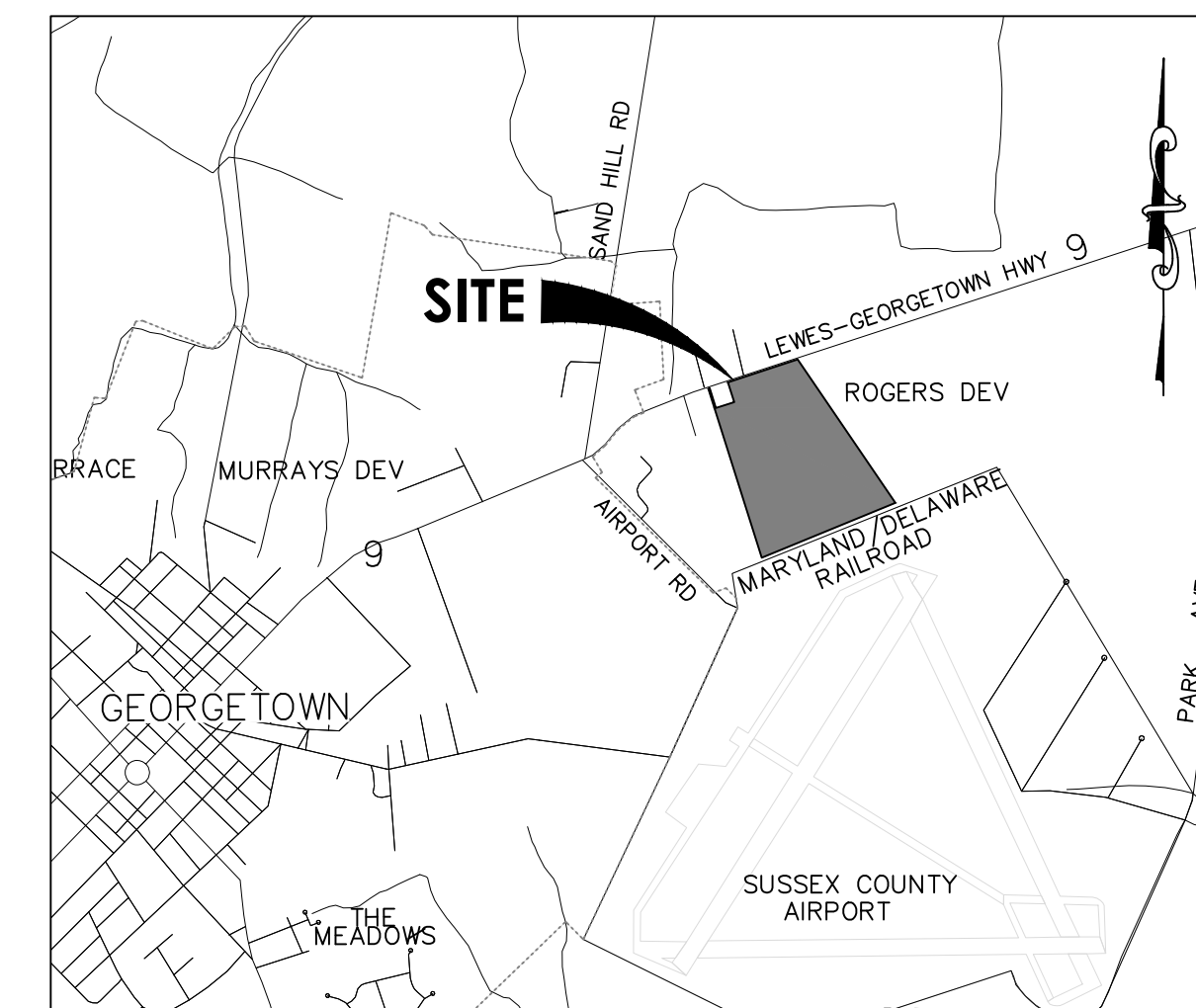


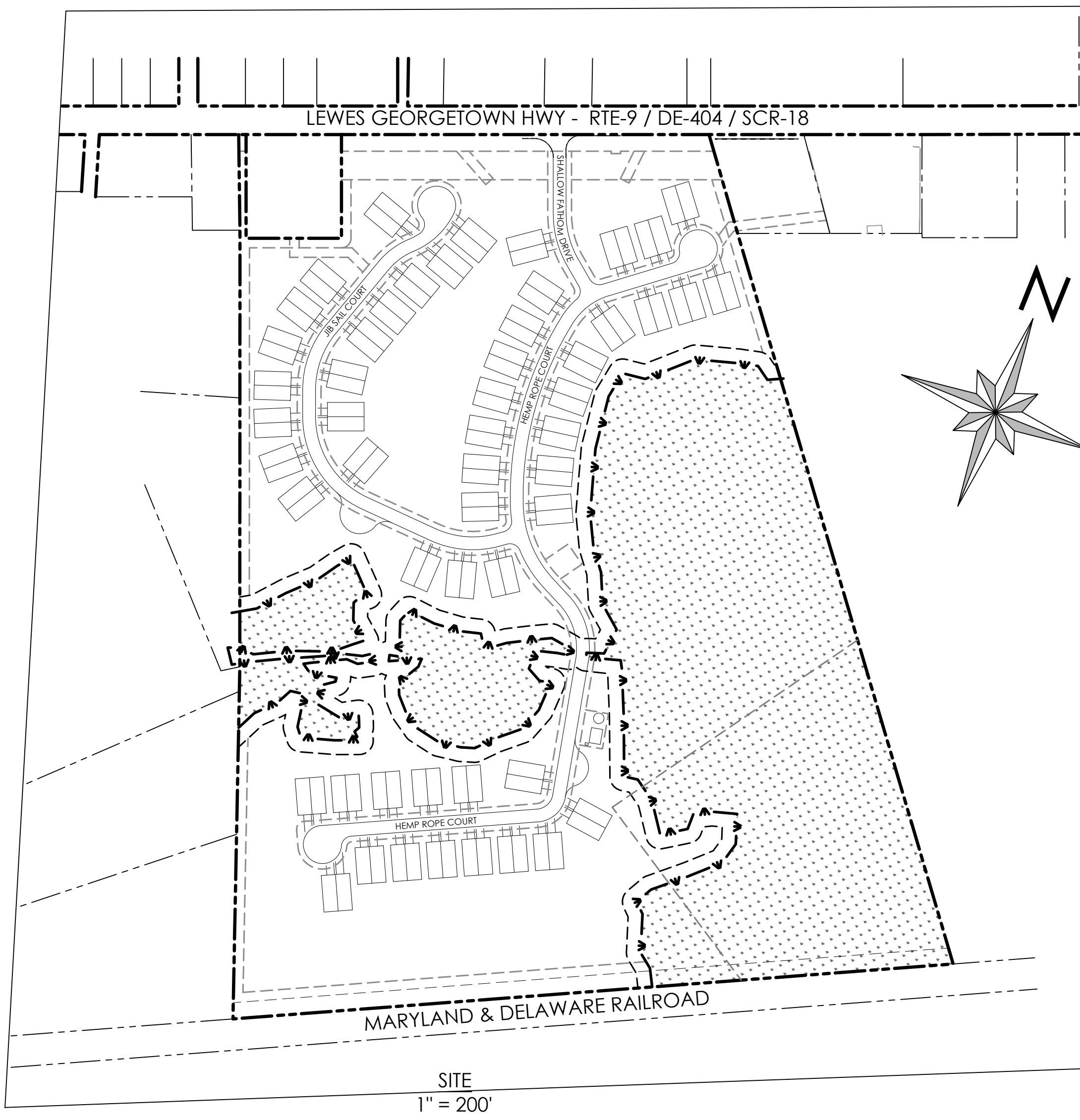
ROADWAY, STORM DRAIN, SEWER, WATER, & ESC FOR LEEWARD CHASE

GEORGETOWN HUNDRED
SUSSEX COUNTY, DELAWARE
FOR
WAKEFIELD DEVELOPMENT, LLC



VICINITY MAP
SCALE: 1"=2000'

LEGEND		EXISTING	PROPOSED
PROPERTY LINE		---	---
EASEMENT LINE		---	---
SETBACK LINE		---	---
CONCRETE MONUMENT FOUND	CMF	□	N/A
IRON PIPE FOUND	IPF	●	N/A
BENCH MARK	ELEV.	▲	N/A
SPOT ELEV. LABEL		19.25	
MAJOR CONTOUR		---10---	---10---
MINOR CONTOUR		---7---	---7---
ROAD CENTERLINE		---	---
EDGE OF CONCRETE		---	---
EDGE OF PAVEMENT		---	---
EDGE OF GRAVEL		---	N/A
PAINT STRIPE		---	---
CURB		---	---
PAVEMENT HATCH		▨	▨
CONCRETE HATCH		▨	▨
BUILDING OUTLINE		---	---
SIDEWALK		---	---
SIDEWALK HATCH		▨	▨
FENCE LINE		x	N/A
SIGN		▲	N/A
EDGE OF WETLAND		---W---	N/A
FLOODPLAIN		---	N/A
STORM MANHOLE		⊙	⊙
CURB INLET		⊙	⊙
YARD INLET		⊙	⊙
STORM PIPE		---	---
RIP RAP		▨	▨
SANITARY MANHOLE		⊙	⊙
SANITARY CLEANOUT		○	○
SANITARY PIPE		SS	SS
WATER VALVE		W	W
WATER PIPE		W	W
FIRE HYDRANT		⊙	⊙
OVERHEAD ELECTRIC		---	N/A
UNDERGROUND ELECTRIC		---	N/A
UNDERGROUND TELECOMMUNICATIONS		---	N/A
UTILITY POLE		⊙	N/A
LIGHT POLE		★	★
DECIDUOUS TREE		●	N/A
CONIFEROUS TREE		●	N/A
TREE LINE		---	---



SITE DATA:

OWNER: MOORES MEADOWOOD FARM, LLC
P.O. BOX 447
GEORGETOWN, DE 19947

DEVELOPER: WAKEFIELD DEVELOPMENT, LLC
448 VIKING DRIVE, SUITE 220
VIRGINIA BEACH, VA 23452
CONTACT: JACK HAESE

**ENGINEER/
LAND PLANNER:** SOLUTIONS IPEM, LLC
303 NORTH BEDFORD STREET
GEORGETOWN, DE 19947
PHONE: 302.297.9215
CONTACT: JIM ERIKSEN, P.E.

- TM 135-15.00-98.00 & 98.01 (2 EXISTING LOTS)
TOTAL AREA = 50.797 ± AC.
- PROPOSED LOTS: 1
 - EXISTING ZONING: AR-1
 - PRESENT USE: AGRICULTURAL AND WOODS
 - PROPOSED ZONING AR-1 W/ CONDITIONAL USE
 - PROPOSED USE: DUPLEX COMMUNITY
SETBACKS:
FRONT YARD = 40'
SIDE YARD = 10'
REAR YARD = 10'
MAXIMUM BUILDING HEIGHT: 42'
DUPLEX BUILDINGS = 53
TOTAL UNITS = 106
 - BOUNDARY AND TOPOGRAPHY AS SHOWN HEREON ARE AS PROVIDED BY SOLUTIONS IPEM, LLC
 - WATER SUPPLY: TIDEWATER UTILITIES, INC.
 - SANITARY SEWER: SUSSEX COUNTY
 - PROPERTY IS LOCATED WITHIN FLOOD ZONE X (AREAS DETERMINED TO BE OUTSIDE THE 0.2% ANNUAL CHANCE FLOODPLAIN) BASE FLOOD ELEVATIONS DETERMINED, PER FIRM MAP NUMBER 1000SC0325L, MAP REVISED 6/20/2018
 - PROPERTIES AREA LOCATED IN STATE STRATEGIES LEVELS 2, 3 & 4.
 - PROJECT DATUM:
HORIZONTAL: DELAWARE STATE PLAN NAD 83
VERTICAL DATUM: NAVD 88

FINAL SITE PLAN INDEX

- 1 FINAL SITE PLAN COVER SHEET
- 2 EXISTING CONDITIONS PLAN A
- 3 EXISTING CONDITIONS PLAN B
- 4 FINAL SITE PLAN A
- 5 FINAL SITE PLAN 6
- 6 DELDOT DRAINAGE EASEMENTS

DELDOT PLAN INDEX

- 1 - TITLE
- 2 - LEGEND
- 3 - PLAN SHEET INDEX
- 4 - CONSTRUCTION & MOT NOTES
- 5-6 - TYPICAL SECTIONS
- 7 - HORIZONTAL AND VERTICAL CONTROL
- 8 - PHASE 1 CONSTRUCTION PLAN
- 9 - 10 - CONSTRUCTION PLANS
- 11 - 12 - GRADING PLANS
- 13 - PROFILES AND CONSTRUCTION DETAILS
- 14 - 15 - SIGNING AND STRIPING PLANS
- 16 - 26 - LEWES GEORGETOWN HWY CROSS SECTIONS
- 27 - 28 - EROSION AND SEDIMENT CONTROL PLANS

NOTES:

1. ALL ON-SITE STREETS ARE PRIVATE AND SHALL BE MAINTAINED BY THE OWNER. THE PERPETUAL MAINTENANCE OF THE STREETS SHALL BE BY THE OWNER.
2. STORMWATER MANAGEMENT AND STORM DRAINAGE SHALL BE IN ACCORDANCE WITH THE SUSSEX COUNTY CONSERVATION DISTRICT AND SUSSEX COUNTY ENGINEERING REQUIREMENTS. THE SITE IS TO BE TREATED BY MULTIPLE WET PONDS. THE PERPETUAL MAINTENANCE OF THE ON-SITE STORMWATER MANAGEMENT FACILITIES AND STORM DRAINAGE SYSTEM SHALL BE BY THE OWNER.
3. ALL OPEN SPACE, INCLUDING BUFFERS AND FOREST STRIPS, SHALL BE MAINTAINED BY THE OWNER.
4. POTABLE WATER, SANITARY SEWER, STORM DRAINAGE, STREET PAVEMENT SHALL BE CONSTRUCTED BY DEVELOPER. PHASING OF IMPROVEMENTS SHALL BE PER COUNTY AND CONSERVATION DISTRICT REQUIREMENTS.
5. THE PROPERTY IS NOT LOCATED WITHIN ANY TRANSPORTATION IMPROVEMENT DISTRICTS.

CONSTRUCTION PLANS

- | | | | |
|--|--------------------------------|---|---|
| 1 - COVER | 15 - DETAILS 1 | 29 - WATER PLAN A | 43 - EROSION AND SEDIMENT CONTROL NOTES & DETAILS 4 |
| 2 - GENERAL NOTES | 16 - DETAILS 2 | 30 - WATER PLAN B | 44 - EROSION AND SEDIMENT CONTROL NOTES & DETAILS 5 |
| 3 - EXISTING CONDITIONS | 17 - DETAILS 3 | 31 - WATER PROFILES | 45 - EROSION AND SEDIMENT CONTROL NOTES & DETAILS 6 |
| 4 - INDEX PLAN | 18 - SANITARY SEWER INDEX | 32 - WATER DETAILS 1 | 46 - POST CONSTRUCTION SITE SWM |
| 5 - ROAD AND STORM DRAIN PLAN A | 19 - SANITARY SEWER PLAN A | 33 - WATER DETAILS 2 | 47 - POST CONSTRUCTION SWM PLAN - WET POND 1 |
| 6 - ROAD AND STORM DRAIN PLAN B | 20 - SANITARY SEWER PLAN B | 34 - WATER DETAILS 3 | 48 - POST CONSTRUCTION SWM PLAN - WET POND 2 |
| 7 - ROAD PROFILES | 21 - SANITARY SEWER PROFILES 1 | 35 - TUI NOTES | 49 - POST CONSTRUCTION SWM PLAN - WET POND 3 |
| 8 - DETAILED INTERSECTIONS GRADING | 22 - SANITARY SEWER PROFILES 2 | 36 - EROSION & SEDIMENT CONTROL COVER | 50 - POST CONSTRUCTION SWM PLAN - WET POND 4 |
| 9 - STORM DRAIN PROFILES 1 | 23 - SANITARY SEWER DETAILS 1 | 37 - STORMWATER AND BULK EARTHWORK PHASING PLAN | 51 - POST CONSTRUCTION SWM PLAN - WET POND 4-2 |
| 10 - STORM DRAIN PROFILES 2 | 24 - SANITARY SEWER DETAILS 2 | 38 - PRE-CONSTRUCTION SITE SWM PLAN | 52 - PHASING PLAN |
| 11 - STORM DRAIN PROFILES 3 | 25 - PUMPSTATION SITE PLAN | 39 - CONSTRUCTION SITE SWM PLAN | E-1 - E-12 - PUMP STATION ELECTRICAL PLANS |
| 12 - STORM DRAIN PIPE AND STRUCTURE CHARTS | 26 - PUMPSTATION DETAILS 1 | 40 - EROSION AND SEDIMENT CONTROL NOTES & DETAILS 1 | |
| 13 - BULK GRADING PLAN A | 27 - PUMPSTATION DETAILS 2 | 41 - EROSION AND SEDIMENT CONTROL NOTES & DETAILS 2 | |
| 14 - BULK GRADING PLAN B | 28 - FIRE MARSHAL PLAN | 42 - EROSION AND SEDIMENT CONTROL NOTES & DETAILS 3 | |

WETLAND STATEMENT

I, Edward M. Launay, PWS, STATES THAT THE BOUNDARIES OF WATERS OF THE UNITED STATES INCLUDING WETLANDS SUBJECT TO THE CORPS OF ENGINEERS REGULATORY PROGRAM DELINEATED UPON THIS PLAN HAVE BEEN DETERMINED USING MY PROFESSIONAL JUDGMENT IN ACCORDANCE WITH THE 1987 CORPS OF ENGINEERS WETLANDS DELINEATION MANUAL, ATLANTIC GULF COAST REGIONAL SUPPLEMENT, REGULATIONS AND SUPPLEMENTAL GUIDANCE (33 CFR 328.3(a)(8)), Waters of the U.S. Definition/CECW-OR, 10-7-1991, Questions and Answers on the 1987 COE Manual/CECW-OR, 9-26-1990, RCL 90-7/CECW-OR, 3-6-1992, Clarification and Interpretation of the 1987 Manual). THIS DELINEATION HAS NOT BEEN CONDUCTED FOR USDA PROGRAM OR AGRICULTURAL PURPOSES.

EDWARD M. LAUNAY, PWS No. 875 DATE
SOCIETY OF WETLANDS SCIENTISTS
CORPS OF ENGINEERS
(CERTIFIED WETLAND DELINEATOR WDCP93MD05100368)

ENGINEER'S CERTIFICATION

I HEREBY CERTIFY THAT THESE DRAWINGS HAVE BEEN PREPARED UNDER MY SUPERVISION.

JIM ERIKSEN, PE DATE

DEVELOPER'S CERTIFICATION

THE DEVELOPER, WAKEFIELD DEVELOPMENT, LLC, HEREBY CERTIFIES THAT THESE DRAWINGS HAVE BEEN APPROVED.

JACK HAESE DATE

APPROVED, SUSSEX COUNTY ENGINEER AGREEMENT # 1183 DATE

solutions
www.solutionsipem.com Copyright © 2022

303 North Bedford Street
Georgetown, DE 19947
T. 302.297.9215

3033 Manthill Hill Road
Salisbury, MD 21804
T. 410.572.8833

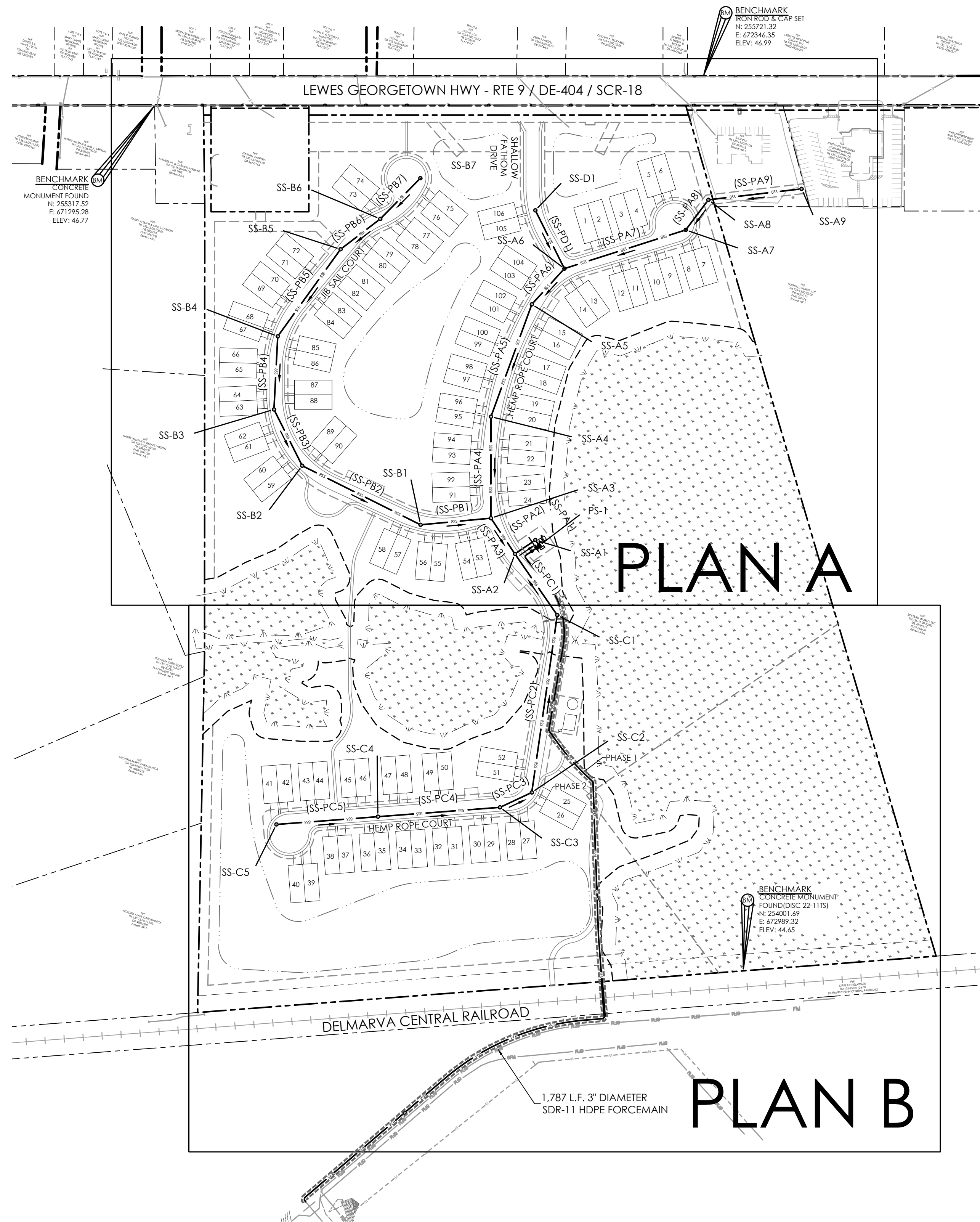
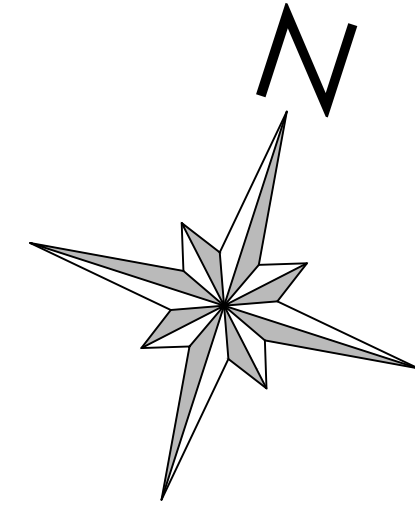
DATE: 9/20/2024

NO.	DATE	DESCRIPTION
1	6/20/2024	ADDRESSED SCE, SCD, & TUI COMMENTS
2	7/25/2024	ADDRESSED TUI WATER COMMENTS
3	7/31/2024	REVISE SEWER FORCEMAIN RAIL CROSSING
4	8/6/2024	REVISE SEWER FORCEMAIN RAIL CROSSING
5	8/26/2024	ADDRESSED TUI WATER COMMENTS
6	9/20/2024	UPDATED TUI WATER DETAILS

COVER for
LEEWARD CHASE
SUSSEX COUNTY, DELAWARE
Prepared for: Wakefield Development, LLC

Date: 4/12/23
Job Number: G21074
Scale: AS NOTED
Drawn By: JPR
Designed By: JPR
Approved By: JRE

Sheet No.: 1
File Name: G21074-Cover



SITE DATA:

OWNER: MOORES MEADOWOOD FARM, LLC
P.O BOX 447
GEORGETOWN, DE 19947

APPLICANT/
DEVELOPER: WAKEFIELD DEVELOPMENT, LLC
448 VIKING DRIVE, SUITE 220
VIRGINIA BEACH, VA 23452
CONTACT: JACK HAESE

ENGINEER: SOLUTIONS IPEM
303 NORTH BEDFORD STREET
GEORGETOWN, DE 19947
PHONE: 302.297.9215
CONTACT: JIM ERIKSEN, PE

- TAX MAP: 234-15.00-98.00 & 98.01 (2 EXISTING LOTS)
SITE AREA = 50.797 ± ACRES
- PROPOSED USE: DUPLEX COMMUNITY
DUPLEX BUILDINGS: 53
TOTAL UNITS: 106
- EXISTING ZONING: AR-1
- FLOOD ZONE: THE PROPERTY IS LOCATED WITHIN FLOOD_ZONE X (AREAS DETERMINED TO OUTSIDE THE 0.2% ANNUAL CHANCE FLOODPLAIN), PER FIRM MAP NUMBER 10005C0325L, MAP REVISED 6/20/2018
- WATER SUPPLY: TIDEWATER UTILITIES INC.
- SANITARY SEWER: SUSSEX COUNTY
- TOPOGRAPHY AND BOUNDARY SHOWN HEREIN ARE AS PROVIDED BY SOLUTIONS IPEM LLC.

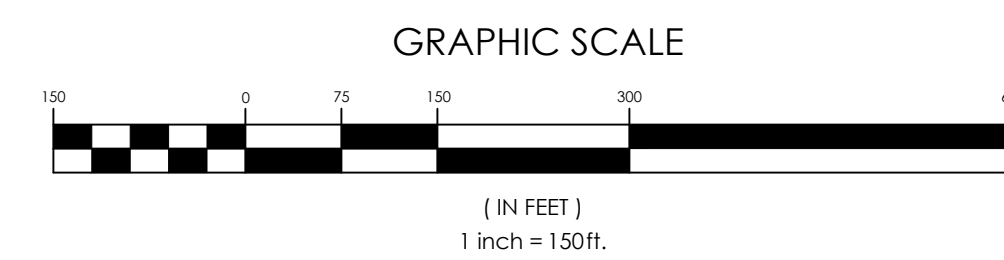
SEWER PLAN SHEETS

- 18 - SANITARY SEWER INDEX
- 19 - SANITARY SEWER PLAN A
- 20 - SANITARY SEWER PLAN B
- 21 - SANITARY SEWER PROFILES 1
- 22 - SANITARY SEWER PROFILES 2
- 23 - SANITARY SEWER DETAILS 1
- 24 - SANITARY SEWER DETAILS 2
- 25 - PUMPSTATION SITE PLAN
- 26 - PUMPSTATION DETAILS 1
- 27 - PUMPSTATION DETAILS 2

PUMP STATION DESIGN FLOW

Community	Homes	Amenities	Total EDUs
LEEWARD CHASE	106	1	107
OFFSITE CONNECTIONS	3		3
WATER TREATMENT FACILITY			1
TOTAL:			111

OFFSITE CONNECTIONS FOR PARCELS 96.00, 97.00 & 99.00



SANITARY SEWER STRUCTURE CHART				
NAME	RIM ELEV(FT)	INVERT-IN ELEV(FT) (1)	INVERT-IN ELEV(FT) (2)	INVERT-OUT ELEV(FT)
PS-1	47.33	34.66	N/A	N/A
SS-A1	47.23	34.75	N/A	34.70
SS-A2	46.09	34.95	34.95	34.90
SS-A3	46.24	35.26	35.26	35.26
SS-A4	45.89	35.93	N/A	35.88
SS-A5	45.98	36.71	N/A	36.66
SS-A6	46.27	37.06	37.06	37.01
SS-A7	46.37	37.89	N/A	37.84
SS-A8	45.52	38.17	N/A	38.12
SS-A9	46.00	N/A	N/A	38.94
SS-B1	46.13	37.73	N/A	37.68
SS-B2	46.03	38.59	N/A	38.54
SS-B3	46.42	39.03	N/A	38.98
SS-B4	46.00	39.53	N/A	39.48
SS-B5	46.37	40.24	N/A	40.19
SS-B6	46.47	40.60	N/A	40.55
SS-B7	46.07	N/A	N/A	41.07
SS-C1	46.34	37.69	N/A	37.64
SS-C2	46.02	38.84	N/A	38.79
SS-C3	45.81	39.11	N/A	39.06
SS-C4	46.37	39.91	N/A	39.86
SS-C5	45.74	N/A	N/A	40.74
SS-D1	46.33	N/A	N/A	41.33

60" MANHOLE

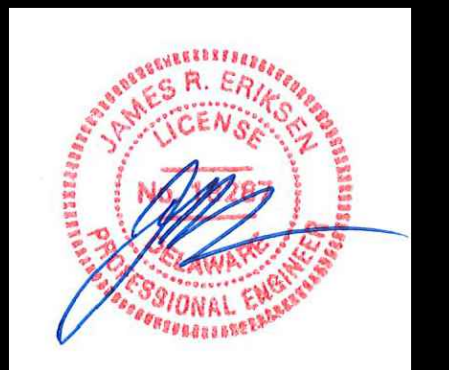
SANITARY SEWER PIPE TABLE						
NAME	SIZE (IN)	MATERIAL	LENGTH (FT)	SLOPE (%)	UP INVERT (FT)	DOWN INVERT (FT)
SS-PA1	8	PVC - SDR 35	14.00	0.30	34.70	34.66
SS-PA2	8	PVC - SDR 35	50.56	0.30	34.90	34.75
SS-PA3	8	PVC - SDR 35	88.19	0.30	35.21	34.95
SS-PA4	8	PVC - SDR 35	208.00	0.30	35.88	35.26
SS-PA5	8	PVC - SDR 35	245.00	0.30	36.66	35.93
SS-PA6	8	PVC - SDR 35	99.08	0.30	37.01	36.71
SS-PA7	8	PVC - SDR 35	260.93	0.30	37.84	37.06
SS-PA8	8	PVC - SDR 35	77.27	0.30	38.12	37.89
SS-PA9	8	PVC - SDR 35	192.31	0.40	38.94	38.17
SS-PB1	8	PVC - SDR 35	144.89	1.67	37.68	35.26
SS-PB2	8	PVC - SDR 35	271.00	0.30	38.54	37.73
SS-PB3	8	PVC - SDR 35	129.00	0.30	38.98	38.59
SS-PB4	8	PVC - SDR 35	150.00	0.30	39.48	39.03
SS-PB5	8	PVC - SDR 35	220.00	0.30	40.19	39.53
SS-PB6	8	PVC - SDR 35	102.50	0.30	40.55	40.24
SS-PB7	8	PVC - SDR 35	117.00	0.40	41.07	40.60
SS-PC1	8	PVC - SDR 35	152.54	1.76	37.64	34.95
SS-PC2	8	PVC - SDR 35	367.00	0.30	38.79	37.69
SS-PC3	8	PVC - SDR 35	72.00	0.30	39.06	38.84
SS-PC4	8	PVC - SDR 35	251.00	0.30	39.86	39.11
SS-PC5	8	PVC - SDR 35	208.50	0.40	40.74	39.91
SS-PD1	8	PVC - SDR 35	133.39	3.20	41.33	37.06

NOTES:

- ALL GRAVITY-FED SANITARY SEWER PIPES WITH A DEPTH LESS THAN 12' SHALL BE SDR-35. ALL GRAVITY-FED SANITARY SEWER PIPES WITH A DEPTH GREATER THAN 12' SHALL BE SDR-26.
- ALL FITTINGS FOR GRAVITY-FED SANITARY SEWER PIPES SHALL BE SDR-26.
- THE TOTAL NUMBER OF LATERALS ASSOCIATED WITH THESE PLANS IS 110 (INCLUDING CLUBHOUSE, WATER TREATMENT FACILITY AND OFFSITE CONNECTIONS/STUBS).



303 North Bedford Street
Georgetown, DE 19947
T. 302.297.9215
www.solutionsipem.com Copyright © 2022



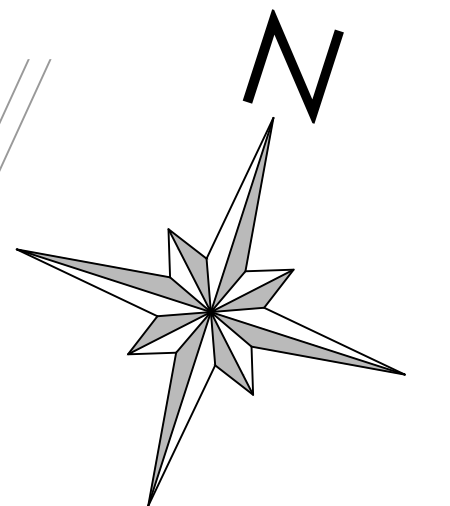
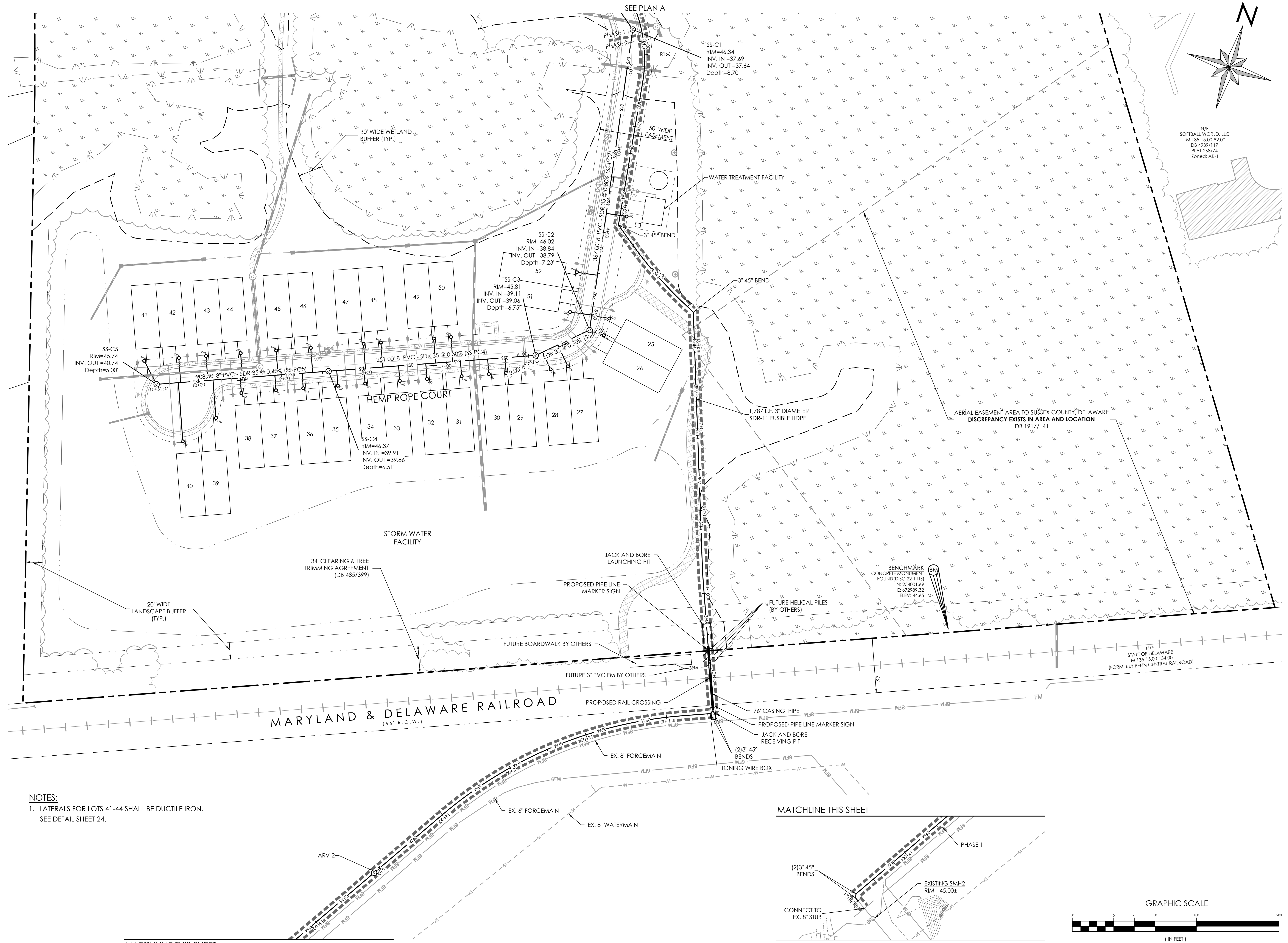
Date: 9/20/2024

REVISIONS	
NO.	DESCRIPTION
1	ADRESSED SCE, SCD, & TUI COMMENTS
2	ADRESSED TUI WATER COMMENTS
3	REVISE SEWER FORCEMAIN RAIL CROSSING
4	REVISE SEWER FORCEMAIN RAIL CROSSING
5	ADRESSED TUI WATER COMMENTS
6	UPDATED TUI WATER DETAILS

SANITARY SEWER INDEX
 for
LEEWARD CHASE
 SUSSEX COUNTY, DELAWARE
 Prepared for: Wakefield Development, LLC

Date: 4/12/23
Job Number: G21074
Scale: 1" = 150'
Drawn By: JPR
Designed By: JPR
Approved By: JRE

Sheet No.: **18**
File Name: G21074-SewerIndex



N/F
SOFTBALL WORLD, LLC
TM 135-15.00-82.00
DB 4939117
PLAT 268/74
Zoned: AR-1

solutions
Engineering & Construction

303 North Bedford Street
Georgetown, DE 19426
T. 302-271-9215
3033 Mill Hill Road
Salisbury, MD 21804
T. 410-572-8833
www.solutionsperm.com Copyright © 2022



Date: 9/20/2024

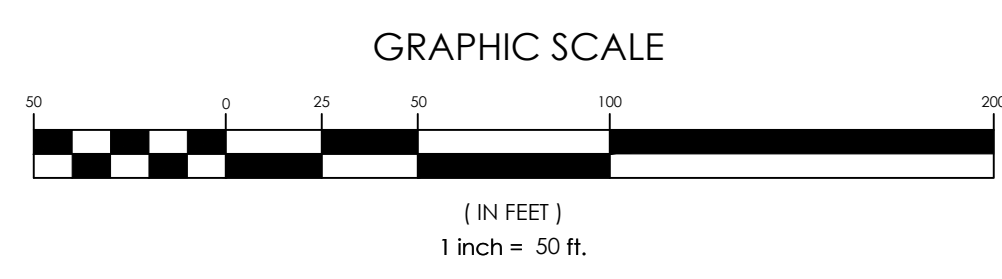
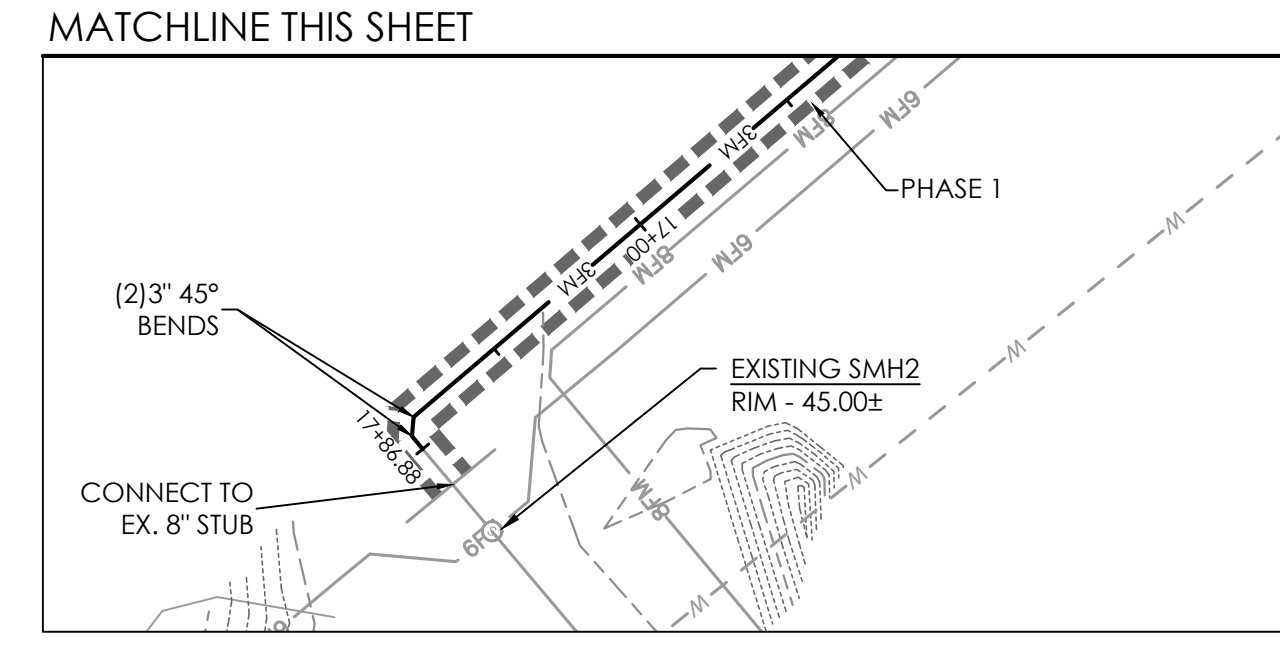
NO.	DATE	DESCRIPTION
1	6/20/2024	ADDRESSED SCE, SCD, & TUI COMMENTS
2	7/25/2024	ADDRESSED TUI WATER COMMENTS
3	7/31/2024	REVISE SEWER FORCEMAIN RAIL CROSSING
4	8/6/2024	REVISE SEWER FORCEMAIN RAIL CROSSING
5	8/26/2024	ADDRESSED TUI WATER COMMENTS
6	9/20/2024	UPDATED TUI WATER DETAILS

for
LEEWARD CHASE
SUSSEX COUNTY, DELAWARE
Prepared for: Wakefield Development, LLC

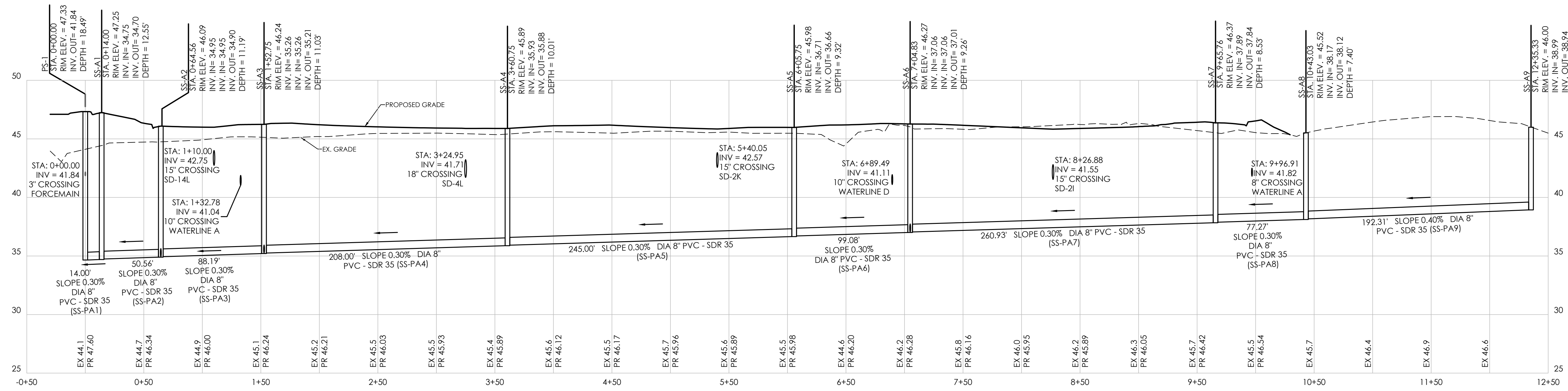
Date:	4/12/23
Job Number:	G21074
Scale:	1"=50'
Drawn By:	EDT
Designed By:	JPR
Approved By:	JRE

Sheet No.: **20**
File Name: G21074-Sewer

NOTES:
1. LATERALS FOR LOTS 41-44 SHALL BE DUCTILE IRON.
SEE DETAIL SHEET 24.



MATCHLINE THIS SHEET

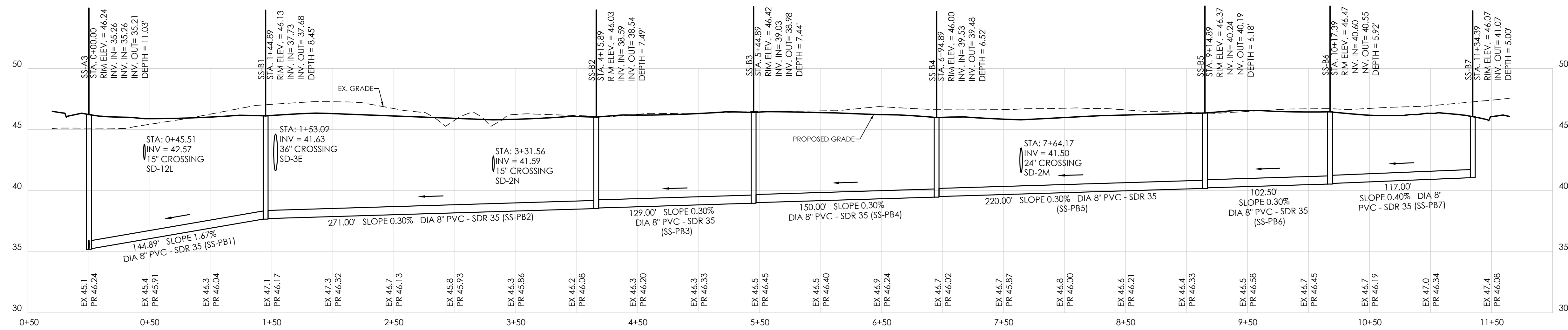


PS-1 TO SS-A9

HORIZONTAL: 1"=50'
VERTICAL: 1"=5'

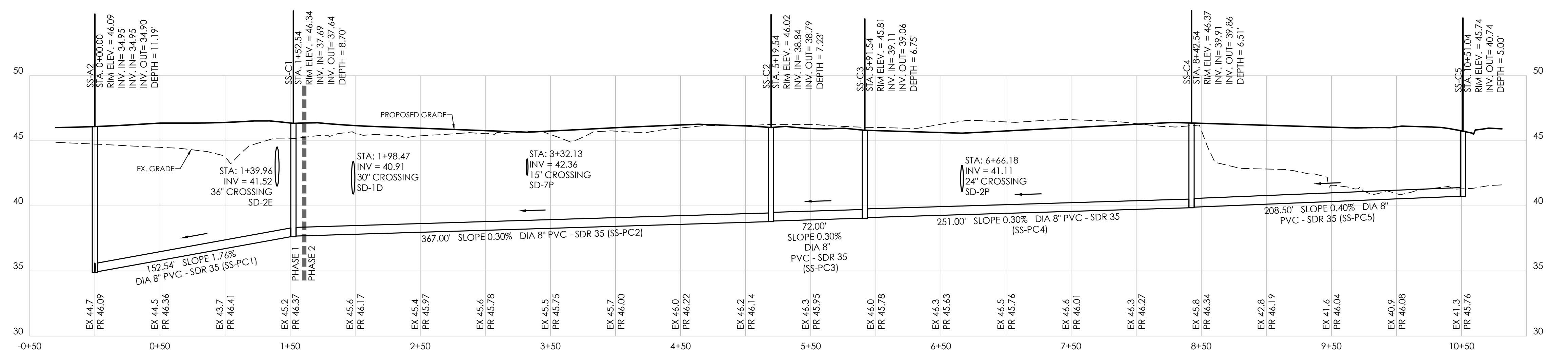
NOTES:

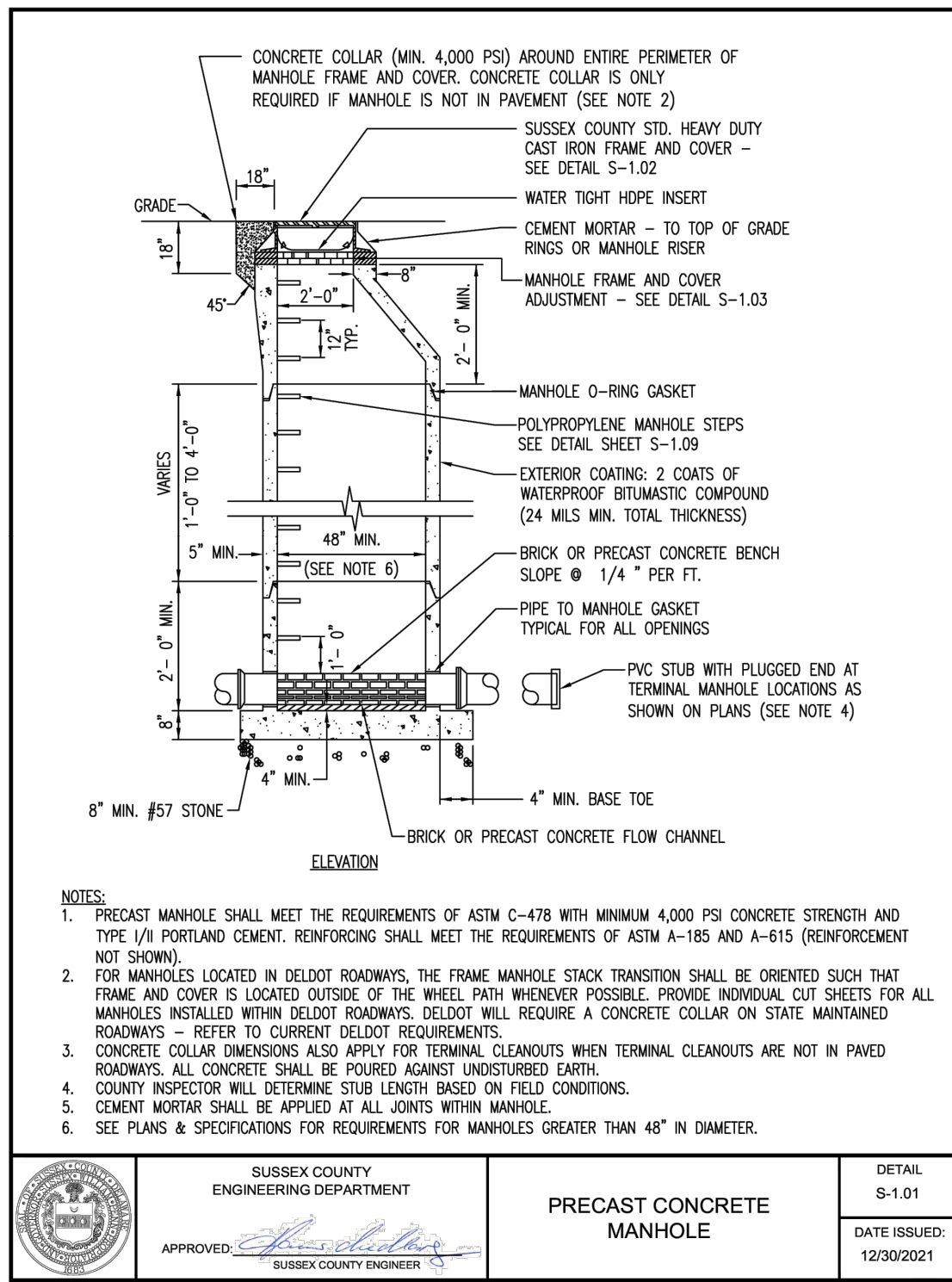
1. THE SANITARY SEWER SHALL CONFORM TO THE SUSSEX COUNTY STANDARDS AND SPECIFICATIONS FOR SEWER DETAILS.
2. ALL GRAVITY-FED SANITARY SEWER PIPES WITH A DEPTH LESS THAN 12" SHALL BE SDR-35. ALL GRAVITY-FED SANITARY SEWER PIPES WITH A DEPTH GREATER THAN 12" SHALL BE SDR-26.
3. ALL FITTINGS FOR GRAVITY-FED SANITARY SEWER PIPES SHALL BE SDR-26.
4. SEWERS CROSSING WATER MAINS SHALL BE LAID OUT TO PROVIDE A MINIMUM VERTICAL DISTANCE OF 18" BETWEEN THE OUTSIDE OF THE WATER MAIN AND THE OUTSIDE OF THE SEWER. THE CROSSING SHALL BE ARRANGED SO THE SEWER JOINTS WILL BE EQUIDISTANT, AND AS FAR AS POSSIBLE FROM THE WATER MAIN JOINTS. CONCRETE ENCASEMENT SHALL BE REQUIRED WHEN IT IS IMPOSSIBLE TO OBTAIN PROPER SEPARATION.



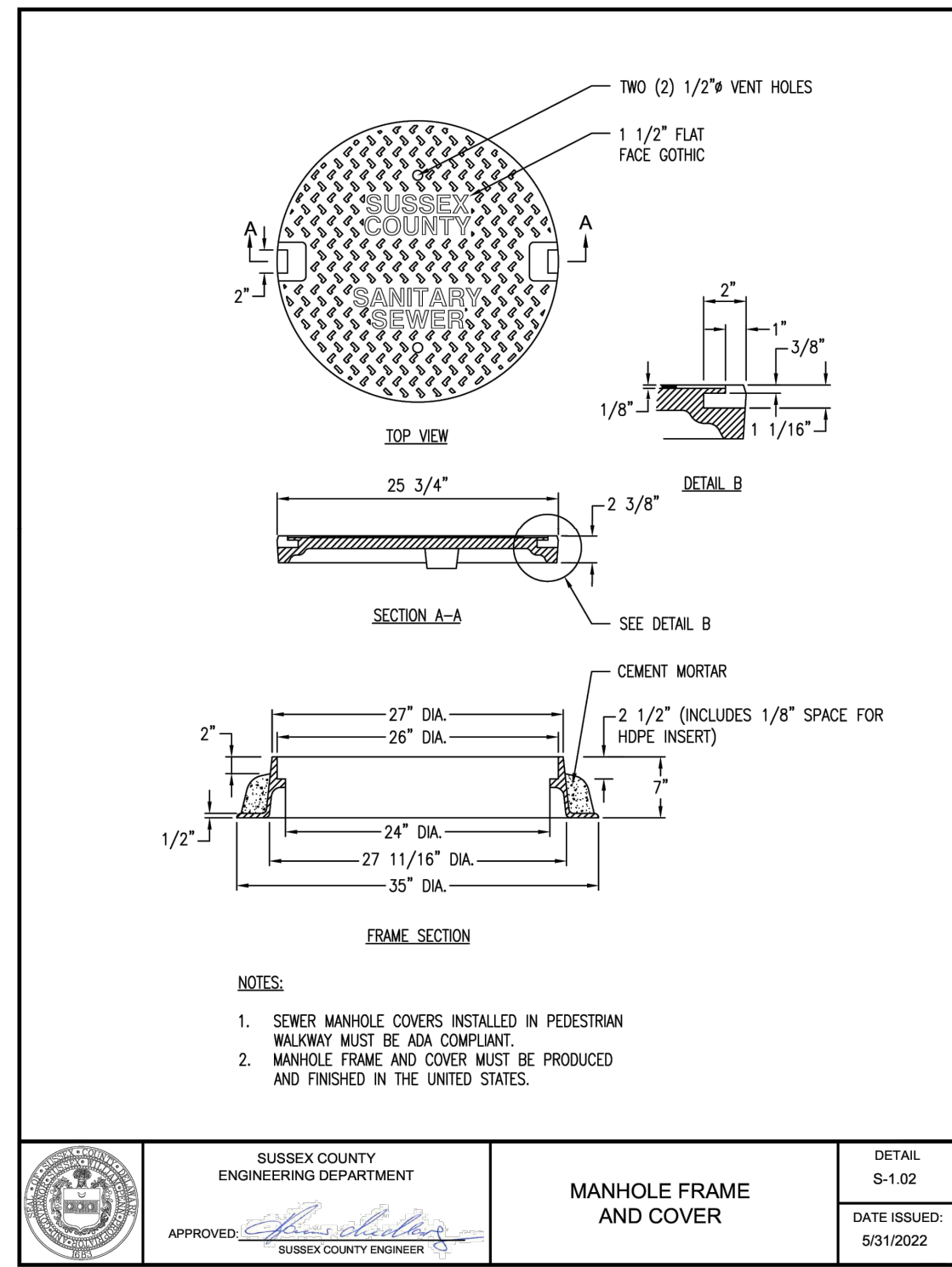
SS-A3 TO SS-B7

HORIZONTAL: 1"=50'
VERTICAL: 1"=5'

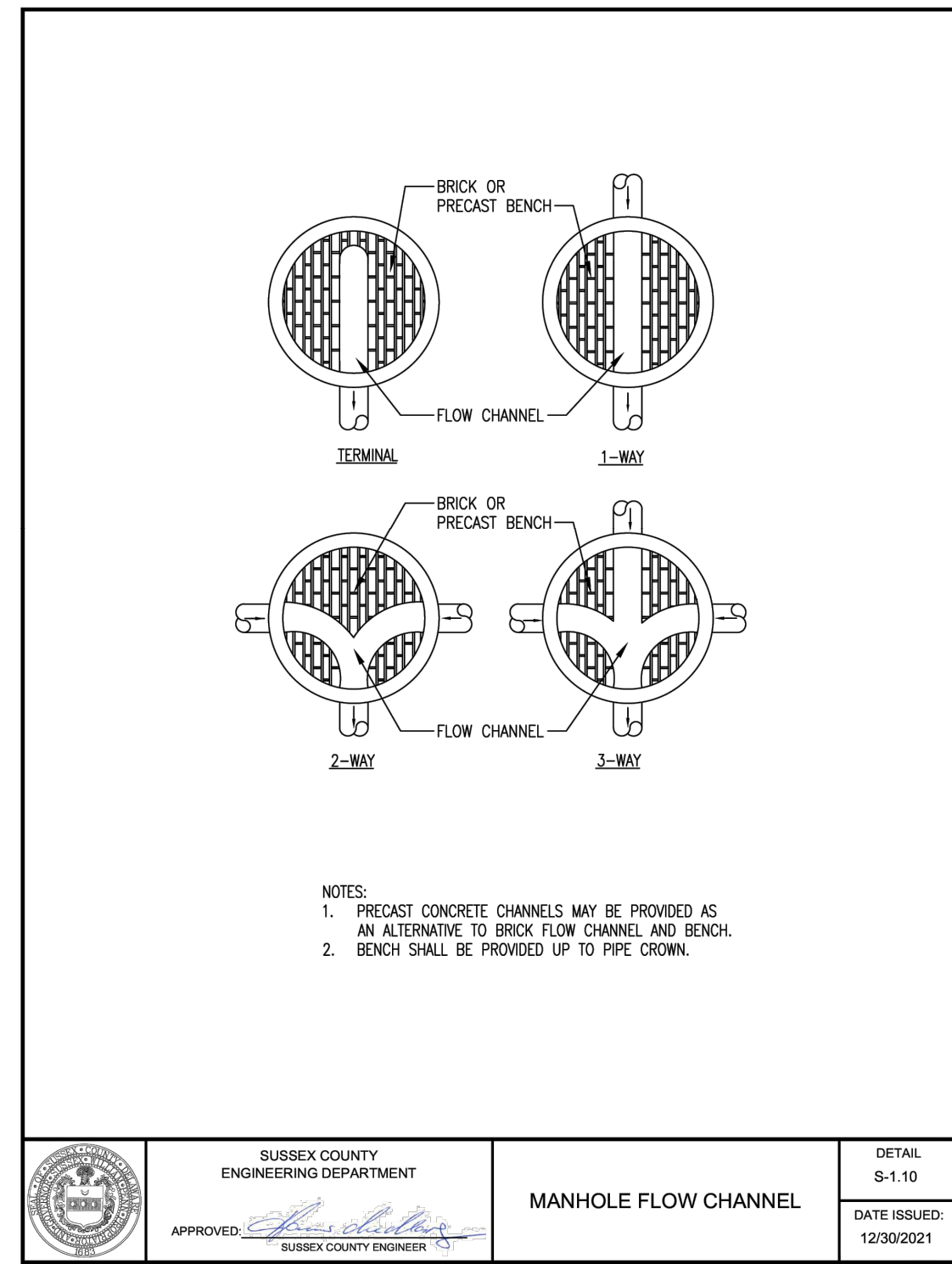




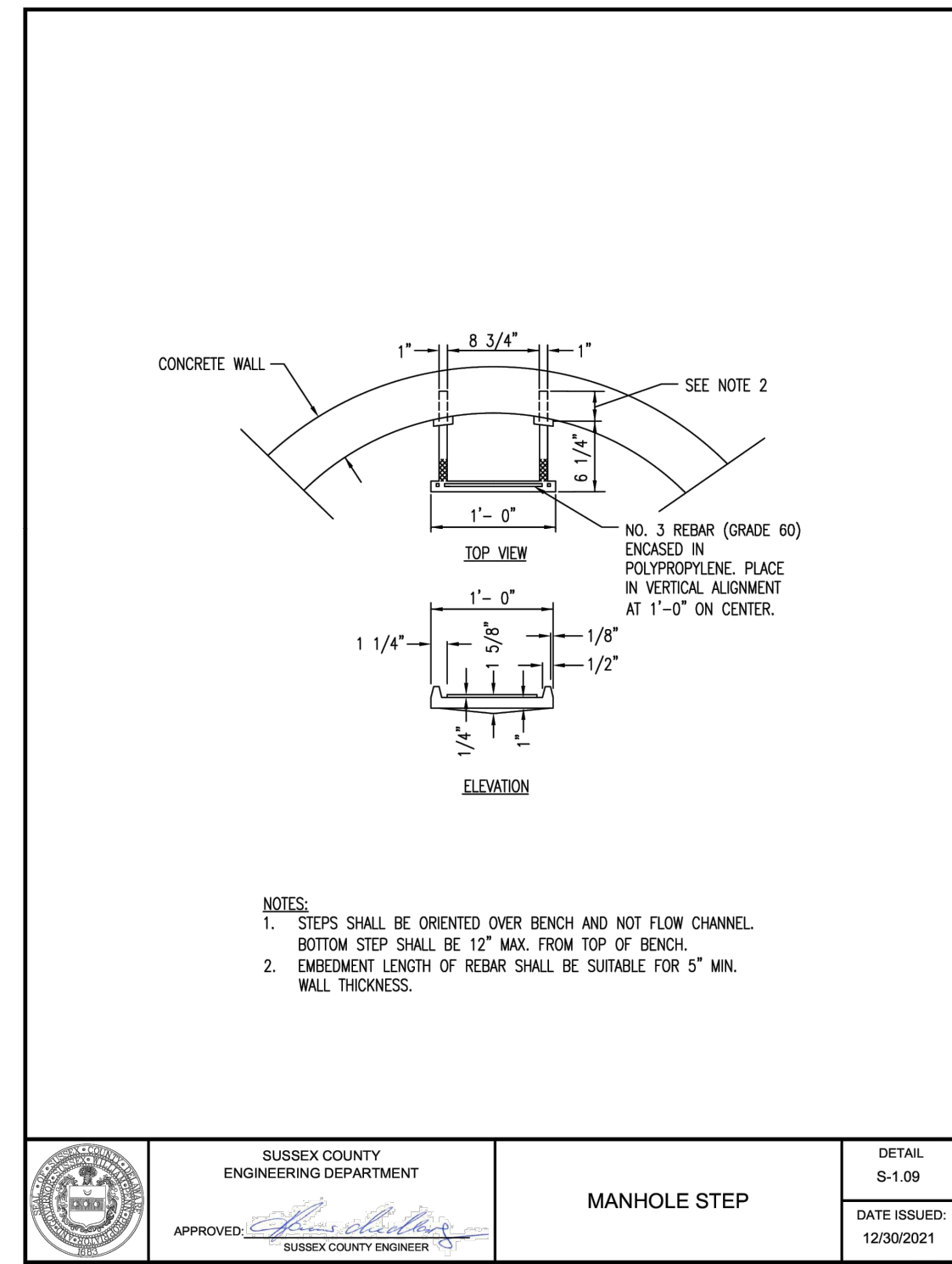
	SUSSEX COUNTY ENGINEERING DEPARTMENT	PRECAST CONCRETE MANHOLE	DETAIL S-1.01
	APPROVED: <i>[Signature]</i> SUSSEX COUNTY ENGINEER		DATE ISSUED: 12/30/2021



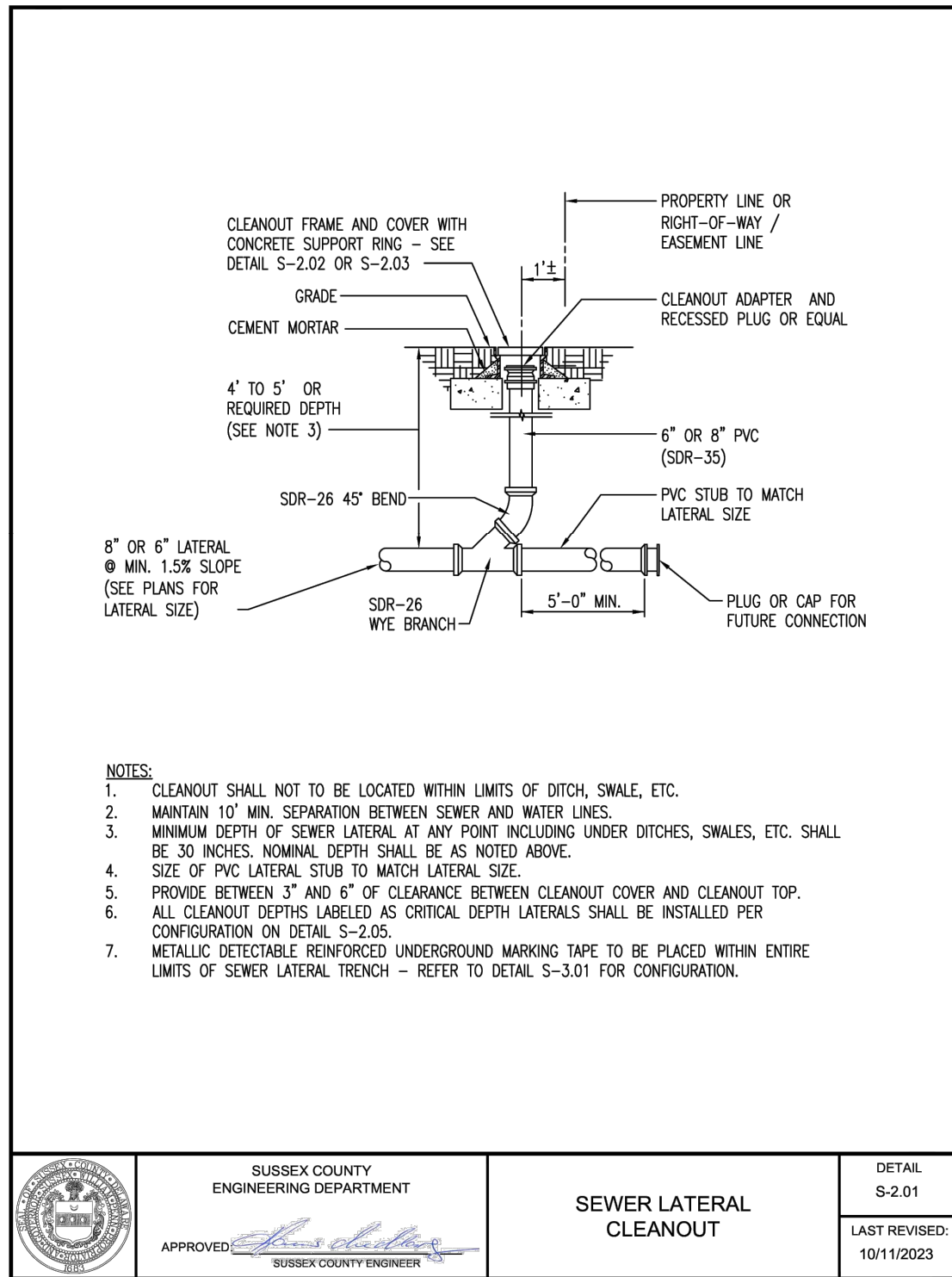
	SUSSEX COUNTY ENGINEERING DEPARTMENT	MANHOLE FRAME AND COVER	DETAIL S-1.02
	APPROVED: <i>[Signature]</i> SUSSEX COUNTY ENGINEER		DATE ISSUED: 5/31/2022



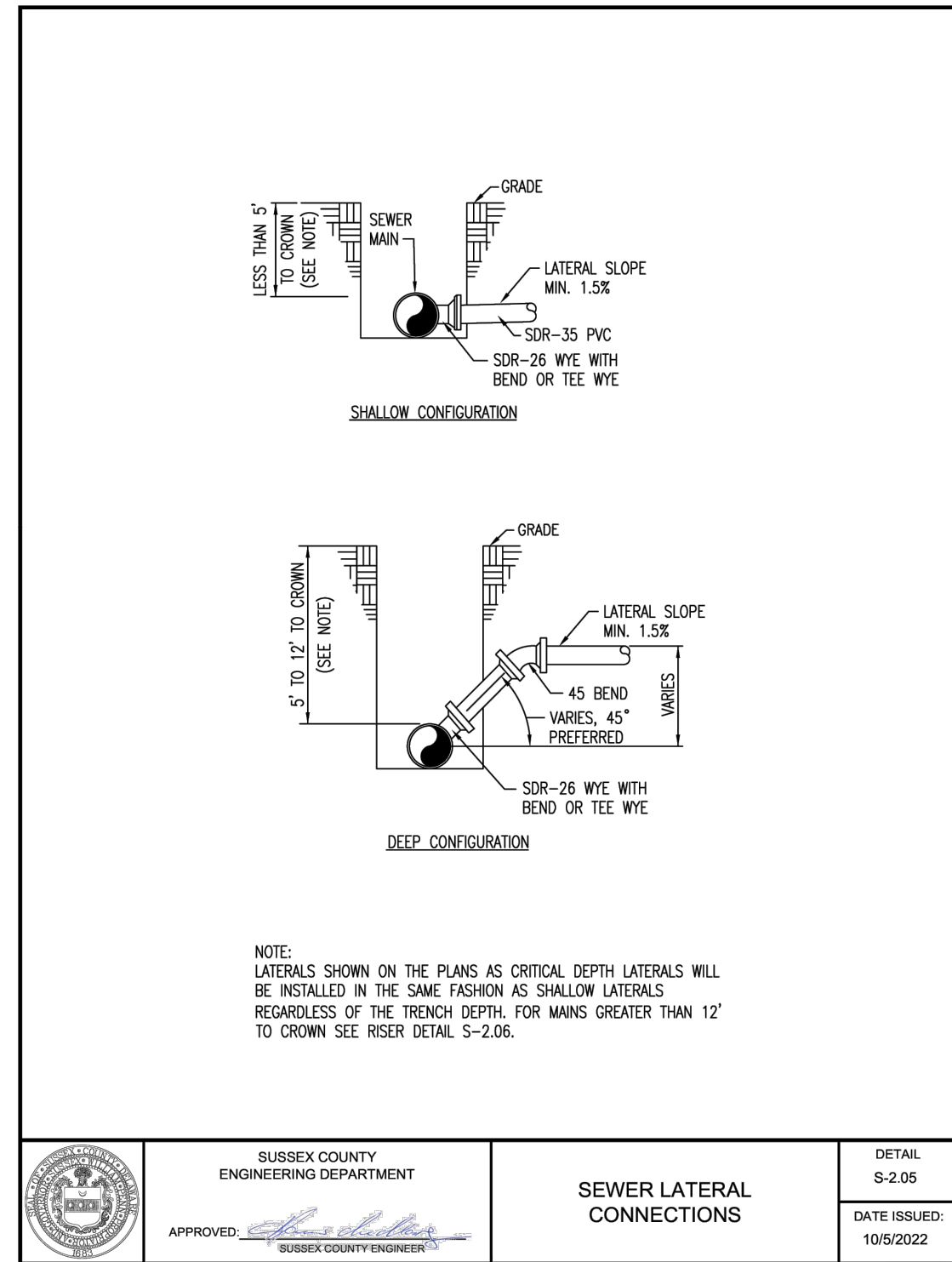
	SUSSEX COUNTY ENGINEERING DEPARTMENT	MANHOLE FLOW CHANNEL	DETAIL S-1.10
	APPROVED: <i>[Signature]</i> SUSSEX COUNTY ENGINEER		DATE ISSUED: 12/30/2021



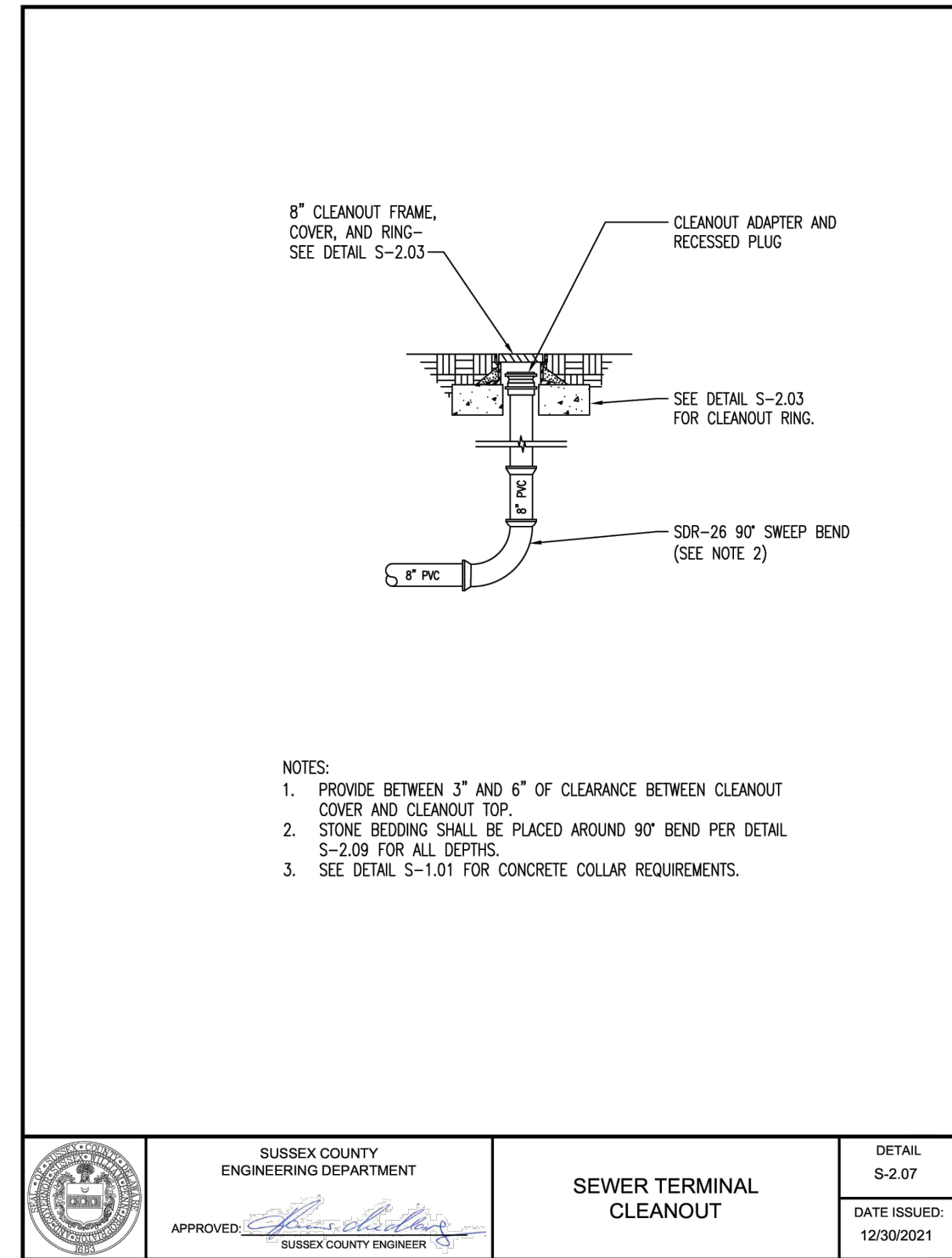
	SUSSEX COUNTY ENGINEERING DEPARTMENT	MANHOLE STEP	DETAIL S-1.09
	APPROVED: <i>[Signature]</i> SUSSEX COUNTY ENGINEER		DATE ISSUED: 12/30/2021



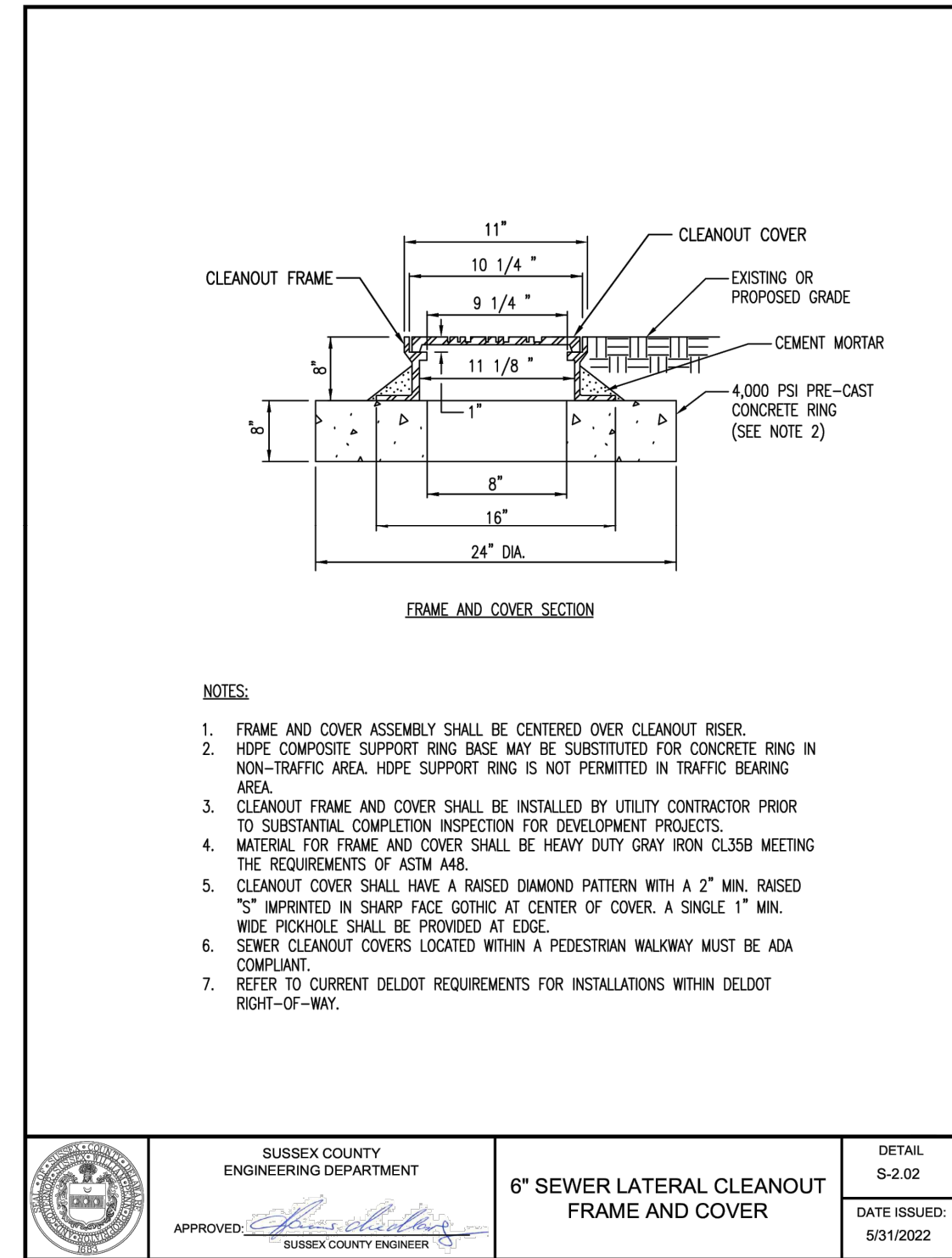
	SUSSEX COUNTY ENGINEERING DEPARTMENT	SEWER LATERAL CLEANOUT	DETAIL S-2.01
	APPROVED: <i>[Signature]</i> SUSSEX COUNTY ENGINEER		DATE ISSUED: 10/11/2023



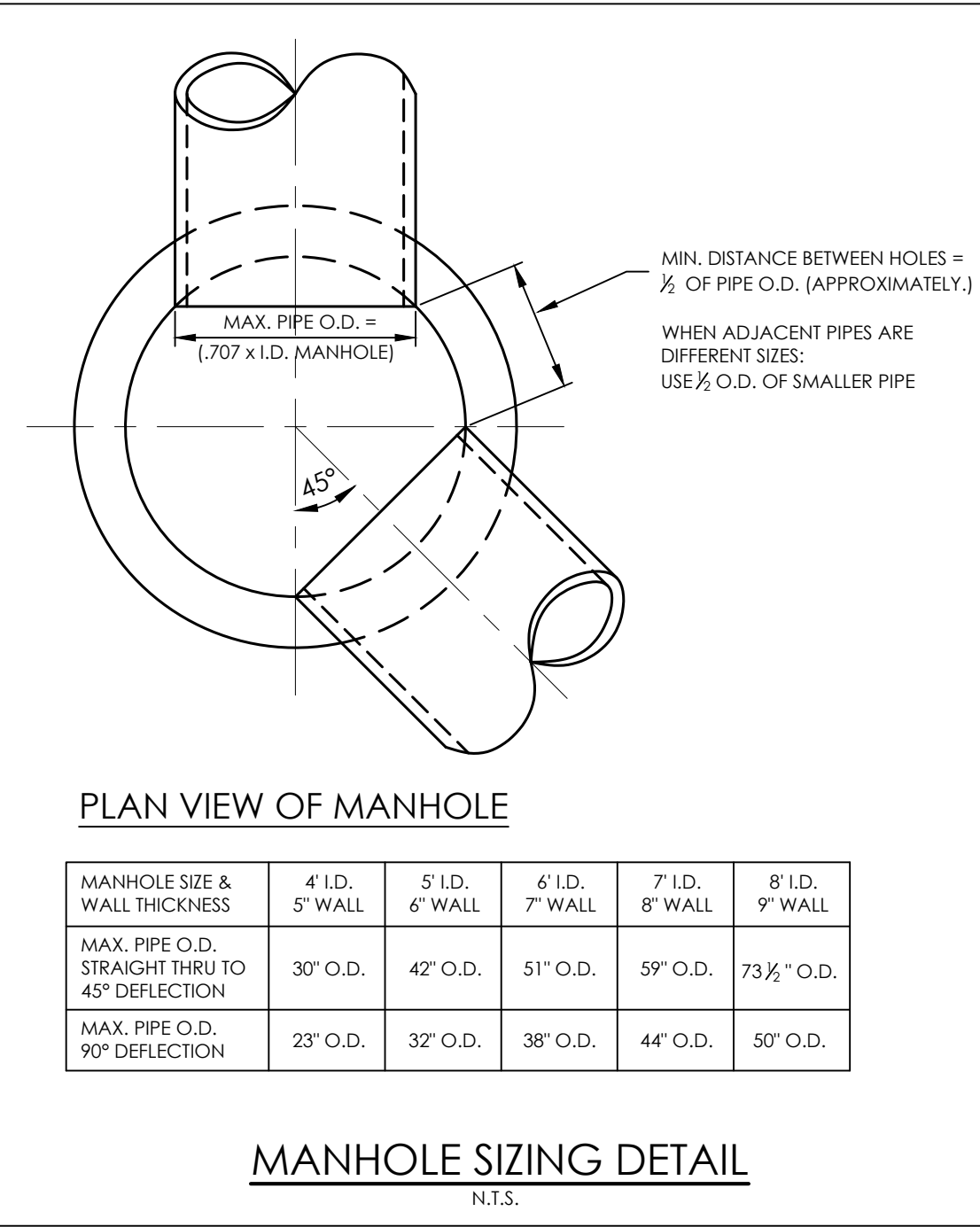
	SUSSEX COUNTY ENGINEERING DEPARTMENT	SEWER LATERAL CONNECTIONS	DETAIL S-2.05
	APPROVED: <i>[Signature]</i> SUSSEX COUNTY ENGINEER		DATE ISSUED: 10/5/2022



	SUSSEX COUNTY ENGINEERING DEPARTMENT	SEWER TERMINAL CLEANOUT	DETAIL S-2.07
	APPROVED: <i>[Signature]</i> SUSSEX COUNTY ENGINEER		DATE ISSUED: 12/30/2021



	SUSSEX COUNTY ENGINEERING DEPARTMENT	6\"/> 	DETAIL S-2.02
	APPROVED: <i>[Signature]</i> SUSSEX COUNTY ENGINEER		DATE ISSUED: 5/31/2022



303 North Bedford Street
Georgetown, DE 19947
T. 302-277-9215

3003 Marlett Hill Road
Salisbury, MD 21804
T. 410-572-8833

www.solutionsipem.com Copyright © 2022

Date: 9/20/2024

REVISIONS	
NO.	DESCRIPTION
1	ADDRESSED SCE, SCD, & TUI COMMENTS
2	ADDRESSED TUI WATER COMMENTS
3	REVISE SEWER FORCEMAIN RAIL CROSSING
4	REVISE SEWER FORCEMAIN RAIL CROSSING
5	ADDRESSED TUI WATER COMMENTS
6	UPDATED TUI WATER DETAILS

SANITARY SEWER DETAILS 1

for

LEEWARD CHASE

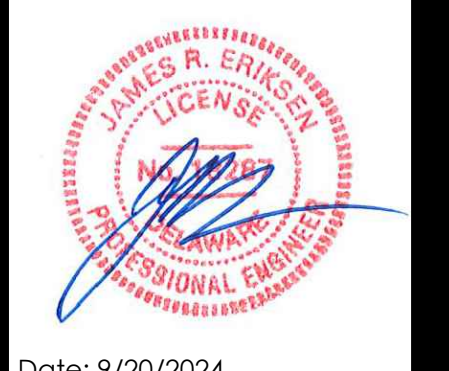
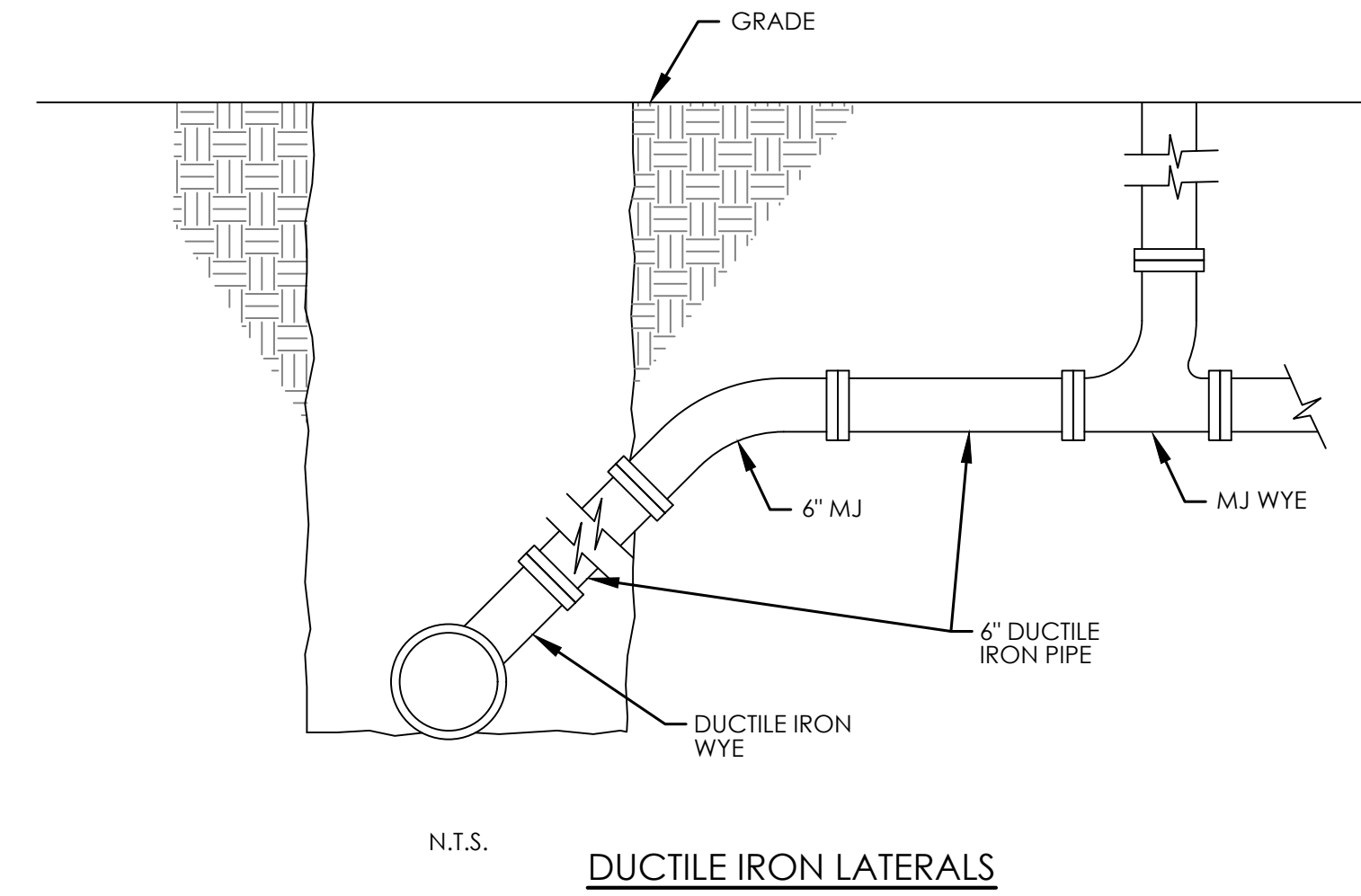
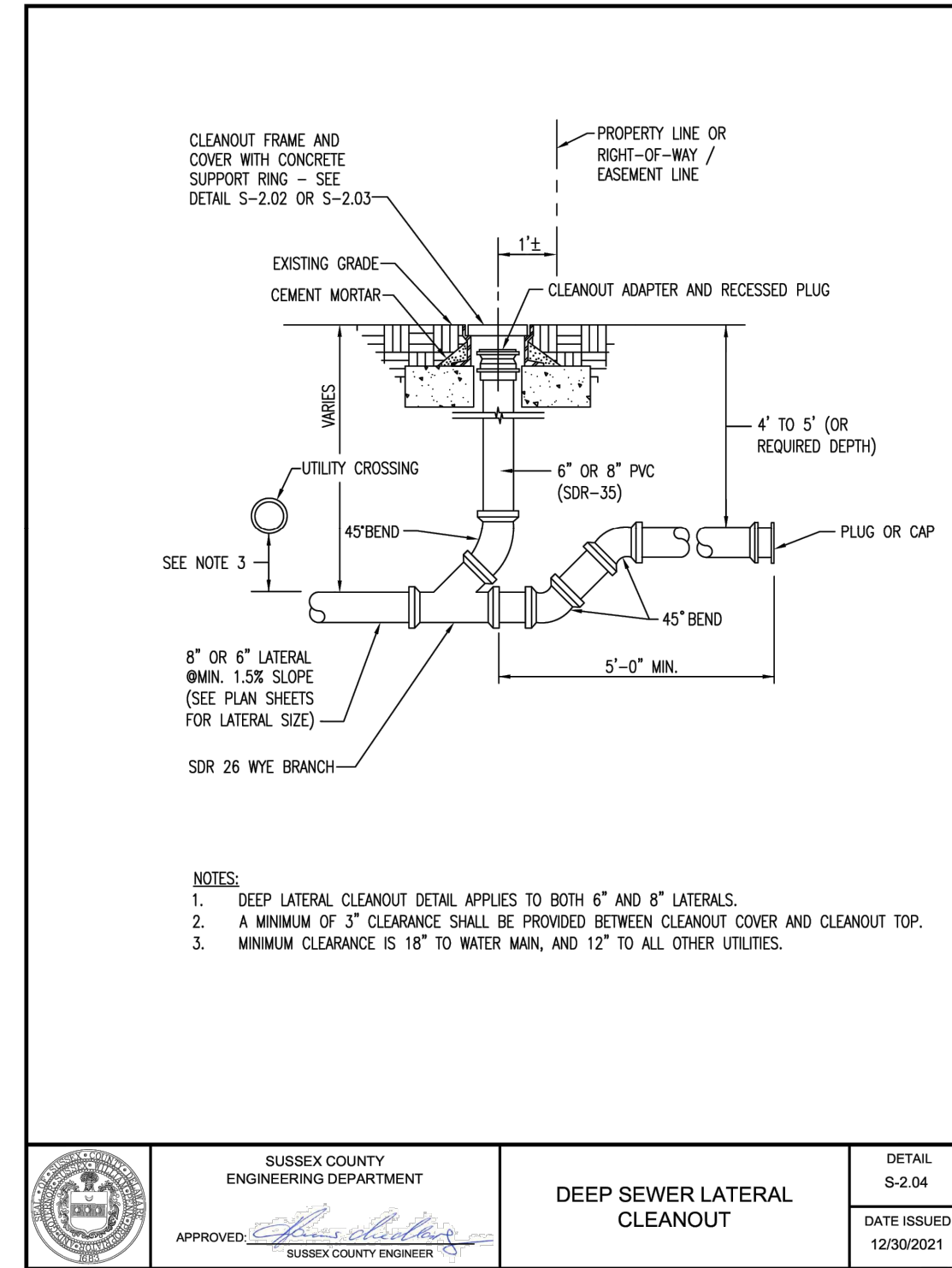
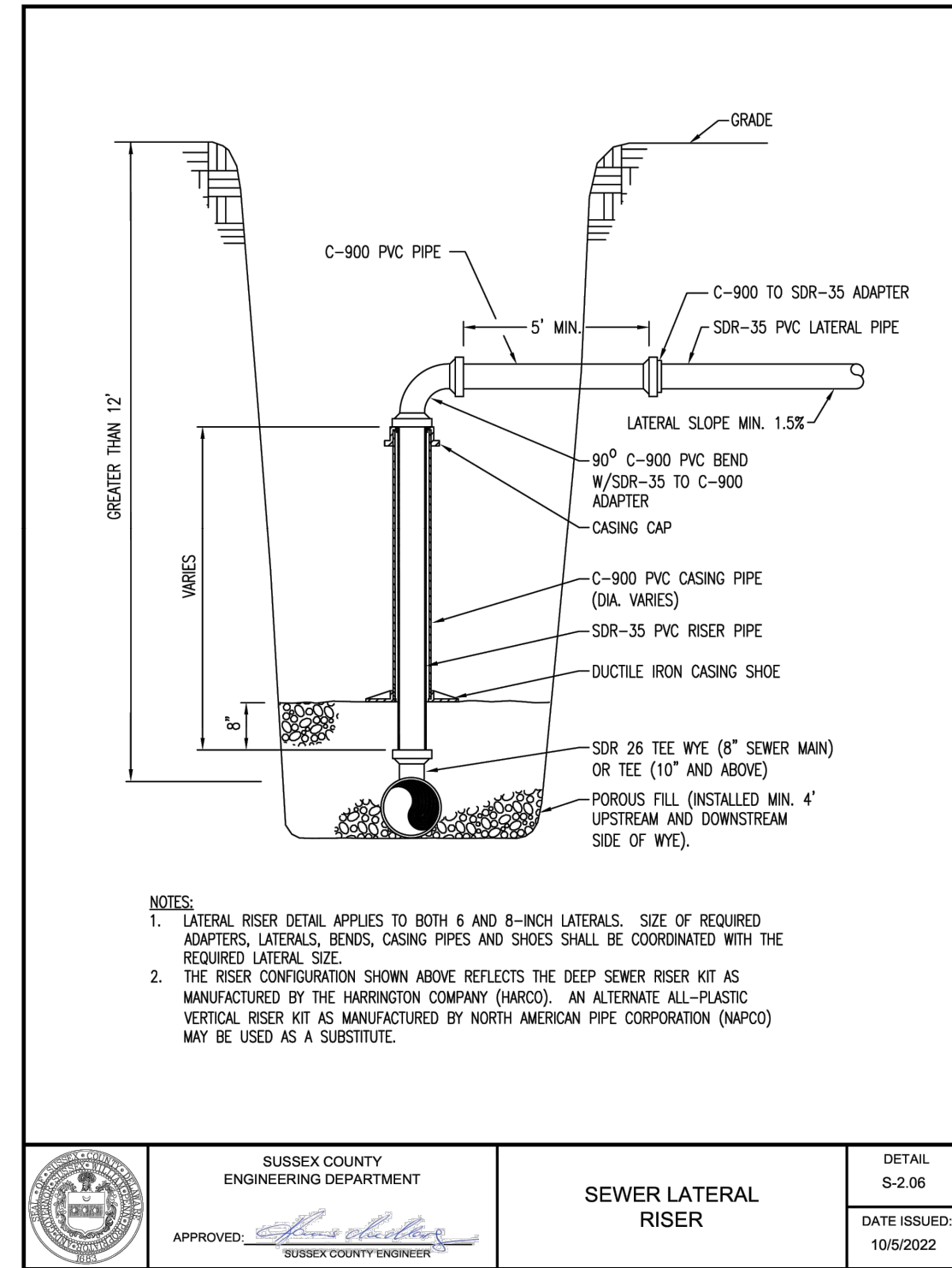
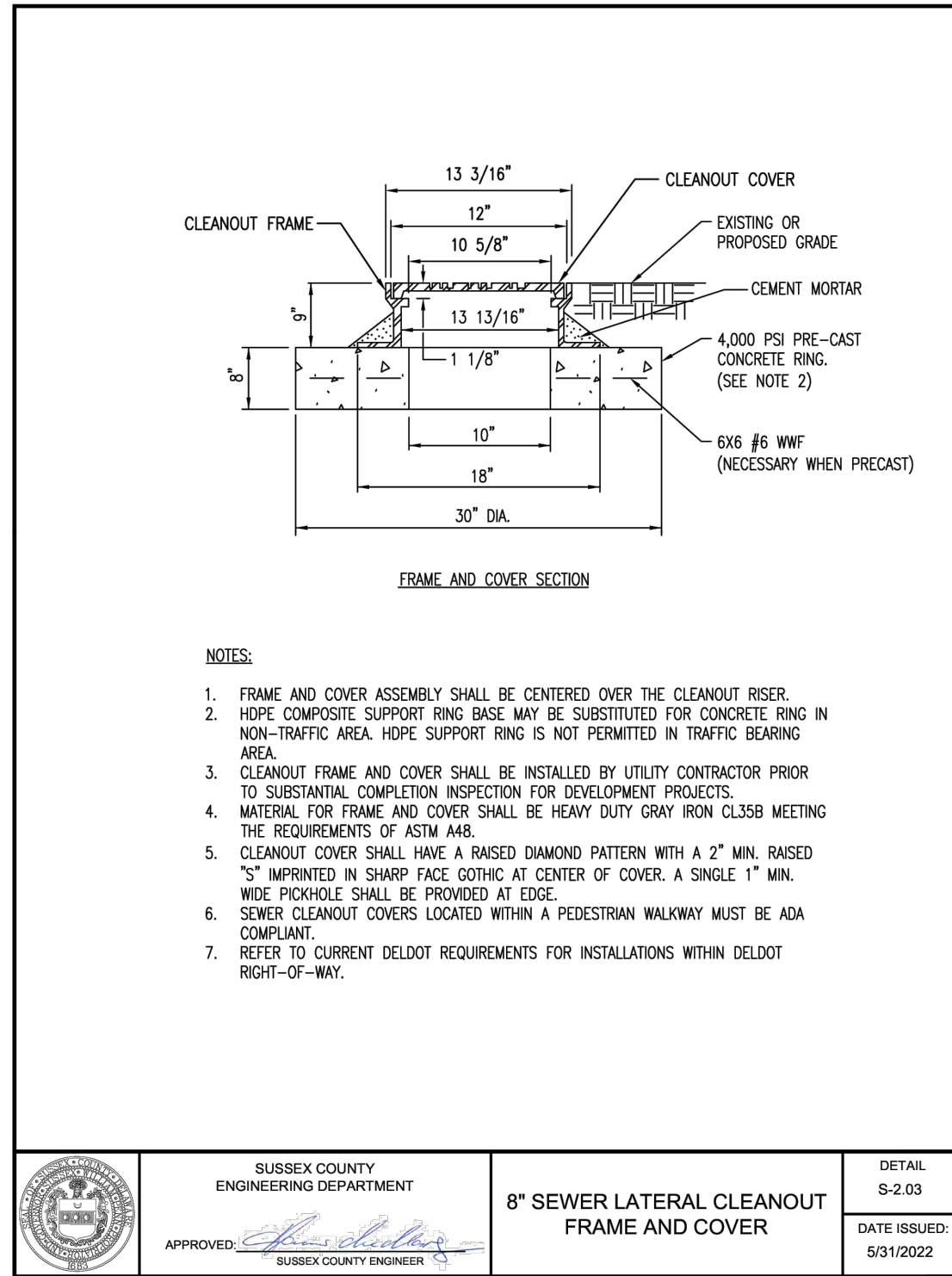
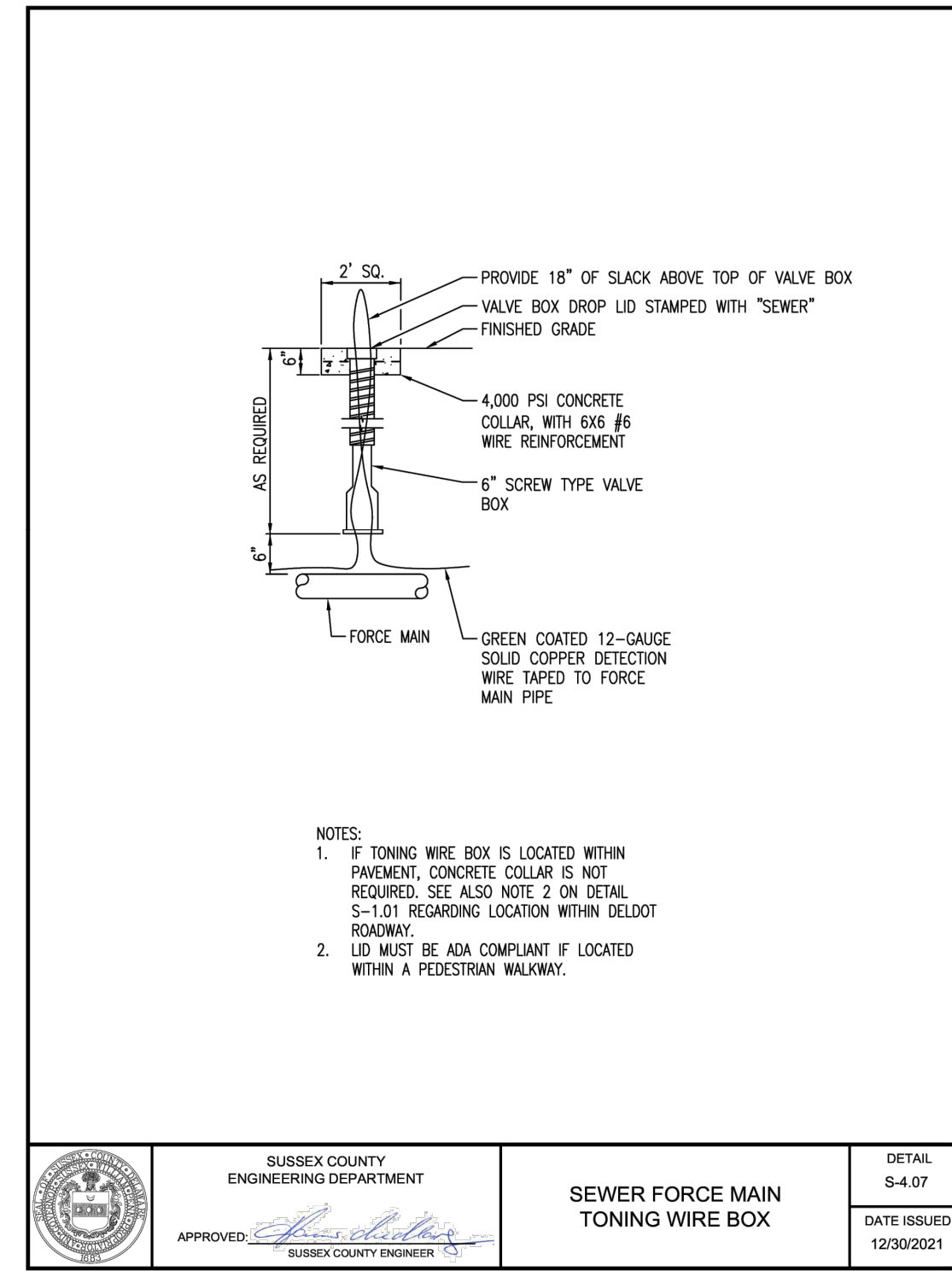
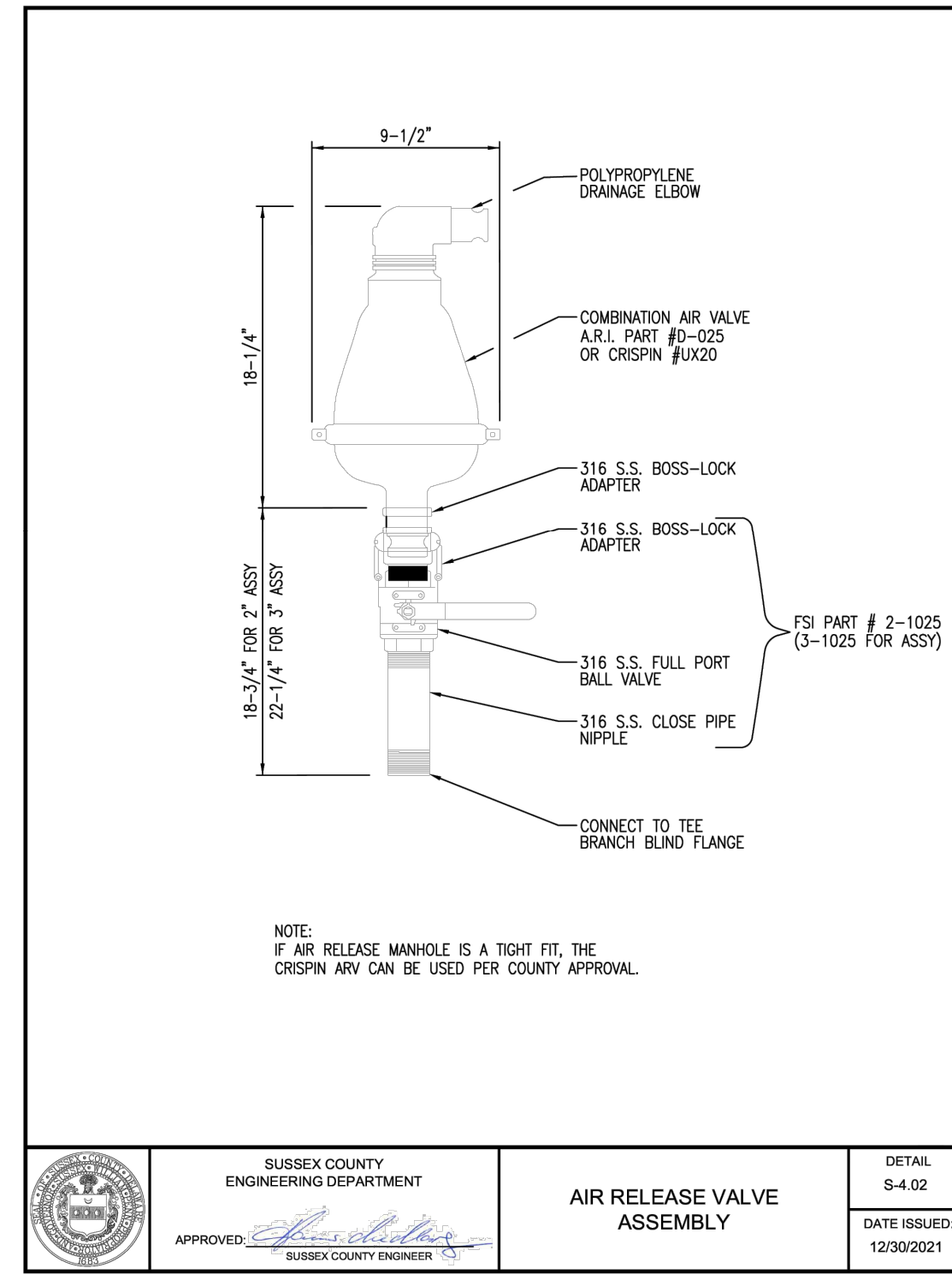
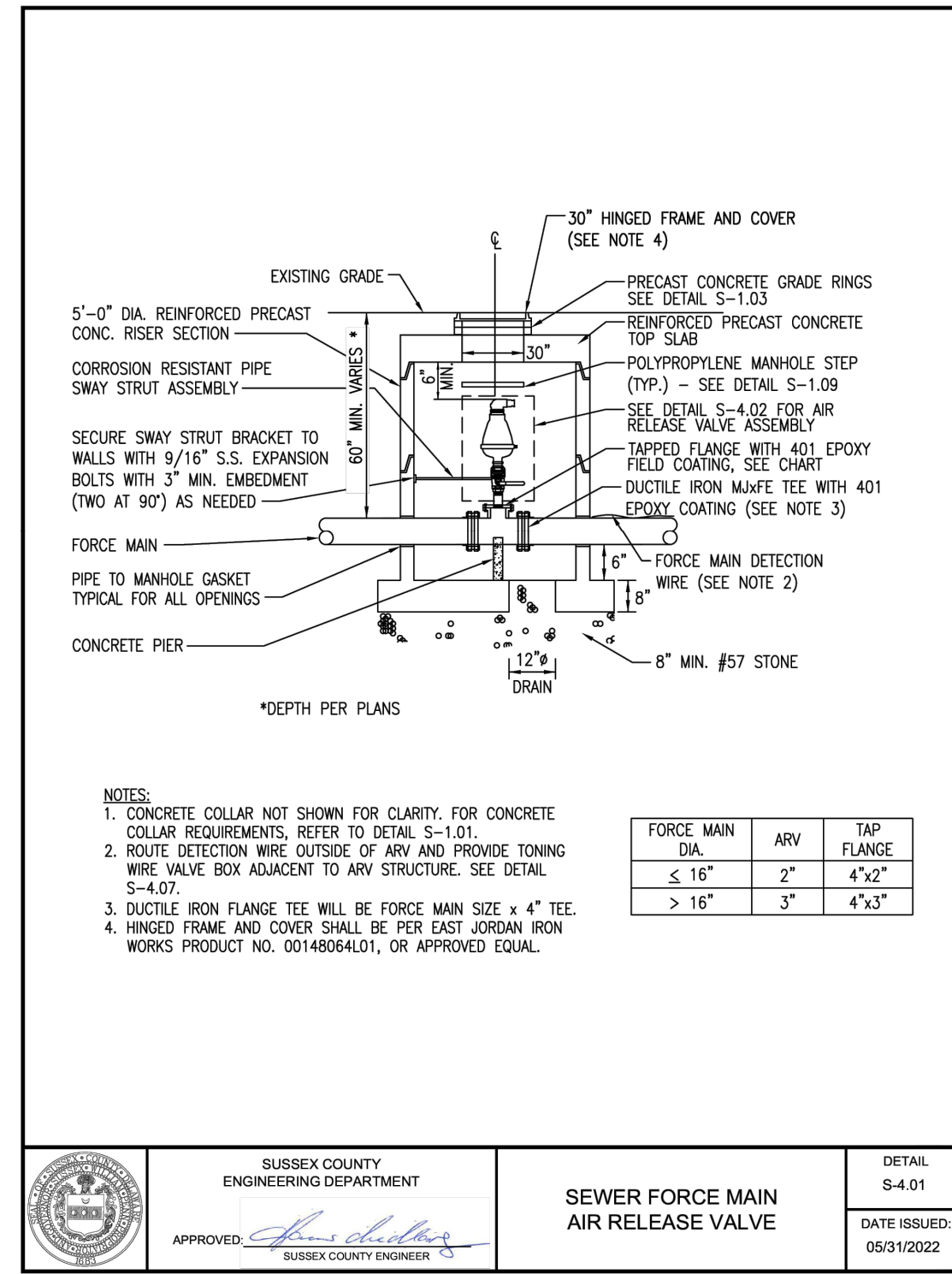
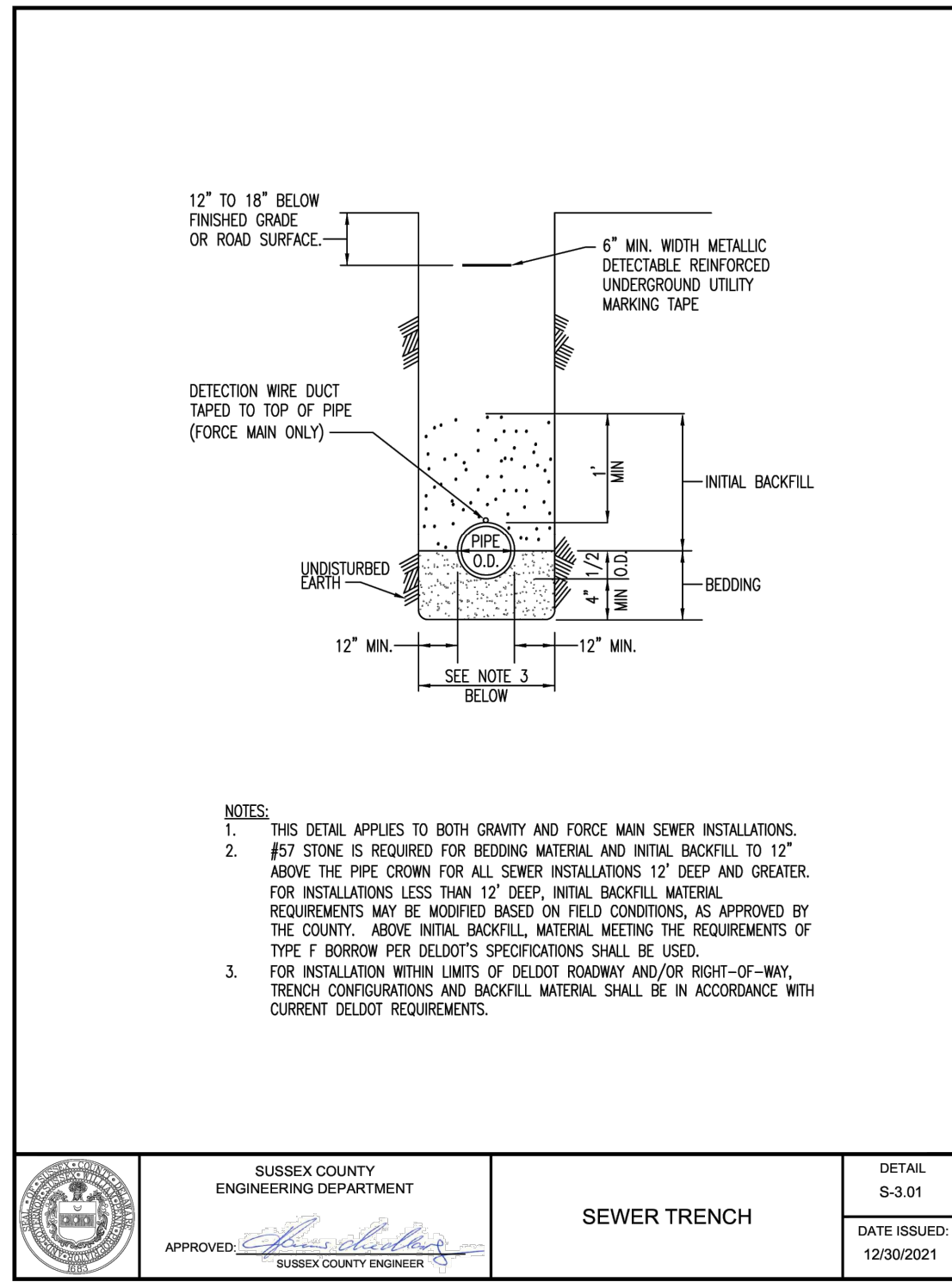
SUSSEX COUNTY, DELAWARE

Prepared for: Wakefield Development, LLC

Date:	4/12/23
Job Number:	G21074
Scale:	N.T.S.
Drawn By:	EDT
Designed By:	JPR
Approved By:	JRE

Sheet No.: 23

File Name: G21074-Sewer-Details



NO.	DATE	DESCRIPTION
1	6/20/2024	ADDRESSED SCE, SCD, & TUI COMMENTS
2	7/25/2024	ADDRESSED TUI WATER COMMENTS
3	7/31/2024	REVISE SEWER FORCE MAIN RAIL CROSSING
4	8/5/2024	REVISE SEWER FORCE MAIN RAIL CROSSING
5	8/26/2024	ADDRESSED TUI WATER COMMENTS
6	9/20/2024	UPDATED TUI WATER DETAILS

SANITARY SEWER DETAILS 2

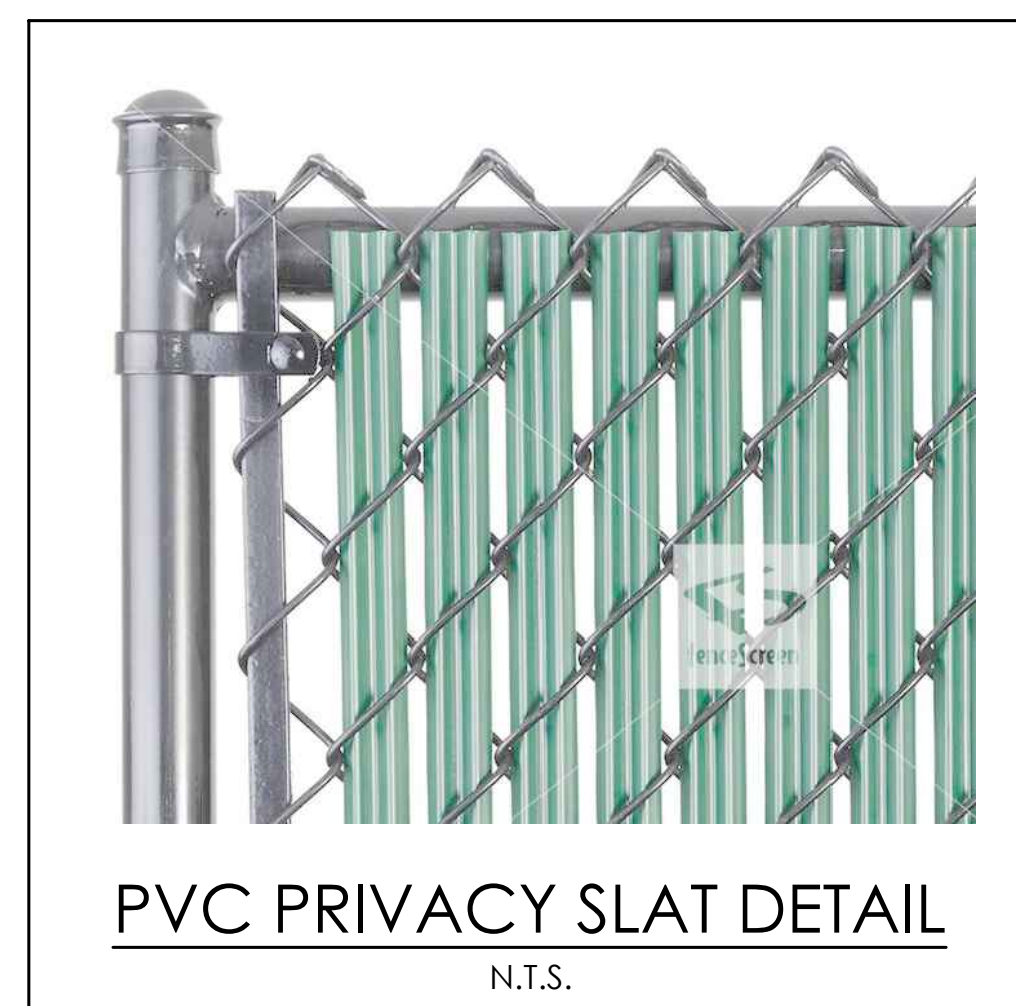
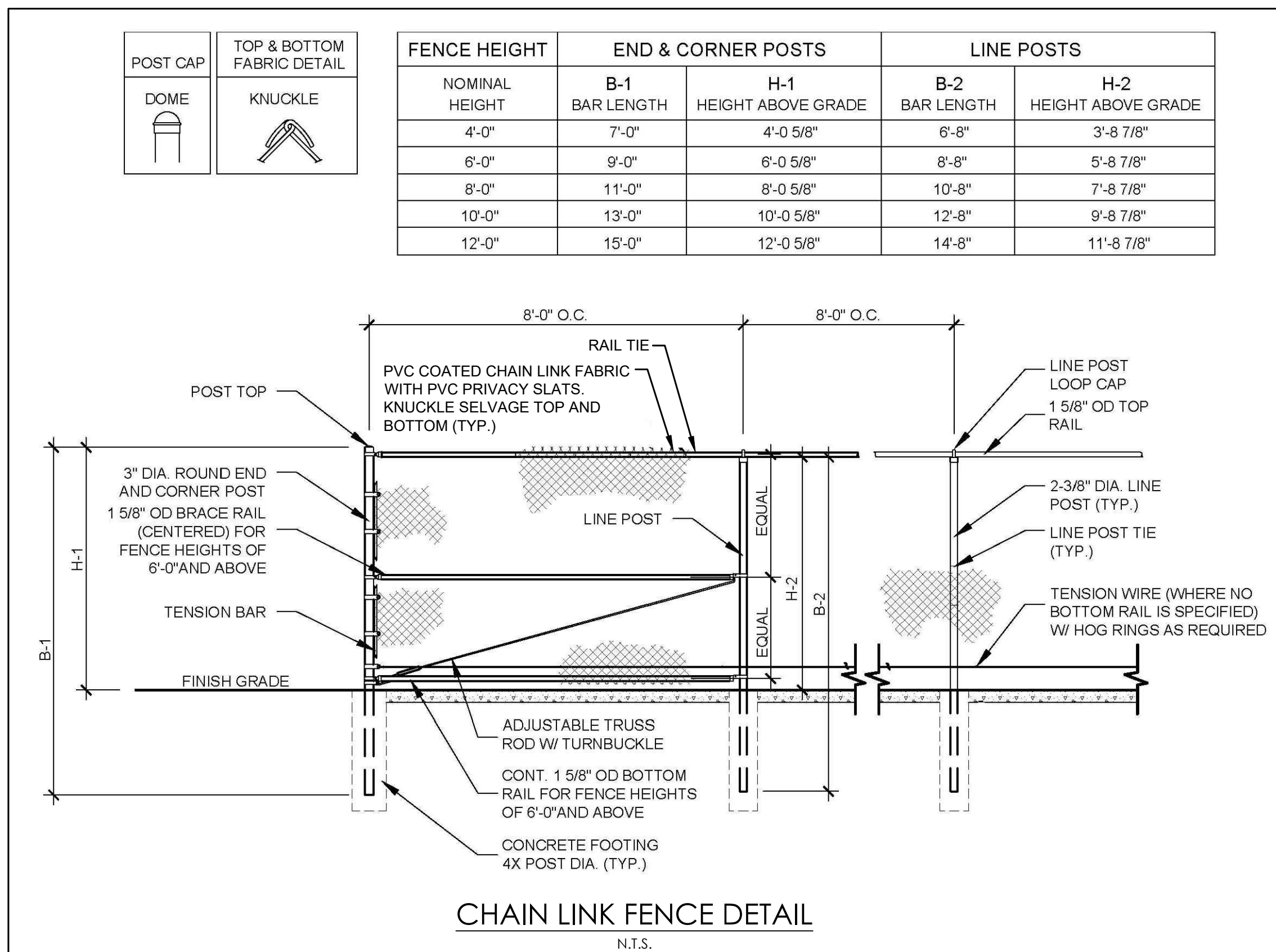
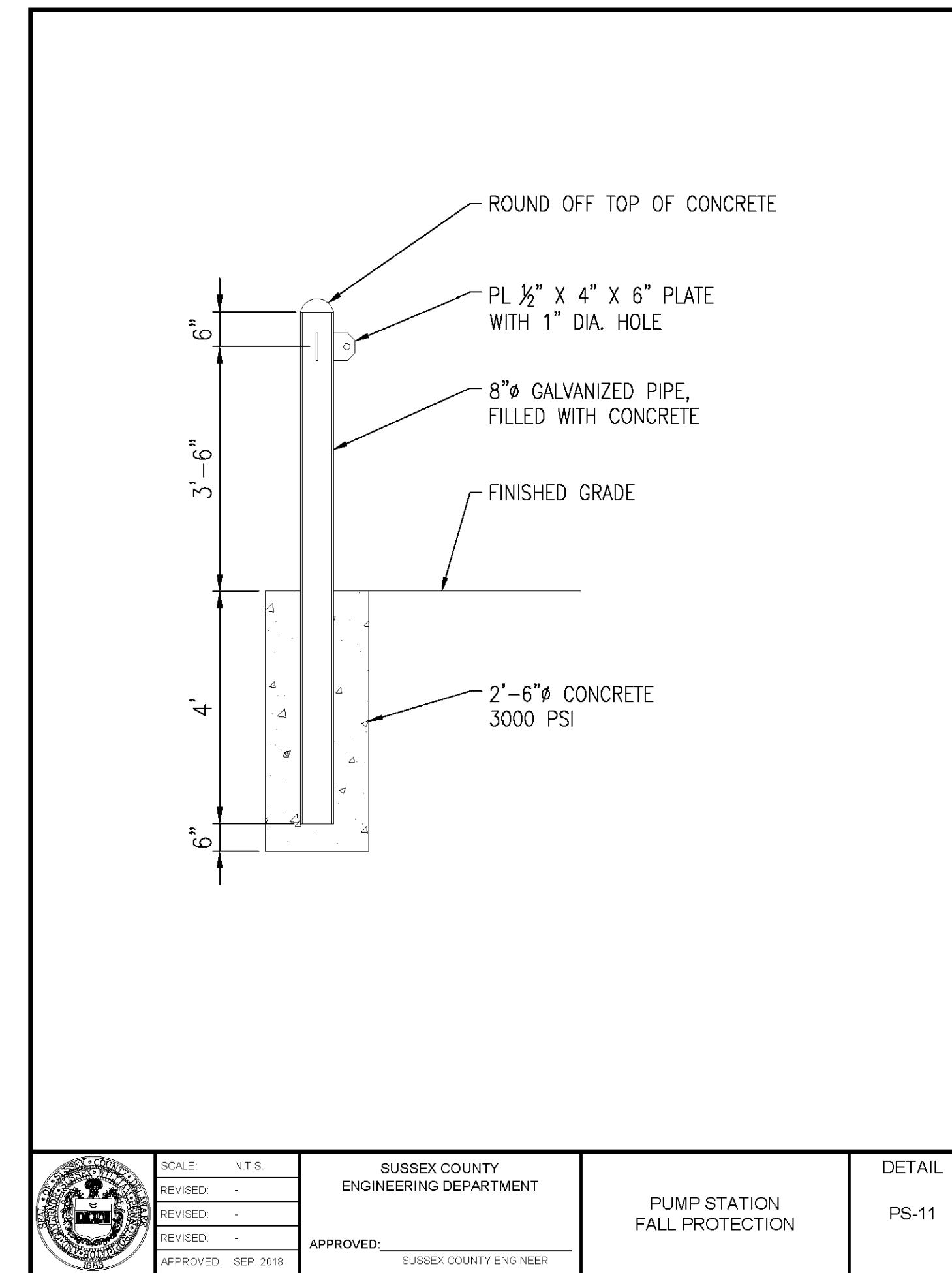
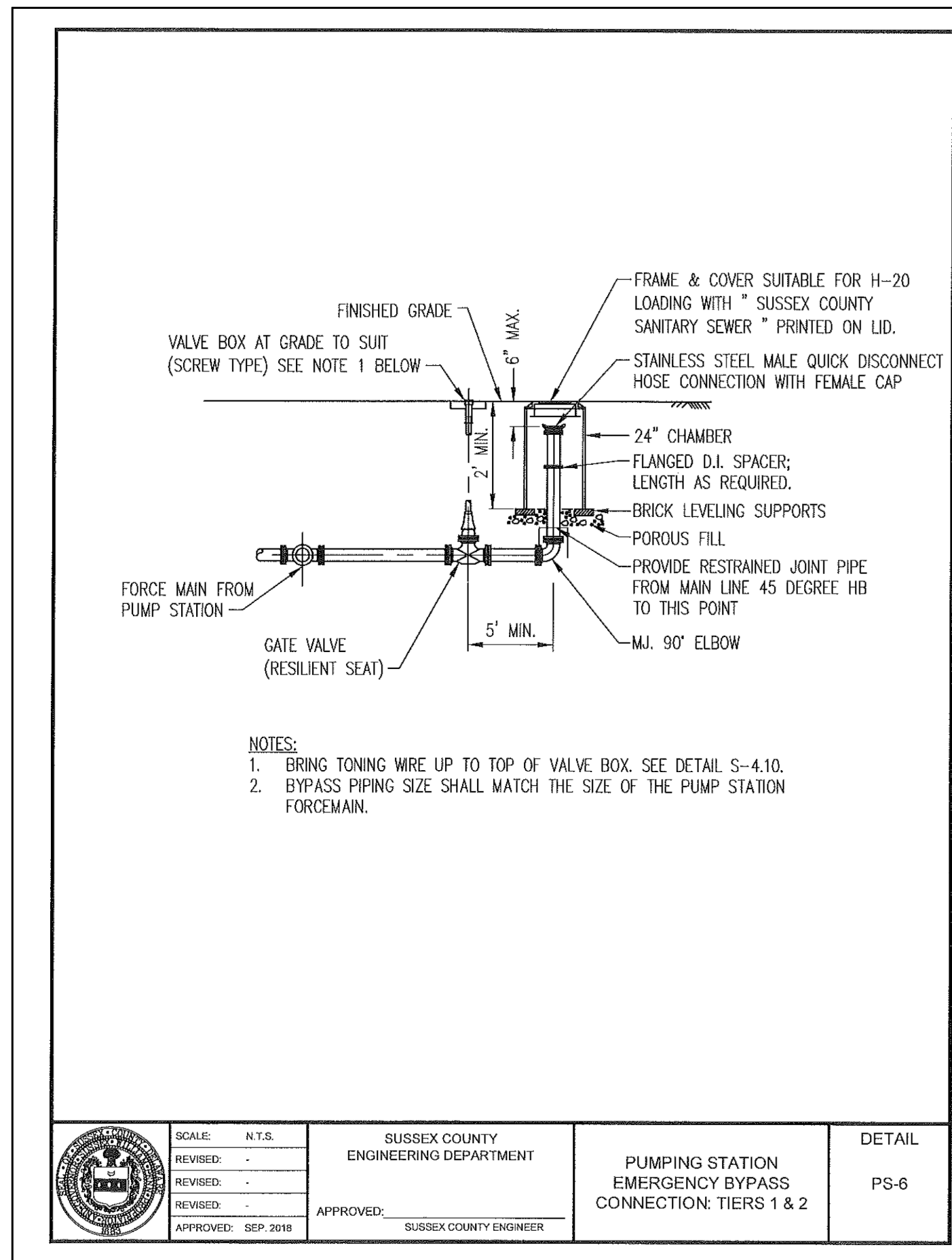
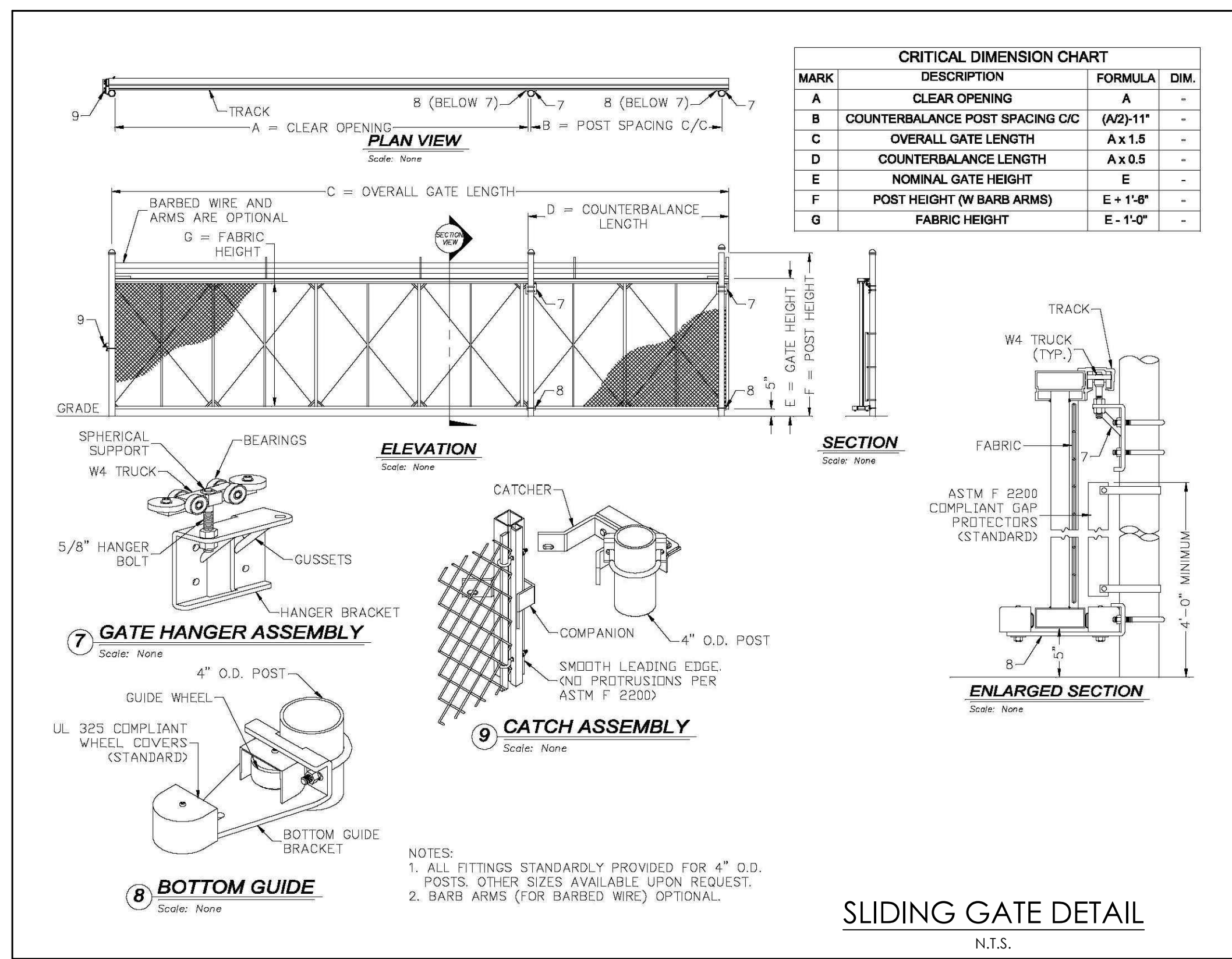
for

LEEWARD CHASE

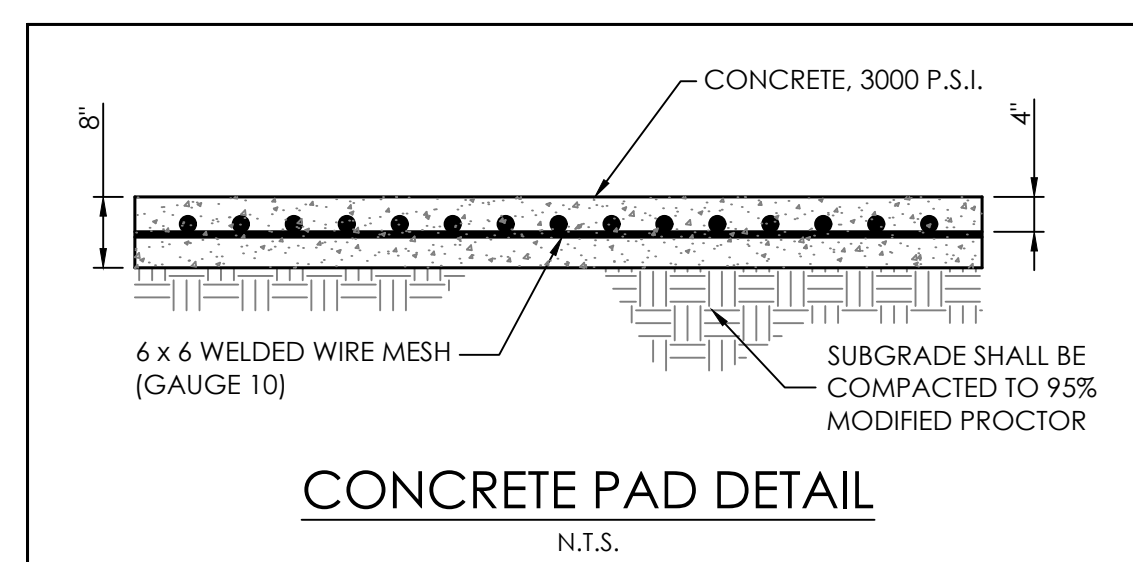
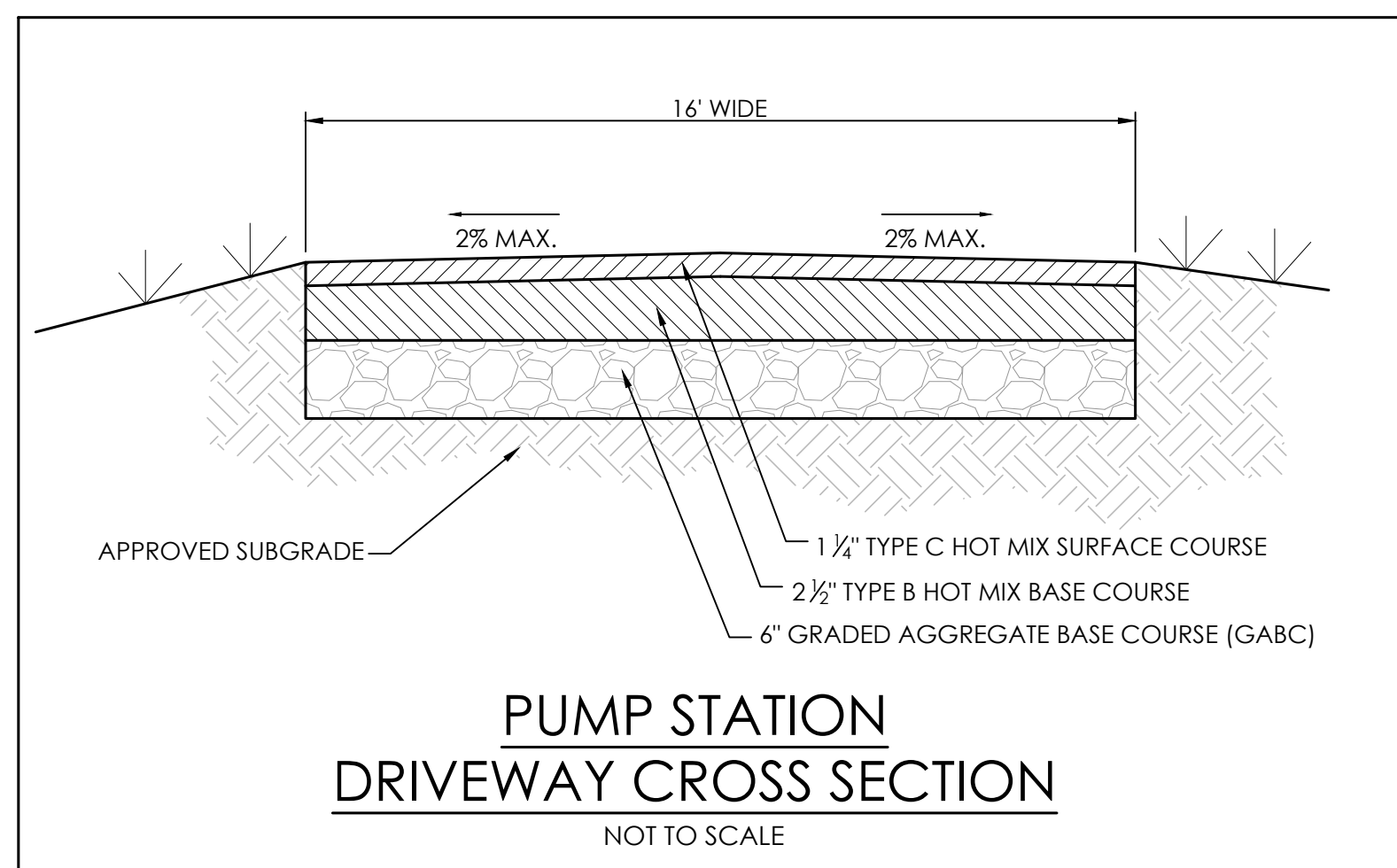
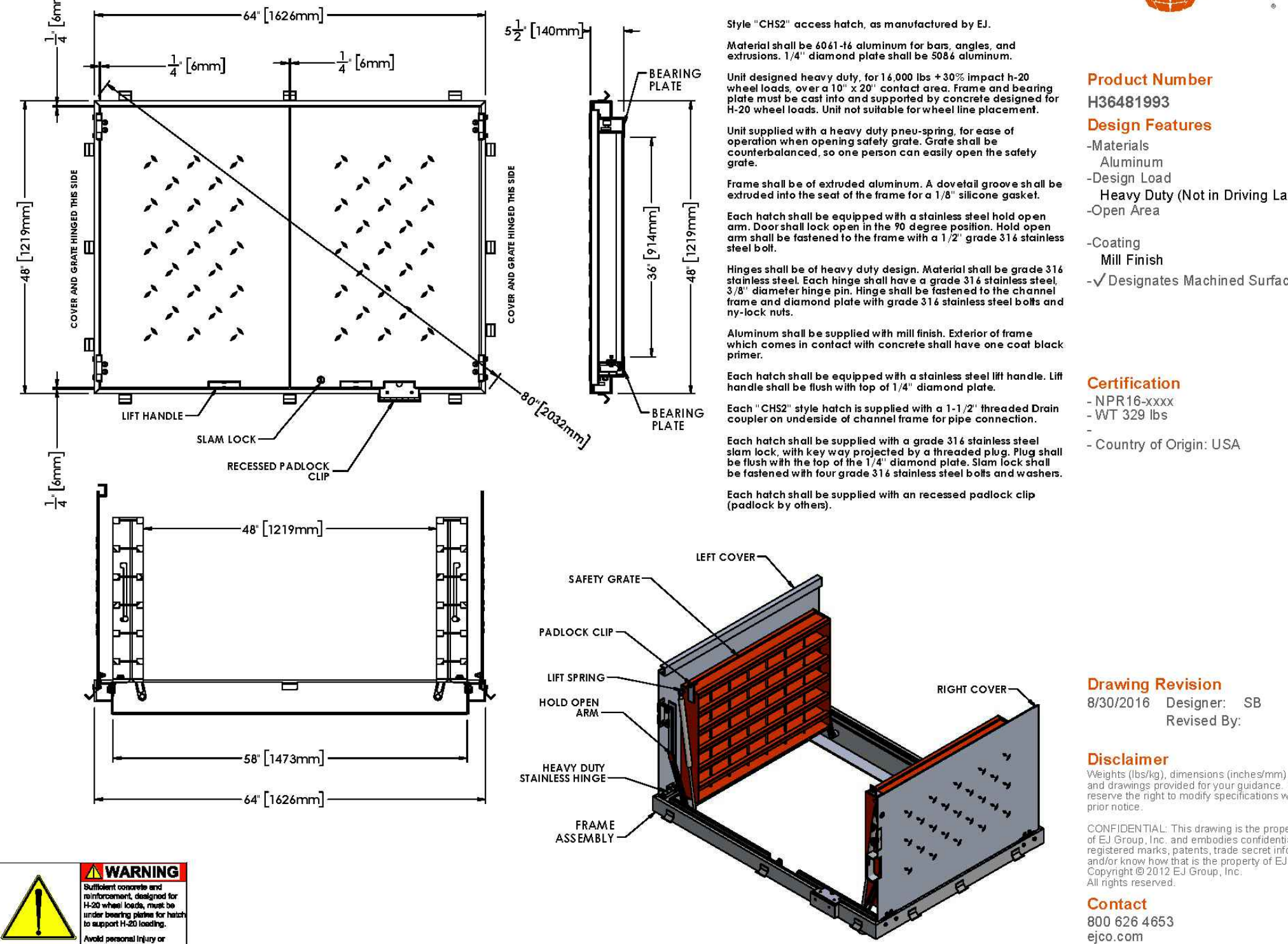
SUSSEX COUNTY, DELAWARE

Prepared for: Wakefield Development, LLC

Date:	4/12/23
Job Number:	G21074
Scale:	N.T.S.
Drawn By:	EDT
Designed By:	JPR
Approved By:	JRE



CHS2-Heavy Duty H-20 Rated SAFE HATCH



Date: 9/20/2024

NO.	DATE	DESCRIPTION
1	6/20/2024	ADDRESSED SCE, SCD, & TUI COMMENTS
2	7/25/2024	ADDRESSED TUI WATER COMMENTS
3	7/31/2024	REVISE SEWER FORCE MAIN RAIL CROSSING
4	8/5/2024	REVISE SEWER FORCE MAIN RAIL CROSSING
5	8/26/2024	ADDRESSED TUI WATER COMMENTS
6	9/20/2024	UPDATED TUI WATER DETAILS

PUMPSTATION DETAILS 2
 for
LEEWARD CHASE
 SUSSEX COUNTY, DELAWARE
 Prepared for: Wakefield Development, LLC

Date:	4/12/23
Job Number:	G21074
Scale:	AS NOTED
Drawn By:	JPR
Designed By:	JPR
Approved By:	JRE

Sheet No.: **27**
 File Name: G21074-Pumpstation