

7	PS1706A	ELECTRICAL DETAILS
8	PS1707	ELECTRICAL NOTES

E-one guidelines	
Design flow 3500/4/60	14.6 gpm

PER SYSTEM CURVE
E-ONE PUMP DUTY POINT 13.9 GPM

DETAIL - PUMP STATION SITE PLAN

SCALE: 1" = 5'

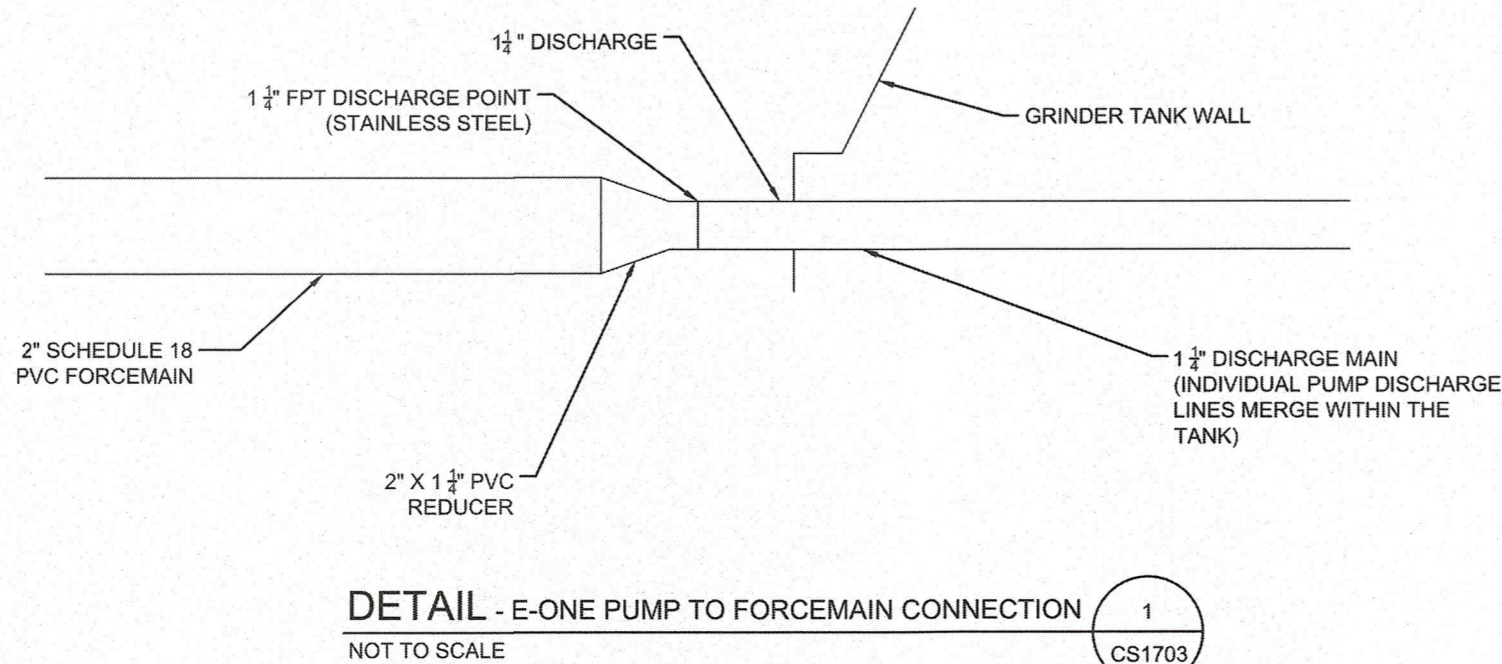
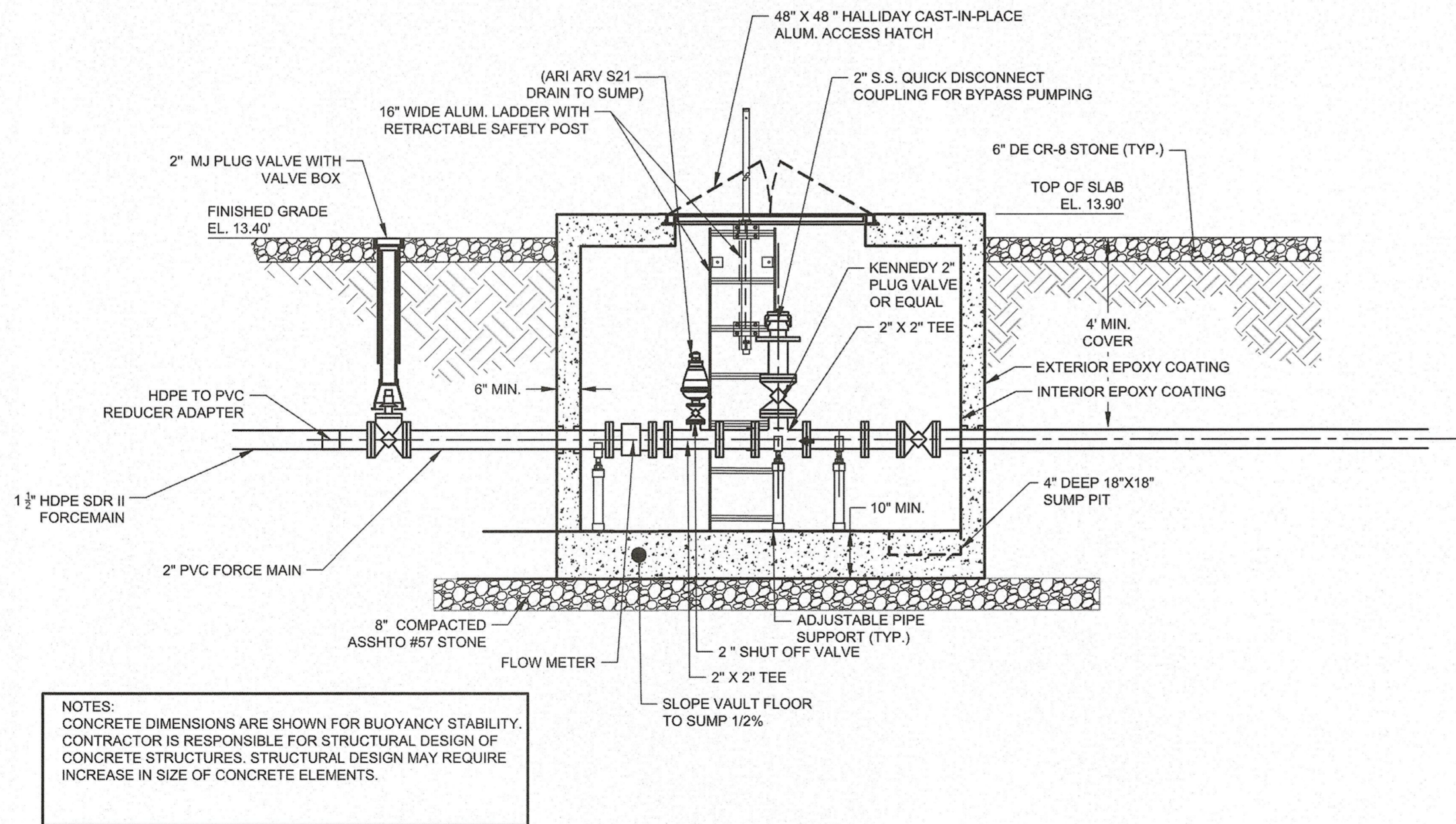
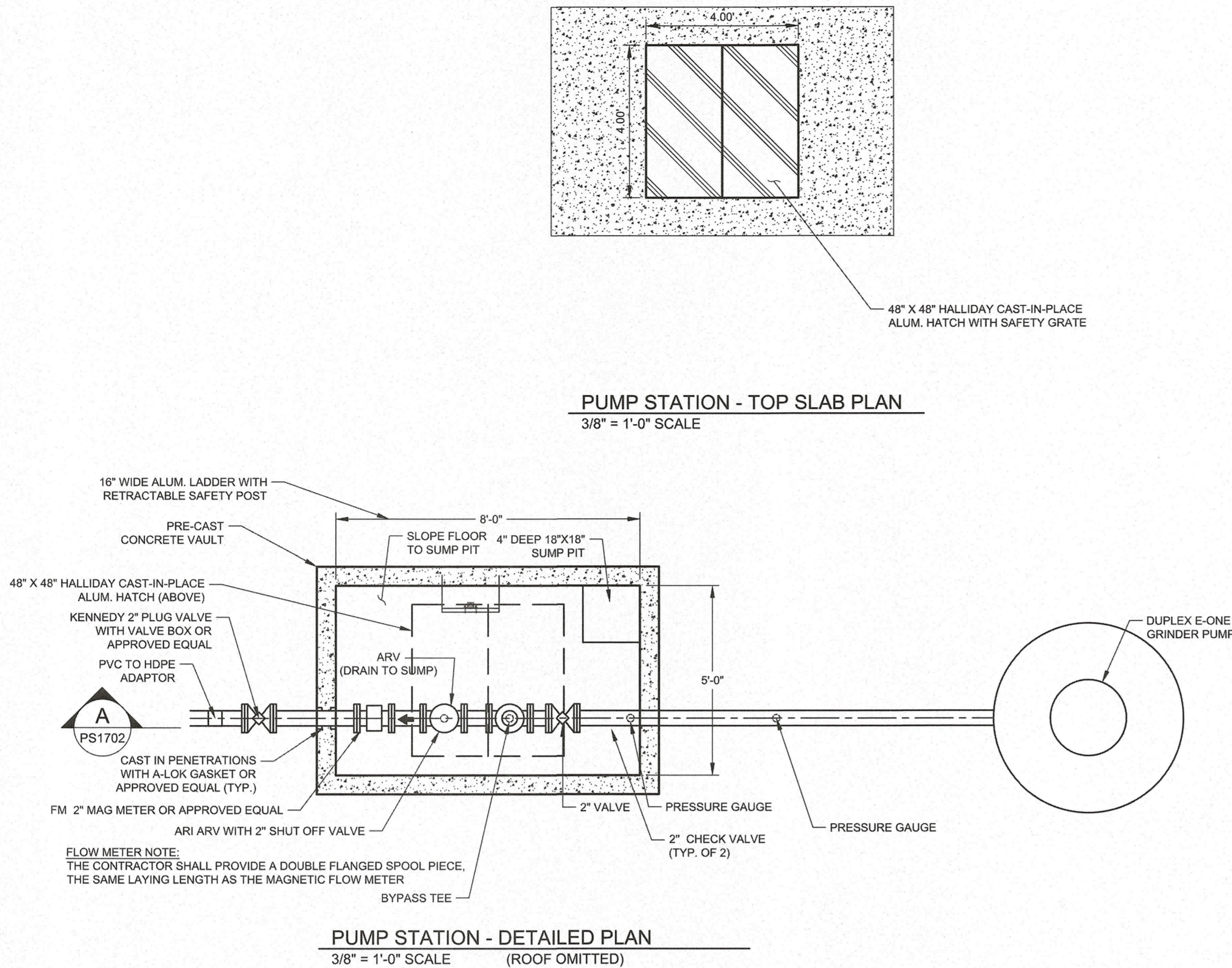
1

CS1703

NOTE:
ADD CONCRETE BALLAST RING 8" WIDE X 12" DEEP TO THE WETWELL AT THE DESIGNATED LOCATION

NOTE:

1. FENCE TO BE AUGUSTA 6 FOOT HIGH 8 FOOT PANELS AS MANUFACTURED BY WEATHERABLES COMPLETE WITH 6 FOOT HIGH BY 137 INCH DOUBLE GATES. INSTALL 5" X 5" X 9" ALUMINUM GATE POST INSERTS IN 5" X 5" X 9" POSTS AND 5" X 5" NEW ENGLAND STYLE POST CAPS. INSTALL PER MANUFACTURERS INSTRUCTIONS.
2. FLOW METER TO BE PROMAG 400W AS MANUFACTURED ENDRESS HAUSER OR EQUAL.
3. BYPASS TO MATCH TOWN OF LEWIS PORTABLE EQUIPMENT
4. ALL NECESSARY EQUIPMENT TO BE PROVIDED AND INSTALLED BY POINT WATCH COMMUNICATION AS REQUIRED BY CITY OF LEWIS



GENERAL NOTES FOR PUMP STATION (CIVIL MECHANICAL):

1. ALL WORK SHALL BE PERFORMED IN ACCORDANCE WITH CITY OF LEWES STANDARDS AND SPECIFICATIONS.
2. THE STRUCTURAL DESIGN OF THE WET WELL AND VALVE CHAMBER, INCLUDING ANTI-FLOATATION CALCULATIONS, SHALL BE PROVIDED BY THE PRECAST CONCRETE MANUFACTURER AND SEALED BY A PROFESSIONAL ENGINEER REGISTERED IN THE STATE OF DELAWARE. ADDITIONAL CONCRETE IS TO BE PLACED IN THE FIELD TO OVERCOME BUOYANCY.
3. CONCRETE EDGES ABOVE FINISHED GRADE SHALL HAVE 3/4" CHAMFER.
4. WALLS AND TOP OF VAULTS SHALL HAVE A MINIMUM THICKNESS OF 8" AND THE BOTTOM SHALL HAVE A MINIMUM THICKNESS OF 10" OR AS INDICATED ON PLAN AND SHALL BE DESIGNED FOR A LIVE LOAD OF 300 PSF, UNLESS OTHERWISE NOTED.
5. WET WELL TO BE A MINIMUM OF 6" ABOVE FINISHED GRADE.
6. ALUMINUM LADDERS, ACCESS DOORS, ETC. IN CONTACT WITH CONCRETE SHALL BE COATED WITH AN 24 MIL TAR EPOXY.
7. ALL EXTERIOR PRECAST CONCRETE BELOW FINISH GRADE SHALL RECEIVE A COATING OF EPOXY WATERPROOFING COMPOUND.
8. EXACT DIMENSIONS FOR LOCATION OF PUMPS, GUIDERAILS, ACCESS DOORS, ETC. SHALL BE OBTAINED FROM PUMP MANUFACTURER'S APPROVED SHOP DRAWINGS.
9. FORCE MAIN PIPING SHALL BE ANCHORED WITH THRUST BLOCKS AT ALL BENDS, IF FUSED HDPE IS NOT USED.
10. ALL PIPING WORK SHALL INCLUDE MISCELLANEOUS PIPING MATERIALS AND FITTINGS, INCLUDING, BUT NOT LIMITED TO, FLANGE FILLERS, BEVELED AND FLAN SPACERS, SPOOLS, UNI-FLANGES, COUPLINGS AND ALL OTHER MATERIALS AS REQUIRED FOR A COMPLETE AND OPERABLE SYSTEM.
11. ALL PIPING SHALL BE INSTALLED WITH PIPE SUPPORTS, INCLUDING, BUT NOT LIMITED TO, HANGERS AND FLOOR STANDS. ALL HARDWARE SHALL BE STAINLESS STEEL.

SYSTEM CONTROL NOTES:

1. THE CITY OF LEWES SHALL PROVIDE AND INSTALL THE SCADA SYSTEM REQUIRED FOR THE MONITORING AND COMMUNICATION EQUIPMENT.
2. THE CONTRACTOR SHALL COOPERATE WITH THE CITY OF LEWES WITH RESPECT TO ACCESS TO THE SITE AND PROVIDING POWER AND ASSOCIATED DATA INPUT FACILITIES.
3. THE WORK SHALL INCLUDE ALL LABOR, MATERIALS, EQUIPMENT AND SERVICES NECESSARY FOR AND INCIDENTAL TO THE COMPLETE AND SATISFACTORY INSTALLATION OF THE PUMP CONTROL PROGRAMMABLE LOGIC CONTROLLER (PLC), OPERATOR INTERFACE, AND SUPERVISORY CONTROL DATA ACQUISITION COMPONENTS (SCADA) INCLUDING BUT NOT LIMITED TO THE RADIO TRANSCEIVER, MODEMS, ANTENNA, CABLES, SOFTWARE, ETC. THE CITY OF LEWES WILL ADVISE WHICH SYSTEM SHOULD BE PROVIDED.
4. THE SYSTEM SHALL PROVIDE ALARM ANNUNCIATION, SYSTEM MONITORING, DATA COLLECTION, HISTORICAL TRENDING, AND REMOTE AUTOMATIC MODE OVERRIDE.
5. UPDATING THE SYSTEM AT THE CENTRAL MONITORING STATION WILL BE BY OTHERS.
6. A SYSTEMS INTEGRATOR EXPERIENCED IN PLC SYSTEMS SHALL BE PROVIDED BY THE CITY OF LEWES FOR ALL THE WORK PERTAINING TO THE INSTALLATION AND PROPER FUNCTIONING OF THE PUMP CONTROL PLC SYSTEM, PROVIDING TECHNICAL SUPERVISION FOR THE INSTALLATION AND CONNECTIONS TO EQUIPMENT, ALL TESTS AND OPERATIONAL DEMONSTRATIONS, AND EQUIPMENT CALIBRATIONS. IT SHALL BE THE SYSTEMS INTEGRATOR'S RESPONSIBILITY TO FURNISH A COMPLETE AND FUNCTIONAL, FULLY INTEGRATED PUMP CONTROL PLC SYSTEM, INCLUDING ALL SOFTWARE AND HARDWARE DEVICES NECESSARY TO INTERFACE THE COMPONENTS OF THE PUMPING STATION.
7. THE SYSTEM INTEGRATOR SHALL PROVIDE SCADA FUNCTION PROGRAMMING IN THE PUMP CONTROL PLC AND COMPONENTS FOR RADIO COMMUNICATIONS AND BACK-UP POWER, UNINTERRUPTIBLE POWER SUPPLY (UPS) AND SURGE PROTECTION, SYSTEM INSTALLATION CD ROM OR DISKS FOR ALL SOFTWARE, OPERATOR INTERFACE SCREENS AT THE PUMPING STATION HMI (HUMAN MACHINE INTERFACE), AND ALL INCIDENTAL EQUIPMENT NECESSARY FOR A PROPERLY FUNCTIONING FACILITY.
8. RADIO INSTALLATIONS SHALL BE COORDINATED WITH THE CITY OF LEWES REQUIREMENTS.
9. SUBMITTALS SHALL INCLUDE AND NOT BE LIMITED TO MANUFACTURERS DESCRIPTIVE LITERATURE AND DATA SHEETS FOR OPERATOR INTERFACE SCREENS, SOFTWARE, PLC'S, RADIO EQUIPMENT, UPS AND SURGE PROTECTION DEVICES, WIRING SCHEMATICS, SOFTWARE PROGRAMS AND PROGRAMMING, PROGRESS SCHEDULES, AND SHOP DRAWINGS SHOWING DIMENSIONS, MOUNTING DETAILS, ENCLOSURES, AND EXTERNAL CONNECTION DETAILS. EQUIPMENT SHALL BE HOUSED IN THE EQUIPMENT CONTROL CABINET. THE EXACT SIZE OF THE CABINET SHALL BE COORDINATED WITH THE PUMP/PUMP CONTROL MANUFACTURER(S) AND SIZED TO MOUNT THE EQUIPMENT FOR EASE OF OPERATION AND MAINTENANCE.
10. INTEGRATED OPERATION AND MAINTENANCE MANUALS AND OPERATING TRAINING SHALL BE PROVIDED.
11. ALL PUMP CONTROL PLC SYSTEM COMPONENTS SHALL BE PROVIDED BY PUMP MANUFACTURER (E-ONE) OR APPROVED EQUAL, AND HAVE CONTROLS WITH PUMP RUNNING AND ALARM LIGHTS, PUMP ELAPSED TIME METERS, AND FLOAT SYSTEM WITH HIGH LEVEL ALARM.
12. OPERATOR INTERFACE SHALL BE SUPPLIED BY PUMP MANUFACTURER OR APPROVED EQUAL.
13. SURGE PROTECTOR SHALL BE LEVITON CATALOGUE No. 51020-WM; UPS SHALL BE PULSAR ES AS MANUFACTURED BY MGE. UPS SYSTEMS CATALOGUE PART No. 89363.
14. A TEST PROCEDURE SHALL BE DEVELOPED BY THE SYSTEM INTEGRATOR FOR THE CITY OF LEWES APPROVAL NO LATER THAN 14 DAYS PRIOR TO THE TEST DATE. ALL COMPONENTS SHALL BE TESTED AND WITNESSED BY ARTESIAN WASTEWATER MANAGEMENT, INC. AND OWNER'S REPRESENTATIVE INCLUDING FACTORY TESTING OF THE PUMP CONTROL PLC SYSTEM.
15. THE SYSTEM INTEGRATOR SHALL PROVIDE SPARE PARTS AS RECOMMENDED BY THE MANUFACTURER AS WELL AS THE FOLLOWING: A SPARE BOARD FOR EACH TYPE USED IN THE PLC INCLUDING I/O BOARDS, PLC PROCESSOR, AND COMMUNICATIONS, ETC., A RADIO MODEM, AND A PLC POWER SUPPLY WITH BATTERY BACKUP.
16. THE PUMP CONTROL PROGRAMMABLE LOGIC CONTROLLER (PLC) SHALL
 - 16.1. BE OF MODULAR DESIGN, CAPABLE OF SUPPORTING REMOTE I/O, OPERATOR INTERFACE, ADDITIONAL PLC PROCESSORS, AND REMOTE COMMUNICATIONS.
 - 16.2. PROVIDE ALL HARDWARE, SOFTWARE, COMMUNICATION DRIVERS, AND CABLES NECESSARY TO FACILITATE COMMUNICATIONS WITH THE CENTRAL PLC.
 - 16.3. ALLOW FOR FUTURE I/O EXPANSION BY ADDING I/O MODULES.
 - 16.4. OPERATE FROM A 120V AC/24 VDC UPS WITH A CHARGER AND BATTERIES TO SUPPLY UP TO ONE HOUR OF BACKUP POWER.
 - 16.5. USE PROGRAMS HAVING RELAY LADDER LOGIC FORMAT.
 - 16.6. INCLUDE THE FOLLOWING FUNCTIONS: EVENT SEQUENCER, DOWN COUNTING TIMER (UP TO 30 MINUTES BY SECONDS), AVERAGING OF INPUT SIGNAL TOTALIZING OF INPUT SIGNAL, COMPARATOR, AND PID CONTROLLER.
 - 16.7. BE SUITABLE FOR BACK PANEL OR RACK MOUNTING.
 - 16.8. OPERATE IN AN INDUSTRIAL ENVIRONMENT, 0°C TO 60°C, 5 TO 95% RELATIVE HUMIDITY, WITH NO EXTERNAL FORCED VENTILATION.
 - 16.9. BE PROVIDED WITH THE MINIMUM NUMBER OF I/O'S AS REQUIRED BY THE I/O LISTS, AND SPARE I/O'S FOR AN ADDITIONAL (8) RELAY CONTACT OUTPUTS, (4) 4-20 mADC ANALOG INPUTS, AND (4) 4-20 mADC ANALOG OUTPUTS.



PENNONI ASSOCIATES INC.
18072 Davidson Drive
Milton, DE 19068
T 302.684.8030 F 302.684.8054

ALL DIMENSIONS MUST BE VERIFIED BY CONTRACTOR
AND OWNER MUST BE NOTIFIED OF ANY
DISCREPANCIES BEFORE PROCEEDING WITH WORK



WHITE'S POND PRESERVE

TM: 335-8-12/79 00
MONROE AVE EXTENDED
LEWES, DE 19958

PUMP STATION PLAN AND SECTIONS

JTJ DE INVESTMENTS LLC

22261 WATERVIEW ROAD
LEWES, DE 19958

NO.	DATE	REVISIONS	BY

ALL DOCUMENTS PREPARED BY PENNONI ASSOCIATES ARE INSTRUMENTS OF SERVICE IN RESPECT OF THE PROJECT. THEY ARE NOT INTENDED OR REPRESENTED TO BE SUITABLE FOR REUSE BY OWNER OR OTHERS ON THE EXTENSIONS OF THE PROJECT OR ON ANY OTHER PROJECT. ANY REUSE WITHOUT WRITTEN VERIFICATION OR ADAPTATION BY PENNONI ASSOCIATES FOR THE SPECIFIC PURPOSE INTENDED WILL BE AT OWNERS SOLE RISK AND WITHOUT LIABILITY OR LEGAL EXPOSURE TO PENNONI ASSOCIATES. AND OWNER SHALL INDEMNIFY AND HOLD HARMLESS PENNONI ASSOCIATES FROM ALL CLAIMS, DAMAGES, LOSSES AND EXPENSES ARISING OUT OF OR RESULTING THEREFROM.

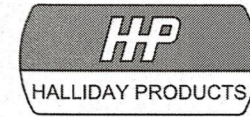
PROJECT	GRNCL22001
DATE	2024-11-01
DRAWING SCALE	AS SHOWN
DRAWN BY	RWS
APPROVED BY	AMD

PS1702

SHEET 2 OF 8

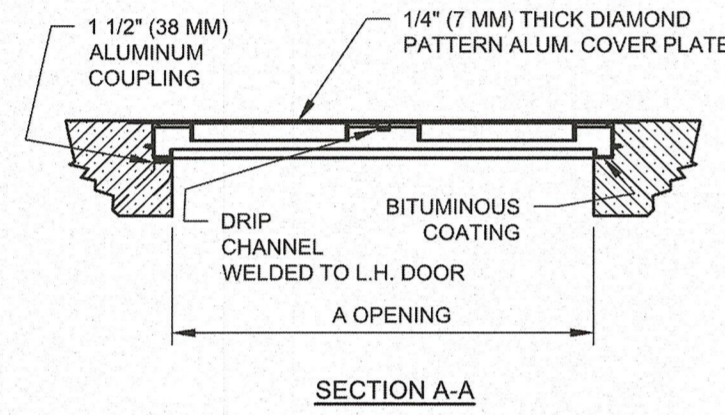
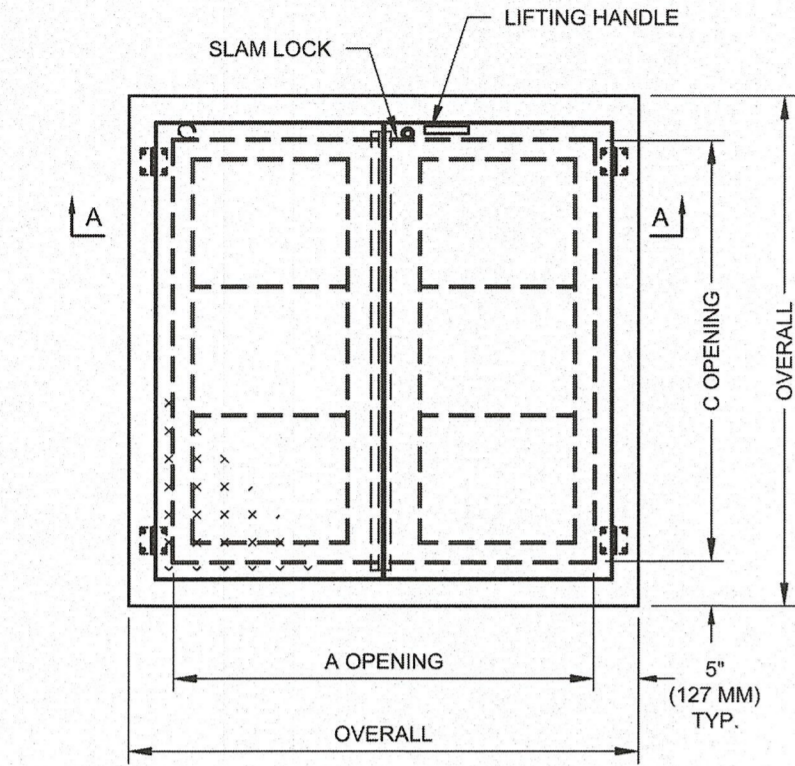
SERIES W2C ACCESS DOOR

- STANDARD FEATURES:**
- AUTO-LOCK T-316 STAINLESS STEEL HOLD OPEN ARM WITH RELEASE HANDLE
 - T-316 STAINLESS STEEL HINGES AND ATTACHING HARDWARE
 - T-316 STAINLESS STEEL SLAM LOCK WITH REMOVABLE KEY
 - STAINLESS STEEL COMPRESSION SPRING ASSIST
 - BUILT-IN NEOPRENE CUSHION/GASKET
 - NON-OZONE DEPLETING BITUMINOUS COATING
 - DOUBLE LEAF CONSTRUCTION
 - 300 LBS. PER SQ. FT. LOAD RATING
 - (1454 KG. PER SQ. METER LOAD RATING)
 - EXTRUDED ALUMINUM CHANNEL FRAME
 - RECESSED LIFTING HANDLE
 - INTERIOR SAFETY GRATE
 - LIFETIME GUARANTEE



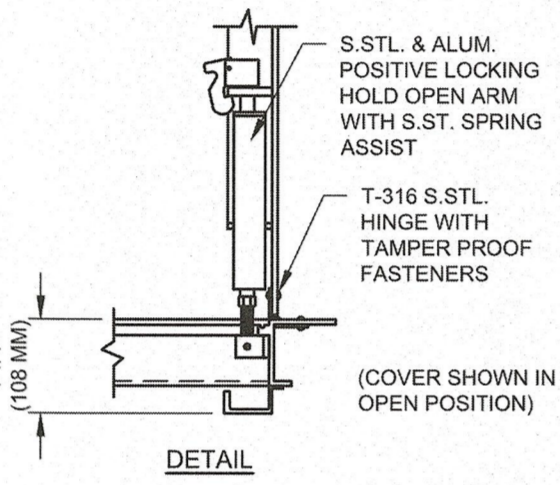
www.HallidayProducts.com
Phone 800-298-1027
Fax 407-298-4534
Sales@HallidayProducts.com

QTY.	MODEL NO.	A DIM. INCHES (MM)	C DIM. INCHES (MM)	UNIT WT. (LBS. (KG.))
1	W2C4242	42 (1067)	42 (1067)	119 (54)
1	W2C4842	48 (1219)	42 (1067)	130 (59)
	W2C4848	48 (1219)	48 (1219)	142 (64)
	W2C5442	54 (1372)	42 (1067)	141 (64)
	W2C5448	54 (1372)	48 (1219)	154 (70)
	W2C5454	54 (1372)	54 (1372)	166 (75)
	W2C6030	60 (1524)	30 (762)	122 (55)
	W2C6036	60 (1524)	36 (914)	135 (61)
	W2C6042	60 (1524)	42 (1067)	151 (68)
2	W2C6048	60 (1524)	48 (1219)	165 (75)
	W2C6054	60 (1524)	54 (1372)	179 (81)
	W2C6060	60 (1524)	60 (1524)	195 (88)
	W2C6036	66 (1676)	36 (914)	145 (66)
	W2C6048	66 (1676)	48 (1219)	177 (80)
	W2C7236	72 (1829)	36 (914)	154 (70)
	W2C7242	72 (1829)	42 (1067)	173 (78)
	W2C7248	72 (1829)	48 (1219)	188 (85)
	W2C7254	72 (1829)	54 (1372)	204 (92)
	W2C7260	72 (1829)	60 (1524)	222 (101)



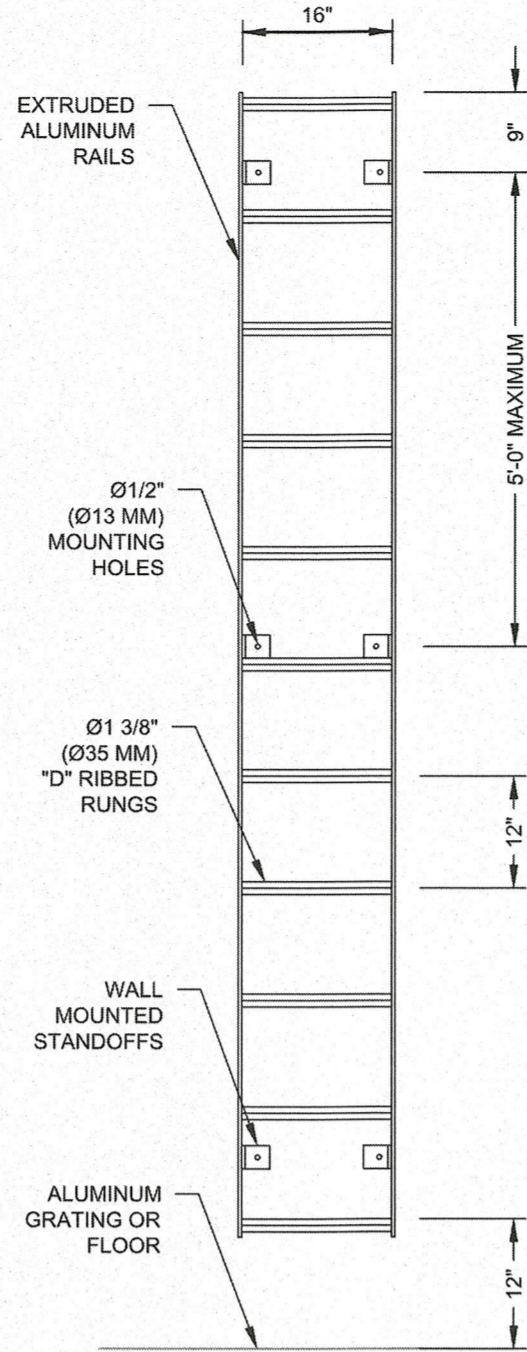
DETAIL- VALVE VAULT
NOT TO SCALE

1
PS1703



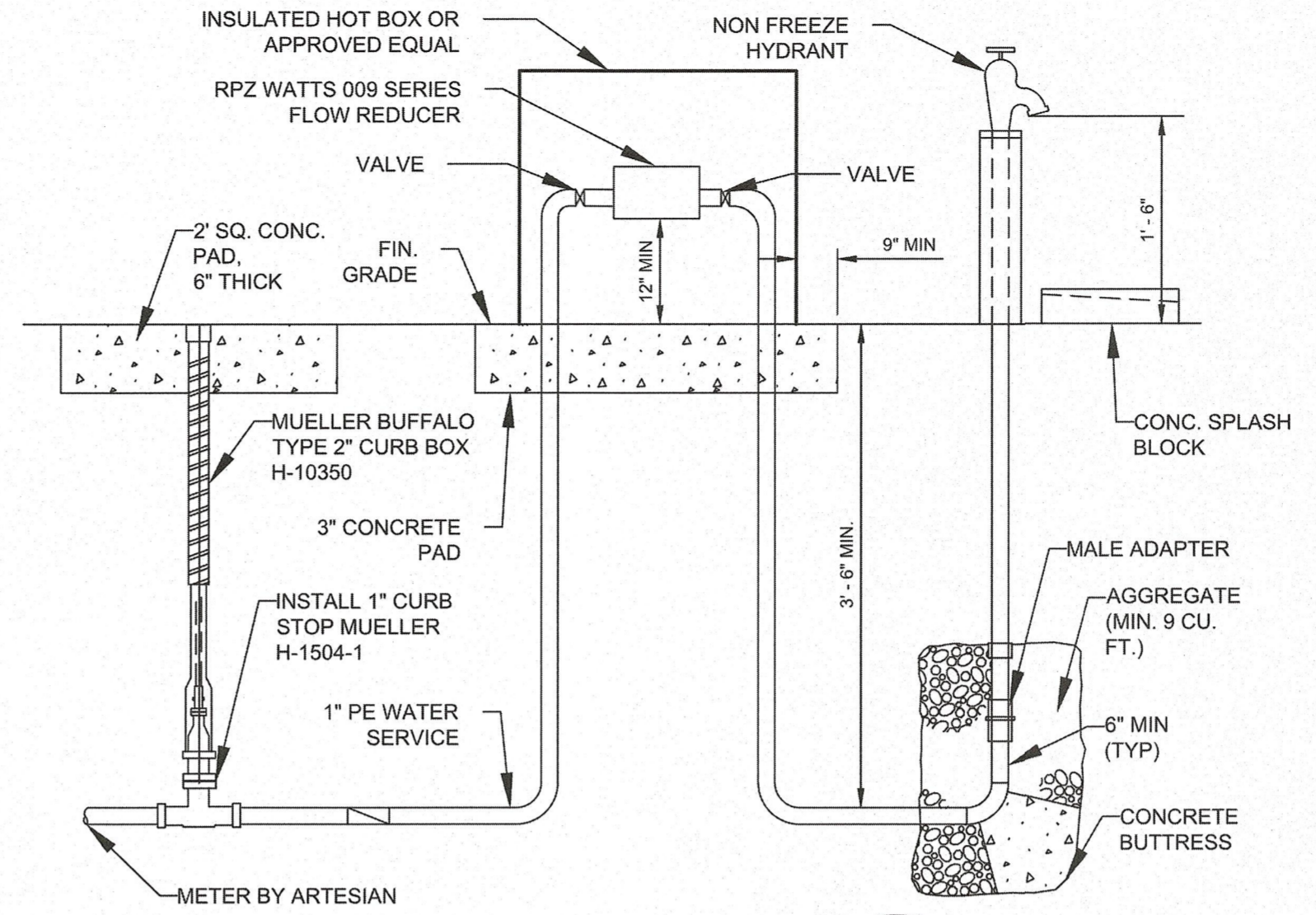
DETAIL-WALL MOUNTED ALUMINUM LADDER DETAIL
NOT TO SCALE

2
PS1703



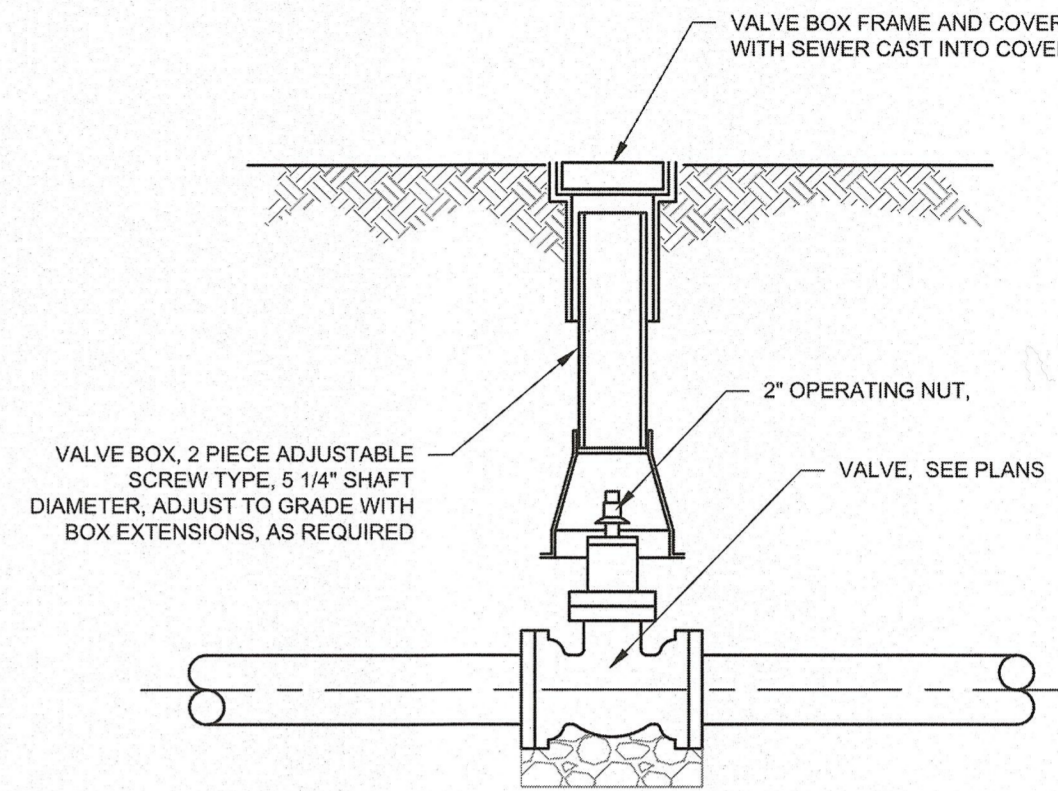
DETAIL- YARD HYDRANT
NOT TO SCALE

3
PS1703



DETAIL- VALVE BOX DETAIL
NOT TO SCALE

4
PS1703



WHITE'S POND PRESERVE

TM: 335-8-12-79-00

MONROE AVE EXTENDED
LEWES, DE 19958

PUMP STATION DETAILS

JTJ DE INVESTMENTS LLC
22261 WATERVIEW ROAD
LEWES, DE 19958

NO.	REVISIONS	DATE	BY

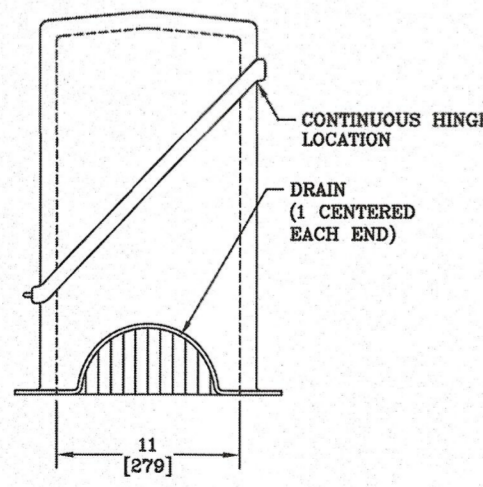
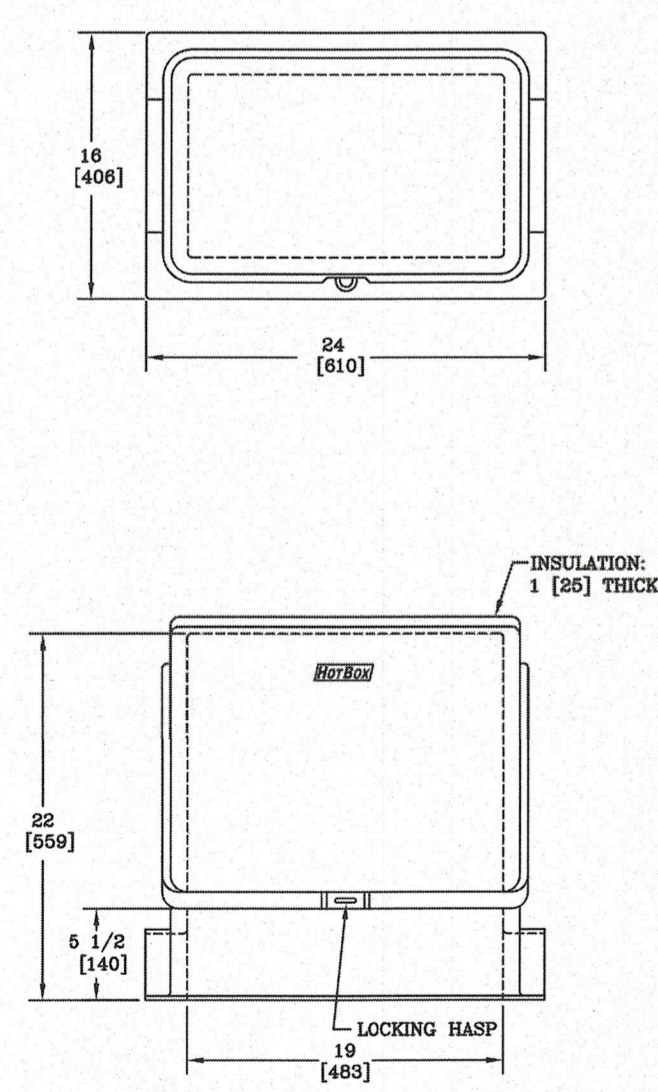
ALL DOCUMENTS PREPARED BY PENNONI ASSOCIATES ARE INSTRUMENTS OF SERVICE IN RESPECT OF THE PROJECT. THEY ARE NOT INTENDED OR REPRESENTED TO BE SUITABLE FOR REUSE BY OWNER OR OTHERS ON THE EXTENSIONS OF THE PROJECT OR ON ANY OTHER PROJECT. ANY REUSE WITHOUT WRITTEN VERIFICATION OR ADAPTATION BY PENNONI ASSOCIATES FOR THE SPECIFIC PURPOSE INTENDED WILL BE AT OWNERS' SOLE RISK AND WITHOUT LIABILITY OR LEGAL EXPOSURE TO PENNONI ASSOCIATE, AND OWNER SHALL INDEMNIFY AND HOLD HARMLESS PENNONI ASSOCIATES FROM ALL CLAIMS, DAMAGES, LOSSES AND EXPENSES ARISING OUT OF OR RESULTING THEREFROM.

PROJECT: GRNCL22001
DATE: 2024-11-01
DRAWING SCALE: AS SHOWN
DRAWN BY: RWS
APPROVED BY: AMD

PS1703
SHEET 3 OF 8

DETAIL- HEATED HOT BOX
NOT TO SCALE

5
PS1703

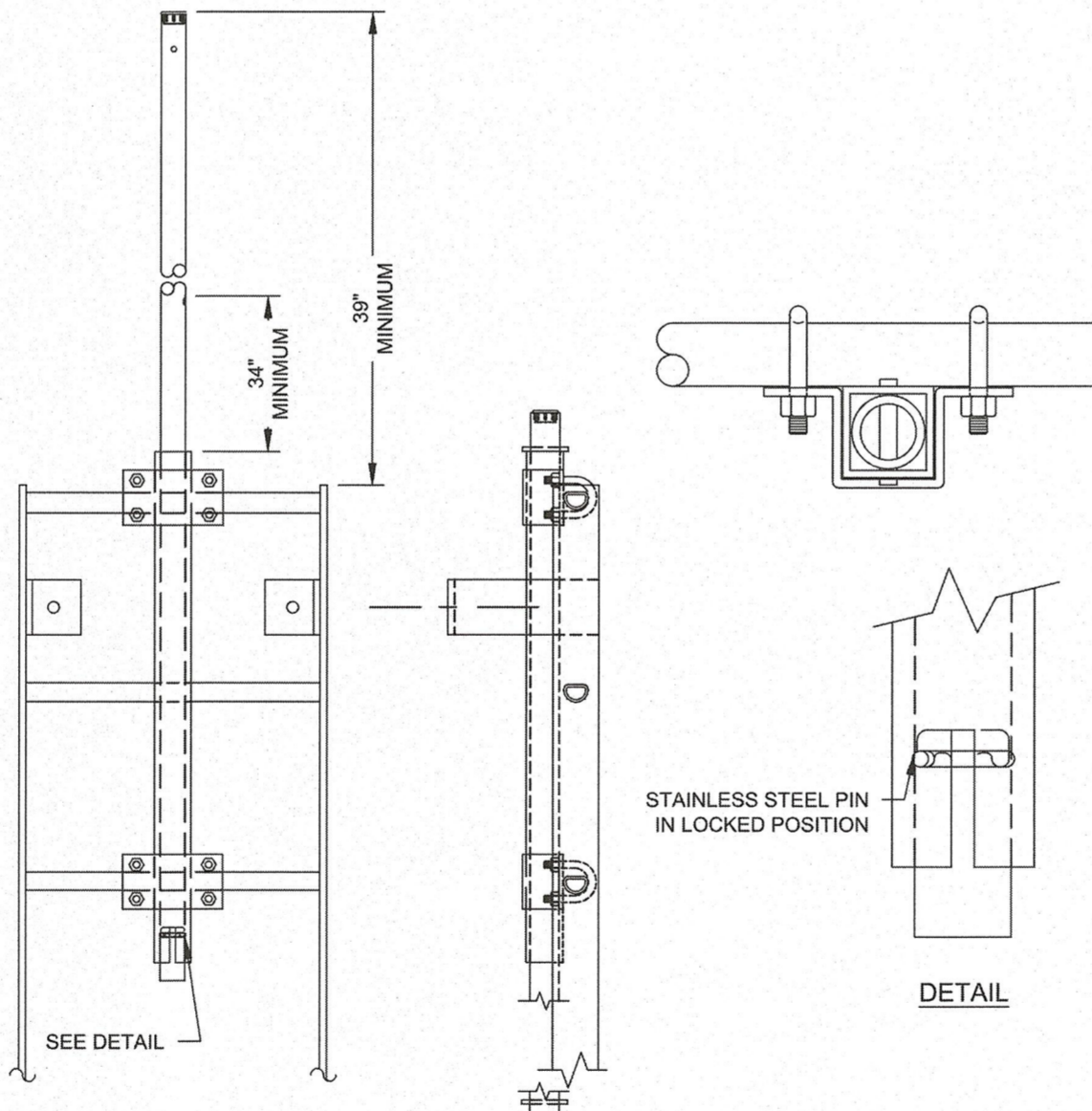


- NOTES:**
- HEAT IS PROVIDED BY A SOWATT, 120V SINGLE PHASE HEAT TRACE TAPE FOR UNHEATED VERSION REPLACE THE PREFIX "H" WITH AN "L".
 - FOUR INTERNAL BRACKETS AND CONCRETE ANCHORS ARE SUPPLIED WITH THE ENCLOSURE. (NOT SHOWN)
 - STANDARD COLOR IS BEIGE. (OPTIONS AVAILABLE)
 - FOR RECOMMENDED SLAB SIZE ADD 9" [229] TO THE ENCLOSURE EXTERIOR.
 - INTERIOR DIMENSIONS ARE NOMINAL.
 - OLD P/N: HB-75

REV.	DATE	DESCRIPTION	BY	CHKD.
001	12/15/20	ISSUED FOR CONSTRUCTION		
002	1/10/21	REVISED TO ADD HOT BOX TO FIBERGLASS FLIP TOP ENCLOSURE		

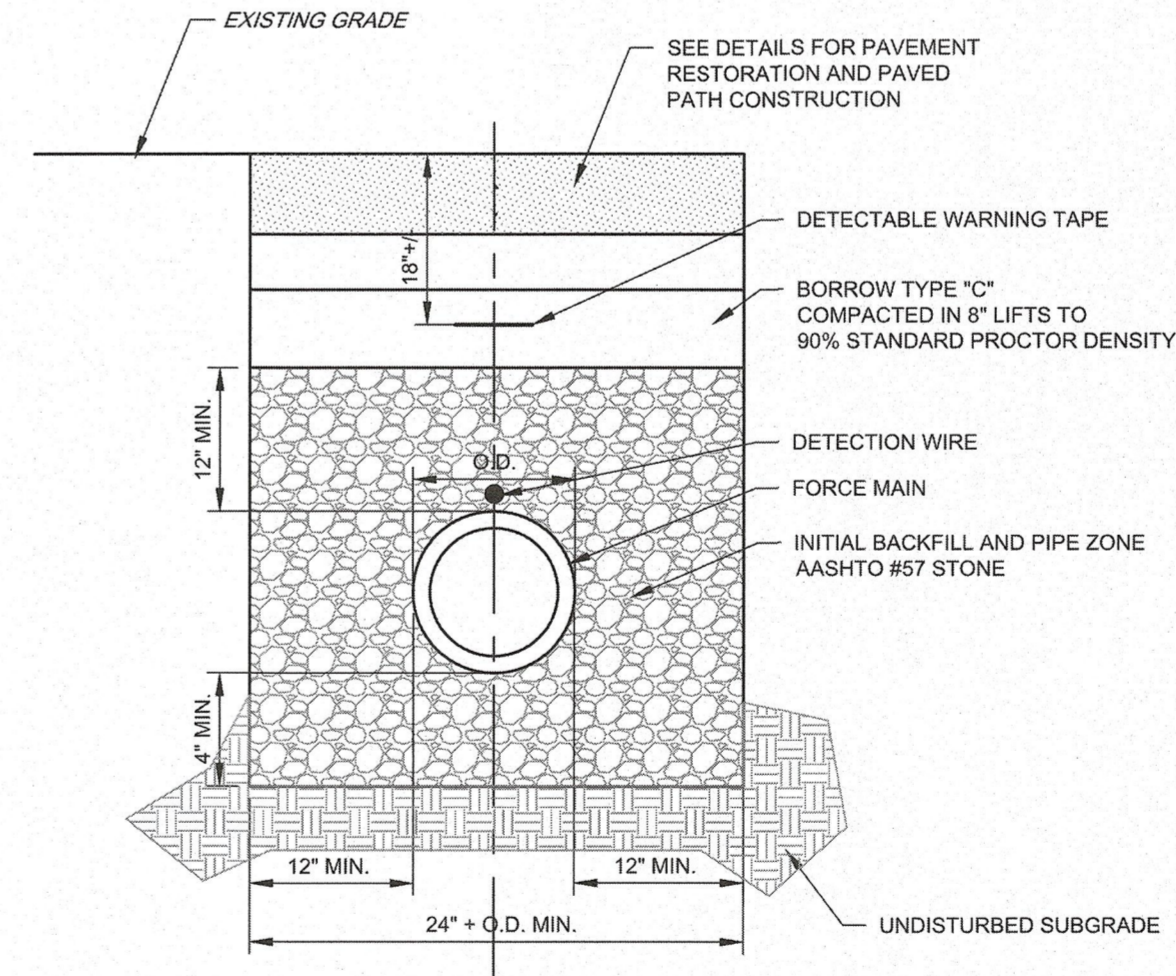
DETAIL- ALUMINUM LADDER EXTENSION DETAIL
NOT TO SCALE

6
PS1703



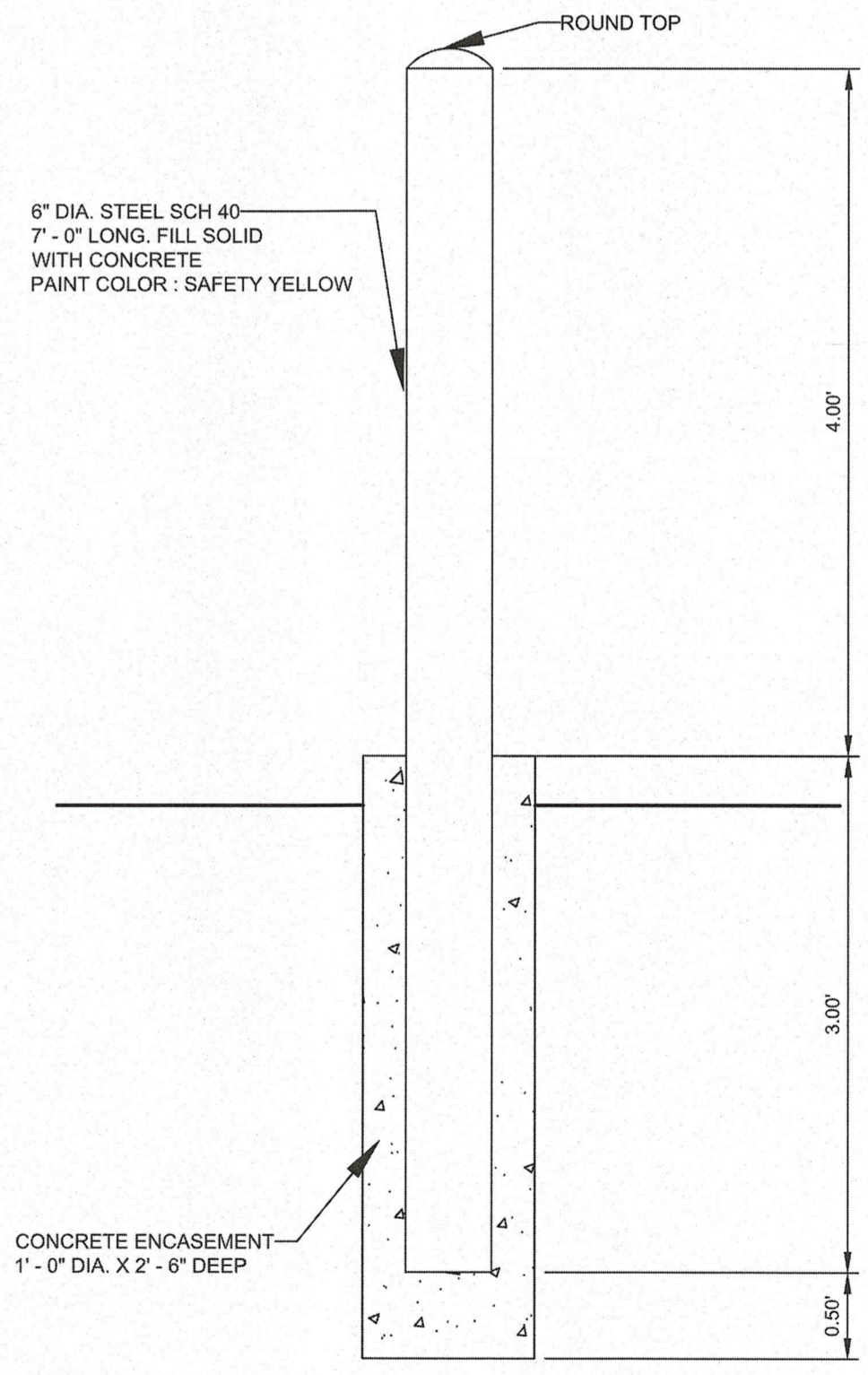
DETAIL- FORCE MAIN TRENCH
NOT TO SCALE

7
PS1703



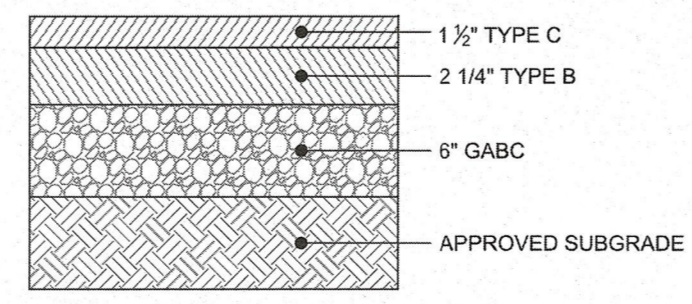
DETAIL- STANDARD BOLLARD
NOT TO SCALE

8
PS1703

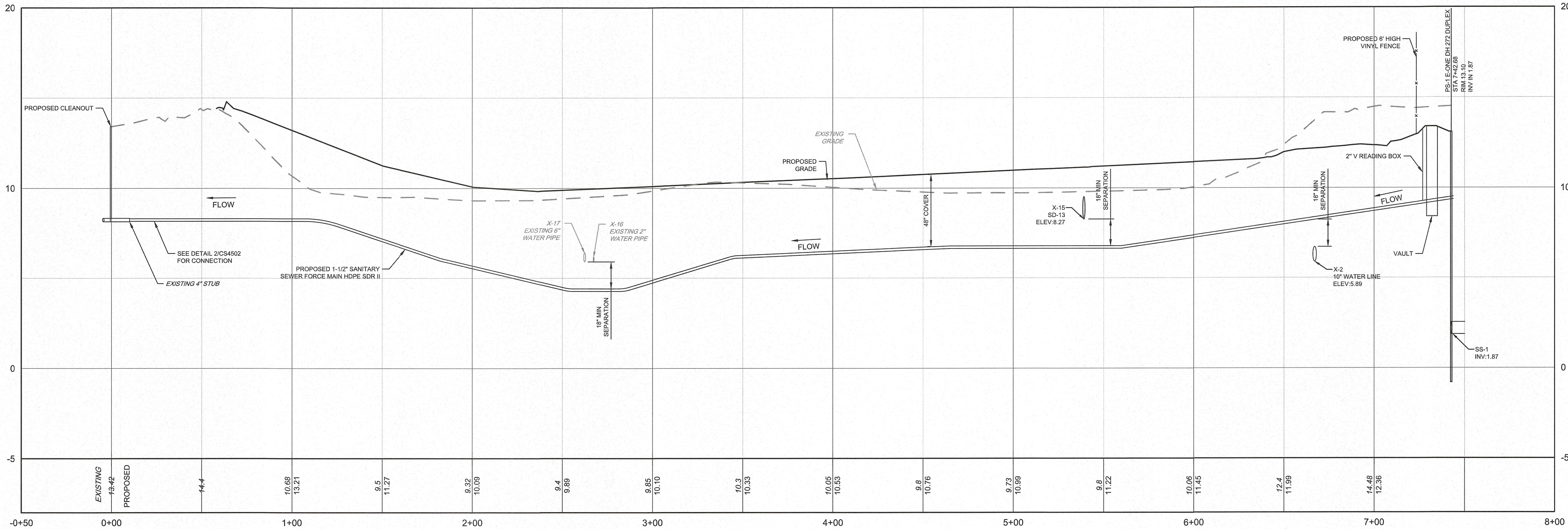


DETAIL- PUMP STATION ACCESS DRIVE DETAIL
NOT TO SCALE

9
PS1703



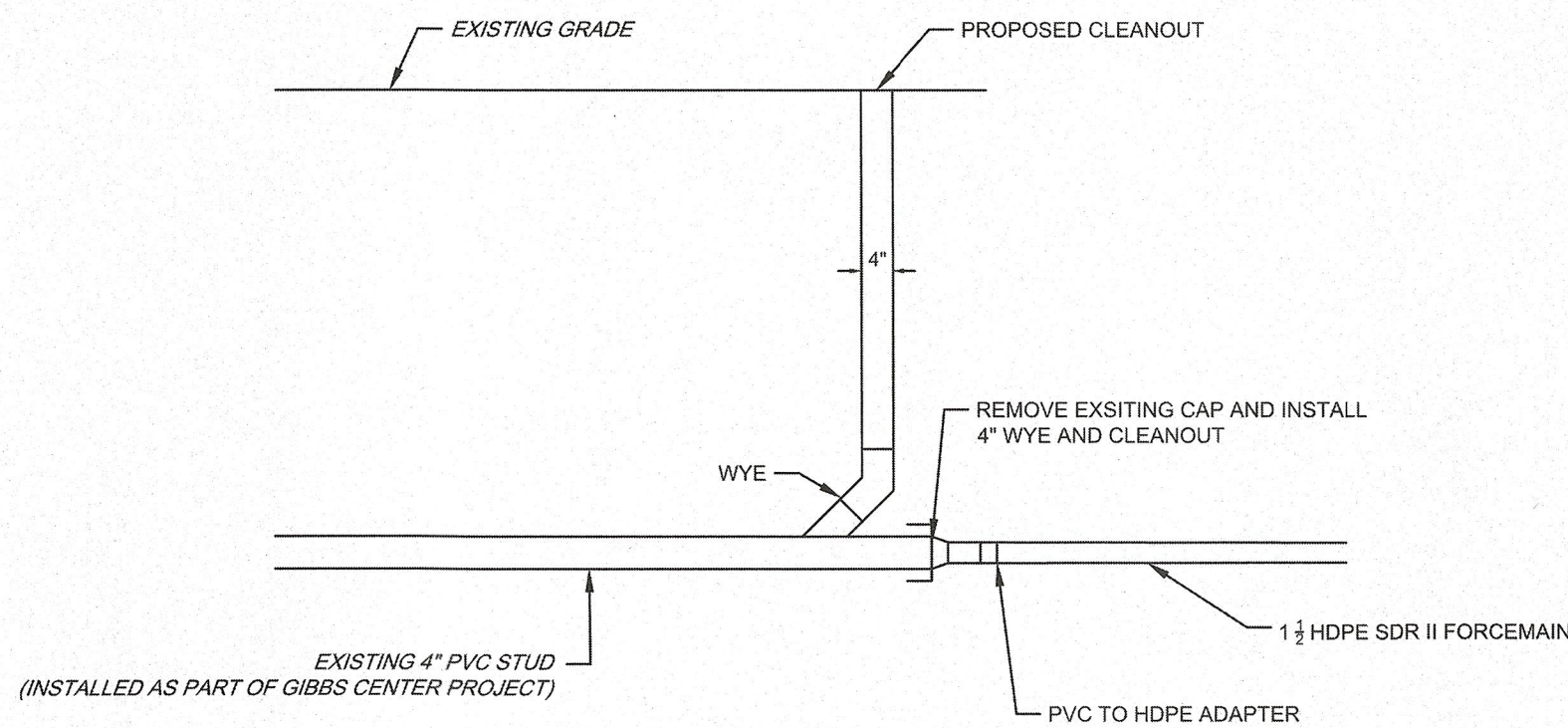
U:\Account\GRNCL\GRNCL22001 - White Pond Preserve Subdivision\DESIGN\SHEET\CS4502.dwg PLOTTED: 3/26/2025 3:45 PM BY: Ahmed Mohamed PROJECT STATUS: — PLOTTED BY: Pennoni NS:ab



PROFILE - SANITARY SEWER FORCE MAIN

H: 1" = 30' , V: 1" = 3'

1
PS1704



DETAIL 2 - SCHEMATIC CONNECTION DETAIL AT EXISTING 4" STUB
NOT TO SCALE

2
PS1704

WHITE'S POND PRESERVE
TM: 335-8-12/79.00
MONROE AVE EXTENDED
LEWES, DE 19958

SANITARY SEWER FORCE MAIN PROFILES

JTJ DE INVESTMENTS LLC
22261 WATERVIEW ROAD
LEWES, DE 19958

NO.	DATE	REVISIONS	BY
1	2025-03-04	REVISED PER CITY OF LEWES AND SCD COMMENTS	TOU

ALL DOCUMENTS PREPARED BY PENNONI ASSOCIATES ARE INSTRUMENTS OF SERVICE IN RESPECT OF THE PROJECT. THEY ARE NOT INTENDED OR REPRESENTED TO BE SUITABLE FOR REUSE BY OWNER OR OTHERS ON THE EXTENSIONS OF THE PROJECT OR ON ANY OTHER PROJECT. ANY REUSE WITHOUT WRITTEN VERIFICATION OR ADAPTATION BY PENNONI ASSOCIATES FOR THE SPECIFIC PURPOSE INTENDED WILL BE AT OWNERS SOLE RISK AND WITHOUT LIABILITY OR LEGAL EXPOSURE TO PENNONI ASSOCIATES. AND OWNER SHALL INDEMNIFY AND HOLD HARMLESS PENNONI ASSOCIATES FROM ALL CLAIMS, DAMAGES, LOSSES AND EXPENSES ARISING OUT OF OR RESULTING THEREFROM.

PROJECT	GRNCL22001
DATE	2024-11-01
DRAWING SCALE	1" = 30'
DRAWN BY	RWS
APPROVED BY	AMD

PS1704
SHEET 4 OF 8

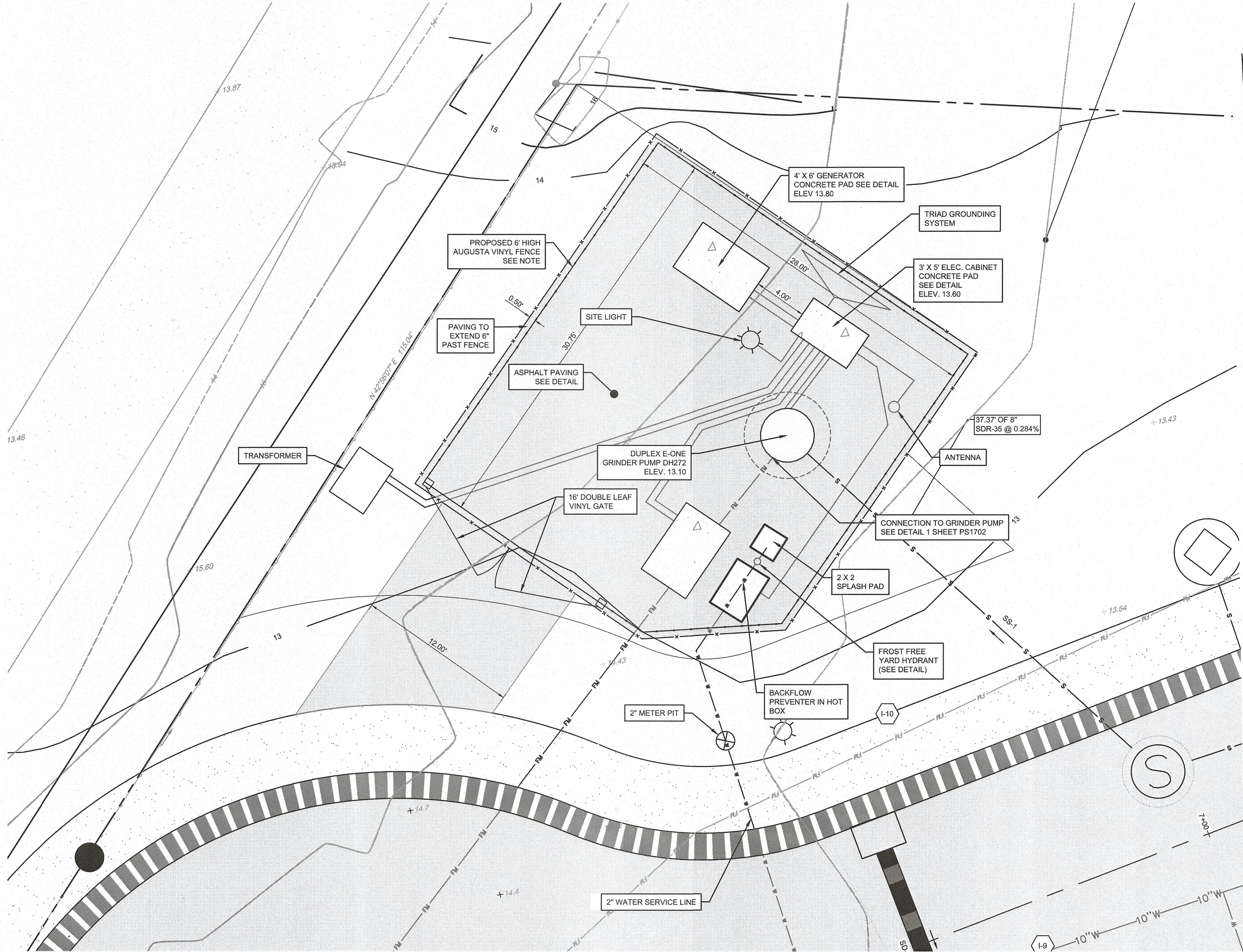
ALL DIMENSIONS MUST BE VERIFIED BY CONTRACTOR AND OWNER MUST BE NOTIFIED OF ANY DISCREPANCIES BEFORE PROCEEDING WITH WORK



PENNONI ASSOCIATES INC.
18072 Davidson Drive
Milton, DE 19968
T 302.684.8030 F 302.684.8054



U:\Account\GRNCL\GRNCL 22001 - White's Pond Preserve Subdivision\DESIGN\ SHEET PS1705.dwg PLOTTED: 3/20/2025 1:46 PM BY: Ahmed Mohamed PLOTSTYLE: Pennoni VCS.ctb



GENERAL NOTES:

- THIS PLAN AND APPROVAL IS FOR DOMESTIC WASTE WATER ONLY.
- ALL FACILITIES TO MEET ARTESIAN WASTEWATER MANAGEMENT INC. STANDARDS AND SPECIFICATIONS.

SITE NOTES:

- THE PROPERTY LINES SHOWN ON THIS PLAT WAS TAKEN FROM DOCUMENTS OF PUBLIC RECORDS AS WELL AS ACTUAL FIELD SURVEY PREPARED BY PENNONI ASSOCIATES.
- THE TOPOGRAPHY SHOWN ON THIS PLAN WAS TAKEN FROM A PLAN PREPARED BY PENNONI ASSOCIATES, VERTICAL DATUM NAVD88, HORIZONTAL DATUM NAD83.
- SANITARY SEWER SERVICE FOR THE SUBDIVISION WILL BE HANDLED BY THE INLAND BAYS WATER TREATMENT FACILITY AS OPERATED BY SUSSEX COUNTY.
- WATER FOR THE SITE WILL BE PROVIDED BY ARTESIAN WATER COMPANY INC..
- WATER AND SEWER MAIN SHALL HAVE A MINIMUM OF 10 FEET OF HORIZONTAL AND A MINIMUM OF 18 INCHES VERTICAL CLEARANCE BETWEEN THEM.
- IF THE SITE CONTAINS WETLANDS CONFINED TO THE TAX DITCHES, ACTIVITIES WITHIN THESE WETLANDS MAY REQUIRE A PERMIT FROM THE U.S. ARMY CORPS OF ENGINEERS AND/OR THE STATE OF DELAWARE.
- THE SITE IS LOCATED IN ZONE X BASED ON THE FEMA FLOOD INSURANCE RATE MAP NUMBER 10005C0340K, MAP REVISED MARCH 16, 2015 AND IS DETERMINED TO NOT BE INSIDE THE 500 YEAR FLOODPLAIN
- THE SUSSEX CONSERVATION DISTRICT RESERVES THE RIGHT TO ADD, DELETE OR MODIFY ANY EROSION AND SEDIMENT CONTROL MEASURES AS THEY DEEM NECESSARY.
- ALL DISTURBED AREAS WITHIN THE RIGHT-OF-WAY, BUT NOT IN PAVEMENT, SHALL BE TOPSOILED (6" MINIMUM), FERTILIZED AND SEEDED.
- A 72 HOUR (MINIMUM) NOTICE SHALL BE GIVEN TO THE DELDOT DISTRICT PERMIT SUPERVISOR PRIOR TO STARTING ENTRANCE CONSTRUCTION.
- MISS UTILITY (611) OR 1-800-282-8555 SHALL BE NOTIFIED THREE (3) DAYS PRIOR TO EXCAVATION.
- ALL SIGNING FOR MAINTENANCE OF TRAFFIC IS THE CONTRACTORS RESPONSIBILITY, AND SHALL FOLLOW THE GUIDELINES SHOWN IN "DELAWARE 2000 TRAFFIC CONTROLS FOR STREETS AND HIGHWAY CONSTRUCTION, MAINTENANCE, UTILITY, AND EMERGENCY OPERATIONS."
- DAMAGE TO EXISTING SIGNS SHALL BE REPAIRED OR REPLACED AS PER THE "GUIDE FOR FABRICATION AND INSTALLATION OF TRAFFIC CONTROL DEVICES".
- ALL PROPOSED FOREST BUFFERS ARE TO BE MAINTAINED BY THE CONTRACTOR.
- ALL FIRE LANES, FIRE HYDRANTS AND FIRE DEPARTMENT CONNECTIONS SHALL BE MARKED IN ACCORDANCE WITH THE DELAWARE STATE FIRE PREVENTION REGULATIONS.

ELECTRICAL SITE PLAN

SCALE: 1" = 5'

NOTE:

ADD CONCRETE BALLAST RING 8" WIDE X 12" DEEP TO THE WETWELL AT THE DESIGNATED LOCATION

GENERAL NOTES FOR PUMP STATION CONSTRUCTION:

- ALL CONSTRUCTION SHALL BE PERFORMED IN ACCORDANCE WITH CITY OF LEWES STANDARDS AND SPECIFICATIONS LATEST EDITION.
- ALL WORK SHALL BE PERFORMED IN ACCORDANCE WITH THE OCCUPATIONAL SAFETY AND HEALTH ACT OF 1970 AND ALL AMENDMENTS THERETO. THESE DRAWINGS DO NOT INCLUDE THE NECESSARY COMPONENTS FOR CONSTRUCTION SAFETY.
- NO DEBRIS SHALL BE BURIED ON SITE. DEBRIS ENCOUNTERED DURING CONSTRUCTION SHALL BE REMOVED AT THE CONTRACTORS EXPENSE, TO AN AREA OR SITE WITH AN APPROVED DRY WASTE FILL PLAN AND EROSION AND SEDIMENT CONTROL PLAN.
- EXISTING UTILITIES, AS OF THIS DATE ARE SHOWN IN ACCORDANCE WITH THE BEST AVAILABLE INFORMATION. COMPLETENESS AND CORRECTNESS THEREOF IS NOT GUARANTEED. IT SHALL BE THE RESPONSIBILITY OF THE CONTRACTOR TO CONFER WITH THE UTILITY COMPANIES INVOLVED IN ORDER TO SECURE THE MOST ACCURATE INFORMATION AVAILABLE AS TO UTILITY LOCATION. THE FAILURE TO SHOW ON THE DRAWINGS ANY EXISTING UTILITIES SHALL NOT RELIEVE THE CONTRACTOR OF HIS RESPONSIBILITY OF DETERMINING THE LOCATION OF THESE UTILITIES. NO CONSTRUCTION AROUND OR ADJACENT TO UTILITIES SHALL BE DONE WITHOUT "MISS UTILITY" (1-800-282-8555) 72 HOURS PRIOR TO EXCAVATION TO HAVE UNDERGROUND UTILITY CABLES LOCATED AND MARKED.
- THE CONTRACTOR SHALL TAKE NECESSARY PRECAUTIONS TO PROTECT THE EXISTING UTILITIES AND MAINTAIN UNINTERRUPTED SERVICE, AND ANY DAMAGE DONE TO THEM DUE TO THEIR NEGLIGENCE SHALL BE IMMEDIATELY AND COMPLETELY REPAIRED TO THE OWNERS SATISFACTION AT THE CONTRACTORS SOLE EXPENSE. IF THE CONTRACTOR RELIES ON THE UTILITY LOCATIONS SHOWN HEREON, HE DOES SO AT HIS OWN RISK AND WILL NOT BE ENTITLED TO ADDITIONAL COMPENSATION DUE TO TIME DELAYS FROM SAID RELIANCE.
- CONTRACTOR SHALL COORDINATE WITH THE UTILITY OWNER WHEN PERMANENT OR TEMPORARY RELOCATION OF THE EXISTING UTILITY IS REQUIRED. THIS SHALL INCLUDE BUT NOT BE LIMITED TO STORM DRAINS, INLETS, PAVEMENT, SIGNALS, CONDUITS, CABLES, PIPING, GUY WIRES, POLES, AND OVERHEAD FACILITIES, ETC., REGARDLESS OF OWNERSHIP.
- THE CONTRACTOR SHALL PROTECT ALL ADJOINING AND NEARBY BUILDINGS, EQUIPMENT, ALL UTILITIES, STRUCTURES, FENCES, TREES, SHRUBBERY, ETC. FROM DAMAGE DUE TO EXCAVATION, DEMOLITION, AND CONSTRUCTION, DURING THE ENTIRE CONSTRUCTION PERIOD. ANY DAMAGE CAUSED DIRECTLY OR INDIRECTLY WILL BE REPAIRED AT THE CONTRACTOR'S EXPENSE.
- IT SHALL BE THE CONTRACTOR'S RESPONSIBILITY TO PROTECT ALL INSTALLED UTILITIES UNTIL THE COMPLETION OF CONSTRUCTION. PIPES WITH SHALLOW COVER SHALL BE PROTECTED FROM DAMAGE BY CONSTRUCTION MACHINERY WITH ADEQUATE TEMPORARY COVER. PIPING, MANHOLE AND VAULT OPENINGS SHALL BE PROTECTED TO PREVENT SEDIMENT, DEBRIS AND WATER FROM ENTERING THE FACILITIES. THE CONTRACTOR SHALL CLEAN AND DISPOSE OF ALL MATERIAL TO THE SATISFACTION OF THE CITY SHOULD THESE MATERIALS BE ALLOWED TO ENTER THE INSTALLED FACILITIES OR EXISTING FACILITIES WHERE CONNECTIONS EXIST.
- ALL EXCAVATION FOR STRUCTURES AND PIPE TRENCHES SHALL BE KEPT FREE OF WATER UNTIL BACKFILL IS PROPERLY TAMPED IN PLACE TO FINISH GRADE. SPECIAL ATTENTION IS CALLED TO THE NEED TO PROPERLY REMOVE SEDIMENT FROM DEWATERING ACTIVITIES WITHOUT THE USE OF EXCAVATED SEDIMENT PITS. THE CONTRACTORS ATTENTION IS CALLED TO THE NEED TO ACHIEVE DEWATERING ACTIVITY AND SEDIMENT REMOVAL WITH PORTABLE DEWATERING BOXES OR OTHER SIMILAR DEVICES WHILE MINIMIZING THE DISRUPTION TO BUSINESSES AND ADJACENT GROUND AREAS. WATER DISCHARGED FROM DEWATERING / SEDIMENT REMOVAL DEVICES SHALL BE CONVEYED TO EXISTING DRAINAGE FACILITIES SUCH AS INLETS AND DRAINAGE DITCHES SO AS TO PREVENT HAZARDOUS CONDITIONS. THE CONTRACTOR SHALL BE RESPONSIBLE FOR ALL DAMAGE AND INJURY WHICH OCCURS AS A RESULT OF IMPROPER DEWATERING / SEDIMENT REMOVAL ACTIVITIES.
- IT SHALL BE THE CONTRACTOR'S RESPONSIBILITY TO OBTAIN THE APPROVAL AND ACCEPTANCE OF THE PUMP STATION, BY CITY OF LEWES, UPON COMPLETION OF CONSTRUCTION.
- SANITARY SEWER SEPARATION FROM WATER MAINS SHALL BE 10 FEET HORIZONTAL, 18 INCH VERTICAL MINIMUM AT ALL WATER AND SEWER CROSSINGS, UNLESS OTHERWISE NOTED.
- CONTRACTOR TO DISPOSE OF ALL HAZARDOUS WASTE ENCOUNTERED DURING EXCAVATION IN ACCORDANCE WITH LOCAL, STATE AND FEDERAL REGULATIONS. THE DISPOSAL SITE MUST BE A PERMITTED SITE.
- IT SHALL BE THE CONTRACTOR'S RESPONSIBILITY TO DISPOSE OF ALL EXCAVATED MATERIAL NOT USED IN THE PROJECT CONSTRUCTION AT AN APPROVED UPLAND DISPOSAL SITE HAVING AN APPROVED EROSION AND SEDIMENT CONTROL PLAN.

ELECTRICAL NOTES:

- ALL WORK SHALL BE DONE IN STRICT COMPLIANCE WITH THE REQUIREMENTS / REGULATIONS OF THE FOLLOWING CODES / AGENCIES / UTILITIES:
 - THE NATIONAL ELECTRICAL CODE (NEC)
 - LOCAL BUILDING AND FIRE CODES
 - ALL LOCAL, STATE, AND FEDERAL SAFETY REGULATIONS
 - ALL LOCAL, STATE, AND FEDERAL ENVIRONMENTAL PROTECTION REGULATIONS
 - DESIGN SAFETY STANDARDS FOR ELECTRICAL SYSTEMS (OSHA)
 - ANY OTHER PUBLIC AGENCIES HAVING JURISDICTION
 - DELAWARE ELECTRICAL CO-OP
 - ARTESIAN WASTEWATER COMPANY
 - THE LOCATION OF TRANSFORMER AND METER TO BE DECIDED IN CONJUNCTION WITH POWER COMPANY/SUPPLIER
- THE CONTRACTOR SHALL BE RESPONSIBLE TO INSURE "ON THE JOB" SAFETY FOR HIS EMPLOYEES. IN ADDITION, THE CONTRACTOR SHALL BE RESPONSIBLE TO INSURE THAT HIS WORK SHALL BE PERFORMED IN A MANNER THAT SHALN PROVIDE SAFE CONDITIONS FOR OTHER PERSONS EMPLOYED ON THE PROJECT, EMPLOYEES OF THE OWNER, AND ALL OTHER PERSONS HAVING AUTHORIZED OR UNAUTHORIZED ACCESS TO THE WORK AND THE PUBLIC.
- THE ELECTRICAL DRAWINGS DO NOT INDICATE ALL OF THE EXISTING EQUIPMENT, DEVICES, WIRING, STRUCTURES, PIPING, ETC., EITHER EXPOSED OR CONCEALED. PRIOR TO COMMENCING CONSTRUCTION THE CONTRACTOR SHALL OBTAIN OR VERIFY THE EXACT LOCATION OF ALL THE EXISTING ITEMS THAT AFFECT THE WORK
- THE ELECTRICAL DRAWINGS ARE DIAGRAMMATIC IN NATURE AND INDICATE THE GENERAL ARRANGEMENT OF THE VARIOUS SYSTEMS AND THE APPROXIMATE / RELATIVE LOCATIONS OF THE EQUIPMENT / DEVICES / ITEMS. IT SHALL BE THE RESPONSIBILITY OF THE CONTRACTOR TO DETERMINE THAT THERE IS ADEQUATE SPACE AT THE LOCATIONS INDICATED FOR ALL THE EQUIPMENT / DEVICES / ITEMS PRIOR TO INSTALLATION OF SAME.
- ALL WORK SHALL BE GROUNDED AS INDICATED ON THE DRAWINGS AND / OR AS REQUIRED IN ACCORDANCE WITH THE NATIONAL ELECTRICAL CODE.
- THE CONTRACTOR SHALL USE WHERE APPROPRIATE A MECHANICAL STRUT SYSTEM (1-5/8" CHANNEL WIDTH SERIES) AS A MEANS OF SUPPORT FOR THE INSTALLATION AND MOUNTING OF EQUIPMENT / DEVICES.
- ALL EQUIPMENT SHALL BE INSTALLED AND WIRED IN STRICT COMPLIANCE WITH THE REQUIREMENTS AND RECOMMENDATIONS OF THE EQUIPMENT MANUFACTURER.
- UPON COMPLETION OF THE INSTALLATION THE CONTRACTOR SHALL BALANCE THE LOAD ON ALL PARTS OF THE DISTRIBUTION SYSTEM.
- THE CONTRACTOR SHALL BE RESPONSIBLE TO REPAIR OR REPLACE ALL DAMAGE CAUSED BY THE INSTALLATION OF EQUIPMENT / DEVICES / MATERIALS AT THE PROJECT. REPAIRS OR REPLACEMENT WORK SHALL CONFORM TO HE EXISTING CONDITIONS.
- THE CONTRACTOR SHALL BE RESPONSIBLE FOR ANY / ALL CORE DRILLING AS REQUIRED FOR THE COMPLETION OF HIS WORK. COORDINATE CORE DRILLING WITH REBAR PLACEMENT AND/OR REINFORCEMENT ELEMENTS OF THE PRECAST STRUCTURES TO AVOID DAMAGE TO THESE ITEMS.
- CONTRACTOR SHALL PROVIDE ARC FLASH LABELS FOR ALL EQUIPMENT BEING INSTALLED. LABELS SHALL INDICATE HAZARD LEVEL AND PPE REQUIREMENTS AS REQUIRED BY NFPA 70E AND IEEE 1584

SPECIAL NOTE:

THE WET WELL SHALL BE CONSIDERED CLASSIFIED AREAS - CLASS I, DIVISION1, GROUPS C AND D. ALL EQUIPMENT AND WIRING INSTALLED IN THESE AREAS SHALL MEET THE REQUIREMENTS FOR THIS TYPE OF HAZARDOUS LOCATION.

ALL DIMENSIONS MUST BE VERIFIED BY CONTRACTOR AND OWNER MUST BE NOTIFIED OF ANY DISCREPANCIES BEFORE PROCEEDING WITH WORK



WHITE'S POND PRESERVE
TM: 335-8-1279.00
MONROE AVE EXTENDED
LEWES, DE 19958

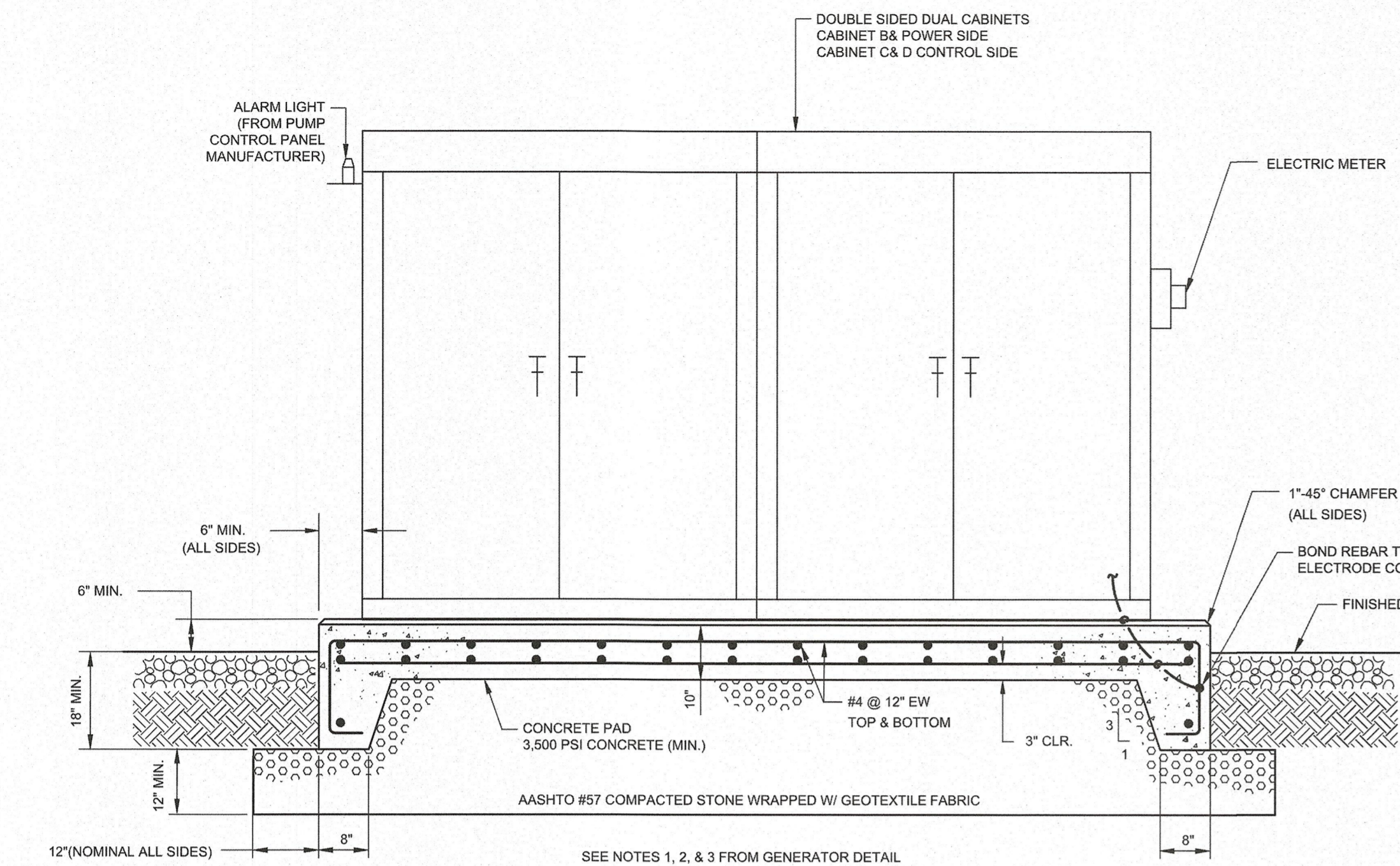
ELECTRICAL SITE PLAN

JTJ DE INVESTMENTS LLC
22261 WATERVIEW ROAD
LEWES, DE 19958

NO.	DATE	REVISIONS	BY

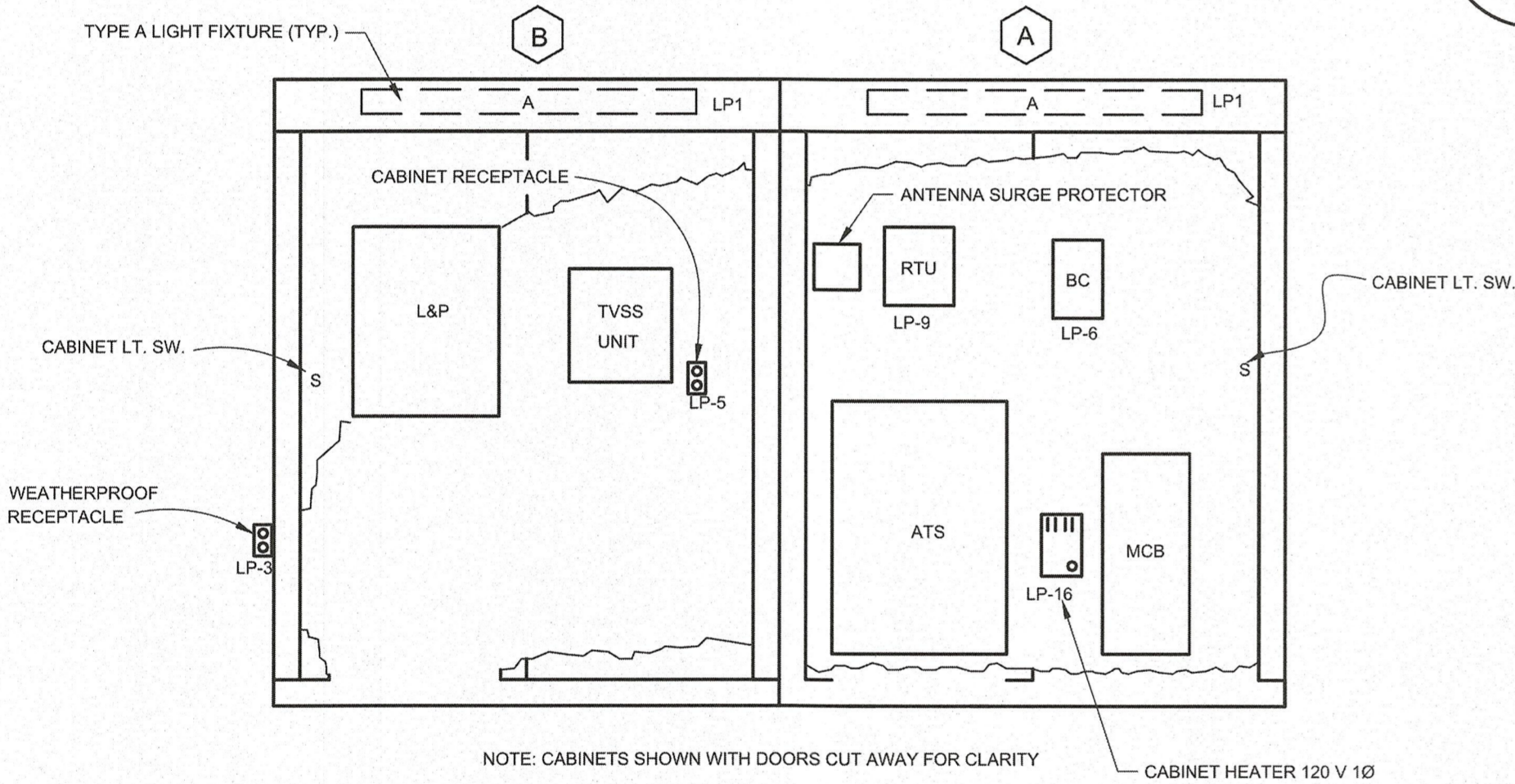
ALL DOCUMENTS PREPARED BY PENNONI ASSOCIATES ARE INSTRUMENTS OF SERVICE IN RESPECT OF THE PROJECT. THEY ARE NOT INTENDED OR REPRESENTED TO BE SUITABLE FOR REUSE BY OWNER OR OTHERS ON THE EXTENSIONS OF THE PROJECT OR ON ANY OTHER PROJECT. ANY REUSE WITHOUT WRITTEN VERIFICATION OR ADAPTATION BY PENNONI ASSOCIATES FOR THE SPECIFIC PURPOSE INTENDED WILL BE AT OWNERS SOLE RISK AND WITHOUT LIABILITY OR LEGAL EXPOSURE TO PENNONI ASSOCIATES, AND OWNER SHALL INDEMNIFY AND HOLD HARMLESS PENNONI ASSOCIATES FROM ALL CLAIMS, DAMAGES, LOSSES AND EXPENSES ARISING OUT OF OR RESULTING THEREFROM.

PROJECT	GRNCL22001
DATE	2024-11-01
DRAWING SCALE	1"=5'
DRAWN BY	RWS
APPROVED BY	AMD

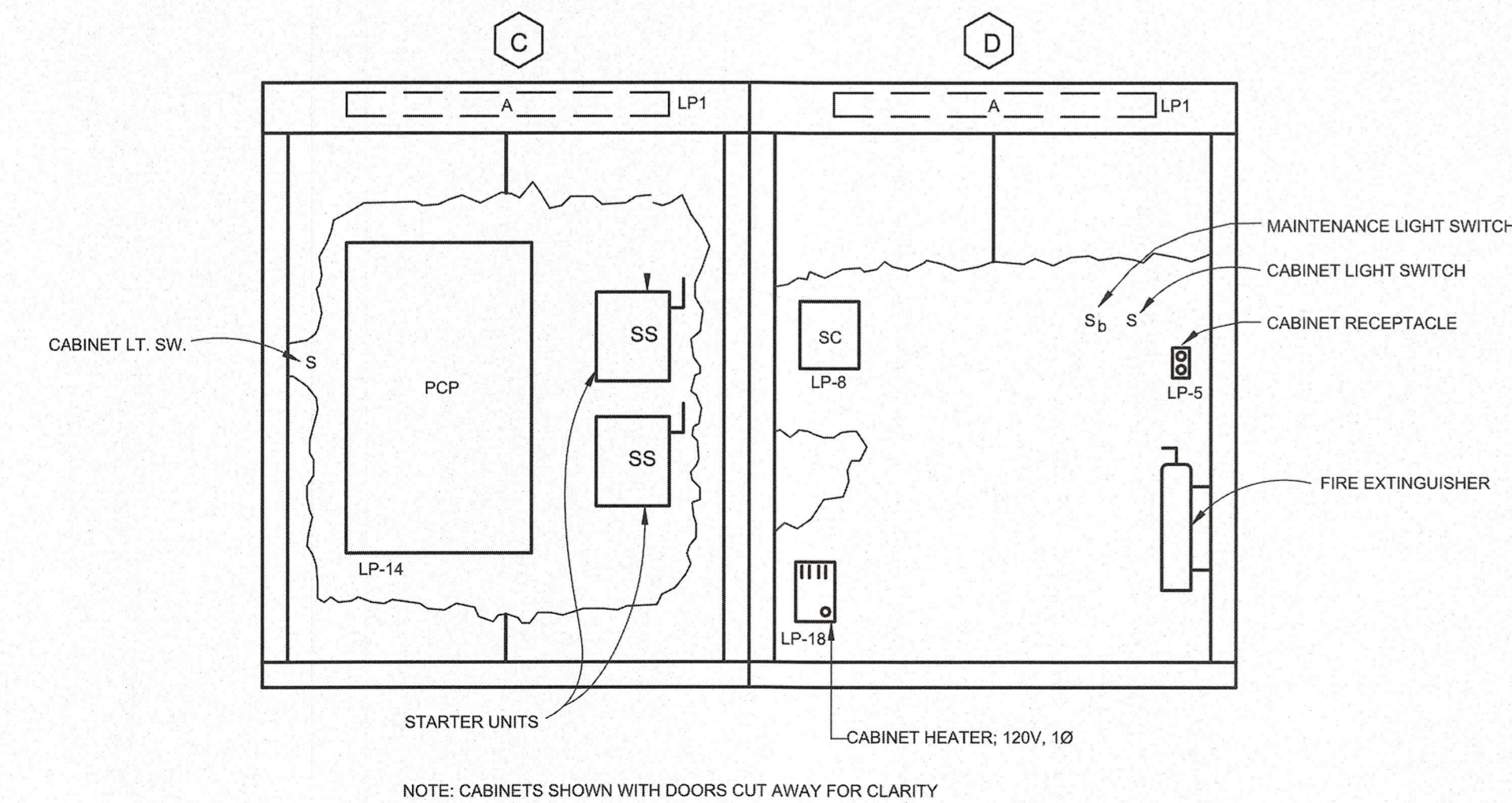


DETAIL- ELECTRICAL EQUIPMENT CABINET FOUNDATION
NOT TO SCALE

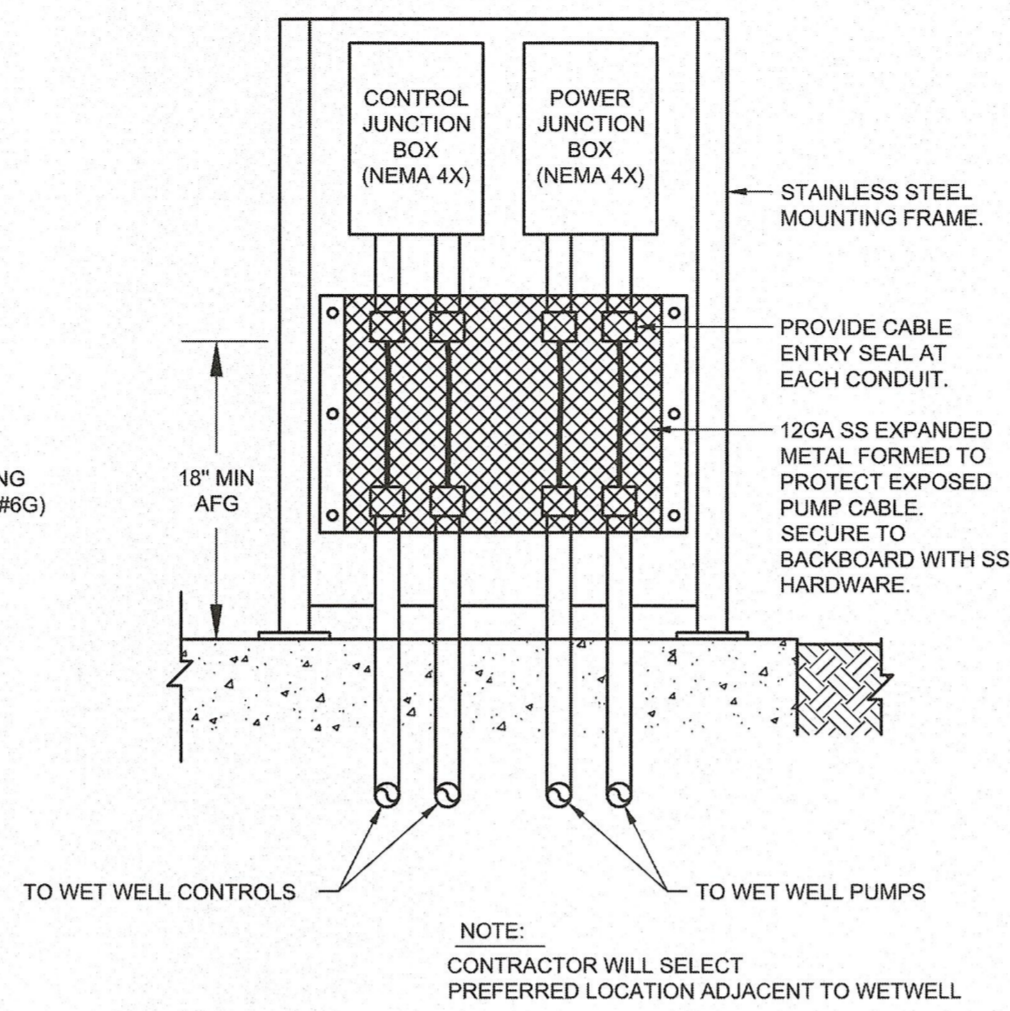
1
PS1705A



A ELEVATION - POWER SIDE
NOT TO SCALE

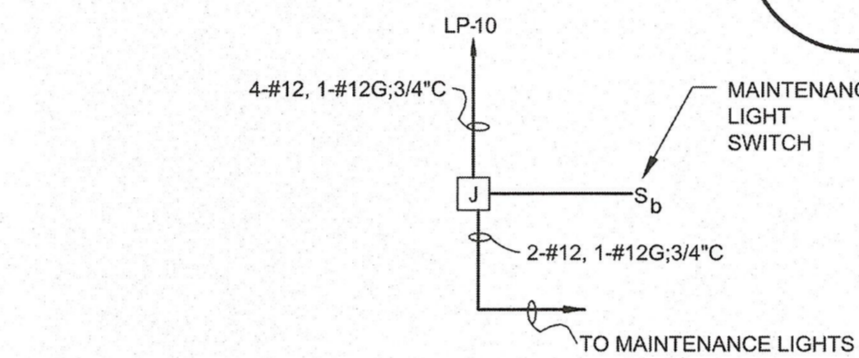


B ELEVATION - CONTROL SIDE
NOT TO SCALE



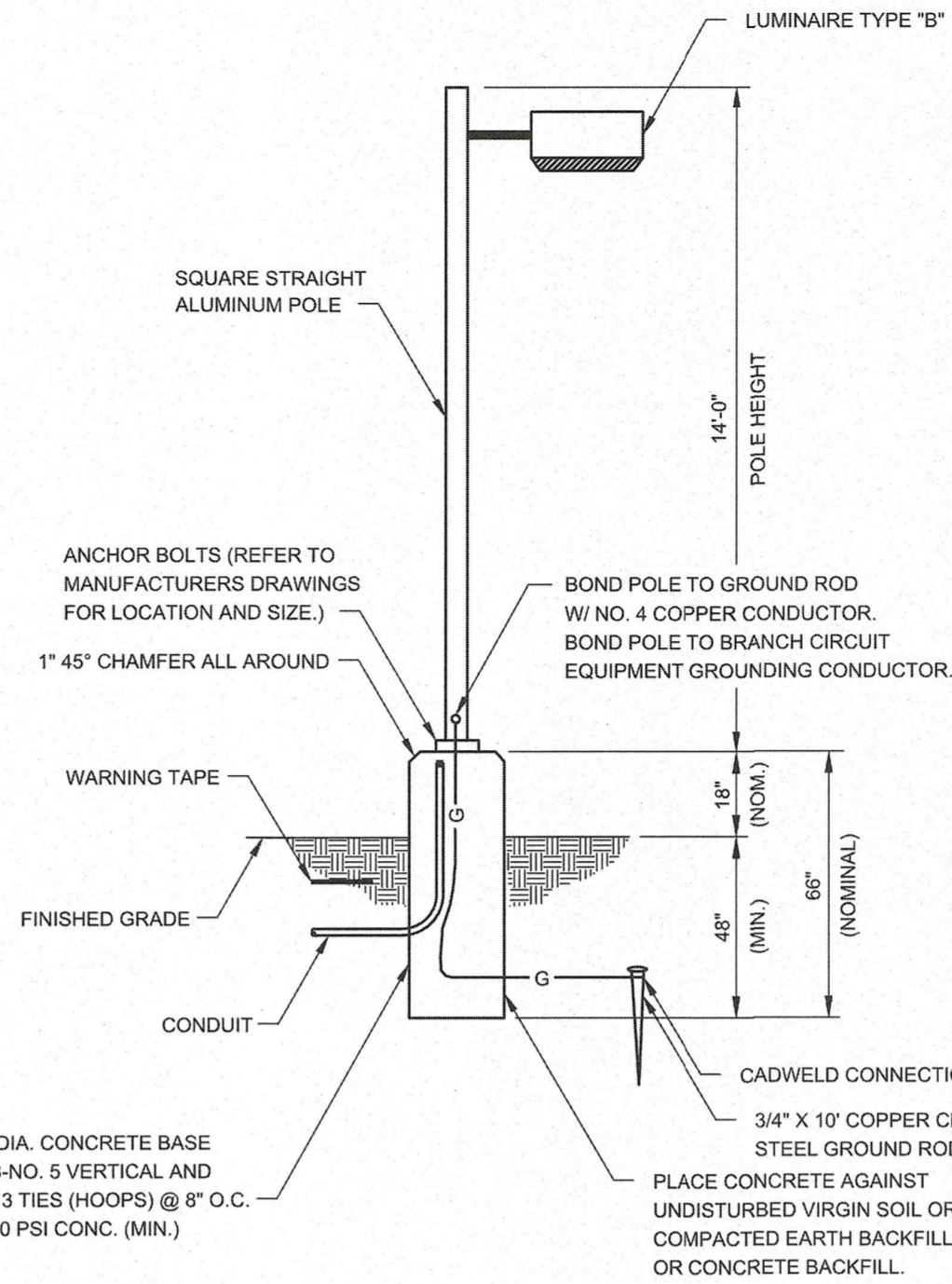
DETAIL- TYPICAL CONDUIT TRANSITION
NOT TO SCALE

2
PS1705A



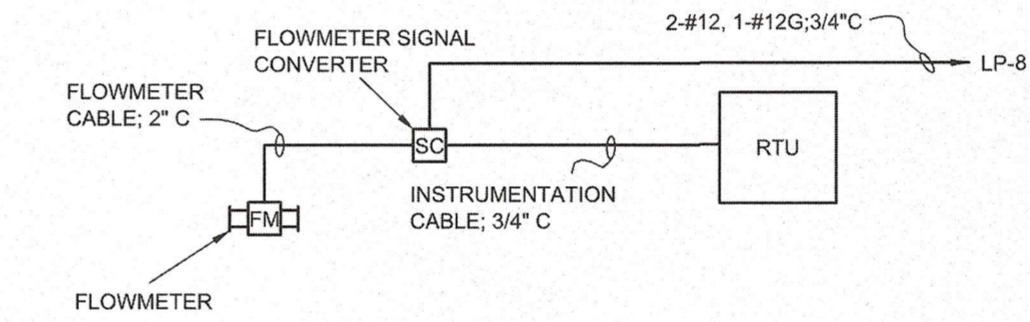
DETAIL- SITE LIGHTING SCHEMATIC
NOT TO SCALE

5
PS1705A



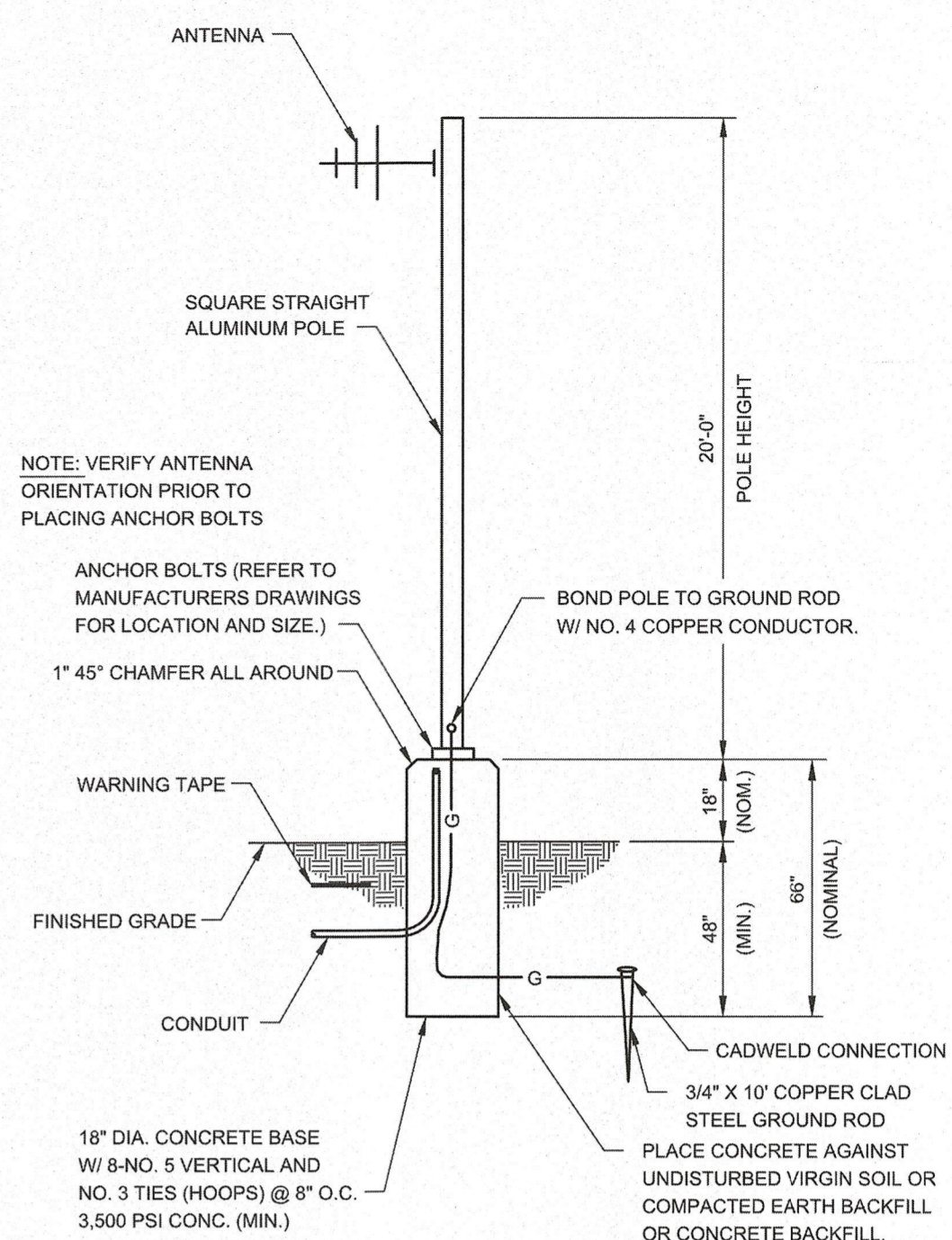
DETAIL- LIGHT POLE
NOT TO SCALE

3
PS1705A



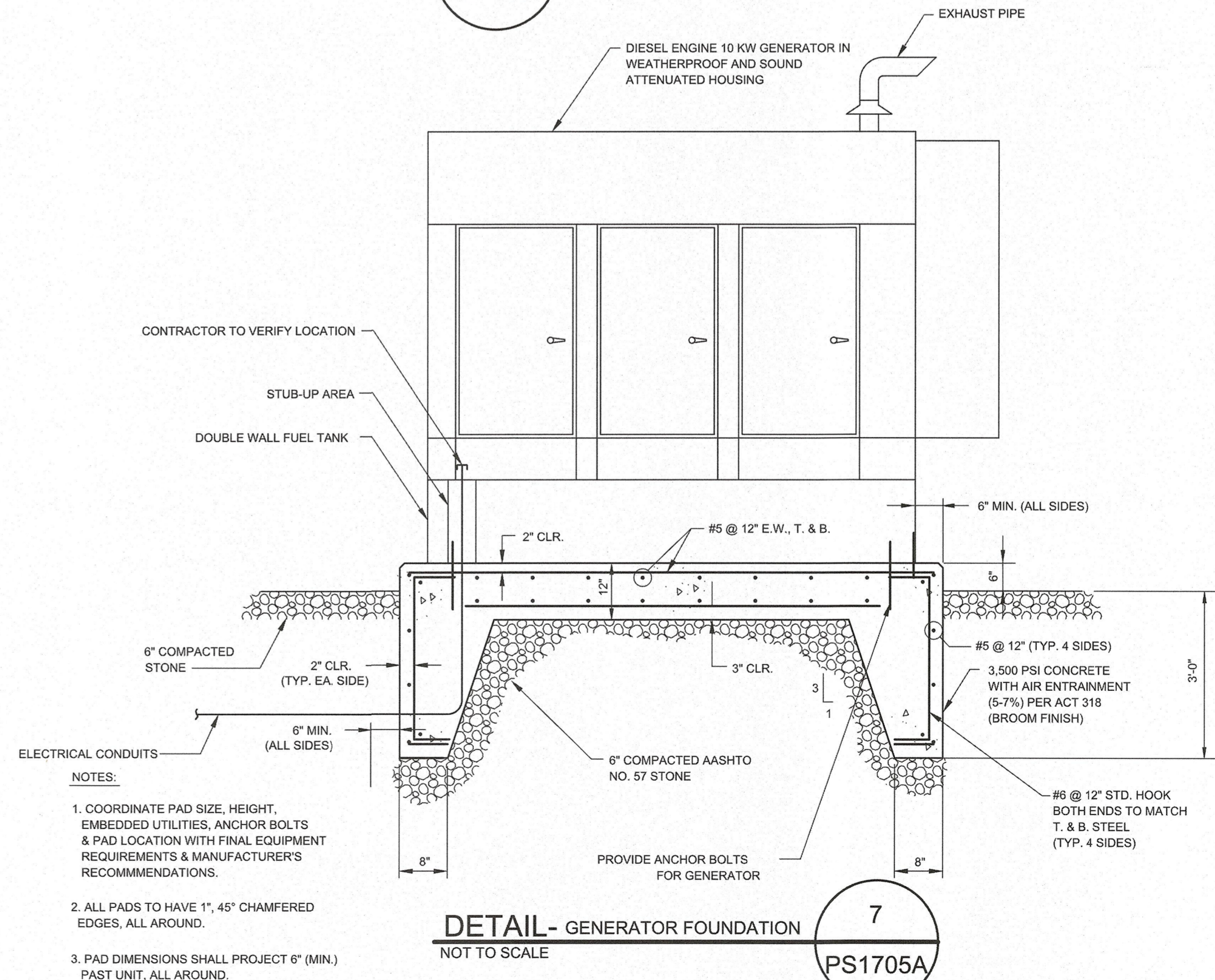
DETAIL- FLOWMETER SCHEMATIC DIAGRAM
NOT TO SCALE

6
PS1705A



DETAIL- ANTENNA POLE
NOT TO SCALE

4
PS1705A



DETAIL- GENERATOR FOUNDATION
NOT TO SCALE

7
PS1705A

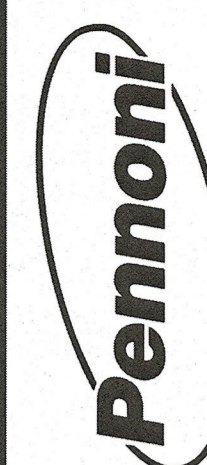
WHITE'S POND PRESERVE

TM: 25-21-00-25-00 25-20-00-42-00
MONROE AVE EXTENDED
LEWES, DE 19958

ELECTRICAL DETAILS

JTJ DE INVESTMENTS LLC
22261 WATERVIEW ROAD
LEWES, DE 19958

ALL DIMENSIONS MUST BE VERIFIED BY CONTRACTOR
AND OWNER MUST BE NOTIFIED OF ANY
DISCREPANCIES BEFORE PROCEEDING WITH WORK



PENNONI ASSOCIATES INC.
18072 Davidson Drive
Milton, DE 19968
T 302.684.8030 F 302.684.8054

ALL DOCUMENTS PREPARED BY PENNONI ASSOCIATES
ARE INSTRUMENTS OR SERVICE IN RESPECT OF THE
PROJECT. THEY ARE NOT INTENDED OR REPRESENTED
TO BE SUITABLE FOR REUSE BY OWNER OR OTHERS ON
THE EXTENSIONS OF THE PROJECT OR ON ANY OTHER
PROJECT. ANY REUSE WITHOUT WRITTEN VERIFICATION
OR AUTHORIZATION BY PENNONI ASSOCIATES FOR THE
SPECIFIC PURPOSE INTENDED WILL BE AT OWNERS
SOLE RISK AND WITHOUT LIABILITY OR LEGAL
EXPOSURE TO PENNONI ASSOCIATE, AND OWNER SHALL
INDemnIFY AND HOLD HARMLESS PENNONI ASSOCIATES
FROM ALL CLAIMS, DAMAGES, LOSSES AND EXPENSES
ARISING OUT OF OR RESULTING THEREFROM.

PROJECT	GRNCL22001
DATE	2024-11-01
DRAWING SCALE	AS SHOWN
DRAWN BY	RWS
APPROVED BY	AMD

PS1706A

SHEET 7 OF 8

