

LEGEND		
	EXISTING	PROPOSED
PROPERTY LINE	---	---
EASEMENT LINE	---	---
SETBACK LINE	---	---
CONCRETE MONUMENT FOUND	CMF □	N/A
IRON PIPE FOUND	IPF ●	N/A
BENCH MARK	ELEV. ▲	N/A
SPOT ELEV. LABEL	X 19.25	19.25
MAJOR CONTOUR	---10---	---10---
MINOR CONTOUR	-----7-----	-----7-----
ROAD CENTERLINE	---	---
EDGE OF CONCRETE	---	---
EDGE OF PAVEMENT	---	---
EDGE OF GRAVEL	---	N/A
PAINT STRIPE	---	---
CURB	---	---
PAVEMENT HATCH	▨	▨
CONCRETE HATCH	▩	▩
BUILDING OUTLINE	---	---
SIDEWALK	---	---
SIDEWALK HATCH	▨	▨
FENCE LINE	-x-	N/A
SIGN	⊕	N/A
EDGE OF WETLAND	---\ /---	N/A
FLOODPLAIN	---	N/A
STORM MANHOLE	⊙	⊙
CURB INLET	▩	▩
YARD INLET	▩	▩
STORM PIPE	▨	▨
RIP RAP	▩	▩
SANITARY MANHOLE	⊙	⊙
SANITARY CLEANOUT	○	○
SANITARY PIPE	SS	SS
WATER VALVE	WV	WV
WATER PIPE	-W-	-W-
FIRE HYDRANT	⊕	⊕
OVERHEAD ELECTRIC	-E-	N/A
UNDERGROUND ELECTRIC	---E---	N/A
UNDERGROUND TELECOMMUNICATIONS	---TC---	N/A
UTILITY POLE	⊕	N/A
LIGHT POLE	⊕	⊕
DECIDUOUS TREE	⊕	N/A
CONIFEROUS TREE	⊕	N/A
TREE LINE	---	---

# ROADWAY, STORM DRAIN, SEWER, WATER, & ESC

## FOR

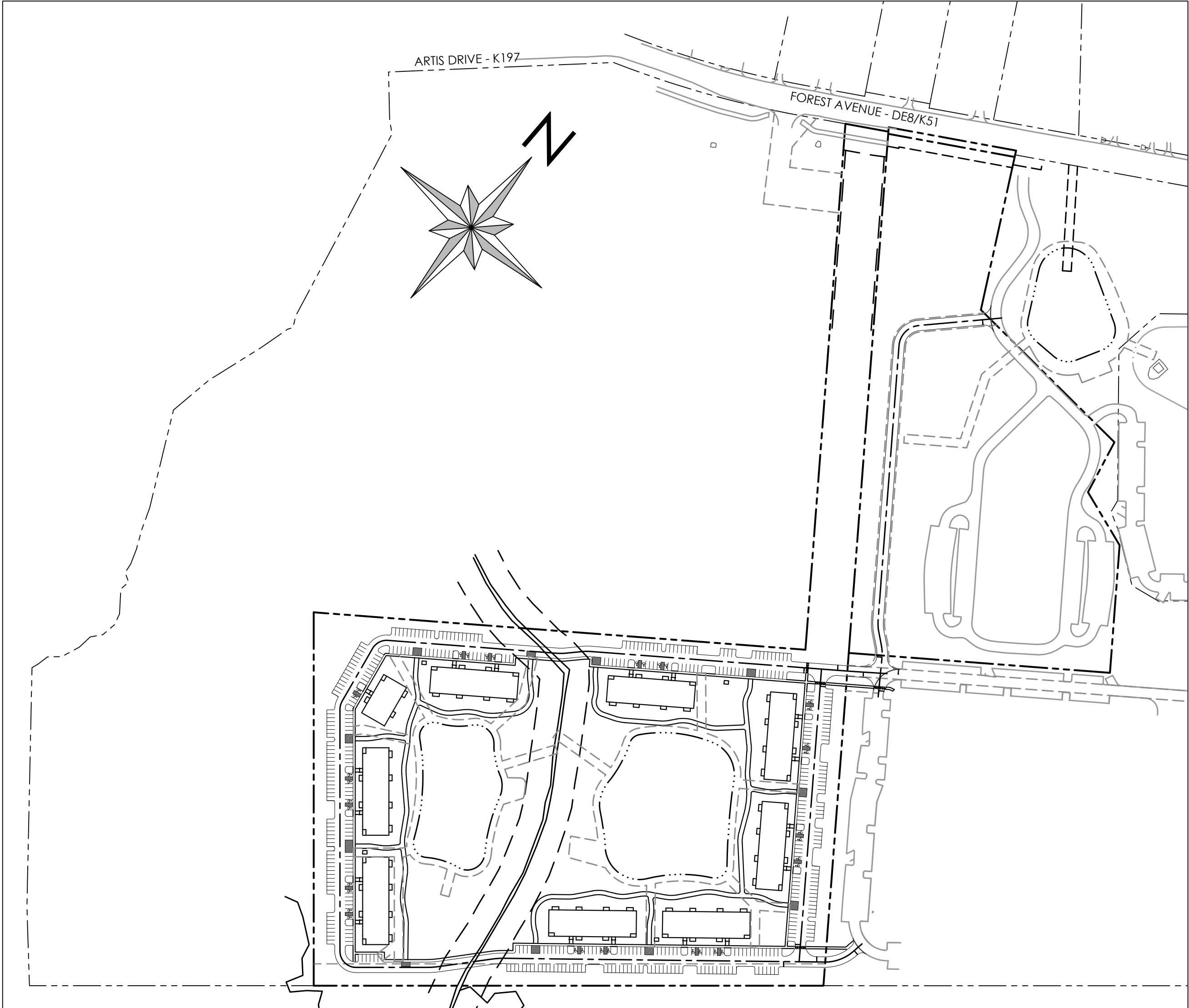
# LEANDER LAKES III

## EAST DOVER HUNDRED

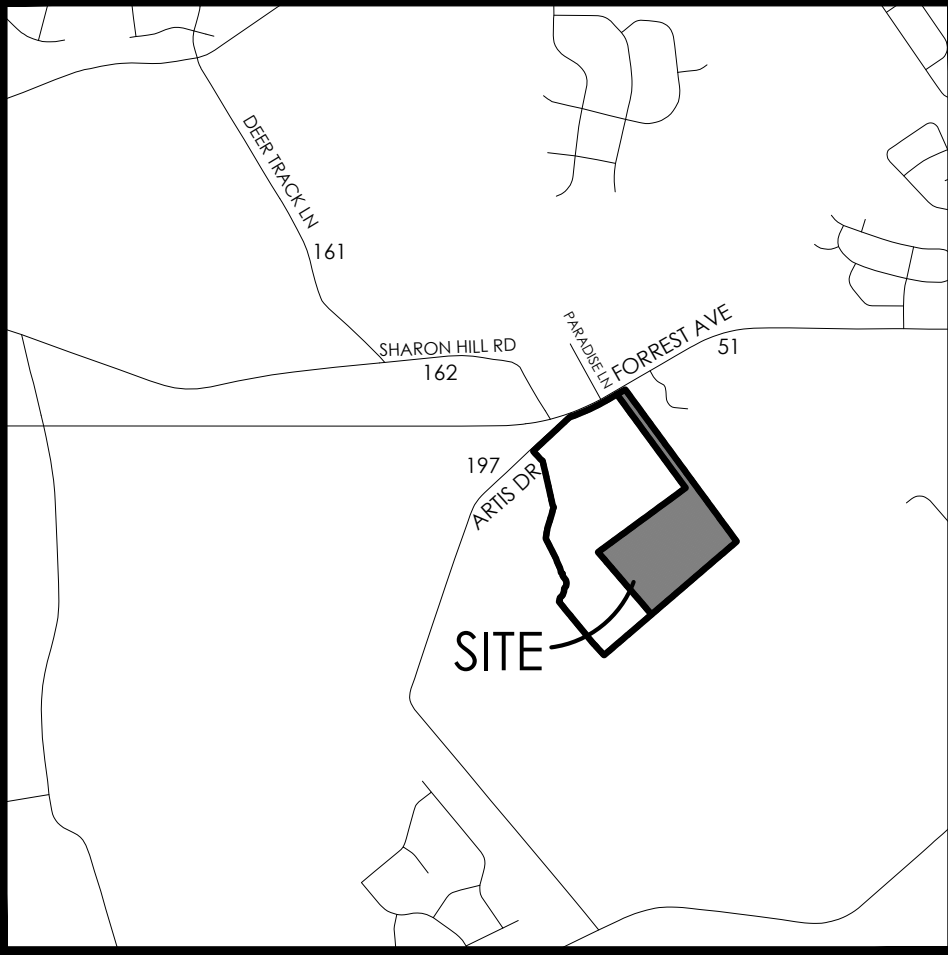
## KENT COUNTY, DELAWARE

## FOR

# LEANDER LAKES III, LLC



SITE  
1" = 200'



VICINITY MAP  
SCALE: 1" = 2,000'

### SITE DATA:

- OWNER: LEANDER LAKES III, LLC  
218 EAST MAIN STREET  
SALISBURY, MD 21801  
PHONE: 410.742.8151  
EMAIL: BRINNIE@BRINNIE.COM  
CONTACT: BLAIR RINNIE, CCIM, CPM
- ENGINEER: SOLUTIONS IPEM  
303 NORTH BEDFORD STREET  
GEORGETOWN, DE 19947  
PHONE: 302.297.9215  
EMAIL: JERIKSEN@SOLUTIONSIPEM.COM  
CONTACT: JIM ERIKSEN, PE
- WETLAND SCIENTIST: GEO-TECHNOLOGY ASSOCIATES, INC.  
3445-A BOX HILL CORPORATE CENTER DRIVE  
ABINGTON, MD 21009  
PHONE: 410.515.9446  
CONTACT: MATTHEW JENNETTE
- TAX MAP:  
205-07500-01-0601-000  
SITE AREA = 25.00 ± ACRES
  - PROPOSED USE: MULTIPLEX DWELLINGS  
200 MULTIPLEX DWELLING UNITS  
DENSITY = 200 UNITS / 25 AC = 8.00 UNITS/AC
  - PARKING:  
REQUIRED:  
2.25 UNITS PER DWELLING (2 PER UNIT + 0.25 FOR VISITOR SPACE)  
200 x 2.25 = 450 SPACES  
  
PROPOSED: 451 SPACES
  - EXISTING ZONING:  
RM-2 & CO-1
  - PROPOSED ZONING:  
RM-10 & CO-1 (25,000+ ACRES)
  - PROPOSED BUILDING SETBACKS:  
FRONT: 30'  
SIDE: 10' MIN., 30' TOTAL  
REAR: 20'  
MAXIMUM BUILDING HEIGHT: 35'
  - FLOOD ZONE:  
THE PROPERTY IS LOCATED WITHIN FLOOD ZONE X (UNSHADED) - AREAS DETERMINED TO BE OUTSIDE THE 0.25 ANNUAL CHANCE FLOOD PLAIN, PER FIRM MAP NUMBER 10001C0164H, EFFECTIVE DATE MAY 5, 2003
  - WATER SUPPLY:  
CITY OF DOVER
  - SANITARY SEWER:  
CITY OF DOVER
  - SOIL CLASSIFICATIONS:  
FgcA - FALLINGSTON LOAMS, HYDROLOGIC SOIL GROUP: C/D  
HbB - HAMBROOK SANDY LOAM - HYDROLOGIC SOIL GROUP: B  
Ua & Ub - UNICORN LOAM - HYDROLOGIC SOIL GROUP: C  
WgcA - WOODSTOWN LOAM - HYDROLOGIC SOIL GROUP: C
  - TOPOGRAPHY AND BOUNDARY SHOWN HEREIN ARE AS PROVIDED BY SOLUTIONS IPEM LLC.

### RECORD SITE PLAN

- RP-1 - RECORD SITE COVER SHEET  
RP-2 - NOTES & CONDITION OF APPROVAL  
RP-3 - EXISTING CONDITIONS  
RP-4 - RECORD SITE PLAN A  
RP-5 - RECORD SITE PLAN B  
RP-6 - RECORD SIGHT DISTANCE  
RP-7 - EASEMENTS RECORD PLAN A  
RP-8 - EASEMENTS RECORD PLAN B  
RP-9 - RECREATIONAL SITE PLAN  
RP-10 - DETAILS  
L-1 - LANDSCAPING AND GRADING PLAN A  
L-2 - LANDSCAPING AND GRADING PLAN B

### NOTES:

- ALL ON-SITE STREETS ARE PRIVATE AND SHALL BE MAINTAINED BY THE OWNER. THE PERPETUAL MAINTENANCE OF THE STREETS SHALL BE BY THE OWNER.
- STORMWATER MANAGEMENT AND STORM DRAINAGE SHALL BE IN ACCORDANCE WITH THE KENT COUNTY CONSERVATION DISTRICT AND DOVER ENGINEERING REQUIREMENTS. THE SITE IS TO BE TREATED BY MULTIPLE WET PONDS. MAINTENANCE OF THE ON-SITE STORMWATER MANAGEMENT FACILITIES AND STORM DRAINAGE SYSTEM SHALL BE BY THE OWNER. THE PERPETUAL MAINTENANCE OF THE ABOVE PROACTIVE SHALL BE BY THE OWNER.
- ALL OPEN SPACE, INCLUDING BUFFERS AND FOREST STRIPS, SHALL BE MAINTAINED BY THE OWNER.
- POTABLE WATER, SANITARY SEWER, STORM DRAINAGE, STREET PAVEMENT SHALL BE CONSTRUCTED BY DEVELOPER. PHASING OF IMPROVEMENTS SHALL BE PER COUNTY AND CONSERVATION DISTRICT REQUIREMENTS.
- THE PROPERTY IS NOT LOCATED WITHIN ANY TRANSPORTATION IMPROVEMENT DISTRICTS.
- THIS PROPERTY IS IN THE VICINITY OF AN ESTABLISHED AGRICULTURAL PRESERVATION DISTRICT IN WHICH NORMAL AGRICULTURAL USES AND ACTIVITIES HAVE BEEN AFFORDED THE HIGHEST PRIORITY USE STATUS. IT CAN BE ANTICIPATED THAT SUCH AGRICULTURAL USES MAY NOW OR IN THE FUTURE INVOLVE NOISE, DUST, MANURE OR OTHER ODORS. THE USE OF AGRICULTURAL CHEMICALS AND NIGHT TIME FARM OPERATIONS, THE USE AND ENJOYMENT OF THIS PROPERTY IS EXPRESSLY CONDITIONED ON ACCEPTANCE OF ANY ANNOYANCE OR INCONVENIENCE WHICH MAY RESULT FROM SUCH NORMAL AGRICULTURAL USES AND ACTIVITIES.
- LEANDER LAKES III, LLC WILL OWN, OPERATE, AND MAINTAIN THE ON-SITE COMMUNITY WASTEWATER SYSTEM. THE ON-SITE COMMUNITY WASTEWATER PLAN WILL BE OPERATED UNDER THE PUBLIC SERVICE COMMISSION.
- LEANDER LAKES III, LLC WILL OWN, OPERATE AND MAINTAIN THE ON-SITE WATER DISTRIBUTION SYSTEM.
- SOLID WASTE COLLECTION SERVICES WILL BE PERFORMED BY A PRIVATE WASTE HAULER.

### CONSTRUCTION PLANS

- |  |                                |   |  |
|--|--------------------------------|---|--|
| 1 - COVER SHEET  | 17 - DETAILS 1                 | 32 - WATER DETAILS 2                                | 48 - POST CONSTRUCTION SWM PLAN - WET POND 2 |
| 2 - GENERAL NOTES                                      | 18 - DETAILS 2                 | 33 - EROSION AND SEDIMENT CONTROL COVER             | 49 - POST CONSTRUCTION SWM PLAN - WET POND 3 |
| 3 - EXISTING CONDITIONS                                | 19 - DETAILS 3                 | 34 - STORMWATER AND BULK EARTHWORK PHASING PLAN     | 50 - PHASING PLAN                            |
| 4 - INDEX PLAN   | 20 - DETAILS 4                 | 35 - PRE-CONSTRUCTION SITE SWM PLAN                 | L-1 - LANDSCAPING PLAN A                     |
| 5 - SITE DIMENSIONS PLAN A                             | 21 - RECREATION SITE PLAN      | 36 - CONSTRUCTION SITE SWM PLAN                     | L-2 - LANDSCAPING PLAN B                     |
| 6 - SITE DIMENSIONS PLAN B                             | 22 - SANITARY SEWER INDEX      | 37 - STORM DRAIN WETLAND CONSTRUCTION DETAILS       |  |
| 7 - ROAD AND STORM DRAIN PLAN A                        | 23 - SANITARY SEWER PLAN A     | 38 - HEADWALL DETAILS                               |  |
| 8 - ROAD AND STORM DRAIN PLAN B                        | 24 - SANITARY SEWER PORFILES 1 | 39 - EROSION & SEDIMENT CONTROL NOTES AND DETAILS 1 |  |
| 9 - ROAD PROFILES 1                                    | 25 - SANITARY SEWER DETAILS 1  | 40 - EROSION & SEDIMENT CONTROL NOTES AND DETAILS 2 |  |
| 10 - ROAD PROFILES 2                                   | 26 - SANITARY SEWER DETAILS 2  | 41 - EROSION & SEDIMENT CONTROL NOTES AND DETAILS 3 |  |
| 11 - DETAILED INTERSECTION GRADING                     | 27 - SANITARY SEWER DETAILS 3  | 42 - EROSION & SEDIMENT CONTROL NOTES AND DETAILS 4 |  |
| 12 - STORM DRAIN PROFILES 1                            | 28 - FIRE MARSHAL PLAN         | 43 - EROSION & SEDIMENT CONTROL NOTES AND DETAILS 5 |  |
| 13 - STORM DRAIN PROFILES 2                            | 29 - WATER PLAN A              | 44 - EROSION & SEDIMENT CONTROL NOTES AND DETAILS 6 |  |
| 14 - STORM DRAIN PROFILES 3, STRUCTURE AND PIPE CHARTS | 30 - WATER PROFILES 1          | 45 - EROSION & SEDIMENT CONTROL NOTES AND DETAILS 7 |  |
| 15 - BULK GRADING PLAN A                               | 31 - WATER DETAILS 1           | 46 - POST CONSTRUCTION SITE SWM                     |  |
| 16 - BULK GRADING PLAN B                               |                                | 47 - POST CONSTRUCTION SWM PLAN - WET POND 1        |  |

### WETLAND STATEMENT

GEO-TECHNOLOGY ASSOCIATES, INC. (GTA) HAS CONDUCTED A FIELD REVIEW WITHIN THE BOUNDARIES OF THIS SITE TO EVALUATE THE PRESENCE OR ABSENCE OF POTENTIAL STATE AND FEDERAL JURISDICTIONAL WETLANDS FOR THE PURPOSES OF DELAWARE WETLAND AND SUBAQUEOUS LAND REGULATIONS AND SECTION 404 OF THE CLEAN WATER ACT. GTA'S REVIEW WAS CONDUCTED IN GENERAL ACCORDANCE WITH TECHNIQUES AND CRITERIA PROVIDED IN THE 1987 CORPS OF ENGINEERS WETLAND DELINEATION MANUAL AND THE REGIONAL SUPPLEMENT TO THE CORPS OF ENGINEERS WETLAND DELINEATION MANUAL: ATLANTIC AND GULF COASTAL PLAIN REGION (VERSION 2.0). IN GTA'S PROFESSIONAL OPINION, THERE ARE NO WATERS OF THE U.S., INCLUDING WETLANDS, PRESENT ON THE SUBJECT PROPERTY.

MATTHEW JEANNETTE  
GEO-TECHNOLOGY ASSOCIATES, INC.

### ENGINEER'S CERTIFICATION

I HEREBY CERTIFY THAT THESE DRAWINGS HAVE BEEN PREPARED UNDER MY SUPERVISION.

### DEVELOPER'S CERTIFICATION

THE DEVELOPER, LEANDER LAKES III, LLC, HEREBY CERTIFIES THAT THESE DRAWINGS HAVE BEEN APPROVED.

BLAIR RINNIE, CCIM, CPM DATE

APPROVED, KENT COUNTY ENGINEER AGREEMENT #XXXX

DIANA T. GOLT, PE, DATE

6/26/25

NO.	DATE	DESCRIPTION
5	10/31/24	ADDRESSED AGENCIES COMMENTS
6	12/5/24	ADDRESSED AGENCIES COMMENTS
7	1/16/25	SEWER E-ONE GRINDER PUMP REVISION
8	4/10/25	ADDRESSED AGENCIES COMMENTS
9	6/3/25	ADDRESSED DHS ODW COMMENTS
10	6/26/25	ADDRESSED AGENCIES COMMENTS

COVER SHEET

for

## LEANDER LAKES III

CITY OF DOVER, KENT COUNTY, DELAWARE  
Prepared for: Leander Lakes III, LLC

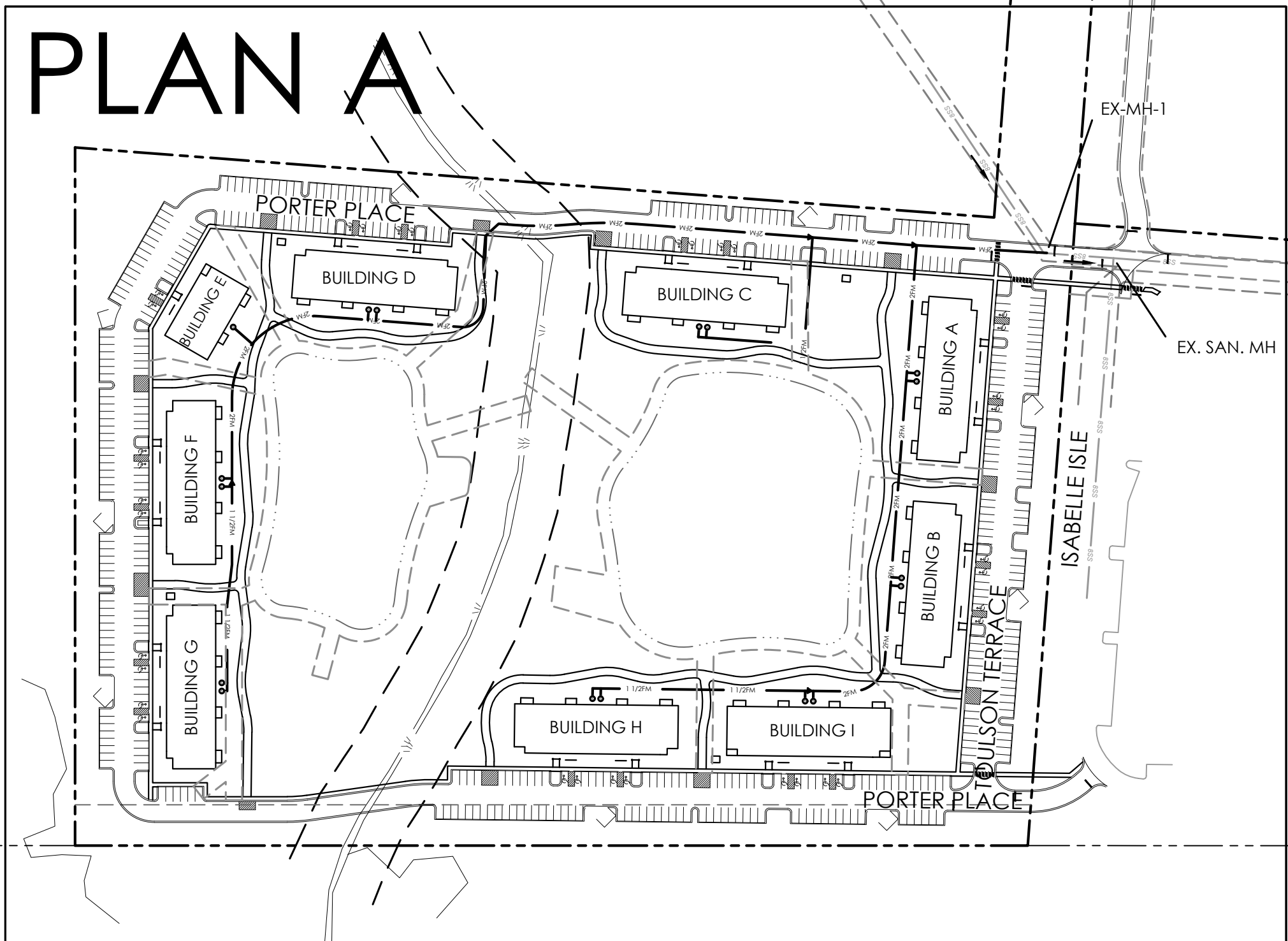
Date:	7-5-2023
Job Number:	G22066
Scale:	AS NOTED
Drawn By:	JPR
Designed By:	JPR
Approved By:	JRE

Sheet No.:

1

File Name:  
G22066-Cover.dwg





SANITARY SEWER STRUCTURE CHART				
NAME	RIM ELEV(FT)	INVERT-IN ELEV(FT) (1)	INVERT-IN ELEV(FT) (2)	INVERT-OUT ELEV(FT)
EX-MH-1	50.58	43.54	42.24	42.24

SITE DATA:

OWNER:	LEANDER LAKES III, LLC 218 EAST MAIN STREET SALISBURY, MD 21801 CONTACT: BLAIR RINNIER, CCIM, CPM
ENGINEER:	SOLUTIONS IPBM 303 NORTH BEDFORD STREET GEORGETOWN, DE 19947 PHONE: 302.297.9215 CONTACT: JIM ERIKSEN, PE
WETLAND SCIENTIST:	GEO-TECHNOLOGY ASSOCIATES, INC. 3445-A BOX HILL CORPORATE CENTER DRIVE ABINGTON, MD 21009 PHONE: 410.515.9446 CONTACT: MATTHEW JENNETTE

- TAX MAP:  
2-05-07500-01-0601-000  
SITE AREA = 25.00 ± ACRES
- PROPOSED USE: RM-10 & COZ-1  
200 MULTIPLEX DWELLING UNITS
- EXISTING ZONING:  
RM-2 & COZ-1
- FLOOD ZONE:  
THE PROPERTY IS LOCATED WITHIN FLOOD ZONE X (UNSHADED) -  
AREAS DETERMINED TO BE OUTSIDE THE 0.2% ANNUAL CHANCE  
FLOOD PLAIN, PER FIRM MAP NUMBER 10001C0164H, EFFECTIVE DATE  
MAY 5, 2003
- WATER SUPPLY:  
CITY OF DOVER
- SANITARY SEWER:  
CITY OF DOVER
- TOPOGRAPHY AND BOUNDARY SHOWN HEREIN ARE AS PROVIDED BY  
SOLUTIONS IPEM LLC.

# SEWER PLAN SHEETS

- 22 - SANITARY SEWER INDEX  
23 - SANITARY SEWER PLAN A  
24 - SANITARY SEWER PORFILES 1  
25 - SANITARY SEWER DETAILS 1  
26 - SANITARY SEWER DETAILS 2  
27 - SANITARY SEWER DETAILS 3

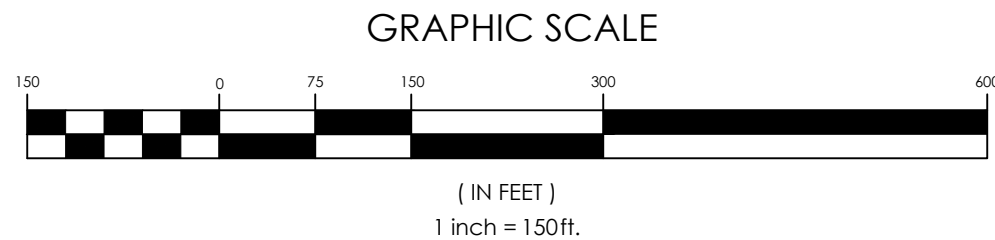
NOTES:

1. THE SANITARY SEWER AND FORCE MAIN SHALL COMPLY WITH ALL LOCAL, STATE, AND FEDERAL REGULATIONS.
2. LEANDER LAKES III, LLC WILL OWN, OPERATE, AND MAINTAIN THE ON-SITE COMMUNITY WASTEWATER SYSTEM. THE ON-SITE COMMUNITY WASTEWATER PLAN WILL BE OPERATED UNDER THE PUBLIC SERVICE COMMISSION.
3. AN AGREEMENT FOR OPERATION AND MAINTENANCE OF THE ON-SITE COMMUNITY WASTEWATER SYSTEM MUST BE MAINTAINED IN ACCORDANCE WITH DNRCC REQUIREMENTS.
4. TOTAL NUMBER OF GRINDER PUMPS ASSOCIATED WITH THESE PLANS IS 17.
5. ANY EXISTING SANITARY SEWER LINES NOT TO BE UTILIZED BY THE PROPOSED FACILITY MUST BE PROPERLY ABANDONED AT THE MAINS IN ACCORDANCE WITH THE CITY OF DOVER DEPARTMENT OF WATER & WASTEWATER SPECIFICATIONS AND REQUIREMENTS.
6. PART II, CHAPTER 180, ARTICLE III, SECTIONS 180-10 OF THE CODE OF KENT COUNTY REQUIRES THAT "NO PERSON SHALL DISCHARGE OR CAUSE TO BE DISCHARGED ANY STORMWATER, SURFACE WATER, UNCONTAMINATED GROUNDWATER, ROOF RUNOFF, SUBSURFACE DRAINAGE, UNCONTAMINATED NONCONTRACT COOLING WATER OR UNPOLLUTED INDUSTRIAL PROCESS WATERS TO ANY SANITARY SEWER," THIS SHALL INCLUDE SURFACE WATER, CONDENSATE, COOLING WATER OR SIMILAR LIQUID WASTES, EXCLUSIVE OF SEWAGE." THE CONTRACTOR, DEVELOPER, OWNER AND DESIGNERS SHALL ENSURE DURING CONSTRUCTION THAT NO ILLEGAL DISCHARGES TO THE SANITARY SEWER SYSTEM ARE CREATED WITH THE SIT IMPROVEMENTS.

## OFFSITE PUMP STATION UPGRADES:

THE FOLLOWING UPGRADES ARE REQUIRED TO THE DOWNSTREAM PUMP STATION AT THE NEW DOVER HIGH SCHOOL.

TWO (2) SMITH & LOVELESS MODEL 4B2X STAR ONE VACUUM PRIMED ROTATING ASSEMBLY, WITH XPEI SUPER CLOG-RESISTANT MONO-PORT IMPELLER W/ 15HP, 1800 RPM, 3/60/208V ODP MOTOR W/ MOTOR CONTROLS.

A circular red ink seal for a Professional Engineer in the State of Delaware. The outer ring contains the text "JAMES R. ERIKSEN" at the top and "PROFESSIONAL ENGINEER" at the bottom. The inner circle contains the word "LICENSE" at the top and "DELAWARE" at the bottom. In the center, the license number "NO. 11265" is printed. A blue ink signature is written across the seal.

REVISIONS		
NO.	DATE	DESCRIPTION
5	10/31/24	ADDED AGENCIES COMMENTS
6	12/5/24	ADDED AGENCIES COMMENTS
7	1/16/25	SEWER E-ONE GRINDER PUMP REVISION
8	4/10/25	ADDED AGENCIES COMMENTS
9	6/3/25	ADDED DHS ODW COMMENTS
10	6/26/25	ADDED AGENCIES COMMENTS

SANITARY SEWER INDEX

---

for

**LEANDER LAKES III**

CITY OF DOVER, KENT COUNTY, DELAWARE

Prepared for: Leander Lakes III, LLC

Date:	7-5-2023
Job Number:	G22066
Scale:	1"=150'
Drawn By:	JPR
Designed By:	JPR
Approved By:	JRE



N/F  
CALVARY BAPTIST CHURCH OF DOVER DELAWARE, INC  
2-05-07500-01-0600-000

N/F  
LEANDER LAKES IV, LLC  
2-05-07500-01-0500-000  
PB 109/24

4. MH  
 .47  
 =41.91  
 JT =41.8  
 =9.66'

EX. SAN. MH  
RIM=51.47  
INV. IN =41.91  
/ INV. OUT =41.8  
Depth=9.66'

EX-MH-1  
RIM=50.58  
INV. IN =43.54(REDUCER)  
INV. IN =42.24(EX-MH-2)  
INV. OUT =43.44/  
Depth=7.14'

EX. SAN. MH  
RIM=51.47  
INV. IN =41.91  
/ INV. OUT =41.8  
Depth=9.66'

**solutions**  
Integrated Planning  
Engineering & Management Ltd

303 North Bedford St  
Georgetown, DE 19857  
T. 302.297.9

3003 Merritt Mill Rd  
Salisbury, MD 21804  
T. 410.572.8

www.solutionsipem.com Copyright © 2012



6/26/2

REVISIONS		
NO.	DATE	DESCRIPTION
5	10/31/24	ADDRESSED AGENCIES COMMENTS
6	12/5/24	ADDRESSED AGENCIES COMMENTS
7	1/14/25	SEWER E-ONE GRINDER PUMP REVISION
8	4/10/25	ADDRESSED AGENCIES COMMENTS
9	6/3/25	ADDRESSED DHSS ODW COMMENTS

**SANITARY SEWER PLAN A**

---

for

## LEANDER LAKES III

CITY OF DOVER, KENT COUNTY, DELAWARE  
Prepared for: Jeander Lakes III, LLC

Date:	7-5-2023
Job Number:	G22066
Scale:	1"=50'
Drawn By:	JPR
Designed By:	JPR

Sheet No

23

File Name: G22066-Sewer.dwg

## NOTES

1. CONTRACTOR TO VERIFY DEPTH AND LOCATION OF ALL UTILITIES AT CONNECTIONS PRIOR TO INSTALLATION.
2. ALL ON-SITE SANITARY SEWER STRUCTURES AND PIPING SHALL BE PRIVATELY OWNED AND MAINTAINED.
3. EX-MH-1 IS PART OF THE APPROVED CALVARY BAPTIST CHURCH OF DOVER PROJECT AND IS ANTICIPATED TO BE INSTALLED BY OTHERS.
4. ALL SANITARY SEWER LATERALS SHALL BE 8" WITH A MINIMUM SLOPE OF 1%.

N/F  
FARM LANDS, LP  
2-00-07500-01-3200-00  
DB 237-279  
ZONED: AC

GRAPHIC SCALE

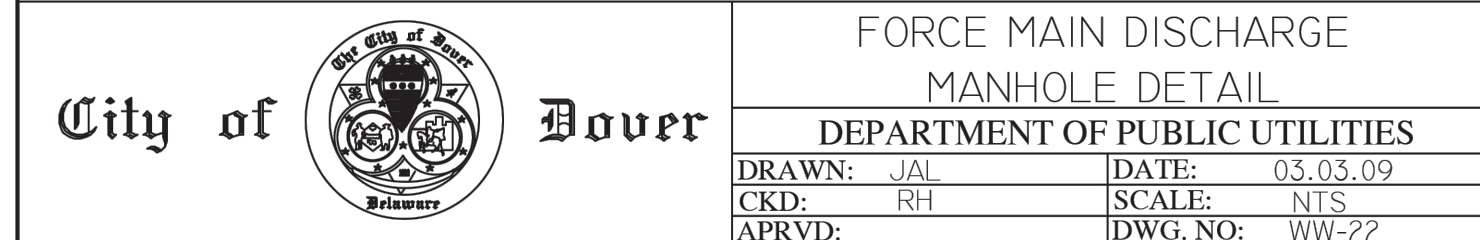
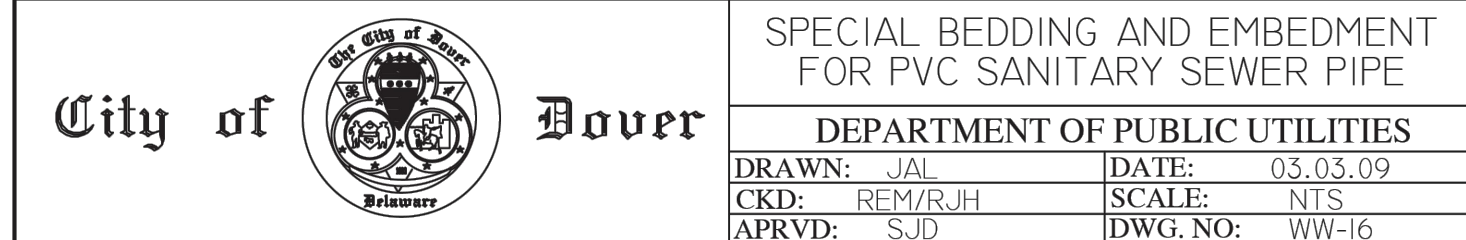
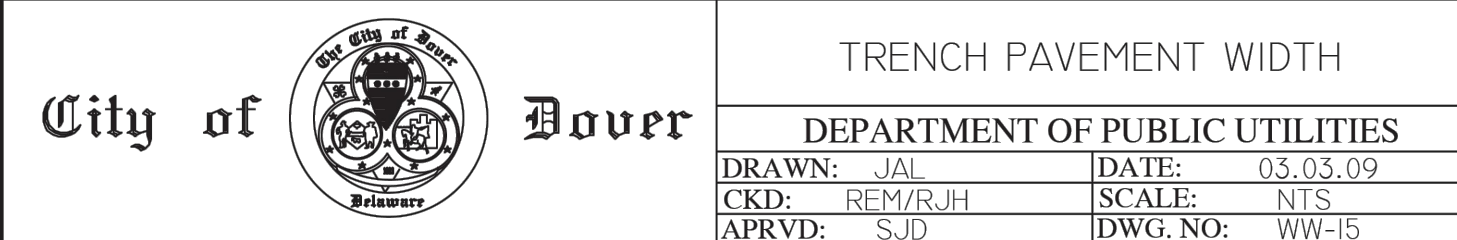
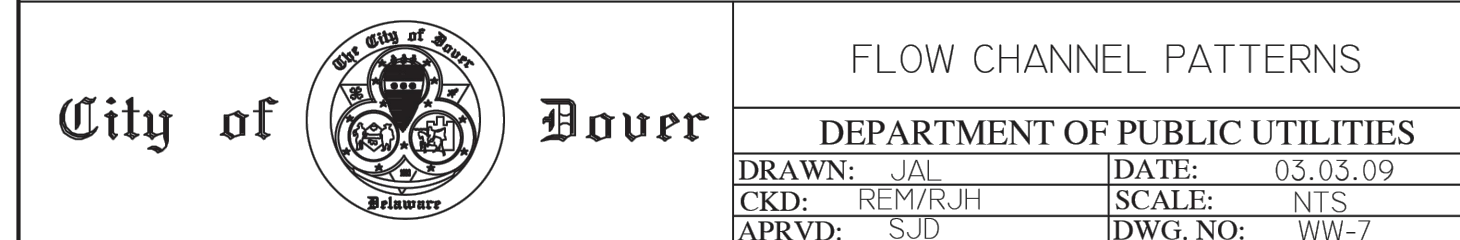


( IN FEET )  
1 inch = 50 ft.













The model WH482 or WR482 grinder pump station is a complete unit that includes: two grinder pumps, check valve, polyethylene tank, controls, and alarm panel. Designed for higher flow applications where local codes dictate higher storage requirements. The lower portion of the tank has a smaller diameter, tapered down to a dish-shaped bottom. The large tank access opening easily accommodates installation of the grinder pumps and equipment.

- Rated for flows of 3500 gpd (13,249 lpd)
- 486 gallons (1840 liters) of capacity
- Standard outdoor heights range from 75 inches to 122 inches

The WH482 is the "hardwired," or "wired," model where a cable connects the motor controls to the level controls through watertight penetrations.

The WR482 is the "radio frequency identification" (RFID), or "wireless," model that uses wireless technology to communicate between the level controls and the motor controls.

1 hp, 1,725 rpm, high torque, capacitor start, thermally protected, 120/240V, 60 Hz, 1 phase

4-inch inlet grommet standard for DWV pipe. Other inlet configurations available from the factory.

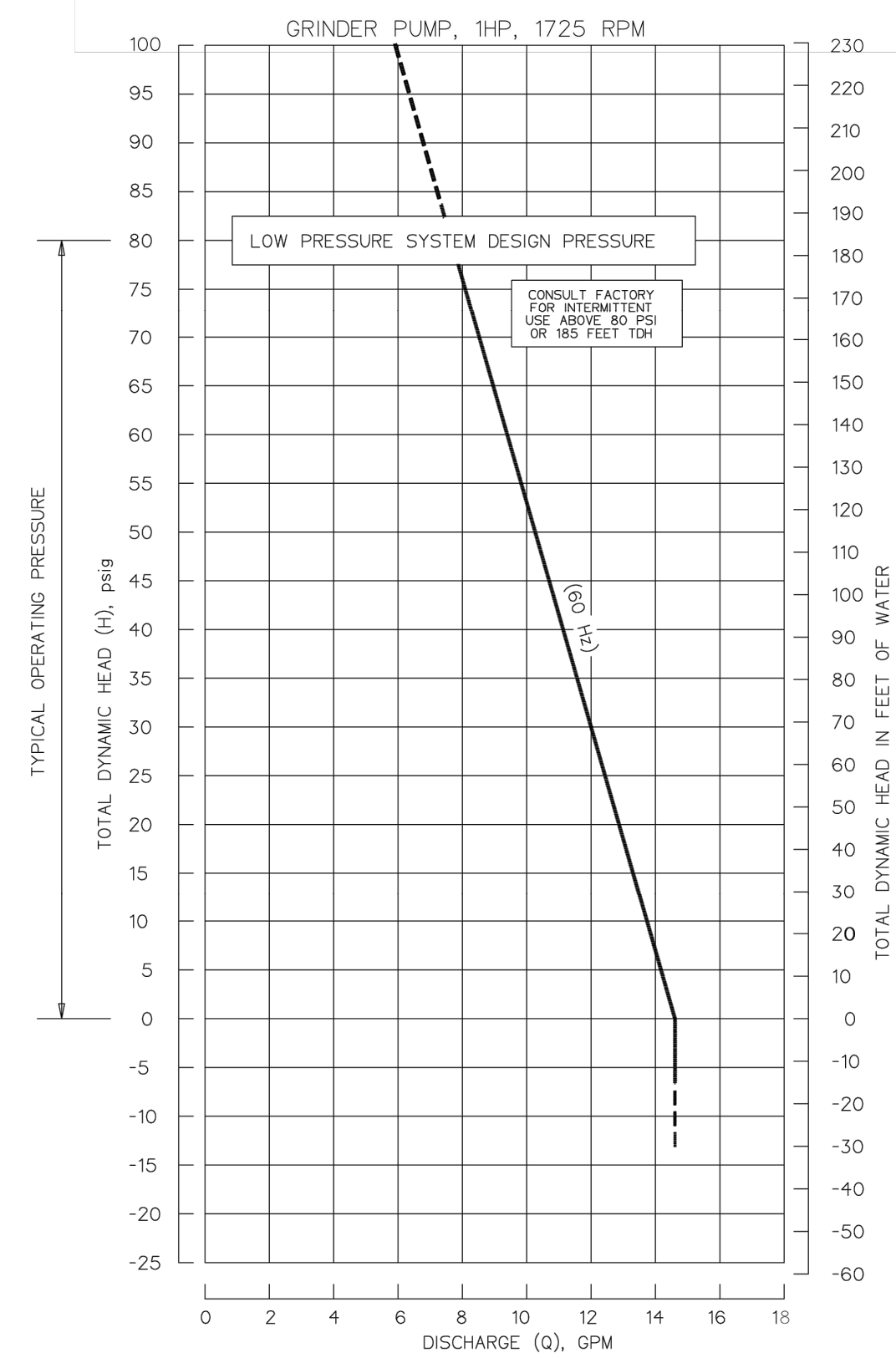
Pump discharge terminates in 1.25-inch NPT female thread. Can easily be adapted to 1.25-inch PVC pipe or any other material required by local codes.

15 gpm at 0 psig (0.95 lps at 0 m)  
11 gpm at 40 psig (0.69 lps at 28 m)  
7.8 gpm at 80 psig (0.49 lps at 56 m)

E/One recommends that the Uni-Lateral, E/One's own stainless steel check valve, be installed between the grinder pump station and the street main for added protection against backflow.

Alarm panels are available with a variety of options, from basic monitoring to advanced notice of service requirements.

The Remote Sentry is ideal for installations where the alarm panel may be hidden from view.



REVISIONS		
NO.	DATE	DESCRIPTION
5	10/31/24	ADDRESSED AGENCIES COMMENTS
6	12/5/24	ADDRESSED AGENCIES COMMENTS
7	1/16/25	SEWER E-ONE GRINDER PUMP REVISION
8	4/10/25	ADDRESSED AGENCIES COMMENTS
9	6/3/25	ADDRESSED DHHS ODW COMMENTS
10	6/26/25	ADDRESSED AGENCIES COMMENTS

LEANDER LAKES III  
CITY OF DOVER, KENT COUNTY, DELAWARE

Date:	7-5-2023
Job Number:	G22066
Scale:	N.T.S
Drawn By:	JPR
Designed By:	JPR
Approved By:	JRE

Sheet No.:

26

File Name:  
G22066-Sewer-Details.dwg



