

→

SUSSEX COUNTY, DELAWARE

GMB File No. 150078

1. SURVEY INFORMATION SHOWN ON THESE DRAWINGS PREPARED BY 301 INC. TOPOGRAPHY WAS PLANNED 03/12/1995 COMBINED WITH VERTICAL CONTROL- NGVD 1929 DATUM ESTABLISHED BY THE STATE OF DELAWARE. ADDITIONAL ON-SITE SURVEYING PERFORMED BY STEVE M. ADKINS LAND SURVEYING, LLC, SEPTEMBER 24, 2014 AND APRIL 2025.
2. EXISTING UTILITIES ARE SHOWN ACCORDING TO THE BEST AVAILABLE INFORMATION. THE CONTRACTOR SHALL VERIFY THROUGH TEST PILING, THE LOCATIONS, SIZE, AND INVERT ELEVATIONS OF ALL UNDERGROUND UTILITIES AS REQUIRED TO GIVE TIMELY ADVANCE NOTICE TO ENGINEERS OF ANY CONFLICT BETWEEN EXISTING AND NEW WORK.
3. THE CONTRACTOR SHALL NOTIFY MISS UTILITY (1-800-282-8555) AND SUSSEX COUNTY 48 HOURS PRIOR TO EXCAVATION TO HAVE UNDERGROUND UTILITIES MARKED. THE CONTRACTOR SHALL NOTIFY ALL UTILITY OWNERS PRIOR TO ANY EXCAVATION.
4. THE CONTRACTOR SHALL PROVIDE STAKEOUT SURVEY NECESSARY FOR INSTALLATION OF UTILITY WORK AND PERTINENTANCES AND DETERMINATION OF RIGHT-OF-WAY AND PROPERTY LINES, INCLUDING LINE AND GRADE.
5. ALL CONSTRUCTION MUST BE DONE IN COMPLIANCE WITH THE OCCUPATIONAL SAFETY AND HEALTH ACT, LATEST EDITION, AND ALL RULES AND REGULATIONS THERETO.
6. THE CONTRACTOR SHALL KEEP EXISTING UTILITIES IN OPERATION DURING CONSTRUCTION.
7. ANY DISTURBED AREAS OUTSIDE THE RIGHT-OF-WAY SHALL BE RESTORED TO THEIR ORIGINAL CONDITION IMMEDIATELY.
8. THE CONTRACTOR SHALL NOTIFY THE FOLLOWING TWO WEEKS PRIOR TO THE START OF CONSTRUCTION AND SHALL APPROPRIATE AND COORDINATE DURING ALL PHASES OF CONSTRUCTION:
 - DELOT
 - SUSSEX COUNTY ENGINEERING
 - TIDEWATER UTILITIES, INC.
 - DELAWARE ELECTRIC COOPERATIVE
 - VERIZON
 - GEORGE, MILES & BUHR, LLC
9. ALL WATER MAINS SHALL BE C-900 DR-18 PVC PILING AND CONSTRUCTED IN ACCORDANCE WITH TIDEWATER UTILITIES, INC. STANDARDS AND SPECIFICATIONS.
10. MAINTAIN A MINIMUM OF 3'-6" COVER OVER NEW WATER MAIN UNLESS NOTED OR SHOWN OTHERWISE.
11. MAINTAIN MINIMUM OF 10'-0" HORIZONTAL SEPARATION BETWEEN WATER AND SEWER MAINS.
12. MAINTAIN MINIMUM 18" VERTICAL SEPARATION BETWEEN THE OUTSIDE OF THE WATER MAIN AND THE OUTSIDE OF THE SEWER AT CROSSING. AT CROSSINGS ONE FULL LENGTH OF SEWER PIPE SHALL BE LOCATED SO BOTH JOINTS WILL BE AS FAR FROM THE WATER AS POSSIBLE. WHEN IT IS IMPOSSIBLE TO MAINTAIN THE MINIMUM SEPARATION, FOLLOW THE RECOMMENDED STANDARDS FOR WATER WORKS, 2007 EDITION, SECTION 8.6.4 EXCEPTION. THE DHSF OFFICE OF DRINKING WATER MUST SPECIFICALLY APPROVE ANY VARIANCE.
13. THE MAXIMUM BUILDING HEIGHT IS 52' AS DEFINED BY DSPFR PART 5, CHAPTER 5, SECTION 1.4.1..
14. FIRE LINE SIGNAGE TO BE PLACED AT EACH END OF FIRE ALONE THE CURB, EDGE OF PAVEMENT OR BUILDING LINE AND SPACED NO MORE THAN 150 FEET APART. SIGNS ARE TO BE LOCATED NO LESS THAN 6 FEET AND NO MORE THAN 8 FEET ABOVE THE PAVEMENT.
15. THE STEAMER CONNECTION OF ALL FIRE HYDRANTS SHALL BE SO POSITIONED AS TO BE FACING THE STREET.
16. WHERE LOCKBOX IS REQUIRED, CONTACT LOCAL FIRE CHIEF FOR ORDERING INFORMATION AND LOCATION.
17. ALL FIRE LINES, FIRE HYDRANTS AND FIRE DEPARTMENT CONNECTIONS SHALL BE MARKED IN ACCORDANCE WITH THE DELAWARE STATE FIRE PREVENTION REGULATIONS.
18. TOWN CENTER HAS ZERO FRONT YARD SETBACKS.
19. THE BUILDINGS ARE CONSTRUCTED OF WOOD AND STEEL FRAMES. ONLY THE BACK OF HOUSE AND STAGE IS SPRINKLERED. THE REMAINING ANCIALLY BUILDINGS ARE NOT SPRINKLERED.

1. WATER MAINS SHALL HAVE A MINIMUM 10' HORIZONTAL AND 18" VERTICAL SEPARATION FROM SANITARY SEWER. WHERE MINIMUM SEPARATION DISTANCES CAN NOT BE MAINTAINED, THE OFFICE OF DRINKING WATER MUST SPECIFICALLY APPROVE ANY VARIANCE SUPPORTED BY DATA FROM THE DESIGN ENGINEER.
2. WATER MAINS SHALL BE PROVIDED WITH A MINIMUM OF 3'-6" OF COVER.

This is a detailed black and white map of the Lighthouse area in San Francisco. The map shows a complex network of streets, including major roads like Double (Road 368), Church, and Bayside. Key landmarks and geographical features are labeled, such as The Refuge at Diricks Creek, Mulberry Pond, Mallard Lake, and Treasure Beach. The map also includes a legend on the right side, which lists 'LITTLE' and 'MALLARD' with corresponding numbers 1 through 6. The map is oriented with North at the top, and the Lighthouse is located in the center-right area.

Legend:

- LITTLE
- MALLARD
- 1
- 2
- 3
- 4
- 5
- 6

SCALE: 1" = 2000'

A map of the Chesapeake Bay region showing the four study sites. The map includes the states of Pennsylvania, New Jersey, Delaware, Maryland, and Virginia. Major cities like Philadelphia, Wilmington, Dover, Washington, Baltimore, Salisbury, and Ocean City are marked. The Chesapeake Bay and Delaware Bay are shown. The four study sites are indicated by numbered squares: 1 (near Philadelphia), 2 (near Baltimore), 3 (near Salisbury), and 4 (near Washington). A north arrow is present in the upper left corner.

SCALE: 1" = 20 MILES

C3.1	SANITARY SEWER PLAN
C3.2 - C3.3	SANITARY SEWER DETAILS
C3.4	FORCE MAIN DETAILS
C4.1	WATER DISTRIBUTION PLAN
C4.2	WATER DISTRIBUTION DETAILS
C5.0	UTILITY PROFILES SEWER
C5.1	UTILITY PROFILES WATER
C5.2	UTILITY PROFILES STORM
C6.0	MATERIALS SITE PLAN
C11.1 - C11.5	STORM DRAIN DETAILS

OWNER/DEVELOPER:	FREEMAN ARTS PAVILION, INC./JOSHUA M. FREEMAN FOUNDATION 31255 AMERICANA PARKWAY SELBYVILLE, DE 19975 CONTACT: PATTI GRIMES 302-436-3003
ENGINEER:	GEORGE, MILES & BUHR, LLC 206 WEST MAIN STREET SAUSBURY, MD 21801 CONTACT: STEVE MARSH 410-742-3115 (PHONE) 410-548-5790 (FAX)
TAX MAP #	T.M. ID 533-19.00, PARCELS 881.00, 864.00 & 866.00 DEED BOOKS 5384/530, 6259/59 & 5896/330 PLOT BOOK 327/8
ZONING CLASSIFICATION: PRESENT USE:	MR-RPC PERFORMING ARTS AMPHITHEATER
FLOOD INFORMATION:	ZONE X AND SPECIAL FLOOD HAZARD AREA ZONE AE 4 PER FEMA MAP 10005C063K, REVISED MARCH 16, 2015

PROPOSED TOTAL FREEMAN ARTS PAVILION AREA:	±5.71 ACRES
T.M. ID 533-19.00-881.00	±5.21 ACRES
T.M. ID 533-19.00-866.00	±0.50 ACRES
PARKING LOT AREA: T.M. ID 533-19.00-864.00	±3.22 ACRES
TOTAL BAYSIDE LAND AREA (INCLUDING GOLF):	± 931.24 ACRES

BUILDING RESTRICTIONS:
THERE ARE NO REQUIRED SETBACKS WITHIN THE GOLF FACILITY BOUNDARY OR WITHIN TOWN CENTER LOTS
MAXIMUM BUILDING HEIGHT 52' WITH NO LIVING SPACE ABOVE 42'. SEE PLANNING AND ZONING DESIGN
CONDITIONS DATED SEPTEMBER 23, 2003.

CONSERVATION AREAS ARE EASEMENTS APPROVED BY PLANNING AND ZONING DECEMBER 13, 2010 AND RECORDED JULY 15, 2010 PLOT BOOK 153, PAGE 77. THE PURPOSE OF THE CONSERVATION EASEMENT IS TO ASSURE THE EASEMENT AREA WILL BE MAINTAINED AND RETAINED FOREVER IN A NATURAL, SCENIC, AND OPEN SPACE CONDITION, AND TO PREVENT ANY USE OF THE EASEMENT AREA THAT WILL SIGNIFICANTLY IMPAIR OR INTERFERE WITH THE CONSERVATION VALUE OF THE AREA.

<u>REQUIRED PARKING:</u>	
FIXED SEATING =	730 SEATS
REMOVABLE SEATING =	200 SEATS
LAWN SEATING =	100 SEATS
VIP SEATING =	80 SEATS
<u>TOTAL</u>	<u>4000 SEATS</u>

$$1/4 \text{ SEATS } (1010/4) = 252.5 \text{ SPACES}$$

LAWN AREA 29,345/50 SF = 587 SPACES

TOTAL REQUIRED: 840 SPACES
HANDICAP PARKING (2% OF TOTAL)= 17 SPACES (18 PROVIDED)

PROVIDED PARKING: 845 SPACES TOTAL
18 HANDICAP SPACES
14 LARGE PASSENGER VEHICLE SPACES

PUBLIC SEWER: FENWICK ISLAND SANITARY SEWER DISTRICT
WATER SUPPLIER: TIDEWATER UTILITIES, INC.

DEVELOPER:	FREEMAN ARTS PAVILION, INC PATTI GRIMES 31255 AMERICANA PARKWAY SELBYVILLE, DELAWARE 19975 302-436-3003
ENGINEER:	GEORGE, MILES, & BUHR, LLC STEPHEN L. MARSH 208 WEST MAIN STREET SALISBURY, MD 21801 410-742-3115
LANDSCAPE ARCHITECT:	PARKER RODRIGUEZ DAN AVRIT 101 NORTH UNION STE. 320 ALEXANDRIA, VA 22314 703-548-5010
ARCHITECT:	SEA STUDIO DAVE SCHLECHT 401 SOUTH 2ND ST. STE. 302 PHILADELPHIA, PA 19147 410-553-5214

GMB
GEORGE, MILES & BUHR, LLC
ARCHITECTS & ENGINEERS
SAUSBURY • BALTIMORE • SEAFORD
206 WEST MAIN STREET
SAUSBURY, MARYLAND 21801
410-742-1115; FAX 410-548-5790
www.gmbnet.com

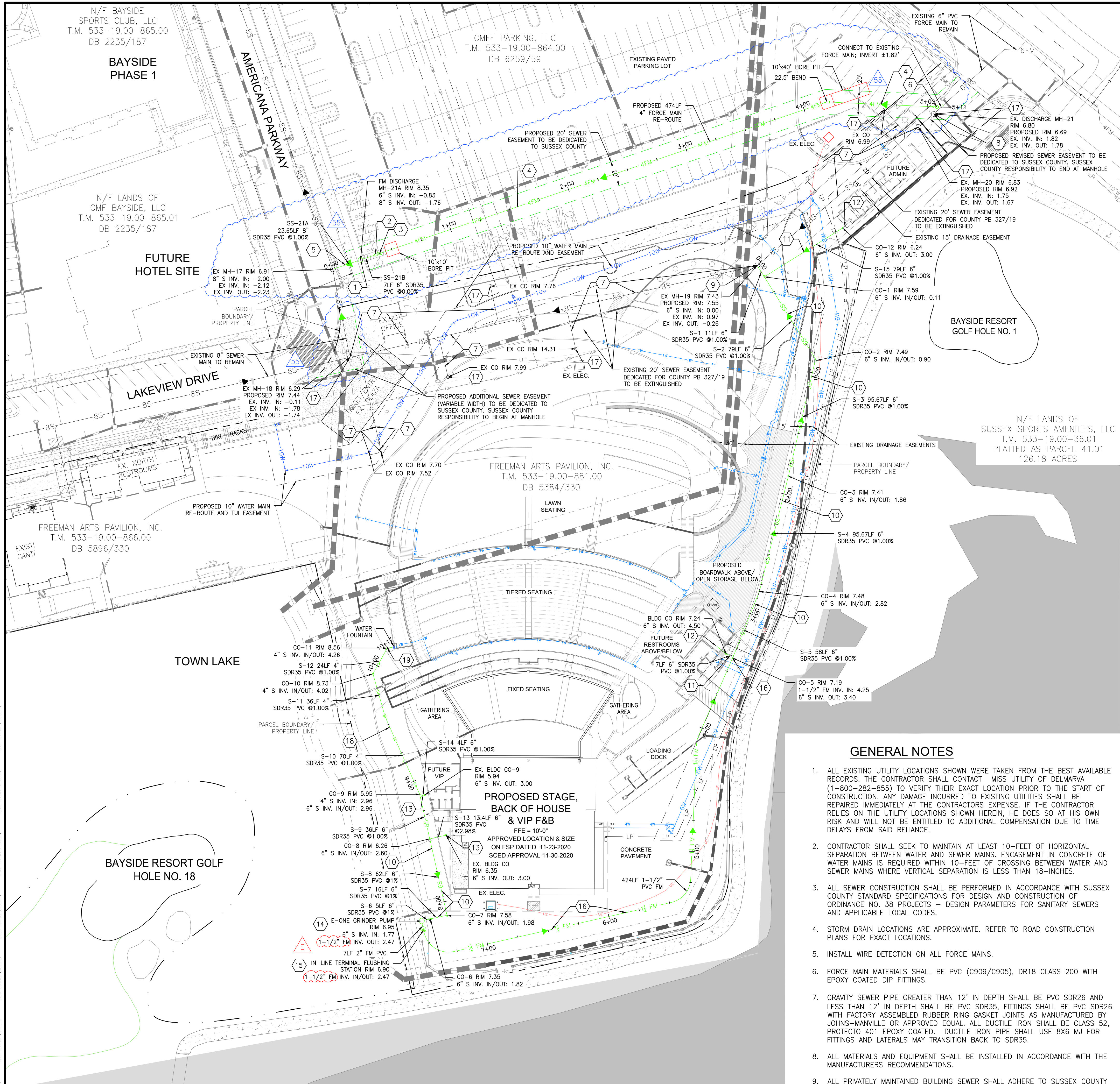
AMERICANA BAYSIDE

Joshua M. Freeman
FOUNDATION

BALTIMORE HUNDRED
SUSSEX COUNTY, DELAWARE

SCALE : NO SCALE	SHEET NO. G1.0
DESIGN BY : SLM	
DRAWN BY : TMG	
CHECKED BY :	
GMB FILE : 150078	
DATE : JUNE 2025	

\\proj\proj\1973\77555-0\Drawings\golf clubhouse and stage\working\sheet\Sanitary Sewer Plan.dwg, 10/20/2025 11:17 AM, Terry M. Gaudy



CONSTRUCTION NOTES

- CONSTRUCTION NOTES 1-8 UNDER SCED JURISDICTION
CONSTRUCTION NOTES 9-17 PRIVATELY MAINTAINED BY OWNER
1. INSTALL FORCE MAIN DISCHARGE MANHOLE. SEE DETAIL ON SHEET C3.2
 2. INSTALL TONING WIRE BOX. SEE DETAIL ON SHEET C3.4.
 3. INSTALL ISOLATION VALVE. SEE DETAIL ON SHEET C3.4.
 4. FURNISH AND INSTALL 474LF, 4" HDPE FORCE MAIN. MAINTAIN MINIMUM 4 FT COVER. DIRECTIONAL DRILL FORCE MAIN UNDER EXISTING PARKING LOT. SEE FORCE MAIN PROFILE ON SHEET C5.0.
 5. FURNISH AND INSTALL 8" SDR35 PVC GRAVITY SEWER PIPE. CORE DRILL INTO EXISTING SEWER MH-17 AT INVERT 1.70. CONTRACTOR TO FIELD VERIFY LOCATION AND INVERT. SEE PROFILE ON SHEET C5.0.
 6. CONNECT PROPOSED 4" HDPE FORCE MAIN TO EXISTING 6" FORCE MAIN SERVING GOLF CLUBHOUSE AND VILLAGE A PUMP STATION WITH A 4"x6" REDUCER AND AIR RELEASE VALVE AND 6"-45" BEND. CONTRACTOR TO TEST PIT TO VERIFY LOCATION AND INVERT. SEE FORCE MAIN PROFILE ON SHEET C5.0.
 7. EXISTING 8" SANITARY SEWER MAIN AND CLEANOUTS BETWEEN MH-18 AND MH-21 TO REMAIN AND BE MAINTAINED PRIVATELY BY FREEMAN ARTS PAVILION, INC. PREVIOUSLY RECORDED EASEMENTS DEDICATED TO SUSSEX COUNTY PB 327-19, TO BE EXTINGUISHED.
 8. ABANDON IN PLACE EXISTING FORCE MAIN DISCHARGE MH-21. INSTALL MECHANICAL PLUGS INTO ALL PIPES ENTERING AND EXITING MANHOLE. SEE DETAILS ON SHEET C3.2.
 9. CORE DRILL PROPOSED 6" SDR35 PVC SANITARY SEWER SERVICE MAIN INTO EXISTING MH-19 AT INVERT 0.82'. RAISE RIM TO 7.55. CONTRACTOR TO FIELD VERIFY LOCATION AND INVERT.
 10. 6" SDR35 PVC SANITARY SEWER SERVICE MAIN. INSTALL AT MINIMUM 1% SLOPE WITH CLEANOUT EVERY 100 LF. SEE PROFILE ON SHEET C5.0. CLEANOUT FRAME AND COVER TO BE TRAFFIC BEARING.
 11. 6" SANITARY SEWER LATERAL. EXTEND TO WITHIN 5' OF FUTURE BUILDING FOR CONNECTION. CLEANOUT FRAME AND COVER TO BE TRAFFIC BEARING. INSTALL AT MINIMUM 1% SLOPE. BUILDING CONTRACTOR TO INSTALL SEWER SERVICE FROM BUILDING TO LATERAL CLEANOUT. SIZE TO BE DETERMINED DURING CONSTRUCTION. SEE MEP PLANS FOR COORDINATION WITH PLUMBING PLANS FOR BUILDING CONNECTION LOCATION.
 12. FUTURE BUILDING SANITARY SEWER SERVICE. BUILDING CONTRACTOR TO INSTALL SEWER SERVICE FROM BUILDING TO LATERAL CLEANOUT UPON CONSTRUCTION. SIZE TO BE DETERMINED UPON FINAL BUILDING DESIGN.
 13. 6" SANITARY SEWER LATERAL. EXTEND TO CONNECT TO EXISTING CLEANOUT PREVIOUSLY INSTALLED DURING BOH CONSTRUCTION. INSTALL AT MINIMUM 1% SLOPE. CONTRACTOR TO TEST PIT TO VERIFY LOCATION AND INVERT.
 14. E-ONE GRINDER PUMP STATION. SEE DETAILS ON SHEET C3.4. INSTALL OUTSIDE OF PAVEMENT AREA.
 15. TERMINAL FLUSHING STATION. SEE DETAILS ON SHEET C3.4. INSTALL OUTSIDE OF PAVEMENT AREA.
 16. 1-1/2" PVC (C909/C905) SEWER FORCE MAIN. CONNECT TO CLEANOUT IN ACCESS ROAD AT THE END OF GRAVITY SEWER RUN. MAINTAIN MINIMUM 4 FT COVER. SEE DETAILS ON SHEET C3.4. SEE PROFILE ON SHEET C5.0.
 17. RAISE EXISTING RIM TO GRADES FOR PROPOSED SITE. SEE GRADING AND DRAINAGE PLAN, SHEET C2.0.
 18. 4" SDR35 PVC SANITARY SEWER SERVICE MAIN. INSTALL AT MINIMUM 1% SLOPE WITH CLEANOUT EVERY 75 LF. SEE PROFILE ON SHEET C5.0. CLEANOUT FRAME AND COVER TO BE TRAFFIC BEARING.
 19. 4" SANITARY SEWER LATERAL. EXTEND TO WITHIN 5' OF BUILDING FOR CONNECTION OF WATER FOUNTAIN. INSTALL AT MINIMUM 1% SLOPE. CLEANOUT FRAME AND COVER TO BE TRAFFIC BEARING. BUILDING CONTRACTOR TO INSTALL SEWER SERVICE FROM BUILDING TO LATERAL CLEANOUT. SIZE TO BE DETERMINED DURING CONSTRUCTION. SEE MEP PLANS FOR COORDINATION WITH PLUMBING PLANS FOR BUILDING CONNECTION LOCATION.

OWNER/DEVELOPER'S CERTIFICATION:

I HEREBY CERTIFY THAT I AM THE DEVELOPER OF THE PROPERTY DESCRIBED AND SHOWN ON THIS PLAN AND THAT THE PLAN WAS MADE AT MY DIRECTION.

PATTI GRIMES
FREEMAN ARTS PAVILION, INC. & CMFF PARKING, LLC
T.M. 533-19.00-881.00 & 864.00

DATE

ENGINEER'S CERTIFICATION:

"I, STEPHEN L. MARSH, P.E., HEREBY CERTIFY THAT I AM A REGISTERED ENGINEER IN THE STATE OF DELAWARE, THAT THE INFORMATION SHOWN HERE HAS BEEN PREPARED UNDER MY SUPERVISION AND TO THE BEST OF MY KNOWLEDGE AND BELIEVE REPRESENTS GOOD ENGINEERING PRACTICES AS REQUIRED BY THE APPLICABLE LAWS OF THE STATE OF DELAWARE."

STEPHEN L. MARSH, P.E.
GEORGE, MILES, & BUHR, LLC.

DATE

APPROVED:

SUSSEX COUNTY ENGINEER
AGREEMENT # 341-11

DATE

PRINTS ISSUED FOR:
REVIEW AND APPROVAL

DATE	REVISIONS	NO.
APRIL 2025	2026 CONSTRUCTION SET SEWER & FORCE MAIN DESIGN	55
10/06/2025	REVISED PER DRWG COMMENTS	E

GMB

GEORGE, MILES & BUHR, LLC
ARCHITECTS & ENGINEERS
SALISBURY • BALTIMORE • SEAFORD
206 WEST MAIN STREET
SALISBURY, MARYLAND 21801
410-742-3115, FAX 410-548-9790
www.gmbnet.com

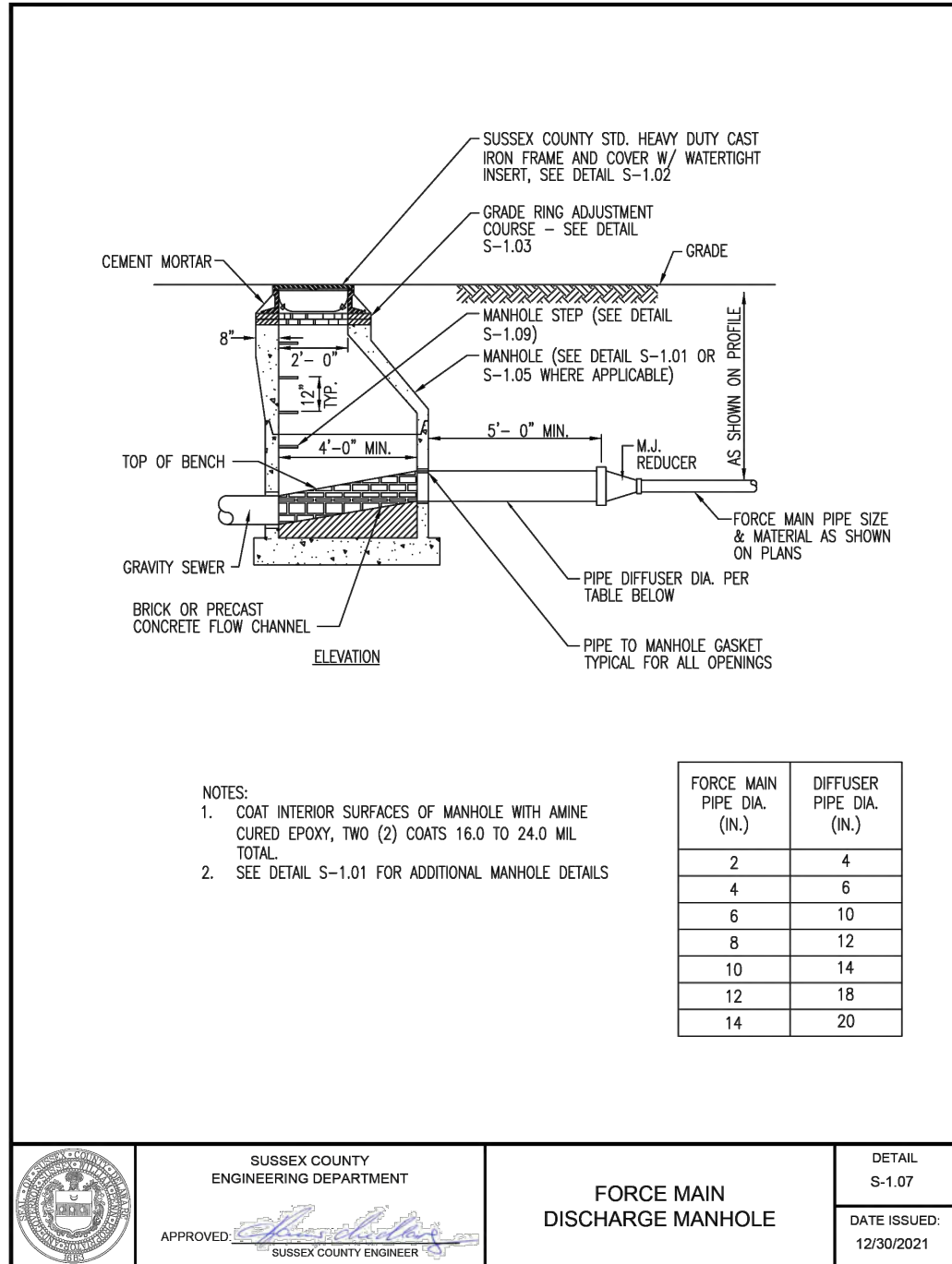
AMERICANA BAYSIDE

Joshua M. Freeman
FOUNDATION
BALTIMORE HUNDRED
SUSSEX COUNTY, DELAWARE

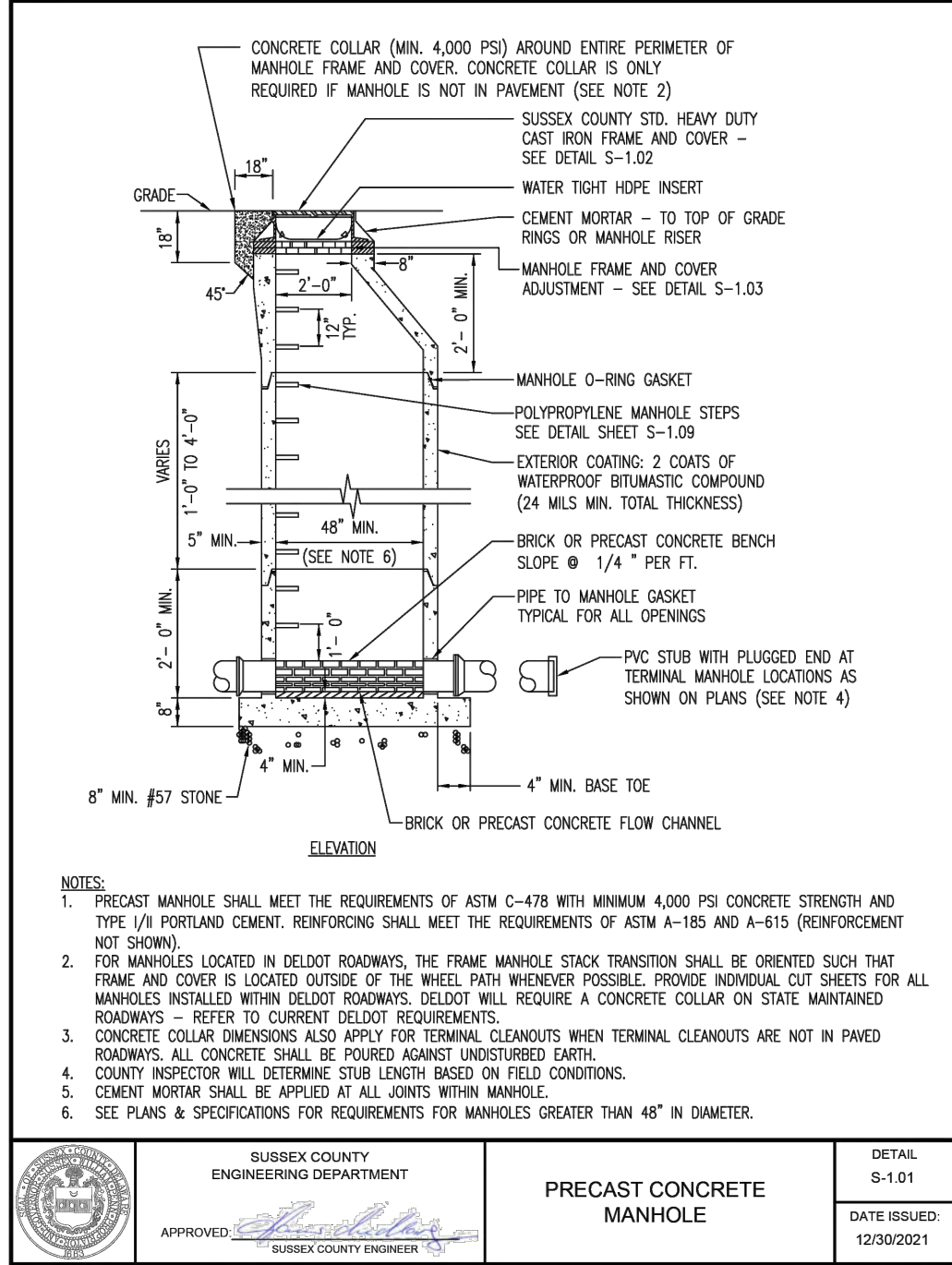
FREEMAN ARTS
PAVILION PHASE 4
SEASON 2026
SANITARY SEWER
PLAN

SCALE	SHEET NO.
1" = 40'	C3.1
DESIGN BY : SLM	
DRAWN BY : TMG	
CHECKED BY : SLM	
GMB FILE : 150078	
DATE : APR 2025	

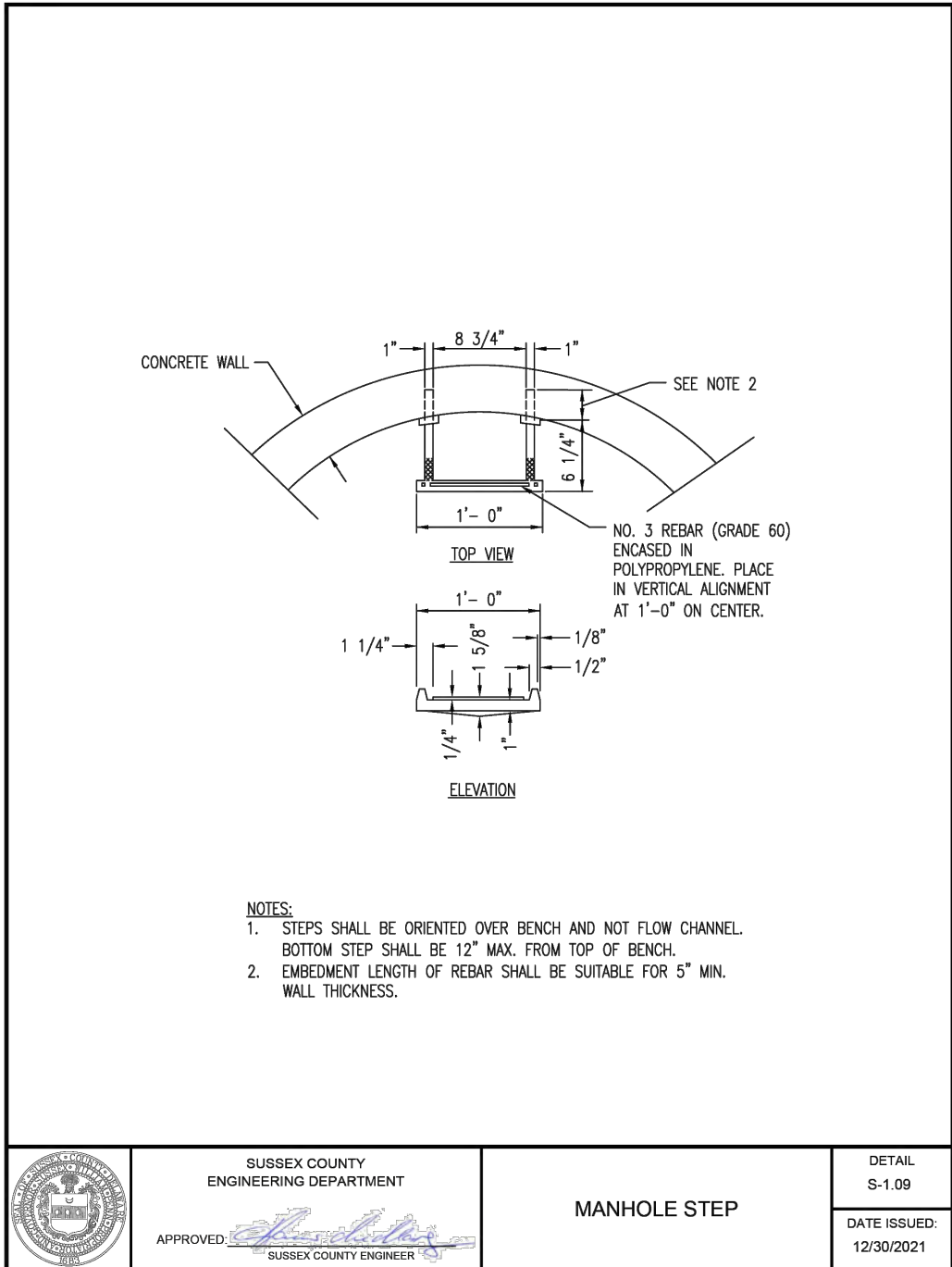
© COPYRIGHT 2023 GEORGE, MILES & BUHR, LLC



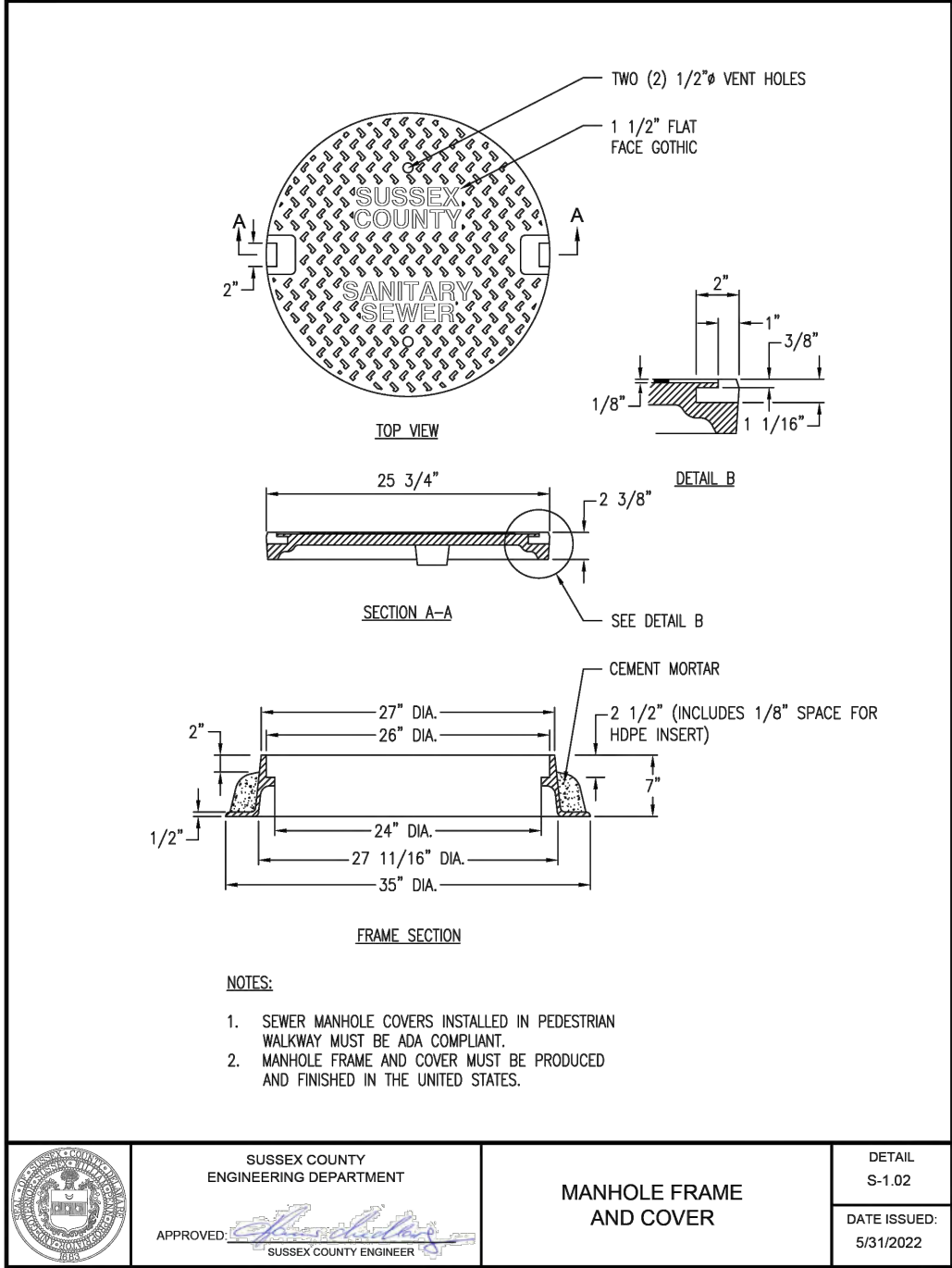
	SUSSEX COUNTY ENGINEERING DEPARTMENT	PRECAST CONCRETE MANHOLE	DETAIL S-1.07
APPROVED: [Signature]	SUSSEX COUNTY ENGINEER		DATE ISSUED: 12/30/2021



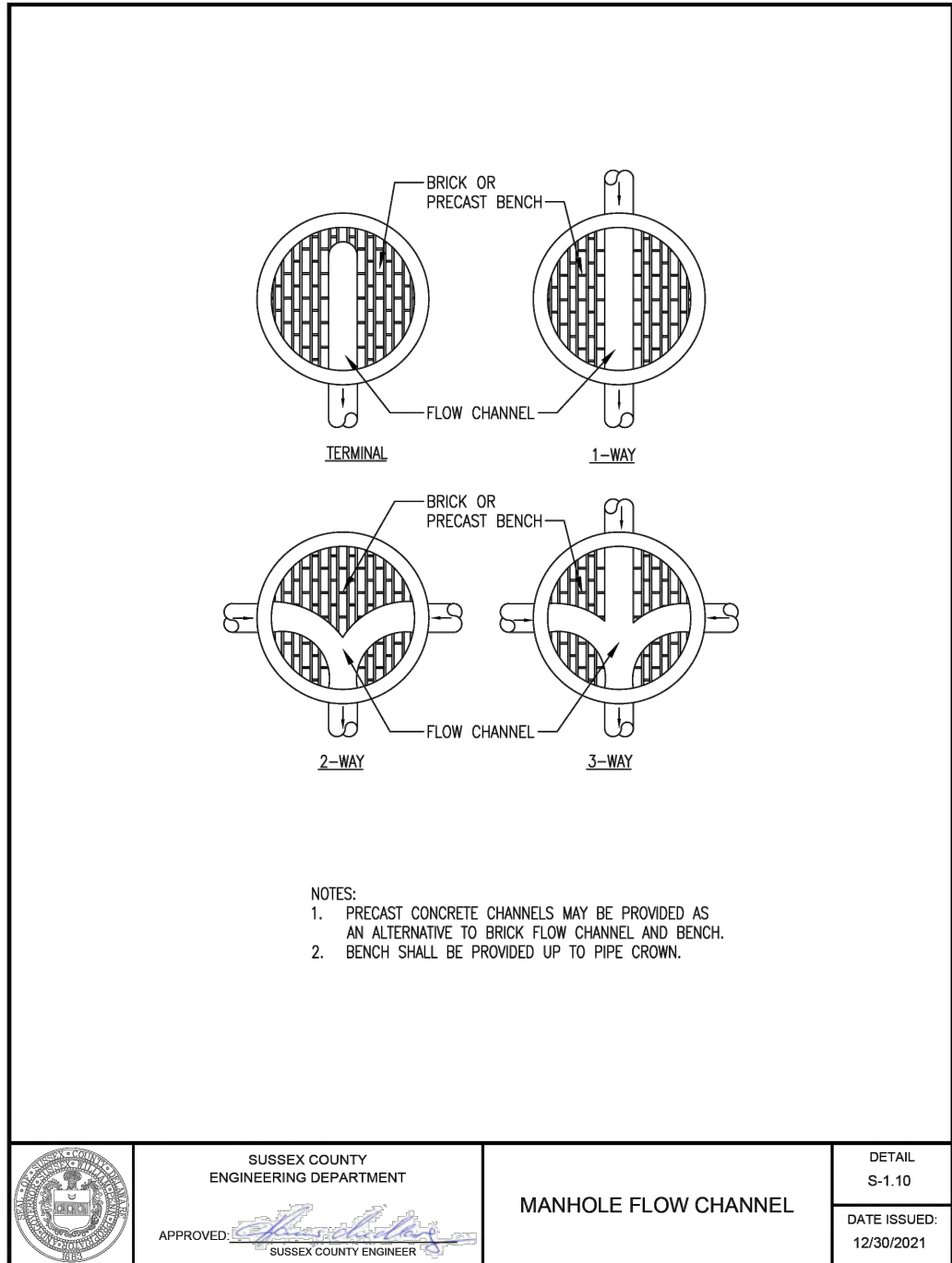
	SUSSEX COUNTY ENGINEERING DEPARTMENT	PRECAST CONCRETE MANHOLE	DETAIL S-1.01
APPROVED: [Signature]	SUSSEX COUNTY ENGINEER		DATE ISSUED: 12/30/2021



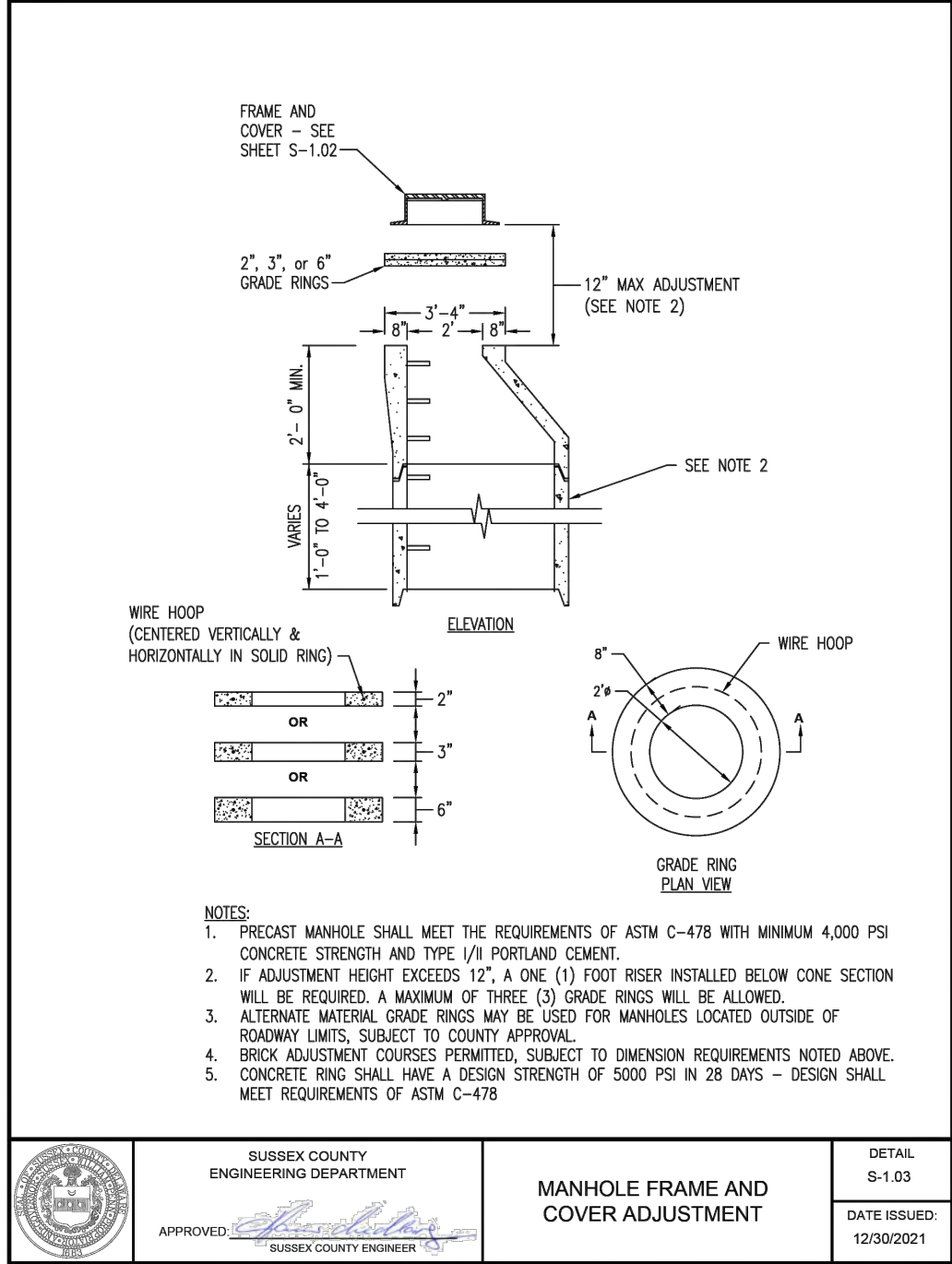
	SUSSEX COUNTY ENGINEERING DEPARTMENT	MANHOLE STEP	DETAIL S-1.09
APPROVED: [Signature]	SUSSEX COUNTY ENGINEER		DATE ISSUED: 12/30/2021



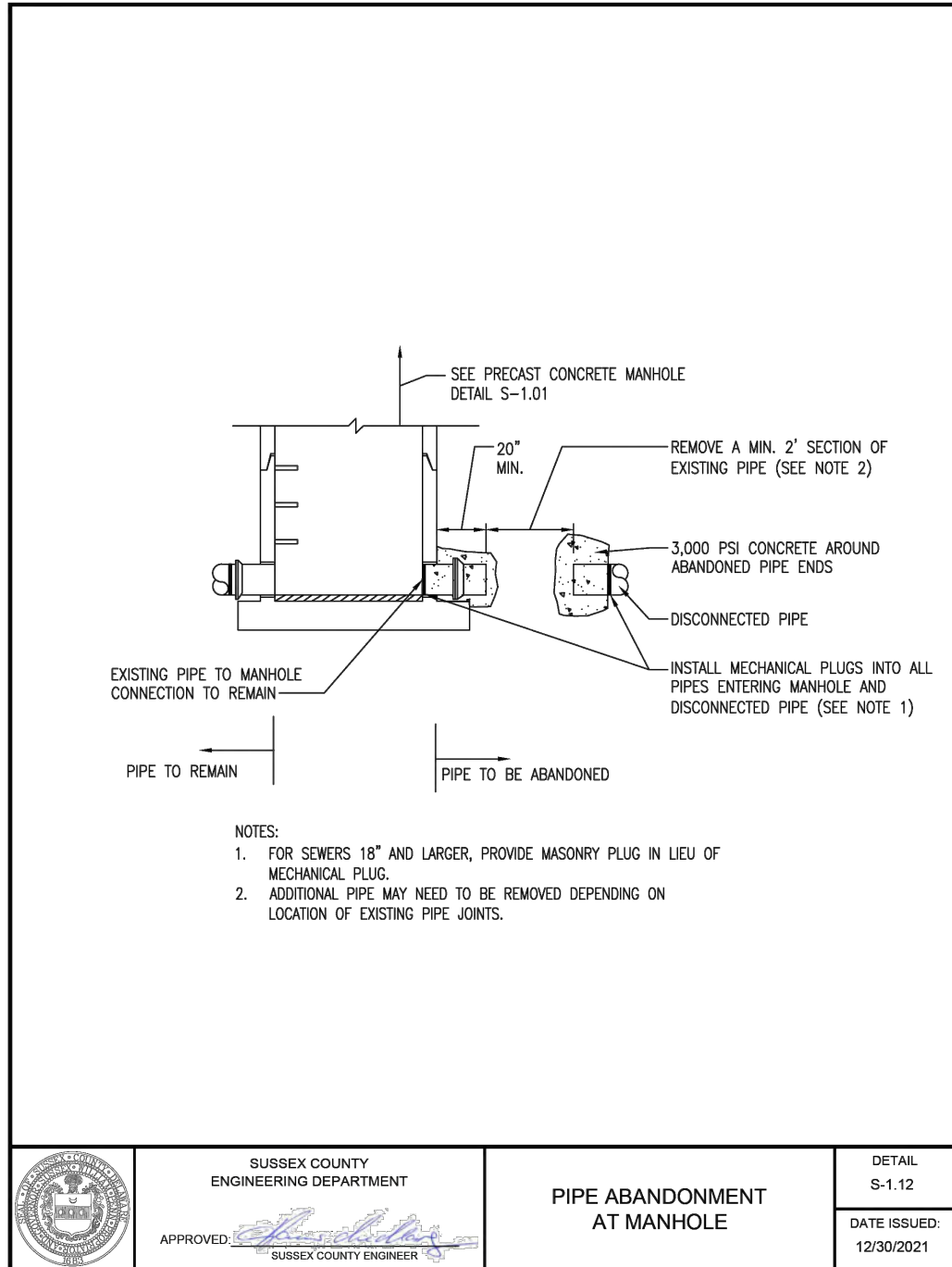
	SUSSEX COUNTY ENGINEERING DEPARTMENT	MANHOLE FRAME AND COVER	DETAIL S-1.02
APPROVED: [Signature]	SUSSEX COUNTY ENGINEER		DATE ISSUED: 12/30/2021



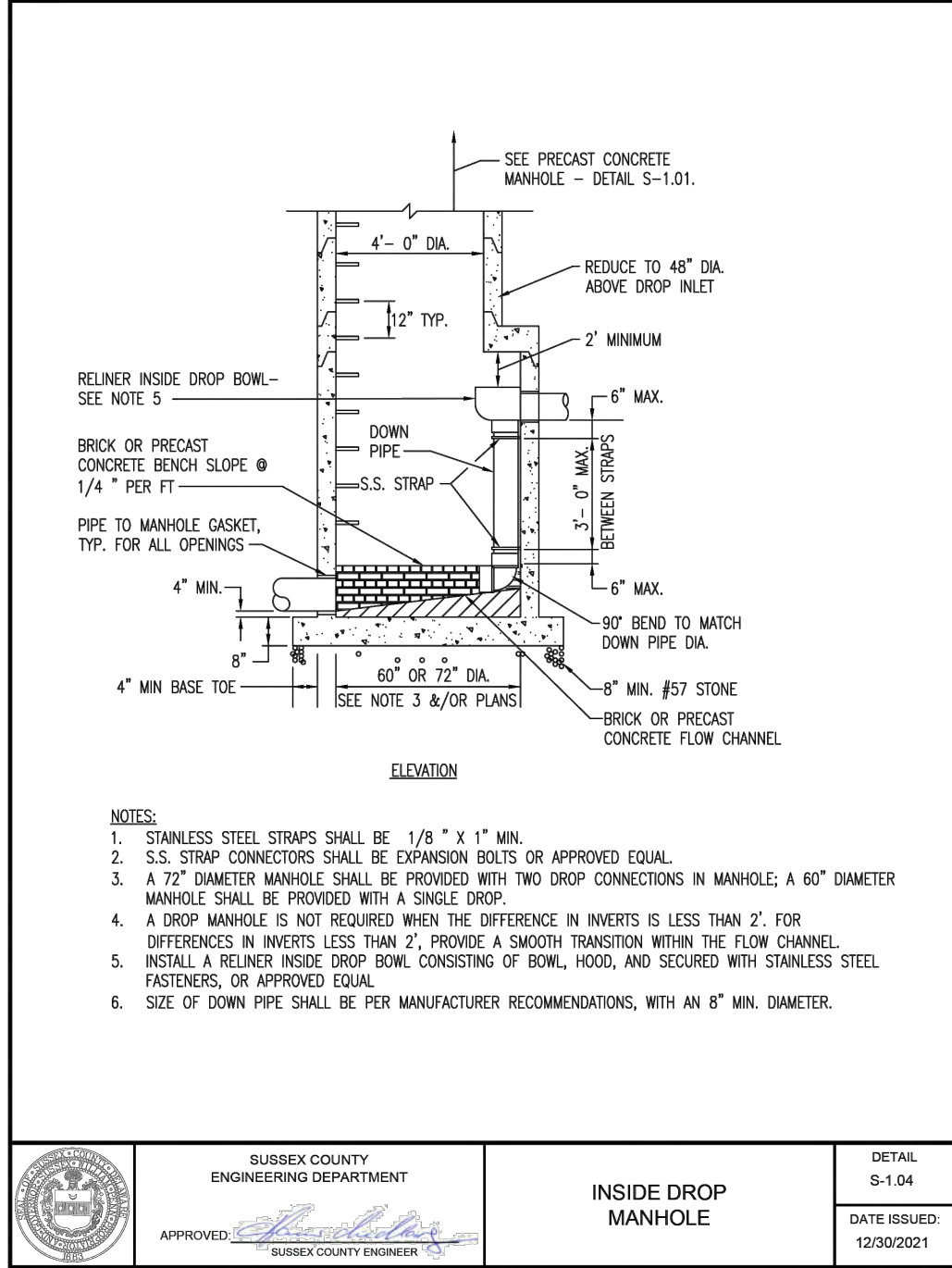
	SUSSEX COUNTY ENGINEERING DEPARTMENT	MANHOLE FLOW CHANNEL	DETAIL S-1.10
APPROVED: [Signature]	SUSSEX COUNTY ENGINEER		DATE ISSUED: 12/30/2021



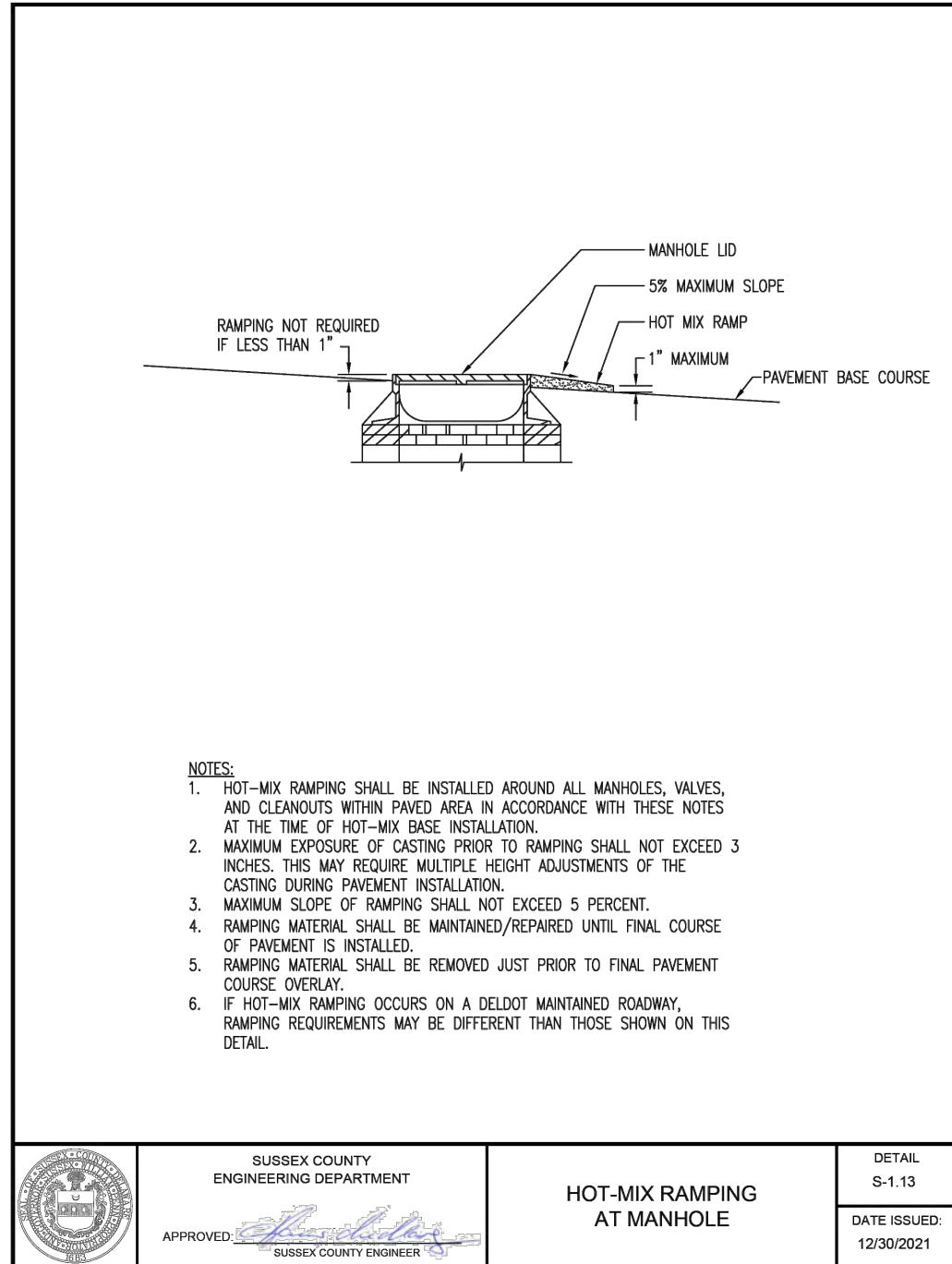
	SUSSEX COUNTY ENGINEERING DEPARTMENT	MANHOLE FRAME AND COVER ADJUSTMENT	DETAIL S-1.03
APPROVED: [Signature]	SUSSEX COUNTY ENGINEER		DATE ISSUED: 12/30/2021



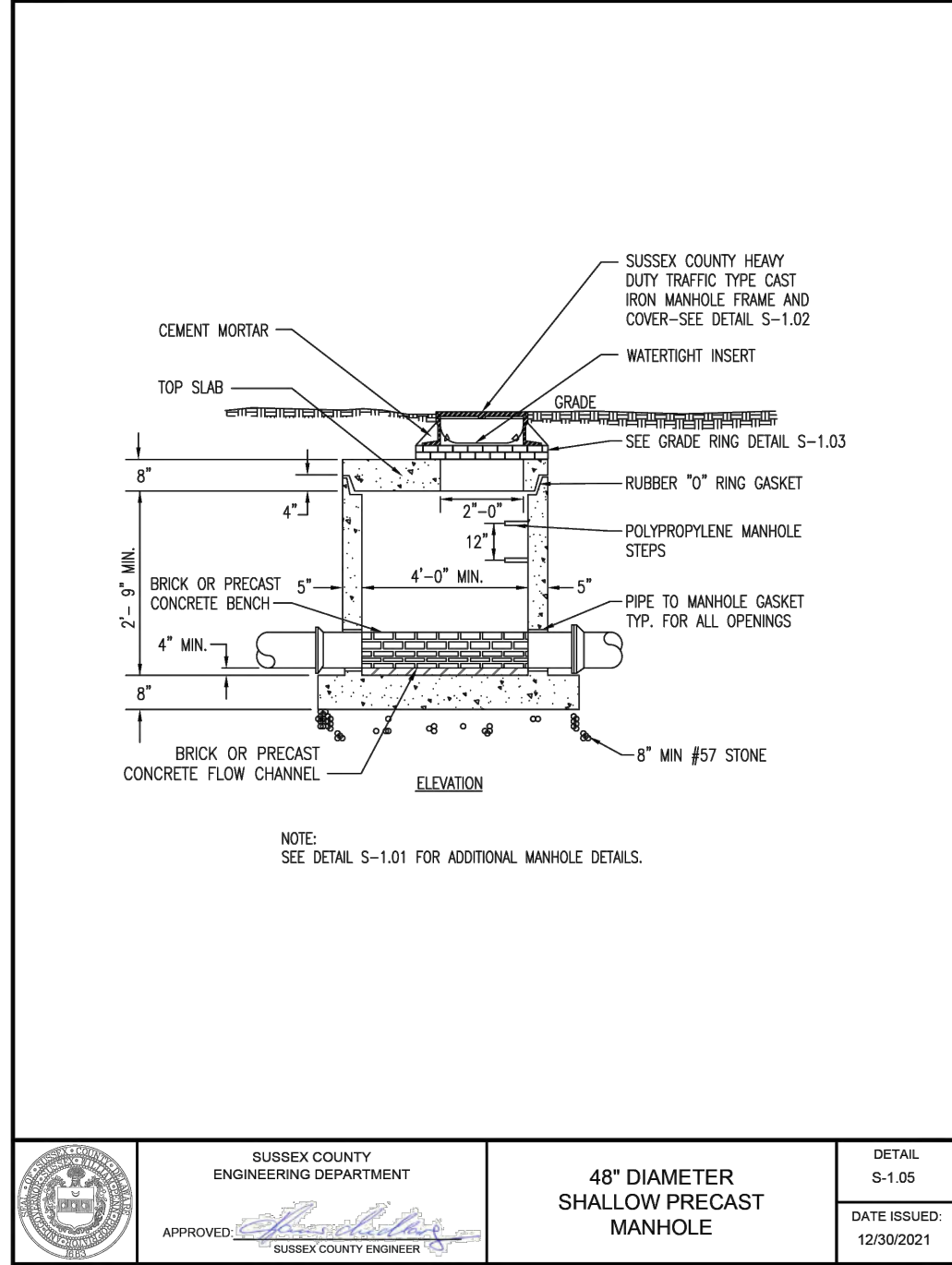
	SUSSEX COUNTY ENGINEERING DEPARTMENT	PIPE ABANDONMENT AT MANHOLE	DETAIL S-1.12
APPROVED: [Signature]	SUSSEX COUNTY ENGINEER		DATE ISSUED: 12/30/2021



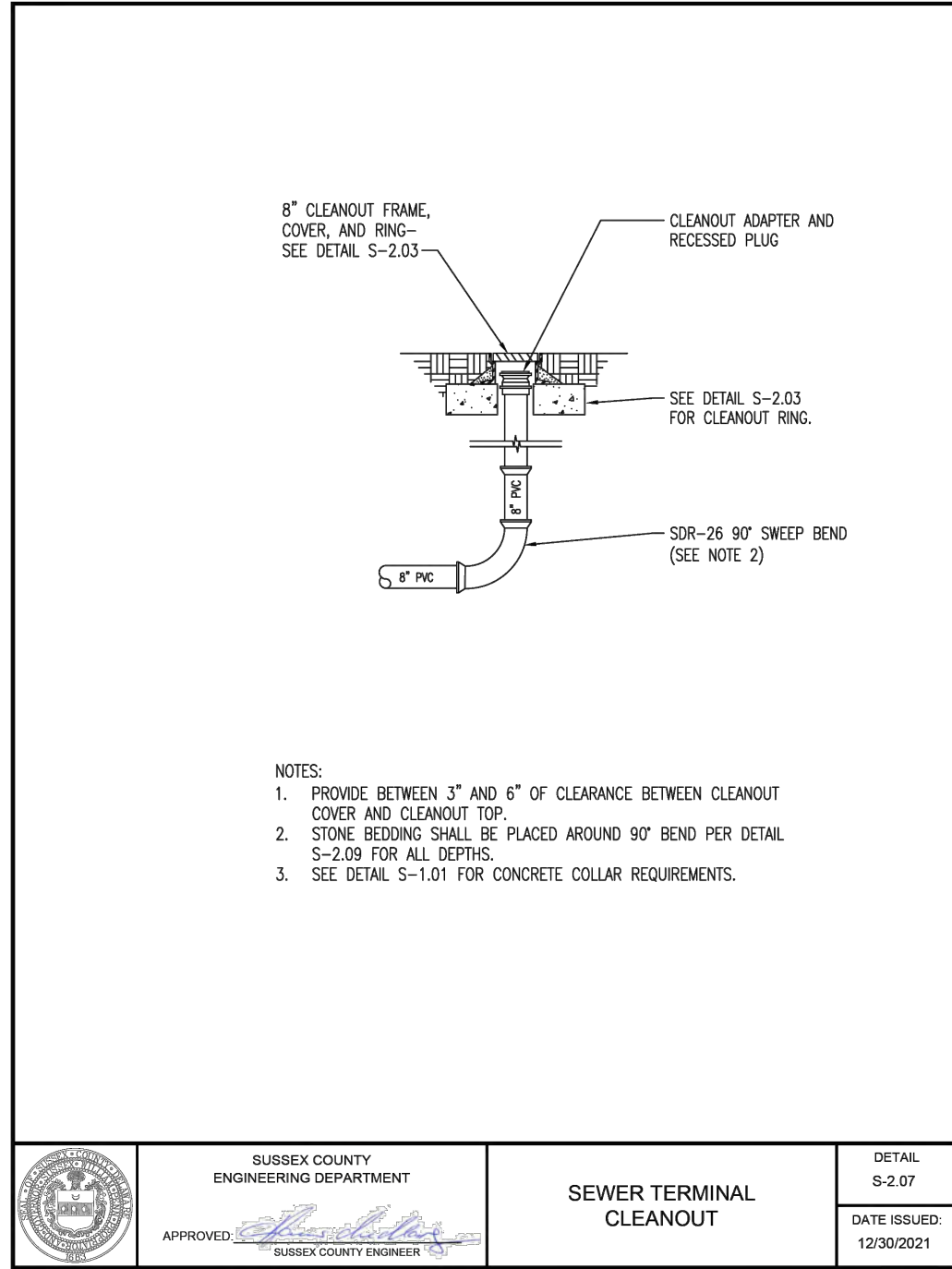
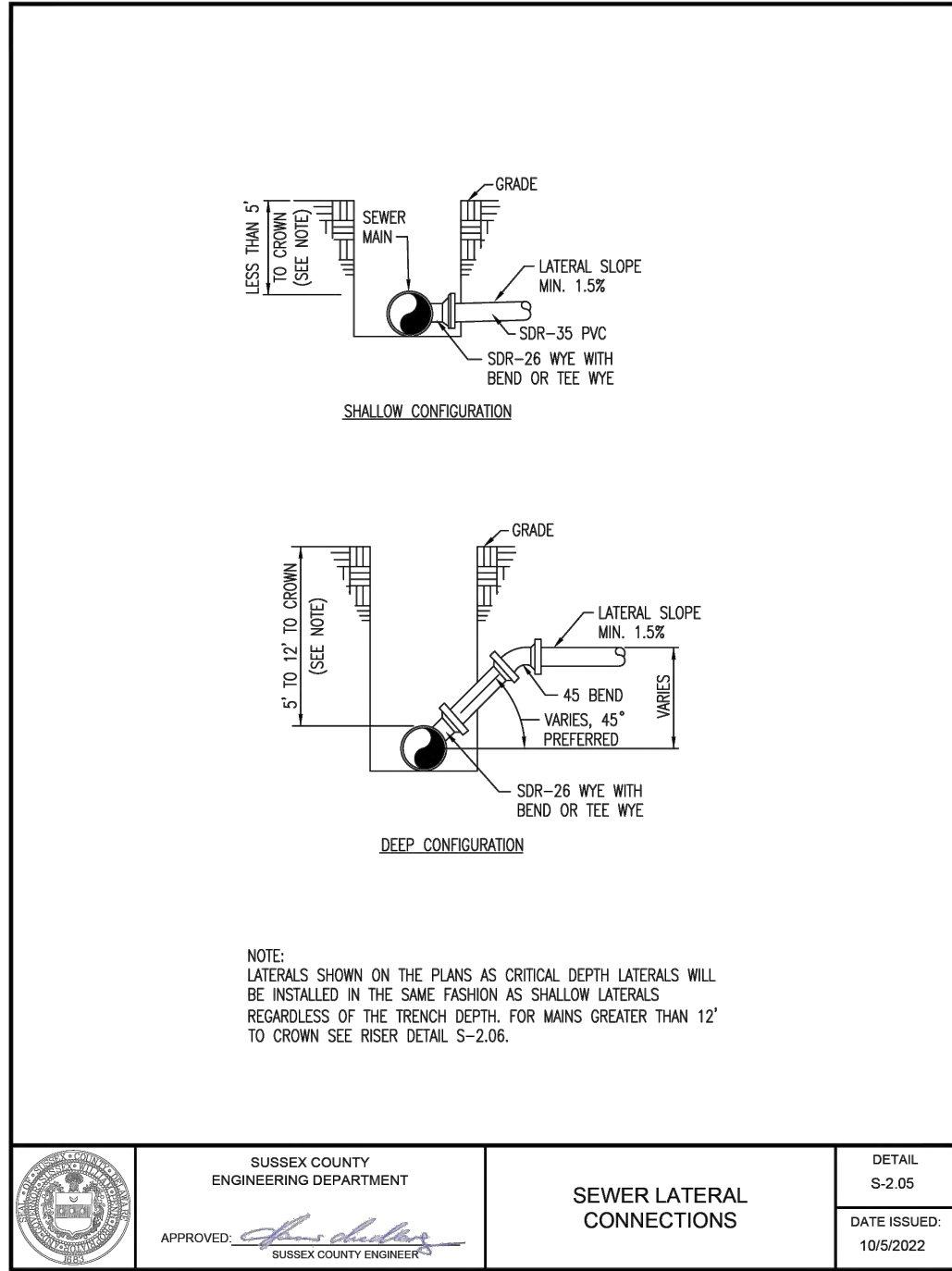
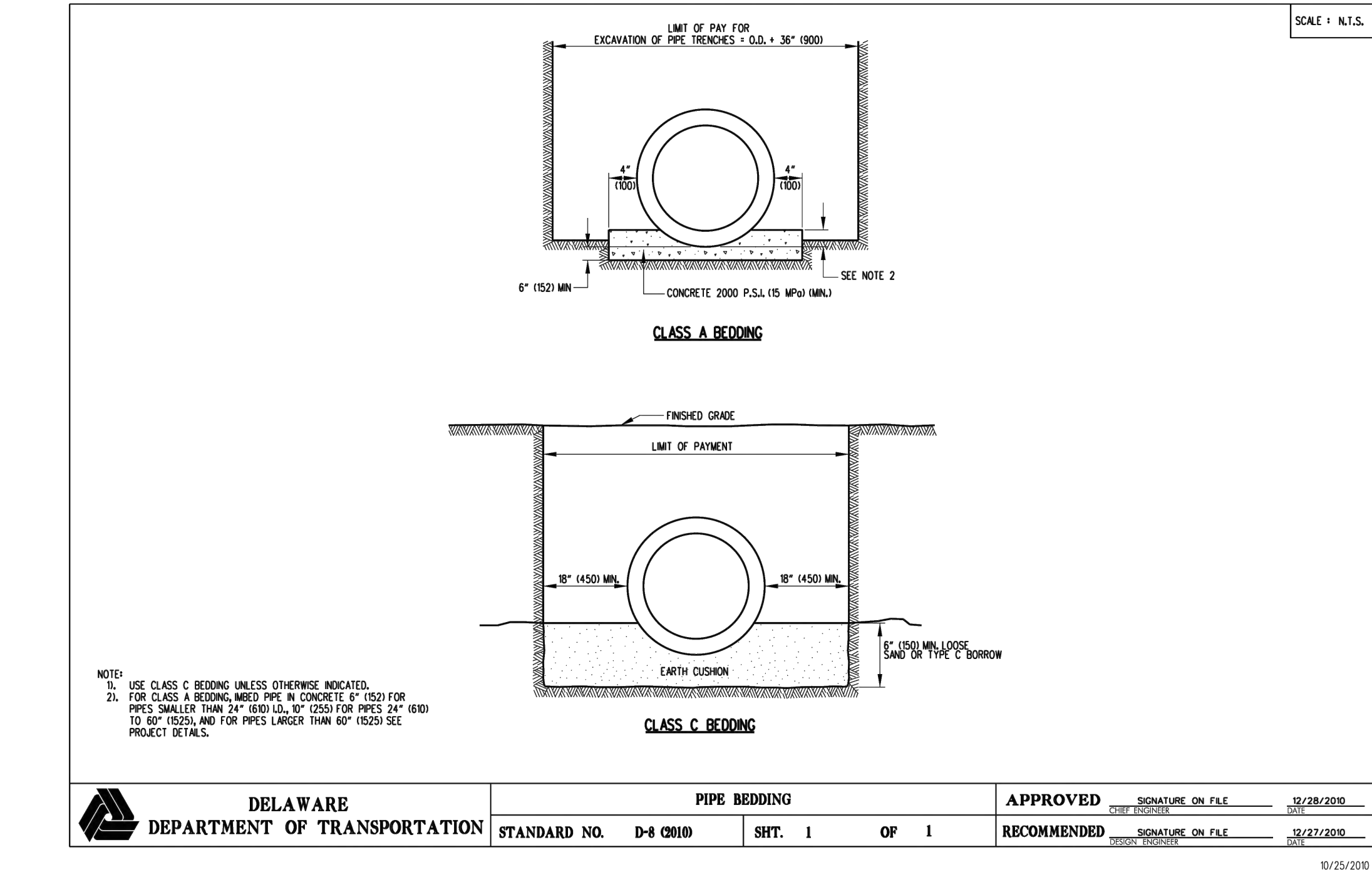
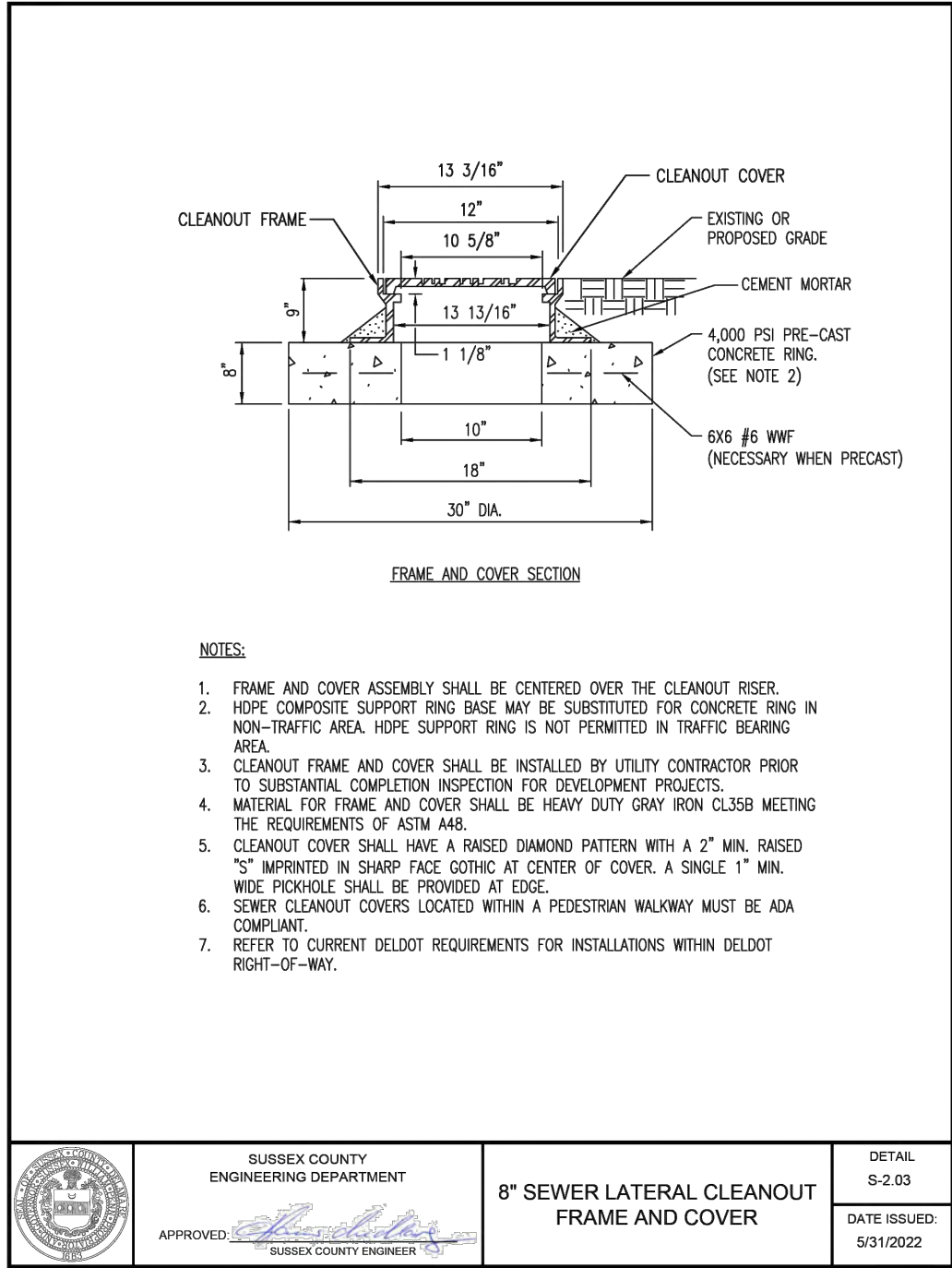
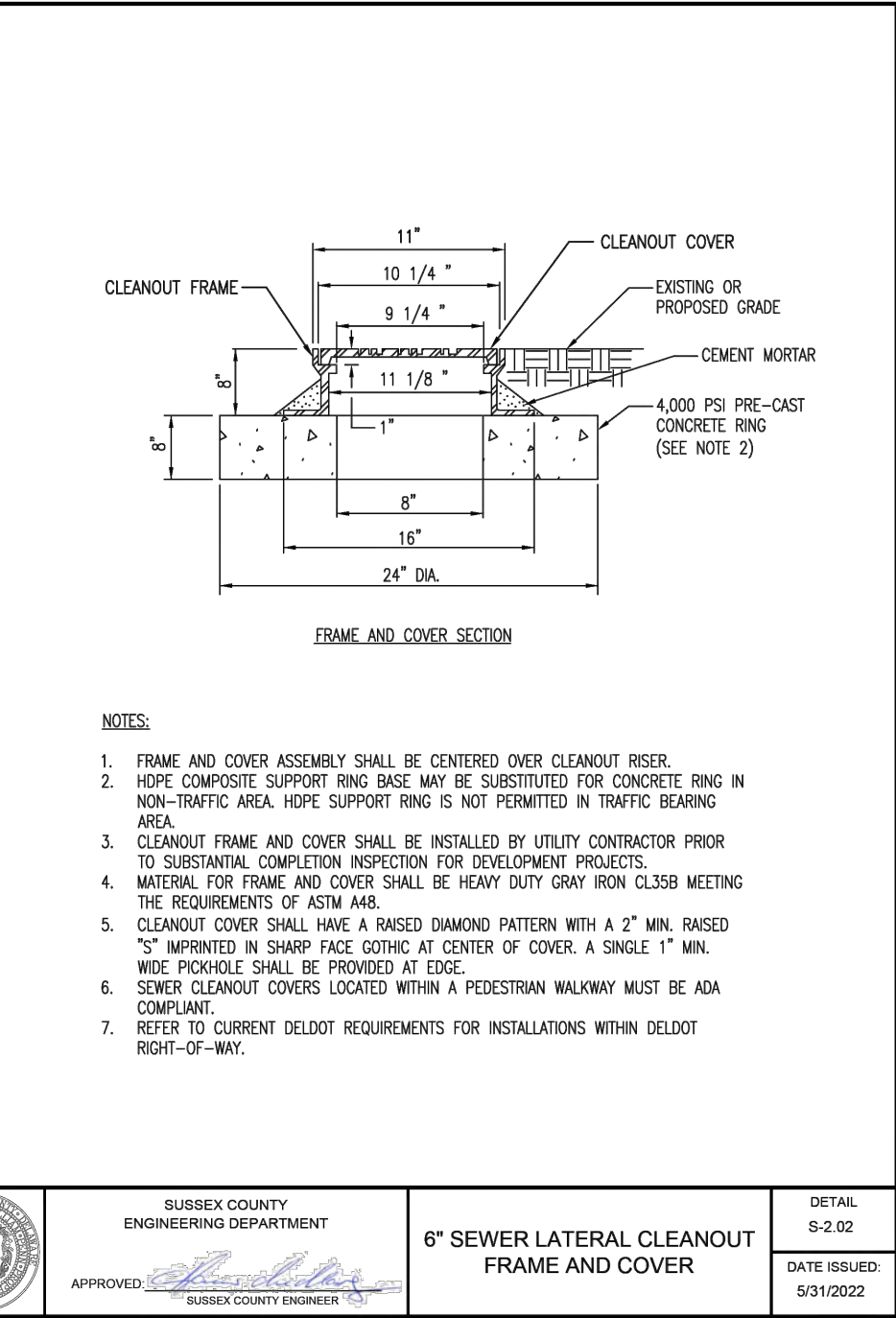
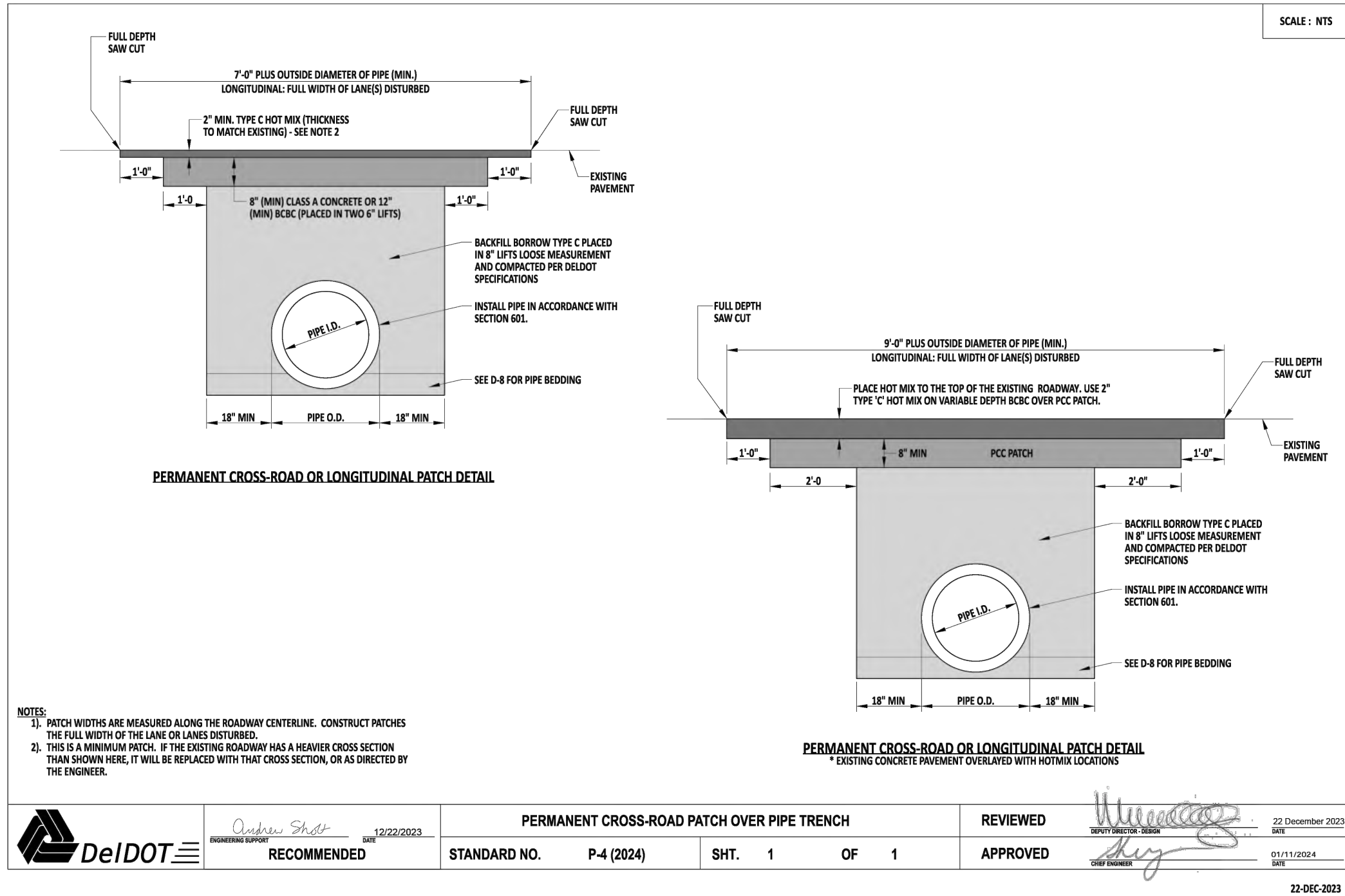
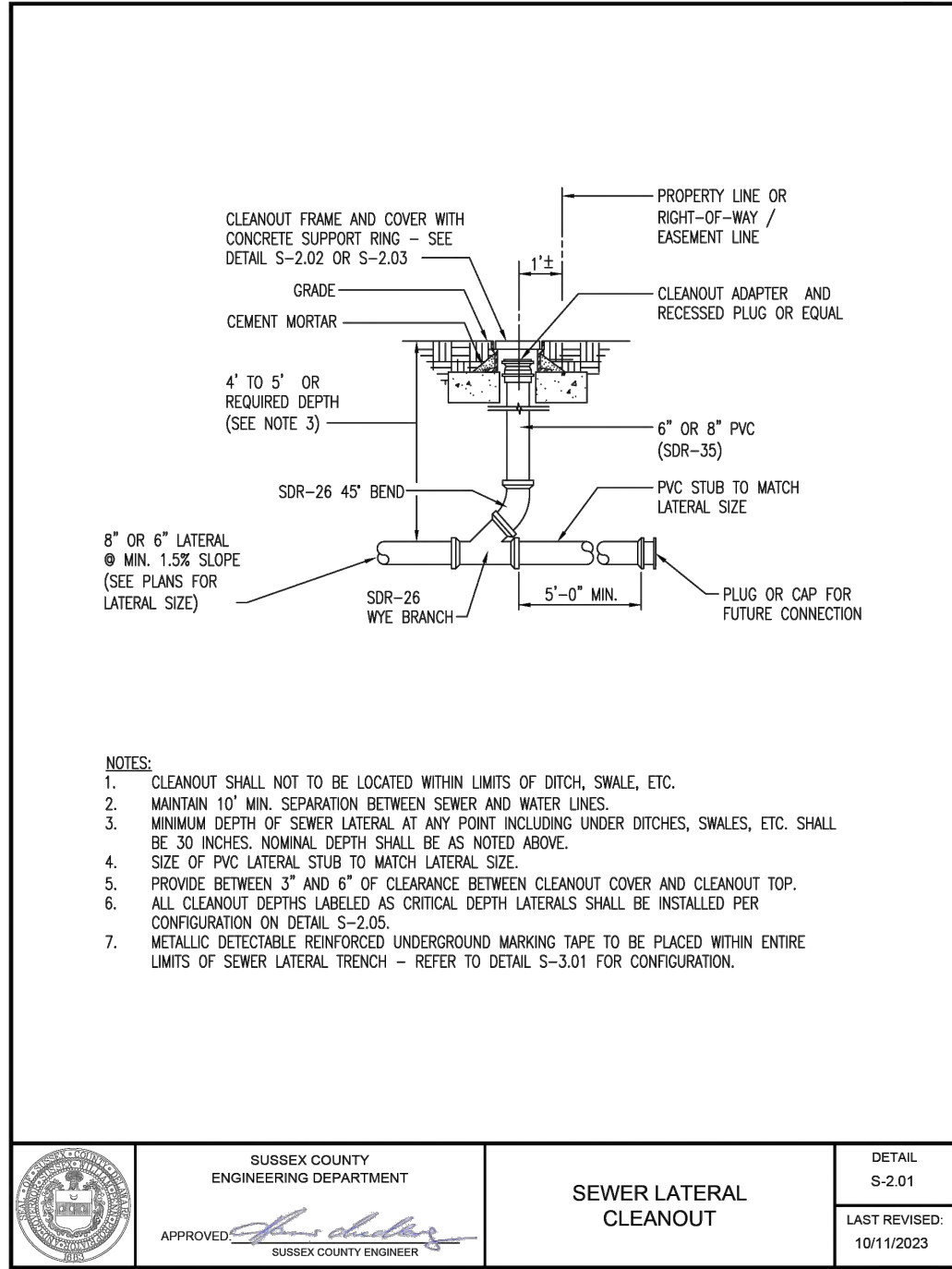
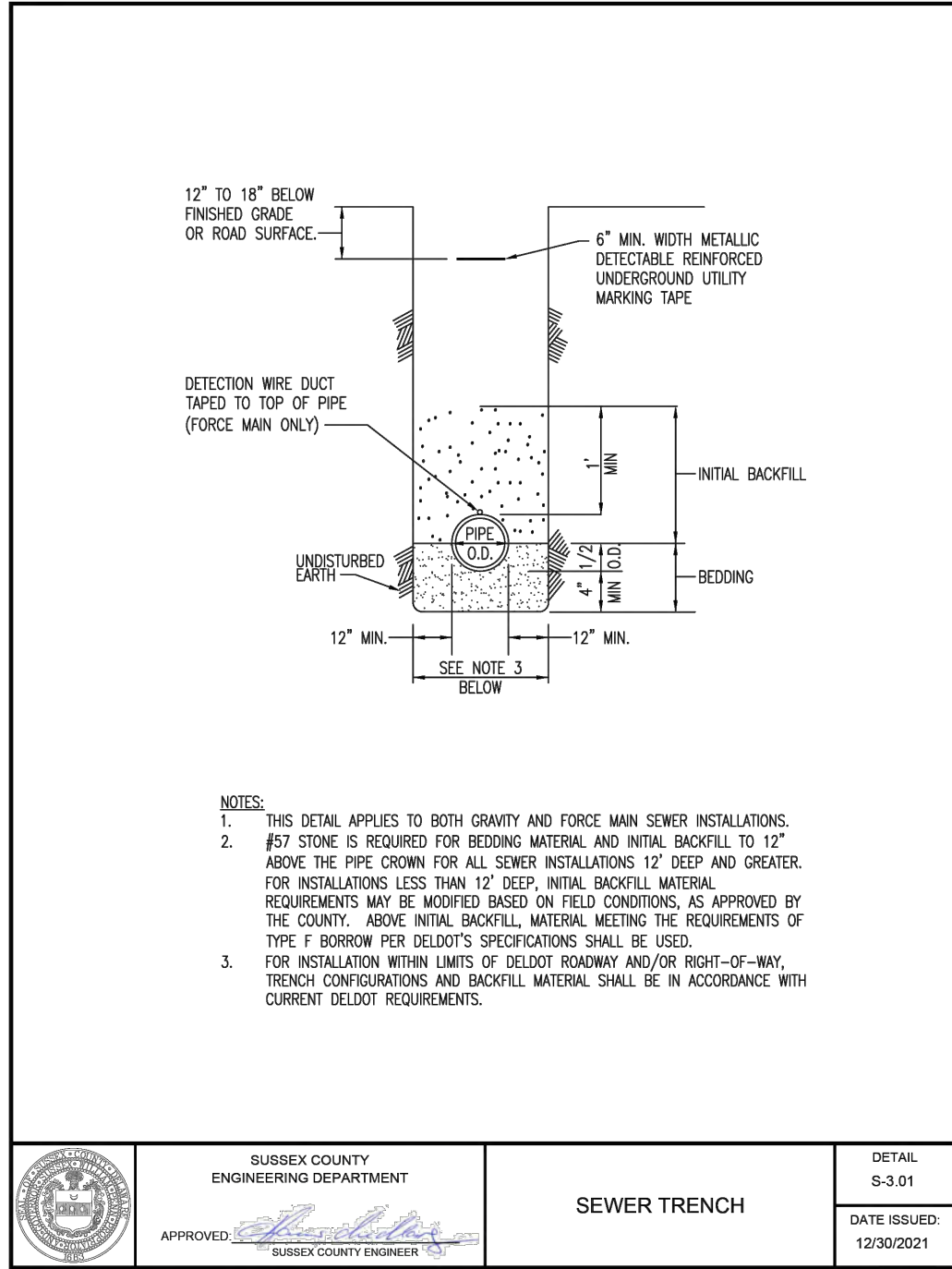
	SUSSEX COUNTY ENGINEERING DEPARTMENT	INSIDE DROP MANHOLE	DETAIL S-1.04
APPROVED: [Signature]	SUSSEX COUNTY ENGINEER		DATE ISSUED: 12/30/2021



	SUSSEX COUNTY ENGINEERING DEPARTMENT	HOT-MIX RAMPING AT MANHOLE	DETAIL S-1.13
APPROVED: [Signature]	SUSSEX COUNTY ENGINEER		DATE ISSUED: 12/30/2021



	SUSSEX COUNTY ENGINEERING DEPARTMENT	48" DIAMETER SHALLOW PRECAST MANHOLE	DETAIL S-1.08
APPROVED: [Signature]	SUSSEX COUNTY ENGINEER		DATE ISSUED: 12/30/2021



GMB
GEORGE, MILES & BUHR, LLC
ARCHITECTS & ENGINEERS
SAUSBURY • BALTIMORE • SEAFORD
206 WEST MAIN STREET
SALISBURY, MARYLAND 21801
410-742-3115, FAX 410-548-9790
www.gmbnet.com

AMERICANA BAYSIDE
Joshua M. Freeman
FOUNDATION
BALTIMORE HUNDRED
SUSSEX COUNTY, DELAWARE

55
FREEMAN ARTS
PAVILION PHASE 4
SEASON 2026
SANITARY SEWER
DETAILS

SCALE	NO SCALE	SHEET NO.
DESIGN BY	SLM	C3.3
DRAWN BY	TMG	
CHECKED BY	SLM	
GMB FILE	150078	
DATE	APR 2025	

© COPYRIGHT 2023 GEORGE, MILES & BUHR, LLC

PRINTS ISSUED FOR: REVIEW AND APPROVAL	
DATE	REVISIONS
APRIL 2025	
	2026 CONSTRUCTION SET SEWER & FORCE MAIN DESIGN
NO.	55

\\projects\1973\7058-0\Drawings\p\detail\working\set\detail\plan\p4 for 2026 season\CS4 SEWER FORCE MAIN DETAILS.dwg, 10/20/2025 1:15 AM, Terry M. Gaudy

PENK-RED
0.06 INCHES (1.6mm)

PENK-YELLOW
0.07 INCHES (1.8mm)

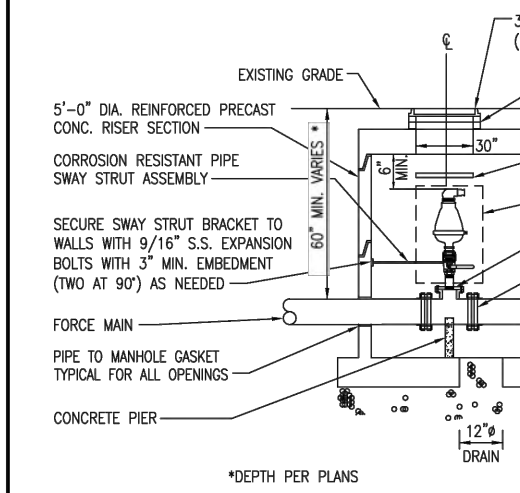
PENK-ORANGE
0.10 INCHES (2.5mm)

PENK-BLUE
0.14 INCHES (3.6mm)

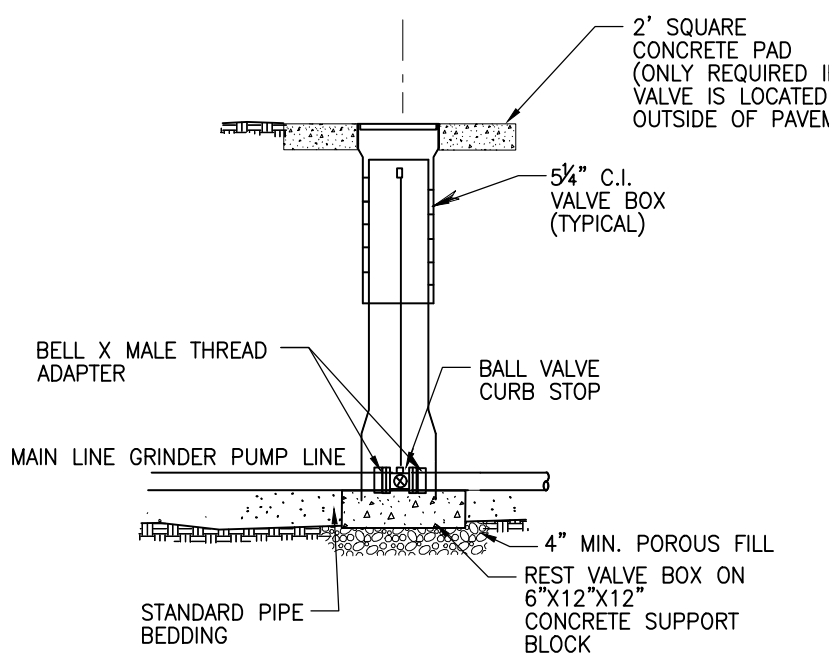
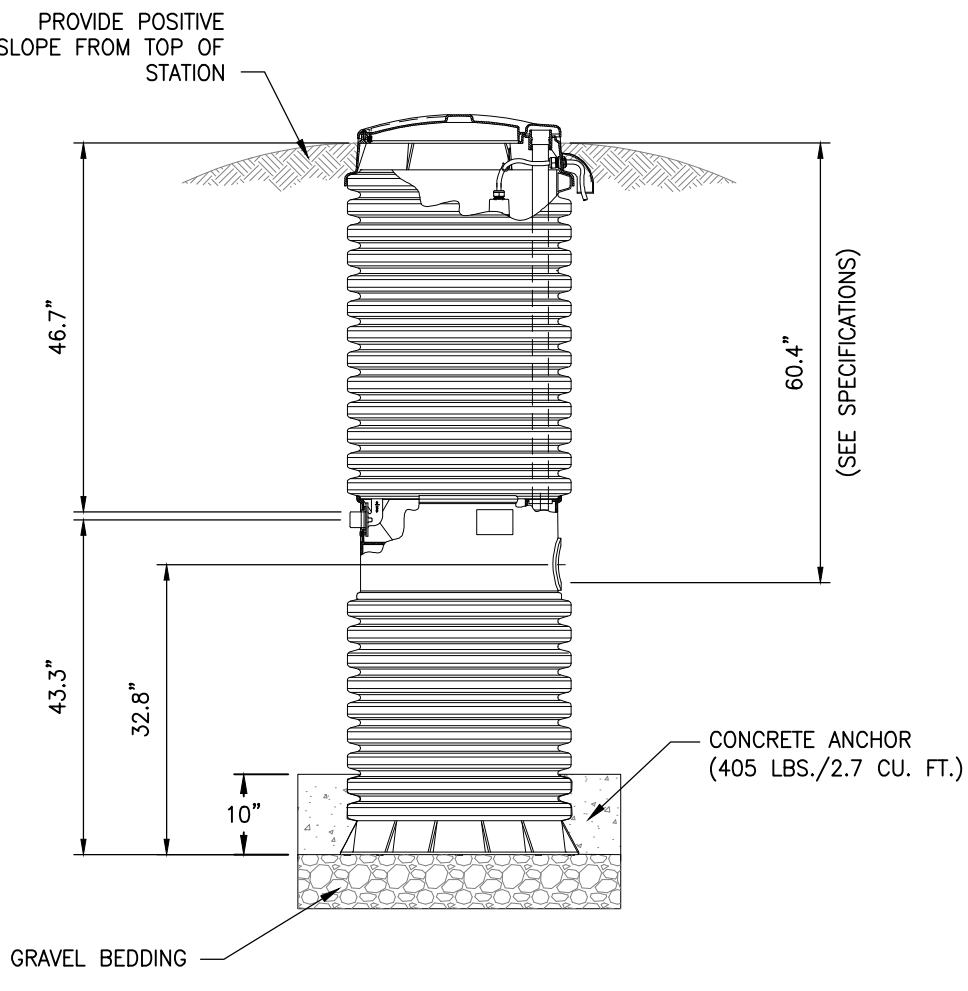
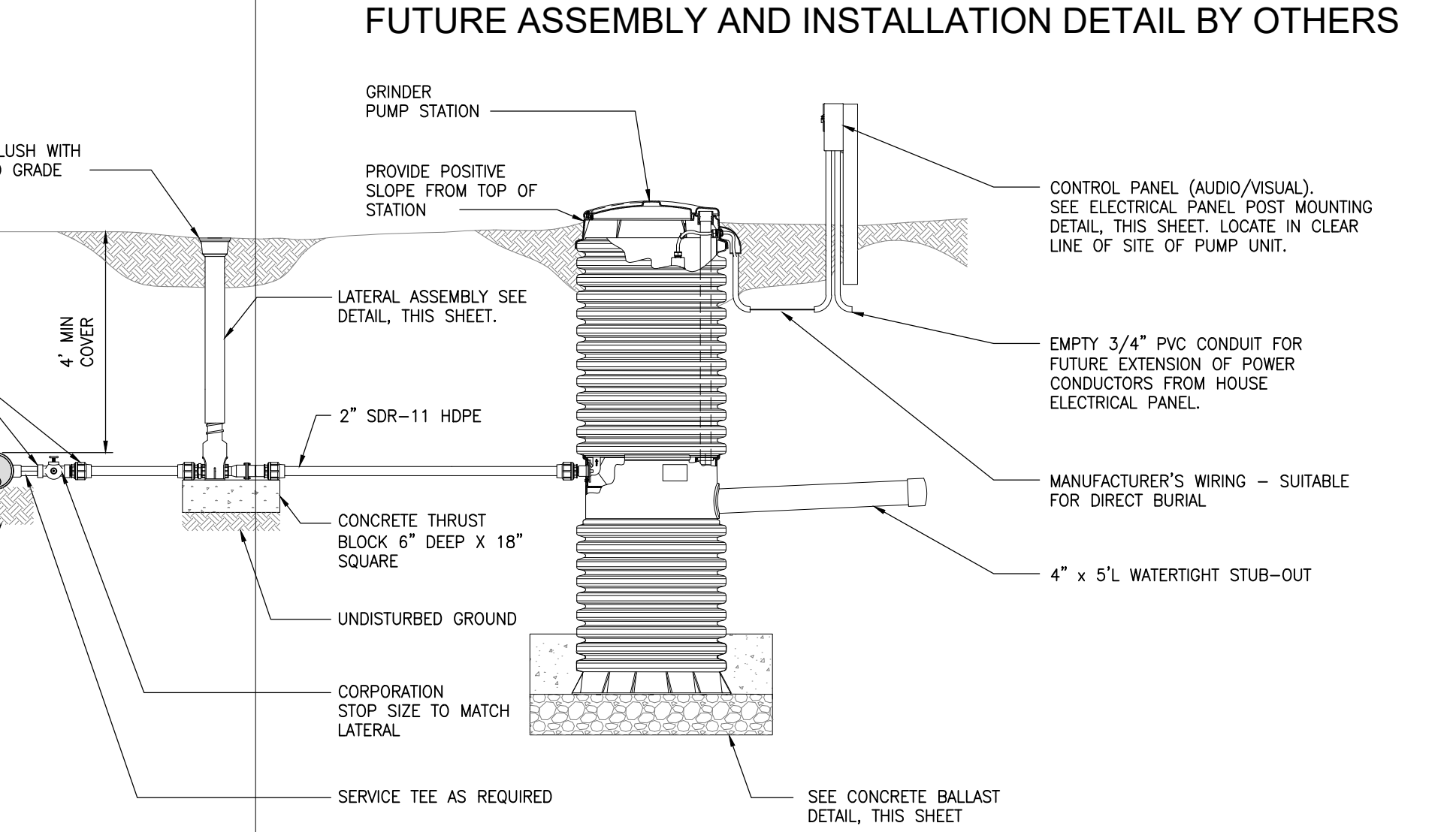
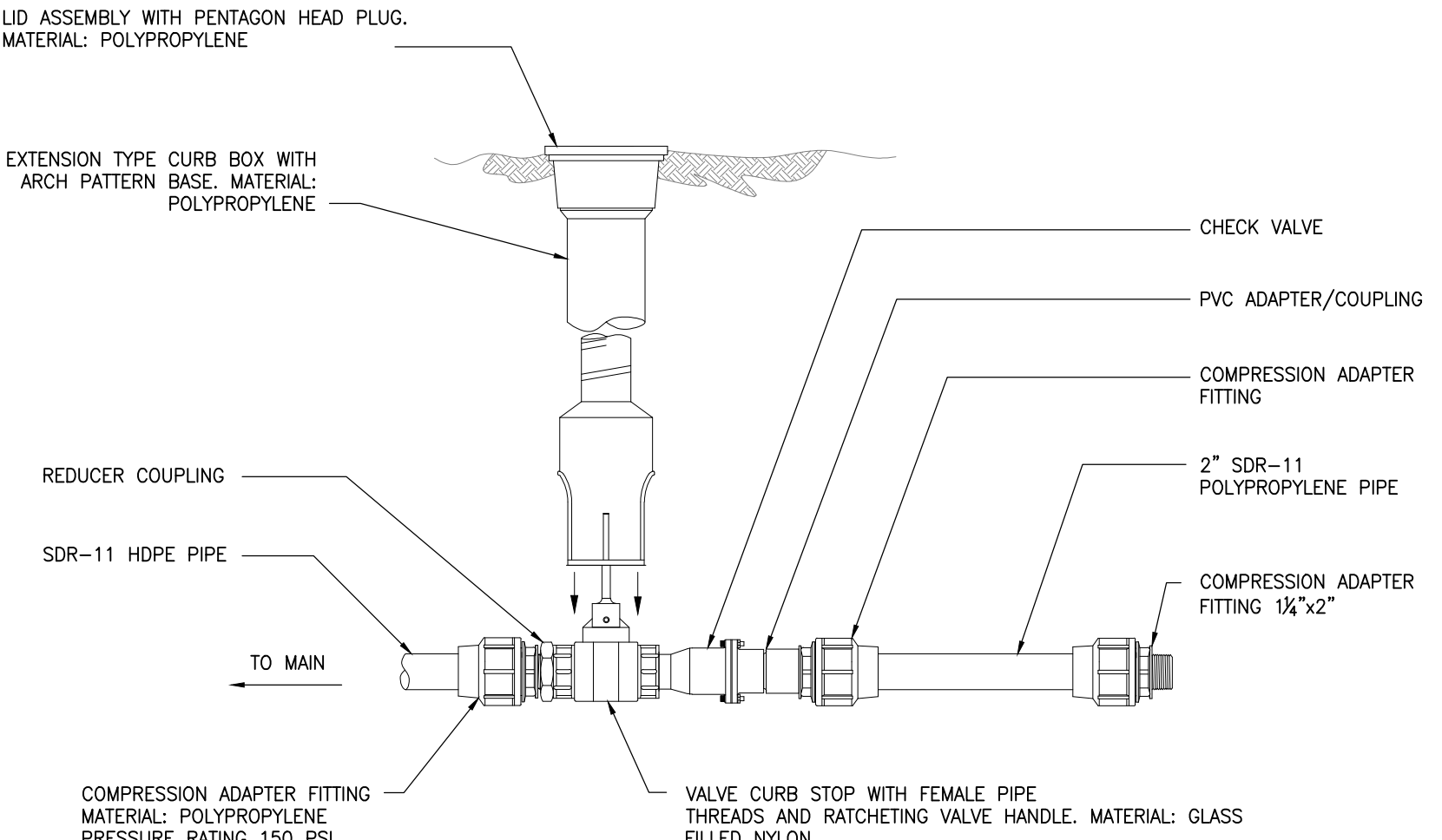
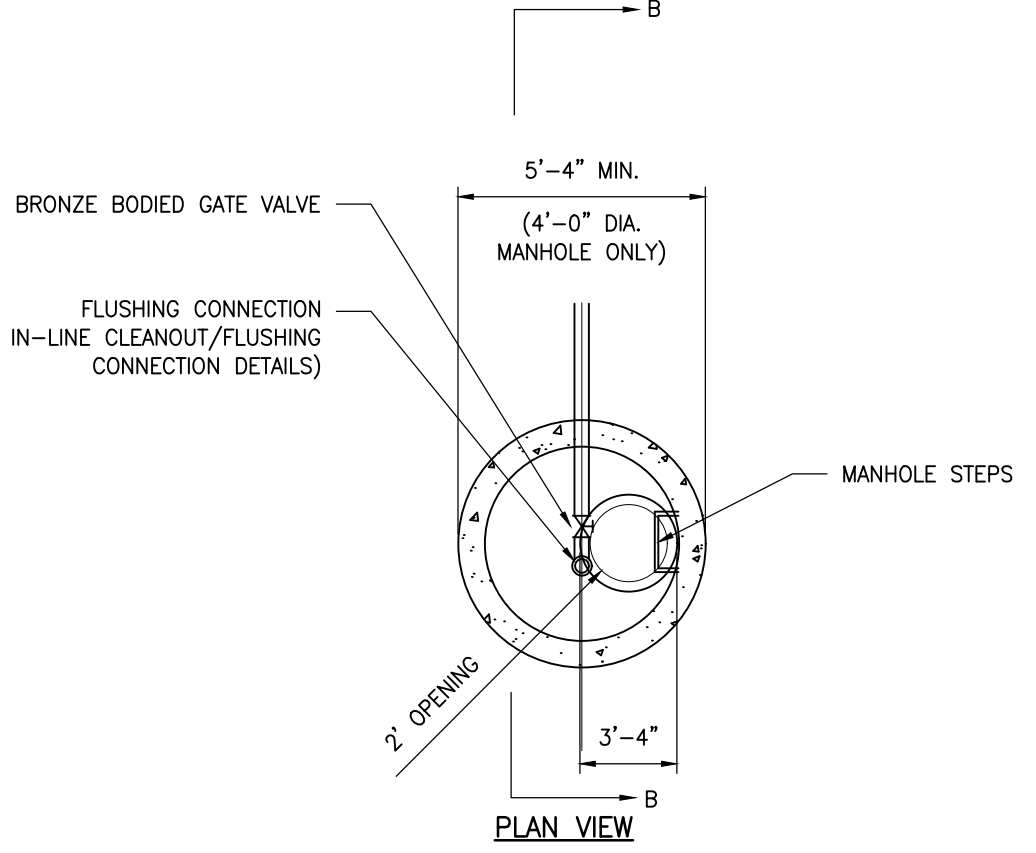
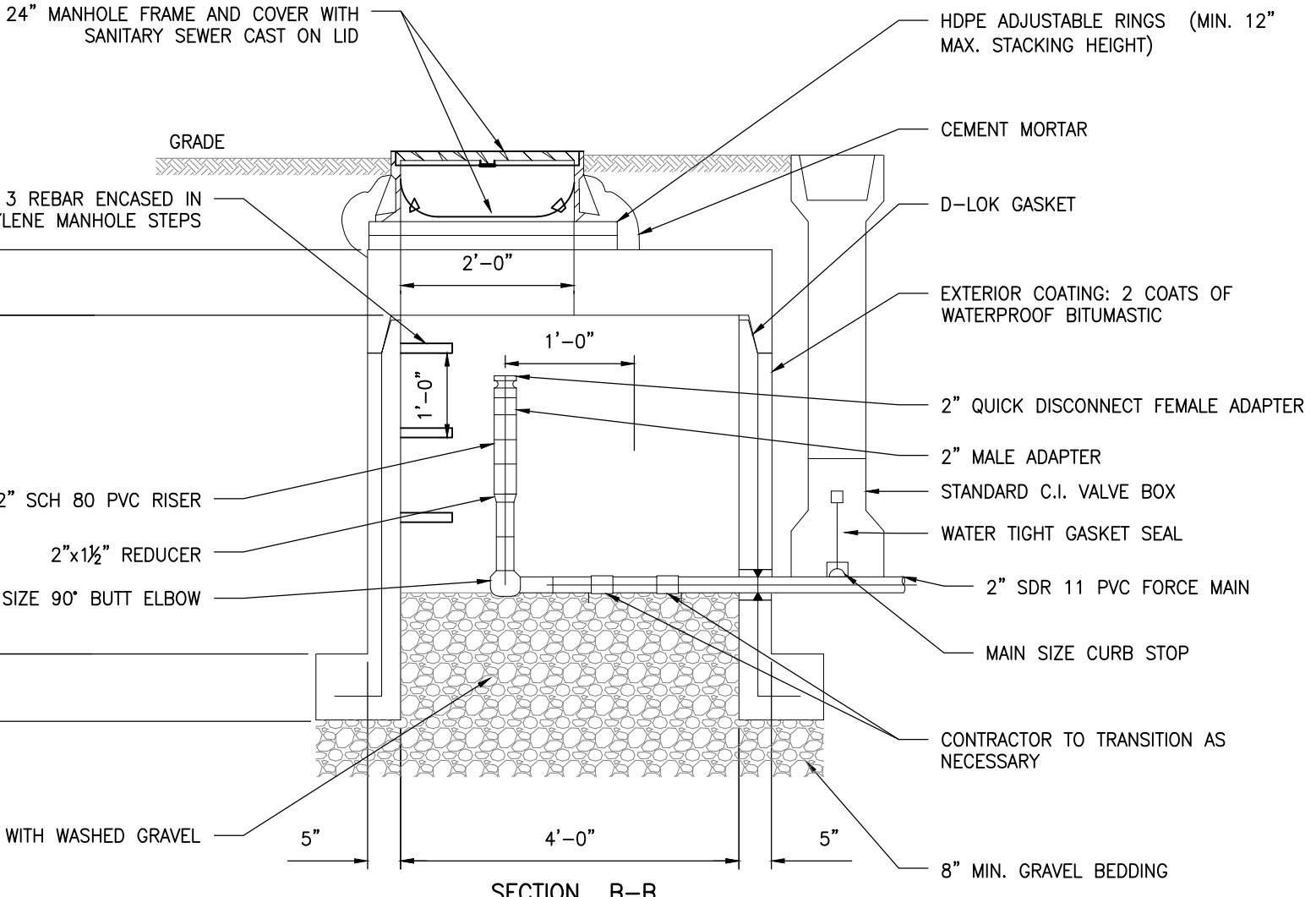
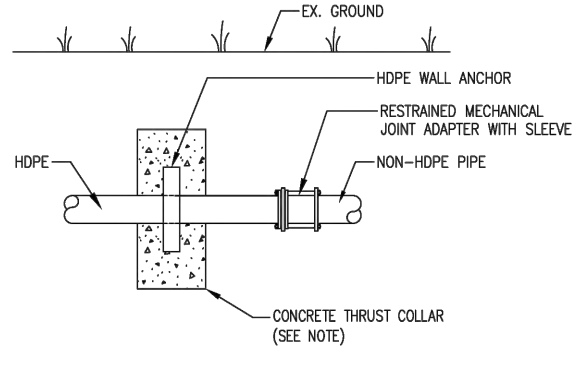
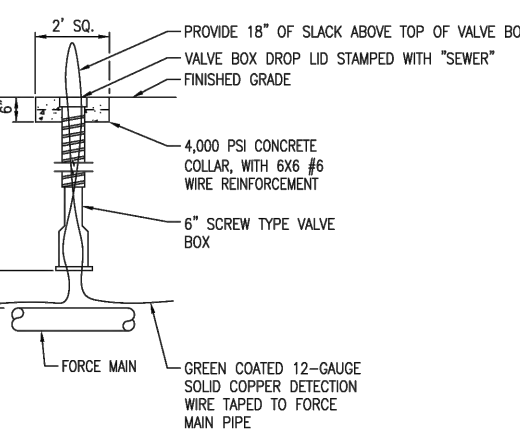
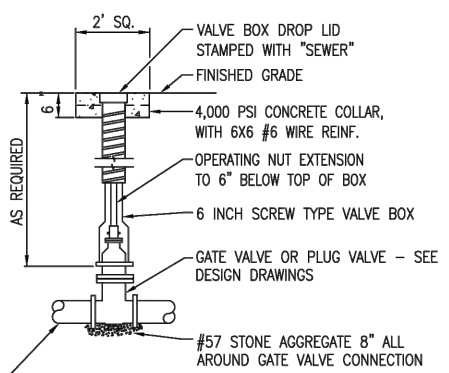
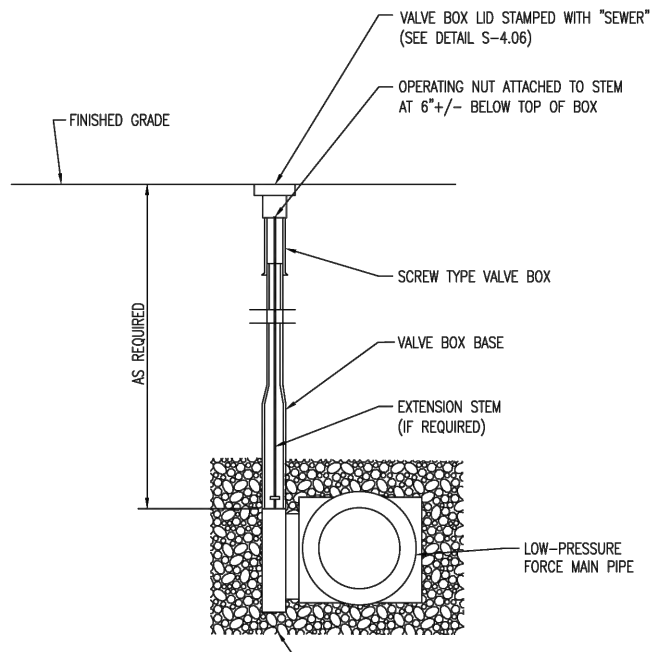
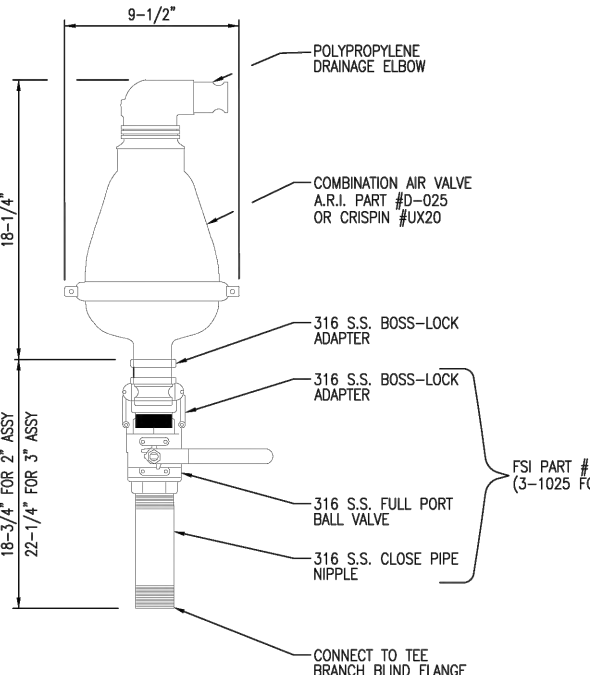
PENK-WHITE
0.20 INCHES (5.1mm)

PENK-GRAY
0.27 INCHES (7.0mm)

PENK-BLACK
0.30 INCHES (7.6mm)



FORCE MAIN DIA.	ARM	TAP FLANGE
≤ 16"	2"	4"x3"
> 16"	3"	4"x3"



GMB

GEORGE, MILES & BUHR, LLC
ARCHITECTS & ENGINEERS
SAUSBURY • BALTIMORE • SEAFORD
206 WEST MAIN STREET
SALISBURY, MARYLAND 21801
410-762-3115, FAX 410-548-9790
www.gmbnet.com

AMERICANA BAYSIDE

Joshua M. Freeman
FOUNDATION

BALTIMORE HUNDRED

SUSSEX COUNTY, DELAWARE

FREEMAN ARTS
PAVILION PHASE 4
SEASON 2026
FORCE MAIN DETAILS

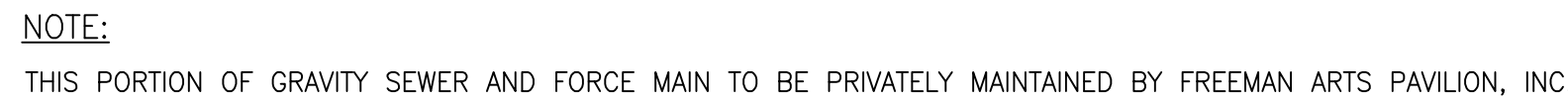
SCALE: AS NOTED
DESIGN BY: SLM
DRAWN BY: TMG
CHECKED BY: SLM
GMB FILE: 150078
DATE: APR 2025


SHEET NO.
C3.4

PRINTS ISSUED FOR:
REVIEW AND APPROVAL

DATE	REVISIONS	NO.
APRIL 2025	2026 CONSTRUCTION SET SEWER & FORCE MAIN DESIGN	55
09/09/2025	ADDED ANY DETAILS	A

© COPYRIGHT 2023 GEORGE, MILES & BUHR, LLC



 <h1 style="margin: 0;">FREEMAN ARTS PAVILION PHASE 4 SEASON 2026 UTILITY PROFILES SEWER</h1>	
SCALE : AS NOTED	SHEET NO.
DESIGN BY : SLM	<div style="font-size: 48px; font-weight: bold;">C5.0</div>
DRAWN BY : TMG	
CHECKED BY : SLM	
GMB FILE : 150078	
DATE : APR 2025	