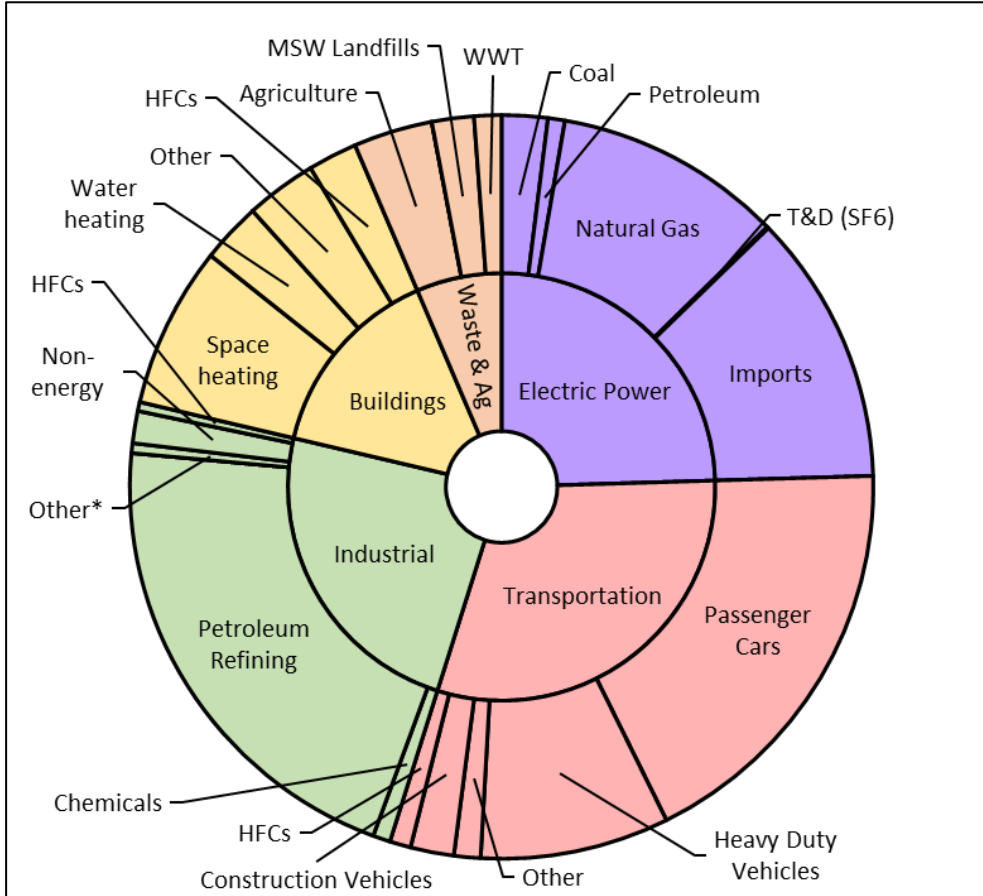


Delaware's 2018 Greenhouse Gas Inventory



The 2018 GHG Inventory for Delaware includes multi-sector estimates and projections from 1990 through 2050. In 2018, Delaware's annual GHG emissions were 16.89 million metric tons of CO₂e (MmtCO₂e). Greenhouse gas emissions increased by about 6% from 2017 and are projected to increase by another 8% by 2050. The inventory provides insight on the top emitting sectors and includes updates from the previous edition.

Delaware's 2018 GHG Emissions by Sector and End-uses



New Data Analyses

Sector emissions are broken down to subsectors and end-uses, as applicable.

Top-emitting sector trends:

1. Transportation: passenger cars and heavy duty vehicles make up over 87%
2. Industrial: petroleum refining operations make up about 88%
3. Electric Power: in-state generation make up about about 52% while emissions associated with using imported electricity were about 48%

What's New

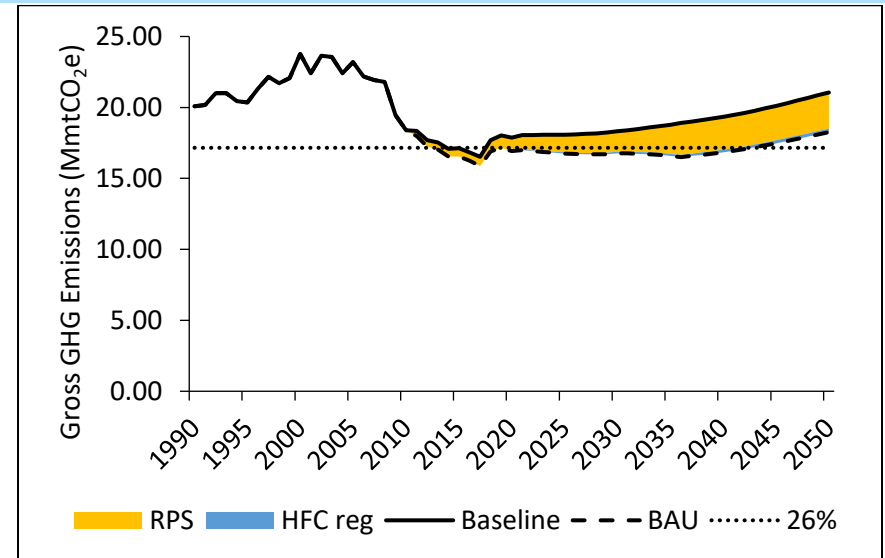
Electricity Consumption

Emission estimates related to the amount of electricity used in DE are now included in the annual total. Typically, between 30-55% of the electricity used in DE is generated outside of the state. Many other states use this approach, making this GHG inventory more consistent and accurate.

Emission Reductions from Policies

This inventory report includes estimated emission reductions from two key current climate policies: the renewable energy portfolio standards and the regulation on prohibition of specific high global warming potential hydrofluorocarbons.

GHG Emission Trends



Delaware is committed through the US Climate Alliance to reduce GHG emissions by 26-28% in 2025 from 2005 levels. With policy reductions, the target is met, but additional policies may be needed for long term reductions and mitigation of the harmful impacts of climate change.