



STATE OF DELAWARE  
DEPARTMENT OF NATURAL RESOURCES  
& ENVIRONMENTAL CONTROL  
DIVISION OF WATER RESOURCES  
20653 DUPONT BLVD  
UNIT 5  
GEORGETOWN, DE 19947

July 30, 2015

Sharon Cruz, PE  
Pennoni Associates Inc.  
18072 Davidson Drive  
Milton, DE 19968

RE: Approval of the Zoeller 912, Packaged Lift Station. (W/ Model 264 sewage pump)

Dear Ms. Cruz,

The Division of Water Resources has received and reviewed your request to approve the Zoeller 921 packaged lift station; to be used in conjunction with Class B or other gravity fed on-site wastewater treatment and disposal systems designed in Delaware. We are pleased to inform you that we are able to **approve** the lift station referenced above, provided that they are installed in accordance with the manufacturer's requirements and specific permit conditions.

Additionally, specific components (brands, model numbers, etc...) should be listed on permit insert sheet. It also should be noted that this pre-engineered lift station is designed to be used in a 24" diameter basin 36" tall supplied as part of the package from Zoeller. As a condition of this approval, no substitution of components is allowed without written approval from the design engineer and pre-approval from the Department.

If you have any other questions please contact me at 856-4561.

Sincerely,

A handwritten signature in blue ink that reads "James Cassidy".

James Cassidy  
Program Manager I  
Ground Water Discharges Section

Cc: file

*Delaware's good nature depends on you!*

**Pennoni**

PENNONI ASSOCIATES INC.  
CONSULTING ENGINEERS

18072 Davidson Drive  
Milton, DE 19968

Ph: 302-684-8030 • Fx: 302-684-8054 www.pennoni.com

July 9, 2015

Mr. James Cassidy  
DNREC Division of Water Resources  
20653 DuPont Boulevard, Unit 5  
Georgetown, DE 19947  
302-856-4561  
*Submitted Via Email: [James.Cassidy@state.de.us](mailto:James.Cassidy@state.de.us)*

**RE: Approval of the Zoeller 912 Package System Lift Station**

Dear Mr. Cassidy,

Pennoni Associates Inc. (Pennoni) is requesting product approval for pre-engineered lift station, manufactured by Zoeller Pump Company. The lift station package will be utilized in conjunction with Class C designed on-site wastewater treatment and disposal system (Permit Number 229942) to overcome elevation differences from an existing septic tank retrofitted with advanced pre-treatment unit to proposed gravity fed drain field.

Specifications for the 912 Package System Lift Station and Pre-Construction As-Built Plan are provided as an attachment to this letter.

Should you have any questions or need additional information, please do not hesitate to call.

Respectfully Submitted,



Sharon K. Cruz, P.E.  
Project Engineer

Providing Engineering Services Since 1966  
[www.pennoni.com](http://www.pennoni.com)

**Pennoni**  
PENNONI ASSOCIATES INC.  
CONSULTING ENGINEERS



PENNONI ASSOCIATES INC.  
CONSULTING ENGINEERS

**SEPTIC CALCULATIONS**



**Job #:** BECK1501  
**Calc'd by:** M.J.STALLINGS  
**Date:** 7/6/15

**Transmission Length** 96 ft.

**Type of System:** FULL DEPTH GRAVITY W/ LIFT STATION

**Orifice Head:**  ft.

**Total flow used:** 20 gpm

**Depth of discharge pipe:**  ft.  
**Static Head:** 1.83 ft.

**Check Head:**

**Pump:** Zoeller Model 264  
**Allowable TDH:**  ft.  
**Flow of:** 20 gpm  
**Allowable friction head:** 13.17 ft.

**Friction Head:**

**Transmission Diameter:**  in.  
**Head loss/100 ft.:** 0.86 ft./100 ft.  
**Length of Transmission:** 96 ft.  
**Multiplier for fittings:**   
**Transmission head loss:** 0.99 ft.

**Total friction head:** 0.99 ft.  
**% of allow. frict. head:** 7.5

**TDH:** 2.82 ft.



**PUMP COMPANY**

*Zoeller Family of Water Solutions*

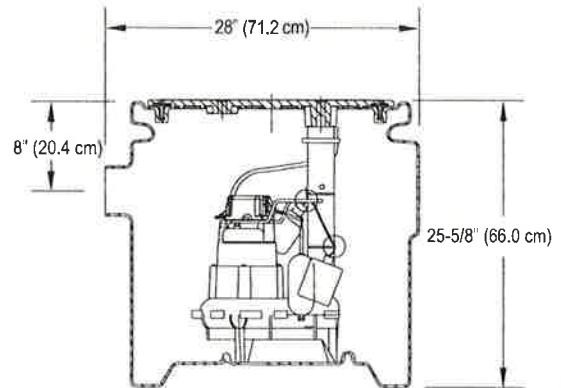
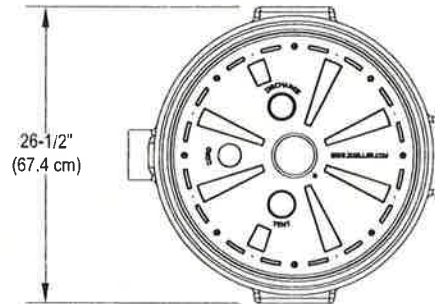
Product information presented here reflects conditions at time of publication. Consult factory regarding discrepancies or inconsistencies.

## TECHNICAL DATA SHEET 912 PACKAGE SYSTEMS

Preassembled sewage systems for fast installation.

### PUMP SPECIFICATIONS

<b>MOTOR</b>	Voltage	115
	Phase	1
	Hertz	60
	RPM	1400 or 2800
	Type	Split phase or permanent split capacitor
	Insulation	Class B
	Amps	4.4 - 8.5
	<b>PUMP</b>	Operation
Auto On / Off		Varies based on package
Discharge Size		2" NPT
Solids Handling		2" (50 mm) spherical solids
Cord Length		20' (6 m) standard
Max. Head		14' (4.3 m), 22" (6.7 m), 45.6' (13.9 m)
Max. Flow Rate		92 GPM (20.9 m³/hr), 106 GPM (24 m³/hr), 149 GPM (33.8 m³/hr)
Max. Operating Temp.		130°F (54°C)
Cooling		Oil filled
Motor Protection		Auto reset thermal overload
<b>MATERIALS</b>	Cap	Cast iron
	Motor Housing	Cast iron
	Pump Housing	Cast iron
	Base	Engineered plastic or cast iron
	Upper Bearing	Sleeve bearing
	Lower Bearing	Sleeve or ball bearing
	Mechanical Seals	Carbon/ceramic
	Impeller Type	Non-clogging vortex
	Impeller	Engineered plastic or bronze
	Hardware	Stainless steel
	Motor Shaft	1215 cold rolled steel, 1144 steel or JIS S45C steel
	Gasket	Neoprene



24" x 24" (61 x 61 cm) shown, 18" x 30" (46 x 76 cm) and 24" x 36" (61 x 91 cm) also available.

SK2694

### BASIN SPECIFICATIONS

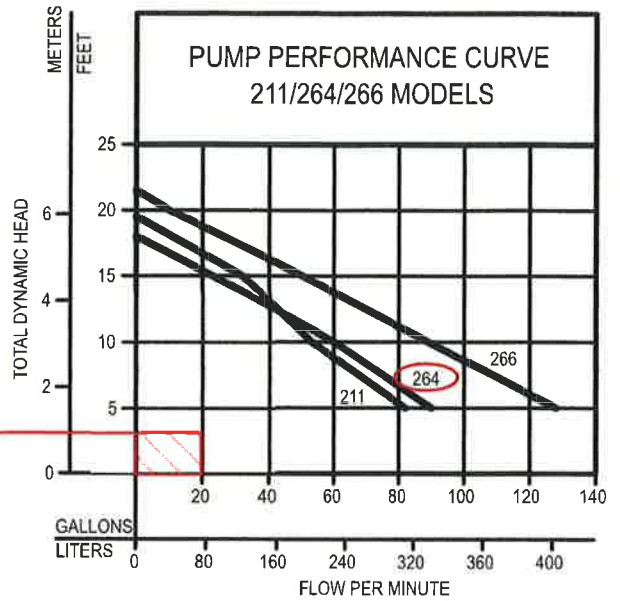
- Polyethylene basin
- Polyethylene structural foam cover with 2" vent and 2" discharge
- 41 gallon (155 liter) capacity (25 gallons [95 liters] below inlet)
- Integral foam seal



**WARNING** These systems are not designed for hazardous environments. Please consult factory for special options and requirements.

**TOTAL DYNAMIC HEAD  
FLOW PER MINUTE**

MODELS		211		264		266	
Feet	Meters	Gal.	Liters	Gal.	Liters	Gal.	Liters
5	1.5	82	310	90	341	128	484
10	3.0	53	201	60	227	89	337
15	4.6	32	121	23	87	50	189
20	6.1	-	-	-	-	10	38
Shut-off Head:		19.5 ft.(5.9m)		18 ft.(5.5m)		21.5 ft.(6.6m)	

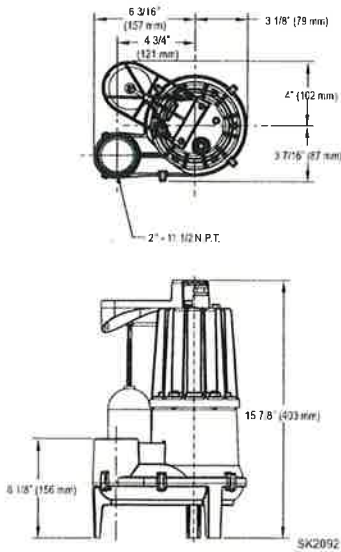


**DESIGN OPERATING POINT**  
PUMP FLOW GATED TO 20  
GPM MAXIMUM

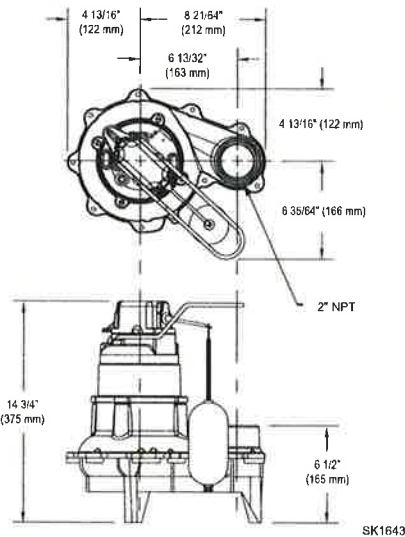
009969

**CAUTION** All installation of controls, protection devices and wiring should be done by a qualified licensed electrician. All electrical and safety codes should be followed including the most recent National Electrical Code (NEC) and the Occupational Safety and Health Act (OSHA).

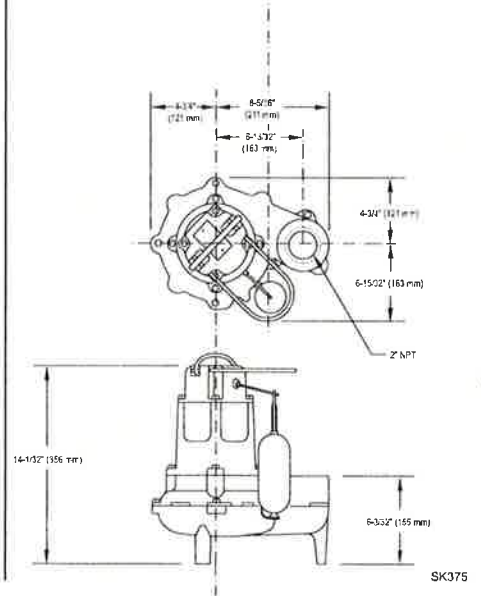
**MODEL 211**



**MODEL 264**



**MODEL 266**



See FM2787 (model 211), FM2788 (model 264), FM2789 (model 266) for complete pump specifications.

2" Vent P/N	3" Vent P/N	Pump	Basin Type	Basin Size	Weight Lbs / Kg
912-0073	—	M211	PSF-Standard	18" X 30" (45.7 x 76.2 cm)	39 / 18
* 912-0112	—		Polyethylene	24" x 24" (61 x 61 cm)	50 / 23
* 912-1112	—		Polyethylene w/ Alarm	24" x 24" (61 x 61 cm)	54 / 24
912-0007	912-0021	M264	PSF-Standard	18" X 30" (45.7 x 76.2 cm)	56 / 25
912-1007	—		PSF-Standard w/ Alarm	18" X 30" (45.7 x 76.2 cm)	59 / 27
912-0006	—		Polyethylene-10' (3 m) stack	18" X 30" (45.7 x 76.2 cm)	65 / 30
912-0061	—		PSF-Deluxe	18" X 30" (45.7 x 76.2 cm)	59 / 27
912-0069	—		Polyethylene-w/ Integral Side Vent	18" X 30" (45.7 x 76.2 cm)	50 / 23
912-0086	—		Premium PSF w/ AFD	18" X 30" (45.7 x 76.2 cm)	64 / 29
912-1086	—		Premium PSF w/ AFD & Alarm	18" X 30" (45.7 x 76.2 cm)	67 / 30
* 912-0114	—		Polyethylene	24" x 24" (61 x 61 cm)	73 / 33
* 912-1114	—		Polyethylene w/ Alarm	24" x 24" (61 x 61 cm)	75 / 34
* 912-0078	—		PSF-Deluxe	24" X 36" (61 x 91.4 cm)	82 / 37
912-0074	—		BN211 with Piggyback Variable Level Float Switch	PSF-Standard	18" X 30" (45.7 x 76.2 cm)
* 912-0113	—	Polyethylene		24" x 24" (61 x 61 cm)	50 / 23
* 912-1113	—	Polyethylene w/ Alarm		24" x 24" (61 x 61 cm)	54 / 24
912-0005	912-0029	BN264 with Piggyback Variable Level Float Switch	PSF-Standard	18" X 30" (45.7 x 76.2 cm)	56 / 25
912-1005	—		PSF-Standard w/ Alarm	18" X 30" (45.7 x 76.2 cm)	59 / 27
** 912-0016	—		Fiberglass-10' (3 m) stack, LA code	18" X 30" (45.7 x 76.2 cm)	78 / 35
912-0055	—		Polyethylene w/ Integral Side Vent	18" X 30" (45.7 x 76.2 cm)	50 / 23
912-1055	—		Polyethylene w/ Integral Side Vent w/ Alarm	18" X 30" (45.7 x 76.2 cm)	53 / 24
912-0065	—		PSF-Deluxe	18" X 30" (45.7 x 76.2 cm)	59 / 27
912-0087	—		Premium PSF w/ AFD	18" X 30" (45.7 x 76.2 cm)	64 / 29
912-1087	—		Premium PSF w/ AFD & Alarm	18" X 30" (45.7 x 76.2 cm)	67 / 30
* 912-0115	—		Polyethylene	24" x 24" (61 x 61 cm)	73 / 33
* 912-1115	—		Polyethylene w/ Alarm	24" x 24" (61 x 61 cm)	75 / 34
* 912-0080	—		PSF-Deluxe	24" X 36" (61 x 91.4 cm)	82 / 37
* 912-1080	—	PSF-Deluxe w/ Alarm	24" X 36" (61 x 91.4 cm)	85 / 39	
912-0010	912-0025	M266	PSF-Standard	18" X 30" (45.7 x 76.2 cm)	61 / 28
912-1010	—		PSF-Standard w/ Alarm	18" X 30" (45.7 x 76.2 cm)	64 / 29
912-0012	—		Fiberglass-Standard	18" X 30" (45.7 x 76.2 cm)	74 / 34
912-0063	—		PSF-Deluxe	18" X 30" (45.7 x 76.2 cm)	64 / 29
912-0070	—		Polyethylene-w/ Integral Side Vent	18" X 30" (45.7 x 76.2 cm)	55 / 25
912-0088	—		Premium PSF w/ AFD	18" X 30" (45.7 x 76.2 cm)	69 / 31
912-1088	—		Premium PSF w/ AFD & Alarm	18" X 30" (45.7 x 76.2 cm)	72 / 33
* 912-0116	—		Polyethylene	24" x 24" (61 x 61 cm)	76 / 34
* 912-1116	—		Polyethylene w/ Alarm	24" x 24" (61 x 61 cm)	78 / 35
* 912-0079	—		PSF-Deluxe	24" X 36" (61 x 91.4 cm)	87 / 39
912-0017	912-0033	BN266 with Piggyback Variable Level Float Switch	PSF-Standard	18" X 30" (45.7 x 76.2 cm)	61 / 28
912-1017	—		PSF-Standard w/ Alarm	18" X 30" (45.7 x 76.2 cm)	64 / 29
912-0018	—		Polyethylene-10' (3 m) stack	18" X 30" (45.7 x 76.2 cm)	67 / 30
912-0019	—		Fiberglass-Standard	18" X 30" (45.7 x 76.2 cm)	75 / 34
** 912-0020	—		Fiberglass-10' (3 m) stack, LA code	18" X 30" (45.7 x 76.2 cm)	79 / 36
912-0056	—		Polyethylene w/ Integral Side Vent	18" X 30" (45.7 x 76.2 cm)	55 / 25
912-1056	—		Polyethylene w/ Integral Side Vent w/ Alarm	18" X 30" (45.7 x 76.2 cm)	58 / 26
912-0067	—		PSF-Deluxe	18" X 30" (45.7 x 76.2 cm)	64 / 29
912-1067	—		PSF-Deluxe w/ Alarm	18" X 30" (45.7 x 76.2 cm)	67 / 30
912-0089	—		Premium PSF w/ AFD	18" X 30" (45.7 x 76.2 cm)	69 / 31
912-1089	—		Premium PSF w/ AFD & Alarm	18" X 30" (45.7 x 76.2 cm)	72 / 33
* 912-0117	—		Polyethylene	24" x 24" (61 x 61 cm)	76 / 34
* 912-1117	—		Polyethylene w/ Alarm	24" x 24" (61 x 61 cm)	78 / 35
* 912-0081	—		PSF-Deluxe	24" X 36" (61 x 91.4 cm)	87 / 39
* 912-1081	—	PSF-Deluxe w/ Alarm	24" X 36" (61 x 91.4 cm)	90 / 41	

PSF: Polyethylene structural foam    AFD: Anti-flotation device    Standard: includes a rubber inlet grommet    Deluxe: includes a plastic inlet combo hub    Premium: includes a split cover and AFD  
\* 24" x 24" (61 x 61 cm) and 24" X 36" (61 x 91.4 cm) shipped individually    \*\* 4" Cast Iron Hub on LA Code Systems

Side Discharge Basins P/N	Pump	Basin Type	Basin Size	Weight Lbs / Kg
912-0082	M264	PSF	18" X 30" (45.7 x 76.2 cm)	61 / 28
912-1082		PSF w/ Alarm	18" X 30" (45.7 x 76.2 cm)	66 / 30
912-0090		Premium PSF w/ AFD	18" X 30" (45.7 x 76.2 cm)	72 / 33
912-1090		Premium PSF w/ AFD & Alarm	18" X 30" (45.7 x 76.2 cm)	72 / 33
912-0083	BN264 w/ Piggyback Variable Level Float Switch	PSF	18" X 30" (45.7 x 76.2 cm)	62 / 28
912-1083		PSF w/ Alarm	18" X 30" (45.7 x 76.2 cm)	67 / 30
912-0091		Premium PSF w/ AFD	18" X 30" (45.7 x 76.2 cm)	72 / 33
912-1091		Premium PSF w/ AFD & Alarm	18" X 30" (45.7 x 76.2 cm)	76 / 34
912-0084	M266	PSF	18" X 30" (45.7 x 76.2 cm)	62 / 28
912-1084		PSF w/ Alarm	18" X 30" (45.7 x 76.2 cm)	67 / 30
912-0092		Premium PSF w/ AFD	18" X 30" (45.7 x 76.2 cm)	73 / 33
912-1092		Premium PSF w/ AFD & Alarm	18" X 30" (45.7 x 76.2 cm)	76 / 34
912-0085	BN266 w/ Piggyback Variable Level Float Switch	PSF	18" X 30" (45.7 x 76.2 cm)	63 / 29
912-1085		PSF w/ Alarm	18" X 30" (45.7 x 76.2 cm)	68 / 30
912-0093		Premium PSF w/ AFD	18" X 30" (45.7 x 76.2 cm)	73 / 33
912-1093		Premium PSF w/ AFD & Alarm	18" X 30" (45.7 x 76.2 cm)	77 / 35

PSF: Polyethylene structural foam    AFD: Anti-flotation device    Standard: includes a rubber inlet grommet    Deluxe: includes a plastic inlet combo hub    Premium: includes a split cover and AFD

## PACKAGING

18" x 30" (45.7 x 76.2 cm) Simplex systems are shipped four units to a skid. 24" x 36" (61 x 91.4 cm) are shipped individually. All units are properly secured with a 2" (DN 50) PVC discharge pipe in the basins to avoid shifting or upsetting the pump and switch mechanism. Float switch is secured with tape that is easily removed through the inlet hub opening. Premium basins have torque stops for prevention of shipping damage to the pump. All other systems are packaged with environment-safe peanuts that are water soluble - no need to remove.

## SYSTEMS INCLUDE

- 2" (50 mm) solids handling pump
- 2" (50 mm) PVC discharge pipe, 30" (76 cm) long (24" [61 cm] long on 24" X 24" [61 x 61 cm]) and (36" [91.4 cm] long on 24" X 36" [61 x 91 cm])
- Basins - polyethylene, poly-foam or fiberglass construction with poly or solid steel covers and 4" pipe seal hub, 4" PVC hub (deluxe) or 4" cast iron hub on L.A. Code Systems
- Check valve options - 30-0151, 30-0020, 30-0021, 30-0101 or 30-0103 (not included)
- Systems available with alarms and preinstalled alarm float.
- Premium indoor systems have a split cover for easy pump inspection, torque stops and an anti-flotation device.
- Side discharge systems rated for outdoor burial: solid polyethylene structural foam lid and basin with 2" discharge on side
- 3/16" (5 mm) vent hole drilled
- (1) 2" (50 mm) solids sewage ejector
- (1) 24" x 24" (61 x 61 cm) poly molded basin
- (1) PSF cover with 2V2D

Your Peace of Mind is Our Top Priority®

Product information presented here reflects conditions at time of publication. Consult factory regarding discrepancies or inconsistencies.



**PUMP COMPANY**

Zoeller Family of Water Solutions

SECTION: 2.20.020

FM2788

0515

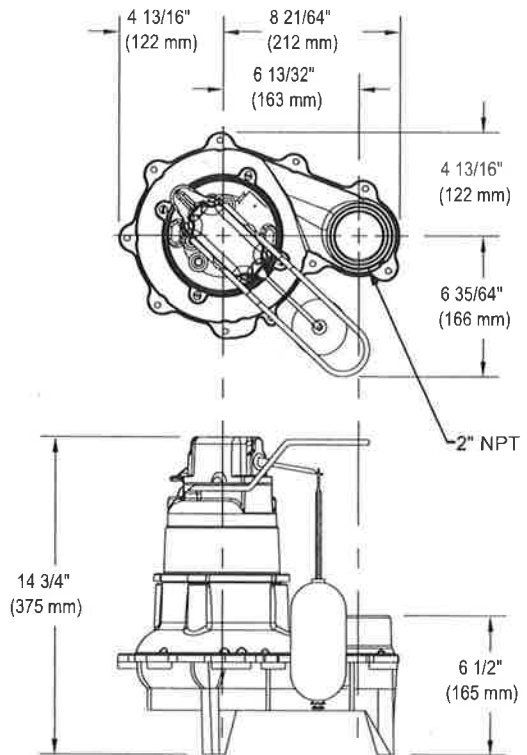
Supersedes

0814

## TECHNICAL DATA SHEET WASTE-MATE SERIES Model 264 Sewage/Effluent or Dewatering Pumps

### PRODUCT SPECIFICATIONS

<b>MOTOR</b>	Horse Power	4/10
	Voltage	115 or 230
	Phase	1 Ph
	Hertz	60 Hz
	RPM	1725
	Type	Permanent split capacitor
	Insulation	Class B
	Amps	4.7 - 9.4
	<b>PUMP</b>	Operation
Auto On/Off Points		12-1/2" (31.8 cm) / 4-1/2" (11.4 cm)
Discharge Size		2" NPT
Solids Handling		2" (50 mm) spherical solids
Cord Length		15' (5 m) standard
Cord Type		UL listed cord and plug
Max. Head		18' (5.5 m)
Max. Flow Rate		90 GPM (341 LPM)
Max. Operating Temp.		130° F (54° C)
Cooling		Oil filled
Motor Protection		Auto reset thermal overload
<b>MATERIALS</b>		Cap
	Motor Housing	Cast iron
	Pump Housing	Cast iron
	Base	Engineered plastic
	Upper Bearing	Sleeve bearing
	Lower Bearing	Sleeve bearing
	Mechanical Seals	Carbon and ceramic
	Impeller Type	Non-clogging vortex
	Impeller	Engineered plastic
	Hardware	Stainless steel
	Motor Shaft	A151 1215 Steel
	Gasket	Neoprene or Buna-N
	Min. Basin Size	Simplex: 18" x 30" (45.7 x 76.2 cm) Duplex: 30" x 36" (76.2 x 91.4 cm)



S1643

NOTE: The sizing of effluent systems normally requires variable level float(s) controls and properly sized basins to achieve required pumping cycles or dosing timers with nonautomatic pumps.

NOTE: See model comparison chart for specific details.



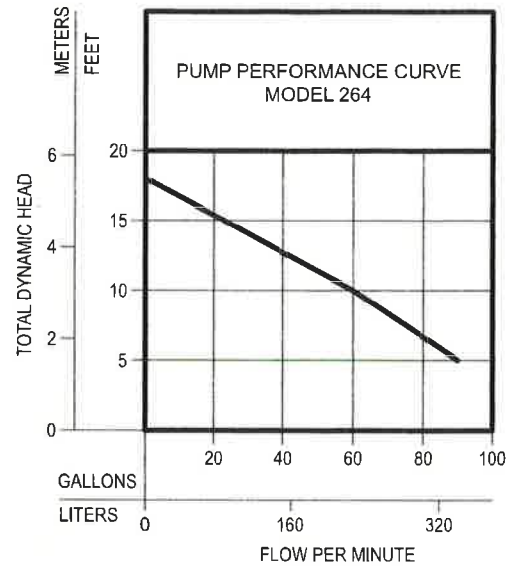
© Copyright 2015 Zoeller Co. All rights reserved.

502-778-2731 | 800-928-7867 | 3649 Cane Run Road | Louisville, KY 40211-1961 | www.zoeller.com



## TOTAL DYNAMIC HEAD FLOW PER MINUTE

MODEL		264	
Feet	Meters	Gallons	Liters
5	1.5	90	341
10	3.0	60	227
15	4.6	23	87
Shut-off Head:		18 ft (5.5 m)	



**PUMP FLOW GATED TO 20 GPM MAXIMUM**

009931

Model	MODEL COMPARISON										
	Seal	Mode	Volts	Ph	Amps	HP	Hz	Lbs	Kg	Simplex	Duplex
M264	Single	Auto	115	1	9.4	4/10	60	35.5	16.0	1	4
N264	Single	Non	115	1	9.4	4/10	60	34.5	15.6	2 or 3	4
*BN264	Single	Auto	115	1	9.4	4/10	60	40.0	18.0	--	--
D264	Single	Auto	230	1	4.7	4/10	60	35.5	16.0	1	4
E264	Single	Non	230	1	4.7	4/10	60	34.5	15.6	2 or 3	4
*BE264	Single	Auto	230	1	4.7	4/10	60	40.0	18.0	--	--

\*Single piggyback switch included.

Additional cord lengths are available in 25' (8 m) and 35' (11 m). 50' (15 m) cords are available for 230 V units only.

### SELECTION GUIDE

1. Integral float-operated mechanical switch, no external control required.
2. For automatic use single piggyback variable level float switch or double piggyback variable level float switch. Refer to FM0477.
3. See FM1228 for correct model of simplex control panel.
4. See FM0712 for correct model of duplex control panel or FM1663 for a residential alternator system.

### CONSULT FACTORY FOR SPECIAL APPLICATIONS

- Electrical alternators for duplex systems available with variable level float switches
- Minimum recommended basin size  
Simplex - 18"x30" (45.7 x 76.2 cm)  
Duplex - 30"x36" (76.2 x 91.4 cm)
- Standard automatic - weight 35.5 lbs. (16.1 kg)
- High water alarms available
- Mechanical alternators available for duplex systems
- For "M" and "D" models, the approximate volume pumped per cycle are:

Tank Diameter	Volume Pumped
18" (45.7 cm) Simplex	8 Gallons (30 liters)
24" (61 cm) Simplex	15 Gallons (57 liters)
30" (76.2 cm) Duplex	22 Gallons (83 liters)
36" (91.4 cm) Duplex	33 Gallons (125 liters)
48" (121.9 cm) Duplex	60 Gallons (227 liters)

**CAUTION** Maximum temperature of sewage or dewatering must be limited to 130°F (54°C). For over 130°F (54°C), special quotation required.

**CAUTION** All installation of controls, protection devices and wiring should be done by a qualified licensed electrician. All electrical and safety codes should be followed including the most recent National Electrical Code (NEC) and the Occupational Safety and Health Act (OSHA).

# TANK ALERT® AB Alarm System

Easy-to-install liquid level alarm system with auto-reset and battery backup features for indoor use.

This alarm system monitors liquid levels in lift pump chambers, sump pump basins, holding tanks, sewage, agricultural, and other water applications.

The Tank Alert® AB alarm system can serve as a high or low level alarm depending on the float switch model used.

The alarm horn sounds when a potentially threatening liquid level condition occurs. The horn can be silenced, but the alarm light remains on until the condition is remedied. Once the condition is cleared, the alarm will automatically reset.

A green "Power On" light indicates 120 VAC primary power to the alarm. Low battery chirp feature indicates when battery should be replaced.



## FEATURES

- NEMA 1 enclosure, designed for ease of installation, rated for indoor use.
- Automatic alarm reset.
- Red "alarm" light and green "power on" light, alarm "test" switch, and horn "silence" switch.
- Alarm horn sounds at 87 decibels at 10 feet (3 meters).
- Can be used with any UL Listed / Recognized switching mechanism rated to include 1 amp, 9 VDC load.
- If primary power fails, the alarm system continues to work due to battery backup feature. (Battery not included.)
- Complete package includes standard SJE SignalMaster® control switch with 15 feet (4.57 meters) of cable (other lengths available) and mounting clamp.
- Switching mechanism operates on low voltage and is isolated from the power line to reduce the possibility of shock.
- Low battery chirp.
- Easy access battery compartment.
- External terminal block for easy float switch installation.
- CSA Certified.
- UL Listed.
- Five-year limited warranty.



## OPTIONS

When ordered with the alarm, this system is available with:

- alternate float switch models for high or low level warning.
- auxiliary dry normally open and normally closed contacts. (Tank Alert® AB with auxiliary contacts included is CSA certified only.)
- splice kit.

## SPECIFICATIONS

### VOLTAGE FOR 120 VAC MODEL:

Primary: 120 VAC, 60 Hz, 2.4 watts max. (alarm condition)  
Secondary: 9 VDC

### BATTERY BACKUP POWER: 9 VDC

**ALARM ENCLOSURE:** 6 x 4 x 2.25 inch (15.24 x 10.16 x 5.71 cm), NEMA 1 plastic.

**ALARM HORN:** 87 decibels at 10 feet (3 meters)

**POWER CORD:** 6 foot (1.8 meter)

### FLOAT SWITCH CONNECTION TERMINAL:

For float switch connection only. Do not apply power. (Voltage across terminals is 8-9 VDC).

**FLOAT SWITCH:** SJE SignalMaster® control switch with mounting clamp

**Cable:** 15 feet (4.57 meters), flexible 18 gauge, 2 conductor (UL) SJOW, water-resistant (CPE)

**Float:** 2.74 inch diameter x 4.83 inch long (7.0 cm x 12.3 cm), high impact, corrosion resistant polypropylene housing for use in sewage and water up to 140°F (60°C)

### AUXILIARY ALARM CONTACTS (OPTIONAL):

(CSA certified only unit)

**Voltage:** 120 VAC

**Current:** 5 amps maximum N/O  
3 amps maximum N/C

**SJE Rhombus**

PO Box 1708, Detroit Lakes, MN 56502

1-888-DIAL-SJE • 1-218-847-1317

1-218-847-4617 Fax

email: customer.service@sjerhombus.com

[www.sjerhombus.com](http://www.sjerhombus.com)

SEE BACKSIDE FOR ORDERING INFORMATION.

# TANK ALERT® AB Alarm System

Easy-to-install liquid level alarm system with auto-reset and battery backup features for indoor use.

## ORDERING INFORMATION

120 VAC		List Price	Shipping Weight
Part #	Description		
1011421	TA AB-01H (120 VAC w/15' SJE SignalMaster® High Level)	\$106.38	2.73 lbs.
1011424	TA AB-01L (120 VAC w/15' SJE SignalMaster® Low Level)	\$106.38	2.73 lbs.
1011422	TA AB-01H (120 VAC w/15' Sensor Float® High Level)	\$109.93	2.81 lbs.
1011423	TA AB-01X (120 VAC no float)	\$78.32	1.44 lbs.
1012668	TA AB-01HAUX (120 VAC w/15' SJE SignalMaster® High Level & Auxiliary Contacts)	\$124.10	2.75 lbs
1021932	TA AB-01XAUX (120 VAC no float w/Auxiliary Contacts)	\$96.04	1.46 lbs

H = High Level L = Low Level X = No Float AUX = Auxiliary Contacts

MASTER CARTON holds 16 boxed units.

## OPTIONS

### CONTROL SWITCH OPTIONS

The Tank Alert® AB alarm system comes standard with a 15ft SJE SignalMaster® control switch with mounting clamp. Other float switches are available. See control switch section of the catalog.

To determine the price of alarm with an alternate float, add the price of the part number with "no float" to the price of the float switch.



## SPECIFICATIONS

### VOLTAGE FOR 120 VAC MODEL:

Primary: 120 VAC, 50/60 Hz, 2.4 watts max. (alarm condition)

Secondary: 9 VDC

BATTERY BACKUP POWER: 9 VDC

ALARM ENCLOSURE: 6 x 4 x 2.25 inches (15.24 x 10.16 x 5.71 cm), NEMA 1 plastic

ALARM HORN: 87 decibels at 10 feet (3 meters)

AUXILIARY ALARM CONTACTS (OPTIONAL): 120 VAC, 5 amps max N/O, 3 amp max N/C (CSA certified only unit)

POWER CORD: 6 foot (1.8 meter)

FLOAT SWITCH CONNECTION TERMINAL: for float switch connection only (voltage across terminals is 8-9 VDC)

FLOAT SWITCH: SJE SignalMaster® control switch with mounting clamp

CABLE: 15 feet (4.57 meters), flexible 18 gauge, 2 conductor (UL SJOW, water resistant (CPE)

FLOAT: 2.74 inch diameter x 4.83 inch long (7.0 cm x 12.3 cm), high impact, corrosion resistant polypropylene housing for use in sewage and water up to 140°F (60°C)

## OTHER INFORMATION

Option	Description	Price
AUX	Auxiliary Alarm Contacts (CSA certified unit, factory installed)	\$17.72

Call or fax your order!

1-888-DIAL-SJE (1-888-342-5753) ■ Fax 218-847-4617

Product offering and pricing are subject to change without notice.  
Please visit [www.sjrhombus.com](http://www.sjrhombus.com) for the most current information.

**SJE**  
**Rhombus**

[www.sjrhombus.com](http://www.sjrhombus.com)  
[customer.service@sjrhombus.com](mailto:customer.service@sjrhombus.com)