



STATE OF DELAWARE
DEPARTMENT OF NATURAL RESOURCES &
ENVIRONMENTAL CONTROL
DIVISION OF WATER
21309 Berlin Road, Suite 2
GEORGETOWN, DELAWARE 19947

February 11, 2019

Kim Yanaitis.
Septic Solutions, LLC
13 Charles Point
Newark, DE 19702-2227

RE: Approval of the Strab-Towers Concrete 5x5 Pre-Engineered Lift Station

Dear Ms. Yanaitis,

The Division of Water Resources has received and reviewed your request to approve your Strab-Towers Concrete 5x5 pre-engineered lift station; to be used in conjunction with Class B designed on-site wastewater treatment and disposal systems in Delaware. We are pleased to inform you that we are able to approve the lift station referenced above, provided that they are installed in accordance with the designers proposed components and specific permit conditions.

Additionally, specific components (brands, model numbers, etc...) should be listed on permit insert sheet. As a condition of this approval, no substitution of components is allowed without written approval from the design engineer and pre-approval from the Department.

If you have any other questions please contact me at 856-4561.

Sincerely,

A handwritten signature in blue ink, appearing to read "Jim Cassidy".

James Cassidy
Program Manager I
Ground Water Discharges Section

Cc: file

Delaware's good nature depends on you!

SEPTIC SOLUTIONS, LLC

13 Charles Pointe
Newark, DE 19702-2227
(302) 438-7498
kyanaitis@comcast.net

October 30, 2018

James Cassidy
DNREC
21309 Berlin Road
Georgetown, DE 19947

RE: PRE-ENGINEERED LIFT STATION
STRAB – CONCRETE 5X5

Dear Jim,

Enclosed please find the design package for a pre-engineered lift station.

This design consists of:
Concrete 5' x 5' pump tank
Goulds 3885 Model WE0311L pump
SJE Pumpmaster Plus Pump Switch
Tank Alert XT Alarm System

Please review the design at your earliest convenience. If you should have any questions or require additional information, please do not hesitate to contact me.

Sincerely,



Kimberly A. Yanaitis, P.E.

PROJECT NAME:

STRAB - CONCRETE 5x5
LIFT PUMP PACKAGE

Date: 10/30/2018
Design: KAY
Page: 1 of 2

300 LF TRANSMISSION LINE, 18' STATIC HEAD

AVERAGE FLOW:

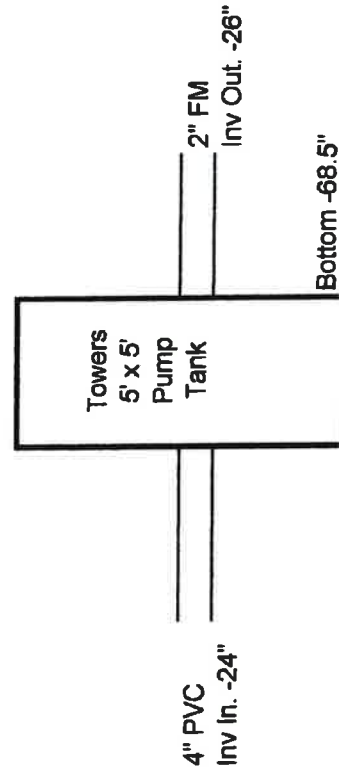
600 GPD (0.42 GPM)

FORCE MAIN SIZE:

$D_{max} = 0.404 \cdot \sqrt[4]{Q \text{ peak}}$
 $D_{max} = 0.404 \cdot \sqrt[4]{Q(0.42 \text{ GPM})}$
 $D_{max} = 0.26"$

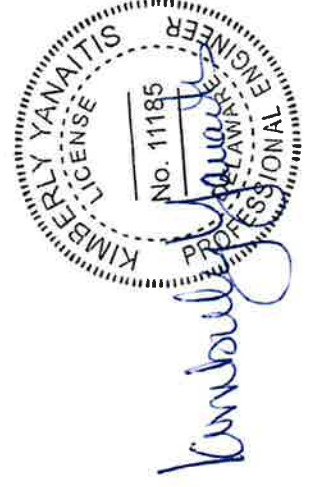
Use 2" SCHD 40 PVC

GRADE 0"



H.W.L. -50.75 "
PUMP ON -56.75 "
PUMP OFF -58.5 "
BOTTOM -68.5 "

STATIC HEAD: SH = HIGH POINT - PUMP OFF
SH = 18 FT



PIPE AND FITTING SCHEDULE

Date: 10/30/2018
Design: KAY
Page: 2 of 2

Q (GPM)	2" STEEL		2" PVC (SDR-21)	
	V ² / 2G	Hf (ft/100 ft)	V ² / 2G	Hf (ft/100 ft)
20	0.0568	0.868	0.05031	0.63
			FITTING	K-VALUE
			2" CHECK VALVE	0.04
			2" GATE VALVE	0.16
			2" 90 BEND	1.00
			2" 45 BEND	0.32

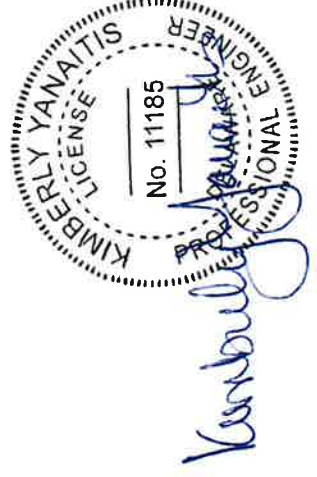
Note: K-values per Supplement to NCC Std. Spec
Construction Section 35.16, Part 5
Sample Designs for Sewage Pumping Stations

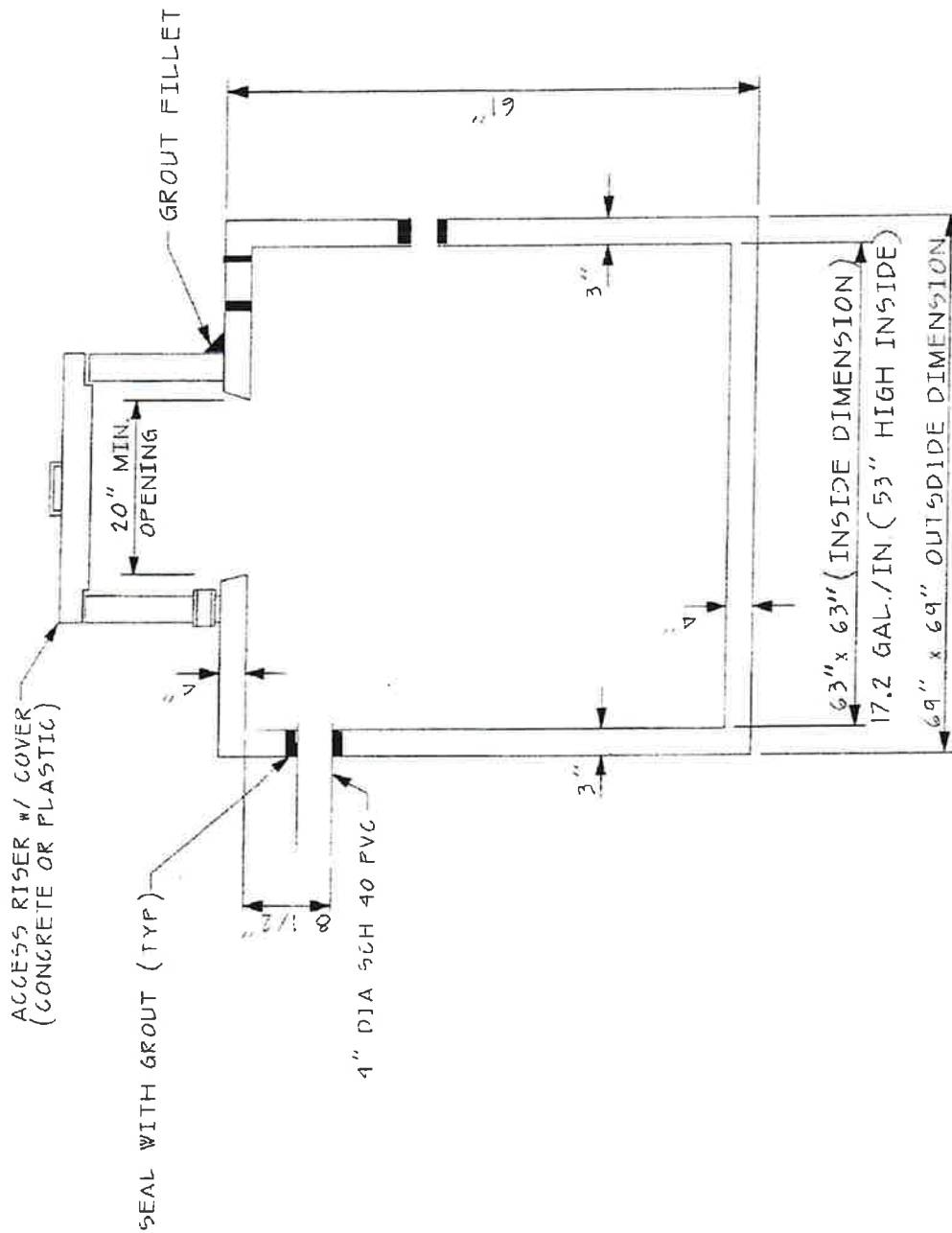
LOSSES

20 GPM	2" CHECK VALVE (STEEL)	1	*	0.0568	*	0.04	=	0.00227
	2" GATE VALVE (STEEL)	1	*	0.0568	*	0.16	=	0.00909
	2" 90 BEND (STEEL)	1	*	0.0568	*	1.00	=	0.05680
	2" 45 BEND (PVC)	5	*	0.05031	*	0.32	=	0.08050
	2" STEEL FM	4	*	0.868	(/100)		=	0.03472
	2" PVC FM	300	*	0.63	(/100)		=	1.89000
	STATIC HEAD						=	18.00
	TOTAL							20.07

WET WELL VOLUME (TOWERS CONCRETE 5' X 5')

PUMP ON TO PUMP OFF = 1.75"
VOLUME = 30.1 GAL (Per Tower's Specifications - 17.2 gal/inch)





ELEVATION VIEW

5' x 5' PRECAST TANK

TOWERS CONCRETE
PRODUCTS, INC.
26425 HOBBS ROAD
DENTON, MD 21629
410-479-0914

DATE: 4/27/11

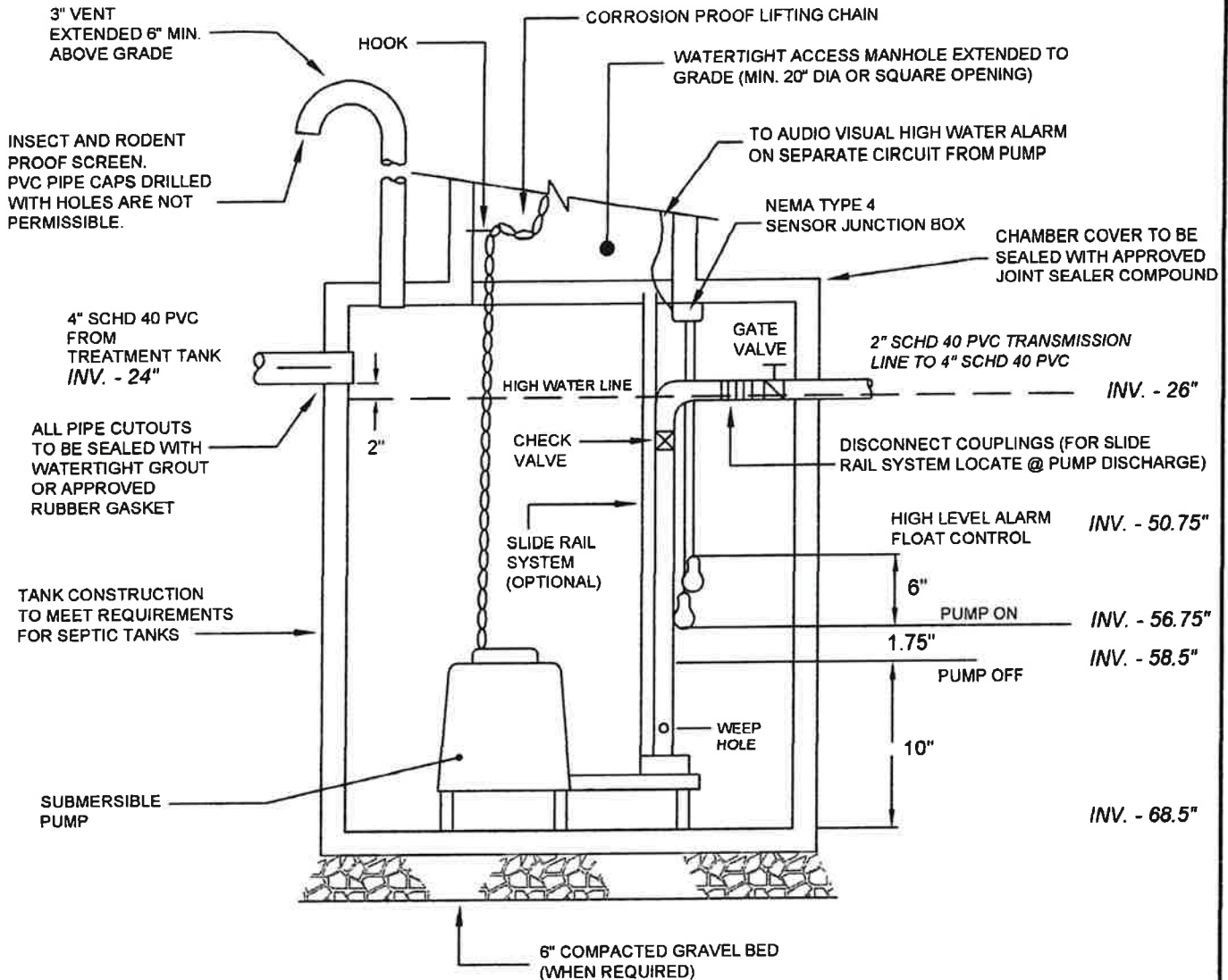
SCALE: NTS

SHEET

▶ DENOTES REVISED ITEMS

GRADE 0" (ASSUMED)

MAX. FM LENGTH = 300'
MAX. VERTICAL LIFT = 18'



TYPICAL DIMENSIONS (OD / ID)

LENGTH: 69" / 63"
WIDTH: 69" / 63"
HEIGHT: 61" / 53"
HEIGHT TO INLET: 44.5"
VOLUME: 17.2 GAL / INCH

NOTES:

- EXCAVATION LIMITS SHALL EXTEND AT LEAST 2 FEET BEYOND TANK PERIMETER.
- ALL PIPE TO BE SCHEDULE 40 PVC.
- CHAMBER TO BE SIZED ACCORDING TO REQUIREMENTS OF DOSING VOLUME AND STORAGE. SEE EXHIBIT I.
- ALL DOSING CHAMBER COMPONENTS SHALL BE FIELD TESTED TO INSURE ACCURACY, WATER TIGHTNESS AND PROPER OPERATION OF ALL PUMPS AND ALARM CONTROLS.
- ALL ELECTRICAL CONNECTIONS SHALL BE WATERPROOF, CORROSION RESISTANT AND EXPLOSION PROOF.

USING GATE VALVE, ADJUST
FLOW FOR APPROX. 20 GPM
(1 GAL / 3 SEC)

PARTS LIST

PUMP: GOULDS MODEL 3885, WE0311L, 1/3 HP,
1 PHASE, 115 V, 1750 RPM
CONTROL PANEL: TANK ALERT XT
FLOAT: SJE PUMPMaster PLUS PUMP SWITCH

TOWERS 5' X 5'
PRE-ENGINEERED LIFT STATION
(N.T.S.)

STRAB - CONCRETE 5X5



Wastewater

APPLICATIONS

Specifically designed for the following uses:

- Homes, Farms, Trailer Courts, Motels, Schools, Hospitals, Industry, Effluent Systems

SPECIFICATIONS

Pump

- Solids handling capabilities: $\frac{3}{4}$ " maximum
- Discharge size: 2" NPT
- Capacities: up to 140 GPM
- Total heads: up to 128 feet TDH
- Temperature: 104°F (40°C) continuous, 140°F (60°C) intermittent.
- See order numbers on reverse side for specific HP, voltage, phase and RPM's available.

MOTORS

- Fully submerged in high-grade turbine oil for lubrication and efficient heat transfer.
- Class B insulation on $\frac{1}{2}$ - 1½ HP models.
- Class F insulation on 2 HP models.

Single phase (60 Hz):

- Capacitor start motors for maximum starting torque.
- Built-in overload with automatic reset.

- SJTOW or STOW severe duty oil and water resistant power cords.
- $\frac{1}{2}$ - 1 HP models have NEMA three prong grounding plugs.
- 1½ HP and larger units have bare lead cord ends.

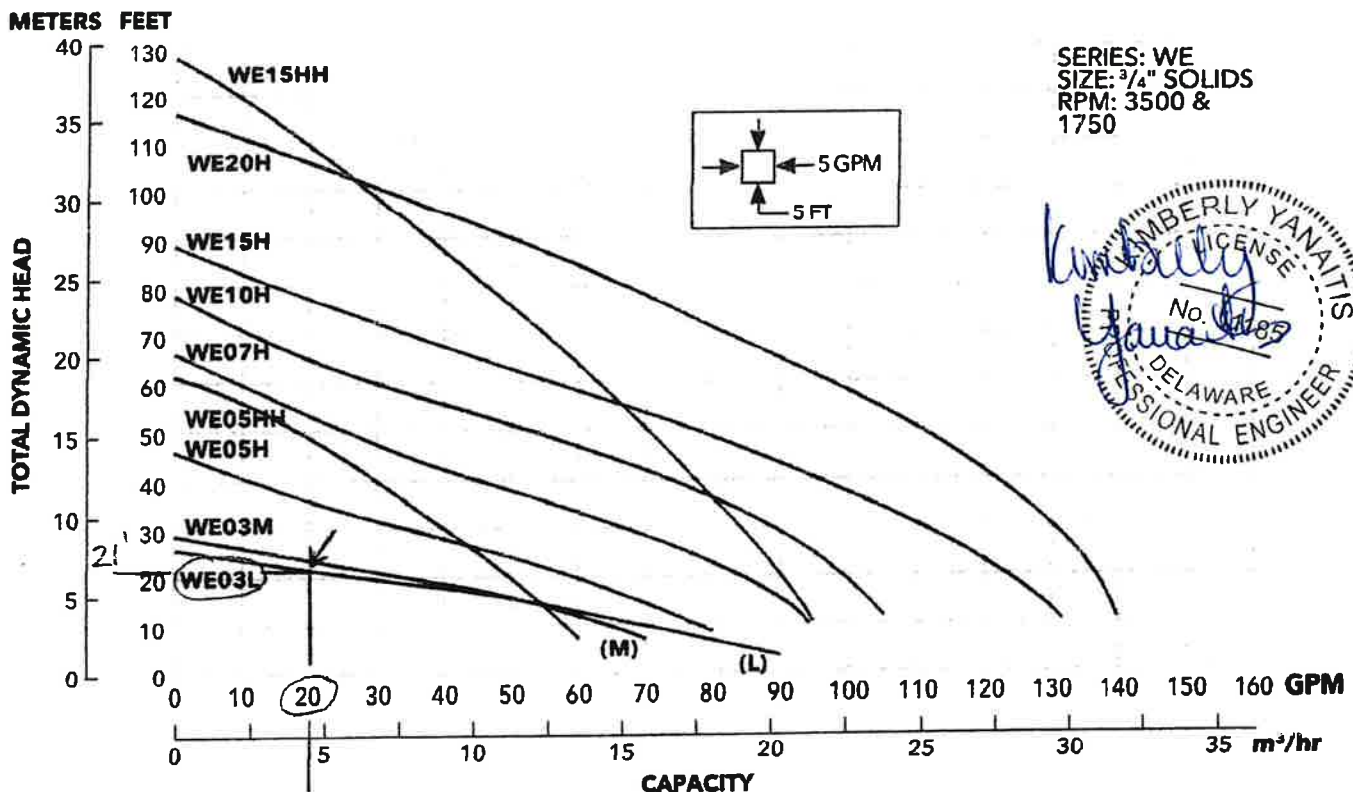
Three phase (60 Hz):

- Class 10 overload protection must be provided in separately ordered starter unit.
- STOW power cords all have bare lead cord ends.
- Designed for Continuous Operation: Pump ratings are within the motor manufacturer's recommended working limits, can be operated continuously without damage when fully submerged.
- Bearings: Upper and lower heavy duty ball bearing construction.
- Power Cable: Severe duty rated, oil and water resistant. Epoxy seal on motor end provides secondary moisture barrier in case of outer jacket damage and to prevent oil wicking. Standard cord is 20'. Optional lengths are available.
- O-ring: Assures positive sealing against contaminants and oil leakage.

AGENCY LISTINGS



Tested to UL 778 and CSA 22.2 108 Standards
By Canadian Standards Association File #LR38549



Wastewater

MODELS

Order Number	HP	Phase	Volts	RPM	Impeller Diameter (in.)	Maximum Amps	Locked Rotor Amps	KVA Code	Full Load Efficiency %	Resistance		Power Cable Size	Weight (lbs.)		
										Start	Line-Line				
WE0311L	0.33	1	115	1750	5.38	10.7	30.0	M	54	11.9	1.7	16/3	56		
WE0318L			208			6.8	19.5	K	51	9.1	4.2				
WE0312L			230			4.9	14.1	L	53	14.5	8.0				
WE0311M			115			10.7	30.0	M	54	11.9	1.7				
WE0318M			208			6.8	19.5	K	51	9.1	4.2				
WE0312M			230			4.9	14.1	L	53	14.5	8.0				
WE0511H	0.5	1	115	3450	3.56	14.5	46.0	M	54	7.5	1.0	14/3	60		
WE0518H			208			8.1	31.0	K	68	9.7	2.4	16/3			
WE0512H			230			7.3	34.5	M	53	9.6	4.0	14/4			
WE0538H			3			200	4.9	22.6	R	68	NA			3.8	
WE0532H						230	3.3	18.8	R	70	NA			5.8	
WE0534H						460	1.7	9.4	R	70	NA			23.2	
WE0537H		575			1.4	7.5	R	62	NA	35.3					
WE0511HH		1	115		3.88	14.5	46.0	M	54	7.5	1.0	14/3		14/4	
WE0518HH			208			8.1	31.0	K	68	9.7	2.4	16/3			
WE0512HH			230			7.3	34.5	M	53	9.6	4.0	14/4			
WE0538HH			3			200	4.9	22.6	R	68	NA				3.8
WE0532HH						230	3.6	18.8	R	70	NA				5.8
WE0534HH						460	1.8	9.4	R	70	NA				23.2
WE0537HH		575			1.5	7.5	R	62	NA	35.3					
WE0718H		0.75	1		208	4.06	11.0	31.0	K	68	9.7	2.4		14/3	70
WE0712H					230		10.0	27.5	J	65	12.2	2.7		14/4	
WE0738H			3		200		6.2	20.6	L	64	NA	5.7			
WE0732H					230		5.4	15.7	K	68	NA	8.6			
WE0734H					460		2.7	7.9	K	68	NA	34.2			
WE0737H					575		2.2	9.9	L	78	NA	26.5			
WE1018H	1	1	208	4.44	14.0	59.0	K	68	9.3	1.1	14/3	80			
WE1012H			230		12.5	36.2	J	69	10.3	2.1	14/4				
WE1038H		3	200		8.1	37.6	M	77	NA	2.7					
WE1032H			230		7.0	24.1	L	79	NA	4.1					
WE1034H			460		3.5	12.1	L	79	NA	16.2					
WE1037H			575		2.8	9.9	L	78	NA	26.5					
WE1518H	1.5	1	208	4.56	17.5	59.0	K	68	9.3	1.1	14/3	80			
WE1512H			230		15.7	50.0	H	68	11.3	1.6	14/4				
WE1538H		3	200		10.6	40.6	K	79	NA	1.9					
WE1532H			230		9.2	31.7	K	78	NA	2.9					
WE1534H			460		4.6	15.9	K	78	NA	11.4			14/4		
WE1537H			575		3.7	13.1	K	75	NA	16.9					
WE1518HH		1	208	5.50	17.5	59.0	K	68	9.3	1.1	14/3		14/4		
WE1512HH			230		15.7	50.0	H	68	11.3	1.6					
WE1538HH		3	200		10.6	40.6	K	79	NA	1.9					
WE1532HH			230		9.2	31.7	K	78	NA	2.9					
WE1534HH			460		4.6	15.9	K	78	NA	11.4					
WE1537HH			575		3.7	13.1	K	75	NA	16.9					
WE2012H		2	1	230	5.38	18.0	49.6	F	78	3.2	1.2		14/3	83	
WE2038H				200		12.0	42.4	K	78	NA	1.7		14/4		
WE2032H			3	230		11.6	42.4	K	78	NA	1.7				
WE2034H				460		5.8	21.2	K	78	NA	6.6				
WE2037H	575			4.7		16.3	L	78	NA	10.5					

SJE PUMPMASTER® PLUS Pump Switch

Mechanically-activated, wide-angle switch designed for direct control of pumps up to 3/4 HP at 120 VAC and 2 HP at 230 VAC.

This mechanically-activated, wide-angle pump switch provides automatic control of pumps in:

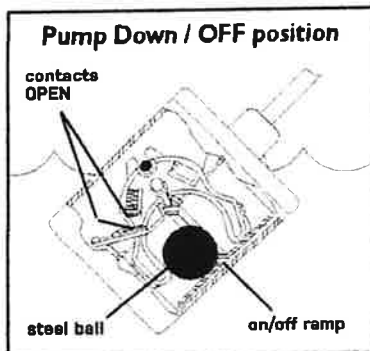
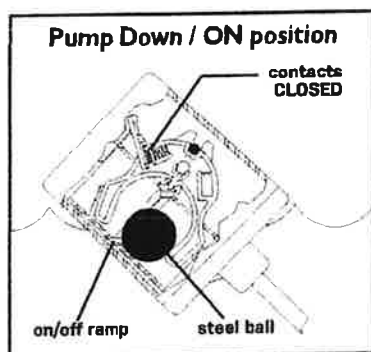
- water
- sewage applications

The SJE PumpMaster® Plus pump switch is not sensitive to rotation or turbulence allowing it to be used in both calm and turbulent applications.



FEATURES

- Heavy-duty contacts.
- Controls pumps up to 3/4 HP at 120 VAC and 2 HP at 230 VAC.
- Adjustable pumping range of 7 to 36 inches (18 to 91 cm).
- Includes standard mounting clamp and boxed packaging.
- UL Recognized for use in water and sewage.
- CSA Certified.
- Five-year limited warranty.



OPTIONS

This switch is available:

- for pump down or pump up applications as specified by part number.
- with a 120 VAC or 230 VAC piggy-back plug.
- without a plug for direct wiring in 120 VAC or 230 VAC applications.
- in standard cable lengths of 10, 15, 20, or 30 feet and 3, 5, 6, or 10 meters (longer lengths available).

SPECIFICATIONS

CABLE: flexible 14 gauge, 2 conductor (UL, CSA) SJOW, water-resistant (CPE)

FLOAT: 3.05 inch diameter x 3.56 inch long (7.75 x 9.04 cm) high impact, corrosion resistant, PVC housing for use in sewage and water up to 140°F (60°C)

ELECTRICAL:

120 VAC 50/60Hz Single Phase:

Maximum Pump Running Current:

15 amps

Maximum Pump Starting Current:

85 amps

Recommended Pump HP:

3/4 HP or less

230 VAC 50/60Hz Single Phase:

Maximum Pump Running Current:

15 amps

Maximum Pump Starting Current:

85 amps

Recommended Pump HP:

2 HP or less

NOTE: This switch must be used with pumps that provide integral thermal overload protection.



SJE RHOMBUS

PO Box 1708, Detroit Lakes, MN 56502

1-888-DIAL-SJE • 1-218-847-1317

1-218-847-4617 Fax

email: customer.service@sjeinc.com

www.sjerrhombus.com

F.5

**SEE REVERSE SIDE FOR ORDERING INFORMATION.
SEE PRICE BOOK FOR LIST PRICE.**

SJE PUMPMASTER® PLUS Pump Switch

Mechanically-activated, wide-angle switch designed for direct control of pumps up to 3/4 HP at 120 VAC and 2 HP at 230 VAC.

ORDERING INFORMATION

PUMP DOWN ↓		PUMP UP ↑		Shipping Weight
Part#	Description	Part#	Description	
1003232	10PMPD1WP	1003237	10PMPU1WP	1.88 lbs.
1003233	10PMPD2WP	1003239	10PMPU2WP	1.92 lbs.
1003235	10PMPDWOP	1003241	10PMPUWOP	1.73 lbs.
1003243	15PMPD1WP	1003249	15PMPU1WP	2.23 lbs.
1003245	15PMPD2WP	1003251	15PMPU2WP	2.23 lbs.
1003247	15PMPDWOP	1003253	15PMPUWOP	2.13 lbs.
1036797	15PMPD1WP-QF	-	-	2.50 lbs.
1003255	20PMPD1WP	1003261	20PMPU1WP	2.57 lbs.
1003257	20PMPD2WP	1003263	20PMPU2WP	2.61 lbs.
1003259	20PMPDWOP	1003265	20PMPUWOP	2.49 lbs.
1003267	30PMPD1WP	1003273	30PMPU1WP	3.38 lbs.
1003269	30PMPD2WP	1003275	30PMPU2WP	3.41 lbs.
1003271	30PMPDWOP	1003277	30PMPUWOP	3.30 lbs.

D = Pump Down U = Pump Up 1 = 120VAC 2 = 230VAC

WP = With Plug WOP = With Out Plug QF = Quick Fit (CSA Certified Only)

NOTE: Descriptions are grouped by cable length measured in feet (10, 15, 20, 30).

SEE PRICE BOOK FOR LIST PRICE.

OPTIONS

MOUNTING CLAMP
Is standard - deduct optional

CABLE WEIGHT MOUNTING
Is also available.

PACKAGING
Boxed - standard
Bagged - optional
Bulk - optional

ADDITIONAL CABLE
Longer cable lengths available. Please call for details.

UL Recognized for Water & Sewage



LR64246



SPECIFICATIONS

PUMPING RANGE: 7 to 36 inches (18 cm to 91 cm)

CABLE: flexible 14 gauge, 2 conductor (UL, CSA) SJOW, water-resistant (CPE)

FLOAT: 3.05 inch diameter x 3.56 inch long (7.75 cm x 9.04 cm), high impact, corrosion resistant, PVC housing for use in sewage and water up to 140°F (60°C)

ELECTRICAL:

Voltage 60Hz/80Hz Single Phase	Max. Pump Run Current	Max. Pump Start Current	Recommended Pump HP
120 VAC	15 amps	85 amps	3/4 HP or less
230 VAC	15 amps	85 amps	2 HP or less

NOTE: This switch must be used with pumps that provide integral thermal overload protection.

OTHER INFORMATION

PUMP DOWN is normally open contacts for emptying in water or sewage applications.

PUMP UP is normally closed contacts for filling in water or sewage applications.

DIRECT WIRING

Units used for direct wiring (without plug) may be used in either 120 VAC or 230 VAC applications within specified amp ratings.

Call or fax your order!

1-888-DIAL-SJE (1-888-342-5753) • Fax 218-847-4617

Product offering and pricing are subject to change without notice.
Please visit www.sjerhombus.com for the most current information.



SJE RHOMBUS

www.sjerhombus.com
customer.service@sjeinc.com

9500104D
© SJE Rhombus 04/18

TANK ALERT® XT Alarm System

Versatile, indoor or outdoor liquid level alarm system.

This alarm system monitors liquid levels in lift pump chambers, sump pump basins, holding tanks, sewage, agricultural, and other water applications.

The **Tank Alert® XT** indoor/outdoor alarm can serve as a high or low level alarm depending on the float switch model used.

The alarm horn sounds and the red beacon illuminates when a potentially threatening liquid level condition occurs. The horn can be silenced, but the alarm light remains on until the condition is remedied. Once the condition is cleared, the alarm will automatically reset.

A "power on" light on the switch indicates power to the alarm panel.



FEATURES

- Enclosure meets Type 3R water-tight standard.
- Automatic alarm reset, horn silence switch, and alarm test switch.
- Alarm horn sounds at 85 decibels at 10 feet (3 meters).
- Alarm system (when installed on separate circuit) operates even if pump circuit fails.
- Complete package includes standard SJE SignalMaster® control switch with 15 feet (4.57 meters) of cable (other lengths available) and mounting clamp.
- UL Listed for indoor or outdoor use.
- CSA Certified.
- Five-year limited warranty.



OPTIONS

When ordered with the alarm, the system is available with:

- alternate float switch models for high or low liquid level warning.
- auxiliary dry normally open contacts for easy attachment of remote devices.
- premounted terminal block so enclosure can also be used as a junction box for splicing pump, pump switch, and pump power. Meets NEC standard for junction boxes.
- 6 foot (1.8 meter) power cord and liquid-tight connectors.

SPECIFICATIONS

VOLTAGE: 120 VAC, 50/60 Hz

ALARM ENCLOSURE: 6.5 x 4.5 x 3.0 inch (16.51 x 11.43 x 7.62 cm), indoor-outdoor, weatherproof, thermoplastic meets Type 3R water-tight standard

ALARM HORN: 85 decibels at 10 feet (3 meters), meets Type 3R water-tight standard as installed by factory

ALARM BEACON: UL Listed, Type 4x beacon assembly

TEST/SILENCE SWITCH: certified to IP66 and IP68 standards

AUXILIARY ALARM CONTACTS (OPTIONAL): 120 VAC, 5 amps max., 50/60 Hz

PRE-MOUNTED TERMINAL BLOCK (OPTIONAL): 20 amps, 120/230 VAC

POWER CORD (OPTIONAL): 6 foot (1.8 meter) cord with 120 VAC plug

FLOAT SWITCH: SJE SignalMaster® control switch with mounting clamp

Cable: 15 feet (4.57 meters), flexible 18 gauge, 2 conductor (UL) SJOW, water-resistant (CPE)

Float: 2.74 inch diameter x 4.83 inch long (7 cm x 12.3 cm), high impact, corrosion resistant polypropylene housing for use in sewage and non-potable water up to 140°F (60°C)



SJE RHOMBUS.

PO Box 1708, Detroit Lakes, MN 56502

1-888-DIAL-SJE • 1-218-847-1317

1-218-847-4617 Fax

email: customer.service@sjeinc.com

www.sjerrhombus.com

D.13

SEE REVERSE SIDE FOR ORDERING INFORMATION.
SEE PRICE BOOK FOR LIST PRICE.

TANK ALERT® XT Alarm System

Versatile indoor or outdoor liquid level alarm system.

ORDERING INFORMATION

STANDARD ALARM (120 VAC)		Shipping Weight
Part#	Description	
1009923	TAXT-01H (120 VAC w/15' SJE SignalMaster® High Level)	3.00 lbs.
1010251	TAXT- 01L (120 VAC w/15' SJE SignalMaster® Low Level)	3.00 lbs.
1004442	TAXT-01H (120 VAC w/15' SJE Sensor Float® High Level)	3.00 lbs.
1005140	TAXT-01L (120 VAC w/15' SJE Sensor Float® Low Level)	3.00 lbs.
1005141	TAXT-01X (120 VAC no float)	1.50 lbs.

STANDARD ALARM (120 VAC) with Terminal Block		Shipping Weight
Part#	Description	
1012416	TAXT-01HAUXTB (120 VAC w/15' SJE SignalMaster® High Level Auxiliary Contacts TB)	3.50 lbs.
1022241	TAXT-01HTB (120 VAC w/15' SJE SignalMaster® High Level TB)	2.00 lbs.
1005481	TAXT-01HTB (120 VAC w/15' Sensor Float® High Level TB)	3.50 lbs.
1005835	TAXT-01LTB (120 VAC w/15' Sensor Float® Low Level TB)	3.50 lbs.
1005836	TAXT-01XTB (120 VAC no float TB)	2.00 lbs.
1009214	TAXT-01HAUXTB (120 VAC w/15' Sensor Float® High Level Auxiliary Contacts TB)	3.50 lbs.

STANDARD ALARM (120 VAC) with Options		Shipping Weight
Part#	Description	
1006850	TAXT-01HAUX (120 VAC w/15' Sensor Float® High Level & Aux Con)	3.50 lbs.
1006690	TAXT-01HPC (120 VAC w/15' Sensor Float® High Level Power Cord)	3.50 lbs.

H = High Level L = Low Level X = No Float TB = Includes Terminal Block PC = Power Cord

AUX = Auxiliary Contacts **MASTER CARTON holds 12 boxed units.**

SEE PRICE BOOK FOR LIST PRICE.

SPECIFICATIONS

VOLTAGE: 120 VAC, 50/60 Hz

ALARM ENCLOSURE: 6.5 x 4.5 x 3 inches (16.51 x 11.43 x 7.62 cm), indoor -outdoor, weatherproof, thermoplastic, meets Type 3R water-tight standard

ALARM HORN: 85 decibels at 10 feet (3 meters), meets Type 3R water-tight standard as installed by factory

ALARM BEACON: UL Listed, Type 4X beacon assembly

TEST/SILENCE SWITCH: certified to IP66 and IP68 standards

AUXILIARY ALARM CONTACTS (OPTIONAL): 120 VAC, 5 amps max., 50/60 HZ

PRE-MOUNTED TERMINAL BLOCK (OPTIONAL): 20 amps, 120/230 VAC

POWER CORD: (optional) 6 foot (1.8 meters) cord with 120 VAC plug

FLOAT SWITCH: SJE SignalMaster® control switch with mounting clamp

CABLE: 15 feet (4.57 meters), flexible 18 gauge, 2 conductor (UL) SJOW, water-resistant (CPE)

FLOAT: 2.74 inch diameter x 4.83 inch long (7 cm x 12.3 cm), high impact, corrosion resistant polypropylene housing for use in sewage and non-potable water up to 140°F (60°C)

MAXIMUM WATER DEPTH: 30 feet (9 meters), 13 psi

ELECTRICAL: 5 amps, 125 VAC/250 VAC, 50/60 Hz

Call or fax your order!

1-888-DIAL-SJE (1-888-342-5753) • Fax 218-847-4617

Product offering and pricing are subject to change without notice.
Please visit www.sjerrhombus.com for the most current information.

OPTIONS

CONTROL SWITCH OPTIONS

The Tank Alert® XT alarm system comes standard with a 15 foot **SJE SignalMaster®** control switch with mounting clamp. Other float switches are available. See control switch section of the catalog.

To determine the price of alarm with an alternate float, add the price of the part number with "no float" to the price of the float switch.

UL Listed for Water & Sewage



OTHER INFORMATION

Option	Description
AUX	Auxiliary Alarm Contacts (factory installed)
PC	6 foot power cord with two RCC8 1/2 inch liquid-tight connectors



SJE RHOMBUS.

www.sjerrhombus.com
customer.service@sjinc.com