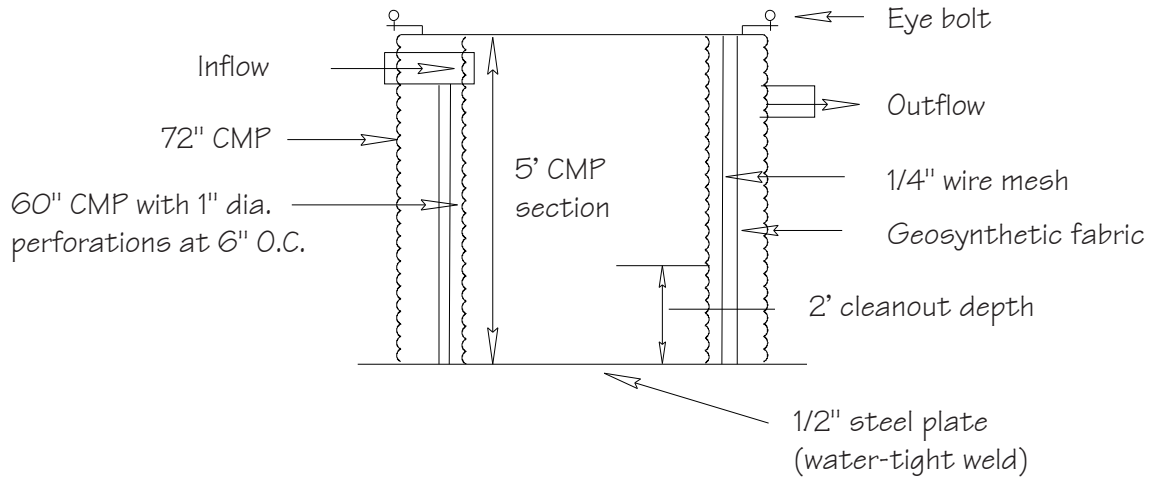
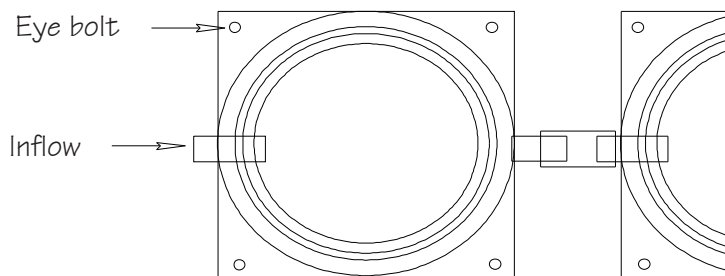


Standard Detail & Specifications

Portable Sediment Tank



Section



Plan

Construction Notes:

1. Required storage volume = 1 c.f. storage/1 gpm pump discharge.
2. Tanks may be connected in series to provide required storage.

Source:

Adapted from
MD Stds. & Specs. for ESC

Symbol:



Detail No.

DE-ESC-3.2.1.1

Sheet 1 of 1

Effective July 2023