

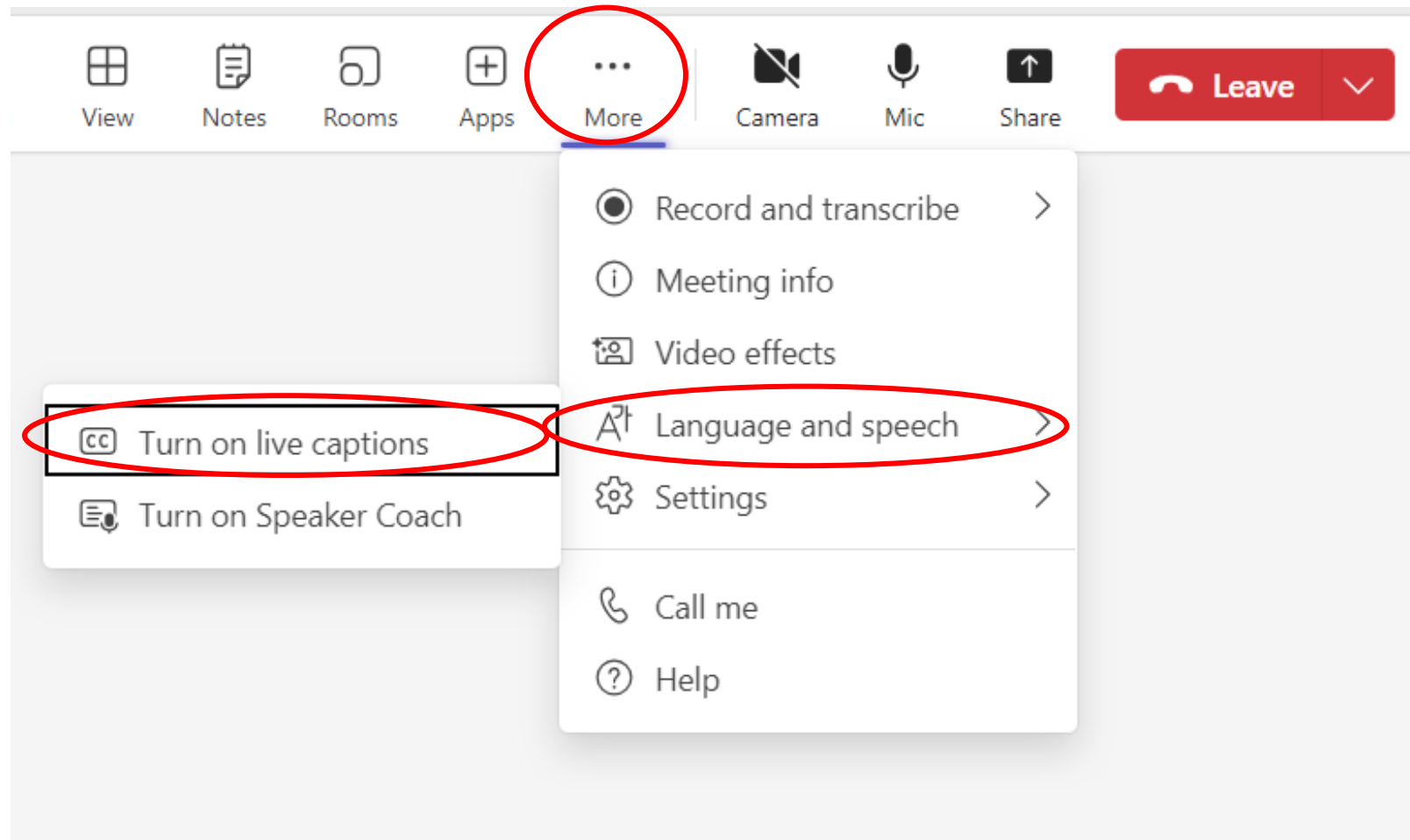
Economic Analysis for Shoreline Management

Community Information Meeting
September 26th, 2024, 6pm

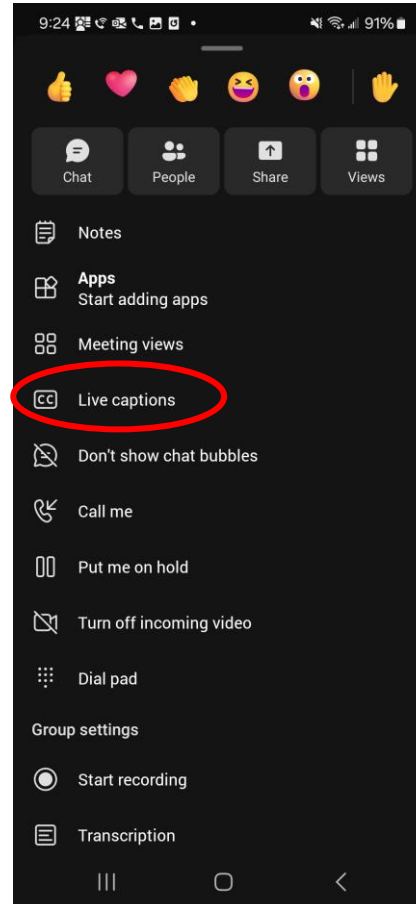
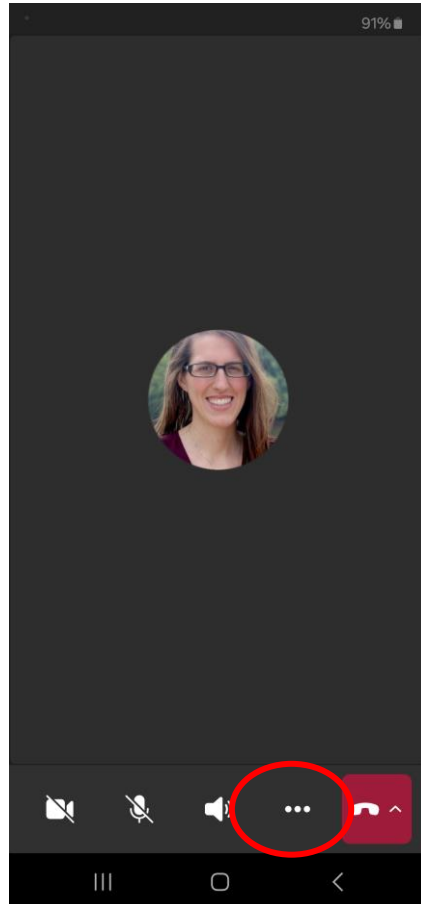


DELAWARE DEPARTMENT OF
NATURAL RESOURCES AND
ENVIRONMENTAL CONTROL

Live Captions on Computer



Live Captions on Mobile



Questions and Comments

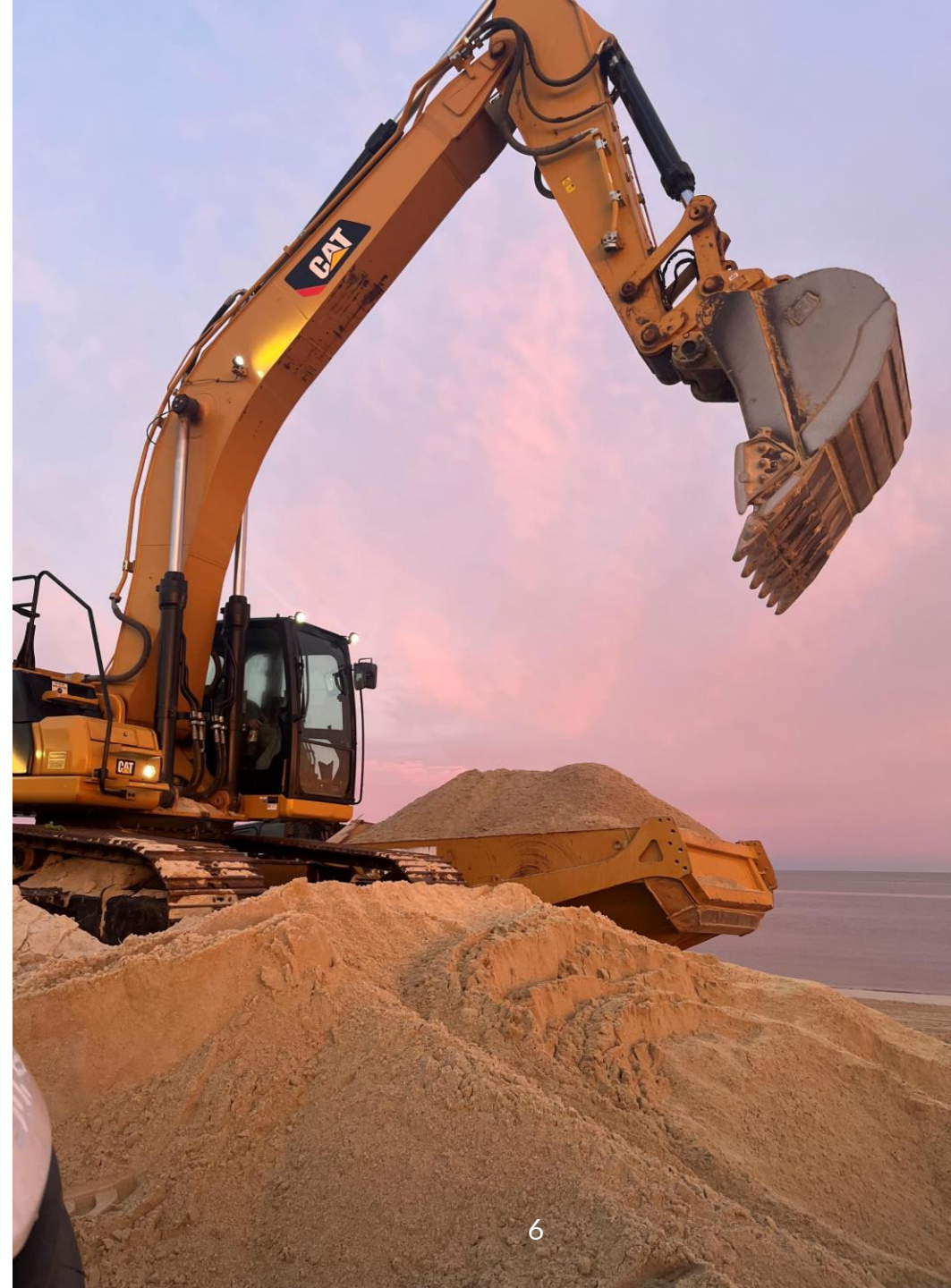
- If you have questions or comments, you can enter your questions into the chat
- Or, email your questions to Shoreline_Questions@delaware.gov
 - Questions will be moderated and answered, as time allows, at the end of the presentations



Present results of the economic analysis for shoreline management; address public questions

Purpose of the Meeting

- Briefly present background information and project methods and outputs
 - Previous slides still available (more background)
- Present results of the analysis
 - Will inform future decision making
- Discuss next steps
- Questions/Comments





October 1, 2024

Project Workgroup

- DNREC; Shoreline and Waterways, Coastal Programs
- IEc & Woods Hole Group (consultant)
- Bay Beach Association
- Association of Coastal Towns
- Sussex and Kent Counties
- University of Maryland Environmental Finance Center
- Delaware Sea Grant



DELAWARE DEPARTMENT OF
NATURAL RESOURCES AND
ENVIRONMENTAL CONTROL

Agenda

- Project/Meeting Introduction (15mins)
 - DNREC Shoreline and Waterways Program Administrator
- Presentation of Study Findings (40mins)
 - Ben Blachly, Maura Flight, IEC; Kirk Bosma, Woods Hole Group
- Next Steps (5mins)
- Question and Answer (~30mins)
- Adjourn

Economic Analysis for Shoreline Management

Public Meeting #2
September 26, 2024



DELAWARE DEPARTMENT OF
NATURAL RESOURCES AND
ENVIRONMENTAL CONTROL

Purpose and Benefits of Beach Nourishment

Storm Protection



Recreation and Tourism



Habitat



DELAWARE DEPARTMENT OF
NATURAL RESOURCES AND
ENVIRONMENTAL CONTROL

Setting the Stage: Over 50 years of Beach Nourishment in Delaware

- Since the 1950's, the State of Delaware has been placing sand on Delaware bay and ocean beaches in beach nourishment projects
- **Costs of nourishment projects are increasing to an unsustainable level.**



History Of Beach Nourishment In Delaware

- 71 nourishment projects on the Delaware Bay beaches
- 59 nourishment projects on the Atlantic Coast Beaches
- **Since the 1950's, ~25 million cubic yards of sand have been placed on Delaware's beaches.**



Rising Costs of Beach Nourishment in Delaware

- Total of \$68.1 million spent by state on nourishment projects statewide since 1950's
- Costs driven up significantly in 2000's due to state's cost-sharing obligation on large federal nourishment projects along the Atlantic Coast
 - Army Corp/Non-federal sponsor cost share ratio is variable and can change overtime-has recently changed
 - Nationally, non-federal cost share is often divided among the state and local entities

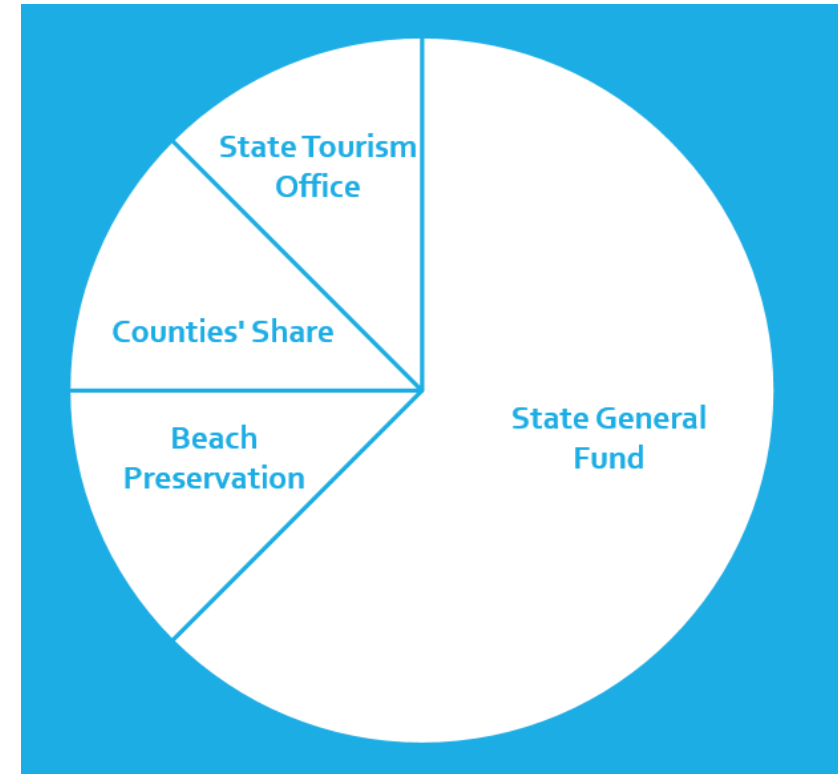
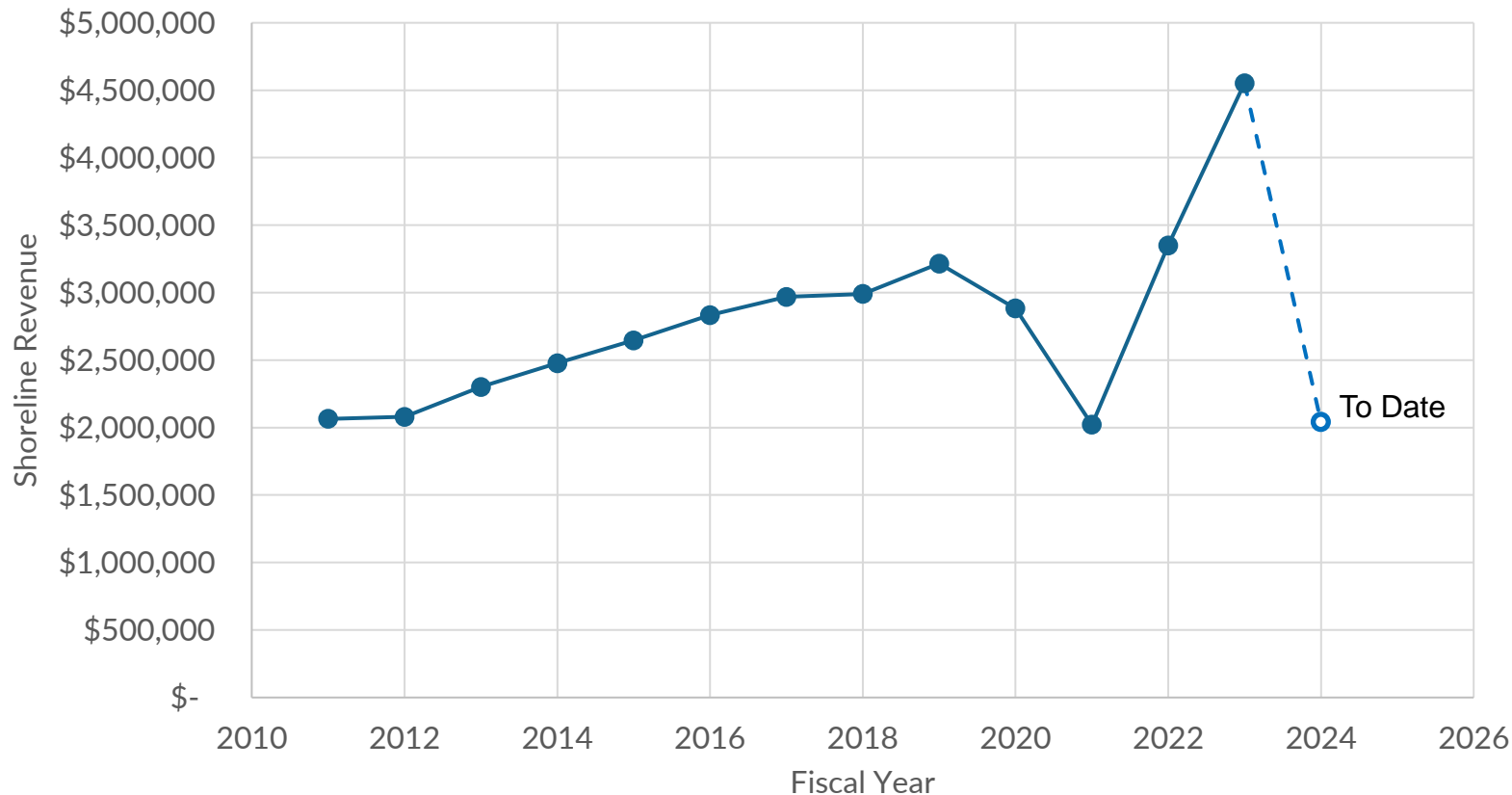


DNREC SWMS Budget Realities

FUNDING SOURCE 1 : State Lodging tax

- 8% tax of the rent of hotels, motels or tourist homes
- Soon, rental properties will also be included

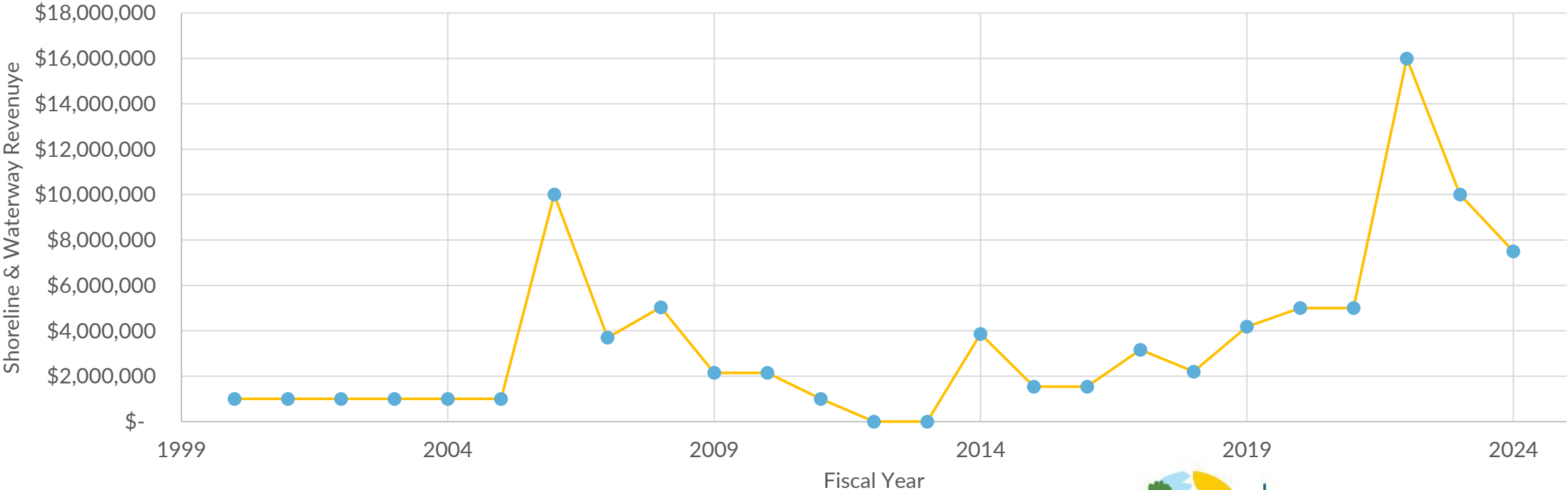
Accommodations Tax Revenue



FUNDING SOURCE 2: Bond Bill Appropriations

- Highly variable revenue stream
- Average for budget planning \$3.5million (below need)
- Level of funding not guaranteed

Shoreline & Waterway Management Bond Bill Appropriations





October 1, 2024

16



DELAWARE DEPARTMENT OF
NATURAL RESOURCES AND
ENVIRONMENTAL CONTROL

Timeline

- September-Community Meeting
- September- Review questions/comments
- Early October-Present draft report to workgroup
- October-Meet with workgroup to discuss
- Early November-Review questions/comments
- Late 2024- Final report publicly available
- Early 2025-Present and discuss results with DNREC leadership



Question and Answer

- If you have questions during the meeting, type in the chat or send to Shoreline_Questions@delaware.gov
 - If clarification is needed, we will ask/allow you to unmute to verbally clarify
- Media outlets, please go through usual DNREC Channels for comment





Take Aways

- Nourishment is getting more expensive, state funding can fluctuate
- Looking at benefits that are directly attributed to beach nourishment and recommending a local cost-share
- Doesn't affect current projects

Study is a first step, no immediate changes; Report will go to Department leadership



Thank you for your Participation

- Slide, Transcript, and other materials will be made available after the meeting (a week or so)
- If you have additional questions or feedback, please contact Sarah Bouboulis, sarah.bouboulis@delaware.gov

