

DELAWARE HAZARDOUS SUBSTANCE CLEANUP ACT EXPENDITURE PLAN AND ANNUAL REPORT

**DEPARTMENT OF NATURAL RESOURCES AND
ENVIRONMENTAL CONTROL
DIVISION OF WASTE AND HAZARDOUS SUBSTANCES
REMEDiation SECTION
FISCAL YEAR 2024**



**STATE OF DELAWARE
DEPARTMENT OF NATURAL RESOURCES
AND ENVIRONMENTAL CONTROL
89 KINGS HWY
DOVER, DE 19901
dnrec.delaware.gov**

EXECUTIVE SUMMARY

The Delaware Hazardous Substance Cleanup Act (HSCA) requires the Secretary of Department of Natural Resources and Environmental Control (DNREC) to prepare an annual budget for the proposed use of the HSCA fund. This report presents the DNREC HSCA expenditure plan for fiscal year 2024 (FY2024).

The main objective of HSCA is to enable DNREC to address sites that are not eligible for remediation under the federal superfund program (i.e., listed on the U.S. EPA National Priorities List or NPL). In addition, DNREC administers several programs under different administrative sections with HSCA funds. The HSCA fund generated \$16.09 million in revenue in FY2022 that will be utilized to remediate releases of hazardous substances, perform emergency responses throughout the state and address leaking aboveground and underground storage tanks.

In 2019, Senate Bill 113 was passed through the 150th General Assembly and went into effect on January 1, 2021. The bill placed a cap on the HSCA administration cost that the Division of Waste and Hazardous Substances can spend on a yearly basis. No more than 15% of the average monies deposited into the fund over the previous ten fiscal years may be used. In addition, the bill also extended the HSCA tax until 2029, when it is scheduled to expire.

DNREC has identified approximately 2,945 sites in Delaware as potential hazardous substance and petroleum release sites. Of those 2,945 sites, 884 are active in the investigation or remedial phase and 2,061 have been remediated or are in the long-term stewardship (LTS) program. Active sites funded partially or completely by HSCA include brownfields development, state lead HSCA, under ground storage tank (UST) and aboveground storage tank (AST) sites, NPL and non-NPL federal sites and heating fuel UST programs. Under the LTS program, continued monitoring activities at the sites, and the operation and maintenance of the remedial systems constructed at the sites are performed. The LTS phase of the cleanup may last thirty (30) years or more from the issuance of the DNREC certification of completion of remedy (COCR), depending on the remedy at the site.

Type	Active	COCR/ No Further Action (NFA)	Long-term Stewardship	Total
Brownfields Development Program Sites	122	57	166	345
State Lead Hazardous Substance Cleanup Act Sites	156	270	54	480
Voluntary Cleanup Program Sites	59	71	99	229
State Lead Former Tank Management Section Sites	25	189	N/A	214
Federal National Priorities List	9	7	8	24
Federal Sites Other (Department of Defense (DOD), Preliminary Assessment/ Site Inspection (PA/SI,) and Subtitle C)	20	0	0	20
Heating Fuel Underground Storage Tank Closure Assistance Program	122	1142	N/A	1264
Emergency Response Cleanups	0	369	N/A	369
Total	884	1734	327	2945

TABLE OF CONTENTS

1.0	INTRODUCTION	4
2.0	THE REMEDIATION SECTION (RS)	4
2.1	The Delaware Hazardous Substance Cleanup Act (HSCA)	4
2.2	The Delaware Regulations Governing Hazardous Substance Cleanup	5
2.3	Voluntary Cleanup	7
2.4	Brownfield Development Program	7
2.5	State Financed Storage Tank Cleanups	7
2.6	Ranking of Sites	8
2.7	Public Involvement	8
2.8	Organization of the Remediation Section	8
2.9	HSCA Liabilities Report	9
3.0	PROGRESS TOWARDS COMPLETING REMEDIES	10
3.1	FY2022 Sites Completed through Final Plan	10
3.2	FY2022 Site-Specific Status and Projections for FY2023	11
4.0	EMERGENCY RESPONSE AND STRATEGIC SERVICES (ERSS)	11
5.0	PROGRAM-RELATED GOALS AND OBJECTIVES FOR FY2023	12
6.0	EXPENDITURES AND FOUR-YEAR BUDGET PROJECTIONS	13
Attachments		
	- Attachment A: Organizational Charts	14
	- Attachment B: Site Report Tables by Phase/Status	15
	- Attachment C: Glossary of Terms and Abbreviations	72

1.0 INTRODUCTION

The Delaware Hazardous Substance Cleanup Act (HSCA) requires the Secretary of DNREC to prepare an annual budget for the proposed use of the HSCA fund in accordance with 7 Del. C. 91, §9104 (c) (2). The Delaware Hazardous Substance Cleanup Act program, also known as the HSCA program, is managed primarily by DNREC's Division of Waste and Hazardous Substances Remediation Section. Other programs that receive HSCA funding are managed under the Emergency Response and Strategic Services Section.

The following report, prepared for the Governor and the Delaware General Assembly, represents the DNREC HSCA expenditure plan for fiscal year 2024 (FY2024). The goal in developing and updating this expenditure plan is to provide accountability for expenditures by DNREC to the legislature, other interested parties and agencies and the general public. The expenditure plan is intended to provide a complete and accurate description of DNREC plans for investigating and remediating hazardous substance and petroleum release sites in Delaware. The definition of a hazardous substance in Delaware includes any substance in the HSCA screening level table, which is updated semi-annually; hazardous waste; and petroleum, including crude oil or any fraction thereof. However, any release of hazardous substances from a storage tank is regulated by 7 Del. C. 74, or 7 Del. C. 74A.

Spending needs for the upcoming year cannot always be anticipated in the HSCA expenditure plan, regardless of the planning effort. The reasons for unexpected expenditures include waste spills caused by floods and other acts of nature, abandonment of waste in place and other costly actions associated with bankrupt corporations and the contamination of public drinking water supply wells resulting from groundwater contaminant plumes of hazardous substances. These contaminants can seep into the groundwater years after the waste was disposed of in landfills and seepage basins or at industrial/commercial sites or leaked from aboveground or underground storage tanks. DNREC is accountable in several ways for these unexpected expenditures. Pursuant to HSCA, 7 Del. C. 91, § 9113 (e), DNREC is required to seek approval for such activities from the Speaker of the House and President Pro Tempore of the Senate for any expenditures from the HSCA fund that were not budgeted in the annual expenditure plan. The plan identifies hazardous substance release sites targeted for cleanup under state lead cleanup fund, enforcement, brownfields development, leaking underground storage tank, aboveground storage tank and voluntary cleanup programs for five years (FY2022-FY2026).

DNREC is reporting, through this expenditure plan, the site work and activities conducted during FY2022. In addition, the Secretary of DNREC is certifying that all expenditures have been made in accordance with the expenditure plan and as approved, to carry out the purposes of 7 Del. C. 91.

Effective July 1, 2019, the Division of Waste and Hazardous Substances went through a reorganization. Since this realignment went into effect, the division has already seen positive feedback from both its internal and external customers. For instance, the division is now performing outreach with a unified approach, providing the public with one organizational structure to address remedial concerns.

2.0 THE REMEDIATION SECTION (RS)

2.1 The Delaware Hazardous Substance Cleanup Act (HSCA)

HSCA (7 Del. C. 91) was passed by the Delaware General Assembly in July of 1990. Amendments have been added over the years to support the addition of the voluntary cleanup and brown-fields development programs. The HSCA statute gives DNREC the ability to ensure cleanup of facilities with a release or imminent threat of a release of hazardous substances. The main objective of HSCA is to enable DNREC to address those sites not remediated under the federal superfund program. The DNREC Remediation Section and Emergency Response and Strategic Service Section have identified approximately 2,945 sites in Delaware, as potential hazardous substance release sites. There are 884 active sites, 1,734 that have received certification of completion of remedy or no further action determination, and 327 sites are in long-term stewardship phase

In 2019, Senate Bill 113 was passed by the 150th General Assembly and went into effect on January 1, 2021. This bill placed a cap on the HSCA administration costs the division can spend on a yearly basis. No more than 15% of the average monies deposited into the fund over the previous ten (10) fiscal years may be used. In addition, the bill extended the HSCA tax until 2029, when it is scheduled to expire.

House Bill 451 was passed on June 30, 2018, and went into effect on January 1, 2019. This Act caps the HSCA tax rate at 1.675% and allows the lowest rate to drop to .675%. The intent of the statutorily mandated formula was to ensure the receipt of \$15M each year for the HSCA Fund.

The state program requires potentially responsible parties to pay for the costs associated with investigating and cleaning up a site. If a potentially responsible party (PRP) cannot be identified, or is unable to pay for the cleanup, monies from the HSCA fund are used to perform the cleanup of the site.

2.2 The Delaware Regulations Governing Hazardous Substance Cleanup

HSCA requires the Secretary of DNREC to promulgate regulations in order to establish procedures governing site cleanups. The Delaware Regulations Governing Hazardous Substance Cleanup were promulgated initially by DNREC on January 12, 1993, and then amended most recently in 2019 as the programs developed. These regulations describe the entire cleanup process, from the identification of a site to its final cleanup and provide the definition and criteria for brownfield sites. In FY2019, the updated regulations went into effect.

Any facility with a release or imminent threat of release may go through one or more of the following steps:

- o **Facility Identification:** Facilities are identified through a variety of mechanisms, such as referrals from prospective purchasers, property owners and developers interested in the brownfield's development or voluntary cleanup programs; complaints from the public; and environmental assessment reports such as Initial Investigation, Preliminary Assessment, Phase I, etc. from DNREC, other state agencies or other parties.
- o **Scoping Meetings:** If a brownfield developer wants to address a site through the brownfield's development program or a potentially responsible party wants to address the site through the VCP, then a scoping meeting is held. Participants at these meetings will share existing information regarding site conditions and reach agreements concerning the schedule and content of future work that will be required at the site. In addition, the potential funding assistance programs are explained to the meeting participants. For other sites, generally an internal meeting occurs to determine if further investigation in the form of a facility evaluation (FE) or equivalent is needed to confirm the potential release of hazardous substances.
- o **Facility Evaluation:** DNREC, or a qualified environmental consultant, may conduct a facility evaluation to confirm the release, or imminent threat of release of hazardous substances at a facility, and develop information to evaluate the threat to public health, welfare, or the environment. If a release is confirmed through the FE or other investigative reports, such as Phase II Environmental Site Assessments or a Site Inspection, then the next step is to notify the potentially responsible parties.
- o **Identification and Notification of Potentially Responsible Parties (PRPs):** DNREC will initiate actions to identify and notify the PRPs associated with a facility where a release or imminent threat of release of hazardous substances has been confirmed.
- o **Negotiations with Potentially Responsible Parties:** Where a valid PRP exists, DNREC will first seek complete cleanup by the PRP to preserve HSCA resources. DNREC may require the PRPs to perform response actions by issuing a letter inviting negotiations towards preparation of a settlement agreement. If the PRPs and DNREC fail to reach a settlement agreement within 90 days, the Secretary of DNREC may issue an administrative order, or may initiate cleanup using the HSCA fund

and pursue recovery of costs from the responsible parties. DNREC may at any time carry out a response action at a facility if the PRPs have not carried out the response action in a timely manner, or if PRPs cannot be identified.

- o **Remedial Investigation:** A remedial investigation is conducted at a facility to delineate the extent of contamination and clearly describe the existing or potential risks to public health, welfare, or the environment and to identify the specific problems requiring remediation. This is usually the first phase of a response action at a facility pursuant to a settlement agreement or another agreement to conduct the work. This step involves field sampling of the different environmental media and laboratory analysis of the samples.
- o **Feasibility Study:** A feasibility study follows a remedial investigation at a facility and identifies the remedial alternatives appropriate to the site.
- o **Plan of Remedial Action:** DNREC advertises a proposed plan of remedial action outlining the remedial action alternative chosen by DNREC and provides a public notice to allow the public to comment. After review and consideration of the comments received, DNREC issues a final plan of remedial action.
- o **Remediation:** Based on the final plan of remedial action, the selected remedy is implemented at a facility. This process consists of the following distinct phases.
- o **Remedial Design:** This phase consists of the preparation of engineering design reports and construction plans and specifications.
- o **Remedial Action:** This refers to the actual implementation of the remedy in accordance with the construction plans and specifications.
- o **Long-term Stewardship:** LTS refers to actions taken to maintain the effectiveness of the remedial action and ensure the site is protective to public health and the environment.
- o **Interim Response Activity:** DNREC may require or conduct an interim action at any time before the selection of a remedy to prevent, minimize or mitigate harm to public health, welfare, or the environment.
- o **Certification of Completion of Remedy (COCR):** DNREC issues a COCR after the remedial action is implemented. A COCR may require LTS.
- o **Site Closeout:** DNREC administratively closes a site when the remedy is completed and no further action is needed at the site.

The HSCA fund is used to identify a facility through initial investigation and facility evaluation to confirm a release of hazardous substances. This information is then used to identify potential responsible parties and require them to address further investigation and cleanup. However, if a viable responsible party cannot be found then the HSCA fund is used to investigate and clean up these sites. There are 156 active sites being addressed currently, 270 sites have been administratively closed, while 54 sites are in LTS.

2.3 Voluntary Cleanup Program

Voluntary Cleanup Program (VCP) began in August of 1993. The VCP was developed to allow parties that may be liable for the contamination of a property but wish to settle their liabilities with DNREC under HSCA. This program allows responsible parties to volunteer to clean up their properties before DNREC enforces a cleanup under HSCA. There are 59 active VCP sites being addressed currently, 71 sites have been administratively closed, and 99 sites are in LTS. This program is fully funded utilizing non-appropriated special funds (NSF) deposited by the potentially responsible parties. This NSF account funds

staff oversight of VCP facilities ensuring that they are remediated according to HSCA.

2.4 Brownfield Development Program

Under this program, the state provides incentives to the business community in the form of financial assistance, through grants and loans. Brownfield legislation was passed in 2002. The brownfields development program provides liability protections from a hazardous substance release when a developer can demonstrate they did not cause or contribute to the release. The grant funds are used for the environmental investigation and remediation activities. With the passage of House Bill 451 in 2018, one third of all funds collected under HSCA is placed in a separate holding account. This account is utilized to implement the program.

During FY2022, DNREC offered brownfield grants to numerous businesses interested in redeveloping property suspected to be environmentally contaminated. The grant funds have assisted in moving many brownfield projects toward redevelopment throughout the state. Some of the projects include the Rodney Dorns site in Newark and the Deerfield Farms site in Dover. There are 122 active sites being addressed currently, 57 sites have been administratively closed, and 166 sites are in LTS.

2.5 State Financed Storage Tank Cleanups

The corrective action group within the Remediation Section administers the Delaware underground and aboveground storage tank (UST and AST) corrective action programs. 7 Del. Laws, c. 74 and 74A authorize DNREC to promulgate regulations to ensure that underground and aboveground storage tanks are installed and operated in a manner that will prevent releases and, where releases occur, to detect them as soon as possible and require responsible parties to perform the necessary cleanup. These sites become state-lead when the determination is made that state intervention is necessary to move the sites towards closure to protect public health, welfare, and the environment. Eligible state-lead petroleum sites have received \$13,586,829.60 in HSCA funding since FY2001, which included a total of \$333,680.56 of HSCA funding that was spent during FY2022 on the state-lead UST/AST cleanup sites.

The Delaware underground and aboveground storage tank laws authorizes the use of HSCA funds to provide financial assistance to remove regulated storage tanks, investigate the nature and extent of a release and perform necessary corrective actions. Should a responsible party be found, the costs expended from the HSCA fund may be recovered from the responsible party. In the event of a recalcitrant responsible party, DNREC may assume control of a release to protect human health, welfare, and the environment, and then cost recover against the responsible party for the work performed. Changes to the UST cleanup liability went into effect in January 2016, making the current owner of the UST facility joint and severally liable for any contamination that can be attributed to the facility. As part of implementing these changes, DNREC is committed to continuing to fund cleanups that had previously been designated as state-lead to ensure that corrective actions are conducted to clean up the site to health-based standards and minimize degradation of the environment.

HSCA funds are used to fund state-lead cleanup efforts at several UST, AST, and petroleum release sites where the owner of the tank system is recalcitrant in complying with cleanup requirements, does not exist, or does not have the financial means. Since March 2000, the corrective action group has identified 214 state-lead USTs/ASTs and heating fuel sites that receive HSCA funding. Remediation work has been completed and “no further action” determinations have been issued for 189 of the sites funded by HSCA. In 2015, the HSCA fund was used to create the heating fuel underground storage tank closure assistance program (HFAP). Since the inception of the HFAP, 1264 heating fuel USTs have qualified.

2.6 Ranking of Sites

HSCA requires DNREC to establish a priority list of facilities from the inventory of hazardous substance release sites using the Delaware Hazard Ranking Model. All sites in the inventory are ranked into three (3) major categories of high, intermediate, and low hazard. The model consists of a

set of questions that are grouped into these three ranks. The sites are ranked based on the answer to the questions. For example, a site is ranked high if it poses an imminent threat to public health, welfare, or the environment such as when a public drinking water supply well is impacted by contamination at the site. The ranking is done electronically for each site and is part of the Remediation Section's Site Status Database (SSD). As new information becomes available or the sites go through a critical remediation phase, the sites are reranked. The ranking is used as the primary criteria for the prioritization of the use of HSCA funding, with the high-ranking sites getting the highest priorities. Sites being addressed under the brownfield's development or voluntary cleanup programs, where the private parties volunteer to investigate and cleanup a site and are willing to expend monies up front for the projects, are given priority ranking.

2.7 Public Involvement

Another critical part of the HSCA program is the public involvement process. HSCA mandates public notice at several times during the site investigation and cleanup process. DNREC maintains an active community relations program for all sites under its jurisdiction. In addition, to the provisions for public input in both the HSCA statute and the Delaware Regulations Governing Hazardous Substance Cleanup, in person and virtual meetings, fact sheets, and newsletters are some of the methods used by the Remediation Section to keep the public informed of site activities. The Remediation Section strongly believes in maintaining close ties with all stakeholders in the cleanup process.

The HSCA Advisory Committee (HAC) is a group of stakeholders that assists by providing input to the division to achieve its objective of promoting the cleanup and development of hazardous substance release sites in the state by ensuring timely and effective cleanups with protective, equitable and sustainable remedies. In addition, the HAC helps to address long-term stewardship for properties that have a remedy in place, as well as other HSCA issues. The HAC also helps to integrate DNREC objectives with other state and local goals for conservation and economic development. The Division relies on the HAC to represent broad public interest and community perspectives for Delaware's hazardous substance release sites.

2.8 Organization of the Remediation Section

Primary day-to-day management responsibility for implementation of HSCA is performed by DNREC Division of Waste and Hazardous Substances Remediation Section. In addition, significant involvement with other divisions, sections, U.S. EPA, as well as other state agencies, such as Delaware Division of Small Business, Delaware Division of Public Health, and the Department of Agriculture, is essential for effective implementation.

There are currently 33 staff positions in the Remediation Section. Of these, two are vacant, 1.7 are currently being funded by general funds, 14.4 are funded by U.S. EPA grants, and 18.9 are funded through the HSCA fund and from reimbursements by private parties for oversight of cleanup of their sites. Attachment A depicts the overall organization of DNREC, the division and applicable sections, as well as relationships to other programs and divisions. Additionally, the HSCA fund is used to fund the services of one Deputy Attorney General position in the Delaware Department of Justice, and seven positions in the Emergency Prevention and Strategic Services Section.

2.9 Hazardous Substance Cleanup Act Liabilities Report

DNREC provides the Division of Accounting with an annual report on outstanding financial liability on HSCA sites. The report is broken down into four sections: state owned sites, legal agreements, cost share with U.S. EPA, and state lead sites. The table summarizes the outstanding liabilities under HSCA. There are three projections that are made: requested funds for the budget, worse case and best-case scenarios. Those estimates are provided by the project officers and are based on their knowledge of known or perceived contamination at the sites. For 2023, the outstanding liability is \$21,616,500.00 which is the total for the worst-case scenario. This outstanding liability does not include facilities that have yet to be identified.

HSCA Liabilities					
	2019	2020	2021	2022	2023
Time Period	2019-2023	2020-2024	2021-2025	2022-2026	2023-2027
State Owned	5	5	5	5	5
Requested	\$2,159,500.00	\$2,416,647.29	\$704,000.00	\$674,700.00	\$688,700.00
Worst Case	\$2,510,000.00	\$2,060,600.00	\$2,130,000.00	\$1,645,000.00	\$1,325,000.00
Best Case	\$2,490,100.00	\$1,110,100.00	\$1,010,000.00	\$750,000.00	\$438,000.00
Legal Agreements	4	3	2	2	2
Requested	\$57,000.00	\$277,267.18	\$95,000.00	\$170,500.00	\$176,500.00
Worst Case	\$157,000.00	\$70,000.00	\$50,000.00	\$50,000.00	\$183,000.00
Best Case	\$87,000.00	\$20,000.00	\$143,780.00	\$173,000.00	\$17,500.00
Cost Share Agreements	3	3	3	3	3
Requested	\$2,582,000.00	\$2,208,082.25	\$2,197,000.00	\$2,634,180.00	\$9,125,000.00
Worst Case	\$ -	\$ -	\$ -	\$9,000,000.00	\$ -
Best Case	\$ -	\$ -	\$ -	\$2,500,000.00	\$2,500,000.00
State Lead	62	63	63	68	63
Requested	\$9,955,300.00	\$14,906,455.66	\$12,714,180.00	\$13,874,958.00	\$12,673,106.00
Worst Case	\$25,590,800.00	\$18,882,800.00	\$23,043,000.00	\$23,091,000.00	\$20,108,500.00
Best Case	\$5,723,000.00	\$5,224,002.00	\$7,912,000.00	\$7,013,000.00	\$7,163,000.00
Total Requested	\$14,753,800.00	\$19,808,452.38	\$15,710,736.00	\$17,354,338.00	\$22,663,306.00
Total Worse Case	\$27,457,800.00	\$21,013,400.00	\$25,223,000.00	\$33,786,000.00	\$21,616,500.00
Total Best Case	\$8,300,100.00	\$6,354,102.00	\$9,065,780.00	\$10,436,000.00	\$10,118,500.00

3.0 Progress Towards Completing Remedies

Appendix B Table	Title/Category
1	Final Plans Issued
2	HSCA Program Active Sites
3	Brownfields Development Program Active Sites
4	Voluntary Cleanup Program Active Sites
5	Remediation Section Federally Participating Active Sites
5	NPL Sites
6	Former Tank State Lead Sites Granted No Further Action
6	Active Former Tank State Lead Sites
7	Completed Brownfields Development Program Sites
7	Completed VCP
8	Closed HSCA Sites
9	Long-term Stewardship Sites

3.1 FY2022 Sites Completed through Final Plan

During FY2022, DNREC completed investigations and issued 28 final plans of remedial actions. Cumulatively from FY1994 to FY2022, DNREC completed investigations and issued final plans of remedial actions at a total of 495 sites.

Once a final plan is issued, construction and active remedial actions may commence. Sites with residual contamination that are left under a containment system (i.e., cap) are moved into the long-term stewardship program for continued monitoring to ensure the site remains protective of human health and the environment. The LTS phase of the cleanup starts from the issuance of the DNREC certification of completion of remedy (COCR).

3.2 Site-Specific Status

Type	Active	COCR/ No Further Action (NFA)	Long-term Stewardship	Total
Brownfields Development Program Sites	122	57	166	345
State Lead Hazardous Substance Cleanup Act Sites	156	270	54	480
Voluntary Cleanup Program Sites	59	71	99	229
State Lead Former Tank Management Section Sites	25	189	N/A	214
Federal National Priorities List	9	7	8	24
Federal Sites Other (Department of Defense (DOD), Preliminary Assessment/ Site Inspection (PA/Sl,) and Subtitle C)	20	0	0	20
Heating Fuel Underground Storage Tank Closure Assistance Program	122	1142	N/A	1264
Emergency Response Cleanups	0	369	N/A	369
Total	884	1734	327	2945

4.0 EMERGENCY RESPONSE AND STRATEGIC SERVICES (ERSS)

The Emergency Response and Strategic Services Section is responsible for all support activities related to hazardous materials releases and/or environmental emergencies, as well as operational support services for the division. The section includes the accidental release prevention program, the emergency planning and community right-to-know program, the boiler safety program, emergency response team and the strategic services branch.

Statistics for FY2022 show the DNREC emergency response team (ERT) responded to 369 incidents. This is compared to 416 responses in FY2021. As with previous years, the highest percentage of responses continue to be transportation-related spills and releases primarily from motor vehicle accidents. The second highest percentage of responses in FY2022 were residential heating fuel spills. These two types of responses made up 66% of the DNREC total responses in FY2022. DNREC has also experienced a long-standing “60% Rule” with regards to petroleum incidents: 66% of the incidents were petroleum-related releases in the state. Percentage of incidents per county are as follows: 53% in New Castle County, 21% in Kent County, and 26% in Sussex. In the past year, DNREC also responded to one out-of-state incident at the request of the local law enforcement agency or fire department. The DNREC ERT provides the hazardous materials support function as part of a joint hazard assessment team with other emergency response partners, such as law enforcement agencies when needed.

5.0 PROGRAM-RELATED GOALS AND OBJECTIVES FOR FY2023

The following represents the program-related goals and objectives for FY2023:

Remediation Section

- o Continue to work on the pre-remedial and NPL sites with the federal government and toward a record of decision.
- o Continue improvements in the brownfield's development and VCP programs
- o Continue to address Emergent Contaminants of Concern including PFAS
- o Provide technical assistance and coordination to address contamination issues associated with other programs.
- o Promote innovative technologies in site investigation and remediation.
- o Conduct baseline assessments and other activities to support a natural resource damage assessment program.
- o Implement groundwater natural resource damages assessment (NRDA).
- o Conduct assessments and other activities to support the watershed assessment program.
- o Initiate basin-wide implementation of sediment remedies through watershed approach to toxics assessment and restoration (WATAR).
- o Work with public and private partners to fully utilize the brownfields development program in promoting the reuse of properties throughout the state.
- o Finalize HSCA guidance documents and various policies.
- o Continue to address the backlogged HSCA sites to determine what further actions are necessary and perform facility evaluations.
- o Utilize EQulS for storing all environmental data within the division.
- o Implement findings of the drycleaner initiative.
- o Continue to implement the UST heating fuel tank closure assistance program.
- o Investigate and cleanup releases from USTs and ASTs at sites where the responsible parties are recalcitrant or do not have the ability to pay.
- o Update the Delaware risk-based corrective action program document relating to the cleanup of underground storage tank sites.

Emergency Response and Strategic Services Section

- o Continue to have the same high level of response preparedness and continue to improve on-scene response objectives/mitigation.
- o Focused training to ensure all responders meet OSHA/NFPA HazMat technician standards.
- o Replace field monitoring equipment that is over 10 years old with newer instruments.
- o Increase the timeliness and amount of costs recovered from responsible parties.
- o Improve outreach to communicate effectively with the regulated community and the general public.
- o Standardize processes across sections for operational support activities.
- o Implement continuous improvement.
- o Publish the HSCA expenditure plan for FY2024.

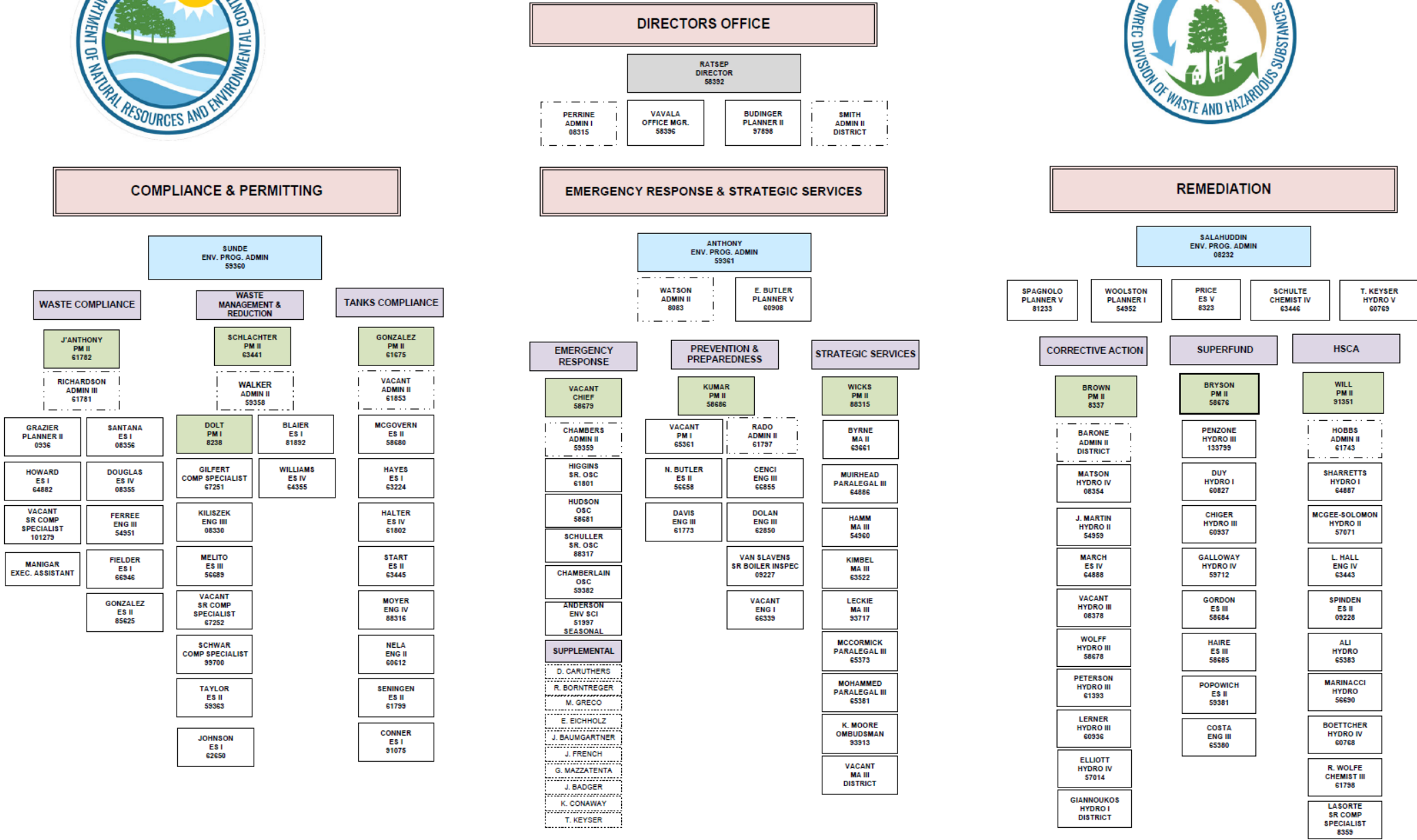
6.0 EXPENDITURES AND FOUR-YEAR BUDGET PROJECTIONS

The HSCA fund expended \$12.4 million and received \$16.0 million in revenue in FY2022. The projections are based on known, anticipated and projected costs for sites currently identified by DNREC and a contingency line item for sites yet to be identified.

ATTACHMENT A: ORGANIZATIONAL CHART



DIVISION OF WASTE AND HAZARDOUS SUBSTANCES



**ATTACHMENT B (CONTINUED):
SITE REPORTING TABLES BY PHASE/STATUS**

**Table 1
Final Plans Issued
As of Fiscal Year, Ending 2022**

SITE NAME	TOWN	COUNTY	DE SITE ID #	DATE FINAL PLAN ISSUED	TYPE OF SITE
0 MILLER ROAD	WILMINGTON	NEW CASTLE	1394	Sep-07	BROWN- FIELD DEVELOP- MENT PRO- GRAM (BF)
0 RED LION ROAD	BEAR	NEW CASTLE	1628	Dec-16	BF
0 SOUTH CHAPEL STREET	NEWARK	NEW CASTLE	1614	Apr-16	BF
00 MT. VERNON STREET	SMYRNA	KENT	1424	Oct-08	BF
1 FORGE DRIVE	NEWARK	NEW CASTLE	1730	Apr-21	BF
2-4 EAST 7TH STREET	WILMINGTON	NEW CASTLE	1636	Jun-18	BF
5 TH & DUPONT STREETS	WILMINGTON	NEW CASTLE	1236	Jan-09	VOLUNTARY CLEANUP PROGRAM (VCP)
12 & 14 GORDON STREET	WILMINGTON	NEW CASTLE	1697	Jan-22	BF*
22 A EAST 23RD STREET	WILMINGTON	NEW CASTLE	1538	Oct-13	BF
35 COMMERCE STREET	WILMINGTON	NEW CASTLE	1734	Jul-21	BF
38 VANDEVER AVE	WILMINGTON	NEW CASTLE	1382	Apr-08	BF
97 VANDEVER AVE	WILMINGTON	NEW CASTLE	1429	Jan-11	BF
100 WALNUT STREET	WILMINGTON	NEW CASTLE	1114	Aug-18	VCP
101 BEECH STREET	WILMINGTON	NEW CASTLE	1364	May-06	HSCA (HAZARDOU S SUB- STANCE CLEANUP ACT)
101 SOUTH DUPONT HIGHWAY	NEW CASTLE	NEW CASTLE	1581	Dec-18 Jan-21	VCP
110 WATER STREET	NEWARK	NEW CASTLE	1582	Jul-15	BF
119 NORTH DUPONT HIGHWAY	DOVER	KENT	1677	Oct-18	BF
121 NORTH POPLAR STREET	WILMINGTON	NEW CASTLE	1066	Jan-97	VCP
200 & 206 MARYLAND AVE	WILMINGTON	NEW CASTLE	1217	Mar-01	VCP
200 S MARKET STREET	WILMINGTON	NEW CASTLE	1217	Sep-04	BF
200 WEST 9TH STREET	WILMINGTON	NEW CASTLE	1637	Jan-18	BF
201 AND 205 A STREET	WILMINGTON	NEW CASTLE	1247	Sep-04	BF
201-213 N TATNALL STREET	WILMINGTON	NEW CASTLE	1645	Aug-17	VCP

* Bolded items are new for 2022

**ATTACHMENT B (CONTINUED):
SITE REPORTING TABLES BY PHASE/STATUS**

**Table 1
Final Plans Issued
As of Fiscal Year, Ending 2022**

SITE NAME	TOWN	COUNTY	DE SITE ID #	DATE FINAL PLAN ISSUED	TYPE OF SITE
207 A STREET	WILMINGTON	NEW CASTLE	1247	Sep-04	BF
210 GREENHILL AVE	WILMINGTON	NEW CASTLE	1080	Jul-03	VCP
217 NEW ROAD	WILMINGTON	NEW CASTLE	1535	Apr-13	BF
250 SOUTH MADISON	WILMINGTON	NEW CASTLE	1055	Jan-97	VCP
300 GREENHILL AVE	WILMINGTON	NEW CASTLE	1433	Feb-09	BF
307 RIDGE ROAD	CLAYMONT	NEW CASTLE	1580	Feb-19	BF
320 A STREET	WILMINGTON	NEW CASTLE	1291	Apr-04	BF
333 S GOVERNORS AVE	DOVER	KENT	0359	Apr-14	BF
400 S MADISON STREET	WILMINGTON	NEW CASTLE	1040	Nov-95	VCP
401 BELLEVUE ROAD	NEWARK	NEW CASTLE	1711	Oct-20	BF
401-425 NEW LONDON	NEWARK	NEW CASTLE	1680	Oct-18	VCP
427 NORTH TATNAL	WILMINGTON	NEW CASTLE	1248	Apr-16	BF
427 WEST 7TH STREET	NEW CASTLE	NEW CASTLE	1574	Oct-14	BF
501 A STREET	WILMINGTON	NEW CASTLE	1530	Apr-13	BF
501 S MARKET STREET	WILMINGTON	NEW CASTLE	1463	Oct-10	VCP
503 S. MARKET STREET	WILMINGTON	NEW CASTLE	1068	Oct-05	BF
504 KIRKWOOD	ELSMERE	NEW CASTLE	1661	Oct-18	BF
510 A STREET	WILMINGTON	NEW CASTLE	1626	Oct-16	BF
511 CONCORD AVE	WILMINGTON	WILMINGTON	1544	Dec-14	BF
512 S CLAYMONT	WILMINGTON	NEW CASTLE	0326	Oct-10	BF
513 LEXINGTON AVE	SMYRNA	KENT	1357	May-07	BF
517 SHIPLEY STREET	WILMINGTON	NEW CASTLE	105	Jun-21	VCP
518 S HEALD STREET	WILMINGTON	NEW CASTLE	1688	Nov-20	BF
524 A & B SOUTH	WILMINGTON	NEW CASTLE	1235	Aug-02	VCP
560 TERMINAL AVE	NEW CASTLE	NEW CASTLE	1123	Jan-03	VCP
600 A STREET	WILMINGTON	NEW CASTLE	1383	Oct-18	BF
600 N DUPONT HIGHWAY	NEW CASTLE	NEW CASTLE	1539	Dec-14	BF
601 JUSTISON STREET	WILMINGTON	NEW CASTLE	1729	May-21	BF
605 SOUTH BAY ROAD	DOVER	KENT	1564	Aug-14	VCP
605 VANDEVER AVE	WILMINGTON	NEW CASTLE	1444	Aug-09	BF
680 FOREST STREET	DOVER	KENT	1451	Mar-11	BF
700 A STREET	WILMINGTON	NEW CASTLE	1340	Apr-18	BF
701 A STREET	WILMINGTON	NEW CASTLE	1376	Nov-11	BF
707 S UNION STREET	WILMINGTON	NEW CASTLE	1740	Sep-21	BF
721 TERMINAL AVE	WILMINGTON	NEW CASTLE	1558	Feb-14	BF
726 A STREET	WILMINGTON	NEW CASTLE	1606	May-18	BF
733 S MARKET STREET	WILMINGTON	NEW CASTLE	1502	Jun-11	BF
735B SOUTH MARKET	WILMINGTON	NEW CASTLE	1632	Jun-17	BF
829 N CHURCH STREET	WILMINGTON	NEW CASTLE	1446	Mar-10	BF
837 N DUPONT HIGHWAY	DOVER	KENT	1700	Jan-21	BF

**ATTACHMENT B (CONTINUED):
SITE REPORTING TABLES BY PHASE/STATUS**

**Table 1
Final Plans Issued
As of Fiscal Year, Ending 2022**

SITE NAME	TOWN	COUNTY	DE SITE ID #	DATE FINAL PLAN ISSUED	TYPE OF SITE
SITE NAME	TOWN	COUNTY	DE SITE ID #	DATE FINAL PLAN ISSUED	TYPE OF SITE
900 & 920 FRENCH	WILMINGTON	NEW CASTLE	1206	Dec-01	BF
900 S HEALD STREET	WILMINGTON	NEW CASTLE	1760	May-22	BF
925 N CHURCH STREET	WILMINGTON	NEW CASTLE	1465	Sep-10	BF
1000 EAST 12th STREET	WILMINGTON	NEW CASTLE	1404	Jan-12	BF
1000 FRENCH STREET	WILMINGTON	NEW CASTLE	1115	Jun-99	VCP
1001 N SPRUCE STREET	WILMINGTON	NEW CASTLE	1642	Jan-18	BF
1001 GARASCHES LANE	WILMINGTON	NEW CASTLE	1556	Oct-16	BF
1020 CHRISTIANA AVE	WILMINGTON	NEW CASTLE	1431	Mar-09	BF
1039-1043 CLIFFORD BROWN WALK	WILMINGTON	NEW CASTLE	1690	May-21	BF
1101 EAST 8TH STREET	WILMINGTON	NEW CASTLE	1397	Jun-12	BF
1121 THATCHER STREET	WILMINGTON	NEW CASTLE	1097	Nov-00	VCP
1190 EAST 7TH STREET	WILMINGTON	NEW CASTLE	1410	Jul-21	BF
1215 PHILADELPHIA PIKE	WILMINGTON	NEW CASTLE	1621	Oct-16	BF
1320 CLIFFORD BROWN	WILMINGTON	NEW CASTLE	1540	Oct-14	BF
1330 THATCHER STREET	WILMINGTON	NEW CASTLE	1409	Jul-07	BF
14028 SUSSEX HIGHWAY	GREENWOOD	SUSSEX	1651	Jun-18	BF
16519 S DUPONT HWY	HARRINGTON	KENT	1768	Jun-22	BF
18904— 18920 COASTAL	REHOBOTH	NEW CASTLE	1587	Jun-16	BF
2002-2012 WEST	WILMINGTON	NEW CASTLE	1665	Mar-19	VCP
2004 & 2008 SHIPLEY	WILMINGTON	NEW CASTLE	1603	May-16	BF
20618 N DUPONT	GEORGETOWN	SUSSEX	1601	Sep-16	BF
2207 MITCH ROAD	WILMINGTON	NEW CASTLE	1543	Jan-15	BF
2301 N MARKET STREET	WILMINGTON	NEW CASTLE	1721	Jan-22	BF
2440 RED LION ROAD	BEAR	NEW CASTLE	1449	Oct-12	BF
2603 KIRKWOOD HIGHWAY	NEWARK	NEW CASTLE	1727	Aug-21	BF
2621 PHILADELPHIA PIKE	CLAYMONT	NEW CASTLE	1296	Jun-04	VCP
2712-2714 KIRKWOOD	WILMINGTON	NEW CASTLE	1584	Aug-15	BF
2925 NORTHEAST BLVD	WILMINGTON	NEW CASTLE	1413	Oct-21 Sep-11	VCP
24930 JOHN J. WILLIAMS	MILLSBORO	SUSSEX	1566	Nov-14	VCP
29984 PINNACLE WAY	DAGSBORO	SUSSEX	1555	Dec-13	BF
3006 LANCASTER AVE	WILMINGTON	NEW CASTLE	1568	Oct-16	BF
3022-3028 NEW CASTLE	NEW CASTLE	NEW CASTLE	1577	Mar-15	BF
3604 DOWNING DRIVE	WILMINGTON	NEW CASTLE	1670	Oct-18	BF
3700 N MARKET STREET	WILMINGTON	NEW CASTLE	1726	May-22	BF
4001 NEW CASTLE AVE	WILMINGTON	NEW CASTLE	1455	Sep-15	BF
4601 NORTH MARKET	WILMINGTON	NEW CASTLE	1684	Jun-19	BF
4928 & 4929 N DUPONT	DOVER	KENT	1627	Mar-17	BF

**ATTACHMENT B (CONTINUED):
SITE REPORTING TABLES BY PHASE/STATUS**

**Table 1
Final Plans Issued
As of Fiscal Year, Ending 2022**

SITE NAME	TOWN	COUNTY	DE SITE ID #	DATE FINAL PLAN ISSUED	TYPE OF SITE
A STREET AND	WILMINGTON	NEW CASTLE	1450	Dec-09	BF
A-1 AUTO SALVAGE	WILMINGTON	NEW CASTLE	1172	Jun-15	HSCA
A.M. DOMINO AUTO SAL- VAGE	WILMINGTON	NEW CASTLE	1173	Aug-12 Mar-21	BF
ALPHA SHOPS	WILMINGTON	NEW CASTLE	1763	Feb-22	BF
SITE NAME	TOWN	COUNTY	DE SITE ID #	DATE FINAL PLAN ISSUED	TYPE OF SITE
AMERICAN TANK CLEANING CO	WILMINGTON	NEW CASTLE	1180	Mar-18	BF
AMER INDUSTRIAL TECH- NOLOGIES OU 1 OU2	WILMINGTON	NEW CASTLE	1268	Dec-15 Jan-16 Sep- 18	BF
AMP CIRCUITS	NEWARK	NEW CASTLE	0248	May-10	VCP
AMTRAK CNOC	WILMINGTON	NEW CASTLE	1084	Apr-97	HSCA
AMTRAK MAINTENANCE FA- CILITY OU2	WILMINGTON	NEW CASTLE	0170	Mar-22 Aug-16 Dec-17	HSCA
AMTRAK WILMINGTON REFU- ELING STATION OU4	WILMINGTON	NEW CASTLE	0266	Jun-15 Nov-16 Oct-17	VCP
AMERICAN TANK CLEANING CO	WILMINGTON	NEW CASTLE	1180	Mar-18	BF
AMER INDUSTRIAL TECH- NOLOGIES OU 1 OU2	WILMINGTON	NEW CASTLE	1268	Dec-15 Jan-16 Sep-18	BF
AMP CIRCUITS	NEWARK	NEW CASTLE	0248	May-10	VCP
AMTRAK CNOC	WILMINGTON	NEW CASTLE	1084	Apr-97	HSCA
AMTRAK MAINTENANCE FA- CILITY OU2	WILMINGTON	NEW CASTLE	0170	Aug-16 Dec-17	HSCA
AMTRAK WILMINGTON REFU- ELING STATION OU4	WILMINGTON	NEW CASTLE	0266	Jun-15 Nov-16 Oct-17 Aug-20	VCP
ANCHOR MOTOR FREIGHT	NEWARK	NEW CASTLE	1034	Oct-96	VCP
ARCHIVES BUILDING	DOVER	KENT	1133	Aug-99	VCP
ASTRA ZENECA NORTH CAMPUS OU-1	WILMINGTON	NEW CASTLE	1662	Jul-20	VCP

**ATTACHMENT B (CONTINUED):
SITE REPORTING TABLES BY PHASE/STATUS**

**Table 1
Final Plans Issued
As of Fiscal Year, Ending 2022**

SITE NAME	TOWN	COUNTY	DE SITE ID #	DATE FINAL PLAN ISSUED	TYPE OF SITE
B STREET PACK AND PROCESS OU1 OU2	WILMINGTON	NEW CASTLE	1442	Jun-09 Jul-14 Feb-17	BF
BALTIMORE AIR COIL	DOVER	KENT	1501	Nov-17	VCP
BANCROFT MILLS	WILMINGTON	NEW CASTLE	1130	Oct-01	VCP
BARCROFT	LEWES	SUSSEX	0037	May-16	VCP
BASHER LANE	HOCKESSIN	NEW CASTLE	1310	Jun-07	BF
BAST PARKING LOT	GEORGETOWN	SUSSEX	1490	Jun-16	BF
BAYSHORE CAR &	BEAR	NEW CASTLE	1162	Nov-02	VCP
BELL FUNERAL HOME	WILMINGTON	NEW CASTLE	0327	May-15	BF

**ATTACHMENT B (CONTINUED):
SITE REPORTING TABLES BY PHASE/STATUS**

**Table 1
Final Plans Issued
As of Fiscal Year, Ending 2022**

SITE NAME	TOWN	COUNTY	DE SITE ID #	DATE FINAL PLAN ISSUED	TYPE OF SITE
BERGER BROS.	WILMINGTON	NEW CASTLE	0131	Dec-03	BF
BOA LOT DEW-22	WILMINGTON	NEW CASTLE	1673	May-21	VCP
BOA LOT DEW-23	WILMINGTON	NEW CASTLE	1672	May-21	VCP
BOULEVARD SITE	WILMINGTON	NEW CASTLE	1331	Sep-05	BF
BOWEN TRACT	HOCKESSIN	NEW CASTLE	1623	Dec-16	BF
BOYD'S CORNER FARM	MIDDLETOWN	NEW CASTLE	1499	Dec-11	VCP
BOYD'S CORNER	MIDDLETOWN	NEW CASTLE	1620	Jan-17	BF
BRANDYWINE FIBRE	WILMINGTON	NEW CASTLE	1109	Jan-09	BF
BRAUN PROPERTY	DOVER	KENT	1487	Aug-12	BF
BUDD METAL	WILMINGTON	NEW CASTLE	0270	Sep-06	BF
BURTON ISLAND OLD ASH LANDFILL OU1 & OU3	MILLSBORO	SUSSEX	1399	Aug-08	VCP
CABEAN SQUARES	WILMINGTON	NEW CASTLE	1081	Jun-98	VCP
CANNON SALVAGE	HARTLEY	KENT	0340	Jan-16	VCP
CARNEY MACHINERY	WILMINGTON	NEW CASTLE	1669	Jul-18	BF
CASPERS AUTO PARTS	WILMINGTON	NEW CASTLE	1185	Nov-16	HSCA
CASTLE FORD	NEW CASTLE	NEW CASTLE	0192	May-95	HSCA
CATHEDRAL OF ST JOHN	WILMINGTON	NEW CASTLE	1602	Jan-17 Mar-19	BF
CAVALIER COUNTRY CLUB OU1A & OU1B	NEWARK	NEW CASLTE	1600	Apr-22 Jan-19 Oct-19	VCP
CHEMSOLV REDEVELOP- MENT	CHESWOLD	KENT	1427	Jan-09	BF
CHESTNUT HILL PLAZA	NEWARK	NEW CASTLE	1391	Feb-09	VCP
CHICAGO BRIDGE & IRON OU2	NEW CASTLE	NEW CASTLE	1038	Aug-96	HSCA
CHRISTINA LABS	WILMINGTON	NEW CASTLE	1219	Jun-04	VCP
CHRISTINA LANDING	WILMINGTON	NEW CASTLE	1321	Sep-06	BF
CHRISTINA MARINA	WILMINGTON	NEW CASTLE	1293	Apr-07	BF
CHRISTINA PARK	WILMINGTON	NEW CASTLE	0300	Feb-05	HSCA
CHRISTINA RIVER BRIDGE	WILMINGTON	NEW CASTLE	0334	Oct-16	HSCA
CHRISTINA RIFERFRONT HOTEL	WILMINGTON	NEW CASTLE	1679	May-18	BF
CHRISTIANA RIVER PEDES- TRIAN	WILMINGTON	NEW CASTLE	1139	Jun-00	VCP
OU9				Jul-12	

**ATTACHMENT B (CONTINUED):
SITE REPORTING TABLES BY PHASE/STATUS**

**Table 1
Final Plans Issued
As of Fiscal Year, Ending 2022**

SITE NAME	TOWN	COUNTY	DE SITE ID #	DATE FINAL PLAN ISSUED	TYPE OF SITE
CHRYSLER ASSEMBLY PLANT OU1 OU2 OU2 OU3 OU3 OU4 OU5 OU6 OU8 OU9 OU9	NEWARK	NEW CASTLE	0105	Jun-12 Apr-14 Jun-12 May-18 May-12/ May22 Dec-10 Mar-12 Aug-11 May-12 Jul-12	BF
CITISTEEL OU1 OU4 OU6 OU7 OU2 OU3	CLAYMONT	NEW CASTLE	0046	Jun-16 Jul-16 Mar-17 Dec-17 Nov-18 Nov-18	VCP
CITY OF NEWARK PRO- POSED BIKEWAY	NEWARK	NEW CASTLE	1194	Mar-03 Sep-10	VCP
CLAYMONT CLEANERS	CLAYMONT	NEW CASTLE	1703	Nov-20	BF
CLAYVILLE DUMP	CHRISTIANA	NEW CASTLE	0095	Nov-02	VCP
CLEVELAND AVE LANDFILL	NEWARK	NEW CASTLE	0052	Jun-10 Nov-12 Jun-14	VCP
CLEVELAND HEIGHTS OU1 & OU2	NEWARK	NEW CASTLE	1367	Dec-13	BF
COBRA MACHINE	WILMINGTON	NEW CASTLE	1181	Mar-04	BF
COKE LANDFILL OU1 AND OU2	CHESWOLD	KENT	0004	Sep-90	NPL
COMMUNITY PLAZA NEW CASTLE OU-1 OU2	NEW CASTLE	NEW CASTLE	1567	Apr-19 Nov-19	VCP
CONAWAY MILLER	SEAFORD	SUSSEX	1533	Nov-13	BF
CONSOLIDATED FABRICA- TION	WILMINGTON	NEW CASTLE	1462	Feb-10	BF
CONTAINER CORP	WILMINGTON	NEW CASTLE	0094	Ocr-96	HSCA
CROZIER CENTER OUI	NEWARK	NEW CASTLE	1428	Jul-09	BF

**ATTACHMENT B (CONTINUED):
SITE REPORTING TABLES BY PHASE/STATUS**

**Table 1
Final Plans Issued
As of Fiscal Year, Ending 2022**

SITE NAME	TOWN	COUNTY	DE SITE ID #	DATE FINAL PLAN ISSUED	TYPE OF SITE
SITE NAME	TOWN	COUNTY	DE SITE ID #	DATE FINAL PLAN ISSUED	TYPE OF SITE
CROZIER CENTER OU2	NEWARK	NEW CASTLE	1428	Mar-10	BF
CROZIER CENTER OU3	NEWARK	NEW CASTLE	1428	Nov-12	BF
CSX PROPERTY	WILMINGTON	NEW CASTLE	1044	Mar-96	VCP
DAVIDSON LANE	NEW CASTLE	NEW CASTLE	1547	Dec-13	BF
DEEMER STEEL LANDFILL	NEW CASTLE	NEW CASTLE	0045	Mar-07	BF
DEEMER STEEL OU I	NEW CASTLE	NEW CASTLE	1243	Apr-02	VCP
DEEMER STEEL OU2	NEW CASTLE	NEW CASTLE	1244	Apr-02	VCP
DEERFIELD SUBSTATION	NEWARK	NEW CASTLE	1616	Mar-20	VCP
DEERFIELD FARMS	DOVER	KENT	1701	Oct-21	BF
DEL CHAPEL PLACE OU I	NEWARK	NEW CASTLE	1121	May-99	VCP
DEL CHAPEL PLACE OU II	NEWARK	NEW CASTLE	1124	Apr-00 Jul-18	VCP
DEL CHAPEL PLACE OU III	NEWARK	NEW CASTLE	1125	Nov-00	VCP
DEL CHAPEL PLACE OUIV	NEWARK	NEW CASTLE	1221	Aug-07	VCP
DELDOT WEST STREET CONNECTOR	WILMINGTON	NEW CASTLE	1157	Nov-02	VCP
DELAWARE & VAN BUREN STREET	WILMINGTON	NEW CASTLE	1419	Sep-08	BF
DELAWARE AIR NATIONAL GUARD	NEW CASTLE	NEW CASTLE	1003	Jul-19 Apr-21	HSCA
DELAWARE CAR COMPANY	WILMINGTON	NEW CASTLE	1059	Dec-00	VCP
DELAWARE CHILDREN'S MU- SEUM	WILMINGTON	NEW CASTLE	1434	Apr-09	BF
DELAWARE JOB CORP	WILMINGTON	NEW CASTLE	1241	Jun-02	HSCA
DELAWARE TECH WILMING- TON	WILMINGTON	NEW CASTLE	1089	Dec-99	VCP
DELMARVA RURAL MINISTRIES	WILMINGTON	NEW CASTLE	1523	Jan-12	BF
DELSTEEL FORMER	WILMINGTON	NEW CASTLE	1359	Apr-06	BF
DELTA OUTREACH AND EDU- CATION CENTER	WILMINGTON	NEW CASTLE	1504	Oct-11	BF
DENTON LANDFILL	NEW CASTLE	NEW CASTLE	0015	Jan-04	HSCA
DIAMOND OIL	WILMINGTON	NEW CASTLE	1129	May-94	VCP
DMA EXPANSION OU1 OU2 OU3	WILMINGTON	NEW CASTLE	1484	Jun-16 Jul-13 Jan-16	BF
DON WILSON AUTO PARTS	WILMINGTON	NEW CASTLE	1174	Nov-16	HSCA

**ATTACHMENT B (CONTINUED):
SITE REPORTING TABLES BY PHASE/STATUS**

**Table 1
Final Plans Issued
As of Fiscal Year, Ending 2022**

SITE NAME	TOWN	COUNTY	DE SITE ID #	DATE FINAL PLAN ISSUED	TYPE OF SITE
SITE NAME	TOWN	COUNTY	DE SITE ID #	DATE FINAL PLAN ISSUED	TYPE OF SITE
DONOHOS PAINT MANUFACTURING	DOVER	KENT	1312	Apr-21	VCP
DONOVAN SITE	LEWES	SUSSEX	0151	Apr-08	BF
DRAVO SHIPYARD OU II	WILMINGTON	NEW CASTLE	1096	Mar-01	VCP
DTC 2ND & WALNUT STREET	WILMINGTON	NEW CASTLE	1663	Aug-18	BF
DUPONT LOUVIER GORE	NEWARK	NEW CASTLE	1050	Jul-96 Mar-12	VCP
DUPONT STINE HASKELL RESEARCH CENTER	NEWARK	NEW CASTLE	0125	Jul-96	VCP
EAGLE RUN	NEWARK	NEW CASTLE	1039	Oct-10	VCP
EDEN HILL FARM OU4	DOVER	KENT	1714	Oct-21	VCP
ELECTRIC RUBBER & HOSE	WILMINGTON	NEW CASTLE	0174	Aug-20	BF
ESTATE OF LESTER NOLAN	WILMINGTON	NEW CASTLE	0165	Apr-97	VCP
ESTATE OF WILLIAM WARD	WILMINGTON	NEW CASTLE	1272	May-18	HSCA
FIVE POINTS FIRE COMPANY	WILMINGTON	NEW CASTLE	1168	Mar-02	HSCA
FIRST STATE MILITARY ACADEMY	CLAYTON	KENT	1565	Jun-15	BF
FORK BRANCH SCHOOL	DOVER	KENT	1676	May-21	HSCA
FORMER ABLE MACHINE	NEW CASTLE	NEW CASTLE	1576	May-15	BF
FORMER AIR PRODUCTS	NEW CASTLE	NEW CASTLE	1570	Jun-17	BF
FORMER AMERICAN SCRAP & WASTE	WILMINGTON	NEW CASTLE	1131	May-11 Oct-12 Sep-15	BF
FORMER AMOCO POLYMER	NEW CASTLE	NEW CASTLE	0084	Oct-05	HSCA
FORMER AMOCO POLYMER PLANT OU2	NEW CASTLE	NEW CASTLE	1368	Jul-07	VCP
FORMER AVON PRODUCTS	NEWARK	NEW CASTLE	1595	Mar-17	BF
FORMER BABS REAL ESTATE	WILMINGTON	NEW CASTLE	1277	Sep-04	BF
FORMER BELLANCA HANGER	NEW CASTLE	NEW CASTLE	1061	Jul-01	VCP
FORMER BOBS SPEED SHOP	LAUREL	SUSSEX	1654	Sep-19	BF
FORMER BURNS & MCBRIDE	WILMINGTON	NEW CASTLE	0325	Aug-08	BF
FORMER BP TRUCK STOP	NEW CASTLE	NEW CASTLE	1592	Oct-15	BF
FORMER CAPITAL SCRAP	DOVER	KENT	1171	Dec-08	BF

**ATTACHMENT B (CONTINUED):
SITE REPORTING TABLES BY PHASE/STATUS**

**Table 1
Final Plans Issued
As of Fiscal Year, Ending 2022**

SITE NAME	TOWN	COUNTY	DE SITE ID #	DATE FINAL PLAN ISSUED	TYPE OF SITE
FORMER CHESAPEAKE SUPPLY	DOVER	KENT	1334	Mar-11 Jun-17	BF
FORMER CHESTNUT HILL EXXON	NEWARK	NEW CASTLE	1520	Mar-13	BF
FORMER COMMONS BLVD SUNOCO	NEW CASTLE	NEW CASTLE	1514	Apr-14	BF
SITE NAME	TOWN	COUNTY	DE SITE ID #	DATE FINAL PLAN ISSUED	TYPE OF SITE
FORMER COMMUNICATION PRINTERS	NEWARK	NEW CASTLE	1599	Feb-16	BF
FORMER CLASSIC IMAGE OU1	NEWPORT	NEW CASTLE	1464	May-16	BF
FORMER DAGSBORO SUB-STATION	DAGSBORO	SUSSEX	1287	Jan-06	VCP
FORMER DEL CAMP BAKERY	WILMINGTON	NEW CASTLE	1736	Mar-22	BF
FORMER DELAWARE OLDSMOBILE	WILMINGTON	NEW CASTLE	1289	Aug-03	VCP
FORMER DELMAR NEWS	WILMINGTON	NEW CASTLE	1615	Jan-17	BF
FORMER DELSTEEL	WILMINGTON	NEW CASTLE	1359	Apr-06	BF
FORMER DOVER ICE PLANT	DOVER	KENT	1110	Jun-04	BF
FORMER DOVER PRODUCTS OU-1	DOVER	KENT	1617	Aug-17 Jan-21	BF
FORMER DP&L ELSMERE SUBSTATION	ELSMERE	NEW CASTLE	1186	Jun-07	HSCA
FORMER EASTERN DISPOSAL RUBBLE PIT	DOVER	KENT	0066	Apr-07	BF
FORMER FREE FLOW PACKAGING	NEWARK	NEW CASTLE	1597	Jan-16	BF
FORMER FOULK ROAD GETTY	WILMINGTON	NEW CASTLE	1482	May-11	BF
FORMER GEORGE GRAY ELEMENTARY SCHOOL	WILMINGTON	NEW CASTLE	1138	May-14	HSCA
FORMER GEORGETOWN SUBSTATION	GEORGETOWN	SUSSEX	1286	Jul-09	VCP
FORMER GILDEA NURSERY	NEWARK	NEW CASTLE	1251	Aug-04	VCP
FORMER GREENWOOD SERVICE STATION	GREENWOOD	NEW CASTLE	1619	Apr-16	BF
FORMER HERCULES ROAD AND LANCASTER PIKE	WILMINGTON	NEW CASTLE	1492	May-12	VCP

**ATTACHMENT B (CONTINUED):
SITE REPORTING TABLES BY PHASE/STATUS**

**Table 1
Final Plans Issued
As of Fiscal Year, Ending 2022**

SITE NAME	TOWN	COUNTY	DE SITE ID #	DATE FINAL PLAN ISSUED	TYPE OF SITE
FORMER HOLLY OAK SUBSTA- TION	CLAYMONT	NEW CASTLE	1200	Dec-03 Apr-15	HSCA
FORMER INSTEEL WIRE	WILMINGTON	NEW CASTLE	1507	Oct-17	BF
FORMER J&H AUTO SALVAGE OU1	ELLEDALE	SUSSEX	1469	Jan-19	HSCA
FORMER JAMES JULIAN	WILMINGTON	NEW CASTLE	1497	Oct-11	BF
FORMER KING COLE CAN- NERY	MILTON	SUSSEX	1252	Feb-06	BF
FORMER KIRKWOOD HIGH- WAY GULF OU1	WILMINGTON	NEW CASTLE	1495	May-22 Oct-11	BF
SITE NAME	TOWN	COUNTY	DE SITE ID #	DATE FINAL PLAN ISSUED	TYPE OF SITE
FORMER LEWES BOAT YARD	LEWES	SUSSEX	1167	Aug-01	BF
FORMER MCGRELLIS AUC- TION HOUSE	HOCKESSIN	NEW CASTLE	1610	Jan-18	BF
FORMER MIKE'S MINI MART	FREDERICA	KENT	1578	Jun_17	BF
FORMER MIL-DEL	MILFORD	SUSSEX	1634	Jun-17	BF
FORMER MILTON RIVER- FRONT	MILTON	SUSSEX	1517	Oct-12	BF
FORMER MITCHELL SHOP	BEAR	NEW CASTLE	1720	Mar-21	BF
FORMER MODERN EQUIP- MENT	WILMINGTON	NEW CASTLE	1557	Sep-15	BF
FORMER MOREHEAT	WILMINGTON	NEW CASTLE	1613	Apr-16	BF
FORMER NEW ARC WELDING	WILMINGTON	NEW CASTLE	1345	Apr-10	BF
FORMER OCEANIC GAS STA- TION	WILMINGTON	NEW CASTLE	1562	Jun-15	BF
FORMER PACK & PROCESS OU3	WILMINGTON	NEW CASTLE	1421	Jul-14	BF
FORMER PENINSULA PLATING	BLADES	SUSSEX	0287	Apr-07	BF
FORMER PENNY HILL MOBILE	CLAYMONT	NEW CASTLE	1596	Nov-16	BF
FORMER PEP UP	GEORGETOWN	SUSSEX	1491	May-12	BF
FORMER PEP UP OU2	GEORGETOWN	SUSSEX	1571	Mar-15	HSCA
FORMER PEP UP CALHOUN	GEORGETOWN	SUSSEX	1414	Oct-08	BF
FORMER PERMAFLEX ROLL- ERS	NEWARK	NEW CASTLE	1512	Jun-14	BF
FORMER PHILADELPHIA PIKE TEXACO	WILMINGTON	NEW CASTLE	1622	May-16	BF
FORMER PIT STOP DELI	FELTON	KENT	1666	Nov-18	BF

**ATTACHMENT B (CONTINUED):
SITE REPORTING TABLES BY PHASE/STATUS**

**Table 1
Final Plans Issued
As of Fiscal Year, Ending 2022**

SITE NAME	TOWN	COUNTY	DE SITE ID #	DATE FINAL PLAN ISSUED	TYPE OF SITE
FORMER PLAYTEX PROPERTY	DOVER	KENT	1552	Jul-14 Oct-16	BF
FORMER RODNEY DORM COMPLEX	NEWARK	NEW CASTLE	1658	Jun-18	BF
FORMER SEARS DISTRIBUTION	WILMINGTON	NEW CASTLE	1445	Mar-10	BF
FORMER SELBYVILLE FOODRITE	SELBYVILLE	SUSSEX	1660	Mar-18	BF
FORMER SMO GAS STATION	NEWARK	NEW CASTLE	1537	Oct-14	BF
FORMER SOUTH DUPONT SHELL STATION	NEW CASTLE	NEW CASTLE	1510	May-17	BF
FORMER SOUTHWOOD FARMS	HOCKESSIN	NEW CASTLE	1306	Jan-08	VCP
FORMER STAR BUILDING	WILMINGTON	NEW CASTLE	1425	Aug-08	BF
FORMER STRAIGHT-LINE FILTERS	WILMINGTON	NEW CASTLE	1488	May-12	BF
SITE NAME	TOWN	COUNTY	DE SITE ID #	DATE FINAL PLAN ISSUED	TYPE OF SITE
FORMER SUNOCO TANK FARM	WILMINGTON	NEW CASTLE	1238	Jul-08 Jun-13	VCP
FORMER SUPER SODA CENTER MILFORD	MILFORD	SUSSEX	1583	Jul-15	BF
FORMER TAKE A BREAK	WILMINGTON	NEW CASTLE	1579	Jul-15	BF
FORMER THOMPSON GAS STATION	LAUREL	SUSSEX	1472	Jan-21	BF
FORMER THORO-KLEEN DRY CLEANERS	GEORGETOWN	SUSSEX	0207	Dec-20	BF
FORMER TIMKO BROTHERS LANDFILL	WILMINGTON	NEW CASTLE	0055	Jan-19	BF
FORMER TIMMONS MARINA	DAGSBORO	SUSSEX	1360	Sep-06	BF
FORMER WILSON BAKER BULK PLANT	GEORGETOWN	SUSSEX	1417	Aug-10	BF
FORMER WINGS TO GO	WILMINGTON	NEW CASTLE	1513	Oct-15	BF
FORT DUPONT REDEVELOPMENT OU-3 OU2	DELAWARE CITY	NEW CASTLE	1618	Jul-21 Jul-17 Jul-18	HSCA
FOX POINT PARK PHASE I	WILMINGTON	NEW CASTLE	1001	Dec-92	HSCA
FOX POINT PARK PHASE II	WILMINGTON	NEW CASTLE	1011	Dec-05 Feb-20	HSCA

**ATTACHMENT B (CONTINUED):
SITE REPORTING TABLES BY PHASE/STATUS**

**Table 1
Final Plans Issued
As of Fiscal Year, Ending 2022**

SITE NAME	TOWN	COUNTY	DE SITE ID #	DATE FINAL PLAN ISSUED	TYPE OF SITE
FRANKLIN FIBRE	WILMINGTON	NEW CASTLE	1511	May-12	BF
FRAZIER PIT LANDFILL	DOVER	KENT	0154	Jul-98	VCP
FREAR PROPERTY	CAMDEN- WYOMING	KENT	1559	Oct-13	VCP
GARRETT HOUSE	WILMINGTON	NEW CASTLE	1466	Aug-09	BF
GENERAL MOTORS CORP WILMINTON OU1, OU2, OU3, & OU6 OU5	WILMINGTON	NEW CASTLE	1149	Dec-15 Aug-19	BF
GEORGETOWN COAL GAS	GEORGETOWN	SUSSEX	0188	Mar-07	VCP
GEORGETOWN COAL GAS OU2	GEORGETOWN	SUSSEX	0188	Mar-15	VCP
GLASGOW CITGO	GLASGOW	NEW CASTLE	1699	Mar-21	BF
GLASGOW FARMS	GLASGOW	NEW CASTLE	1122	Feb-99	VCP
GOVERNOR SQUARE DRY CLEANER	BEAR	NEW CASTLE	1649	Aug-18	VCP
GRAYS FINE PRINTING	WILMINGTON	NEW CASTLE	1094	Jun-98	VCP
GROWMARK FS MILFORD	MILFORD	SUSSEX	1326	Aug-11	VCP
GRUBB ROAD	WILMINGTON	NEW CASTLE	0279	Jun-98	HSCA
HABITAT FOR HUMANITY	WILMINGTON	NEW CASTLE	1372	Jan-07	BF
SITE NAME	TOWN	COUNTY	DE SITE ID #	DATE FINAL PLAN ISSUED	TYPE OF SITE
HABITAT FOR HUMANITY 14TH & WALNUT	WILMINGTON	NEW CASTLE	1534	Oct-14	BF
Hamilton Park OU1 OU2 OU 4, 5, 6 OU 7, 8, 9, 10 OU 11, 12, 13, 14 OU 21, 22, 23 OU 24, 25, 26, 27, 28 OU 29, 30, 31 OU 32, 33 OU 34, 35, 36, 37, 38, 39	WILMINGTON	NEW CASTLE	1284	Apr-10 Sep-11 Aug-13 Aug-14 Apr-15 Aug-16 Aug-17 Sep-18 Oct-18 Aug-19	HSCA
HAMPTON INN CHRISTIANA	NEWARK	NEW CASTLE	1541	Oct-13	VCP
HARPER THEIL	WILMINGTON	NEW CASTLE	0197	Aug-07	HSCA
HARRY WOOD LANDFILL OU1	WILMINGTON	NEW CASTLE	1493	Aug-11	BF
HARRY WOOD LANDFILL OU2	WILMINGTON	NEW CASTLE	0016	Oct-14	VCP

**ATTACHMENT B (CONTINUED):
SITE REPORTING TABLES BY PHASE/STATUS**

**Table 1
Final Plans Issued
As of Fiscal Year, Ending 2022**

SITE NAME	TOWN	COUNTY	DE SITE ID #	DATE FINAL PLAN ISSUED	TYPE OF SITE
HARVEY AND HARVEY LAND-FILL	GLASGOW	NEW CASTLE	0047	Feb-97	VCP
HASTING DRY CLEANERS	DOVER	KENT	1010	Jun-95	HSCA
HAY STREET SLUDGE DRY-	WILMINGTON	NEW CASTLE	0024	Jan-09	VCP
HEALTHWAYS INC OU 1	ODESSA	NEW CASTLE	0252	Feb-98	HSCA
HEALTHWAYS INC OU2	ODESSA	NEW CASTLE	1318	Mar-09	HSCA
HELEN CHAMBERS PARK	WILMINGTON	NEW CASTLE	1188	Oct-01	VCP
HERCULES FARM	WILMINGTON	NEW CASTLE	1048	Apr-97	VCP
HESSLER PROPERTY	WILMINGTON	NEW CASTLE	1203	Mar-18	BF
HOMALITE	WILMINGTON	NEW CASTLE	0256	Apr-18	BF
HOWARD STREET	WILMINGTON	NEW CASTLE	1401	Jan-09	BF
HUDSON PIT	LEWES	SUSSEX	0107	Jun-15	BF
ICI AMERICAS	NEW CASTLE	NEW CASTLE	0049	May-06	VCP
INDIAN RIVER DCP	MILLSBORO	SUSSEX	1028	Jun-98	HSCA
INTERNATIONAL PETROLEUM CORP.	WILMINGTON	NEW CASTLE	1278	May-05	VCP
INTERSECTION OF RT13 &	DOVER	KENT	1393	Dec-07	BF
ION POWER	NEW CASTLE	NEW CASTLE	1322	Jun-06	BF
JABLOW PROPERTY	WILMINGTON	NEW CASTLE	1329	Jun-17	BF
JACKSON PIT	LEWES	SUSSEX	0149	Aug-03	BF
JG TOWNSEND FROZEN	GEORGETOWN	SUSSEX	0208	Jan-07	VCP
JG TOWNSEND OUI	GEORGETOWN	SUSSEX	1338	Sep-09	VCP
JIFFY LUBE CONCORD PIKE	WILMINGTON	NEW CASTLE	1471	Mar-10	VCP
JOE WHITE MEMORIAL BALL-FIELD	WILMINGTON	NEW CASTLE	0299	Feb-05	HSCA
JOHNS AUTO SHOP	WILMINGTON	NEW CASTLE	1683	Aug-19	BF
JUNIORS AUTO REPAIR	WILMINGTON	NEW CASTLE	1176	Apr-20	VCP
SITE NAME	TOWN	COUNTY	DE SITE ID #	DATE FINAL PLAN ISSUED	TYPE OF SITE
JUSTISON LANDING PHASE 1	WILMINGTON	NEW CASTLE	1377	Apr-06	BF
JUSTISON LANDING PARCEL	WILMINGTON	NEW CASTLE	1674	Feb-22	BF
KALMAR NYCKEL	WILMINGTON	NEW CASTLE	0339	Jul-09	BF
KANEKA CORPORATION	DELAWARE CITY	NEW CASTLE	1292	Jan-04	VCP
KEMPF STORAGE	WILMINGTON	NEW CASTLE	1481	Jan-14	BF
KENT BUILDING	WILMINGTON	NEW CASTLE	1197	Nov-00	VCP
KENT COUNTY HOUSTON	HOUSTON	KENT	0029	Feb-98	HSCA
KENTON LANDFILL OU I	KENTON	KENT	0108	Jul-03	HSCA
KENTON LANDFILL #2	KENTON	KENT	1037	Jul-03	HSCA
KIRK BUILDING	WILMINGTON	NEW CASTLE	1132	Jun-99	VCP
KREWATCH FARM PHASE 1	SEAFORD	SUSSEX	0109	Jun-03	HSCA

**ATTACHMENT B (CONTINUED):
SITE REPORTING TABLES BY PHASE/STATUS**

**Table 1
Final Plans Issued
As of Fiscal Year, Ending 2022**

SITE NAME	TOWN	COUNTY	DE SITE ID #	DATE FINAL PLAN ISSUED	TYPE OF SITE
KREWATCH FARM PHASE 2	SEAFORD	SUSSEX	1077	Jun-03	HSCA
KRIEGER FINGER	WILMINGTON	NEW CASTLE	1067	Aug-09	VCP
KRUSE PLAYGROUND	WILMINGTON	NEW CASTLE	0111	Dec-06	VCP
LARRY LONG SITE	LEWES	SUSSEX	0232	Feb-17	HSCA
LAUREL GRAIN 2	LAUREL	SUSSEX	1625	Oct-16	BF
LEBANON CHEMICAL	SEAFORD	SUSSEX	1027	Feb-97	VCP
LEISURE HAVEN MOBILE	CAMDEN	KENT	1136	Aug-14	HSCA
LEWES COAL GAS	LEWES	SUSSEX	0190	Jul-98	VCP
LIDL GROCERY STORE	DOVER	KENT	1643	Mar-19	BF
LIMESTONE ROAD SHOP- PING CENTER	MARSHALLTON	NEW CASTLE	1418	Jun-08	BF
LIPPINCOTT PROPERTY	WILMINGTON	NEW CASTLE	1430	Jan-09	BF
LIQUID ALCHEMY	WILMINGTON	NEW CASTLE	1605	Apr-16	BF
M & N PROPERTY	WILMINGTON	NEW CASTLE	1496	Aug-11	BF
MADISON GARDEN APART- MENTS	WILMINGTON	NEW CASTLE	1332	May-05	BF
MADISON STREET CONNEC- TION	WILMINGTON	NEW CASTLE	1085	Sep-98	VCP
MAFFETT 12TH STREET	WILMINGTON	NEW CASTLE	1299	Dec-05	VCP
MARINA OVERLOOK OU1 & OU2	WILMINGTON	NEW CASTLE	1328	Sep-12	BF
MARTIN AUTOMOTIVE	NEW CASTLE	NEW CASTLE	1708	Jul-20	BF
MARY B LEISURE SCHOOL	BEAR	NEW CASTLE	1088	Jun-98	HSCA
MARYLAND AVE & I-95	WILMINGTON	NEW CASTLE	1099	Feb-99	VCP
MEADWOOD II SHOPPING	NEWARK	NEW CASTLE	1477	Feb-17	VCP
MECO DRIVE	WILMINGTON	NEW CASTLE	1103	Aug-06	HSCA
MERKIN AUTO OU1	WILMINGTON	NEW CASTLE	1175	Oct-11	BF
MERKIN AUTO OU2	WILMINGTON	NEW CASTLE	1476	Oct-10	BF
METAL MASTER	SMRYNA	NEW CASTLE	0043	Sep-17	BF
MIDDLETOWN MANOR	MIDDLETOWN	NEW CASTLE	1483	Oct-11	BF
MIGHTY MUFFLER	CLAYMONT	NEW CASTLE	1536	Jul-14	BF
MILFORD MOSQUITO CON- TROL SHOP OU-1	MILFORD	SUSSEX	1156	Jul-17	HSCA
SITE NAME	TOWN	COUNTY	DE SITE ID #	DATE FINAL PLAN ISSUED	TYPE OF SITE
MILLSBORO DUMP	MILLSBORO	SUSSEX	1056	Oct-10	HSCA
MILLSBORO TCE GROUND- WATER	MILLSBORO	SUSSEX	1361	Jan-08	HSCA
MILTON RAILS TO TRAILS PHASE 1	MILTON	SUSSEX	1460	Jun-09	BF

**ATTACHMENT B (CONTINUED):
SITE REPORTING TABLES BY PHASE/STATUS**

**Table 1
Final Plans Issued
As of Fiscal Year, Ending 2022**

SITE NAME	TOWN	COUNTY	DE SITE ID #	DATE FINAL PLAN ISSUED	TYPE OF SITE
MILTON RAILS TO TRAILS PHASE 2 & 3	MILTON	SUSSEX	1460	Sep-10	BF
MINISTRY ROW	WILMINGTON	NEW CASTLE	1452	Mar-09	BF
MLK BLVD	WILMINGTON	NEW CASTLE	1155	Jun-00	VCP
MOORE BROTHERS	NEW CASTLE	NEW CASTLE	1117	Feb-99	VCP
MOORE PROPERTY	SEAFORD	SUSSEX	0202	Oct-97	HSCA
MORRIS WORK RELEASE	DOVER	KENT	1143	Aug-99	VCP
MOTOR WHEEL	NEWARK	NEW CASTLE	0175	Jul-94	HSCA
MOVABLE FEAST	WILMINGTON	NEW CASTLE	1063	Jan-97	VCP
NAAMONS ROAD TEXACO	WILMINGTON	NEW CASTLE	1135	Sep-99	VCP
NAGA FOODS	WILMINGTON	NEW CASTLE	1369	Apr-07	BF
NANTICOKE HOMES OU1 & OU2	GREENWOOD	SUSSEX	0235	Dec-13 Nov-13	HSCA
NEW CASTLE AVE & B STREET	WILMINGTON	NEW CASTLE	1396	Mar-11	BF
NEW CASTLE COUNTY RAIL	NEW CASTLE	NEW CASTLE	1475	Jan-10	VCP
NEW CASTLE GAS COMPANY	NEW CASTLE	NEW CASTLE	0167	Feb-13	BF
NEW MARKET VILLAGE	ELLENDALE	SUSSEX	1075	Jul-98	HSCA
NEWARK LANDFILL	NEWARK	NEW CASTLE	0039	Nov-02	VCP
NEWARK LUMBER	NEWARK	NEW CASTLE	1140	Jun-99	VCP
NEWPORT BOAT RAMP	NEWPORT	NEW CASTLE	1159	Feb-01	HSCA
NORTHERN PATHWAY	WILMINGTON	NEW CASTLE	1385	Jul-06	BF
NVF NEWARK	NEWARK	NEW CASTLE	0199	Oct-00	BF
NVF YORKLYN OU-2 OU-3	YORKLYN	NEW CASTLE	0071	Apr-22 Mar-22 Jul-15 Jan-16 Jul-19	HSCA
NVF WILMINGTON	WILMINGTON	NEW CASTLE	1374	Mar-21	BF
ONE CHRISTIANA CENTER	WILMINGTON	NEW CASTLE	1076	Dec-96	VCP
ONE RIVERPLACE HEAD- QUARTERS	WILMINGTON	NEW CASTLE	1309	Oct-04	BF
OSPREY POINT SUBDIVI- SION	REHOBOTH BEACH	SUSSEX	1647	Feb-20	VCP
OWENS STATION OU1 & OU2	GREENWOOD	SUSSEX	1350	Jan-14	HSCA
OYSTER HOUSE VILLAGE	REHOBOTH	SUSSEX	1573	Sep-15	BF
P & C ROOFING FORMER	WILMINGTON	NEW CASTLE	1158	Jan-09	BF
PANELLA SKI SHOP	WILMINGTON	NEW CASTLE	1423	Dec-09	BF
SITE NAME	TOWN	COUNTY	DE SITE ID #	DATE FINAL PLAN ISSUED	TYPE OF SITE

**ATTACHMENT B (CONTINUED):
SITE REPORTING TABLES BY PHASE/STATUS**

**Table 1
Final Plans Issued
As of Fiscal Year, Ending 2022**

SITE NAME	TOWN	COUNTY	DE SITE ID #	DATE FINAL PLAN ISSUED	TYPE OF SITE
PAVILION PROPERTY	WILMINGTON	NEW CASTLE	1395	Jan-09	BF
PB WILMINGTON RF 228	WILMINGTON	NEW CASTLE	1640	Nov-17	BF
PEARSONS CORNER	DOVER	KENT	1411	Dec-14	HSCA
PEE WEE'S TRUCK STOP	CHESWOLD	KENT	1047	Jun-96	VCP
PENCADER LOT	NEWARK	NEW CASTLE	1098	Feb-99	VCP
PENCADER PLAZA DRY CLEANERS	NEWARK	NEW CASTLE	1551	Jul-16	VCP
PENINSULA PARK	WILMINGTON	NEW CASTLE	1147	May-03	BF
PENINSULA VENTURES	WILMINGTON	NEW CASTLE	1294	Nov-04	BF
PETRILLO PROPERTY	NEW CASTLE	NEW CASTLE	1281	Oct-03	BF
POSSUM PARK MALL DRY CLEANERS	NEWARK	NEW CASTLE	1629	Nov-16	VCP
POTTS PROPERTY	WILMINGTON	NEW CASTLE	0169	Aug-00	VCP
PROCESS INDUSTRIES	WILMINGTON	NEW CASTLE	1032	May-96	VCP
PROCINO PLANTING	BLADES	SUSSEX	0344	Aug-16	VCP
PROPOSED NEW CASTLE COUNTY COURT HOUSE	WILMINGTON	NEW CASTLE	1146	Jun-99	VCP
PURINA TOWER A OU1	WILMINGTON	NEW CASTLE	1263	Jun-13	BF
PURINA TOWER B OU1	WILMINGTON	NEW CASTLE	1264	Jun-13	HSCA
RAILROAD CROSSING	WILMINGTON	NEW CASTLE	1292	Jan-09	BF
RAMBELTON ACRES AUTO	NEW CASTLE	NEW CASTLE	1470	Sep-09	VCP
RED LION ROAD	BEAR	NEW CASTLE	1100	Nov-01	VCP
REICHHOLD CHEMICAL	CHESWOLD	KENT	0245	Aug-04 Dec-15 Aug-17	HSCA
RIEBMAN RR EASEMENT	WILMINGTON	NEW CASTLE	1463	Oct-10	VCP
RIVERFRONT HOTEL	WILMINGTON	NEW CASTLE	1518	Sep-12	BF
RIVERFRONT OFFICE BUILD- ING	WILMINGTON	NEW CASTLE	1237	Jun-16	BF
RIVERFRONT PARK	WILMINGTON	NEW CASTLE	1116	Jul-98	VCP
RIVERHOUSE I	WILMINGTON	NEW CASTLE	1696	Jan-20	BF
RIVERWALK APARTMENTS	NEW CASTLE	NEW CASTLE	1641	Apr-17	VCP
RIVERWALK AT DEEMERS	NEW CASTLE	NEW CASTLE	1324	Oct-16	VCP
RIVERWALK PHASE V	WILMINGTON	NEW CASTLE	1164	Feb-00	VCP
RODNEY VILLAGE	DOVER	KENT	1288	Mar-07	VCP
RT. 4 ORCHARD	NEWARK	NEW CASTLE	1271	Aug-03	VCP

**ATTACHMENT B (CONTINUED):
SITE REPORTING TABLES BY PHASE/STATUS**

**Table 1
Final Plans Issued
As of Fiscal Year, Ending 2022**

SITE NAME	TOWN	COUNTY	DE SITE ID #	DATE FINAL PLAN ISSUED	TYPE OF SITE
SITE NAME	TOWN	COUNTY	DE SITE ID #	DATE FINAL PLAN ISSUED	TYPE OF SITE
RT 40 DRUM SITE	GLASGOW	NEW CASTLE	0141	Jul-98	HSCA
SARDO & SONS	WILMINGTON	NEW CASTLE	1105	Apr-02	VCP
SEABOARD LUMBER	BRIDGEVILLE	SUSSEX	0251	Dec-10 Oct-14	HSCA
SEAFORD POWER PLANT	SEAFORD	SUSSEX	1031	Mar-18	BF
SCHWARTZ PROPERTY OU1 & OU2	WILMINGTON	NEW CASTLE	1389	Jan-14	BF
SCHOONER LANDING	SELBYVILLE	SUSSEX	1766	Mar-22	VCP
SCULL PROPERTY	DOVER	KENT	0153	May-04	VCP
SHUSTERS AUTO SALVAGE	WILMINGTON	NEW CASTLE	1178	Mar-17	BF
SIP	WILMINGTON	NEW CASTLE	1408	Nov-21 Jan-22 Mar-22	BF
SMYRNA COAL GAS	SMYRNA	KENT	0189	Apr-96	HSCA
SOUTH GARASCHESS LANE	WILMINGTON	NEW CASTLE	1681	Dec-18	BF
SOUTH WALNUT STREET	WILMINGTON	NEW CASTLE	1725	May-21	BF
SOUTH WILMINGTON	WILMINGTON	NEW CASTLE	1500	Mar-17	BF
SPEAKMAN PROPERTY	WILMINGTON	NEW CASTLE	1060	Mar-99	VCP
SPEAKMAN TOWNHOMES	WILMINGTON	NEW CASTLE	1347	Oct-06	BF
ST. GEORGES BRIDGE	ST. GEORGES	NEW CASTLE	1193	Jun-05	HSCA
ST. PATRICKS HOUSE	WILMINGTON	NEW CASTLE	0355	Apr-13	BF
STEVENSON LANE	GEORGETOWN	SUSSEX	0224	Apr-16	VCP
SUMMIT LANDFILL	MIDDLETOWN	NEW CASTLE	0074	Oct-07	HSCA
SUNDAY BREAKFAST MISSION	WILMINGTON	NEW CASTLE	1083	Apr-09	BF
SUSSEX COUNTY LANDFILL	BRIDGVILLE	SUSSEX	0122	Apr-14	HSCA
SUSSEX COUNTY LANDFILL	GEORGETOWN	SUSSEX	0129	Apr-14	HSCA
SUSSEX COUNTY LANDFILL	ANGOLA	SUSSEX	0130	Apr-14	HSCA
SUSSEX COUNTY LANDFILL	MILFORD	SUSSEX	0160	Apr-14	HSCA
SUSSEX COUNTY LANDFILL	LAUREL	SUSSEX	0013	Dec-94	HSCA
SUSSEX COUNTY LANDFILL	OMAR	SUSSEX	0123	Apr-14	HSCA
SUSSEX FAMILY COURT	GEORGETOWN	SUSSEX	1776	May-22	BF
SUSSEX LUMBER OU1	LEWES	SUSSEX	0118	Aug-18	HSCA
SUSSEX MATERIAL	MILFORD	SUSSEX	1342	Apr-06	BF
SWAIN PROPERTY	MILFORD	SUSSEX	1686	Jun-19	BF
SYNTECH	NEWARK	NEW CASTLE	0173	Jul-03	HSCA
SYNTECH OU2	NEWARK	NEW CASTLE	0173	Aug-14	HSCA
TACO BELL CONCORD PIKE	WILMINGTON	NEW CASTLE	1439	Jan-10	VCP
TALLEYVILLE SUNOCO	WILMINGTON	NEW CASTLE	1715	Aug-22	BF

**ATTACHMENT B (CONTINUED):
SITE REPORTING TABLES BY PHASE/STATUS**

Table 1

**Final Plans Issued
As of Fiscal Year, Ending 2022**

SITE NAME	TOWN	COUNTY	DE SITE ID #	DATE FINAL PLAN ISSUED	TYPE OF SITE
TERMINAL AVE	WILMINGTON	NEW CASTLE	1026	Jul-96	VCP
THOMPSON PROPERTY	LEWES	SUSSEX	1527	Apr-13	BF
SITE NAME	TOWN	COUNTY	DE SITE ID #	DATE FINAL PLAN ISSUED	TYPE OF SITE
TIEMAN PROPERTY	DOVER	KENT	1550	Dec-15	BF
TONI DRY CLEANERS	ELSMERE	NEW CASTLE	1005	Jan-01 Feb-14	HSCA
TRAILS AND PATHWAYS C & D CANAL	BEAR	NEW CASTLE	1548	Jun-14	HSCA
TRAILS AND PATHWAYS CHRISTINA PEDESTRIAN BRIDGE	WILMINGTON	NEW CASTLE	1560	Jun-15 Nov-20	HSCA
TWO GUYS AUTO PARTS	WILMINGTON	NEW CASTLE	1177	Oct-17	VCP
UP THE CREEK RESTURANT	WILMINGTON	NEW CASTLE	1384	May-11	BF
VEI DOVER CROSSROADS	DOVER	KENT	1611	Feb-16	BF
VICTORIA WOODS	BEAR	NEW CASTLE	1033	Jun-95	HSCA
VILLA MARIA	WILMINGTON	NEW CASTLE	1728	Jan-21	BF
WALKER FARM PROPERTY	HOCKESSIN	NEW CASTLE	1607	Feb-16	VCP
WEST FOURTH STREET &	WILMINGTON	NEW CASTLE	1682	Jan-19	BF
WEST 7TH STREET	WILMINGTON	NEW CASTLE	1078	Oct-18	BF
WEST STREET CON.	WILMINGTON	NEW CASTLE	1157	Nov-02	VCP
WHITTINGTON WOODS OU-1	BEAR	NEW CASTLE	1509	Aug-12	VCP
WILEY CORK	WILMINGTON	NEW CASTLE	0324	Aug-07	BF
WILMINGTON COAL GAS - NORTH	WILMINGTON	NEW CASTLE	1046	Sep-04	VCP
WILMINGTON COAL GAS- SOUTH	WILMINGTON	NEW CASTLE	0114	Dec-10	VCP
WILMINGTON PIECE	WILMINGTON	NEW CASTLE	1304	Feb-17	VCP
WILMINGTON UNIVERSITY	WILMINGTON	NEW CASTLE	1612	May-16	BF
WILSON PROPERTY	WILMINGTON	NEW CASTLE	1655	Apr-18	BF

**ATTACHMENT B (CONTINUED):
SITE REPORTING TABLES BY PHASE/STATUS**

Table 2

**HSCA Active Sites & Projected Status
as of Fiscal Year Ending 2022**

SITE NAME	TOWN	COUNTY	DE SITE ID #	PROJECTED STATUS OF REMEDIATION
12 TH STREET DRUM SITE	WILMINGTON	NEW CASTLE	0294	ON HOLD
65 NORH DUPONT HIGH- WAY	DOVER	KENT	1687	REMEDIAL INVES- TIGATION (RI) COMPLETE
101 N. POPLAR STREET	WILMINGTON	NEW CASTLE	1134	LP
105 S MARKET STREET	WILMINGTON	NEW CASTLE	0341	LP
307 NORTH CENTRAL AVE	LAUREL	SUSSEX	1692	RI COMPLETE
1001 NEW CASTLE AVE	WILMINGTON	NEW CASTLE	0369	LP
1200 WALNUT STREET	WILMINGTON	NEW CASTLE	1220	LP
1251 CENTERVILLE ROAD	WILMINGTON	NEW CASTLE	1554	LP
1610/0 BOWERS STREET	WILMINGTON	NEW CASTLE	1440	LP
AIRPORT INDUSTRIAL WELL	NEW CASTLE	NEW CASTLE	0346	LP
AIRPORT ROAD RESTO- RATION SITE	NEW CASTLE	NEW CASTLE	1381	LP
AMERICAN HOECHST CORP	DELAWARE CITY	NEW CASTLE	0068	RA ON-GOING
AMETEK, INC.	WILMINGTON	NEW CASTLE	0176	LP
AMTRAK WILMINGTON RAILYARD	WILMINGTON	NEW CASTLE	0170	FP COMPLETE
APPLIED TECHNOLOGY, INC.	WILMINGTON	NEW CASTLE	0187	LP
BAFUNDO ROOFING	NEW CASTLE	NEW CASTLE	1120	LP
BAYSIDE PFAS	SELYBIVILLE	SUSSEX	1710	RI ON-GOING
BENNETT BAIRD	NEW CASTLE	NEW CASTLE	0308	LP
BOMBAY HOOK NATIONAL REFUGE	DOVER	KENT	0253	LP
BRIDGEVILLE SALVAGE	BRIDGEVILLE	SUSSEX	0336	LP
BROADKILN SPORTSMAN CLUB	MILTON	SUSSEX	1371	RI ON-GOING
CADMUS LANDFILL	SMYRNA	KENT	0096	LP
CAMDEL METALS	CAMDEN	KENT	0115	LP
CAPITAL CLEANERS	DOVER	KENT	1018	LP
CASPER AUTOPARTS	WILMINGTON	NEW CASTLE	1185	LP
CASSIDY PAINTING SITE	NEW CASTLE	NEW CASTLE	1218	LP
CHRISTINA RIVER BRIDGE	WILMINGTON	NEW CASTLE	0334	RA COMPLETE
CHROME DEPOSIT	NEWARK	NEW CASTLE	0322	LP
CHURCHMANS MARSH	NEWPORT	NEW CASTLE	1065	LP

**ATTACHMENT B (CONTINUED):
SITE REPORTING TABLES BY PHASE/STATUS**

Table 2

**HSCA Active Sites & Projected Status
as of Fiscal Year Ending 2022**

SITE NAME	TOWN	COUNTY	DE SITE ID #	PROJECTED STATUS OF REMEDIATION
CITY OF HARRINGTON DUMP	HARRINGTON	KENT	0330	LP
CLAYTON LANDFILL	CLAYTON	KENT	0069	LP
COKER SAND PIT	DOVER	KENT	0102	FACILITY EVALUA- TION (FE) COMPLETE
COMMERCE STREET	WILMINGTON	NEW CASTLE	1072	LP
COMPTON TOWNHOUSE	WILMINGTON	NEW CASTLE	1233	RA ON-GOING
CONECTIV HAY ROAD SITE	WILMINGTON	NEW CASTLE	1265	LP
CRESS COLLISION SER- VICES, INC.	NEW CASTLE	NEW CASTLE	0282	LP
D. BUNTING FILL AREA	SELBYVILLE	SUSSEX	0238	LP
DASSAULT AIRCRAFT SERVICES	NEW CASTLE	NEW CASTLE	0350	LP
DELACOTE/EASTWIND	CLAYTON	KENT	0290	LP
DE CITY GROUNDWATER	DELAWARE CITY	NEW CASTLE	1648	RI ON-GOING
DELSTATE COLLEGE DUMP	DOVER	KENT	0164	LP
DELAWARE WOOD PRE- SERVING CO.	NEW CASTLE	NEW CASTLE	0116	LP
DIAMOND STATE FOUND- RY	WILMINGTON	NEW CASTLE	1144	LP
DONOVAN ROADS PLUME	GEORGETOWN	SUSSEX	1743	RI ON-GOING
DOVER SURVIVAL TRAIN- ING ANNEX	DOVER	KENT	1008	LP
DOVER WEST B COCA CO- LA	DOVER	KENT	1240	LP
DOVER WEST SIDE B	DOVER	KENT	1213	LP
DRAKE AUTO SALVAGE	TOWNSEND	NEW CASTLE	1316	LP
DSFS DOVER STUDY	DOVER	KENT	1718	RI ON-GOING
DUCK CREEK POND DUMP, CLAYTON	CLAYTON	KENT	0080	LP
EAST 7 TH STREET PENIN- SULA NORTH	WILMINGTON	NEW CASTLE	1128	LP
EAST 7 TH STREET PENIN- SULA SOUTH	WILMINGTON	NEW CASTLE	1127	LP
ELBERT PARK	WILMINGTON	NEW CASTLE	1327	LP

**ATTACHMENT B (CONTINUED):
SITE REPORTING TABLES BY PHASE/STATUS**

Table 2

**HSCA Active Sites & Projected Status
as of Fiscal Year Ending 2022**

SITE NAME	TOWN	COUNTY	DE SITE ID #	PROJECTED STATUS OF REMEDIATION
FIBRE PROCESSING	WILMINGTON	NEW CASTLE	0032	LP
FITZGERALD AUTO SAL- VAGE	MILFORD	SUSSEX	1315	LP
FORK BRANCH SCHOOL	DOVER	KENT	1676	RA ON-GOING
FORT DUPONT MARINA SPOILS	DELAWARE CITY	NEW CASTLE	1618	FP COMPLETE
GEORGE GRAY SCHOOL	WILMINGTON	NEW CASTLE	1138	RA COMPLETE
GEORGETOWN CLEAN- ERS	GEORGETOWN	SUSSEX	0113	FE COMPLETE
GEORGETOWN DUMP FORMERLY	GEORGETOWN	SUSSEX	1719	FE COMPLETE
GOVERNOR PRINTZ GOODYEAR	WILMINGTON	NEW CASTLE	0348	LP
GOVERNOR PRINTZ IN- DUSTRIAL PARK	WILMINGTON	NEW CASTLE	1025	LP
GREENE DUMP	LAUREL	SUSSEX	0183	LP
GREENHILL GROUNDWA- TER	WILMINGTON	NEW CASTLE	1704	RI COMPLETE
HAMILTON PARK/PYLES LANE	WILMINGTON	NEW CASTLE	1284	RA ON-GOING
HOLLINGSWORTH PROP- ERTIES (a)	WILMINGTON	NEW CASTLE	1154	LP
HOMESTEAD CAMPGROUND	GEORGETOWN	SUSSEX	1351	LP
INDIAN RIVER POWER PLANT	MILLSBORO	SUSSEX	0293	LP
JACKSON AVE NORTH DUPONT GW PLUM	NEW CASTLE	NEW CASTLE	1678	RI COMPLETE
JB DRY CLEANERS	WILMINGTON	NEW CASTLE	1280	LP
JUNIOR AUTO PARTS	WILMINGTON	NEW CASTLE	1176	FP COMPLETE
KENTON LANDFILL #2	KENTON	KENT	1037	LP
LAMPLUGH PROPERTY	WILMINGTON	NEW CASTLE	1319	RI COMPLETE
LEBANON ROAD LANDFILL	DOVER	KENT	0132	LP
LIN LERIGH INC	MILTON	SUSSEX	0222	LP
LITTON IND.	SMYRNA	KENT	0110	LP
LOCKE PROPERTY	SEAFORD	SUSSEX	0216	LP
LOWE SITE	LEWES	SUSSEX	0217	LP

**ATTACHMENT B (CONTINUED):
SITE REPORTING TABLES BY PHASE/STATUS**

Table 2

**HSCA Active Sites & Projected Status
as of Fiscal Year Ending 2022**

SITE NAME	TOWN	COUNTY	DE SITE ID #	PROJECTED STATUS OF REMEDIATION
MAYS BODY SHOP	DOVER	KENT	0273	LP
METCALF PIT	LEWES	SUSSEX	0150	LP
MIDDLETOWN SEWER PLANT DUMP	MIDDLETOWN	NEW CASTLE	0213	LP
MILFORD MOSQUITO CON- TROL SHOP	MILFORD	SUSSEX	1156	RA ON-GOING
MILL STREET DUMP	SMYRNA	KENT	0128	LP
MILLBRANCH DEVELOP- MENT	MIDDLETOWN	NEW CASTLE	1269	LP
MILLSBORO DUMP SITE	MILLSBORO	SUSSEX	1056	LP
MILLVILLE DUMP	MILLVILLE	SUSSEX	1363	LP
MILTON MAINTENANCE YARD	MILTON	SUSSEX	0255	LP
MOTIVA	DELAWARE CITY	NEW CASTLE	0058	LP
MOTIVA NRDA HABITAT	DELAWARE CITY	NEW CASTLE	1373	LP
MT. PLEASANT RAILROAD DUMP	MT PLEASANT	NEW CASTLE	0079	LP
NESCASTRO AUTO SAL- VAGE	NEW CASTLE	NEW CASTLE	0283	LP
NEW STREET	DOVER	KENT	1107	LP
NEWARK CONCRETE COMPANY	NEWARK	NEW CASTLE	0035	LP
NEWPORT CITY LANDFILL	NEWPORT	NEW CASTLE	0044	LP
NEWPORT MARSH	NEWPORT	NEW CASTLE	1242	LP
NORFOLK SOUTHERN	WILMINGTON	WILMINGTON	1432	LP
NORTH STREET PLUME	DOVER	KENT	1522	RI ON-GOING
NRDA DE ESTUARY WA-	NEW CASTLE	NEW CASTLE	1302	LP
NRDA HALBY	WILMINGTON	NEW CASTLE	1191	LP
NRDA KOPPERS	NEWPORT	NEW CASTLE	1352	RA ON-GOING
NRDA NEW CASTLE AREA	NEW CASTLE	NEW CASTLE	1353	LP
NVF YORKLYN	YORKLYN	NEW CASTLE	0071	RA ON-GOING
OBRIEN PROPERTIES	WILMINGTON	NEW CASTLE	1106	LP
OLD AIRPORT SALVAGE	NEW CASTLE	NEW CASTLE	0356	LP
OMMELANDEN HUNTER	NEW CASTLE	NEW CASTLE	1457	FE COMPLETE
ONEAL FARM	SEAFORD	SUSSEX	1030	LP
OWENS STATION	GREENWOOD	SUSSEX	1350	LP
P&F MOTORCYCLES	DOVER	KENT	1093	LP

**ATTACHMENT B (CONTINUED):
SITE REPORTING TABLES BY PHASE/STATUS**

Table 2

**HSCA Active Sites & Projected Status
as of Fiscal Year Ending 2022**

SITE NAME	TOWN	COUNTY	DE SITE ID #	PROJECTED STATUS OF REMEDIATION
PARRKLYNN DRY CLEAN-ERS	WILMINGTON	NEW CASTLE	0343	FE ON-GOING
PEARSONS CORNER	DOVER	KENT	1411	FP COMPLETE
PORTER CHEVROLET	NEWARK	NEW CASTLE	0120	LP
PRIME HOOK LEAD SITE	MILTON	SUSSEX	0306	LP
PRIME HOOK REFUGE LEAD REMOVAL	MILTON	SUSSEX	1192	LP
PURINA TOWER B	WILMINGTON	NEW CASTLE	1264	LP
PUSEY & JONES SHIP- YARD	WILMINGTON	NEW CASTLE	1051	LP
RACE STREET SITE	WILMINGTON	NEW CASTLE	1691	RI COMPLETE
RIVERHOUSE II	WILMINGTON	NEW CASTLE	1698	RI ON-GOING
ROGERS CORNER DUMP	WILMINGTON	NEW CASTLE	0246	LP
ROYAL DRY CLEANERS	WILMINGTON	NEW CASTLE	1435	RI COMPLETE
S&W CONSERVATION (DOXSEE)	LEWES	SUSSEX	1295	LP
SALEM CHURCH	NEWARK	NEW CASTLE	0193	LP
SALVAGE YARD RELOCA- TION AREA I	WILMINGTON	NEW CASTLE	1165	LP
SALVAGE YARD RELOCA- TION AREA II	WILMINGTON	NEW CASTLE	1166	LP
SALVATION ARMY- WILMINGTON	WILMINGTON	NEW CASTLE	1370	LP
SCHMALBACH PUM- PHOUSE	NEW CASTLE	NEW CASTLE	1297	LP
SEABOARD LUMBER	BRIDGEVILLE	SUSSEX	0251	RA ON-GOING
SEARS DISTRIBUTION CENTER FORMER	NEWPORT	NEW CASTLE	1445	LP
SELBYVILLE DUMP	SELBYVILLE	SUSSEX	0137	LP
SHORTLY ROAD EQUIP- MENT YARD	GEORGETOWN	SUSSEX	1529	LP
SIMPSON LUMBER COM- PANY DUMP	DOVER	KENT	0147	LP
SOLVAY SPECIALTY POLYMERS	WILMINGTON	NEW CASTLE	1735	RI ON-GOING
SOUTH WILMINGTON WETLANDS	WILMINGTON	NEW CASTLE	1447	RI ON-GOING

**ATTACHMENT B (CONTINUED):
SITE REPORTING TABLES BY PHASE/STATUS**

Table 2

**HSCA Active Sites & Projected Status
as of Fiscal Year Ending 2022**

SITE NAME	TOWN	COUNTY	DE SITE ID #	PROJECTED STATUS OF REMEDIATION
SPATZ FIBERGLASS	YORKLYN	NEW CASTLE	0166	LP
SUNG CLEANERS FORMER	WILMINGTON	NEW CASTLE	0367	LP
SUSSEX COUNTY AIR-PORT	GEORGETOWN	SUSSEX	0223	LP
SYNTECH	NEWARK	NEW CASTLE	0173	RA ON-GOING
TEAL CONSTRUCTION CO. LANDFILL	DOVER	KENT	0133	LP
TEXACO IN-C. CLAYMONT TERM	CLAYMONT	NEW CASTLE	0050	LP
THOMPSON CLEANERS	HOCKESSIN	NEW CASTLE	1590	FE COMPLETE
TISDEL PROPERTY	NEW CASTLE	NEW CASTLE	0064	LP
TONI DRY CLEANERS	ELSMERE	NEW CASTLE	1005	RA ON-GOING
TRAILS & PATHWAYS BRANDYWINE ZOO	WILMINGTON	NEW CASTLE	1549	LP
TRAILS & PATHWAYS CHRISITINA PEDESTRIAN BRIDGE	WILMINGTON	NEW CASTLE	1560	RA ON-GOING
TRI-STATE E. 7 TH STREET PENINSULA	WILMINGTON	NEW CASTLE	1216	LP
TRUITT DUMP	SEAFORD	SUSSEX	0178	LP
USN NAVAL FACILITY LEWES	LEWES	SUSSEX	0172	LP
VOLPA PROPERTY	WILMINGTON	NEW CASTLE	1257	LP
W.B. CLERK CO.	WILMINGTON	NEW CASTLE	1234	LP
WHITE'S CLEANERS	NEW CASTLE	NEW CASTLE	0352	LP
WHITE OAK SALVAGE	DOVER	KENT	0358	LP
WHITTINGTON SAND & GRAVEL	CHRISTIANA	NEW CASTLE	0082	LP
WILMINGTON CHEMICAL	NEW CASTLE	NEW CASTLE	1058	LP
WILMINGTON INCENERATOR	WILMINGTON	NEW CASTLE	1273	LP
WILMINGTON SKATE PARK	WILMINGTON	NEW CASTLE	1262	LP
WILSON STREET WEST	WILMINGTON	NEW CASTLE	1398	LP
WYOMING DUMP	WYOMING	KENT	0276	LP

**ATTACHMENT B (CONTINUED):
SITE REPORTING TABLES BY PHASE/STATUS**

Table 3

**Brownfield Development Program Active Sites & Projected Status
as of Fiscal Year Ending 2022**

SITE NAME	TOWN	COUNTY	DE SITE ID #	PROJECTED STATUS OF REMEDIATION
0 OLD AIRPORT ROAD	NEW CASTLE	NEW CASTLE	1801	RI ON-GOING
1 FORGE DRIVE	NEWARK	NEW CASTLE	1730	RA ON-GOING
3 JAMES COURT	WILMINGTON	NEW CASTLE	1733	FP COMPLETE
12 & 14 GORDON STREET	WILMINGTON	NEW CASTLE	1697	RA ON-GOING
35 COMMERCE STREET	WILMINGTON	NEW CASTLE	1734	FP COMPLETE
38 BANCROFT ROAD	WILMINGTON	NEW CASTLE	1758	RI ON-GOING
201 GOLD PROPERTY	WILMINGTON	NEW CASTLE	0323	ON HOLD
222 MARYLAND AVE	WILMINGTON	NEW CASTLE	1453	FP COMPLETE
250 N REHOBOTH ROAD	REHOBOTH BEACH	SUSSEX	1749	RI ON-GOING
307 RIDGE ROAD CLAY- MONT	CLAYMONT	NEW CASTLE	1580	FP COMPLETE
501 EAST FRONT STREET	WILMINGTON	NEW CASTLE	1693	ON HOLD
502 S WALNUT STREET	WILMINGTON	NEW CASTLE	1722	RI ON-GOING
512 S CLAYMONT STREET	WILMINGTON	NEW CASTLE	0326	ON HOLD
516 NORTH KING STREET & ALICO ROAD	WILMINGTON	NEW CASTLE	0371	RI COMPLETE
518 SOUTH HEALD STREET	WILMINGTON	NEW CASTLE	1688	RA ON-GOING
532-540 OLD BARKSDALE ROAD	WILMINGTON	NEW CASTLE	1747	RI ON-GOING
560 TERMINAL AVE	WILMINGTON	NEW CASTLE	1123	RA ON-GOING
601 DELAWARE AVE	WILMINGTON	NEW CASTLE	1779	RI ON-GOING
601 JUSTISON STREET	WILMINGTON	NEW CASTLE	1729	FP COMPLETE
609 PHILADELPHIA PIKE	WILMINGTON	NEW CASTLE	1795	RI ON-GOING
615-617 N KING STREET	WILMINGTON	NEW CASTLE	1803	RI ON-GOING
700 A STREET	WILMINGTON	NEW CASTLE	1340	ON HOLD
701 ANCHORAGR STREET	WILMINGTON	NEW CASTLE	1752	RI ON-GOING
707 S UNION STREET	WILMINGTON	NEW CASTLE	1740	RI ON-GOING
726 A STREET	WILMINGTON	NEW CASTLE	1606	RA ON-GOING
733 S MARKET STREET	WILMINGTON	NEW CASTLE	1502	ON HOLD
801 N ORANGE STREET	WILMINGTON	NEW CASTLE	1802	RI ON-GOING
810 JUSTISON STREET	WILMINGTON	NEW CASTLE	1589	ON HOLD
900 A STREET	WILMINGTON	NEW CASTLE	1346	RI ON-GOING
900 N BROAD STREET	MIDLETOWN	NEW CASTLE	1781	RI ON-GOING
900 S HEALD STREET	WILMINGTON	NEW CASTLE	1760	RI ON-GOING
901 EAST 17TH STREET	WILMINGTON	NEW CASTLE	1505	ON HOLD
1000 EAST 12 TH STREET	WILMINGTON	NEW CASTLE	1404	ON HOLD
1000 EAST LAWN STREET	WILMINGTON	NEW CASTLE	1739	RI ON GOING
1190 EAST 7 TH STREET	WILMINGTON	NEW CASTLE	1410	ON HOLD
1039-1043 CLIFFORD BROWN WALK	WILMINGTON	NEW CASTLE	1690	FP COMPLETE

**ATTACHMENT B (CONTINUED):
SITE REPORTING TABLES BY PHASE/STATUS**

Table 3

**Brownfield Development Program Active Sites & Projected Status
as of Fiscal Year Ending 2022**

SITE NAME	TOWN	COUNTY	DE SITE ID #	PROJECTED STATUS OF REMEDIATION
1145 SAVANNAH ROAD	LEWES	SUSSEX	1751	RI ON-GOING
1175 EAST 7TH STREET	WILMINGTON	NEW CASTLE	1775	RI ON-GOING
1320 EAST 8TH STREET	WILMINGTON	NEW CASTLE	1689	ON HOLD
1400 S DUPONT HIGHWAY	WILMINGTON	NEW CASTLE	1796	RI ON-GOING
16519 S DUPONT HIGHWAY	HARRINGTON	KENT	1768	RI ON-GOING
17399, 17403, 17439 S DUPONT HIGHWAY	HARRINGTON	KENT	1791	RI ON-GOING
2301 N MARKET STREET	WILMINGTON	NEW CASTLE	1721	FP COMPLETE
2603 KIRKWOOD HIGHWAY ASTRO CENTER	NEWARK	NEW CASTLE	1727	RI COMPLETE
3203 MILLER ROAD	WILMINGTON	NEW CASTLE	1569	RI ON-GOING
3604 DOWNING DRIVE	WILMINGTON	NEW CASTLE	1670	RA ON-GOING
3700 N MARKET STREET	WILMINGTON	NEW CASTLE	1726	RI ON-GOING
4845 & 4867 DUPONT PARKWAY	TOWNSEND	NEW CASTLE	1777	RI ON-GOING
4928 & 4929 NORTH DUPONT HIGHWAY	DOVER	KENT	1627	ON HOLD
ALPHA SHPPES	WILMINGTON	NEW CASTLE	1763	FP COMPLETE
AM DOMINO JR SALVAGE CO	WILMINGTON	NEW CASTLE	1173	FP COMPLETE
AMERICAN TANK TRAILER CLEANING CO	WILMINGTON	NEW CASTLE	1180	RA ON-GOING
ATLAS SANITATION	WILMINGTON	NEW CASTLE	0280	ON HOLD
B STREET PACK & PRO- CESS	WILMINGTON	NEW CASTLE	1442	RA ON-GOING
BAST PARKING LOT	GEORGETO	SUSSEX	1490	ON HOLD
CARNEY MACHINE STORE	WILMINGTON	NEW CASTLE	1669	RA ON-GOING
CHEM SOLV REDEVELOP- MENT	CHESWOLD	KENT	1427	ON HOLD
CHRISTINA RIVER BRIDGE	WILMINGTON	NEW CASTLE	0334	RI ON-GOING
CHRISTINA RIVERFRONT HOTEL	WILMINGTON	NEW CASTLE	1679	RA COMPLETE
CUMERLAND FARMS, 1700 MARSH ROAD	WILMINGTON	NEW CASTLE	1738	RI ON-GOING
DELAWARE CIVIC CENTER	DOVER	KENT	1438	ON HOLD
DELMAR NEWS FORMER	WILMINGTON	NEW CASTLE	1615	ON HOLD
DIAMOND STATE SALVAGE	WILMINGTON	NEW CASTLE	0281	RI COMPLETE
DOVER MACHINE WORKS	DOVER	KENT	1314	ON HOLD
DOVER PRODUCTS FOR- MER	DOVER	KENT	1617	RA COMPLETE
DTC 2ND & WALNUT STREET	WILMINGTON	NEW CASTLE	1663	RA COMPLETE
ELECTRIC RUBBER & HOSE	WILMINGTON	NEW CASTLE	0174	RA ON-GOING
ENNIS DUMP	SMYRNA	KENT	0127	ON HOLD

**ATTACHMENT B (CONTINUED):
SITE REPORTING TABLES BY PHASE/STATUS**

Table 3

**Brownfield Development Program Active Sites & Projected Status
as of Fiscal Year Ending 2022**

SITE NAME	TOWN	COUNTY	DE SITE ID #	PROJECTED STATUS OF REMEDIATION
FAS MART #259 FORMER	GEORGTOWN	SUSSEX	1586	ON HOLD
FIRST STATE CROSSING	CLAYMONT	NEW CASTLE	1644	ON HOLD
GLASGOW-CITGO NEWARK	NEWARK	NEW CASTLE	1699	FP COMPLETE
HEALD STREET CONCRETE PLANT	WILMINGTON	NEW CASTLE	1405	ON HOLD
HESSLER PROPERTY	WILMINGTON	NEW CASTLE	1203/11 69	RA ON-GOING
INTERSTATE BRANDS CORP	WILMINGTON	NEW CASTLE	1774	RI ON-GOING
ISAACS, INC	WILMINGTON	NEW CASTLE	1788	RI ON-GOING
JABLOW PROPERTY	WILMINGTON	NEW CASTLE	1329	ON HOLD
JACKSON AVE WILMING- TON UNIVERSITY	NEW CASTLE	NEW CASTLE	1706	RI COMPLETE
JOY CLEANERS	WILMINGTON	NEW CASTLE	1800	RI ON-GOING
JUSTISON LANDING PARCEL 1A	WILMINGTON	NEW CASTLE	1674	RI COMPLETE
KAISER YACHT PROPERTY	WILMINGTON	NEW CASTLE	1563	RI ON-GOING
KERSHAW CONSTRUCTION	NEW CASTLE	NEW CASTLE	1420	ON HOLD
LACC COMMUNITY GAR- DEN	WILMINGTON	NEW CASTLE	1575	ON HOLD
MARTIN AUTOMOTIVE	NEW CASTLE	NEW CASTLE	1708	FP COMPLETE
MILFORD FERTILIZER FORMER	MIDDLETOWN	NEW CASTLE	1412	RI ON-GOING
MILFORD SALVAGE	MILFORD	SUSSEX	0335	RI COMPLETE
NANTICOKE CLEANERS	BLADES	SUSSEX	1685	RI COMPLETE
NEW CASTLE AVE AND B STREET	WILMINGTON	NEW CASTLE	1396	ON HOLD
NEWTOWN ROAD	NEWARK	NEW CASTLE	1650	RI COMPLETE
NORTH HILLS DRYCLEANER	WILMINGTON	NEW CASTLE	1793	RI ON-GOING
NVF WILMINGTON	WILMINGTON	NEW CASTLE	1374	FP COMPLETE
OPEN SPACE	WILMINGTON	NEW CASTLE	156	RI ON-GOING
OYSTER HOUSE VILLAGE	REHOBOTH	SUSSEX	1573	RA ON-GOING
PARCEL A	WILMINGTON	NEW CASTLE	1769	RI ON-GOING
PARCEL C	WILMINGTON	NEW CASTLE	1771	RI ON-GOING
PARCEL D	WILMINGTON	NEW CASTLE	1770	RI ON-GOING
PARCEL E	WILMINGTON	NEW CASTLE	1754	RI ON-GOING
PARCEL G	WILMINGTON	NEW CASTLE	1755	RI ON-GOING

**ATTACHMENT B (CONTINUED):
SITE REPORTING TABLES BY PHASE/STATUS**

Table 3

**Brownfield Development Program Active Sites & Projected Status
as of Fiscal Year Ending 2022**

SITE NAME	TOWN	COUNTY	DE SITE ID #	PROJECTED STATUS OF REMEDIATION
PARCEL H	WILMINGTON	NEW CASTLE	1742	RI ON-GOING
PARCEL J	WILMINGTON	NEW CASTLE	1764	RI ON-GOING
PENNY HILL MOBILE FOR-	CLAYMONT	NEW CASTLE	1596	ON HOLD
PURINA TOWER A	WILMINGTON	NEW CASTLE	1263	ON HOLD
R&S STRAUSS FORMER	WILMINGTON	NEW CASTLE	1358	ON HOLD
RIVERSIDE REDEVELOP-	WILMINGTON	NEW CASTLE	1498	ON HOLD
RIVERHOUSE I	WILMINGTON	NEW CASTLE	1696	RA ON-GOING
RIVERWALK PHASE I	WILMINGTON	NEW CASTLE	1731	RI ON-GOING
ROADS PHASE I	WILMINGTON	NEW CASTLE	1732	RI ON-GOING
RUSSELL STANLEY FACILI-	WILMINGTON	NEW CASTLE	1300 /	ON HOLD
SEAFORD POWER PLANT	SEAFORD	SUSSEX	1031	RA ON-GOING
SIP PROPERTY	WILMINGTON	NEW CASTLE	1408	RI COMPLETE
SIXTEENTH STREET QUAR-	WILMINGTON	NEW CASTLE	0097	FP COMPLETE
SSC LAUREL AGRONOMY	LAUREL	SUSSEX	1790	RI ON-GOING
STONELAKE PROPERTIES	DOVER	KENT	1765	RI ON-GOING
SUPER SODA CENTER HARRINGTON FROMER	HARRINGTON	KENT	1585	ON HOLD
SUSSEX COUNTY COURTHOUSE	GEORGETOWN	SUSSEX	1776	FP COMPLETE
TAYLOR LANDFILL	NEWARK	NEW CASTLE	0089	RI COMPLETE
TB ACRES	WYOMING	KENT	1745	RI ON-GOING
THREE J'S FORMER	WILMINGTON	NEW CASTLE	1784	RI ON-GOING
THOMPSON GAS STATION	LAUREL	SUSSEX	1472	RA COMPLETE
THORO-KLEEN DRY CLEANING & LAUNDRY	GEORGETOWN	SUSSEX	0207	RA ON-GOING
TIEMAN PROPERTY	DOVER	SUSSEX	1550	ON HOLD
TIMKO BROTHERS LAND-	NEWPORT	NEW CASTLE	0055	FP COMPLETE
UNIQEMA/CHERRY UTILITY	NEW CASTLE	NEW CASTLE	1638	ON HOLD
VILLA MARIA PROJECT	WILMINGTON	NEW CASTLE	1728	FP COMPLETE
WEST 4TH STREET &	WILMINGTON	NEW CASTLE	1682	RA COMPLETE
WILMINGTON PIECE DYE	WILMINGTON	NEW CASTLE	1304	RA COMPLETE
WILSON BAKER BULK PLANT FORMER	GEORGETOWN	SUSSEX	1417	ON HOLD
YORKLYN REDEVELOP- MENT	YORKLYN	NEW CASTLE	1461	ON HOLD

**ATTACHMENT B (CONTINUED):
SITE REPORTING TABLES BY PHASE/STATUS**

Table 4

**Voluntary Cleanup Program Active Sites & Projected Status
as of Fiscal Year Ending 2021**

SITE NAME	TOWN	COUNTY	DE SITE ID #	PROJECTED STATUS OF REMEDIATION
100 WALNUT STREET	WILMINGTON	NEW CASTLE	1114	RA ON-GOING
201-213 N TATNALL STREET	WILMINGTON	NEW CASTLE	1645	FP COMPLETE
211 EAST STREET	HARRINGTON	KENT	1403	LP
355 SUMMIT POINT CIRCLE	BEAR	NEW CASTLE	1633	LP
401-425 NEW LONDON ROAD	NEWARK	NEW CASTLE	1680	RI ON-GOING
427 WEST 7TH STREET	NEW CASTLE	NEW CASTLE	1574	FP COMPLETE
459 OLD AIRPORT ROAD	NEW CASTLE	NEW CASTLE	1624	RI COMPLETE
517 SHIPLEY STREET	WILMINGTON	NEW CASTLE	1705	RI ON-GOING
626 GARASCHE'S LANE	WILMINGTON	NEW CASTLE	0362	RI ON-GOING
1201 NORTHEAST BOULEVARD	WILMINGTON	NEW CASTLE	0313	RI ON-GOING
2925 NORTHEAST BOULE- VARD	WILMINGTON	NEW CASTLE	1413	LP
A STREET DELDOT	WILMINGTON	NEW CASTLE	1308	LP
AMTRAK BEAR YARD	BEAR	NEW CASTLE	1639	RI ON-GOING
AMTRAK WILMINGTON REFU- ELING FACILITY	WILMINGTON	NEW CASTLE	0266	FP COMPLETE
AMTRAK WILMINGTON TRAIN YARD	WILMINGTON	NEW CASTLE	0159	RI ON-GOING
ASTRA ZENECA NORTH CAM- PUS	WILMINGTON	NEW CASTLE	1662	FP COMPLETE
BOA LOT DEW-123	WILMINGTON	NEW CASTLE	1672	RI COMPLETE
BOA LOT DEW-122	WILMINGTON	NEW CASTLE	1673	RI COMPLETE
BRANDYWINE COUNTRY CLUB	WILMINGTON	NEW CASTLE	1631	RI COMPLETE
CANNON SALVAGE	HARTLY	KENT	0340	FP COMPLETE
CAVALIERS COUNTRY CLUB	NEWARK	NEW CASTLE	1600	RA ON-GOING
CITISTEEL A	WILMINGTON	NEW CASTLE	0046	RA COMPLETE
CITY OF DOVER PUBLIC WORKS	DOVER	KENT	0152	FE ON-GOING
CLAYVILLE DUMP	CHRISTIANA	NEW CASTLE	0095	LP
DAISEY STREET & RAILROAD AVE	FRANKFORD	SUSSEX	1716	RI ON-GOING
DONOVAN SALVAGE	TOWNSEND	NEW CASTLE	0338	RI ON-GOING
DOVER POWER PLANT	DOVER	KENT	0269	RI COMPLETE
DRY CLEAN CENTRAL OFFSITE CONTAMINATION	DOVER	KENT	1694	RI ON-GOING
DUPONT LOUVIERS - MBNA	NEWARK	NEW CASTLE	1049	RI COMPLETE
EAGLE RUN	WILMINGTON	NEW CASTLE	1039	LP
EDEN HILL FARM	DOVER	KENT	1714	RI ON-GOING
ELECTRIC HOSE & RUBBER RECON	WILMINGTON	NEW CASTLE	0174	FP COMPLETE

**ATTACHMENT B (CONTINUED):
SITE REPORTING TABLES BY PHASE/STATUS**

Table 4

**Voluntary Cleanup Program Active Sites & Projected Status
as of Fiscal Year Ending 2021**

SITE NAME	TOWN	COUNTY	DE SITE ID #	PROJECTED STATUS OF REMEDIATION
EMULSION PRODUCTS	SEAFORD	SUSSEX	0139	LP
ESTATE OF WILLIAM C WARD	WILMINGTON	NEW CASTLE	1272	RI ON-GOING
FISHER ROAD/MONARCH GLEN	MILTON	SUSSEX	1757	RI ON-GOING
FOUNDRY AT REARVIEW	WILMINGTON	NEW CASTLE	1737	RI ON-GOING
FREAR PROPERTY	CAMDEN- WYOMING	KENT	1559	LP
GEORGETOWN TO LEWES TRAIL PHASE 8	GEORGETOW N	SUSSEX	1709	RI ON-GOING
GLASGOW FARM SITE	NEWARK	NEW CASTLE	1122	RI COMPLETE
HIGHAM'S CLEANERS	WILMINGTON	NEW CASTLE	1609	RI ON-GOING
HOCKESSIN CLEANERS	HOCKESSIN	NEW CASTLE	1591	RI ON-GOING
MERK SITE S113A	MILSBORO	SUSSEX	1646	FE COMPLETE
MIDDLETOWN LANDFILL	MIDDLETOWN	NEW CASTLE	0196	RI ON-GOING
NEW ARC WELDING FORMER	WILMINGTON	NEW CASTLE	1345	RI ON-GOING
NEW CASTLE COUNTY AIR- PORT	NEW CASTLE	NEW CASTLE	0357	RI ON-GOING
OBRIEN ENERGY SERVICES COMPANY	WILMINGTON	NEW CASTLE	1137	RA COMPLETE
PENN FIBRE FACILITY	NEW CASTLE	NEW CASTLE	1045	LP
PORT OF WILMINGTON	WILMINGTON	NEW CASTLE	1630	RI ON-GOING
RAIL TO TRAILS COOL SPRING TO FISHER	MILTON	SUSSEX	1746	FE ON-GOING
RIVERWALK @ DEEMERS BEACH	NEW CASTLE	NEW CASTLE	1324	RI COMPLETE
SCHOONER LANDING	SELBYVILLE	SUSSEX	1746	RI ON-GOING
SEAFORD TOWN GAS	SEAFORD	SUSSEX	0061	RA ON-GOING
SEEDS OF GREATNESS CHURCH	NEW CASTLE	NEW CASTLE	1474	LP
SHELLHORN & HILL	WILMINGTON	NEW CASTLE	1516	RI ON-GOING
SITE 113A	MILLSBORO	SUSSEX	1652	RI ON-GOING
SUNRISE CLEANERS	HOCKESSIN	NEW CASTLE	1532	RI ON-GOING
TRAILS & PATHWAYS GEORGETOWN/LEWES PHASE II	LEWES	SUSSEX	1668	FE COMPLETE
TRI-COUNTY MATERIALS, LLC.	DOVER	KENT	1635	LP
TWO GUYS AUTO PARTS	WILMINGTON	NEW CASTLE	1177	FP COMPLETE
WHITTINGTON WOODS	NEW CASTLE	NEW CASTLE	1509	PP COMPLETE

**ATTACHMENT B (CONTINUED):
SITE REPORTING TABLES BY PHASE/STATUS**

Table 5

HSCA-Federally Participating Sites

As of Fiscal Year, Ending 2022

(Includes NPL/U.S. EPA Lead, DOD Formerly Used Defense Sites, Pre-Remedial Site Assessment/Preliminary Assessment Grants and Subtitle C Grants for Petroleum and Non-Petroleum Sites)

SITE NAME	TOWN	COUNTY	DE SITE ID #	PROJECTED STATUS OF REMEDIATION
NATIONAL PRIORITIES LIST (NPL) SITES: (NPL) SITES:				
BLADES GROUNDWATER	BLADES	SUSSEX	1675	RI ON-GOING
DELAWARE CITY PVC PLANT	DELAWARE CITY	NEW CASTLE	0007	GROUNDWATER MONITORING
DOVER AIR FORCE BASE	DOVER	KENT	0031	REMEDIAL DESIGN (RD) COMPLETE
DOVER GAS LIGHT CO.	DOVER	KENT	0057	RA COMPLETE
HOCKESSIN GW	HOCKESSIN	NEW CASTLE	1317	RI ON-GOING
KOPPERS CO. FACILITIES	NEWPORT	NEW CASTLE	0019	RD COMPLETE
MILLSBORO PUBLIC WELL TCE	MILLSBORO	SUSSEX	1361	RA ON-GOING
NCR CORP.	MILLSBORO	SUSSEX	0042	RA ON-GOING
NEWARK SOUTH WELL FIELD	NEWARK	NEW CASTLE	0342	RI ON-GOING
STANDARD CHLORINE	DELAWARE CITY	NEW CASTLE	0053	RD ON-GOING
CURRENT & FORMERLY USED DEPARTMENT OF DEFENSE (FUDS/DOD) SITES:				
ARMY NATIONAL GUARD	NEW CASTLE	NEW CASTLE	0331	RI ON-GOING
DELAWARE AIR NATIONAL GUARD	NEW CASTLE	NEW CASTLE	1003	RA ON-GOING
DELAWARE TARGET AREAS	SUSSEX	SUSSEX	0345	LP
DOVER PRECISION BOMBING RANGE	DOVER	KENT	0302	LP
FORT DELAWARE STATE PARK	DELAWARE CITY	NEW CASTLE	0301	LP
FORT MILES	LEWES	SUSSEX	1119	RI/FS COMPLETE
GOVERNOR BACON HEALTH CENTER	DELAWARE CITY	NEW CASTLE	1007	RI/FS COMPLETE
MILFORD ORDNANCE PLANT	MILFORD	SUSSEX	1311	SI COMPLETE
NEW CASTLE ARMY AIRFIELD	NEW CASTLE	NEW CASTLE	1118	LP
NEWARK MUNITIONS AREA	NEWARK	NEW CASTLE	0259	PA COMPLETE
NG NEW CASTLE TS RIFLE RANGE	NEW CASTLE	NEW CASTLE	0333	PP COMPLETE
PORT PENN ORDINANCE	NEW CASTLE	NEW CASTLE	0304	LP
STOCKLEY TRAINING CENTER	GEORGETOWN	SUSSEX	0351	LP
WILMINGTON NATIONAL GUARD	NEW CASTLE	NEW CASTLE	0332	LP

**ATTACHMENT B (CONTINUED):
SITE REPORTING TABLES BY PHASE/STATUS**

Table 5

HSCA-Federally Participating Sites

As of Fiscal Year, Ending 2022

(Includes NPL/U.S. EPA Lead, DOD Formerly Used Defense Sites, Pre-Remedial Site Assessment/Preliminary Assessment Grants and Subtitle C Grants for Petroleum and Non-Petroleum Sites)

SITE NAME	TOWN	COUNTY	DE SITE ID #	PROJECTED STATUS OF REMEDIATION
PRE-REMEDIAL SITE/PRELIMINARY ASSESSMENT GRANT (PA/SI) SITES:				
0 E BASIN ROAD NEW CASTLE PFOS-PFOA	NEW CASTLE	NEW CASTLE	0363	SI ON-GOING
ANCHOR ENTERPRISES	SEAFORD	SUSSEV	1724	PA ON-GOING
GEORGETOWN GROUNDWATER PLUME	GEORGETOWN	SUSSEX	1717	SI ON-GOING
SUBTITLE C PETROLEUM & NON-PETROLEUM (TBA-P/TBA) SITES:				
8-10 EAST 23 RD STREET	WILMINGTON	NEW CASTLE	1748	RI ON-GOING
522 S MARKET STREET	WILMINGTON	NEW CASTLE	1723	RI ON-GOING
SIP PROPERTY	WILMINGTON	NEW CASTLE	1408	RI ON-GOING

**ATTACHMENT B (CONTINUED):
SITE REPORTING TABLES BY PHASE/STATUS**

**Table 6
State Lead Tank Project Status
as of Fiscal Year Ending 2022**

SITE NAME	TOWN	SITE ID #	STATUS/DETERMINATION
11375 TAYLOR MILL RD	LAUREL	9-000123	ON-GOING CORRECTIVE ACTION (CA)
11429 TAYLOR MILL RD	LAUREL	9-000124	ON-GOING- CA
1228 WINSTEAD ROAD	WILMINGTON	3-002412	COMPLETE- NO FURTHER ACTION (NFA)
1631 COLEMAN STREET	WILMINGTON	3-002621	COMPLETE - NFA
18363 PIN OAK STREET WELL	ELLENDALE	9-000137	ON-GOING- CA
3614 NAAMANS DRIVE	CLAYMONT	3-002610	COMPLETE - NFA
3630 OLD CAPITOLTRAIL	WILMINGTON	3-002168	COMPLETE- NFA
AMOCO (FORMERLY)	NEW CASTLE	3-000370	COMPLETE- NFA
AUBURN HEIGHTS PRESERVE	YORKLYN	3-002503	COMPLETE-NFA
AUTO DOCTORS	TOWNSEND	3-002329	COMPLETE-NFA
B&E SERVICE CENTER	ELLENDALE	5-000989	COMPLETE-NFA
BARNACLE BOB'S	LEWES	5-000901	COMPLETE NFA
BARTLETT PROPERTY	SMYRNA	1-000732	COMPLETE - NFA
BAY TO BEACH BUILDERS	GREENWOOD	5-001003	COMPLETE- NFA
BEAR NECESSITIES	BEAR	3-000686	COMPLETE-NFA
BENTON PROPERTY 1510 FOREST AVE	DOVER	1-000681	COMPLETE - NFA
BERGOLD LANE WELL SAMPLING	DOVER	1-000286	COMPLETE-NFA
BETSY SCOTT RESIDENCE	WILMINGTON	3-002512	COMPLETE - NFA
BILLING'S PROPERTY	FELTON	1-000747	COMPLETE-NFA
BLACKWELL PROPERTY	SEAFORD	9-000142	DEACTIVATED – REFERRED TO DNREC ENV CRIMES UNIT
BLADES BUS SERVICE	FELTON	1-000279	COMPLETE- NFA
BLAKE'S GARAGE	HARRINGTON	1-000136	COMPLETE -NFA
BONNIE MCKENZIE PROPERTY	HARRINGTON	5-001058	COMPLETE – NFA
BONSALL PROPERTY	DELMAR	5-000977	COMPLETE-NFA
BRIDGETT NICHOLSON PROPERTY	BAYARD	5-000972	COMPLETE- NFA
BROMLEY RESIDENCE	DOVER	9-000143	DEACTIVATED
BROOM RESIDENCE	SELBYVILLE	5-001023	COMPLETE-NFA
BROWN PROPERTY	CAMDEN	1-000753	COMPLETE- NFA
BRUCE CAMPBELL RESIDENCE	LEWES	5-001121	COMPLETE – NFA
BULESTAR TEXACO (FORMERLY)	MIDDLETOWN	3-001904	COMPLETE- NFA
CAR CITY AUTO	LITTLE CREEK	5-000648	COMPLETE NFA
CAVALIERS	NEWARK	3-002682	COMPLETE – NFA
CEDAR CREEK BAIT & TACKLE	MILFORD	5-000459	COMPLETE-NFA
CEDER CREEK LAUNCH RAMP	MILFORD	8-000319	COMPLETE – NFA
CHARLES HITCHENS PROPERTY	DOVER	1-000780	COMPLETE-NFA
CHARLES WAGNER PROPERTY	MILLSBORO	5-000849	COMPLETE- NFA
CHILDERS PROPERTY	MILFORD	5-001063	COMPLETE-NFA
CHRISTY TIRE	GEORGETOWN	5-000309	ON-GOING-CA

**ATTACHMENT B (CONTINUED):
SITE REPORTING TABLES BY PHASE/STATUS**

**Table 6
State Lead Tank Project Status
as of Fiscal Year Ending 2022**

SITE NAME	TOWN	SITE ID #	STATUS/DETERMINATION
CHURCHILL RESIDENCE	WILMINGTON	3-002427	COMPLETE- NFA
CITY OF MILFORD PARK	MILFORD	9-000159	DEACTIVATED
CLAY SCOTT RESIDENCE	WILMINGTON	3-002531	COMPLETE-NFA
COCHRAN RESIDENCE	MIDDLETOWN	3-002091	COMPLETE- NFA
COMMUNITY PLAZA	NEW CASTLE	9-000172	ON-GOING -CA
CONWAY RESIDENCE	WILMINGTON	3-002462	COMPLETE-NFA
CORNISH RESIDENCE	NEWARK	3-002336	COMPLETE-NFA
COUNTRY STORE AND GAS	OCEAN VIEW	5-000145	COMPLETE-NFA
DAVE'S AUTO BODY	LEWES	5-000970	COMPLETE- NFA
DE ELECTRIC SIGNAL COMPANY	DOVER	1-000718	COMPLETE- NFA
DE EYE CARE CENTER	DOVER	1-000762	COMPLETE-NFA
DEAN STOTLER RESIDENCE	TOWNSEND	3-002878	COMPLETE – NFA
DELDOT ROUTE 26 ROW	MILLVILLE	5-001152	COMPLETE – NFA
DELDOT ROW	MILLVILLE	5-001114	COMPLETE-NFA
DELDOT YORKLYN ROAD	HOCKESSIN	3-002493	COMPLETE –NFA
DIEHL RESIDENCE	DOVER	1-000758	COMPLETE-NFA
DILLON'S PROPERTY (FORMERLY)	DAGSBORO	5-000780	COMPLETE-NFA
DONALD EASTMAN RESIDENCE	WILMINGTON	3-002601	COMPLETE-NFA
DOVER PIZZA HUT	DOVER	9-000133	ON-GOING- CA
DUKE STREET PROPERTY	SELBYVILLE	5-001011	COMPLETE-NFA
DUNKIN DONUTS	SEAFORD	5-000171	COMPLETE-NFA
E V ADKINS OIL COMPANY	LEWES	5-000730	COMPLETE-NFA
E.C. TOWING	WILMINGTON	3-000006	COMPLETE-NFA
EARL'S MINI MART	SMYRNA	1-000113	COMPLETE-NFA
EARNESTINE SANDERS	DOVER	1-000796	COMPLETE-NFA
ELIZABETH SWAINE RESIDENCE	REHOBOTH	5-001090	COMPLETE – NFA
ELLENDALE MARKET	ELLENDALE	5-000103	ON-GOING- CA
EMERSON PROPERTY	BRIDGEVILLE	5-001005	COMPLETE- NFA
ENOS PROPERTY	NEWARK	3-002343	COMPLETE-NFA
ESENDER PROPERTY	FRANKFORD	5-000974	COMPLETE- NFA
ESTATE OF GRACE MINNER	HARRINGTON	1-000793	COMPLETE – NFA
ESTATE OF RUTH FEFEL	MILLVILLE	5-001083	COMPLETE – NFA
EVANS RESIDENCE	CLAYTON	9-000115	COMPLETE-NFA
EVERETT RUST SERVICE	MILLSBORO	5-000931	COMPLETE – NFA
FANNON RESIDENCE	NEW CASTLE	7-000624	COMPLETE – NFA
FARIES FUNERAL HOME	DOVER	1-000737	COMPLETE – NFA
FARMER SUPPLY SERVICES, INC.	BRIDGEVILLE	5-000824	COMPLETE- NFA
FLASH MINI MARKET	FREDERICA	1-000140	COMPLETE-NFA
FLEET REFINISHING	MILFORD	1-000547	COMPLETE – NFA
FORAKER RESIDENCE	MIDDLETOWN	9-000065	COMPLETE-NFA

**ATTACHMENT B (CONTINUED):
SITE REPORTING TABLES BY PHASE/STATUS**

**Table 6
State Lead Tank Project Status
as of Fiscal Year Ending 2022**

SITE NAME	TOWN	SITE ID #	STATUS/DETERMINATION
FORMER ARCO/H & R REPAIR – DELDOT ROW	KIRKWOOD	3-001826 (b)	COMPLETE-NFA
FORMER D&D DISMANTLING, INC.	MILFORD	5-001000	COMPLETE- NFA
FORMER MONTANA PROPERTY	WILMINGTON	3-002420	COMPLETE- NFA
FORMER NAUMANN PROPERTY	FELTON	1-000744	COMPLETE- NFA
FRANK CLENDANIEL INC.	LINCOLN	5-000484	COMPLETE NFA
FREEDOM MOTORS	GREENWOOD	5-000447	COMPLETE- NFA
GARRETT SNUFF MILL	YORKLYN	3-003086	COMPLETE - NFA
GESLLE PROPERTY	DOVER	6-000285	COMPLETE-NFA
GLEN RIDDLE GARAGE	MILLSBORO	5-000656	COMPLETE-NFA
GUARDIAN ANGEL DAYCARE	GEORGETOWN	9-000125	COMPLETE-NFA
H&R REPAIR (FORMERLY KIRKWOOD ARCO)	KIRKWOOD	3-001826	COMPLETE - NFA
HAROLD WEST PROPERTY	NEW CASTLE	3-002356	COMPLETE-NFA
HARRINGTON CITGO	HARRINGTON	1-000463	COMPLETE - NFA
HARRINGTON SUPER SODA	HARRINGTON	1-000106	ON-GOING-CA
HARRIS PROPERTY	MIDDLETOWN	3-002139	COMPLETE- NFA
HART	CLAYTON	6-000338	ON-GOING CA
HAYES PROPERTY	GREENWOOD	8-00324	COMPLETE-NFA
HEALD STREET BP	WILMINGTON	3-000309	ON-GOING
HILLSIDE RD	CLAYMONT	3-000712	COMPLETE-NFA
HOG RANGE ROAD	HICKMAN	1-000594	COMPLETE-NFA
HOSPITAL FOR THE CHRONICALLY ILL	SMYRNA	1-000301	ON-GOING
HOUSTON MINI MARKET (FORMERLY)	HOUSTON	1-000628	COMPLETE- NFA
HUBB PROPERTY, CEDAR TREE CRAFTS	MILLSBORO	5-000960	COMPLETE-NFA
J&G AUTO SALES	GEORGETOWN	5-001033	COMPLETE – NFA
JANET TOWNSEND PROPERTY	BRIDGEVILLE	5-001201	COMPLETE – NFA
JAY’S MARKET (FORMERLY)	FRANKFORD	5-000146	COMPLETE – NFA
JENKINS AIRPORT	CAMDEN-WYOMING	1-000895	ON-GOING – CA
JG TOWNSEND	GEORGETOWN	5-001149	COMPLETE – NFA
JIM & HAROLD’S TOWING	NEW CASTLE	3-002594	COMPLETE-NFA
JOANNES BAIT & TACKLE	DAGSBORO	5-000458	COMPLETE – NFA
JOES PAINT & BODY	GEORGETOWN	5-000397	ON-GOING-CA
JOHN CORNLEY RESIDENCE	WILMINGTON	3-002620	COMPLETE – NFA
JONES ATLANTIC	WILMINGTON	3-000288	COMPLETE- NFA
JV AUTO	STANTON	3-000052	COMPLETE – NFA
KAREN GEORGE RESIDENCE	NEWARK	3-002926	COMPLETE – NFA

**ATTACHMENT B (CONTINUED):
SITE REPORTING TABLES BY PHASE/STATUS**

**Table 6
State Lead Tank Project Status
as of Fiscal Year Ending 2022**

SITE NAME	TOWN	SITE ID #	STATUS/DETERMINATION
KEATING PROPERTY	DOVER	1-000731	COMPLETE- NFA
KEN MEREDITH & SON	HARRINGTON	1-000574	COMPLETE- NFA
KEN'S TRUCK & AUTO	SMYRNA	3-001827	COMPLETE- NFA
KING'S MARKET	LINCOLN	3-002622	ON-GOING – CA
KIRKWOOD MOBIL/3 J'S	WILMINGTON	3-000257	ON-GOING CA
LABRIOLA RESIDENCE	CLAYMONT	3-002476	COMPLETE-NFA
LANGE RESIDENCE (FORMERLY)	WILMINGTON	3-002488	COMPLETE-NFA
LANGSTON PROPERTY	WILMINGTON	3-002676	COMPLETE-NFA
LAURAL SHELL	LAUREL	5-000243	COMPLETE-NFA
LAYTON DAVIS STORE	MILLSBORO	5-000118	COMPLETE-NFA
LEONARD SMALL RESIDENCE	WILMINGTON	3-002565	COMPLETE-NFA
LIGHTHOUSE PROJECT	ELLENDALE	9-000144	COMPLETE- NFA
LOBOZZO RESIDENCE	WILMINGTON	3-002096	COMPLETE- NFA
LOG CABIN RD. WELL IMPACT	MILFORD	9-000126	COMPLETE- NFA
LUCIANO RESIDENCE	NEWARK	3-002647	COMPLETE-NFA
M&H WELDING	MILTON	5-000304	COMPLETE-NFA
MAIN STREET SELBYVILLE	SELBYVILLE	5-001018	COMPLETE-NFA
MARIA BENNET PROPERTY	MAGNOLIA	1-000789	COMPLETE – NFA
MARINER'S BETHEL CHURCH	OCEAN VIEW	8-000300	COMPLETE- NFA
MARK MILLER RESIDENCE	WILMINGTON	3-002576	COMPLETE – NFA
MCGRIFF RESIDENCE	CLAYMONT	3-002501	COMPLETE-NFA
MELISSA DiCAMPLI PROPERTY	NEW CASTLE	3-002563	COMPLETE NFA
MESSICK PROPERTY (MERGED WITH 5-000484)	LINCOLN	9-000099	ON-GOING- CA
MIKE'S MINI MARKET	FREDERICA	1-000140	COMPLETE- NFA
MILLMAN'S SERVICE CENTER	MILTON	5-000657	COMPLETE- NFA
MISPELLION LIGHTHOUSE	MILFORD	5-000311	COMPLETE- NFA
MOHAWK ELECTRIC, MILFORD	MILFORD	5-000952	COMPLETE- NFA
MT ZION AME CHURCH WELL	ELLENDALE	9-000135	ON-GOING- CA
NEW WIND PROPERITES	DOVER	1-000098	COMPLETE-NFA
NICHOLS RESIDENCE	SEAFORD	5-001045	COMPLETE-NFA
OLD LEIPSIC ANTIQUES	LEIPSIC	1-000738	COMPLETE-NFA
O'NEAL	LAUREL	5-001073	ON-GOING
PARADISE NURSERY	SMYRNA	1-000538	COMPLETE-NFA
PEDERSON PROPERTY	CAMDEN	1-000759	COMPLETE-NFA
PERUCCI'S	MILLEVILLE	5-001196	COMPLETE-NFA
PHILLIPS RESIDENCE	CLAYMONT	9-000188	COMPLETE-NFA
PICHETTE ENGINEERING	DELAWARE CITY	3-001572	COMPLETE-NFA
PLATT RESIDENCE	NEW CASTLE	3-002376	COMPLETE- NFA
PURNELL PROPERTY	GEORGETOWN	5-000801	COMPLETE-NFA
PYLES RESIDENCE WELL REPLA.	LINCOLN	9-000122	COMPLETE- NFA

**ATTACHMENT B (CONTINUED):
SITE REPORTING TABLES BY PHASE/STATUS**

**Table 6
State Lead Tank Project Status
as of Fiscal Year Ending 2022**

SITE NAME	TOWN	SITE ID #	STATUS/DETERMINATION
QUEEN THEATRE	WILMINGTON	3-002553	COMPLETE - NFA
R. L. EWING SERVICE STATION	SANDTOWN	1-000695	COMPLETE-NFA
RENEE O'LEARY RESIDENCE	NEWARK	3-002549	COMPLETE-NFA
REYNOLDS PROPERTY	FELTON	1-000527	COMPLETE - NFA
RITE AID/FORMER DAIRY QUEEN	CAMDEN WYOMING	1-000795	COMPLETE - NFA
ROBERT'S SERVICE STATION	MILFORD	5-000102	COMPLETE - NFA
RODNEY ALEXANDER PROPERTY	GEORGETOWN	1-000896	COMPLETE - NFA
ROGERS PROPERTY	MILLSBORO	5-000783	ON-GOING- CA
ROSIE'S PLACE	FRANKFORD	5-000335	COMPLETE - NFA
ROWLAND RESIDENCE, HICKO- RYDALE	DOVER	1-000760	COMPLETE-NFA
SAMAROO	GEORGETOWN	8-000299	COMPLETE-NFA
SAVANNAH ROAD	LEWES	9000179/1 80	COMPLETE - NFA
SELBYVILLE FOODRITE	SELBYVILLE	5-000726	COMPLETE-NFA
SELBYVILLE SHELL	SELBYVILLE	5-000141	COMPLETE - NFA
SELBYVILLE TOWN WELL	SELBYVILLE	9-000154	COMPLETE - NFA
SELBYVILLE WAREHOUSE RAIL- ROAD RIGHT OF WAY	SELBYVILLE	5-000925	ON-GOING - CA
SEMPLE RESIDENCE	DOVER	6-000278	COMPLETE - NFA
SEWARD SERVICE CENTER	HARTLY	1-000100	COMPLETE-NFA
SHARP RESIDENCE	GEORGETOWN	5-000903	COMPLETE - NFA
SHEILA WASHINGTON PROPERTY	NEW CASTLE	3-002566	COMPLETE - NFA
SHELLY GIBBS PROPERTY	NEWARK	3-002559	COMPLETE-NFA
SHEPHERD PROPERTY	NEW CASTLE	3-002514	COMPLETE-NFA
SHOPPES OF MILLVILLE	MILLVILLE	9-000155	COMPLETE-NFA
SHORT'S GARAGE	BRIDGEVILLE	5-000809	COMPLETE-NFA
SHUBH LABH, LLC	DOVER	1-000126	COMPLETE-NFA
SHULTIES GROCERY	WYOMING	1-000151	DEACTIVATED
STANLEY RESIDENCE	DOVER	6-000298	COMPLETE - NFA
STEELE'S HOME HEALTH CARE (FORMERLY)	DOVER	1-000797	COMPLETE - NFA
SUPREME AUTO BODY	WILMINGTON	3-002286	COMPLETE-NFA
SYNTHESIS TECHNOLOGIES (FORMERLY)	NEWARK	3-000808	COMPLETE-NFA
TAMMY WILLIAMS RESIDENCE	NEW CASTLE	3-002622	COMPLETE - NFA
TAYLORS AUTO SERVICE	BLADES	5-001028	COMPLETE - NFA
TBE HOLDINGS	WILMINGTON	3-002478	COMPLETE-NFA
THOMPSON PROPERTY	LAUREL	5-000906	COMPLETE-NFA
TOPSIDE MARINA	BETHANY	5-000694	COMPLETE-NFA
TOWNSEND BP	TOWNSEND	3-000320	COMPLETE-NFA
TROOP #1	WILMINGTON	3-000572	ON-GOING-CA

**ATTACHMENT B (CONTINUED):
SITE REPORTING TABLES BY PHASE/STATUS**

Table 6

**State Lead Tank Project Status
as of Fiscal Year Ending 2022**

SITE NAME	TOWN	SITE ID #	STATUS/DETERMINATION
TRUCK TIRE AMERICA	NEWARK	3-002539	ON-GOING CA
TRUITT'S SMALL ENGINE REPAIR	FRANKFORD	5-001111	COMPLETE –NFA
TRU-VALUE ACRES WATERLINE	REHOBOTH	9-000100	COMPLETE-NFA
UNCLE TED'S TRADING POST	MILLSBORO	5-000341	COMPLETE- NFA
UNIVERSAL – 1003	HARRINGTON	1-000463	COMPLETE- NFA
VICKERS PROPERTY	MILTON	5-001012	COMPLETE-NFA
VILLAGE MARKET	CLAYMONT	3-000251	COMPLETE-NFA
VIOLET DEAN RESIDENCE	GREENWOOD	6-000317	COMPLETE-NFA
WALLA PROPERTY	MILLSBORO	5-001009	COMPLETE-NFA
WAREHOUSE IN SELBYVILLE	SELBYVILLE	5-000925	COMPLETE-NFA
WARREN PROPERTY	WYOMING	1-000766	COMPLETE - NFA
WAWA TYBOOTS	NEW CASTLE	3-000971	ON-GOING – CA
WDOV / WDSO	DOVER	1-000187	COMPLETE-NFA
WELSH TRACT ROAD	NEWARK	9-000139	COMPLETE-NFA
WEST DENNY'S ROAD WELL IMPACT	DOVER	9-000128	ON-GOING-CA
WILLIAM ELLIOT RESIDENCE	DOVER	1-000884	COMPLETE-NFA
WILMINGTON MANOR FIRE	NEW CASTLE	3-002119	COMPLETE-NFA
WILSON'S RADIATOR SHOP	NEW CASTLE	3-001123	COMPLETE- NFA
WOLLEYHAN (FORMERLY)	WILMINGTON	3-002089	COMPLETE- NFA
WRIGHT'S EXXON	MILTON	5-000273	ONGOING - CA
YOUNG'S FUNERAL HOME	MILTON	5-001022	COMPLETE-NFA
YOUR NEIGHBORHOOD STORE AKA SHORE STOP 25	MILLSBORO	5-000346	COMPLETE-NFA

**ATTACHMENT B (CONTINUED):
SITE REPORTING TABLES BY PHASE/STATUS**

Table 7

**Completed VCP and Brownfield Development Program Sites
As of Fiscal Year, Ending 2022**

SITE NAME	TOWN	COUNTY	DE SITE ID #	TYPE
0 RED LION ROAD	NEW CASTLE	NEW CASTLE	1628	BF
2-4 EAST 7TH STREET	WILMINGTON	NEW CASTLE	1636	BF
12TH & BRANDYWINE STREET GARDENS	WILMINGTON	NEW CASTLE	0328	BF
200 SOUTH MARKET STREET	WILMINGTON	NEW CASTLE	1224	BF
201/205 A STREET	WILMINGTON	NEW CASTLE	1228	BF
207 A STREET	WILMINGTON	NEW CASTLE	1247	BF
218 MARYLAND AVE	WILMINGTON	NEW CASTLE	1553	BF
333 S GOVERNORS AVE	DOVER	KENT	0359	BF
504 KIRKWOOD HIGHWAY	WILMINGTON	NEW CASTLE	1661	BF
511 CONCORD AVE	WILMINGTON	NEW CASTLE	1544	BF
735 B SOUTH MARKET STREET	WILMINGTON	NEW CASTLE	1632	BF
800-900 OGLETOWN ROAD	NEWARK	NEW CASTLE	1656	BF
837 N DUPONT HIGHWAY	DOVER	KENT	1700	BF
900 S FRANKLIN STREET	WILMINGTON	NEW CASTLE	1458	BF
1001 GARASCHESS LANE	WILMINGTON	NEW CASTLE	1556	BF
1001 NORTH SPRUCE STREET	WILMINGTON	NEW CASTLE	1642	BF
1289-1313 FREDERICA ROAD	FREDERICA	KENT	1667	BF
4001 NEW CASTLE AVE	WILMINGTON	NEW CASTLE	1455	BF
ABLE MACHINE FORMERLY	WILMINGTON	NEW CASTLE	1576	BF
AVON PRODUCTS FORMORLY	NEWARK	NEW CASTLE	1595	BF
BASHER LANE	HOCKESSIN	NEW CASTLE	1310	BF
BERRY PLASTICS	HARRINGTON	KENT	1526	BF
BRANDYWINE FIBRE	WILMINGTON	NEW CASTLE	1109	BF
CHESAPEAKE SUPPLY FORMER	DOVER	KENT	1334	BF
CHESTNUT HILL EXXON FORMER	NEWARK	NEW CASTLE	1520	BF
CLASSIC IMAGE FORMER	WILMINGTON	NEW CASTLE	1464	BF
COBRA MACHINE	WILMINGTON	NEW CASTLE	1181	BF
DAVIDSON LANE	NEW CASTLE	NEW CASTLE	1547	BF
DEEMER STEEL NINTH & WASH- INGTON	NEW CASTLE	NEW CASTLE	1087	BF
DEERFIELD FARMS	DOVER	KENT	1701	BF
FRANKLIN FIBRE EXPANSION	WILMINGTON	NEW CASTLE	1542	BF
FREE FLOW PACKAGING FORMER	NEWARK	NEW CASTLE	1597	BF
GARRETT HOUSE	WILMINGTON	NEW CASTLE	1466	BF
HARRY WOOD LANDFILL OU1	NEW CASTLE	NEW CASTLE	1493	BF
HOMALITE	WILMINGTON	NEW CASTLE	0256	BF
JOHNS BODY SHOP	WILMINGTON	NEW CASTLE	1683	BF
LEXINGTON AVE	SMYRNA	KENT	1357	BF
LIPPINCOTT PROJECT	WILMINGTON	NEW CASTLE	1430	BF
METAL MASTERS	SMYRNA	KENT	0043	BF
MERKIN AUTO SPRING OU2	WILMINGTON	NEW CASTLE	1476	BF
MIDDLETOWN MANOR	MIDDLETOWN	NEW CASTLE	1483	BF
MIL-DEL FORMER	MILFORD	SUSSEX	1634	BF

**ATTACHMENT B (CONTINUED):
SITE REPORTING TABLES BY PHASE/STATUS**

Table 7

**Completed VCP and Brownfield Development Program Sites
As of Fiscal Year, Ending 2022**

SITE NAME	TOWN	COUNTY	DE SITE ID #	TYPE
MINISTRY ROW	WILMINGTON	NEW CASTLE	1452	BF
MOREHEAT FORMER	WILMINGTON	NEW CASTLE	1613	BF
NEW CASTLE GAS	NEW CASTLE	NEW CASTLE	0167	BF
PAVILION PROPERTY	WILMINGTON	NEW CASTLE	1395	BF
PB WILMINGTON RF 228	WILMINGTON	NEW CASTLE	1640	BF
PEE WEES TRUCK STOP	DOVER	KENT	1047	BF
PENINSULA PLATING	BLADES	SUSSEX	0287	BF
PENN DEL	WILMINGTON	NEW CASTLE	1057	BF
RAILROAD CROSSING	WILMINGTON	NEW CASTLE	1392	BF
RODNEY DORM COMPLEX FORMER	NEWARK	NEW CASTLE	1658	BF
SOUTH DUPONT SHELL STATION	NEW CASTLE	NEW CASTLE	1510	BF
ST. PATRICKS HOUSE	WILMINGTON	NEW CASTLE	0355	BF
SWAIN PROPERTY	MILFORD	SUSSEX	1686	BF
SYNTECH OU-1	NEWARK	NEW CASTLE	1486	BF
TALLEYVILLE SUNOCO	WILMINGTON	NEW CASTLE	1715	BF
THOMPSON PROPERTY	LEWES	SUSSEX	1527	BF
TIMMONS MARINA FORMER	DAGSBORO	SUSSEX	1360	BF
V & S REDEVELOPMENT	NEW CASTLE	NEW CASTLE	1426	BF
VEI DOVER CROSSROADS PROP- ERTY	DOVER	KENT	1611	BF
WILMINGTON UNIVERSITY BRAN- DYWINE	WILMINGTON	NEW CASTLE	1612	BF
WILSON PROPERTIES	WILMINGTON	NEW CASTLE	1655	BF
57-81 READS WAY	NEW CASTLE	NEW CASTLE	1160	VCP
12TH & WALNUT MBNA	WILMINGTON	NEW CASTLE	1215	VCP
127 THE GREEN	NEWARK	NEW CASTLE	1588	VCP
350 SOUTH MADISON STREET	WILMINGTON	NEW CASTLE	1335	VCP
400 SOUTH MADISON STREET	WILMINGTON	NEW CASTLE	1040	VCP
704 WEST 11TH STREET	WILMINGTON	NEW CASTLE	1142	VCP
779 N DUPONT HIGHWAY	DOVER	KENT	1456	VCP
2621 PHILADELPHIA PIKE	CLAYMONT	NEW CASTLE	1296	VCP
AMOCO POLYMER PLANT INTERM ACTION FORMER	NEW CASTLE	NEW CASTLE	1126	VCP
ANCHOR MOTOR FREIGHT	NEWARK	NEW CASTLE	1034	VCP
ARMY CREEK MARSH	NEW CASTLE	NEW CASTLE	1163	VCP
ASTRO POWER FORMER	NEW CASTLE	NEW CASTLE	1344	VCP
ATLANTIC COAST ENVIRONMENT	DOVER	KENT	1379	VCP
BANCROFT MILLS	WILMINGTON	NEW CASTLE	1130	VCP
BELLANCA HANGER	NEW CASTLE	NEW CASTLE	1061	VCP
BLUE BALL DAIRY BARN	WILMINGTON	NEW CASTLE	1307	VCP
BLUE HEN MALL DRUM SITE	DOVER	KENT	1480	VCP
BONSALL SITE	DELMAR	SUSSEX	1400	VCP
BOYDS CORNER FARM	MIDDLETOWN	NEW CASTLE	1499	VCP

**ATTACHMENT B (CONTINUED):
SITE REPORTING TABLES BY PHASE/STATUS**

Table 7

**Completed VCP and Brownfield Development Program Sites
As of Fiscal Year, Ending 2022**

SITE NAME	TOWN	COUNTY	DE SITE ID #	TYPE
BRANDYWINE HUNT SOIL PILE	HOCKESSIN	NEW CASTLE	1305	VCP
CARTER HOMES	HARTLY	KENT	1020	VCP
COAST GUARD PROPERTY II	MIDDLETOW	NEW CASTLE	1356	VCP
CURTIS CROWN PAPER COMPANY FORMER	NEWARK	NEW CASTLE	1266	VCP
DAGSBORO SUBSTATION FORMER	DAGSBORO	SUSSEX	1287	VCP
DEEMER STEEL - OU1	NEW CASTLE	NEW CASTLE	1243	VCP
DEL CHAPEL - OU1	NEWARK	NEW CASTLE	1121	VCP
DEL CHAPEL - OU2	NEWARK	NEW CASTLE	1124	VCP
DEL CHAPEL - OU3	NEWARK	NEW CASTLE	1125	VCP
DELDOT WEST STREET CONNECT- OR	WILMINGTON	NEW CASTLE	1157	VCP
DUPONT LOUVIERS – GORE	NEWARK	NEW CASTLE	1050	VCP
ESTATES OF FAIRWAY VILLAGE	OCEAN VIEW	SUSSEX	1443	VCP
FIFTH AND DUPONT STREET	WILMINGTON	NEW CASTLE	1236	VCP
FOURTH STREET BRIDGE	WILMINGTON	NEW CASTLE	1184	VCP
GILDEA NURSERY FORMERLY	NEWARK	NEW CASTLE	1251	VCP
HAINES STREET/UNIVERSITY COM- MONS	SMYRNA	KENT	1019	VCP
HERCULES FARM	WILMINGTON	NEW CASTLE	1048	VCP
HERCULES ROAD & LANCASTER PIKE	WILMINGTON	NEW CASTLE	1492	VCP
ICI-OU2	NEW CASTLE	NEW CASTLE	1071	VCP
J G TOWNSEND FROZEN FOOD	GEORGETOWN	SUSSEX	1261	VCP
LEBANON CHEMICAL	DOVER	SUSSEX	1027	VCP
MARCUS HOOK LIGHTHOUSE	WILMINGTON	NEW CASTLE	1354	VCP
MARKET STREET SIP	WILMINGTON	NEW CASTLE	1485	VCP
MARYLAND NPL	BALTIMORE		1195	VCP
MCKEES PARK LANDFILL	NEWARK	NEW CASTLE	1366	VCP
MEADOWOOD II SOLVENT AREA	NEWARK	NEW CASTLE	1477	VCP
MICUCIO BROTHERS	SUMMIT	NEW CASTLE	0261	VCP
MLK BLVD. – DELDOT	WILMINGTON	NEW CASTLE	1155	VCP
MOORE BROTHERS	WILMINGTON	NEW CASTLE	1117	VCP
NCCO COURTHOUSE PROPOSED	WILMINGTON	NEW CASTLE	1146	VCP
NAAMANS ROAD TEXACO	WILMINGTON	NEW CASTLE	1135	VCP
NVF NEWARK - MARGARET STREET	NEWARK	NEW CASTLE	1086	VCP
OLD LIMESTONE ROAD GARAGE	WILMINGTON	NEW CASTLE	1190	VCP
OSPREY POINT SUBDIVISION	REHOBOTH BEACH	SUSSEX	1647	VCP

**ATTACHMENT B (CONTINUED):
SITE REPORTING TABLES BY PHASE/STATUS**

Table 7

**Completed VCP and Brownfield Development Program Sites
As of Fiscal Year, Ending 2022**

SITE NAME	TOWN	COUNTY	DE SITE ID #	TYPE
PAGOINIS PROPERTY	LEWES	SUSSEX	1035	VCP
PENCADER CORPORATE CENTER	NEWARK	NEW CASTLE	1098	VCP
PORT OF WILM - NORTH AMERICAN SMELTING CO	WILMINGTON	NEW CASTLE	0230	VCP
PORT OF WILMINGTON WARE- HOUSE H.	WILMINGTON	NEW CASTLE	1341	VCP
PROCESS INDUSTRIES	NEWARK	NEW CASTLE	1032	VCP
RAMBLETON ACRES AUTO SER- VICE	NEW CASTLE	NEW CASTLE	1470	VCP
SHIPS TAVERN PARKING GARAGE	WILMINGTON	NEW CASTLE	1375	VCP
SPEAKMAN PROPERTY	WILMINGTON	NEW CASTLE	1060	VCP
SPI	NEW CASTLE	NEW CASTLE	1069	VCP
STATE LINE AUTO SALES FORMER	DELMAR	SUSSEX	1479	VCP
TERMINAL AVE WIDENING	WILMINGTON	NEW CASTLE	1026	VCP
THERMAL LOOP	WILMINGTON	NEW CASTLE	1183	VCP
WALKER FARM PROPERTY	HOCKESSIN	NEW CASTLE	1607	VCP
VETS WELDING COMPANY	WILMINGTON	NEW CASTLE	1276	VCP
WILMINGTON ASPHALT PLANT	WILMINGTON	NEW CASTLE	1448	VCP
WILMINGTON PUBLIC WORKS YARD OU1	WILMINGTON	NEW CASTLE	1330	VCP
WILMINGTON PUBLIC WORKS YARD OU2	WILMINGTON	NEW CASTLE	1333	VCP
ZENECA	NEW CASTLE	NEW CASTLE	1070	VCP

**ATTACHMENT B (CONTINUED):
SITE REPORTING TABLES BY PHASE/STATUS**

**Table 8
Completed HSCA Sites
As of Fiscal Year, Ending 2022**

SITE NAME	CITY	COUNTY	SITE ID#:
7 TH STREET AND SWEDES LANDING ROAD	WILMINGTON	NEW CASTLE	1436
12 TH STREET ASSOCIATES	WILMINGTON	NEW CASTLE	1222
20 MILLSIDE DRIVE	WILMINGTON	NEW CASTLE	0370
101 YORK STREET DELMAR	DELMAR	SUSSEX	0360
154 D. DUPONT HIGHWAY	NEW CASTLE	NEW CASTLE	1387
512 S CLAYMONT STREET	WILMINGTON	NEW CASTLE	1386
731 PHILADELPHIA PIKE GETTY	WILMINGTON	NEW CASTLE	1561
742 SOUTH GOVERNORS AVE	DOVER	KENT	1202
800-810 S MARKET STREET	WILMINGTON	NEW CASTLE	0368
1620/1630 BOWERS STREET	WILMINGTON	NEW CASTLE	1441
A STREET BROWNFIELD CORRIDOR	WILMINGTON	NEW CASTLE	0364
ABEX CORP	NEW CASTLE	NEW CASTLE	0065
ACE CLEANERS	DOVER	KENT	0361
AIR PRODUCT & CHEM INC	DELAWARE CITY	NEW CASTLE	0008
AIRPORT PROPERTY	NEW CASTLE	NEW CASTLE	0090
AIRPORT ROAD ASBESTOS	NEW CASTLE	NEW CASTLE	0267
ALL RITE RUBBISH REMOVAL (OLD)	FELTON	KENT	0212
ALL RITE RUBBISH REMOVAL (NEW)	FELTON	KENT	0211
ALLIED CHEMICAL DRUM	CLAYMONT	NEW CASTLE	0249
AMER PROPERTY	WILMINGTON	NEW CASTLE	0121
AMOCO ASBESTOS LANDFILL	NEW CASTLE	NEW CASTLE	0083
AMOCO FILM PLANT FORMER	NEW CASTLE	NEW CASTLE	1152
ARLON INC	BEAR	NEW CASTLE	0289
ARTIS DRIVE	DOVER	KENT	0112
ASSAWOMAN BAY	MILLSBORO	SUSSEX	0205
ATLANTIC AVE	ELSMERE	NEW CASTLE	0158
ATLANTIC AVIATION TANK FARM	NEW CASTLE	NEW CASTLE	0051
ATLANTIC INDUSTRIAL OPTICS INC.	GEORGETOWN	SUSSEX	0209
AUGUSTINE BEACH / DEL. RIVER	AUGUSTINE BEACH	NEW CASTLE	0204
BAKER PETROLEUM	NEW CASTLE	NEW CASTLE	1226
BARKLEY VILLAGE CATTAFI	WILMINGTON	NEW CASTLE	0136
BANCROFT MILLS PRE-REMEDIAL	WILMINGTON	NEW CASTLE	1101
BAYSHORE CAR & TRUCK RENTAL HSCA	BEAR	NEW CASTLE	1246
BEECHERS LOT	NEWARK	NEW CASTLE	0135
BELL PROPERTY DISPOSAL PIT	HOCKESSIN	NEW CASTLE	0215
BETHANY BEACH	BETHANY BEACH	SUSSEX	1161
BETHANY BEACH GAP FILLER	BETHANY BEACH	SUSSEX	0316
BIG STONE BEACH FIRE CONTROL STATION	MILFORD	KENT	0297
BIODIESEL PLANT	SMYRNA	KENT	1390

**ATTACHMENT B (CONTINUED):
SITE REPORTING TABLES BY PHASE/STATUS**

**Table 8
Completed HSCA Sites
As of Fiscal Year, Ending 2022**

SITE NAME	CITY	COUNTY	SITE ID#:
BLACKBIRD STATION ROAD	TOWNSEND	NEW	1468
BLUE HEN AUTO BODY, INC.	DOVER	KENT	0243
BOXWOOD INDUSTRIAL PARK	WILMINGTO	NEW	0185
BRANDYWINE CREEK MYSTERY OIL SITE	WILMINGTO	NEW	0305
BREAD AND CHEESE ISLAND	NEWPORT	NEW	0075
BRINE SLUDGE LANDFILL	NEW	NEW	0296
BROADKIILL BEACH DRUM	MILTON	SUSSEX	0258
BROADKILL BEACH FIRE CONTROL STATION	MILTON	SUSSEX	0309
BROOKSIDE DUMP	NEWARK	NEW CASTLE	0184
BROWNTOWN	WILMINGTON	NEW CASTLE	0285
CAPE HENLOPEN FIRE CONTROL STATION	LEWES	SUSSEX	0310
CAPITOL RECOVERY	DOVER	KENT	0025
CARPENTER BORROW PIT	MILFORD	KENT	0233
CASTLE FORD	NEW CASTLE	NEW CASTLE	0192
CENTERVILLE ROAD PCE	WILMINGTON	NEW CASTLE	1290
CHADWICK APARTMENTS	WILMINGTON	NEW CASTLE	1285
CHAPMAN ROAD	NEWARK	NEW CASTLE	0034
CHEMDECON TRAILER	DOVER	KENT	0254
CHESWOLD LANDFILL/COKERS #4	CHESWOLD	KENT	0002
CHICAGO BRIDGE & IRON CO - OU2	NEW CASTLE	NEW CASTLE	1038
CHRISTINA MALL	CHRISTINA	NEW CASTLE	0186
CHRISTINA AVE SOUTH	WILMINGTON	NEW CASTLE	1079
CHRISITNA RIVER PCB MASS LOADING	WILMINGTON	NEW CASTLE	1422
CIBA-GEIGY SEEP	NEWPORT	NEW CASTLE	0271
CIBA SPECIALTY CHEMICALS	NEWPORT	NEW CASTLE	1301
CITI STEEL AREA B	WILMINGTON	NEW CASTLE	0307
CITY OF WILMINGTON MARINE TERMINAL	WILMINGTON	NEW CASTLE	0099
COAST GUARD PROPERTY I	TOWNSEND	NEW CASTLE	1355
COCHRAN & TRIVITS FIRESTONE	NEW CASTLE	NEW CASTLE	1274
COKERS LANDFILL #3	DOVER	KENT	0003
COLEMAN BURNING PIT	SELBYVILLE	SUSSEX	0237
COLLINS PARK WELL	NEW CASTLE	NEW CASTLE	0354
COLLINS SITE	GUMBURO	SUSSEX	0220
CURTIS PAPER MILL – WATER TREATMENT AREA	NEWARK	NEW CASTLE	0194
DCI PROPERTY	WILMINGTON	NEW CASTLE	1104
DEEMERS BEACH DUMPSITE	NEW CASTLE	NEW CASTLE	0078
DELAWARE AIR NATIONAL GUARD 2 UST RE-MOVALS	NEW CASTLE	NEW CASTLE	1506
DELAWARE BAY DRUM	CAMDEN	KENT	0203
DELAWARE BRICK PIT	NEW CASTLE	NEW CASTLE	1151
DELAWARE CAR COMPANY PRE-REMEDIAL	WILMINGTON	NEW CASTLE	1059
DELAWARE CORRECTIONAL CENTER	SMYRNA	NEW CASTLE	0134

**ATTACHMENT B (CONTINUED):
SITE REPORTING TABLES BY PHASE/STATUS**

**Table 8
Completed HSCA Sites
As of Fiscal Year, Ending 2022**

SITE NAME	CITY	COUNTY	SITE ID#:
DELAWARE FARMS INC	LAUREL	SUSSEX	0014
DELAWARE HOSPITAL FOR THE CHRONICALLY	SMYRNA	KENT	0119
DELAWARE RIVER DRUMS	AUGUSTINE	NEW CASTLE	0265
DELAWARE STATE HWY DEPARTMENT	MIDDLETOWN	NEW CASTLE	0098
DELDOT TWEEDS TAVERN	HOCKESSIN	NEW CASTLE	1406
DELMACO	GEORGETOWN	SUSSEX	0292
DELMARVA POWER & LIGHT DELAWARE CITY	DELAWARE CITY	NEW CASTLE	0100
DELMARVA POWER & LIGHT EDGEMOOR	WILMINGTON	NEW CASTLE	0101
DEWEY BEACH CYLINDER	DEWEY BEACH	SUSSEX	0247
DIAMOND OIL PRE-REMEDIAL	WILMINGTON	NEW CASTLE	1112
DINAHS CORNER	DOVER	KENT	0260
DOBBINSVILLE BALL FIELD	DOBBINSVILLE	NEW CASTLE	1150
DON WILSON AUTO PARTS	WILMINGTON	NEW CASTLE	1174
DONOVAN SALVAGE AREA B	GEORGETOWN	SUSSEX	0349
DOVER BULK OIL STORAGE	DOVER	KENT	1313
DOVER WEST SIDE	DOVER	KENT	1212
DOVER WEST SIDE C	DOVER	KENT	1214
DP&L SUBSTATION DUPONT CHRISTIANA	WILMINGTON	NEW CASTLE	1074
DP&L CONGO MARSH	WILMINGTON	NEW CASTLE	1073
DRAPER JONES	MILFORD	SUSSEX	0218
DRAVO MARSH	WILMINGTON	NEW CASTLE	1041
DRINKING WATER PROTECTION PROJECT	STATEWIDE	STATEWIDE	1225
DUFFY HOPE GARDEN	WILMINGTON	NEW CASTLE	0353
DUPONT CHERRY ISLAND LANDFILL	WILMINGTON	NEW CASTLE	0026
DUPONT EXP. GREENHOUSE	NEW CASTLE	NEW CASTLE	1042
DUPONT EXPERIMENTAL STATION	WILMINGTON	NEW CASTLE	0023
DUPONT GLASGOW BORROW PIT	NEWARK	NEW CASTLE	0088
DUPONT SEAFORD PLANT	SEAFORD	SUSSEX	0021
DURECO PARCEL II	NEW CASTLE	NEW CASTLE	1036
EAST 7 TH STREET PENINSULA DRUM KIT	WILMINGTON	NEW CASTLE	1148
EAST SIDE/SOUTH WILMINGTON	WILMINGTON	NEW CASTLE	1052
EDGEMOOR ABANDONED OFFSHORE DRUMS	WILMINGTON	NEW CASTLE	0257
ESHAM-DAVISFILL AREA	SELBYVILLE	SUSSEX	0239
FAWCETT PROPERTY	NEW CASTLE	NEW CASTLE	1189
F.C SUPPLY CO	DOVER	KENT	0320
FITZGERALD AUTO GLASS	MILFORD	SUSSEX	1339
FMC CORP.	NEWARK	NEW CASTLE	0018
FORT SAULSBURY	MILFORD	SUSSEX	0298
FOWLERS BEACH FIRE CONTROL STATION	FOWLERS BEACH	SUSSEX	0315
FOX RUN BERDEL	BEAR	NEW CASTLE	1015
FOX RUN CAPANO	BEAR	NEW CASTLE	1016

**ATTACHMENT B (CONTINUED):
SITE REPORTING TABLES BY PHASE/STATUS**

**Table 8
Completed HSCA Sites
As of Fiscal Year, Ending 2022**

SITE NAME	CITY	COUNTY	SITE ID#:
FOX RUN CAPLEM	BEAR	NEW CASTLE	1013
FOX RUN – DOUBLE S	BEAR	NEW CASTLE	1012
FOX RUN LEMLEY BROTHERS	BEAR	NEW CASTLE	1006
FOX RUN OPEN SPACE #1	BEAR	NEW CASTLE	1021
FOX RUN OPEN SPACE #2	BEAR	NEW CASTLE	1022
FOX RUN OPEN SPACE #3	BEAR	NEW CASTLE	1023
FOX RUN ROSEWOOD	BEAR	NEW CASTLE	1024
FOX RUN WHITE OAK	BEAR	NEW CASTLE	1014
GENERAL CHEMICAL DEL WORKS	CLAYMONT	NEW CASTLE	0006
GEORGETOWN AIRCRAFT SERVICE INC	GEORGETOWN	SUSSEX	0138
GEORGETOWN GROUNDWATER OU	GEORGETOWN	SUSSEX	1407
GEORGETOWN SUBSTATION FORMERLY	GEORGETOWN	SUSSEX	1286
GLASGOW DRIVE DUMP	GLASGOW	NEW CASTLE	0155
GLASGOW SITE (HARVEY & KNOTTS)	GLASGOW	NEW CASTLE	0056
GORE WI & ASSOCIATES	NEWARK	NEW CASTLE	0214
GRIGCO WASTE OIL RECYCLING CO	DOVER	KENT	0124
GUMBORO DUMP	GUMBORO	SUSSEX	0198
HARRINGTON; ELLA SITE	MILFORD	SUSSEX	0226
HAYNES PARK	WILMINGTON	NEW CASTLE	1002
HEALTHWAYS INC OU2	ODESSA	NEW CASTLE	1318
HELEN CHAMBERS PARK HSCA	WILMINGTON	NEW CASTLE	1255
HELEN CHAMBERS PAR K PRE-REMEDIAL	WILMINGTON	NEW CASTLE	1145
HERBICIDE SPILL SITE	FOWLER BEACH	SUSSEX	0262
HERCULES RESEARCH CENTER	WILMINGTON	NEW CASTLE	0076
HIGH TECH	WILMINGTON	NEW CASTLE	1267
HIGH VOLTAGE MAINTENANCE SITE	WILMINGTON	NEW CASTLE	0140
HILLSIDE ROAD	CLAYMONT	NEW CASTLE	1250
HIPWELL WOODS CAMP	DOVER	KENT	0366
HITCHENS PIT	SELBYVILLE	SUSSEX	0240
HOCKESSIN VALLEY FARMS	HOCKESSIN	NEW CASTLE	1258
HOLLAND MULCH YARD WASTE	WILMINGTON	NEW CASTLE	1489
HUDSON-CULVER SITE	SELBYVILLE	SUSSEX	0241
INDIAN RIVER INLET CYLINDER	OCEAN VIEW	SUSSEX	0264
INDIAN RIVER PP OIL LEAK RIVER-SIDE	MILLSBORO	SUSSEX	1402
INDUSTRIAL PRODUCTS CO	NEW CASTLE	NEW CASTLE	0030
JAMES THOMSON & CO., INC.	GREENWOOD	SUSSEX	0070
JOHNSON CONTROL	MIDDLETOWN	NEW CASTLE	0048
JULIANO SITE	WILMINGTON	NEW CASTLE	0126

**ATTACHMENT B (CONTINUED):
SITE REPORTING TABLES BY PHASE/STATUS**

**Table 8
Completed HSCA Sites
As of Fiscal Year, Ending 2022**

SITE NAME	CITY	COUNTY	SITE ID#:
JUSTICE PROPERTY MILL ROAD	MILLVILLE	SUSSEX	1521
KENT COUNTY LANDFILL	DOVER	KENT	0010
KIRKWOOD STREET PROPERTY	DOVER	KENT	1454
KREWATCH FARM	SEAFORD	SUSSEX	0109
KREWATCH-PHII	SEAFORD	SUSSEX	1077
KRIEGER LANDFILL	WILMINGTON	NEW CASTLE	0156
LANG TRACT ECOLOGICAL RESTORATION	GEORGETOWN	SUSSEX	1378
LAUREL STREET HIGHWAY BORROW PIT	LAUREL	SUSSEX	0182
LEBANON ROAD LANDFILL	DOVER	KENT	0132
LEISURE HAVEN MOBILE HOME PARK	CAMDEN	KENT	1136
LENAPE ORDNANCE MODIFICATION	NEW CASTLE	NEW CASTLE	0303
LEWES BOAT RAMP	LEWES	SUSSEX	0319
LILLY FASTENERS	NEWARK	NEW CASTLE	0295
LONG NECK MERCURY STUDY	STATWIDE	STATEWIDE	1388
LOWER MILL CREEK	WILMINGTON	NEW CASTLE	1594
LUCAS DEVELOPMENT	MILTON	SUSSEX	1201
MAGNOLIA SWAMP	NEWARK	NEW CASTLE	0160
MAKIN FARMS	WYOMING	KENT	1253
MCCLEMENTS FARM	DOVER	KENT	1029
MERCAPTAN AIR RELEASE	DELAWARE	NEW CASTLE	0250
MIDDLEFORD DUMP	MIDDLEFORD	SUSSEX	0181
MILL ROAD LANDFILL	NEWARK	NEW CASTLE	0091
MILLVILLE MOBIL	MILLVILLE	SUSSEX	1227
MILTON DUMP	MILTON	SUSSEX	0180
MINQUADALE GRAVEL PIT	WILMINGTON	NEW CASTLE	0073
MT PLEASANT CHURCH DUMP	LAUREL	SUSSEX	0179
MURRAY MOTORS INC	SEAFORD	SUSSEX	0337
NANTICOKE HOMES	GREENWOOD	SUSSEX	0235
NANTICOKE RIVER MARINA PARK	BLADES	SUSSEX	1229
NEW CASTLE ABANDONED CONT	NEW CASTLE	NEW CASTLE	0148
NEW CASTLE SPILL SITE	NEW CASTLE	NEW CASTLE	0033
NEWARK VOC TREATMENT SYSTEM	NEWARK	NEW CASTLE	1343
NEWPORT BOAT RAMP	NEWPORT	NEW CASTLE	1159
NEWPORT DRUM SITE	NEWPORT	NEW CASTLE	0229
NVF STATE LINE LANDFILL, YORKLYN	YORKLYN	NEW CASTLE	0081
O&T REALTY	NEWPORT	NEW CASTLE	0054
OLD INCINERATOR ASH LANDFILL (ESTATE OF WM. WARD)	WILMINGTON	NEW CASTLE	1179
OLIN CORP SUNOLIN CHEM	CLAYMONT	NEW CASTLE	0059
OXYCHEM OLD BRINE SLUDGE	DELAWARE CITY	NEW CASTLE	0009
PARADEE OIL	DOVER	KENT	0231
PARKWAY GRAVEL	NEWARK	NEW CASTLE	0086

ATTACHMENT B (CONTINUED):
SITE REPORTING TABLES BY PHASE/STATUS

Table 8
Completed HSCA Sites
As of Fiscal Year, Ending 2022

SITE NAME	CITY	COUNTY	SITE ID#:
PAULS ANTIQUES	DOVER	KENT	1095
PEARSONS CORNER DUMP	DOVER	KENT	0104
PENINSULA OIL	GEORGETOWN	SUSSEX	1196
PENN DEL CORNER LOT	WILMINGTON	NEW CASTLE	0317
PENN DEL WOODED AREA	WILMINGTON	NEW CASTLE	0318
PETTINARO TRANSROMER	WILMINGTON	NEW CASTLE	0191
PIGEON POINT LANDFILL	NEW CASTLE	NEW CASTLE	0027
PORTERS LANDFILL	HOUSTON	KENT	0012
PUGH DUMP	DOVER	KENT	0227
QUILLEN PIT	MILLVILLE	SUSSEX	1170
RAINTREE	CHRISTIANA	NEW CASTLE	0171
REEVIS & REEVIS	HOCKESSIN	NEW CASTLE	0072
RIVERSIDE	WILMINGTON	NEW CASTLE	1053
RIVERWALK WETLANDS	NEW CASTLE	NEW CASTLE	1653
ROBSCOTT MANOR	NEWARK	NEW CASTLE	0161
ROGERS & HEALD	WILMINGTON	NEW CASTLE	1467
RT 9 TCE	NEW CASTLE	NEW CASTLE	1271
RUTKOSKE PROPERTY	MIDDLETOWN	NEW CASTLE	1223
SAC TIRE	WILMINGTON	NEW CASTLE	1141
SCARBOROUGH PIT	MILFORD	KENT	0236
SCOTT PAPER CO. - DOVER PLANT	DOVER	KENT	0060
SEAFORD ARBITUS WELL	SEAFORD	SUSSEX	0268
SEAFORD HALL STREET WELL	SEAFORD	SUSSEX	0272
SEARS BLVD	NEWPORT	NEW CASTLE	1437
SES INC,	NEWARK	NEW CASTLE	0062
SHELLPOT CREEK DUMP	WILMINGTON	NEW CASTLE	0077
SHELLPOT CREEK INITIATIVE	NEW CASTLE	NEW CASTLE	1380
SMYRNA COAL GAS	SMYRNA	KENT	0189
SMYRNA SIGNAL DEPOT FORMER	SMYRNA	KENT	0365
SOUTH WILMINGTON EAST & WEST	WILMINGTON	NEW CASTLE	0286
SOUTH WILMINGTON MARSH AREA 1	WILMINGTON	NEW CASTLE	1336
SOUTH WILMINGTON MARSH AREA 2	WILMINGTON	NEW CASTLE	1337
SOUTHBRIDGE GATEWAY	WILMINGTON	NEW CASTLE	0312
SQUARE CLUB LODGE LANDFILL	DOVER	KENT	0145
ST. GEORGES BRIDGE	ST. GEORGES	NEW CASTLE	1193
STADIUM SITE	WILMINGTON	NEW CASTLE	1004
STANDARD ABANDONED DRUM	NEWARK	NEW CASTLE	0263
STANDARD CHLORINE/METACHEM (STATE)	DELAWARE CITY	NEW CASTLE	0321/1279
STATE HWY BORROW PIT	ST GEORGES	NEW CASTLE	0087
SUMMIT AVIATION	MIDDLETOWN	NEW CASTLE	0242
SUNOCO MARCUS HOOK REFINERY	N/A	N/A	1303
TANNERY SITES FORMERLY	WILMINGTON	NEW CASTLE	1256

**ATTACHMENT B (CONTINUED):
SITE REPORTING TABLES BY PHASE/STATUS**

**Table 8
Completed HSCA Sites
As of Fiscal Year, Ending 2022**

SITE NAME	CITY	COUNTY	SITE ID#:
TOWNSEND-INGRAM POND	TOWNSEND	NEW CASTLE	0201
TOWNSEND DUMP - GREARS CORNER	TOWNSEND	NEW CASTLE	0142
TOWNSEND PROCESSING PLANT	TOWNSEND	NEW CASTLE	0200
TRAILS & PATHWAYS C&D CANAL	BEAR	NEW CASTLE	1548
TRAVELINI SITE	FRANKFORD	SUSSEX	0219
UNIVERSITY OF DELAWARE	NEWARK	NEW CASTLE	0288
U.S. CORP OF ENGR CANAL	ST GEORGES	NEW CASTLE	0041
UNITED WATER CO	NEW CASTLE	NEW CASTLE	0195
USAF (TENANT) WILMINGTON AIRPORT	NEW CASTLE	NEW CASTLE	0228
VALLIANT FERTILIZER CO INC.	LAUREL	SUSSEX	0225
VEPCO INDUSTRIAL PARK	CAMDEN	KENT	0177
VETS WELDING/EAST 7TH STREET	WILMINGTON	NEW CASTLE	1254
VICTORIA WOODS	BEAR	NEW CASTLE	1033
WALKERS MILL MOBILE HOME PARK	BRIDGEVILLE	SUSSEX	0168
WCC INVESTIGATIONS	DOVER	KENT	1362
WELL NUMBER 146	FELTON	KENT	1239
WELLS SITE, J	LEWES	SUSSEX	0221
WHITE CLAY CREEK DUMP	NEWARK	NEW CASTLE	0347
WHITE SALVAGE	LAUREL	SUSSEX	0329
WILCO PLUMBING AND HEATING	WILMINGTON	NEW CASTLE	1062
WILKERSON TERRACE	MILFORD	KENT	0234
WILMINGTON SUB. WATER CO	NEWARK	NEW CASTLE	0210
WILMINGTON CSO FORMERLY	WILMINGTON	NEW CASTLE	1113
WILMINGTON COAL GAS NORTH	WILMINGTON	NEW CASTLE	1046
WILMINGTON SPILL SITE	WILMINGTON	NEW CASTLE	1111
WILSON STREET CONTRACTING LANDFILL	NEW CASTLE	NEW CASTLE	0146
WINDY HILLS	NEWARK	NEW CASTLE	0162

**ATTACHMENT B (CONTINUED):
SITE REPORTING TABLES BY PHASE/STATUS**

**Table 9
Long Term Stewardship
As of Fiscal Year, Ending 2022**

SITE NAME	CITY	COUNTY	DE #	PROGRAM
0 GARASCHE LANE	WILMINGTON	NEW CASTLE	1671	BF
0 MILLER ROAD	NEW CASTLE	NEW CASTLE	1394	BF
0 SOUTH CHAPEL STREET	NEWARK	NEW CASTLE	1614	BF
00 MOUNT VERNON STREET	SMYRNA	KENT	1424	BF
22 A EAST 23RD STREET	WILMINGTON	NEW CASTLE	1538	BF
38 VANDEVER AVE	WILMINGTON	NEW CASTLE	1382	BF
97 VANDEVER AVE	WILMINGTON	NEW CASTLE	1429	BF
101 BEECH STREET SITE	WILMINGTON	NEW CASTLE	1364	HSCA
101 SOUTH DUPONT HIGHWAY	NEW CASTLE	NEW CASTLE	1581	VCP
110 WATER STREET	NEWPORT	NEW CASTLE	1582	BF
119 NORTH DUPONT HIGHWAY	DOVER	KENT	1677	BF
121 NORTH POPLAR STREET	WILMINGTON	NEW CASTLE	1066	VCP
200 & 206 MARYLAND AVE	WILMINGTON	NEW CASTLE	1217	VCP
200 WEST 9TH STREET	WILMINGTON	NEW CASTLE	1637	BF
200 CHURCHMANS ROAD EXXON FORMER	NEW CASTLE	NEW CASTLE	1598	BF
210 GREEN HILL AVE	WILMINGTON	NEW CASTLE	1080	VCP
217 NEW ROAD	WILMINGTON	NEW CASTLE	1535	BF
250 SOUTH MADISON STREET	WILMINGTON	NEW CASTLE	1055	VCP
300 GREENHILL AVE	WILMINGTON	NEW CASTLE	1433	BF
320 A STREET	WILMINGTON	NEW CASTLE	1291	BF
401 BELLEVUE ROAD	WILMINGTON	NEW CASTLE	1711	BF
415-427 TATNALL STREET	WILMINGTON	NEW CASTLE	1248	BF
501 A STREET	WILMINGTON	NEW CASTLE	1530	BF
503 SOUTH MARKET STREET	WILMINGTON	NEW CASTLE	1068	BF
510 A STREET	WILMINGTON	NEW CASTLE	1626	BF
524 A & B SOUTH WALNUT STREET	WILMINGTON	NEW CASTLE	1235	VCP
600 A STREET	WILMINGTON	NEW CASTLE	1383	BF
600 N DUPONT HIGHWAY	NEW CASTLE	NEW CASTLE	1539	BF
605 SOUTH BAY ROAD	DOVER	KENT	1564	VCP
605 VANDEVER AVE	WILMINGTON	NEW CASTLE	1444	BF
680 FOREST STREET	DOVER	KENT	1451	BF
701 A STREET	WILMINGTON	NEW CASTLE	1376	BF
721 TERMINAL AVE	WILMINGTON	NEW CASTLE	1558	BF
800 FOULK ROAD	WILMINGTON	NEW CASTLE	1572	BF
829 NORTH CHURCH STREET	WILMINGTON	NEW CASTLE	1446	BF
900 S MADISON STREET	WILMINGTON	NEW CASTLE	1415	BF
920 FRENCH STREET	WILMINGTON	NEW CASTLE	1206	BF
925 N CHURCH STREET	WILMINGTON	NEW CASTLE	1465	BF
1000 FRENCH STREET	WILMINGTON	NEW CASTLE	1115	VCP
1020 CHRISTIANA AVE (FORMER ICS FACILITY)	WILMINGTON	NEW CASTLE	1431	BF
1101 E 8TH STREET	WILMINGTON	NEW CASTLE	1397	BF

**ATTACHMENT B (CONTINUED):
SITE REPORTING TABLES BY PHASE/STATUS**

**Table 9
Long Term Stewardship
As of Fiscal Year, Ending 2022**

SITE NAME	CITY	COUNTY	DE #	PROGRAM
1121 THATCHER STREET	WILMINGTON	NEW CASTLE	1097	VCP
1215 PHILADELPHIA PIKE TEXACO	WILMINGTON	NEW CASTLE	1621	BF
1320 CLIFFORD BROWN WALK	WILMINGTON	NEW CASTLE	1540	BF
1330 THATCHER ST	WILMINGTON	NEW CASTLE	1409	BF
14028 SUSSEX HIGHWAY	GREENWOOD	SUSSEX	1651	BF
18904-18920 COASTAL HIGHWAY	REHOBOTH BEACH	SUSSEX	1587	BF
2002-2012 WEST NEWPORT PIKE	WILMINGTON	NEW CASTLE	1665	HSCA
2004-2008 SHIPLEY ROAD	WILMINGTON	NEW CASTLE	1603	BF
20618 N DUPONT BLVD	GEORGETOWN	SUSSEX	1601	HSCA
2110 NORTHEAST BLVD	WILMINGTON	NEW CASTLE	1528	BF
2207 MITCH ROAD	WILMINGTON	NEW CASTLE	1543	BF
2440 RED LION ROAD	KIRKWOOD	NEW CASTLE	1449	BF
24930 JOHN J WILLIAMS HIGHWAY	MILLSBORO	SUSSEX	1566	VCP
2712-2714 KIRKWOOD HIGHWAY	WILMINGTON	NEW CASTLE	1584	BF
29984 PINNACLE WAY	DAGSBORO	SUSSEX	1555	BF
3006 LANCASTER AVE	WILMINGTON	NEW CASTLE	1568	BF
3022-3028 NEW CASTLE AVE	WILMINGTON	NEW CASTLE	1577	BF
4200 SUMMIT BRIDGE ROAD	MIDDLETOWN	NEW CASTLE	1478	VCP
4601 N MARKET STREET	WILMINGTON	NEW CASTLE	1684	BF
A & TOWNSEND STREET	WILMINGTON	NEW CASTLE	1450	BF
A-1 AUTO PARTS	WILMINGTON	NEW CASTLE	1172	BF
AIR PRIDUCTS FORMER	WILMINGTON	NEW CASTLE	1570	VCP
AMER INDUSTRIAL TECHNOLOGIES	WILMINGTON	NEW CASTLE	1268	BF
AMERICAN SCRAP & WASTE FORMER	WILMINGTON	NEW CASTLE	1131	BF
AMOCO POLYMER PLANT (DURECO)	NEW CASTLE	NEW CASTLE	0084	BF
AMOCO POLYMER PLANT OU2	NEW CASTLE	NEW CASTLE	1368	VCP
AMP CIRCUITS	NEWARK	NEW CASTLE	0248	VCP
AMTRAK CENTRALIZED NATIONAL OPERATIONS CTR	WILMINGTON	NEW CASTLE	1084	HSCA
ARCHIVES BUILDING	DOVER	KENT	1133	VCP
ARMY CREEK LANDFILL	NEW CASTLE	NEW CASTLE	0001	NPL
BABS REAL ESTATE PROPERTY FORMER	NEW CASTLE	NEW CASTLE	1277	BF
BALTIMORE AIR COIL	MILFORD	KENT	1501	VCP
BARCROFT COMPANY	LEWES	SUSSEX	0037	VCP
BAYSHORE CAR & TRUCK RENTAL	BEAR	NEW CASTLE	1162	VCP
BERGER BROTHERS	WILMINGTON	NEW CASTLE	0131	BF
BELL FUNERAL HOME	WILMINGTON	NEW CASTLE	0327	BF

**ATTACHMENT B (CONTINUED):
SITE REPORTING TABLES BY PHASE/STATUS**

**Table 9
Long Term Stewardship
As of Fiscal Year, Ending 2022**

SITE NAME	CITY	COUNTY	DE #	PROGRAM
BEST STONEWORKS INC.	WILMINGTON	NEW CASTLE	1659	VCP
BOBS SPEED SHOP FORMER	LAUREL	SUSSEX	1654	BF
BORDEN CHEMICAL CO	SMYRNA	KENT	0022	HSCA
BOULEVARD SITE	WILMINGTON	NEW CASTLE	1331	BF
BOWEN TRACT	HOCKESSIN	NEW CASTLE	1623	BF
BOYDS CORNER PROPERTY	MIDDLETOWN	NEW CASTLE	1620	BF
BP TRUCK MAINTENANCE FORMER	NEW CASTLE	NEW CASTLE	1592	BF
BRAUN PROPERTY	DOVER	KENT	1487	BF
BUDD METAL	WILMINGTON	NEW CASTLE	0270	BF
BURNS & MCBRIDE	WILMINGTON	NEW CASTLE	0325	BF
BURTON ISLAND ASH LANDFILL	DAGSBORO	SUSSEX	1399	VCP
CABEAN SQUARE	WILMINGTON	NEW CASTLE	1081	VCP
CAPITOL SCRAP	DOVER	KENT	1171	BF
CATHEDRIAL OF ST JOHN	WILMINGTON	NEW CASTLE	1602	BF
CHEM SOLV	CHESWOLD	KENT	0063	NPL
CHESTNUT HILL PLAZA	NEWARK	NEW CASTLE	1391	VCP
CHESTNUT RUN PCE	WILMINGTON	NEW CASTLE	1531	HSCA
CHICAGO BRIDGE & IRON CO - OU1	NEW CASTLE	NEW CASTLE	0038	VCP
CHRISTINA LABS	CHRISTIANA	NEW CASTLE	1219	VCP
CHRISTINA LANDING DEVELOPMENT	WILMINGTON	NEW CASTLE	1321	BF
CHRISTINA MARINA	WILMINGTON	NEW CASTLE	1293	BF
CHRISTINA PARK	WILMINGTON	NEW CASTLE	0300	HSCA
CHRISTINA RIVER PEDESTRIAN WALKWAY	WILMINGTON	NEW CASTLE	1139	VCP
CHRYSLER ASSEMBLY PLANT FORMER OU1, OU2 OU 4, OU6, OU8, OU9	NEWARK	NEW CASTLE	0105	BF
CITY OF NEWARK BIKEWAY	NEWARK	NEW CASTLE	1194	HSCA
CLAYMONT CLEANERS	CLAYMONT	NEW CASTLE	1703	BF
CLEVELAND AVE LANDFILL	NEWARK	NEW CASTLE	0052	VCP
CLEVELAND HEIGHTS	NEWARK	NEW CASTLE	1367	BF
COKERS LANDFILL #1 & #2	CHESWOLD	KENT	0004	HSCA
COMMUNITY PLAZA NEW CASTLE	NEW CASTLE	NEW CASTLE	1567	VCP
COMMONS BLVD SUNOCO FORMER	NEW CASTLE	NEW CASTLE	1514	BF
COMMUNICATIONS PRINTER	NEWARK	NEW CASTLE	1599	BF
CONAWAY MILLER	WILMINGTON	NEW CASTLE	1533	BF
CONNECTIONS CSP	WILMINGTON	NEW CASTLE	1078	BF
CONSOLIDATED FABRICATION	WILMINGTON	NEW CASTLE	1462	BF
CONTAINER CORP	WILMINGTON	NEW CASTLE	0094	HSCA
COUNTY SEAT GARDE WELL	GEORGETOWN	SUSSEX	1416	HSCA
CROWELL CORPORTION FORMER	NEWPORT	NEW CASTLE	1524	BF

**ATTACHMENT B (CONTINUED):
SITE REPORTING TABLES BY PHASE/STATUS**

**Table 9
Long Term Stewardship
As of Fiscal Year, Ending 2022**

SITE NAME	CITY	COUNTY	DE #	PROGRAM
CROZIER CENTER	NEWARK	NEW CASTLE	1428	BF
CSX PROPERTY	WILMINGTON	NEW CASTLE	1044	VCP
CURTIS PAPER MILL	NEWARK	NEW CASTLE	1153	BF
DEEMER STEEL - NEW CASTLE PLANT	NEW CASTLE	NEW CASTLE	0045	VCP
DEEMER STEEL OU2	NEW CASTLE	NEW CASTLE	1244	VCP
DEEMER STEEL OU3	NEW CASTLE	NEW CASTLE	1245	VCP
DEERFIELD SUBSTATION	NEWARK	NEW CASTLE	1616	VCP
DEFIANCE ATHLETIC CLUB FORMER	WILMINGTON	NEW CASTLE	1503	BF
DEL CHAPEL -OU-4	NEWARK	NEW CASTLE	1221	VCP
DEL CHAPEL PLACE	NEWARK	NEW CASTLE	0163	BF
DEL TECH - WILMINGTON	WILMINGTON	NEW CASTLE	1089	VCP
DEL CAMPO BAKERY	WILMINGTON	NEW CASTLE	1736	BF
DELAWARE & VANBUREN AVE.	WILMINGTON	NEW CASTLE	1419	BF
DELAWARE CAR COMPANY	WILMINGTON	NEW CASTLE	1187	VCP
DELAWARE CHILDRENS MUSEUM	WILMINGTON	NEW CASTLE	1434	BF
DELAWARE JOB CORP	WILMINGTON	NEW CASTLE	1241	HSCA
DELAWARE NATIONAL GOLF TECH ASSISTANCE	WILMINGTON	NEW CASTLE	1323	VCP
DELAWARE OLDSMOBILE	WILMINGTON	NEW CASTLE	1289	VCP
DELAWARE SAND & GRAVEL	NEW CASTLE	NEW CASTLE	0017	NPL
DEL TECH PARKING LOT SITE	WILMINGTON	NEW CASTLE	1182	VCP
DELMARVA RURAL MINISTRIES FORMER	DOVER	KENT	1523	BF
DELSTEEL PROPERTY	WILMINGTON	NEW CASTLE	1359	BF
DELTA OUTREACH	WILMINGTON	NEW CASTLE	1504	BF
DENTON LANDFILL	NEW CASTLE	NEW CASTLE	0015	HSCA
DIAMOND OIL	WILMINGTON	NEW CASTLE	1129	VCP
DMA EXPANSION	WILMINGTON	NEW CASTLE	1484	BF
DONOHOS PAINT MFG	DOVER	KENT	1312	VCP
DONOVAN SITE	LEWES	SUSSEX	0151	BF
DOVER ICE PLANT FORMER	DOVER	KENT	1110	BF
DP&L ELSMERE SUBSTATION FORMER	WILMINGTON	NEW CASTLE	1186	HSCA
DP&L INDIAN RIVER/OIL LEAK	DAGSBORO	SUSSEX	1199	VCP
DRAVO SHIP YARD - AMER INDUSTRIAL TECH	WILMINGTON	NEW CASTLE	1092	VCP
DRAVO SHIPYARD - HARBOR ASSOCIATES	WILMINGTON	NEW CASTLE	1096	VCP
DUKES BOAT YARD	MILLSBORO	SUSSEX	1494	BF
DUPONT HASKELL LABS	NEWARK	NEW CASTLE	0125	VCP
DUPONT HAY ROAD "IRON RICH" SITE	WILMINGTON	NEW CASTLE	0024	VCP

**ATTACHMENT B (CONTINUED):
SITE REPORTING TABLES BY PHASE/STATUS**

**Table 9
Long Term Stewardship
As of Fiscal Year, Ending 2022**

SITE NAME	CITY	COUNTY	DE #	PROGRAM
E.I. DUPONT;NEWPORT LANDFILL	NEWPORT	NEW CASTLE	0020	NPL
EASTERN AUTO BODY FORMER	WILMINGTON	NEW CASTLE	1593	BF
EASTERN DISPOSAL RUBBLE PIT	DOVER	KENT	0066	BF
ESTATE OF LESTER NOLAN	WILMINGTON	NEW CASTLE	0165	VCP
FAIRFAX VALET CLEANERS	WILMINGTON	NEW CASTLE	1283	HSCA
FAS MART#259 FORMER	GEORGETOWN	SUSSEX	1586	HSCA
FIFTH AND CHURCH STREETS	WILMINGTON	NEW CASTLE	1082	VCP
FIRST STATE MILITARY ACADEMY	CLAYTON	KENT	1565	BF
FIVE POINTS FIRE COMPANY	WILMINGTON	NEW CASTLE	1168	HSCA
FOULK ROAD GETTY FORMER	WILMINGTON	NEW CASTLE	1482	BF
FOX POINT PARK PHASE I	WILMINGTON	NEW CASTLE	1001	HSCA
FOX POINT PARK PHASE II	WILMINGTON	NEW CASTLE	1011	HSCA
FRANKLIN FIBER	WILMINGTON	NEW CASTLE	1511	BF
FRAZIERS PIT	DOVER	KENT	0154	VCP
GENERAL MOTORS	WILMINGTON	NEW CASTLE	1149	BF
GEORGETOWN COAL GAS	GEORGETOWN	SUSSEX	0188	VCP
GOVERNOR'S SQUARE DRY CLEANER	BEAR	NEW CASTLE	1649	VCP
GRAYS FINE PRINTING	WILMINGTON	NEW CASTLE	1094	VCP
GREENWOOD SERVICE CENTER	GREENWOOD	SUSSEX	1619	BF
GROWMARK FS MILFORD	MILFORD	KENT	1326	VCP
GRUBB ROAD	WILMINGTON	NEW CASTLE	0279	HSCA
HABITAT FOR HUMANITY	WILMINGTON	NEW CASTLE	1372	BF
HABITAT FOR HUMANITY 14TH & WALNUT OU2	WILMINGTON	NEW CASTLE	1534	BF
HALBY CHEMICAL	WILMINGTON	NEW CASTLE	0067	NPL
HAMPTON INN—CHRISTIANA	NEWARK	NEW CASTLE	1541	VCP
HARBESON DEAD SWAN SITE	HARBESON	SUSSEX	0291	HSCA
HARPER THEIL	WILMINGTON	NEW CASTLE	0197	BF
HARRY WOOD LANDFILL	NEW CASTLE	NEW CASTLE	0016	VCP
HARVEY & KNOTTS DRUM SITE	KIRKWOOD	NEW CASTLE	0040	NPL
HARVEY AND HARVEY LANDFILL	NEWPORT	NEW CASTLE	0047	VCP
HASTINGS DRY CLEANERS	DOVER	KENT	1010	HSCA
HEALTHWAYS INC - OU1	ODESSA	NEW CASTLE	0252	HSCA
HELEN CHAMBERS PARK	WILMINGTON	NEW CASTLE	1188	VCP
HOWARD STREET COMMERCIAL DEVELOPMENT	WILMINGTON	NEW CASTLE	1401	BF
HOLLY OAK SUBSTATION FORMERLY	WILMINGTON	NEW CASTLE	1200	BF
HUDSON PIT	LEWES	SUSSEX	0107	BF
ICI AMERICAS INC ATLAS POINT	NEW CASTLE	NEW CASTLE	0049	VCP
INDIAN RIVER DCP	DAGSBORO	SUSSEX	1028	HSCA
INDIAN RIVER LIFE SAVING STATION	DAGSBORO	SUSSEX	1349	HSCA

**ATTACHMENT B (CONTINUED):
SITE REPORTING TABLES BY PHASE/STATUS**

**Table 9
Long Term Stewardship
As of Fiscal Year, Ending 2022**

SITE NAME	CITY	COUNTY	DE #	PROGRAM
INSTEEL WIRE FORMERLY	WILMINGTON	NEW CASTLE	1507	BF
INTERNATIONAL PETROLEUM COR- INTERSECTION OF RT 13 AND RT	WILMINGTON	NEW CASTLE	1278	VCP
ION POWER	DOVER	KENT	1393	BF
JACKSON PIT	DELAWARE	NEW CASTLE	1322	VCP
J&H AUTO SALVAGE FORMERLY	LEWES	SUSSEX	0149	BF
JAMES JULIAN CONSTRUCTION FORMER	ELLENDAL	SUSSEX	1469	HSCA
JG TOWNSEND CANNERY	WILMINGTON	NEW CASTLE	1497	BF
JG TOWNSEND OU1	GEORGETOWN	SUSSEX	0208	VCP
JIFFY LUBE CONCORD PIKE	GEORGETOWN	SUSSEX	1338	VCP
JOE WHITE MEMORIAL BALLFIELD	WILMINGTON	NEW CASTLE	1471	VCP
JUSTISON LANDING	WILMINGTON	NEW CASTLE	0299	HSCA
JUSTISON LANDING PHASE II	WILMINGTON	NEW CASTLE	1377	BF
KALMAR NYCKEL CHALLENGE PRO- GRAM	WILMINGTON	NEW CASTLE	1519	BF
KANEKA CORPORATION OF DELA- WARE	WILMINGTON	NEW CASTLE	0339	BF
KEMPF STORAGE	DELAWARE CITY	NEW CASTLE	1292	VCP
KENT BUILDING	WILMINGTON	NEW CASTLE	1481	BF
KENT COUNTY LANDFILL/HOUSTON	WILMINGTON	NEW CASTLE	1197	VCP
KENTON LANDFILL - OU1	HOUSTON	KENT	0029	HSCA
KING COLE CANNERY REMEDIAL	KENTON	KENT	0108	HSCA
KIRK BUILDING PROPERTY	MILTON	SUSSEX	1252	BF
KIRKWOOD HIGHWAY GULF FORMER	WILMINGTON	NEW CASTLE	1132	VCP
KRIEGER FINGER PROPERTY	WILMINGTON	NEW CASTLE	1495	BF
KRUSE PLAYGROUND SITE	WILMINGTON	NEW CASTLE	1067	VCP
LARRY LONG	WILMINGTON	NEW CASTLE	0111	HSCA
LAUREL GRAIN #2	LEWES	SUSSEX	0232	VCP
LEWES BOAT YARD	LEWES	SUSSEX	0232	VCP
LEWES COAL GAS	LEWES	SUSSEX	1625	BF
LIDL GROCERY STORE	LEWES	SUSSEX	1167	BF
LIMESTONE SHOPPING CENTER	DOVER	KENT	1643	BF
LIQUID ALCHEMY	MARSHALLTON	NEW CASTLE	1418	BF
M&N PROPERTY	WILMINGTON	NEW CASTLE	1605	BF
MADISON GARDENS	WILMINGTON	NEW CASTLE	1496	BF
MADISON STREET CONNECTION	WILMINGTON	NEW CASTLE	1332	BF
MAFFETT 12TH STREET PROPERTY	WILMINGTON	NEW CASTLE	1085	VCP
MARINA OVERLOOK	WILMINGTON	NEW CASTLE	1299	VCP
MARYLAND AVE AND I-95 PROPERTY	WILMINGTON	NEW CASTLE	1328	BF
MAY B. LEASURE ELEMENTARY SCHOOL	WILMINGTON	NEW CASTLE	1099	VCP
	BEAR	NEW CASTLE	1088	HSCA

**ATTACHMENT B (CONTINUED):
SITE REPORTING TABLES BY PHASE/STATUS**

**Table 9
Long Term Stewardship
As of Fiscal Year, Ending 2022**

SITE NAME	CITY	COUNTY	DE #	PROGRAM
MCGRELLIS AUCTION HOUSE FOR-	HOCKESSIN	NEW	1610	BF
MECO DRIVE	WILMINGTON	NEW	1103	HSCA
MERKIN AUTO SPRING COMPANY	WILMINGTON	NEW	1175	BF
MIGHTY MUFFLER	WILMINGTON	NEW	1536	BF
MIKE'S MINI MART FORMER	FREDERICA	KENT	1578	BF
MILTON RAILS TO TRAILS	MILTON	SUSSEX	1460	BF
MILTON RIVERFRONT FORMER	MILTON	SUSSEX	1517	BF
MITCHELL SHOP FORMER	BEAR	NEW CASTLE	1720	BF
MODERN EQUIPMENT FORMER	WILMINGTON	NEW CASTLE	1557	BF
MOORE DUMP	SEAFORD	SUSSEX	0202	HSCA
MORRIS WORK RELEASE CENTER	DOVER	KENT	1143	VCP
MOTOR WHEEL CORPORATION	NEWARK	NEW CASTLE	0175	HSCA
MOVABLE FEAST	WILMINGTON	NEW CASTLE	1063	VCP
NAGA FOODS	WILMINGTON	NEW CASTLE	1369	BF
NCC RAILS TO TRAILS	WILMINGTON	NEW CASTLE	1475	VCP
NEW MARKET VILLAGE	ELLENDALE	SUSSEX	1075	HSCA
NEWARK LANDFILL	NEWARK	NEW CASTLE	0039	VCP
NEWARK LUMBER	NEWARK	NEW CASTLE	1140	VCP
NEW CASTLE FIRE SCHOOL	NEW CASTLE	NEW CASTLE	1064	VCP
NORTHERN PATHWAY	WILMINGTON	NEW CASTLE	1385	BF
NVF COMPANY NEWARK	NEWARK	NEW CASTLE	0199	BF
OCEANIC GAS FORMER	WILMINGTON	NEW CASTLE	1562	BF
ONE CHRISTINA CENTER	WILMINGTON	NEW CASTLE	1076	VCP
P & C ROOFING (PRE-REMEDIAL)	WILMINGTON	NEW CASTLE	1158	BF
PACK AND PROCESS	WILMINGTON	NEW CASTLE	1421	BF
PANELLA SKI SHOP PROPERTY	WILMINGTON	NEW CASTLE	1423	BF
PENCADER PLAZA DRY CLEANERS	NEWARK	NEW CASTLE	1551	VCP
PENINSULA PARK LLC	WILMINGTON	NEW CASTLE	1147	BF
PENINSULA VENTURES	WILMINGTON	NEW CASTLE	1294	BF
PENNY HILL SHOPPING CENTER	WILMINGTON	NEW CASTLE	1657	VCP
PEP-UP FORMER	GEORGETOWN	SUSSEX	1491	BF
PEP UP OU-2 FORMER	GEORGETOWN	SUSSEX	1571	HSCA
PERMAFLEX ROLLERS FORMER	NEWARK	NEW CASTLE	1512	BF
PETRILLO PROPERTY	NEW CASTLE	NEW CASTLE	1281	BF
PHILADELPHIA PIKE TEXACO FORMER	WILMINGTON	NEW CASTLE	1622	BF
PIT STOP DELI FORMER	FELTON	KENT	1666	BF
PLAYTEX PROPERTY FORMER	DOVER	KENT	1552	BF
POSSUM PARK MALL DRY CLEANER	NEWARK	NEW CASTLE	1629	VCP
POTTS PROPERTY	WILMINGTON	NEW CASTLE	0169	VCP

**ATTACHMENT B (CONTINUED):
SITE REPORTING TABLES BY PHASE/STATUS**

**Table 9
Long Term Stewardship
As of Fiscal Year, Ending 2022**

SITE NAME	CITY	COUNTY	DE #	PROGRAM
PROCINO PLATING	BLADES	SUSSEX	0344	VCP
PURE GREEN INDUSTRIES INC.	WILMINGTON	NEW CASTLE	1054	VCP
RED LION PROPERTY	NEW CASTLE	NEW CASTLE	1100	VCP
REIBMAN RR EASEMENT	WILMINGTON	NEW CASTLE	1463	VCP
REICHHOLD CHEMICAL	CHESWOLD	KENT	0245	BF
RIVERFRONT HEADQUARTERS	WILMINGTON	NEW CASTLE	1309	BF
RIVERFRONT HOTEL	WILMINGTON	NEW CASTLE	1518	BF
RIVERFRONT OFFICE BUILDING	WILMINGTON	NEW CASTLE	1237	VCP
RIVERFRONT PARK	WILMINGTON	NEW CASTLE	1116	VCP
RIVERWALK APARTMENTS	NEW CASTLE	NEW CASTLE	1641	VCP
RIVERWALK PHASE V & VI (P&C	WILMINGTON	NEW CASTLE	1164	VCP
RODNEY VILLAGE SHOPPING CEN- TER	DOVER	KENT	1288	VCP
RT 4 ORCHARD	NEW CASTLE	NEW CASTLE	1205	VCP
RT. 40 STEEL DRUM SITE	BEAR	NEW CASTLE	0141	HSCA
RT 113 ASSOCIATES	GEORGETOWN	SUSSEX	1414	BF
SARDO AND SONS	WILMINGTON	NEW CASTLE	1105	VCP
SCHWARTZ PROPERTY	WILMINGTON	NEW CASTLE	1389	BF
SCULL PROPERTY	DOVER	KENT	0153	VCP
SELBYVILLE FOODRITE FORMER	SELBYVILLE	SUSSEX	1660	BF
SEALAND MT PLEASANT	MIDLLETOWN	NEW CASTLE	0092	HSCA
SHUSTERS AUTO SALVAGE	WILMINGTON	NEW CASTLE	1178	BF
SILVER LAKE PARK FILL	DOVER	KENT	0085	HSCA
SMO GAS STATION FORMER	NEWARK	NEW CASTLE	1537	BF
SOUTH GARASCHE'S LANE	WILMINGTON	NEW CASTLE	1681	BF
SOUTH STATE STREET LANDFILL	DOVER	KENT	0143	HSCA
SOUTH WILMINGTON STORM WATER PILOT	WILMINGTON	NEW CASTLE	1500	BF
SOUTHWOOD FARMS	HOCKESSIN	NEW CASTLE	1306	VCP
SPEAKMAN TOWNHOMES	WILMINGTON	NEW CASTLE	1347	BF
STAR BUILDING FORMER	WILMINGTON	NEW CASTLE	1425	BF
STEVENSON LANE	GEORGETOWN	SUSSEX	0224	VCP
STRAIGHT LINE FILTERS FORMER	WILMINGTON	NEW CASTLE	1488	BF
SUMMIT LANDFILL	MIDDLETOWN	NEW CASTLE	0074	HSCA
SUNDAY BREAKFAST MISSION	WILMINGTON	NEW CASTLE	1083	BF
SUNOCO TANK FARM FORMER	CLAYMONT	NEW CASTLE	1238	HSCA
SUPER SODA CENTER MILFORD FORMER	MILFORD	KENT	1583	BF
SUSSEX CO LANDFILL #1 BRIDGE- VILLE	BRIDGEVILLE	SUSSEX	0122	HSCA
SUSSEX CO LANDFILL #2 STOCKLEY	MILLSBORO	SUSSEX	0129	HSCA

**ATTACHMENT B (CONTINUED):
SITE REPORTING TABLES BY PHASE/STATUS**

**Table 9
Long Term Stewardship
As of Fiscal Year, Ending 2022**

SITE NAME	CITY	COUNTY	DE #	PROGRAM
SUSSEX CO LANDFILL #3 ANGOLA	ANGOLA	SUSSEX	0130	HSCA
SUSSEX CO LANDFILL #4 ANDERSON	LINCOLN	SUSSEX	0106	HSCA
SUSSEX CO LANDFILL #6 OMAR	OMAR	SUSSEX	0123	HSCA
SUSSEX CO LANDFILL LAUREL #5	LAUREL	SUSSEX	0013	HSCA
SUSSEX LUMBER	LEWES	SUSSEX	0118	VCP
SUSSEX MATERIALS	LINCOLN	SUSSEX	1342	BF
TACO BELL - CONCORD PIKE	WILMINGTON	NEW CASTLE	1439	VCP
TAKE A BREAK FORMER	WILMINGTON	NEW CASTLE	1579	BF
THE FALLS	WILMINGTON	NEW CASTLE	1695	BF
TRAILS & PATHWAYS GEORGETOWN/ LEWES	LEWES	SUSSEX	1546	HSCA
TRAIL & PATHWAYS NEWARK AND POMEROY TRAIL	NEWARK	NEW CASTLE	1608	HSCA
TYBOOTS CORNER LANDFILL	NEW CASTLE	NEW CASTLE	0028	NPL
UP THE CREEK RESTURANT & MARI- NA	WILMINGTON	NEW CASTLE	1384	BF
WILDCAT LANDFILL	DOVER	KENT	0011	NPL
WILEY CORK	WILMINGTON	NEW CASTLE	0324	BF
WILMINGTON COAL GAS - SOUTHERN SECTION	WILMINGTON	NEW CASTLE	0114	VCP
WILMINGTON COAL GAS WEST	WILMINGTON	NEW CASTLE	1043	HSCA
WILMINGTON PUBLIC WORKS YARD	WILMINGTON	NEW CASTLE	1090	VCP
WILMINGTON RIVERFRONT WEST GW PROJECT	WILMINGTON	NEW CASTLE	1249	HSCA
WILMINGTON ROLLING MILL	WILMINGTON	NEW CASTLE	1198	BF
WILMINGTON TRANSIT CENTER	WILMINGTON	NEW CASTLE	1091	HSCA
WILSON STREET	WILMINGTON	NEW CASTLE	1108	VCP
WINGS TO GO FORMERLY	WILMINGTON	NEW CASTLE	1513	BF

ATTACHMENT C:

GLOSSARY OF TERMS & ABBREVIATIONS

Aboveground Storage Tank (AST)

A single aboveground containment vessel having a capacity of greater than 250 gallons and currently or previously having contained regulated substances on or after January 1, 1992. The term includes all ancillary aboveground pipes and dispensing systems. Within this definition, the word “vessel” includes any container that can be partially visually inspected, from the exterior, in an underground area.

Brownfield Preliminary Assessment (BPA)

A baseline environmental investigation conducted on underutilized potentially contaminated property/properties to characterize the site in order to encourage redevelopment of the property.

Brownfield Development Program (BDP)

The remedial process established by the Department under 7 Del. Laws, c. 91, Subchapter II.

Brownfield Investigation (BFI)

An evaluation under the brownfields development program which includes the assessment of an actual, threatened, or perceived release of a hazardous substance at a facility to determine the nature, extent, and impact of the actual, threatened, or perceived release, and the evaluation of the feasibility of the proposed development plan to serve as all or a portion of the remedial action.

Certification of Completion of Remedy (COCR)

Document issued by the Department stating the remedial action has been completed or is operational to the satisfaction of the Department and any of the ongoing compliance requirements for the site.

DWHS or Division

The Department of Natural Resources and Environmental Control Division of Waste and Hazardous Substances.

DNREC or Department

The Department of Natural Resources and Environmental Control.

Emergency Response and Strategic Services (ERSS)

An operating section of DNREC's Division of Waste and Hazardous Substances responsible for boiler and pressure vessels, emergency response actions, as well as oversight of all support operations (i.e., legal, financial, outreach and other support services)

Facility Evaluation (FE)

An investigation to identify a release of a hazardous substance and generate data to perform an initial screening and make a decision regarding future action at the facility.

Facility Identification

The process of identifying facilities with a release of hazardous substances, based on complaints from the public, reports from other agencies or parties, etc.

Feasibility Study (FS)

An evaluation to identify the potential remedial alternatives that are applicable to satisfy the remedial action objectives for the facility.

Final Plan of Remedial Action (FP)

The Department's written determination of the appropriate remedial action under HSCA at a facility for the current or anticipated land use to protect public health, welfare, and the environment.

FIRST Fund

A fund appropriated and adopted in FY2000 and created for the purpose of addressing the investigation, removal and remediation of orphaned and abandoned underground storage tank systems in the state.

Hazardous Substance

(a) any hazardous waste as defined in 7 Del. Laws, c. 63 or any hazardous waste designated by regulation promulgated pursuant to 7 Del. Laws, c. 63; (b) any hazardous substance as defined in CERCLA or regulations promulgated pursuant thereto; (c) any substance determined by the Secretary through regulation to present a risk to the public health or welfare or the environment if released into the environment; (d) any substance included in the HSCA screening level table that will be updated semiannually; or (e) petroleum, including crude oil or any fraction thereof; however, any release of hazardous substances from a storage tank which is regulated by 7 Del. Laws, c. 74 or 7 Del. Laws, c. 74A or regulations promulgated pursuant thereto is not subject to these regulations except as provided for in Section 1.2. Notwithstanding the Department's determination under Section 1.2 of these regulations, any release of petroleum, including crude oil or any fraction thereof, is eligible for funding under HSCA.

HSCA

The Delaware Hazardous Substance Cleanup Act first enacted in July of 1990, and later amended. It is also known as the state superfund program.

HSCA Fund

A fund created for the purpose of addressing hazardous substance release sites in Delaware. The fund consists of revenues from a 0.9% tax on gross receipts from petroleum products, penalty monies, and monies obtained through recovery of costs from potentially responsible parties.

Identification and Notification of Potentially Responsible Parties (PRPs)/PRP Search

The process whereby the Department will initiate actions to identify and notify the PRPs associated with the facility where a release or a threat of release has been confirmed.

Initial Investigation

A process for identifying a suspected release or imminent threat of release. It includes review of existing information, facility visits, interviews with facility owner or operator and adjacent property owners, or other persons with knowledge of the facility.

Interim Action (IA)

The containment, cleanup, or removal of a release or imminent threat of release of hazardous substances from a facility, or the taking of other actions, prior to the selection of a remedial action, as may be necessary to prevent, minimize, or mitigate threats to public health, welfare, or the environment.

Long Term Stewardship (LTS)

The long-term management of contaminated environmental media at sites that is necessary to protect human health and the environment. Long-term stewardship generally includes the establishment and maintenance of physical and legal controls, implementation entities, authorities, accountability mechanisms, information, and data management systems, and/or resources that are necessary to ensure that these sites remain protective of public health, welfare, or the environment.

No Further Action (NFA)

Based on the information available following an initial investigation or facility evaluation, the Department determines that: (a) there has been no release or there is no imminent threat of release; (b) a release has occurred which does not pose a threat to public health or welfare or the environment; or (c) action by another authority is appropriate.

Natural Resources Damage Assessment (NRDA)

The process of collecting, compiling, and analyzing information, statistics, or data to determine natural resource damages.

Operable Unit (OU)

A portion of a superfund site that is addressed separately from the rest of the site to allow for easier management or a timelier response.

Operation and Maintenance (O&M)

The activities required by the Department to provide for continued effectiveness and integrity of a remedial action.

Potentially Responsible Parties (PRPs)

Any person identified pursuant to 7 Del. Laws, c. 91, § 9105 (a)(1) through (6) as a person liable with respect to a facility.

PRP Lead

This refers to a site where the PRP(s) performs investigative and remedial actions and bears the costs of those activities.

Proposed Plan (PP)

A written plan, issued by the Department for public comment, describing the appropriate remedial action under HSCA at a facility for the current or anticipated land use to protect public health, welfare, or the environment.

Remediation

Any action, response, or expenditure consistent with the purposes of HSCA, or any regulations or guidance developed pursuant thereto to identify, minimize or eliminate any imminent threat posed by any hazardous substances to public health or welfare or the environment including preparation of any plans, conducting of any studies and any investigative, oversight of remedy or monitoring activities with respect to any release or imminent threat of release of a hazardous substance and any health assessments, risk assessments, health effect studies or natural resource damage assessments conducted in order to determine the risk or potential risk to public health or welfare or the environment.

Remedial Action (RA)

The containment, contaminant mass or toxicity reduction, isolation, treatment, removal, cleanup, or monitoring of hazardous substances released into the environment, or the taking of such other actions, including natural resource damage restoration and replacement, as may be necessary to prevent, minimize, or mitigate harm or risk of harm to the public health or welfare or the environment which may result from a release or an imminent threat of a release of hazardous substances.

Remedial Design (RD)

The preparation of a plan and specifications necessary for implementation of a remediation action.

Remedial Investigation (RI)

An evaluation of a release or imminent threat of release of a hazardous substance at a facility to determine the nature, extent, and impact of the release and the collection of data necessary to conduct a feasibility study of remedial alternatives.

Site Inspection (SI)

A baseline environmental investigation conducted on underutilized potentially contaminated property/ properties to characterize the site in order to encourage redevelopment of the property.

Remediation Section (RS)

An operating section of DNREC's Division of Waste and Hazardous Substances responsible for investigating, overseeing/monitoring and/or performing remediation of uncontrolled hazardous/toxic waste sites in accordance with the Delaware Hazardous Substance Cleanup Act and Delaware's Regulations Governing Hazardous Substance Cleanup. It also is responsible for regulating, investigating, monitoring and/or permitting Aboveground Storage Tanks, Underground Storage Tanks, Stage I and II Vapor Recovery Systems, as well as remediation actions.

State/Fund Lead

This refers to a site where a PRP: (1) cannot be identified; (2) is unwilling to perform investigative or re- medial activities; or (3) is unable to pay for cleanup. In such instances, the Department may carry out the investigative and remedial activities at the site using monies from the HSCA fund.

Underground Storage Tanks (USTs)

Underground storage tank systems.

Voluntary Cleanup Program (VCP)

The remedial process established by the Department under 7 Del. Laws, c. 91, into which a party voluntarily enters, provided the application is approved by the Department, for the purpose of conducting a remedy at a facility.