

**Center for Applied Demography & Survey Research**  
**University of Delaware**

---

**Economic Impact on Delaware's Economy:  
The Brownfield Program 2025**

by  
**David Racca**  
**Simon Condliffe**

**February 11, 2026**

**[www.cadsr.udel.edu](http://www.cadsr.udel.edu)**

The University of Delaware is committed to assuring equal opportunity to all persons and does not discriminate on the basis of race, color, gender, religion, ancestry, national origin, sexual preference, veteran status, age, or disability in its educational programs, activities, admissions, or employment practices as required by Title IX of the Educational Amendments of 1972, Title VI of the Civil Rights Act of 1964, the Rehabilitation Act of 1973, the Americans with Disabilities Act, other applicable statutes, and University policy. Inquiries concerning these statutes and information regarding campus accessibility and Title VI should be referred to the Affirmative Action Officer, 305 Hullihen Hall, 302/831-2835 (voice), 302/831-4552(TDD).

## TABLE OF CONTENTS

	<b>Page</b>
List of Tables and Figures .....	2
Summary .....	4
Introduction .....	4
Data and Software .....	6
Development of ROI For Land Development.....	9
Tax Payments .....	12
Employment and Brownfields.....	15
Comments .....	19
Conclusions .....	20
Comments on Selected Brownfield Sites... ..	21
Surveying Brownfield Owners/Developers.....	27
Appendix .....	29
Summary of Returns from the 2015 Survey.....	34
Tax Parcel Listing for Brownfields under Study (historical 2002 through 2024) .....	37

## LIST OF TABLES AND FIGURES

	<b>Page</b>
<b>Table 1</b> Return on Investment (ROI) based on Assessed Value. Change in Assessment between Certification and 2023.....	9
<b>Table 2</b> Return on Investment (ROI) based on Assessed Value. Change in Assessment between CORC and 2023 .....	10
<b>Table 3</b> Return on Investment (ROI) based on Assessed Value. Amount Spent by Brownfield Program and HSCA. Change in Assessment between Certification and 2023. ....	10
<b>Table 4</b> Return on Investment (ROI) based on Assessed Value. Amount Spent by Brownfield Program and HSCA. Change in Assessment between CORC and 2023. ....	10
<b>Table 5</b> Historic assessment payments for Kent, New Castle and Sussex County Brownfields. ....	13
<b>Table 6</b> Employment and Wages in Brownfield Sites 2022.....	15
<b>Table 7</b> Differences in Employment and Wages 2022 to COCR date.....	15
<b>Table 8</b> Modeling the Impact of the Change in Employment at Brownfield Sites from COCR date to 2022.....	16
<b>Table 9</b> Employment Impacts by Industry Sector.....	18

Figure 1	Distribution of Assessed Value 2025.....	11
Figure 2	Distribution of Difference in Assessed Value in 2023 from CORC .....	11
Figure 3	Tax Assessment Payments 2024 .....	14
Figure 4	Difference in Assessment Payments CORC Year to 2024.....	14
Figure 5	DOL Employment April 2022 by Site.....	17
Figure 6	Year 2022 April Employment Minus CORC Year by Site DOL Employment 2 <sup>nd</sup> Quarter... .....	17
Figure 7	Star Campus, Former Chrysler Plant DE-0105.....	21
Figure 8	Justison Landing Project DE-1377 .....	22
Figure 9	Fort Dupont Development Site.....	23
Figure 10	Crozier Center Property DE-1428. ....	24
Figure 11	Former Jackson Pit Property DE-0149. ....	25
Figure 12	DE-1610 94 Parcels to Be Developed. ....	26
Figure 13	DE-1628 92 Parcels. ....	26

# Summary

Those Brownfield Sites where remediation was completed between the years 2015 and 2022 were selected for a review to examine change in land value, property tax revenues, and employment as compared with the year of Certification of Completion of Remedy (COCR) where remediation of a site was completed. This is a data intensive project where economic indicators are used to examine condition and value in the years following remediation. As a group, property assessment rose significantly. Of the 113 sites selected, 7 are in Sussex County, 15 in Kent County and 91 are in New Castle County. This group of sites show advances in property values, employment, and tax revenues. From a property value perspective Return On Investment (ROI) was 9.2. from completion to 2023. When looking at property values from beginning of remediation (certification), the ROI was estimated at 19.3. Additional employment at the Brownfield sites were modeled as 5155 new jobs within the state. Average Annual Wages for the sites are up by \$12,954. Additional State taxes resulting from that employment could be conservatively estimated at roughly \$2.2million each year and forward. Additional tax revenues from employment are estimated to have accumulated for at least a few years over \$2million each year preceding 2024. Comparing property taxes paid for properties as a group, properties in Brownfield sites in 2024 were paying an addition of over \$2million from their COCR year, and that level of additional tax revenue is expected to continue in the next years. The accumulation of additional tax revenues from 2010 to 2024 totals roughly \$16million when viewed from Certification date. For this group of complete sites, the amount spent in the Brownfield program was \$28,431,135, and at this time tax revenues from wages and property tax are close to or exceed this figure, and property values as a group are very significantly higher. There are several sites that drive the numbers and some of these are reviewed.

# Introduction

The Center for Applied Demography & Survey Research (CADSR) at the University of Delaware conducted this research to measure the economic impact of Delaware's Brownfield Development Program (BDP). The research was commissioned by the Delaware Department of Natural Resources and Environmental Control. The Center conducted the study independently and the authors are solely responsible for its design and execution.

Delaware defines brownfields as “real property, the expansion, redevelopment, or reuse of which may be hindered by the reasonably held belief that the real property may be environmentally contaminated.”<sup>1</sup> As a result, properties that could generate economic and social benefits remain

---

<sup>1</sup>7 Del. C. §9103(3).

undeveloped. The BDP “codifies the prospective purchaser concept and provides liability waivers and financial assistance to brownfield developers.”<sup>2</sup> The BDP thus encourages the remediation and private development on these sites with the assistance of the state.

The objectives of this research were several.

- 1) Measure the change, if any, in the economic value of each certified and remediated site as of 2022.
- 2) Measure any change in employment and wages that occurred on the site.
- 3) Ascertain the impact of the sites collectively on Delaware's economy.
- 4) Estimate the impact on the tax base and the overall return on investment.

BDP thus encourages the remediation and private development on these sites with the assistance of the state.

This study looks at 3 economic indicators: the value of the land and improvements to the brownfield site as judged by the assessed value, the amount of assessment taxes that were received from sites, and the employment and associated wages and tax revenues at the sites. We compare those to when the site was either certified or when remediation was complete. Economic modeling estimates the impacts of added employment, as more employment induces other employment and services within the state. A section discussing specific sites describes what is expected in the future.

---

<sup>2</sup> Delaware's Brownfield Development Program Fact Sheet,  
<http://www.dnrec.delaware.gov/dwhs/SIRB/Pages/Brownfields.aspx>

# Data and Software

## **Brownfield Site Tables**

First step in the process was to develop Brownfield site and tax parcel-based tables. Site records were screened for those sites that had a Certification Of Completion of Remedy (COCR) completed in the 2015 to 2022. About half of these 112 sites were certified in 2015 up to 2022, so a considerable number are in the very early stage of the program. Some sites were active for much longer from 2002 to 2014. A mapping layer of these site boundaries was acquired from DNREC open data sites and reviewed. A site-based table was developed with certification dates, COCR dates, total expenditures, and identification information. A list of the Brownfield sites under study is provided in the Appendix.

## **Historic GIS Tax Parcel Maps**

A tax parcel-based table of properties belonging to Brownfields was created from DNREC records and an examination of historical tax parcel maps. CADSR has a 20-year time-series of digital tax maps for all counties and site boundaries were overlaid on tax maps corresponding to certification data and parcels were tabulated and compared with DNREC documents. Property boundaries within a site often change, some are added, some removed, so the changes were examined through the years up to 2024 to develop a list of all tax parcels that ever were part of a Brownfield site.

## **Tax Assessment Time Series**

CADSR also maintains a more than 25-year tax assessment series for all parcels in Delaware, that includes assessment values, classification, owner, and other information as found in assessment records. This time-series was joined to the Brownfield parcel-based tables.

## **Assessment to Sales Ratio and Dollars Thru Time.**

Until this past year when there was a statewide re-assessment, all historical assessment data is in 1984 dollars. To compare value across multiple years requires estimating changes in value and using an assessment to sales factor to estimate current value. Assessment to sales ratios were taken from "Assessment to Sales Ratio Study for Division III Equalization Funding: FY2023-2024" by Edward Ratledge, October 2024, prepared for the State of Delaware Office of Management and Budget.

## **Department of Labor Employment and Wages**

The Delaware Department of Labor (DOL) provided the number of employees, quarterly wages, and NAICS industrial code for all Delaware establishments paying unemployment insurance since 2001. The latest year that CADSR had for use in this study is 2022. The Delaware DOL data gives the employment, wages, industry, and addresses for most Delaware businesses. In this analysis the 2<sup>nd</sup> quarter employment and wage values for each year were used. In 2022, there were 39,484

records where each record is a reporting business, a few thousand records are duplications in regard to employer, so roughly there were 35,000 records of interest.

### **Geocoded Employment**

To determine what employers were in Brownfield sites the DOL locations were geocoded using Delaware address locators. In 2022, about 32,700 of these had addresses that could be geocoded, and close to 26,000 of these were successfully geocoded. So about 80% of the employers with addresses were located at points in the map, so employment and wage numbers are expected to be higher than what is used in the study. Another issue in geocoding is that some multilocation employers report employment with an address corresponding to an administrative location rather than where the employees actually work. In this study this is notable on the site containing the UD Star campus, where employees are reported as off-site, several blocks away. Site areas were overlaid on geocoded DOL records and identified by Brownfield site. Consistent with previous studies, a 50-meter buffer was generated around site outline to determine employment in the proximity and influence around sites and to address spatial accuracy associated with the geocoding.

### **Historic Assessed Payments**

In this update, rather than modeling tax revenue for Brownfield parcels, actual payments from 2010 to 2024 were tabulated from New Castle County and Kent and Sussex County Records, to provide actual revenue through time.

### **Software and Modeling**

Software used in the analysis is mostly ESRI GIS tools, and statistical software (SPSS).

The REMI PI+ software is a dynamic and structural model of Delaware's economy that is capable of estimating causal relationships and is a leader in the modeling industry. It is a regionalized version of a benchmarked national model. Ten sub-regions, including the three counties in Delaware, Cecil County MD, Harford County MD, Salem County NJ, Delaware and Chester counties in PA (combined), Burlington County NJ, Camden County NJ, and Gloucester County NJ (combined), Bucks County PA, Montgomery County PA, Philadelphia County PA (combined) and the balance of the Delmarva Peninsula are included.

REMI PI+ is a general equilibrium model with feedback. This means that the model describes the entire economy as it changes over time. For example, changes in population, demographics, and wages each influence the labor supply at any moment but are themselves influenced in the future by changes in the labor supply. A second advantage of using a general equilibrium model is it can capture the multiplier effect from other parts of the economy. In a sense, the multiplier effect is the cumulative impact of any single change to the economy. The use of REMI PI+ in this study is to provide estimates on how Brownfield development relates to broader effects in the counties and

regions. Where there are employment and wage gains in the sites, the benefit is not just from the difference in raw employment from one year to the next but also induces jobs in other supporting and neighboring industries across sectors, whether it is for parts, or lunches, or maintenance, or transportation or other areas.

The model is founded on conventional economic assumptions, such as households maximize utility and firms maximize profits. Hundreds of equations have been developed and refined over the last 25 years to describe the economy's structure mathematically. These equations can be organized into five major components: Output and Demand, Labor and Capital Demand, Population and Labor Force, Wages-Prices-Costs, and Market Share REMI PI+ is a general equilibrium model with feedback. This means that the model describes the entire economy as it changes over time.

# Development of ROI for Land Development

Property values as derived from assessment records were examined in relation to Brownfield expenditures to estimate a Return on Investments (ROI) in terms of the change in land and building values of sites in the Brownfield program.

One could look at benefits from the time when remediation is complete, but looking at differences from the time a brownfield site was first certified and entered into the program is also a good view in that sites often see improvement while remediation is in progress. The following tables show the change in assessment between (a) certification and 2023 and (b) Certificate of Completion of Remediation (COCR) date and 2023. The assessment-to-sales ratio for fiscal year 2023 is applied to bring the assessed value to an estimated market value. The value is then divided by the cleanup expenditures to arrive at a return on investment.

Clean up expenditures are in nominal dollars. Information on the timing of the cleanup expenditure would enable those expenditures to be adjusted for inflation. The first panel compares the change in assessment from certification to 2023. The second panel compares the change in assessment from COCR date to 2023. ROI is 19.2 for all properties when making the estimate from certification to 2023, and is 9.2 from COCR, in both cases very favorable. Differences in ROI when comparing counties are attributable to a number of larger projects in New Castle, and small number of brownfield sites in Kent and Sussex where one or a few sites can have a bigger influence on the estimate.

**Table 1: Return on Investment (ROI) based on Assessed Value. Change in Assessment Between Certification and 2023.**

Change in assessment between Certification and 2023		AS Ratio FY 2023	Change in Assessment/AS Ratio	Amount Spent in Clean Up	ROI
<b>Kent</b>	1,463,700	0.238	6,150,000	2,341,865	2.63
<b>New Castle</b>	92,483,999	0.191	484,209,419	24,537,356	19.73
<b>Sussex</b>	2,509,800	0.059	42,538,983	1,551,914	27.41
<b>Delaware</b>	96,457,499	0.176	548,053,972	28,431,135	19.28

Note: Clean Up excludes HSCA money. Clean Up is in nominal dollars.

**Table 2: Return on Investment (ROI) based on Assessed Value. Change in Assessment Between COCR Year and 2023.**

Change in assessment between COCR and 2023		AS Ratio FY 2023	Change in Assessment/AS Ratio	Amount Spent in Clean Up	ROI
Kent	1,337,167	0.238	5,618,349	2,341,865	2.40
New Castle	42,198,000	0.191	220,931,937	24,537,356	9
Sussex	2,675,100	0.059	45,340,678	1,551,914	29.22
Delaware	46,210,267	0.176	262,558,335	28,431,135	9.23

Note: Clean Up excludes HSCA money. Clean Up is in nominal dollars.

There are sometimes other investments of public dollars beyond those of the Brownfields Program. One such case was the provision of HSCA fund of \$14,683,821 spent on Site 1377, the Justison Landing Project, and \$2,223,765 spent on Site 1347, the Speakman Townhomes Project. Because of the magnitude of those public funds, the ROI was also calculated to include HSCA funding as shown in the table below. ROI from certification to 2023 is about 12 for the State and ROI from COCR to 2023 is about 5.8, still both very good returns.

**Table 3: Return on Investment (ROI) based on Assessed Value. Amount Spent by Brownfield Program and HSCA. Change in Assessment Between Certification and 2023.**

Change in assessment between Certification and 2023		AS Ratio FY 2023	Change in Assessment/AS Ratio	Amount Spent in Clean Up	ROI
Kent	1,463,700	0.238	6,150,000	2,341,865	2.63
New Castle	92,483,999	0.191	484,209,419	41,444,943	11.68
Sussex	2,509,800	0.059	42,538,983	1,551,914	27.41
Delaware	96,457,499	0.176	548,053,972	45,338,722	12.09

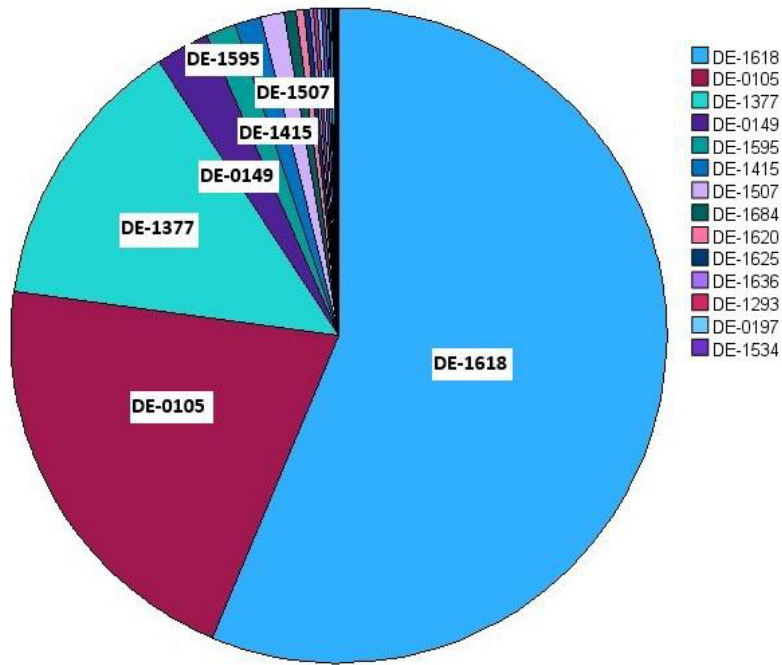
Note: Clean Up includes HSCA money. Clean Up is in nominal dollars.

**Table 4: Return on Investment (ROI) based on Assessed Value. Amount Spent by Brownfield Program and HSCA. Change in Assessment Between COCR Year and 2023.**

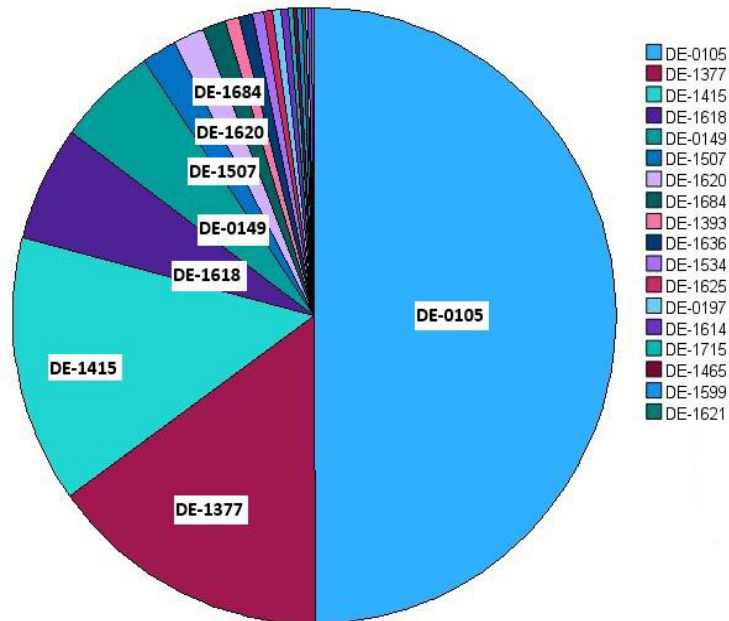
Change in assessment between COCR and 2023		AS Ratio FY 2023	Change in Assessment/AS Ratio	Amount Spent in Clean Up	ROI
Kent	1,337,167	0.238	5,618,349	2,341,865	2.40
New Castle	42,198,000	0.191	220,931,937	41,444,943	5.33
Sussex	2,675,100	0.059	45,340,678	1,551,914	29.22
Delaware	46,210,267	0.176	262,558,335	45,338,722	5.79

Note: Clean Up includes HSCA money. Clean Up is in nominal dollars.

**Figure 1**  
**Distribution of Assessed Value 2025**



**Figure 2**  
**Distribution of Difference in Assessed Value in 2023 from COCR**



# Tax Payments

Tax payments made by parcel provide an actual number of historic tax revenues from brownfield sites.

Payments made in Kent County in 2024 were \$21,662. Payments in New Castle County in 2024 were \$5,930,477. Payments in Sussex County in 2024 were \$124,467. The difference in tax payments between the COCR year and 2024 were: New Castle County \$2,250,153 and Kent County \$12,598 and Sussex County \$85,291. That is an additional over \$2 million tax revenue for 2024 that is expected to continue to be added each year going forward.

This difference in revenues from completion were not only realized in 2024 but some accumulation would be realized for each property in the years between the COCR and 2024. If the differences are accumulated for those years, they sum to: New Castle County approximately \$8.2m (nominal dollars) and Kent County approximately \$8,000 (nominal dollars) and Sussex County approximately \$380,000. Payments were aggregated in nominal dollars. Adjusting for inflation, the additional payments following the COCR date are estimated to be approximately \$9m (2024 dollars).

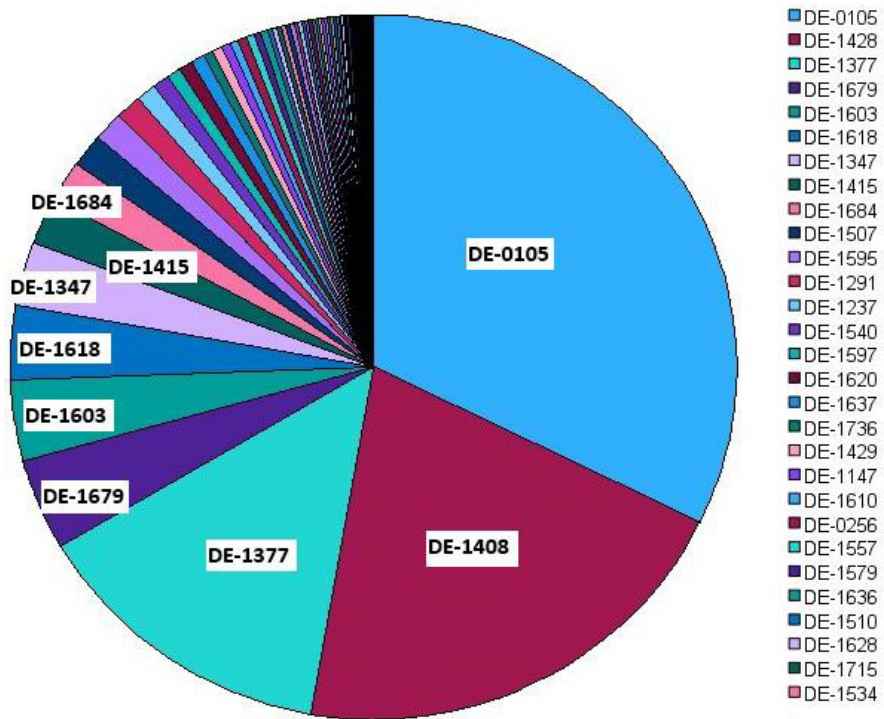
An alternative view could count tax payments from when the properties first became part of the BDP. Some of the sites were certified as early as 2002. Changes in assessment and tax payments are often seen in years before completion, so additional tax revenues were accumulating in those periods as well. Tax payments were only available going back to 2010 but summing up this difference for New Castle and Kent and Sussex in a similar way as the accumulation between COCR date and 2024, estimates about \$16,800,000 actual revenue through the period of 2010 to 2024.

A table summarizing tax payments is below.

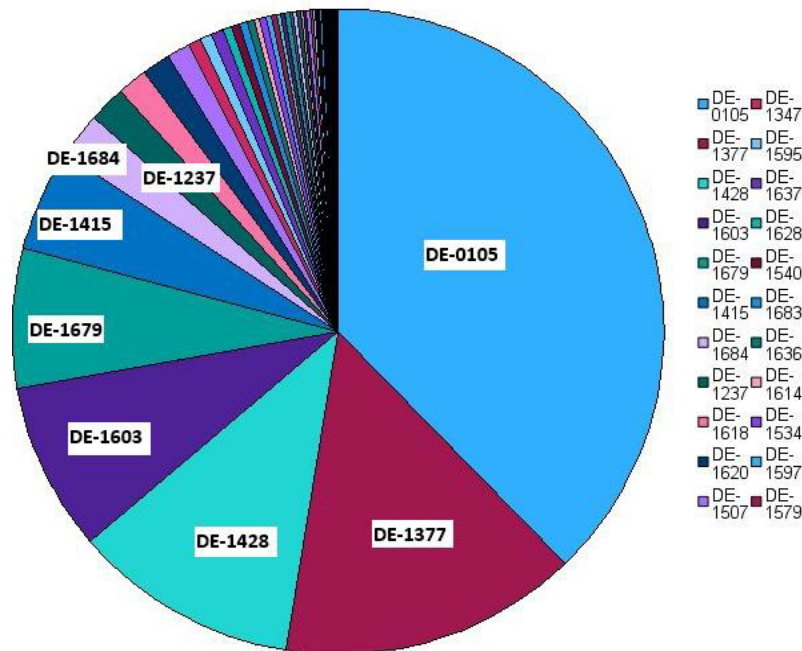
**Table 5: Historic assessment payments for Kent, New Castle and Sussex County Brownfields.**

New Castle County Payments 2024	\$5,930,477
NCC Payments COCR year	\$3,680,324
Difference NCC Payment COCR vs 2024	\$2,250,153
Kent County Payments 2024	\$21,662
Kent County COCR	\$28,964
Difference Kent Payment COCR vs 2024	12,598
Sussex County Payments 2024	\$124,467
Sussex County Payments COCR	\$39,176
Difference Sussex Payment CORC vs 2024	\$85,291
Sussex County Payments Accumulated 2010 to 2024	\$568,846
Sussex Payments Accumulated from COCR to 2024	\$381,848
Delaware Payments Accumulated from COCR to 2024	\$8,723,574
Delaware Payments Accumulated from 2010 to 2024	\$16,800,000
Delaware Payments Accumulated from Certification to 2024	Estimated greater than \$20 million

**Figure 3**  
**Tax Assessment Payments 2024**



**Figure 4**  
**Difference in Assessment Payments COCR Year to 2024**



## Employment and Brownfields

Employment impact is modeled using the change in employment by industry at the brownfield sites from their COCR date to April 2022 (the latest employment data available at the time of writing). The change in employment could be positive, zero, or negative for a particular industry as some firms may grow while others may recede. The table below summarizes the employment and wages estimates in 2022. The Average Annual Wages is equal to the wages divided by number of people employed and is a grouped effect of the mix of the various sectors and earnings. The difference of employment in 2022 and at year of completion of sites was calculated using a time series of employment by year.

**Table 6: Employment and Wages in Brownfield Sites 2022.**

Brownfield employment and wages in April 2022 by county per Department of Labor and University Delaware analyses. All in nominal dollars.

	<b>New Castle</b>	<b>Kent</b>	<b>Sussex</b>	<b>Delaware</b>
<b>Employment (2022)</b>	5,295	430	128	5,853
<b>Wages (2022)</b>	76,061,809	4,334,871	1,279,998	81,676,678

**Table 7: Differences in Employment and Wages 2022 to COCR date.**

	<b>New Castle</b>	<b>Kent</b>	<b>Sussex</b>	<b>Delaware</b>
<b>Employment Change from COCR date</b>	2,284	108	57	2,449
<b>Wages from COCR date</b>	43,522,963	1,313,595	361,831	45,198,389
<b>Average Annual Wages (\$) Change from COCR date</b>	14,233	2,793	-11,728	12,954

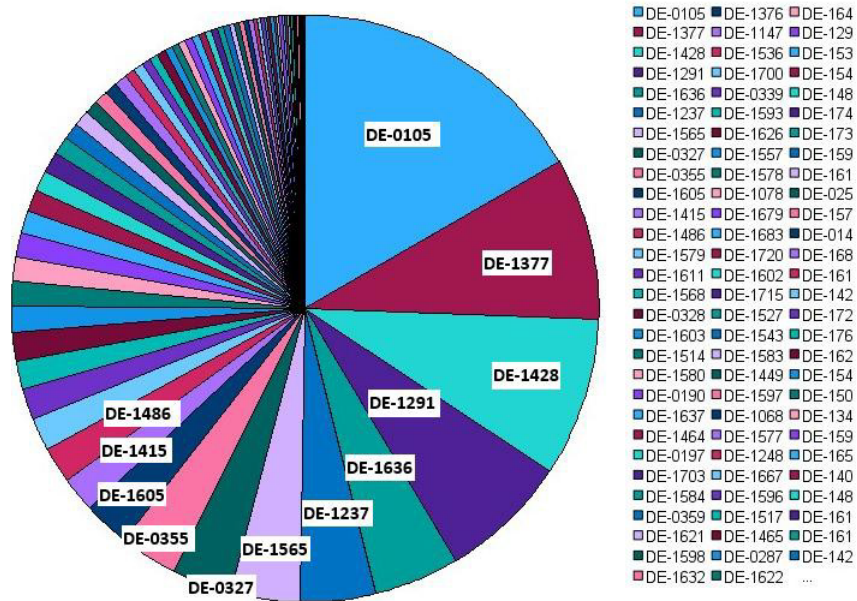
Above is the raw number from subtracting COCR years employment from 2022 employment in the DOL files. The economic impact of that change in employment is modeled using the REMI software. The change in brownfield employment is input by industry and by county to estimate the total impact of this employment change on the broader economy. The change in employment at brownfield sites spurs additional employment in the state through indirect and induced effects, and that 2,449 job growth is estimated to support 5,155 growth in employment and wages. An additional benefit is the increased tax revenues. Assuming a conservative 5% tax rate on raw \$45.2 million change of wages would be a yearly added tax revenue of \$2.26 million.

**Table 8: Modeling the Impact of the Change in Employment at Brownfield Sites from COCR date to 2022**

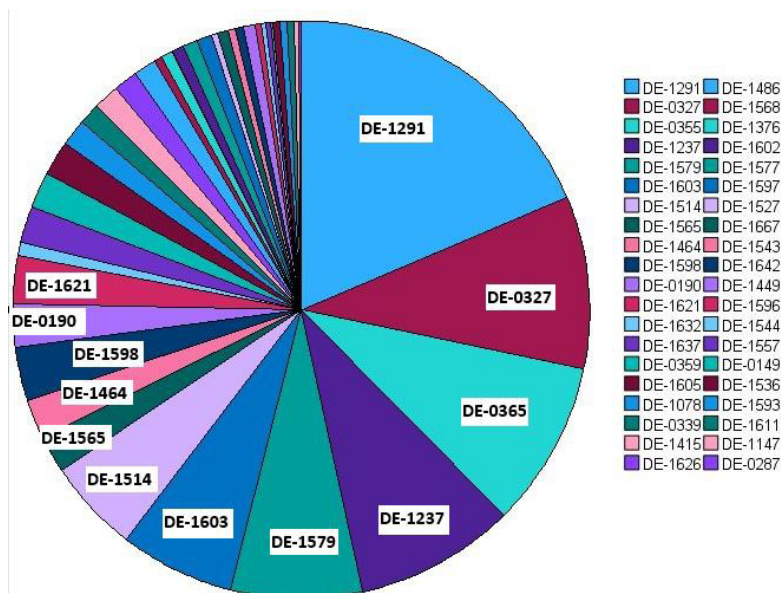
Category	Units	New Castle	Kent	Sussex	Delaware
Total Employment	Thousands (Jobs)	4.759	0.251	0.145	5.155
Gross Domestic Product	Billions of Fixed (2025) Dollars	0.858	0.03	0.019	0.907
Output	Billions of Fixed (2025) Dollars	1.452	0.062	0.033	1.548
Personal Income	Billions of Current Dollars	0.284	0.021	0.012	0.317

Employment change model results are above. A further possibility is to adjust the change of brownfield employment by the expected underlying growth in the county economies. That is, the underlying industry county growth was subtracted from the brownfield sites' growth to derive net growth. This net growth's impact was then modeled. The results, which do not differ significantly from our original results, are included in the appendix.

**Figure 5**  
**DOL Employment April 2022 by Site**



**Figure 6**  
**Year 2022 April Employment Minus COCR Year by Site**  
**DOL Employment 2<sup>nd</sup> Quarter**



Below are modeled impacts by industry.

**Table 9: Employment Impacts by Industry.**

Industry	New Castle	Kent	Sussex	Delaware
All Industries	4,759	251	145	5,155
Forestry, fishing, and hunting	1	1	-	1
Mining	-	-	-	1
Utilities	10	-	-	10
Construction	756	23	20	798
Manufacturing	444	39	5	488
Wholesale trade	166	4	1	171
Retail trade	623	21	10	655
Transportation and warehousing	138	4	2	144
Information	81	-	14	96
Finance and insurance	407	1	1	409
Real estate and rental and leasing	396	9	12	418
Professional, scientific, and technical services	299	19	9	327
Management of companies and enterprises	2	-	-	2
Administrative, support, waste management, and remediation services	273	10	9	293
Educational services; private	1	(6)	-	(4)
Health care and social assistance	563	33	1	598
Arts, entertainment, and recreation	82	2	2	86
Accommodation and food services	166	52	52	270
Other services (except public administration)	172	15	5	192
State and Local Government	179	22	-	200
Federal Civilian	-	-	-	-
Federal Military	-	-	-	-
Farm	-	-	-	-

## Comments

Assessed values have two important limitations. First, assessments ignore the environmental hazard and capital depreciation. Thus, remediation by itself will not change an assessment even though market value will change. This also implies that the initial assessment overstates market value, since brownfields are not in good condition. The change in assessed value is therefore a conservative estimate of the change in property value.

Spatially locating employment from available Department of Labor records is expected to miss some employment in brownfields either because of addressing issues or because employment is reported at an off site administrative location.

Brownfield development is expected to affect employment and wages in neighboring businesses. How much brownfields influence nearby businesses is unclear. The impact can be either negative prior to remediation or positive after remediation. Considering this uncertainty, the report only measures what changes occurred in the immediate area surrounding brownfields. How much of this activity can be directly or indirectly attributable to brownfield development remains an open question. Although in some cases it is quite apparent that the change was highly correlated with the brownfield redevelopment, in others the result is less clear cut.

The analysis is primarily a description of activity. It does not show that the program *caused* these changes. Causation is a difficult issue in the social sciences and requires clarification.

Most of the brownfield sites are within Office of State Planning State Strategies highest priority areas. So, sites are being remediated and developed in line with preferred development areas.

## Conclusions

Those Brownfield Sites where remediation was completed between the years 2015 and 2022 were selected for a review to examine land value, tax revenues, and employment as compared between 2023 and the year where remediation of a site was completed (COCR). As a group, property assessment rose significantly. From a property value perspective, where assessed values for the group rose, Return On Investment (ROI) estimates depend on the range of time examined (from COCR date or Certification date) and what remediation costs were considered. Return on Investment (ROI) measured by COCR date is estimated at 9.2 (HSCA costs excluded) and 5.8 (HSCA costs included). ROI estimated by Certification date is 19.3 (HSCA costs excluded) and 12.1 (HSCA costs included). Six or seven larger sites have the most influence on property values through time and the ROI estimation. Just over 5,155 new jobs are modeled as added on sites and within the counties as determined from COCR date. That job growth estimate is expected to be low as some jobs are not located with available data. Average Annual Wages for the sites are up by \$12,954. Additional State taxes resulting from that employment could be conservatively estimated at roughly \$2.2million each year and continue going forward.

Comparing property taxes paid for properties as a group, properties in Brownfield sites in 2024 were paying an additional \$2million from their COCR year, and that level of additional tax revenue is expected to continue into future years. Additional property tax revenues are estimated to have accumulated for at least a few years over \$2million each year preceding 2024. The accumulation of additional tax revenues from 2010 to 2024 as examined from Certification date, is a total of roughly \$16million.

For this group of completed sites, the amount spent in the Brownfield program was \$28,431,135. From the estimated tax revenues from additional employment and views of actual assessment taxes, amounts already received by the State are close to or exceeding what was spent, and property values have risen dramatically. This study focused on a relatively short time frame of properties completed between 2015 and 2022. In years after 2023 there is strong evidence of much greater benefits. The Star Campus has continued large amounts of building and is establishing a large health sciences park with a great deal of private investment and employment. The Fort Delaware Redevelopment project is expected to have new development. A few brownfield sites are adding 50 to 100 residential lots for single family development.

# Comments on Selected Brownfield Sites

Several brownfield sites stand out, and a few are mentioned below. Further study could be conducted to estimate future outlook.

## **Star Campus, Former Chrysler Plant DE-0105**

With an over \$24 Million difference in 2023 assessment value compared to the COCR year (2019), this site leads the group in terms of benefits. It has the second highest assessment at over \$266million (2025 reassessed) the highest employment as listed in the DOL files at 1,000. This employment is expected to be understated as it does not include University of Delaware as it is one of those employers that reports all employees from a central administration location (Chapel Street) rather than the place of employment. So, we know UD has a very large presence there, which is marked for major development of UD Health Sciences. It is “Envisioned to become a center of innovation, focused on leading research in areas such as health science, cybersecurity and alternative energy, the STAR Campus will provide educational and professional opportunities for UD students while fueling job and economic growth within the state.” [UDMessenger - STAR campus](#) Building and new employment continues to be added.

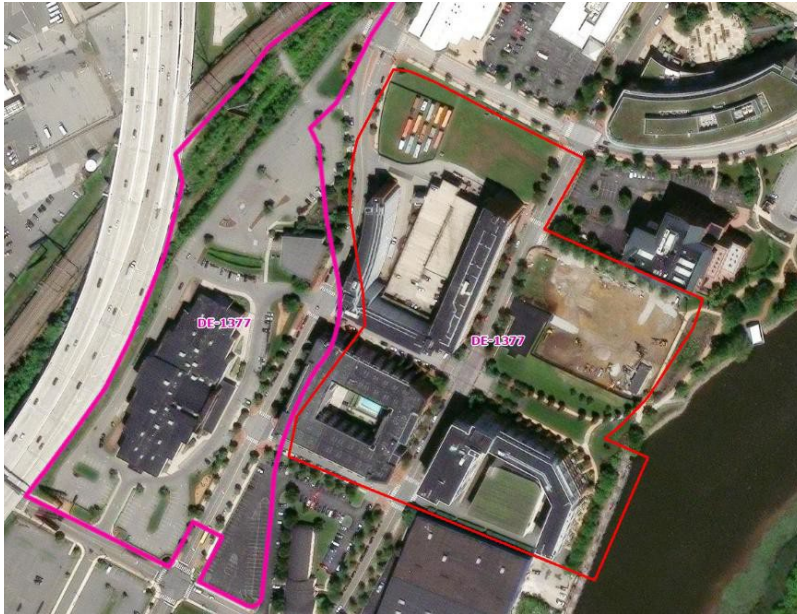
***Figure 7 Star Campus, Former Chrysler Plant DE-0105***



**Justison Landing Project DE-1377**

Justison Landing Project area has the 2<sup>nd</sup> highest assessment at \$174 million and the 2<sup>nd</sup> highest employment in 2022 at 540. It includes extensive multiunit housing and major Wilmington Waterfront Attractions.

*Figure 8 Justison Landing Project DE-1377*



**Fort Dupont Redevelopment DE 1618**

Fort Dupont Redevelopment site has the highest assessment at \$721million and the 2<sup>nd</sup> highest employment in 2022 at 540. The site includes 106 single family sites. The parcel that contains the Governor Bacon Center and larger buildings, is assessed at \$646 million. Additional development is expected.

*Figure 9 Fort Dupont Redevelopment Site*



**Crozier Center Property DE-1428**

\$97 Million assessed value, 3<sup>rd</sup> highest employment at 513.

*Figure 10 Crozier Center Property DE-1428*



**Former Jackson Pit Property DE-0149**

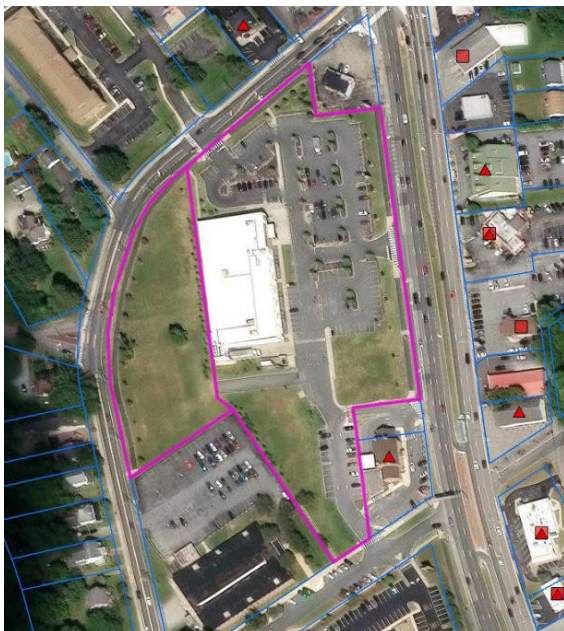
Assessed value of \$34 million, \$2.6 million increase since COCR. Location of Coastal Tide apartment complex.

*Figure 11 Former Jackson Pit Property DE-0149*



**DE-1642 Lidl Property**

The largest project in Kent County. Assessed in 2025 at \$3.5 million.



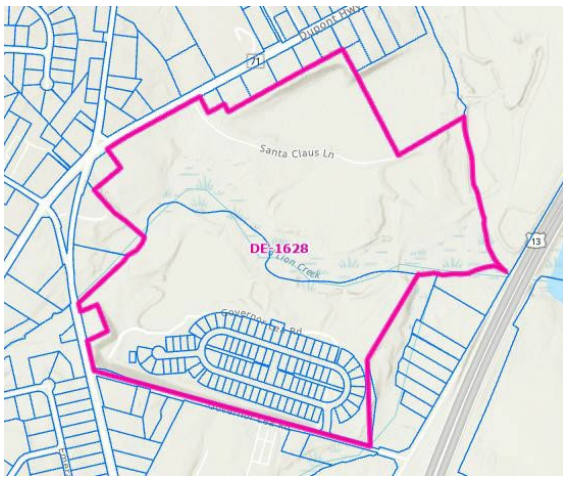
**DE-1610 and DE-1628**

Site DE-1610 has 94 single family lots to be developed and DE-1628 have 92 SF lots.

***Figure 12 DE-1610 94 Parcels to Be Developed***



***Figure 13 DE-1628 92 Parcels to be developed***



# Surveying Brownfield Owners/Developer

The primary objective of the survey was to collect qualitative and quantitative data in the following three areas:

- 1) general purpose of the investment
- 2) satisfaction with the Brownfield Program
- 3) additional investment generated beyond that provided by the Brownfield Program grant.

The survey procedure went as follows:

- first mailing contacted 30 businesses
- second mailing contacted an additional 30 businesses
- follow-up contact by email to 27 of the businesses that email addresses were found
- issues with bad/outdated addresses (22 of the 60 were by post office)
- total returns: 5

Even with follow-up content the response rate was low. Better results would be expected with updated addresses and contacts. Perhaps, future surveys should work with DNREC, and phone surveys of owners would, perhaps, achieve better results. Results from the 2015 survey that included 61 respondents are included in the appendix of this report.

Results were:

- All were owners of the identified properties in 2024.
- 60% envisioned commercial redevelopment, and 40% envisioned residential redevelopment.
- 60% were new construction, and 40% were rehabbed.
- 60% were an investment property, while 40% of the owners were the end users.
- Top reasons why a Brownfield site was chosen:
  - Location driven (4 responses)
  - Price of the property (3 responses)
  - Zoning (2 responses)
  - Remediation assistance (2 responses)
  - Infrastructure (1 response)
  - Liability waiver (1 response)
- 80% did not apply for a grant from DEDO.
- One owner did apply for a grant, and the amount was \$1,000,000.

- All owners responded that the mitigation required was on target when comparing their original expectations.
- Overall rating of DNREC – all excellent (2 responses) or good (3 responses).
- Overall rating of remediation contractors – all excellent (4 responses) or good (1 response).
- 80% would not have developed the same property if it did not qualify for Brownfields.
- Most would have developed a different property (4 “yes” and 1 “maybe”).
- All owners responded “very likely” to participate in the Brownfield Program again.
- All owners received a DNREC grant for the development.
- Approximate amount spent: \$50,000; \$85,200; \$100,000; \$200,000 (1 response \$0).

# APPENDIX

## Brownfield Sites in the Analysis

ProgramID	Site_Name	Cert_Date	COCRDate	County	Amt.Spent	Assess2025
DE-0105	Former Chrysler Newark Plant Site	10-Sep-2009	26-Jun-2019	New Castle	1000000	266600100
DE-0149	Former Jackson Pit Property	29-Jan-2009	08-Nov-2019	Sussex	240644	34097300
DE-0190	Lewes Coal Gas Site	26-Jun-2015	23-Aug-2018	Sussex	95653	4108300
DE-0197	Harper Thiel	17-Sep-2002	13-Sep-2018	New Castle	317083	2568500
DE-0256	Homalite Inc. Site	19-Apr-2017	23-May-2018	New Castle	69564	1750500
DE-0287	Former Peninsula Plating Facility Property	31-Oct-2006	19-Feb-2019	Sussex	129522	115700
DE-0327	Bell Funeral Home Property	20-Jun-2006	13-Mar-2017	New Castle	179948	3097300
DE-0328	12th and Brandywine Streets Garden Projec...	26-Jun-2006	13-Mar-2017	New Castle	11724	1129400
DE-0339	Kalmar Nyckel Challenge	24-Apr-2008	14-Dec-2015	New Castle	565774	5333500
DE-0355	St. PatrickGÇÖs House Site	12-Apr-2012	11-Jan-2016	New Castle	176431	4642100
DE-0359	333 South Governors Avenue Site	23-Oct-2012	20-Jun-2016	Kent	90470	208500
DE-1068	DE Compressed Steel	15-Apr-2003	20-Jan-2015	New Castle	6701	734300
DE-1078	Former Connections CSP, Inc. Site	23-Mar-2018	12-Feb-2020	New Castle	464183	734300
DE-1131	Former American Scrap & Waste Site	29-Oct-2009	13-Aug-2018	New Castle	178504	415100
DE-1147	Peninsula Park	19-Nov-2002	13-Mar-2019	New Castle	5700	4675200
DE-1153	Curtis Paper Company	19-Sep-2008	23-Apr-2019	New Castle	1015479	3192000
DE-1175	Merkin Auto Site	22-Jun-2009	12-Apr-2016	New Castle	225000	2020000
DE-1200	Former Holly Oak Substation Site	27-Jan-2017	20-May-2019	New Castle	28952	576800
DE-1237	Riverfront Office Building	17-Sep-2002	15-Aug-2018	New Castle	1630	14937000
DE-1248	415-427 North Tatnall Street Site	15-Jun-2022	13-Oct-2016	New Castle	61899	1853600
DE-1291	320 GÇ£AGÇ¥ Street	25-Aug-2003	10-Mar-2020	New Castle	52042	14429900
DE-1293	Christina Marina	22-Sep-2004	28-Oct-2019	New Castle	707241	2606000
DE-1334	Former Chesapeake Supply	15-Dec-2006	25-Jun-2018	Kent	326396	295100
DE-1347	Speakman Townhomes	10-Feb-2005	17-Feb-2016	New Castle	1000000	48537200
DE-1367	Newark Housing Authority Cleveland Height...	29-Sep-2006	07-Apr-2016	New Castle	1000000	11113300
DE-1376	Delaware Humane Association Property	23-Jun-2006	18-Oct-2016	New Castle	1000000	3964800
DE-1377	Justison Landing Project	06-Apr-2006	23-Aug-2017	New Castle	1000000	174156600
DE-1384	Up the Creek Restaurant	13-Apr-2006	04-Apr-2016	New Castle	225000	587600
DE-1393	Intersection of Rt. 13 and Rt.154	23-Jun-2006	09-Aug-2016	Kent	63465	1737300
DE-1408	SIP, Inc. Property	10-Jan-2007	30-Aug-2022	New Castle	101196	1563300
DE-1415	900 South Madison Street Facility	23-Oct-2008	06-Dec-2019	New Castle	633011	17133500
DE-1421	Former Pack and Processing Facility	30-May-2008	21-Jun-2016	New Castle	803729	2619800
DE-1428	Crozier Center Property	04-Jan-2008	16-Feb-2017	New Castle	176944	97339700
DE-1429	97 Vandever Property	04-Jan-2008	02-Feb-2016	New Castle	845464	3554000
DE-1449	2440 Red Lion Road Property	07-Nov-2008	08-Mar-2016	New Castle	144746	543200
DE-1464	Former Classic Image Site	20-Mar-2009	03-May-2018	New Castle	143622	618800
DE-1465	925 North Church Street Property	20-Mar-2009	06-Sep-2019	New Castle	118067	1017000
DE-1476	501 Partners LLC	17-Feb-2012	15-Sep-2015	New Castle	15877	2020000

**Brownfield Sites in the Analysis (continued)**

ProgramID	Site_Name	Cert_Date	COCRDate	County	Amt.Spent	Assess2025
DE-1481	Kempf Storage Site	05-Oct-2009	19-May-2022	New Castle	195962	1204500
DE-1486	Syntech OU-1 Site	19-Feb-2010	22-Dec-2015	New Castle	4298	474600
DE-1487	Braun Property Site	15-Apr-2010	14-Feb-2017	Kent	102256	283299
DE-1488	Former Straight Line Filters	26-May-2010	22-Jul-2016	New Castle	184531	1379500
DE-1503	Former Defiance Athletic Club Site	11-Mar-2011	06-Jan-2015	New Castle	311584	580200
DE-1507	Former Insteel Wire Site	03-May-2011	10-Jan-2019	New Castle	200000	14465900
DE-1510	Former S. DuPont Shell Station Site	17-Jun-2011	18-Mar-2018	New Castle	98997	652700
DE-1514	Former Commons Boulevard Sunoco Site	05-Jul-2011	27-Jul-2016	New Castle	152108	1511600
DE-1517	Former Milton Riverfront Site	30-Nov-2011	19-Nov-2015	Sussex	151350	245800
DE-1527	Thompson Property Site	27-Jul-2012	20-Jun-2016	Sussex	429026	5693500
DE-1534	Habitat for Humanity 14th and Walnut Street ...	14-Feb-2013	18-May-2017	New Castle	503287	2013600
DE-1535	217 New Road Site	06-Dec-2012	16-Jun-2015	New Castle	133718	614700
DE-1536	Mighty Muffler Site	06-Dec-2012	06-Mar-2019	New Castle	136566	248900
DE-1538	22 A East 23rd Street Site	14-Feb-2013	08-Jan-2015	New Castle	186900	26700
DE-1539	600 North DuPont Highway Site	14-Feb-2013	05-May-2015	New Castle	137978	224400
DE-1540	1320 Clifford Brown Walk	04-Mar-2013	28-Feb-2017	New Castle	625000	6811900
DE-1543	2207 Mitch Road Site	01-Mar-2013	08-Aug-2016	New Castle	133198	594500
DE-1544	511 Concord Avenue Site	01-Apr-2013	31-Oct-2018	New Castle	210844	129000
DE-1557	Former Modern Equipment Rental Site	23-Aug-2013	11-Mar-2016	New Castle	126305	1744400
DE-1558	721 Terminal Avenue Site	12-Sep-2013	21-Apr-2020	New Castle	198156	273000
DE-1565	First State Military Academy Site	08-Jan-2014	29-Sep-2015	Kent	479754	7839200
DE-1568	3006 Lancaster Avenue Site	13-Mar-2014	10-Jan-2017	New Castle	126102	284200
DE-1576	Former Able Machine Company Site	03-Apr-2014	02-Feb-2016	New Castle	121200	864500
DE-1577	3022-3028 New Castle Avenue, New Castle...	22-Apr-2014	04-Nov-2020	New Castle	625000	16056200
DE-1578	Former MikeGÇOs Mini Mart Site	30-Apr-2014	22-May-2018	Kent	199417	204600
DE-1579	Former Take A Break Site	02-May-2014	04-Jan-2016	New Castle	69618	3145700
DE-1580	307 Ridge Road Site	02-May-2014	01-Jun-2022	New Castle	142970	.
DE-1583	Former Super Soda Center Milford II Site	11-Jul-2014	07-Jan-2016	Kent	92612	219700
DE-1584	2712-2714 Kirkwood Highway Site	11-Jul-2014	01-Jun-2017	New Castle	102575	526100
DE-1592	Former BP Truck Maintenance Facility Site	03-Oct-2014	26-Oct-2016	New Castle	153375	582800
DE-1593	Former Eastern Auto Body Site	24-Oct-2014	13-Apr-2016	New Castle	116099	456500
DE-1595	Former Avon Products Site	13-Nov-2014	19-Jul-2018	New Castle	199201	18651100
DE-1596	Former Penny Hill Mobile Site	19-Nov-2014	25-Jan-2017	New Castle	72450	465100
DE-1597	Former Free-Flow Packaging Site	09-Jan-2015	22-Mar-2018	New Castle	81175	1857800
DE-1598	Former 200 Churchmans Road Exxon Statio...	08-Jan-2015	10-Nov-2016	New Castle	94354	129000
DE-1599	Former Communications Printers Site	07-Jan-2015	14-Apr-2016	New Castle	79837	496300
DE-1602	Cathedral of St. John Church Wilmington, DE	10-Apr-2015	14-Feb-2020	New Castle	650912	12217100
DE-1603	2004 & 2008 Shipley Road	09-Apr-2015	18-Dec-2017	New Castle	157666	17663300

**Brownfield Sites in the Analysis (continued)**

ProgramID	Site_Name	Cert_Date	COCRDate	County	Amt.Spent	Assess2025
DE-1605	Liquid Alchemy Site	07-May-2015	30-Aug-2016	New Castle	159104	585700
DE-1610	Former McGrellis Auction House Site	02-Jul-2015	22-Aug-2019	New Castle	174485	800500
DE-1611	VEI Dover Crossroads Site	26-Jun-2015	09-Jun-2016	Kent	68798	1123800
DE-1612	Wilmington University Brandywine Campuys	08-Jul-2015	17-Aug-2016	New Castle	76476	7737800
DE-1613	Former Morheat Coal and Fuel Company Site	17-Jul-2015	08-Jun-2017	New Castle	109013	2330900
DE-1614	0 South Chapel Street Site	22-Jul-2015	22-Aug-2016	New Castle	117374	1157700
DE-1617	Former Dover Products Site	27-Aug-2015	04-Sep-2018	Kent	266121	548000
DE-1618	Fort Dupont Redevelopment	31-Aug-2015	29-Mar-2022	New Castle	676044	720974100
DE-1619	Former Greenwood Service Station Site	16-Sep-2015	23-Aug-2018	Kent	128951	139500
DE-1620	Boyds Corner Property Site	16-Sep-2015	28-Jan-2019	New Castle	153989	5059100
DE-1621	1215 Philadelphia Pike Site	14-Oct-2015	02-May-2017	New Castle	113214	273400
DE-1622	Former Philadelphia Pike Texaco Site	14-Oct-2015	25-Jun-2016	New Castle	161715	700100
DE-1625	Laurel Grain 2 Site	20-Nov-2015	18-Apr-2018	Sussex	200000	3294100
DE-1626	510 A Street Site	30-Nov-2015	22-Jul-2017	New Castle	138694	673900
DE-1628	0 Red Lion Road Site	30-Nov-2015	06-Jun-2018	New Castle	200000	21765200
DE-1632	735 B South Market Street	19-Feb-2016	26-Sep-2017	New Castle	113983	1363500
DE-1636	2-4 East 7th Street Site	29-Aug-2016	01-Aug-2018	New Castle	102952	2933600
DE-1637	200 West 9th Street Site	29-Aug-2016	28-Aug-2019	New Castle	81943	2543800
DE-1642	1001 North Spruce Street Site	25-Jan-2017	31-Jul-2018	New Castle	91858	29500
DE-1643	Lidl US	01-Jan-2017	31-Jan-2020	Kent	41004	3531100
DE-1658	Former Rodney Dorm Complex	23-Dec-2021	14-Dec-2021	New Castle	366965	1104900
DE-1666	Former Pit Stop Deli Site	10-Oct-2017	11-Jun-2020	Kent	76179	2210100
DE-1667	1289-1313 Federica Road Site	23-Oct-2017	06-Jul-2020	Kent	105883	282900
DE-1679	Christina Riverfront Hotel Site	23-Mar-2018	06-Sep-2022	New Castle	200000	21078200
DE-1681	South Garasches Lane Site	31-May-2018	23-Nov-2020	New Castle	1085666	47477900
DE-1683	JohnGÇÕs Body Shop	21-Jun-2018	15-Jan-2020	New Castle	128660	979500
DE-1684	4601 N. Market Street Site	09-Aug-2018	14-May-2020	New Castle	108850	7183900
DE-1686	Swain Property Site	29-Aug-2018	21-Jul-2020	Sussex	176768	150700
DE-1700	837 North DuPont Highway, Dover Site	12-Jun-2019	11-Nov-2021	Kent	155694	1492700
DE-1701	Deerfield Farms Site	26-Jun-2019	09-May-2022	Kent	273815	162200
DE-1703	Claymont Cleaners/Joe & TonyGÇÕs Servic...	02-Jul-2019	21-Apr-2022	New Castle	280881	1300900
DE-1715	Talleyville Sunoco Site	22-Jan-2020	23-Feb-2022	New Castle	255722	1203200
DE-1720	Former Mitchell Shop Site	25-Mar-2020	21-Apr-2022	New Castle	232573	1373400
DE-1721	2301 N. Market Street Site	31-Mar-2020	28-Nov-2022	New Castle	54776	235500
DE-1736	Del Campo Bakery Site	09-Sep-2020	25-May-2022	New Castle	356992	2664600
DE-1740	707 S. Union Street Site	15-Oct-2020	21-Apr-2022	New Castle	160478	1119700
DE-1760	900 S Heald Street	29-Mar-2021	01-Sep-2022	New Castle	227472	1101800



**2024 BROWNFIELDS DEVELOPMENT SURVEY**

Commissioned by the Delaware Department of Natural Resources and Environmental Control  
(CADSR – ID)

**AVAILABLE ONLINE AT:** [WWW.UDEL.EDU/CADSR/BROWNFIELDS24](http://WWW.UDEL.EDU/CADSR/BROWNFIELDS24)  
Enter your CADSR ID to access the online version  
**TO COMPLETE BY MAIL:**  
Mail your completed form in the attached prepaid envelope to:  
University of Delaware  
CADSR - Graham Hall  
Newark, DE 19716

- Use either a pen or pencil when completing the questionnaire.
- Follow all "SKIP" instructions after answering a question. If no instructions are provided, continue to the next question.
- If you have any questions, contact the Center for Applied Demography & Survey Research at the University of Delaware by calling 302-831-8406.

**PURPOSE** – Results from the survey will be used to review and evaluate the Brownfields Development Program.

**SCOPE** – Current and past owners of properties that participated in the Delaware Brownfields Development Program are contacted. Please answer the appropriate questions even if you are not the current owner of the property.

**PARTICIPATION** – Your participation is voluntary. However, your responses are important to ensure adequate health care for Delaware's residents.

One of your current or past properties located at:

[ADDRESS 1]  
[ADDRESS 2]  
CITY, ST, ZIP

Participated in the Delaware Brownfield Program. We would like to ask you questions regarding your investment, current use of this property and the program itself. Please answer the following questions for the specific property listed above.

1. Are you or your company currently the owner of the above property? *(select one)*

- 1  Yes
- 2  No

If NO, in what year did you sell the property?  
\_\_\_\_\_ (year sold)

If NO, what did you sell the property for?  
\_\_\_\_\_ (estimated sales price)

2. In 2024 were you or your company the owner of the property that participated in the Delaware Brownfields Development Program? *(select one)*

- 1  Yes (Go to Question 3)
- 2  No (Go to Question 14)

3. Identify the type of redevelopment envisioned for this site at the time you enrolled in the Delaware Brownfield Development Program. *(select one)*

- 1  Residential
- 2  Commercial
- 3  Industrial
- 4  Other (specify) \_\_\_\_\_

4. Was this a rehab or a new construction project? *(select one)*

- 1  Rehab
- 2  New construction
- 3  Other (specify) \_\_\_\_\_

5. Was the acquisition an investment or were/are you the end user? *(select one)*

- 1  Investment
- 2  End user

6. Identify the top 3 reasons why a Brownfield site was chosen? *(select three)*

- 1  Location
- 2  Infrastructure (quality/availability)
- 3  Availability of labor
- 4  Price of property
- 5  Liability waiver
- 6  Remediation assistance (Brownfield grant)
- 7  Zoning
- 8  Other (specify) \_\_\_\_\_

7. Compare (estimate) the relative importance of Remediation assistance (Brownfield grant) and the Liability waiver to your decision to participate in the Delaware Brownfield Development Program.

(Scale: 0% not important at all; 100% most important)  
\_\_\_\_\_ % Remediation assistance (Brownfield grant)  
\_\_\_\_\_ % Liability waiver  
\_\_\_\_\_ 100 % total

8. Did you apply for a grant for this development from Delaware Economic Development Office (DEDO)?

(select one)

- 1  Yes
- 2  No

If YES, what was the approximate amount you received? \_\_\_\_\_

9. To the best of your ability, please assess the Department of Natural Resources and Environmental Control (DNREC) report on mitigation require for this property by comparing it to your original expectations. (select one)
- 1  The mitigation required was excessive
  - 2  The mitigation required was on target with expectations
  - 3  The mitigation required was less than what was expected

10. What is your overall rating of the interaction with the Department of Natural Resources and Environmental Control (DNREC) during your participation in the Delaware Brownfield Development Program at this site? (select one)
- 1  Excellent
  - 2  Good
  - 3  Average
  - 4  Poor
  - 5  Not applicable

11. What is your overall rating of the interaction with the remediation contractors during your participation in the Delaware Brownfield Development Program at this site? (select one)
- 1  Excellent
  - 2  Good
  - 3  Average
  - 4  Poor
  - 5  Not applicable

12. Would you have developed the same property if it did not qualify for the Delaware Brownfield Development Program? (select one)
- 1  Yes
  - 2  No

If NO, would you have developed a different property?

- 1  Yes
- 2  No

13. If you had another Brownfield opportunity in the future, what is the probability you would apply again to participate in the Delaware Brownfield Development Program? (select one)
- 1  Very likely
  - 2  Likely

- 3  Unsure
- 4  Unlikely
- 5  Very unlikely
- 6  Not applicable

14. Did you receive a DNREC Brownfield Grant for this development? (select one)
- 1  Yes
  - 2  No

If YES, what was the approximate amount you spent? \_\_\_\_\_ (\$ spent)

15. Estimate the amount of money spent by you or your company (beyond DNREC’s Brownfield Grant) at this site since you enrolled in the Delaware Brownfield Development Program (or since you acquired the property, if you were not the owner at the time of the Delaware Brownfield Development Program participation) on the following (estimate):

\_\_\_\_\_ % CLEANUP; beyond DNREC’s Brownfield grant)

\_\_\_\_\_ % CONSTRUCTION; beyond DNREC’s Brownfield grant

\_\_\_\_\_ % OTHER (reports, fees, landscaping, engineering, etc); beyond DNREC’s Brownfield grant)

\_\_\_\_\_ % TOTAL investment in the property (CLEANUP+CONSTRUCTION+OTHER); Beyond DNREC’s Brownfield grant)

16. Estimate your total revenue and net operating income from this property for 2024 (or for the last year you owned the property if you no longer own it). (estimate)

\_\_\_\_\_ % total revenue from property

\_\_\_\_\_ % net operating income from property

17. If you have any comments about the questionnaire or your experiences, please include them in the space below:

\_\_\_\_\_

\_\_\_\_\_

\_\_\_\_\_

*Thank you for taking the time to complete the Brownfield Development Survey 2024.*

## Summary of Returns from the 2015 Survey

- The primary objective of the survey was to collect qualitative and quantitative data in the following three areas: a) general purpose of the investment, b) satisfaction with the Brownfield program and c) additional investment generated beyond that provided by the Brownfield Program grant. These needs were identified by the earlier study.
- A total of 61 respondents replied with usable instruments. Of those responding, 83% were owners and intended to develop the site as residential (31%), commercial (27%), industrial (19%) and other (22%).
- The ratings were positive for DNREC (80%), the mitigation report (88%), and the remediation contractors (94%). Some **39%** indicated they would have developed without the program and 64% were willing to use the program in the future.
- Overall, the 61 respondents had invested almost **\$120m** in the projects. One interesting point was revealed by this question. Of the \$120m, \$20m was spent on rehabilitation of existing structures rather than new construction. The total revenue generated in 2014 from these “rehab” projects was \$4.3m and net income was \$782,000. This implies that the total impact of the project is higher than that estimated by the gain in assessed value. Additionally, the net income in 2014 for “rehab” projects was six times that of those with new construction. This is likely to mean the rehab projects come online more rapidly than those using existing structures.
- There is no valid way to extend this result to the full universe of 209 potential respondents. This is a universe with a finite population. The results reflect only the responses of those responding who may be either like the non-respondents or not.

**Appendix Table: Modeling the Impact of the Net Growth in Employment at Brownfield Sites from COCR date to 2022.**

<b>Category</b>	<b>Units</b>	<b>New Castle</b>	<b>Kent</b>	<b>Sussex</b>	<b>Delaware</b>
Total Employment	Thousands (Jobs)	4.723	0.266	0.134	5.123
Gross Domestic Product	Billions of Fixed (2025) Dollars	0.855	0.028	0.017	0.901
Output	Billions of Fixed (2025) Dollars	1.452	0.055	0.031	1.538
Personal Income	Billions of Current Dollars	0.287	0.022	0.012	0.321

**Appendix Table: Net Employment Growth Impacts by Industry Sector.**

Industry	New Castle	Kent	Sussex	Delaware
All Industries	4,723	266	134	5,123
Forestry, fishing, and hunting	1	-	-	1
Mining	-	-	-	1
Utilities	10	-	-	10
Construction	741	25	19	785
Manufacturing	469	28	5	502
Wholesale trade	158	3	1	163
Retail trade	629	22	10	661
Transportation and warehousing	100	3	2	105
Information	81	-	14	95
Finance and insurance	404	1	1	405
Real estate and rental and leasing	391	10	12	413
Professional, scientific, and technical services	297	11	7	315
Management of companies and enterprises	2	-	-	2
Administrative, support, waste management, and remediation services	217	10	8	234
Educational services; private	8	30	-	38
Health care and social assistance	562	33	(1)	594
Arts, entertainment, and recreation	87	2	2	91
Accommodation and food services	217	51	51	320
Other services (except public administration)	171	14	5	190
State and Local Government	178	21	(2)	197

Note: Employment inputs were adjusted by the underlying employment growth by industry sector to arrive at a net change in employment.

County	ID	Parcel ID	Certification Date	COCR Date
Kent	DE-1334	2-05-07612-02-4000-00001	December 15, 2006	June 25, 2018
Kent	DE-1334	2-05-07612-04-4000-0001	December 15, 2006	June 25, 2018
Kent	DE-1334	2-05-07612-04-4100-0001	December 15, 2006	June 25, 2018
Kent	DE-1393	4-00-04604-01-2300-00001	June 23, 2006	August 9, 2016
Kent	DE-1487	2-05-07709-03-3700-00001	April 15, 2010	February 14, 2017
Kent	DE-1487	2-05-07709-03-5100-00001	15-Apr-2010	February 14, 2017
Kent	DE-1487	2-05-07709-03-5900-00001	April 15, 2010	February 14, 2017
Kent	DE-1583	5-16-18311-01-0300-00001	July 11, 2014	January 7, 2016
Kent	DE-1611	2-05-06805-01-1501-00001	June 26, 2015	June 26, 2026
Kent	DE-1643	2-05-06818-01-2400-00001	January 1, 2017	January 31, 2020
Kent	DE-1643	2-05-06818-01-2402-00001	January 1, 2017	January 31, 2020
Kent	DE-1666	8-08-12901-01-6000-00001	October 10, 2017	June 11, 2020
Kent	DE-1667	8-08-14107-01-3900-00001	October 10, 2017	July 6, 2020
Kent	DE-1667	8-08-14107-01-4000-00001	October 23, 2017	July 6, 2020
Kent	DE-1700	2-05-05700-01-4300-00001	June 12, 2019	November 11, 2021
Kent	DE-1701	2-00-05700-02-0400-00001	June 29, 2019	November 11, 2021
Kent	DE-1611	2-05-06805-01-1500-00001	June 26, 2015	June 9, 2016
Kent	DE-0359	2-05-07709-04-4700-00001	October 23, 2012	June 20, 2016
Kent	41640	3-04-01806-01-6500-00001	January 8, 2014	September 29, 2015
Kent	DE-1578	8-08-14107-01-0701-00001	April 30, 2015	May 22, 2018
New Castle	DE-1628	1200210079	November 30, 2015	June 6, 2018
New Castle	DE-1628	1200210080	November 30, 2015	June 6, 2018
New Castle	DE-1628	1200210081	November 30, 2015	June 6, 2018
New Castle	DE-1628	1200210082	November 30, 2015	June 6, 2018
New Castle	DE-1628	1200210083	November 30, 2015	June 6, 2018
New Castle	DE-1628	1200210084	November 30, 2015	June 6, 2018
New Castle	DE-1628	1200210085	November 30, 2015	June 6, 2018
New Castle	DE-1628	1200210086	November 30, 2015	June 6, 2018
New Castle	DE-1628	1200210087	November 30, 2015	June 6, 2018
New Castle	DE-1628	1200210088	November 30, 2015	June 6, 2018
New Castle	DE-1628	1200210089	November 30, 2015	June 6, 2018
New Castle	DE-1628	1200210090	November 30, 2015	June 6, 2018
New Castle	DE-1628	1200210091	November 30, 2015	June 6, 2018
New Castle	DE-1628	1200210092	November 30, 2015	June 6, 2018
New Castle	DE-1628	1200210093	November 30, 2015	June 6, 2018
New Castle	DE-1628	1200210094	November 30, 2015	June 6, 2018
New Castle	DE-1628	1200210095	November 30, 2015	June 6, 2018
New Castle	DE-1628	1200210096	November 30, 2015	June 6, 2018
New Castle	DE-1628	1200230079	November 30, 2015	June 6, 2018
New Castle	DE-1628	1200230080	November 30, 2015	June 6, 2018
New Castle	DE-1628	1200230081	November 30, 2015	June 6, 2018

County	ID	Parcel ID	Certification Date	COCR Date
New Castle	DE-1628	1200230082	November 30, 2015	June 6, 2018
New Castle	DE-1628	1200230083	November 30, 2015	June 6, 2018
New Castle	DE-1628	1200230084	November 30, 2015	June 6, 2018
New Castle	DE-1628	1200230085	November 30, 2015	June 6, 2018
New Castle	DE-1628	1200230086	November 30, 2015	June 6, 2018
New Castle	DE-1632	1000100002	February 19, 2016	September 26, 2017
New Castle	DE-1618	1202300020	August 31, 2015	March 29, 2022
New Castle	DE-1628	1200210018	November 30, 2015	June 6, 2018
New Castle	DE-1637	2603520030	August 29, 2016	August 28, 2019
New Castle	DE-0105	1803200254	September 10, 2009	June 26, 2019
New Castle	DE-0105	1803500121	September 10, 2009	June 26, 2019
New Castle	DE-0105	1803600002	September 10, 2009	June 26, 2019
New Castle	DE-0105	1803600003	September 10, 2009	June 26, 2019
New Castle	DE-0105	1803600004	September 10, 2009	June 26, 2019
New Castle	DE-0105	1803600005	September 10, 2009	June 26, 2019
New Castle	DE-0105	1803600006	September 10, 2009	June 26, 2019
New Castle	DE-0105	1803800001	September 10, 2009	June 26, 2019
New Castle	DE-0105	1803800003	September 10, 2009	June 26, 2019
New Castle	DE-0105	1803800005	September 10, 2009	June 26, 2019
New Castle	DE-0105	1803900002	September 10, 2009	June 26, 2019
New Castle	DE-0105	1803900003	September 10, 2009	June 26, 2019
New Castle	DE-0105	1803900005	September 10, 2009	June 26, 2019
New Castle	DE-0105	1803900006	September 10, 2009	June 26, 2019
New Castle	DE-0105	1803900007	September 10, 2009	June 26, 2019
New Castle	DE-0105	1803900008	September 10, 2009	June 26, 2019
New Castle	DE-0105	1804000001	September 10, 2009	June 26, 2019
New Castle	DE-0105	1804000002	September 10, 2009	June 26, 2019
New Castle	DE-0105	1804000003	September 10, 2009	June 26, 2019
New Castle	DE-0105	1804000004	September 10, 2009	June 26, 2019
New Castle	DE-0105	1804000005	September 10, 2009	June 26, 2019
New Castle	DE-0105	1804000006	September 10, 2009	June 26, 2019
New Castle	DE-0105	1804000007	September 10, 2009	June 26, 2019
New Castle	DE-0105	1804000009	September 10, 2009	June 26, 2019
New Castle	DE-0105	1804000010	September 10, 2009	June 26, 2019
New Castle	DE-0105	1804000014	September 10, 2009	June 26, 2019
New Castle	DE-0105	1804000015	September 10, 2009	June 26, 2019
New Castle	DE-0105	1804000016	September 10, 2009	June 26, 2019
New Castle	DE-0105	1804000019	September 10, 2009	June 26, 2019
New Castle	DE-0105	1804000020	September 10, 2009	June 26, 2019
New Castle	DE-0105	1804400021	September 10, 2009	June 26, 2019
New Castle	DE-0105	1804400022	September 10, 2009	June 26, 2019

<b>County</b>	<b>ID</b>	<b>Parcel ID</b>	<b>Certification Date</b>	<b>COCR Date</b>
New Castle	DE-0105	1804400023	September 10, 2009	June 26, 2019
New Castle	DE-0105	1804400024	September 10, 2009	June 26, 2019
New Castle	DE-0105	1804400025	September 10, 2009	June 26, 2019
New Castle	DE-0105	1804400026	September 10, 2009	June 26, 2019
New Castle	DE-0105	1804400091	September 10, 2009	June 26, 2019
New Castle	DE-0105	1804400092	September 10, 2009	June 26, 2019
New Castle	DE-0105	1804400093	September 10, 2009	June 26, 2019
New Castle	DE-0197	2600820001	September 17, 2002	September 13, 2018
New Castle	DE-0256	703940008	April 19, 2017	May 23, 2018
New Castle	DE-0256	703940009	April 19, 2017	May 23, 2018
New Castle	DE-0256	703940011	April 19, 2017	May 23, 2018
New Castle	DE-0327	2602910013	June 20, 2006	March 13, 2017
New Castle	DE-0327	2602910014	June 20, 2006	March 13, 2017
New Castle	DE-0327	2602910015	June 20, 2006	March 13, 2017
New Castle	DE-0327	2602910016	June 20, 2006	March 13, 2017
New Castle	DE-0327	2602910017	June 20, 2006	March 13, 2017
New Castle	DE-0327	2602910018	June 20, 2006	March 13, 2017
New Castle	DE-0327	2602910019	June 20, 2006	March 13, 2017
New Castle	DE-0327	2602910020	June 20, 2006	March 13, 2017
New Castle	DE-0327	2602910021	June 20, 2006	March 13, 2017
New Castle	DE-0327	2602910022	June 20, 2006	March 13, 2017
New Castle	DE-0327	2602910023	June 20, 2006	March 13, 2017
New Castle	DE-0327	2602910024	June 20, 2006	March 13, 2017
New Castle	DE-0327	2602910025	June 20, 2006	March 13, 2017
New Castle	DE-0327	2602910026	June 20, 2006	March 13, 2017
New Castle	DE-0327	2602910027	June 20, 2006	March 13, 2017
New Castle	DE-0327	2602910028	June 20, 2006	March 13, 2017
New Castle	DE-0327	2602910029	June 20, 2006	March 13, 2017
New Castle	DE-0327	2602910030	June 20, 2006	March 13, 2017
New Castle	DE-0327	2602910031	June 20, 2006	March 13, 2017
New Castle	DE-0327	2602910032	June 20, 2006	March 13, 2017
New Castle	DE-0327	2602910033	June 20, 2006	March 13, 2017
New Castle	DE-0327	2602910034	June 20, 2006	March 13, 2017
New Castle	DE-0327	2602910035	June 20, 2006	March 13, 2017
New Castle	DE-0327	2602910036	June 20, 2006	March 13, 2017
New Castle	DE-0327	2602910037	June 20, 2006	March 13, 2017
New Castle	DE-0327	2602910038	June 20, 2006	March 13, 2017
New Castle	DE-0327	2602910039	June 20, 2006	March 13, 2017
New Castle	DE-0328	2603640221	June 26, 2006	March 13, 2017
New Castle	DE-0328	2603640222	June 26, 2006	March 13, 2017
New Castle	DE-0328	2603640223	June 26, 2006	March 13, 2017
New Castle	DE-0328	2603640224	June 26, 2006	March 13, 2017

County	ID	Parcel ID	Certification Date	COCR Date
New Castle	DE-0328	2603640225	June 26, 2006	March 13, 2017
New Castle	DE-0328	2603640226	June 26, 2006	March 13, 2017
New Castle	DE-0328	2603640227	June 26, 2006	March 13, 2017
New Castle	DE-0328	2603640228	June 26, 2006	March 13, 2017
New Castle	DE-0328	2603640229	June 26, 2006	March 13, 2017
New Castle	DE-0328	2603640230	June 26, 2006	March 13, 2017
New Castle	DE-0328	2603640231	June 26, 2006	March 13, 2017
New Castle	DE-0328	2603640232	June 26, 2006	March 13, 2017
New Castle	DE-0339	2604400010	April 24, 2008	December 14, 2015
New Castle	DE-0339	2604400012	April 24, 2008	December 14, 2015
New Castle	DE-0355	2602930002	April 12, 2012	January 11, 2016
New Castle	DE-0355	2602930007	April 12, 2012	January 11, 2016
New Castle	DE-0355	2602930265	April 12, 2012	January 11, 2016
New Castle	DE-1068	2604900010	April 15, 2003	January 20, 2015
New Castle	DE-1078	2603510462	March 23, 2018	February 12, 2020
New Castle	DE-1078	2603510463	March 23, 2018	February 12, 2020
New Castle	DE-1078	2603510464	March 23, 2018	February 12, 2020
New Castle	DE-1078	2603510465	March 23, 2018	February 12, 2020
New Castle	DE-1078	2603510466	March 23, 2018	February 12, 2020
New Castle	DE-1078	2603510467	March 23, 2018	February 12, 2020
New Castle	DE-1078	2603530192	March 23, 2018	February 12, 2020
New Castle	DE-1078	2603530193	March 23, 2018	February 12, 2020
New Castle	DE-1078	2603530212	March 23, 2018	February 12, 2020
New Castle	DE-1131	2605100021	October 29, 2009	August 13, 2018
New Castle	DE-1147	2604500011	November 19, 2002	March 13, 2019
New Castle	DE-1147	2604500012	November 19, 2002	March 13, 2019
New Castle	DE-1147	2604500021	November 19, 2002	March 13, 2019
New Castle	DE-1153	1801400136	September 19, 2008	April 23, 2019
New Castle	DE-1153	1801400266	September 19, 2008	April 23, 2019
New Castle	DE-1175	2605700012	June 22, 2009	April 12, 2016
New Castle	DE-1200	611600132	January 27, 2017	May 20, 2019
New Castle	DE-1237	2604300003	September 17, 2002	August 15, 2018
New Castle	DE-1248	2603530232	November 14, 2005	October 13, 2016
New Castle	DE-1248	2603530233	November 14, 2005	October 13, 2016
New Castle	DE-1248	2603530234	November 14, 2005	October 13, 2016
New Castle	DE-1248	2603530235	November 14, 2005	October 13, 2016
New Castle	DE-1248	2603530236	November 14, 2005	October 13, 2016
New Castle	DE-1248	2603530237	November 14, 2005	October 13, 2016
New Castle	DE-1291	2605000047	August 25, 2003	March 10, 2020
New Castle	DE-1291	2605000048	August 25, 2003	March 10, 2020
New Castle	DE-1291	2605000049	August 25, 2003	March 10, 2020
New Castle	DE-1291	2605000057	August 25, 2003	March 10, 2020
New Castle	DE-1291	2605000088	August 25, 2003	March 10, 2020

<b>County</b>	<b>ID</b>	<b>Parcel ID</b>	<b>Certification Date</b>	<b>COCR Date</b>
New Castle	DE-1293	2604400013	September 22, 2004	October 28, 2019
New Castle	DE-1293	2604400044	September 22, 2004	October 28, 2019
New Castle	DE-1347	2601630131	February 10, 2005	February 17, 2016
New Castle	DE-1347	2602310049	February 10, 2005	February 17, 2016
New Castle	DE-1347	2602310057	February 10, 2005	February 17, 2016
New Castle	DE-1347	2602310065	February 10, 2005	February 17, 2016
New Castle	DE-1347	2602310068	February 10, 2005	February 17, 2016
New Castle	DE-1347	2602310094	February 10, 2005	February 17, 2016
New Castle	DE-1347	2602310095	February 10, 2005	February 17, 2016
New Castle	DE-1347	2602310096	February 10, 2005	February 17, 2016
New Castle	DE-1347	2602310097	February 10, 2005	February 17, 2016
New Castle	DE-1347	2602310098	February 10, 2005	February 17, 2016
New Castle	DE-1347	2602310099	February 10, 2005	February 17, 2016
New Castle	DE-1347	2602310100	February 10, 2005	February 17, 2016
New Castle	DE-1347	2602310101	February 10, 2005	February 17, 2016
New Castle	DE-1347	2602310102	February 10, 2005	February 17, 2016
New Castle	DE-1347	2602310103	February 10, 2005	February 17, 2016
New Castle	DE-1347	2602310104	February 10, 2005	February 17, 2016
New Castle	DE-1347	2602310105	February 10, 2005	February 17, 2016
New Castle	DE-1347	2602310106	February 10, 2005	February 17, 2016
New Castle	DE-1347	2602310107	February 10, 2005	February 17, 2016
New Castle	DE-1347	2602310108	February 10, 2005	February 17, 2016
New Castle	DE-1347	2602310109	February 10, 2005	February 17, 2016
New Castle	DE-1347	2602310110	February 10, 2005	February 17, 2016
New Castle	DE-1347	2602310111	February 10, 2005	February 17, 2016
New Castle	DE-1347	2602310112	February 10, 2005	February 17, 2016
New Castle	DE-1347	2602310113	February 10, 2005	February 17, 2016
New Castle	DE-1347	2602310114	February 10, 2005	February 17, 2016
New Castle	DE-1347	2602310115	February 10, 2005	February 17, 2016
New Castle	DE-1347	2602310116	February 10, 2005	February 17, 2016
New Castle	DE-1347	2602310117	February 10, 2005	February 17, 2016
New Castle	DE-1347	2602310118	February 10, 2005	February 17, 2016
New Castle	DE-1347	2602310119	February 10, 2005	February 17, 2016
New Castle	DE-1347	2602310120	February 10, 2005	February 17, 2016
New Castle	DE-1347	2602310121	February 10, 2005	February 17, 2016
New Castle	DE-1347	2602310122	February 10, 2005	February 17, 2016
New Castle	DE-1347	2602310123	February 10, 2005	February 17, 2016
New Castle	DE-1347	2602310124	February 10, 2005	February 17, 2016
New Castle	DE-1347	2602310125	February 10, 2005	February 17, 2016
New Castle	DE-1347	2602310126	February 10, 2005	February 17, 2016
New Castle	DE-1347	2602310127	February 10, 2005	February 17, 2016
New Castle	DE-1347	2602310128	February 10, 2005	February 17, 2016
New Castle	DE-1347	2602310129	February 10, 2005	February 17, 2016

<b>County</b>	<b>ID</b>	<b>Parcel ID</b>	<b>Certification Date</b>	<b>COCR Date</b>
New Castle	DE-1347	2602310130	February 10, 2005	February 17, 2016
New Castle	DE-1347	2602310131	February 10, 2005	February 17, 2016
New Castle	DE-1347	2602310132	February 10, 2005	February 17, 2016
New Castle	DE-1347	2602310133	February 10, 2005	February 17, 2016
New Castle	DE-1347	2602310134	February 10, 2005	February 17, 2016
New Castle	DE-1347	2602330054	February 10, 2005	February 17, 2016
New Castle	DE-1347	2602330097	February 10, 2005	February 17, 2016
New Castle	DE-1347	2602330098	February 10, 2005	February 17, 2016
New Castle	DE-1347	2602330099	February 10, 2005	February 17, 2016
New Castle	DE-1347	2602330100	February 10, 2005	February 17, 2016
New Castle	DE-1347	2602330101	February 10, 2005	February 17, 2016
New Castle	DE-1347	2602330102	February 10, 2005	February 17, 2016
New Castle	DE-1347	2602330103	February 10, 2005	February 17, 2016
New Castle	DE-1347	2602330104	February 10, 2005	February 17, 2016
New Castle	DE-1347	2602330105	February 10, 2005	February 17, 2016
New Castle	DE-1347	2602330106	February 10, 2005	February 17, 2016
New Castle	DE-1347	2602330107	February 10, 2005	February 17, 2016
New Castle	DE-1347	2602330108	February 10, 2005	February 17, 2016
New Castle	DE-1347	2602330109	February 10, 2005	February 17, 2016
New Castle	DE-1347	2602330110	February 10, 2005	February 17, 2016
New Castle	DE-1347	2602330111	February 10, 2005	February 17, 2016
New Castle	DE-1347	2602330112	February 10, 2005	February 17, 2016
New Castle	DE-1347	2602330113	February 10, 2005	February 17, 2016
New Castle	DE-1347	2602330114	February 10, 2005	February 17, 2016
New Castle	DE-1347	2602330115	February 10, 2005	February 17, 2016
New Castle	DE-1347	2602330116	February 10, 2005	February 17, 2016
New Castle	DE-1347	2602330117	February 10, 2005	February 17, 2016
New Castle	DE-1347	2602330118	February 10, 2005	February 17, 2016
New Castle	DE-1347	2602330119	February 10, 2005	February 17, 2016
New Castle	DE-1347	2602330120	February 10, 2005	February 17, 2016
New Castle	DE-1347	2602330121	February 10, 2005	February 17, 2016
New Castle	DE-1347	2602330122	February 10, 2005	February 17, 2016
New Castle	DE-1347	2602330123	February 10, 2005	February 17, 2016
New Castle	DE-1347	2602330124	February 10, 2005	February 17, 2016
New Castle	DE-1347	2602330125	February 10, 2005	February 17, 2016
New Castle	DE-1367	1801500001	September 29, 2006	April 7, 2016
New Castle	DE-1367	1801500006	September 29, 2006	April 7, 2016
New Castle	DE-1376	2605000039	June 23, 2006	October 18, 2016
New Castle	DE-1377	2604200003	April 6, 2006	August 23, 2017
New Castle	DE-1377	2604200005	April 6, 2006	August 23, 2017
New Castle	DE-1377	2604200006	April 6, 2006	August 23, 2017
New Castle	DE-1377	2604200013	April 6, 2006	August 23, 2017
New Castle	DE-1377	2604200023	April 6, 2006	August 23, 2017

County	ID	Parcel ID	Certification Date	COCR Date
New Castle	DE-1377	2604200024	April 6, 2006	August 23, 2017
New Castle	DE-1377	2604200027	April 6, 2006	August 23, 2017
New Castle	DE-1377	2604200030	April 6, 2006	August 23, 2017
New Castle	DE-1377	2604200031	April 6, 2006	August 23, 2017
New Castle	DE-1377	2604200032	April 6, 2006	August 23, 2017
New Castle	DE-1377	2604200033	April 6, 2006	August 23, 2017
New Castle	DE-1377	2604200041	April 6, 2006	August 23, 2017
New Castle	DE-1377	2604200042	April 6, 2006	August 23, 2017
New Castle	DE-1384	2605200004	April 13, 2006	April 4, 2016
New Castle	DE-1408	2604400016	January 10, 2007	August 30, 2022
New Castle	DE-1408	2604400018	January 10, 2007	August 30, 2022
New Castle	DE-1408	2604400047	January 10, 2007	August 30, 2022
New Castle	DE-1415	2604900003	October 23, 2008	December 6, 2019
New Castle	DE-1421	2604400014	May 30, 2008	June 21, 2016
New Castle	DE-1421	2604400015	May 30, 2008	June 21, 2016
New Castle	DE-1428	902300010	January 4, 2008	February 16, 2017
New Castle	DE-1428	902300015	January 4, 2008	February 16, 2017
New Castle	DE-1428	902300016	January 4, 2008	February 16, 2017
New Castle	DE-1428	902300017	January 4, 2008	February 16, 2017
New Castle	DE-1428	902300027	January 4, 2008	February 16, 2017
New Castle	DE-1428	902300028	January 4, 2008	February 16, 2017
New Castle	DE-1428	902300029	January 4, 2008	February 16, 2017
New Castle	DE-1428	902300054	January 4, 2008	February 16, 2017
New Castle	DE-1428	902300056	January 4, 2008	February 16, 2017
New Castle	DE-1428	902300059	January 4, 2008	February 16, 2017
New Castle	DE-1428	902300060	January 4, 2008	February 16, 2017
New Castle	DE-1428	902300061	January 4, 2008	February 16, 2017
New Castle	DE-1429	2602910090	January 4, 2008	February 2, 2016
New Castle	DE-1429	2602910184	January 4, 2008	February 2, 2016
New Castle	DE-1429	2602910186	January 4, 2008	February 2, 2016
New Castle	DE-1429	2602910187	January 4, 2008	February 2, 2016
New Castle	DE-1429	2602910188	January 4, 2008	February 2, 2016
New Castle	DE-1429	2602910189	January 4, 2008	February 2, 2016
New Castle	DE-1429	2602910190	January 4, 2008	February 2, 2016
New Castle	DE-1429	2602910191	January 4, 2008	February 2, 2016
New Castle	DE-1429	2602910192	January 4, 2008	February 2, 2016
New Castle	DE-1429	2602910193	January 4, 2008	February 2, 2016
New Castle	DE-1429	2602910194	January 4, 2008	February 2, 2016
New Castle	DE-1429	2602910195	January 4, 2008	February 2, 2016
New Castle	DE-1429	2602910196	January 4, 2008	February 2, 2016
New Castle	DE-1429	2602910198	January 4, 2008	February 2, 2016

County	ID	Parcel ID	Certification Date	COCR Date
New Castle	DE-1429	2602910199	January 4, 2008	February 2, 2016
New Castle	DE-1429	2602910200	January 4, 2008	February 2, 2016
New Castle	DE-1429	2602910201	January 4, 2008	February 2, 2026
New Castle	DE-1429	2602910202	January 4, 2008	February 2, 2016
New Castle	DE-1429	2602910203	January 4, 2008	February 2, 2016
New Castle	DE-1429	2602910204	January 4, 2008	February 2, 2016
New Castle	DE-1429	2602910205	January 4, 2008	February 2, 2026
New Castle	DE-1449	1201800014	November 7, 2008	March 8, 2016
New Castle	DE-1465	2603630677	March 20, 2009	September 6, 2019
New Castle	DE-1465	2603630717	March 20, 2009	September 6, 2019
New Castle	DE-1465	2603630718	March 20, 2009	September 6, 2019
New Castle	DE-1465	2603630719	March 20, 2009	September 6, 2019
New Castle	DE-1465	2603630720	March 20, 2009	September 6, 2019
New Castle	DE-1476	2605700012	February 17, 2012	September 15, 2015
New Castle	DE-1481	2604400017	October 5, 2009	May 19, 2022
New Castle	DE-1481	2604400029	October 5, 2009	May 19, 2022
New Castle	DE-1486	1101000068	February 19, 2010	December 22, 2015
New Castle	DE-1503	2604910080	March 11, 2011	January 6, 2014
New Castle	DE-1503	2604910259	March 11, 2011	January 6, 2015
New Castle	DE-1507	2605800012	May 3, 2011	January 10, 2019
New Castle	DE-1507	2605800020	May 3, 2011	January 10, 2019
New Castle	DE-1510	1003000029	June 17, 2011	March 18, 2018
New Castle	DE-1514	1001300019	July 5, 2011	July 27, 2019
New Castle	DE-1534	2602930050	February 14, 2013	May 18, 2017
New Castle	DE-1534	2602930051	February 14, 2013	May 18, 2017
New Castle	DE-1534	2602930052	February 14, 2013	May 18, 2017
New Castle	DE-1534	2602930053	February 14, 2013	May 18, 2017
New Castle	DE-1534	2602930054	February 14, 2013	May 18, 2017
New Castle	DE-1534	2602930055	February 14, 2013	May 18, 2017
New Castle	DE-1534	2602930056	February 14, 2013	May 18, 2017
New Castle	DE-1534	2602930057	February 14, 2013	May 18, 2017
New Castle	DE-1534	2602930267	February 14, 2013	May 18, 2017
New Castle	DE-1534	2602930277	February 14, 2013	May 18, 2017
New Castle	DE-1535	1900200273	December 6, 2012	June 16, 2015
New Castle	DE-1536	613900135	December 6, 2012	March 6, 2019
New Castle	DE-1538	2602240131	February 14, 2013	January 8, 2015
New Castle	DE-1539	1001910159	February 14, 2013	May 5, 2015
New Castle	DE-1540	2602930254	March 4, 2013	February 28, 2017
New Castle	DE-1540	2602930261	March 4, 2013	February 28, 2017
New Castle	DE-1543	805110130	March 1, 2013	August 8, 2016
New Castle	DE-1544	2601530129	April 1, 2013	October 31, 2018

<b>County</b>	<b>ID</b>	<b>Parcel ID</b>	<b>Certification Date</b>	<b>COCR Date</b>
New Castle	DE-1557	703940010	August 23, 2013	March 11, 2016
New Castle	DE-1557	704320024	August 23, 2013	March 11, 2016
New Castle	DE-1558	2606600006	September 12, 2013	April 21, 2020
New Castle	DE-1568	703610146	March 13, 2014	January 10, 2017
New Castle	DE-1576	704320004	April 3, 2014	February 2, 2016
New Castle	DE-1576	704320005	April 3, 2014	February 2, 2016
New Castle	DE-1577	1001000018	April 22, 2014	November 4, 2020
New Castle	DE-1577	1001020534	April 22, 2014	November 4, 2020
New Castle	DE-1579	2604840047	May 2, 2014	January 4, 2016
New Castle	DE-1584	703810176	July 11, 2014	June 1, 2017
New Castle	DE-1592	1003600001	October 3, 2014	October 26, 2016
New Castle	DE-1593	703940003	October 24, 2014	April 13, 2016
New Castle	DE-1595	901600007	November 13, 2014	July 19, 2018
New Castle	DE-1596	609500545	November 19, 2014	January 25, 2017
New Castle	DE-1597	901700032	January 9, 2015	March 22, 2018
New Castle	DE-1598	1001700021	January 8, 2015	November 10, 2016
New Castle	DE-1599	902200110	January 7, 2015	April 14, 2016
New Castle	DE-1602	2602230269	January 7, 2015	April 14, 2016
New Castle	DE-1602	2602230278	April 10, 2015	February 14, 2020
New Castle	DE-1602	2602230300	April 10, 2015	February 14, 2020
New Castle	DE-1602	2602230301	April 10, 2015	February 14, 2020
New Castle	DE-1602	2602230302	April 10, 2015	February 14, 2020
New Castle	DE-1603	607800404	April 9, 2015	December 18, 2017
New Castle	DE-1603	607800459	April 9, 2015	December 18, 2017
New Castle	DE-1605	704320022	May 7, 2015	August 30, 2016
New Castle	DE-1610	801200033	July 2, 2015	August 22, 2019
New Castle	DE-1610	801200034	July 2, 2015	August 22, 2019
New Castle	DE-1610	801200073	July 2, 2015	August 22, 2019
New Castle	DE-1610	801210253	July 2, 2015	August 22, 2019
New Castle	DE-1610	801210254	July 2, 2015	August 22, 2019
New Castle	DE-1610	801210255	July 2, 2015	August 22, 2019
New Castle	DE-1610	801210256	July 2, 2015	August 22, 2019
New Castle	DE-1610	801210257	July 2, 2015	August 22, 2019
New Castle	DE-1610	801210258	July 2, 2015	August 22, 2019
New Castle	DE-1610	801210259	July 2, 2015	August 22, 2019
New Castle	DE-1610	801210260	July 2, 2015	August 22, 2019
New Castle	DE-1610	801210269	July 2, 2015	August 22, 2019
New Castle	DE-1610	801210270	July 2, 2015	August 22, 2019
New Castle	DE-1610	801210271	July 2, 2015	August 22, 2019
New Castle	DE-1610	801210272	July 2, 2015	August 22, 2019
New Castle	DE-1610	801210273	July 2, 2015	August 22, 2019

<b>County</b>	<b>ID</b>	<b>Parcel ID</b>	<b>Certification Date</b>	<b>COCR Date</b>
New Castle	DE-1610	801210274	July 2, 2015	August 22, 2019
New Castle	DE-1610	801210275	July 2, 2015	August 22, 2019
New Castle	DE-1610	801210276	July 2, 2015	August 22, 2019
New Castle	DE-1610	801210277	July 2, 2015	August 22, 2019
New Castle	DE-1610	801210278	July 2, 2015	August 22, 2019
New Castle	DE-1610	801210287	July 2, 2015	August 22, 2019
New Castle	DE-1610	801210288	July 2, 2015	August 22, 2019
New Castle	DE-1610	801210289	July 2, 2015	August 22, 2019
New Castle	DE-1610	801210290	July 2, 2015	August 22, 2019
New Castle	DE-1610	801210291	July 2, 2015	August 22, 2019
New Castle	DE-1610	801210292	July 2, 2015	August 22, 2019
New Castle	DE-1610	801210293	July 2, 2015	August 22, 2019
New Castle	DE-1610	801210294	July 2, 2015	August 22, 2019
New Castle	DE-1610	801210295	July 2, 2015	August 22, 2019
New Castle	DE-1610	801210296	July 2, 2015	August 22, 2019
New Castle	DE-1610	801210307	July 2, 2015	August 22, 2019
New Castle	DE-1610	801210308	July 2, 2015	August 22, 2019
New Castle	DE-1610	801210309	July 2, 2015	August 22, 2019
New Castle	DE-1610	801210310	July 2, 2015	August 22, 2019
New Castle	DE-1610	801210311	July 2, 2015	August 22, 2019
New Castle	DE-1610	801210312	July 2, 2015	August 22, 2019
New Castle	DE-1610	801210313	July 2, 2015	August 22, 2019
New Castle	DE-1610	801210314	July 2, 2015	August 22, 2019
New Castle	DE-1610	801210315	July 2, 2015	August 22, 2019
New Castle	DE-1610	801210316	July 2, 2015	August 22, 2019
New Castle	DE-1610	801210317	July 2, 2015	August 22, 2019
New Castle	DE-1610	801210318	July 2, 2015	August 22, 2019
New Castle	DE-1610	801210321	July 2, 2015	August 22, 2019
New Castle	DE-1610	801220152	July 2, 2015	August 22, 2019
New Castle	DE-1610	801220153	July 2, 2015	August 22, 2019
New Castle	DE-1610	801220154	July 2, 2015	August 22, 2019
New Castle	DE-1610	801230026	July 2, 2015	August 22, 2019
New Castle	DE-1610	801230027	July 2, 2015	August 22, 2019
New Castle	DE-1610	801230028	July 2, 2015	August 22, 2019
New Castle	DE-1610	801230029	July 2, 2015	August 22, 2019
New Castle	DE-1610	801230030	July 2, 2015	August 22, 2019
New Castle	DE-1610	801230031	July 2, 2015	August 22, 2019
New Castle	DE-1610	801230032	July 2, 2015	August 22, 2019
New Castle	DE-1610	801230033	July 2, 2015	August 22, 2019
New Castle	DE-1610	801230034	July 2, 2015	August 22, 2019
New Castle	DE-1610	801230035	July 2, 2015	August 22, 2019



County	ID	Parcel ID	Certification Date	COCR Date
New Castle	DE-1612	601900004	July 8, 2015	August 17, 2016
New Castle	DE-1613	2605740013	July 17, 2015	June 8, 2017
New Castle	DE-1613	2605740014	July 17, 2015	June 8, 2017
New Castle	DE-1613	2605740015	July 17, 2015	June 8, 2017
New Castle	DE-1613	2605740016	July 17, 2015	June 8, 2017
New Castle	DE-1613	2605740030	July 17, 2015	June 8, 2017
New Castle	DE-1613	2605740031	July 17, 2015	June 8, 2017
New Castle	DE-1613	2605830010	July 17, 2015	June 8, 2017
New Castle	DE-1613	2605830011	July 17, 2015	June 8, 2017
New Castle	DE-1614	1803300005	July 22, 2015	August 22, 2016
New Castle	DE-1618	1202300021	August 31, 2015	March 29, 2022
New Castle	DE-1618	1203000001	August 31, 2015	March 29, 2022
New Castle	DE-1618	1203000002	August 31, 2015	March 29, 2022
New Castle	DE-1618	2200900156	August 31, 2015	March 29, 2022
New Castle	DE-1618	2200900157	August 31, 2015	March 29, 2022
New Castle	DE-1618	2200900158	August 31, 2015	March 29, 2022
New Castle	DE-1618	2200900160	August 31, 2015	March 29, 2022
New Castle	DE-1618	2200900161	August 31, 2015	March 29, 2022
New Castle	DE-1618	2200900162	August 31, 2015	March 29, 2022
New Castle	DE-1618	2200900163	August 31, 2015	March 29, 2022
New Castle	DE-1618	2200900164	August 31, 2015	March 29, 2022
New Castle	DE-1618	2200900165	August 31, 2015	March 29, 2022
New Castle	DE-1618	2200900166	August 31, 2015	March 29, 2022
New Castle	DE-1618	2200900167	August 31, 2015	March 29, 2022
New Castle	DE-1618	2200900168	August 31, 2015	March 29, 2022
New Castle	DE-1618	2200900169	August 31, 2015	March 29, 2022
New Castle	DE-1618	2200900170	August 31, 2015	March 29, 2022
New Castle	DE-1618	2200900171	August 31, 2015	March 29, 2022
New Castle	DE-1618	2200900172	August 31, 2015	March 29, 2022
New Castle	DE-1618	2200900173	August 31, 2015	March 29, 2022
New Castle	DE-1618	2200900174	August 31, 2015	March 29, 2022
New Castle	DE-1618	2200900175	August 31, 2015	March 29, 2022
New Castle	DE-1618	2200900176	August 31, 2015	March 29, 2022
New Castle	DE-1618	2200900177	August 31, 2015	March 29, 2022
New Castle	DE-1618	2200900178	August 31, 2015	March 29, 2022
New Castle	DE-1618	2200900179	August 31, 2015	March 29, 2022
New Castle	DE-1618	2200900180	August 31, 2015	March 29, 2022
New Castle	DE-1618	2200900181	August 31, 2015	March 29, 2022
New Castle	DE-1618	2200900182	August 31, 2015	March 29, 2022
New Castle	DE-1618	2200900183	August 31, 2015	March 29, 2022
New Castle	DE-1618	2200900184	August 31, 2015	March 29, 2022



County	ID	Parcel ID	Certification Date	COCR Date
New Castle	DE-1618	2200900226	August 31, 2015	March 29, 2022
New Castle	DE-1618	2200900227	August 31, 2015	March 29, 2022
New Castle	DE-1618	2200900228	August 31, 2015	March 29, 2022
New Castle	DE-1618	2200900229	August 31, 2015	March 29, 2022
New Castle	DE-1618	2200900230	August 31, 2015	March 29, 2022
New Castle	DE-1618	2200900235	August 31, 2015	March 29, 2022
New Castle	DE-1618	2200900236	August 31, 2015	March 29, 2022
New Castle	DE-1618	2200900237	August 31, 2015	March 29, 2022
New Castle	DE-1618	2200900238	August 31, 2015	March 29, 2022
New Castle	DE-1618	2200900239	August 31, 2015	March 29, 2022
New Castle	DE-1618	2200900240	August 31, 2015	March 29, 2022
New Castle	DE-1618	2200900241	August 31, 2015	March 29, 2022
New Castle	DE-1618	2200900242	August 31, 2015	March 29, 2022
New Castle	DE-1618	2200900243	August 31, 2015	March 29, 2022
New Castle	DE-1618	2200900244	August 31, 2015	March 29, 2022
New Castle	DE-1618	2200900248	August 31, 2015	March 29, 2022
New Castle	DE-1618	2200900257	August 31, 2015	March 29, 2022
New Castle	DE-1618	2200900259	August 31, 2015	March 29, 2022
New Castle	DE-1618	2200900260	August 31, 2015	March 29, 2022
New Castle	DE-1618	2200900261	August 31, 2015	March 29, 2022
New Castle	DE-1618	2200900262	August 31, 2015	March 29, 2022
New Castle	DE-1618	2200900265	August 31, 2015	March 29, 2022
New Castle	DE-1618	2200900266	August 31, 2015	March 29, 2022
New Castle	DE-1618	2200900267	August 31, 2015	March 29, 2022
New Castle	DE-1618	2200900268	August 31, 2015	March 29, 2022
New Castle	DE-1618	2200900269	August 31, 2015	March 29, 2022
New Castle	DE-1618	2200900270	August 31, 2015	March 29, 2022
New Castle	DE-1618	2201100007	August 31, 2015	March 29, 2022
New Castle	DE-1618	2201100008	August 31, 2015	March 29, 2022
New Castle	DE-1618	2201100011	August 31, 2015	March 29, 2022
New Castle	DE-1618	2201100012	August 31, 2015	March 29, 2022
New Castle	DE-1618	2201100013	August 31, 2015	March 29, 2022
New Castle	DE-1618	2201100014	August 31, 2015	March 29, 2022
New Castle	DE-1618	2201100015	August 31, 2015	March 29, 2022
New Castle	DE-1618	2201300001	August 31, 2015	March 29, 2022
New Castle	DE-1620	1300700031	September 16, 2015	January 28, 2019
New Castle	DE-1621	611500171	October 14, 2015	May 2, 2017
New Castle	DE-1622	613200131	October 14, 2015	June 25, 2016
New Castle	DE-1626	2605000043	November 30, 2015	July 22, 2017
New Castle	DE-1628	1005300030	November 30, 2015	June 6, 2018
New Castle	DE-1628	1200200011	November 30, 2015	June 6, 2018



<b>County</b>	<b>ID</b>	<b>Parcel ID</b>	<b>Certification Date</b>	<b>COCR Date</b>
New Castle	DE-1628	1200210055	November 30, 2015	June 6, 2018
New Castle	DE-1628	1200210056	November 30, 2015	June 6, 2018
New Castle	DE-1628	1200210057	November 30, 2015	June 6, 2018
New Castle	DE-1628	1200210058	November 30, 2015	June 6, 2018
New Castle	DE-1628	1200210059	November 30, 2015	June 6, 2018
New Castle	DE-1628	1200210060	November 30, 2015	June 6, 2018
New Castle	DE-1628	1200210061	November 30, 2015	June 6, 2018
New Castle	DE-1628	1200210062	November 30, 2015	June 6, 2018
New Castle	DE-1628	1200210063	November 30, 2015	June 6, 2018
New Castle	DE-1628	1200210064	November 30, 2015	June 6, 2018
New Castle	DE-1628	1200210065	November 30, 2015	June 6, 2018
New Castle	DE-1628	1200210066	November 30, 2015	June 6, 2018
New Castle	DE-1628	1200210067	November 30, 2015	June 6, 2018
New Castle	DE-1628	1200210068	November 30, 2015	June 6, 2018
New Castle	DE-1628	1200210069	November 30, 2015	June 6, 2018
New Castle	DE-1628	1200210070	November 30, 2015	June 6, 2018
New Castle	DE-1628	1200210071	November 30, 2015	June 6, 2018
New Castle	DE-1628	1200210072	November 30, 2015	June 6, 2018
New Castle	DE-1628	1200210073	November 30, 2015	June 6, 2018
New Castle	DE-1628	1200210074	November 30, 2015	June 6, 2018
New Castle	DE-1628	1200210075	November 30, 2015	June 6, 2018
New Castle	DE-1628	1200210076	November 30, 2015	June 6, 2018
New Castle	DE-1628	1200210077	November 30, 2015	June 6, 2018
New Castle	DE-1628	1200210078	November 30, 2015	June 6, 2018
New Castle	DE-1632	1000100061	February 19, 2016	September 26, 2017
New Castle	DE-1632	1000100092	February 19, 2016	September 26, 2017
New Castle	DE-1636	2603540055	August 29, 2016	August 1, 2018
New Castle	DE-1636	2603540056	August 29, 2016	August 1, 2018
New Castle	DE-1636	2603540057	August 29, 2016	August 1, 2018
New Castle	DE-1636	2603540067	August 29, 2016	August 1, 2018

County	ID	Parcel ID	Certification Date	COCR Date
New Castle	DE-1636	2603540068	August 29, 2016	August 1, 2018
New Castle	DE-1642	2603630372	January 25, 2017	July 31, 2018
New Castle	DE-1658	1801900296	December 23, 2021	December 14, 2021
New Castle	DE-1679	2604900029	March 23, 2018	September 6, 2022
New Castle	DE-1679	2604900031	March 23, 2018	September 6, 2022
New Castle	DE-1679	2604900039	March 23, 2018	September 6, 2022
New Castle	DE-1679	2604900041	March 23, 2018	September 6, 2022
New Castle	DE-1681	1000100015	May 31, 2018	November 23, 2020
New Castle	DE-1681	1000100016	May 31, 2018	November 23, 2020
New Castle	DE-1681	1000100017	May 31, 2018	November 23, 2020
New Castle	DE-1681	1000100019	May 31, 2018	November 23, 2020
New Castle	DE-1681	1000100020	May 31, 2018	November 23, 2020
New Castle	DE-1681	1000100021	May 31, 2018	November 23, 2020
New Castle	DE-1681	1000100022	May 31, 2018	November 23, 2020
New Castle	DE-1681	1000100077	May 31, 2018	November 23, 2020
New Castle	DE-1681	1000100078	May 31, 2018	November 23, 2020
New Castle	DE-1681	2605000031	May 31, 2018	November 23, 2020
New Castle	DE-1681	2605000031	May 31, 2018	November 23, 2020
New Castle	DE-1681	2605700006	May 31, 2018	November 23, 2020
New Castle	DE-1681	2605700007	May 31, 2018	November 23, 2020
New Castle	DE-1681	2605700008	May 31, 2018	November 23, 2020
New Castle	DE-1681	2605700009	May 31, 2018	November 23, 2020
New Castle	DE-1681	2605700010	May 31, 2018	November 23, 2020
New Castle	DE-1681	2605700011	May 31, 2018	November 23, 2020

County	ID	Parcel ID	Certification Date	COCR Date
New Castle	DE-1681	2605700012	May 31, 2018	November 23, 2020
New Castle	DE-1681	2605700013	May 31, 2018	November 23, 2020
New Castle	DE-1681	2605700047	May 31, 2018	November 23, 2020
New Castle	DE-1681	2605700050	May 31, 2018	November 23, 2020
New Castle	DE-1681	2605700054	May 31, 2018	November 23, 2020
New Castle	DE-1681	2605700056	May 31, 2018	November 23, 2020
New Castle	DE-1681	2605700057	May 31, 2018	November 23, 2020
New Castle	DE-1681	2605700058	May 31, 2018	November 23, 2020
New Castle	DE-1683	2602610096	June 21, 2018	January 15, 2020
New Castle	DE-1684	613900017	August 9, 2018	May 14, 2020
New Castle	DE-1703	608400473	July 2, 2019	April 21, 2022
New Castle	DE-1703	608400474	July 2, 2019	April 21, 2022
New Castle	DE-1703	608400475	July 2, 2019	April 21, 2022
New Castle	DE-1715	605100042	January 22, 2020	February 23, 2022
New Castle	DE-1720	1102300025	March 25, 2020	April 21, 2022
New Castle	DE-1721	2602230225	March 31, 2020	November 28, 2022
New Castle	DE-1736	1900200237	September 9, 2020	May 25, 2022
New Castle	DE-1740	1900200269	October 15, 2020	April 21, 2022
New Castle	DE-1740	2603240012	October 15, 2020	April 21, 2022
New Castle	DE-1760	1000100038	March 29, 2021	September 1, 2022
New Castle	DE-1579	2604840048	May 2, 2014	January 4, 2016
New Castle	DE-1579	2604840051	May 2, 2014	January 4, 2016
New Castle	DE-1579	2604840053	May 2, 2014	January 4, 2016
New Castle	DE-1579	2604840054	May 2, 2014	January 4, 2016
New Castle	DE-1579	2604840055	May 2, 2014	January 4, 2016
New Castle	DE-1579	2604930004	May 2, 2014	January 4, 2016
New Castle	DE-1579	2604930006	May 2, 2014	January 4, 2016
New Castle	DE-1579	2604930007	May 2, 2014	January 4, 2016
New Castle	DE-1579	2604930008	May 2, 2014	January 4, 2016
New Castle	DE-1579	2604930009	May 2, 2014	January 4, 2016
New Castle	DE-1579	2604930010	May 2, 2014	January 4, 2016
New Castle	DE-1579	2604930013	May 2, 2014	January 4, 2016
New Castle	DE-1429	2602910197	January 4, 2008	February 2, 2016
New Castle	DE-1464	2000100094	March 20, 2009	May 3, 2018
New Castle	DE-1488	2606600001	May 26, 2010	July 22, 2016
New Castle	DE-1577	1001000017	April 22, 2014	November 4, 2020
Sussex	DE-0149	334-6.00-504.02	January 29, 2009	November 8, 2019
Sussex	DE-0149	334-6.00-504.03	January 29, 2009	November 8, 2019
Sussex	DE-0149	334-6.00-504.06	January 29, 2009	November 8, 2019
Sussex	DE-0149	334-6.00-504.07	January 29, 2009	November 8, 2019
Sussex	DE-0190	335-8.15-47.00	June 26, 2015	August 23, 2018

<b>County</b>	<b>ID</b>	<b>Parcel ID</b>	<b>Certification Date</b>	<b>COCR Date</b>
Sussex	DE-0190	335-8.15-48.00	June 26, 2015	August 23, 2018
Sussex	DE-0190	335-8.15-48.01	June 26, 2015	August 23, 2018
Sussex	DE-0287	132-1.15-16.00	October 31, 2006	February 19, 2019
Sussex	DE-1517	235-20.08-6.00	November 30, 2011	November 19, 2015
Sussex	DE-1527	335-8.15-40.00	July 27, 2012	June 20, 2016
Sussex	DE-1527	335-8.15-40.01	July 27, 2012	June 20, 2016
Sussex	DE-1527	335-8.15-40.02	July 27, 2012	June 20, 2016
Sussex	DE-1527	335-8.15-41.02	July 27, 2012	June 20, 2016
Sussex	DE-1619	530-10.00-11.00	September 16, 2015	August 23, 2018
Sussex	DE-1625	332-3.00-56.00	November 20, 2015	April 18, 2018
Sussex	DE-1686	330-11.00-42.01	August 29, 2018	July 21, 2020
Sussex	DE-1686	330-11.00-42.00	August 29, 2018	July 21, 2020