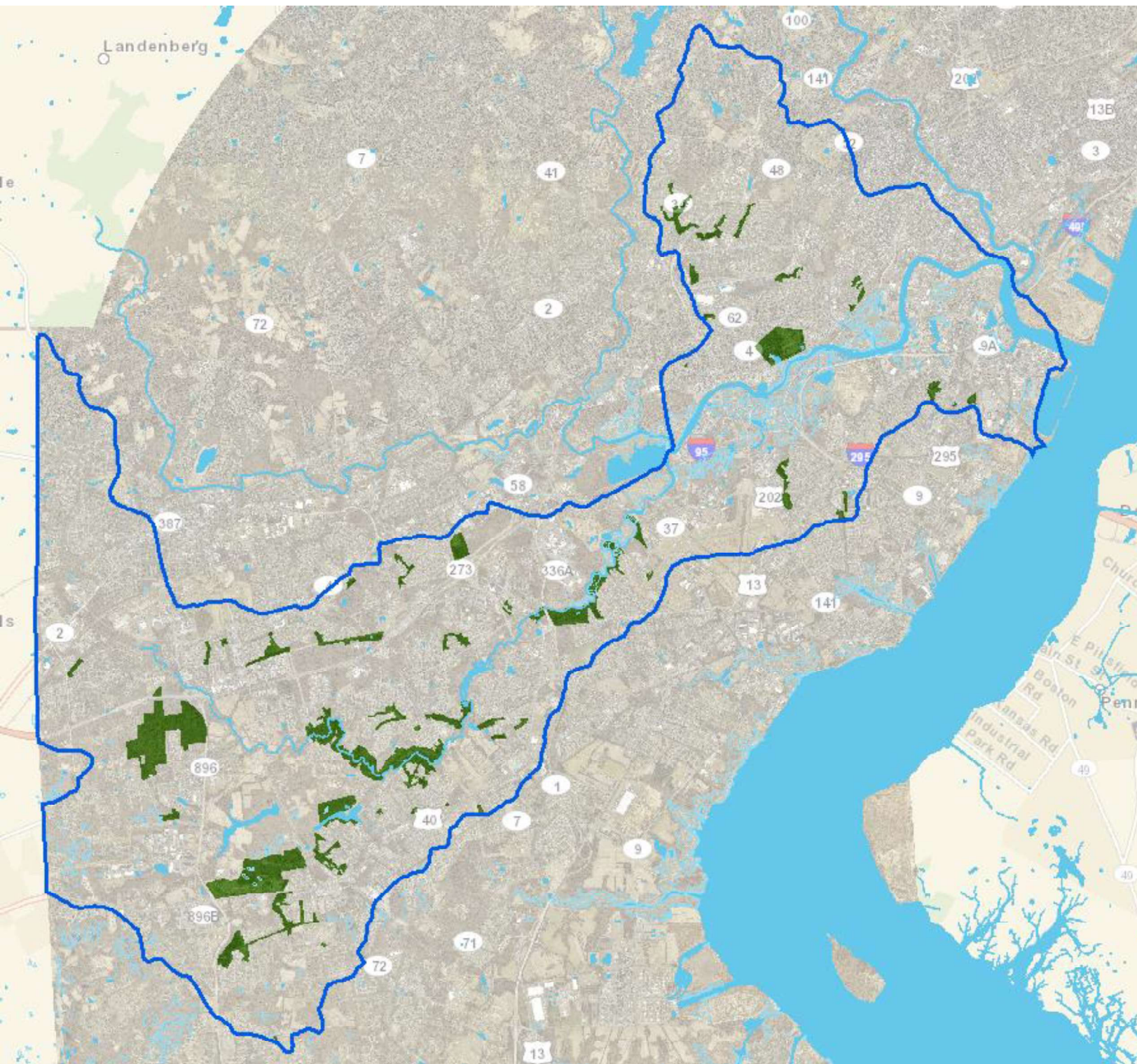


# New Castle County Public Works

January 26, 2023

Restoring Wilmington's Rivers





NCC Public Works  
Christina River Watershed

Parks Division  
1,900 acres of land  
65 Parks Total  
36 Passive Open Space areas

Stormwater Division  
Environmental Programs  
MS4 Permit



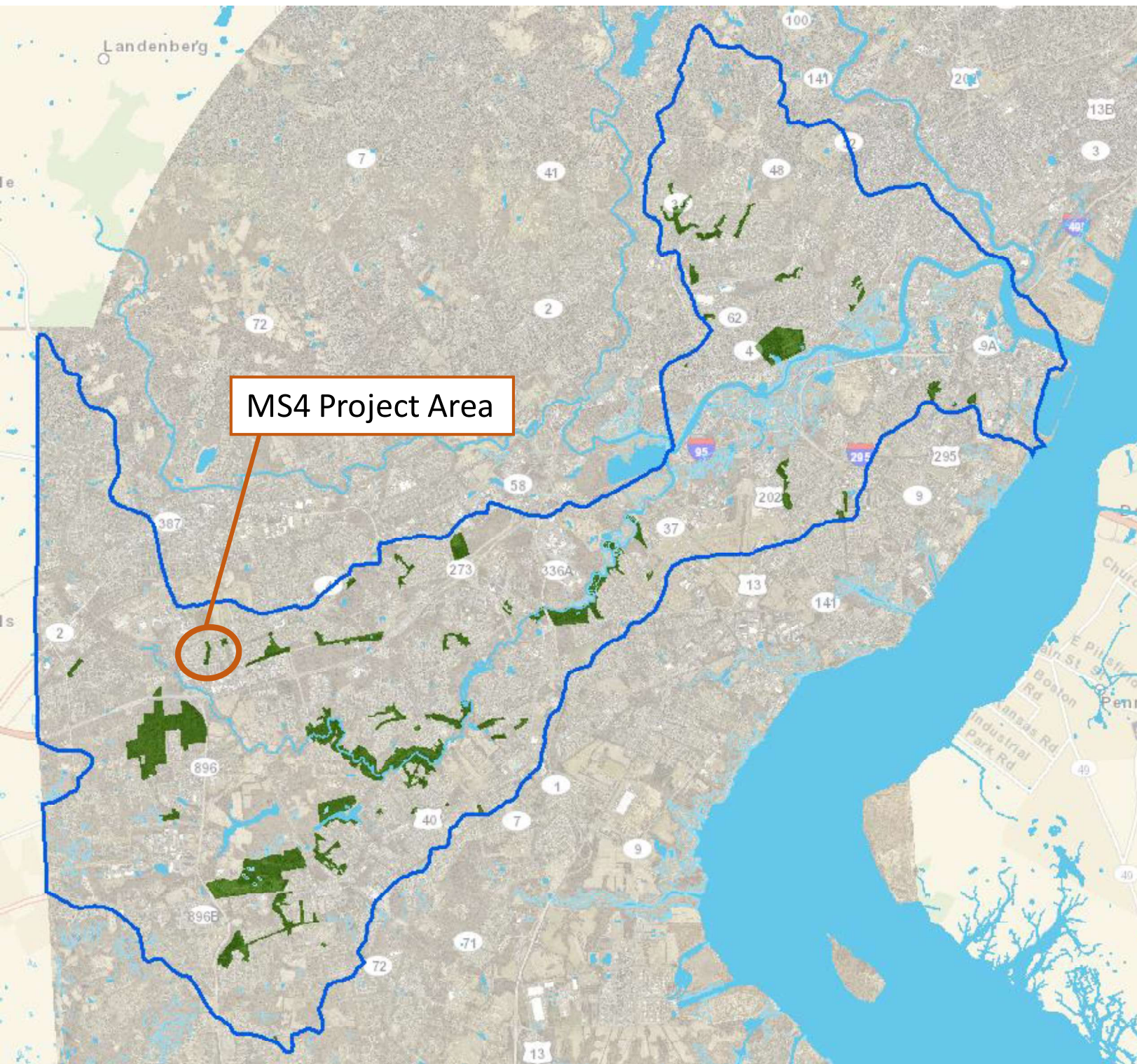


# Keep New Castle County clean and green

[PLEDGE NOW!](#)



**BECOME A CLEAN STREAM CHAMPION!**



## Robscott Manor Park Stream Restoration

- Unnamed tributary to the Christina River
- Restore 1,600 linear feet of stream
- Treat runoff from 12 DelDot storm drains
- Add floodplain adjacent to stream-
  - Slowing flow
  - Improving water quality
  - Reducing sedimentation
- Add pedestrian trail facilities within the park

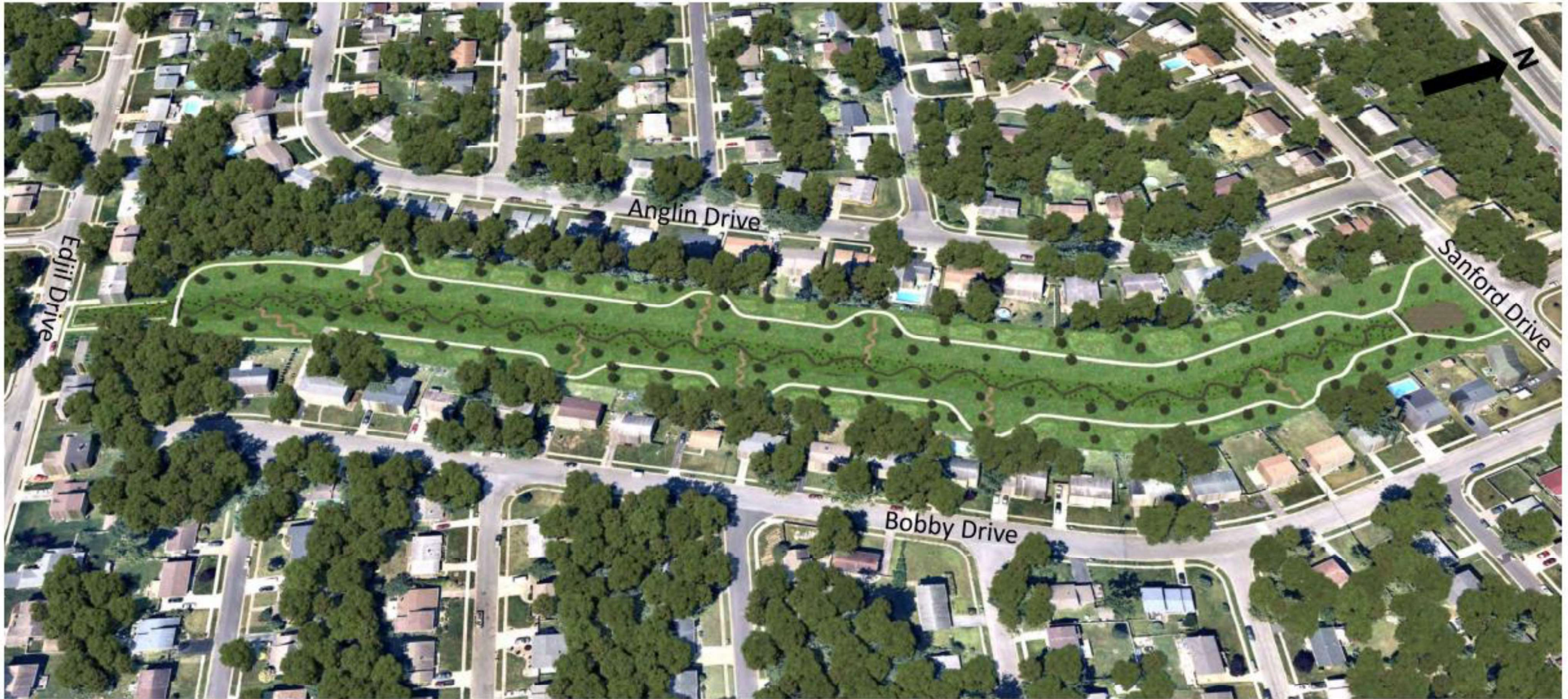
Partnership project with DelDot



Robscott Manor  
Existing Conditions

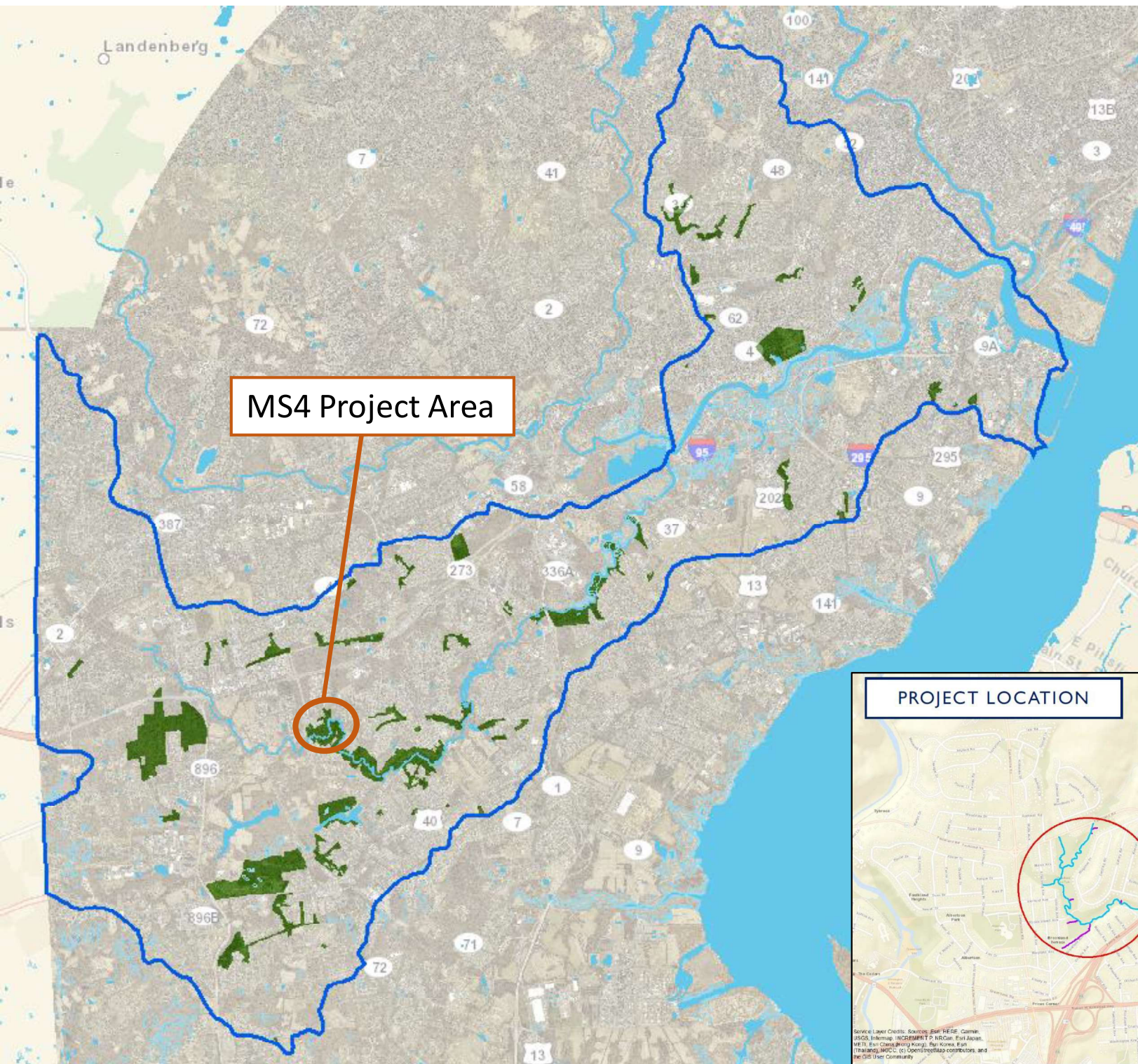
Construction Scheduled for  
Spring 2023





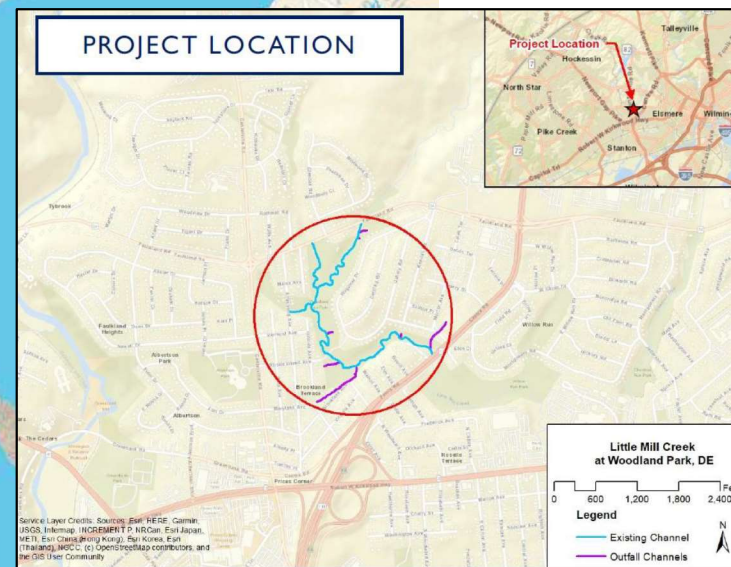
Robscott Manor Park Stream Restoration  
Virtual Workshop Rendering





## Woodland Run Park Stream Restoration

- Little Mill Creek tributary to the Christina
- Restore approx. 3,000 linear feet of stream
- Add floodplain adjacent to stream-  
Slowing flow  
Improving water quality  
Reducing sedimentation
- Formalize pedestrian access in the park
- Relocate park infrastructure out of the floodplain

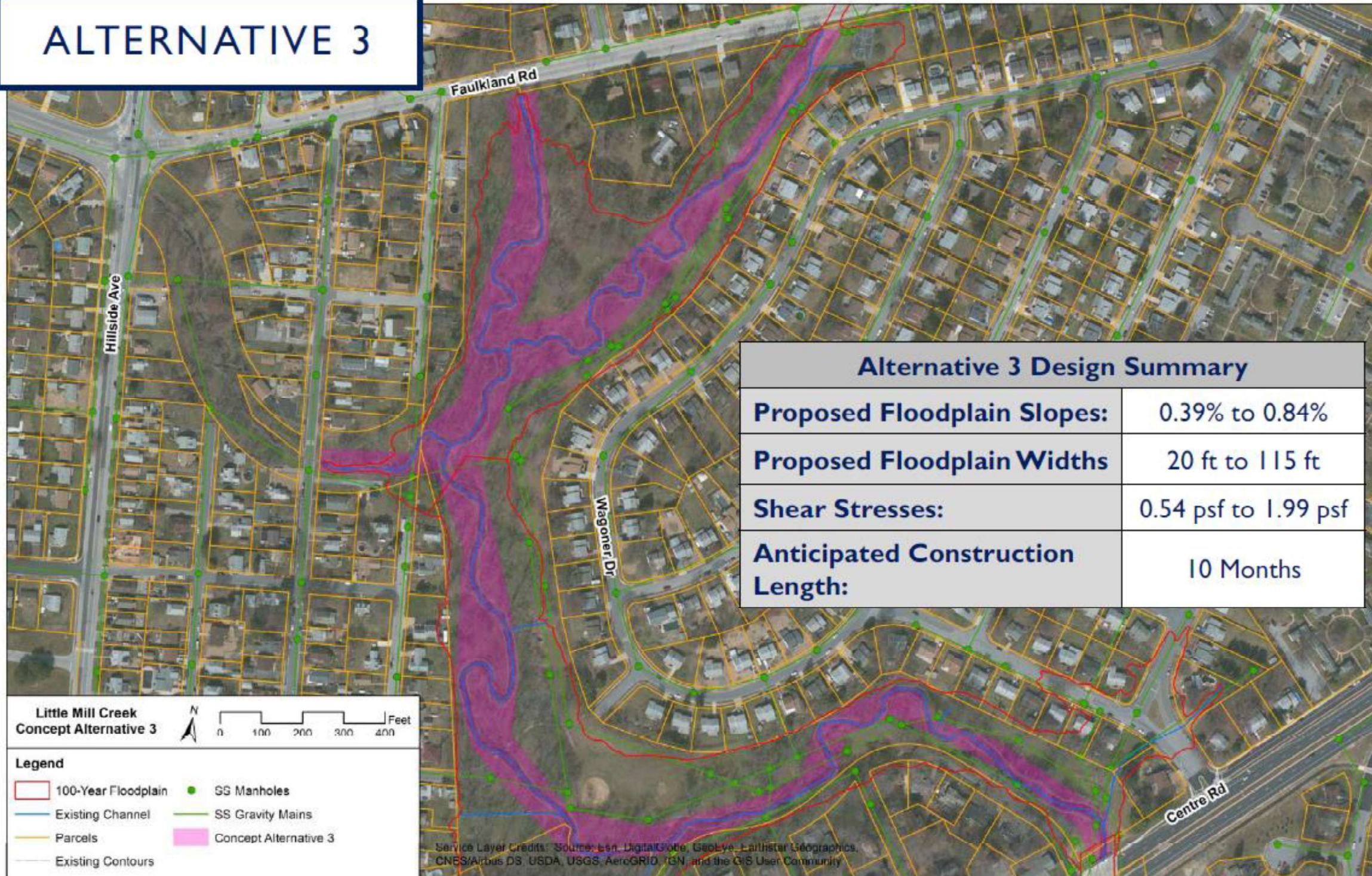


# ALTERNATIVE 3

Wetland  
Creation

Outfall  
Stabilization

Lowest impact  
to trees



Alternative 3 Design Summary	
Proposed Floodplain Slopes:	0.39% to 0.84%
Proposed Floodplain Widths	20 ft to 115 ft
Shear Stresses:	0.54 psf to 1.99 psf
Anticipated Construction Length:	10 Months

**Little Mill Creek  
Concept Alternative 3**

0 100 200 300 400 Feet

**Legend**

- 100-Year Floodplain
- Existing Channel
- Parcels
- Existing Contours
- SS Manholes
- SS Gravity Mains
- Concept Alternative 3

Service Layer Credits: Source: Esri, DigitalGlobe, GeoEye, Earthstar Geographics, CNES/Airbus DS, USDA, USGS, AeroGRID, IGN, and the GIS User Community





## NCC Commitment to CBR4

Few land holdings within the study area

Banning Park- 152 acre Regional Park  
Active Recreation Park  
Opportunities for environmental  
enhancements