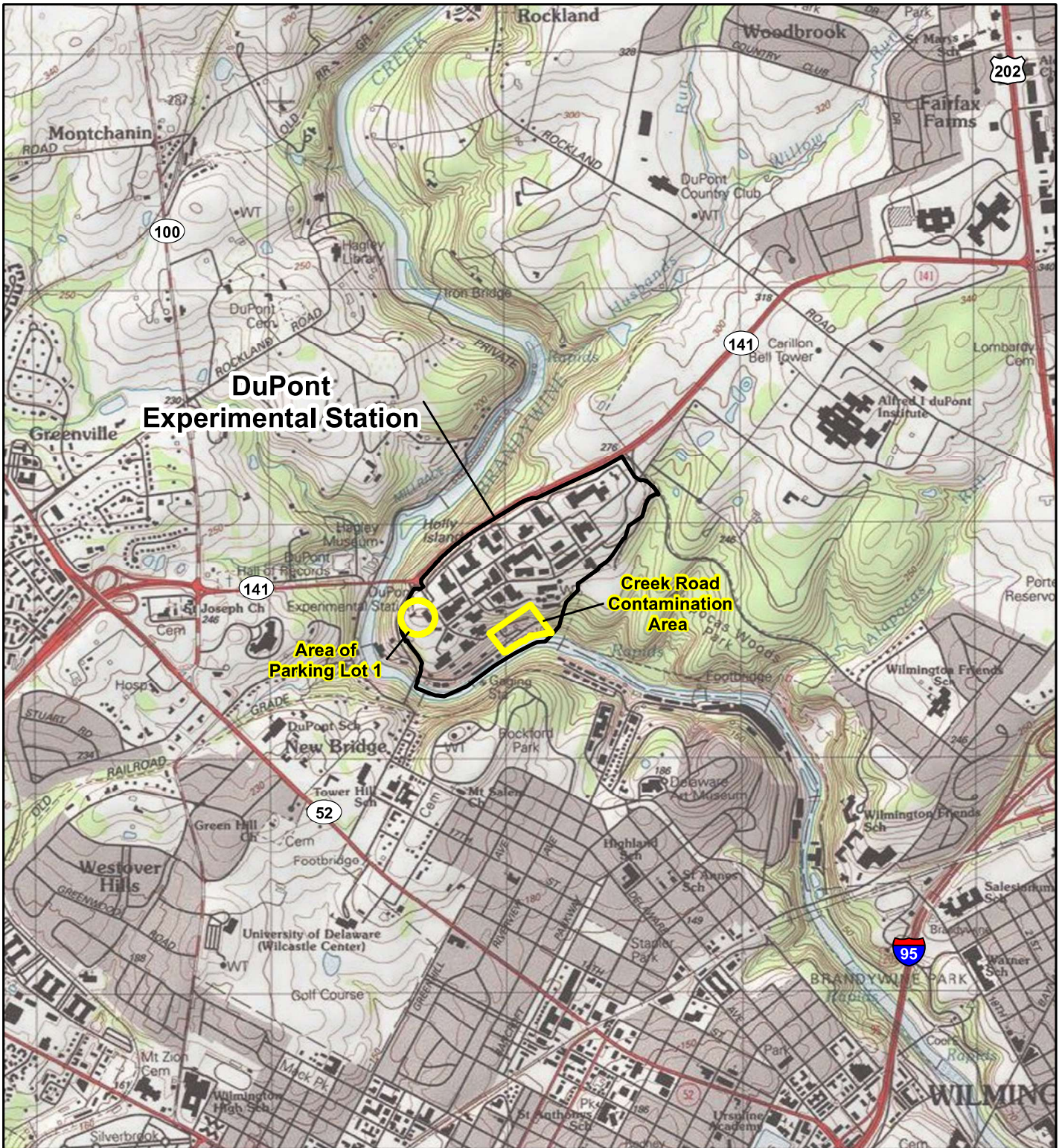


## Figures





**LEGEND**

Property Boundary

USA Topo Maps Source: USGS  
1:24K Topographic Map;  
Copyright:© 2013 National Geographic Society, i-cubed

**AECOM**

AECOM  
Sabre Building, Suite 300  
4051 Ogletown Road  
Newark, DE 19713

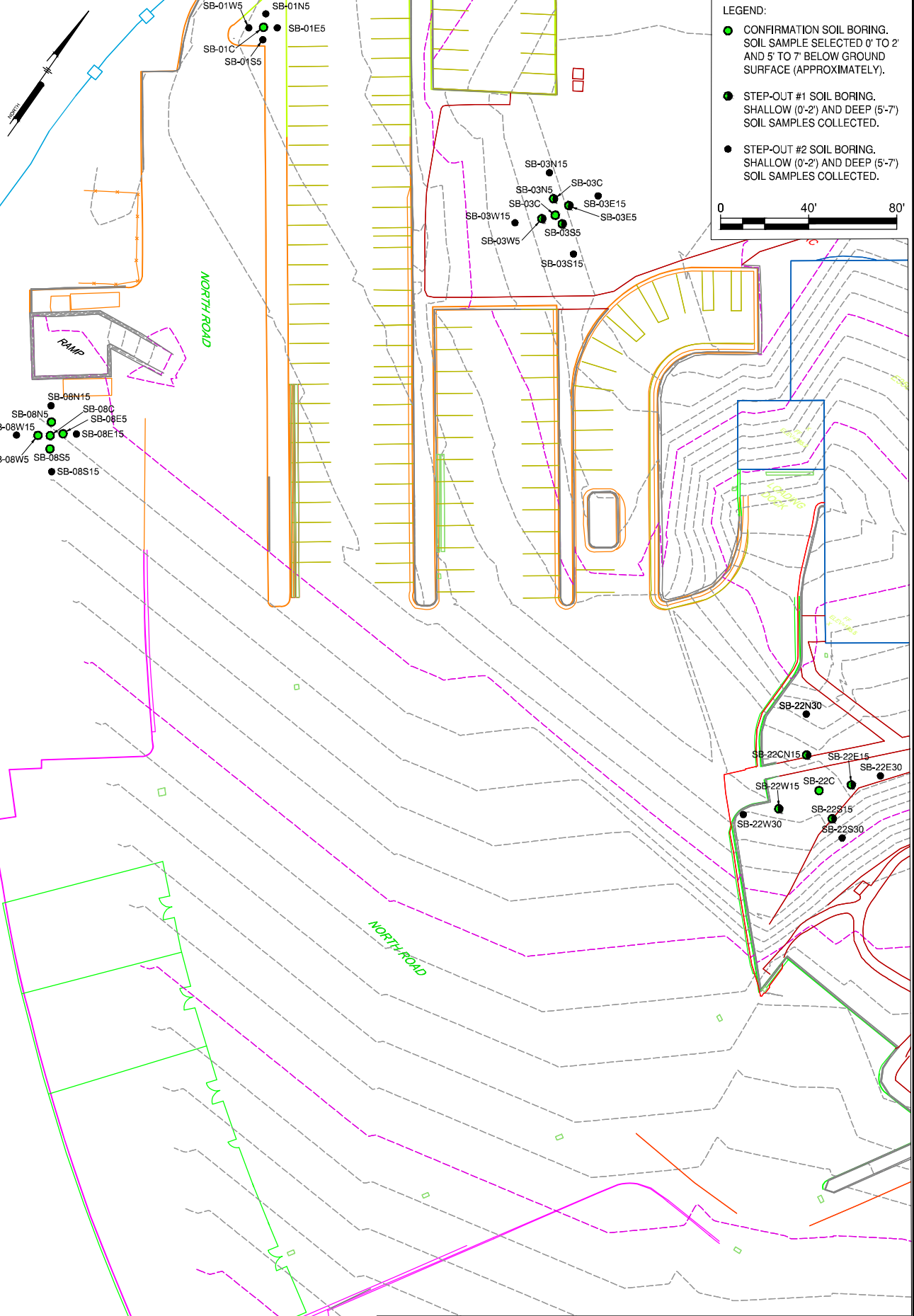
0 1,000 2,000  
Feet  
1 inch = 2,000 feet

MAP FORMATTED FOR "A" (8.5" X 11") SIZE SHEET.  
TEXT SCALE NOT VALID FOR DIFFERENT PAGE SIZE.

SITE LOCATION MAP	
DuPont Experimental Station Wilmington, DE	
TASK NUMBER: PHS202	PROJECT NUMBER: 60633074
DESIGNED BY: C. DUFFY	DATE: 9/13/2021
DRAWN BY: C. DUFFY	FIGURE NUMBER: 1
DATA QUALITY CHECK BY: P. CHEN	







L:\DCS\Projects\Dupont\ES - Station\Cook\6060285\Drawings\Fig 2 - Confirm & Step-out Detail SB Loc Sept 2019.dwg, 9/13/2021 10:49 AM, User: David E. (Newark), P:\P\6060285.dwg, User:119, 1'-0" = 1'-0"

DESIGNED	IN/RS
P. CHEN DSW	
D. LITTEL DSW	
P. CHEN APPROVAL (CONSTRUCTION)	

**AECOM**

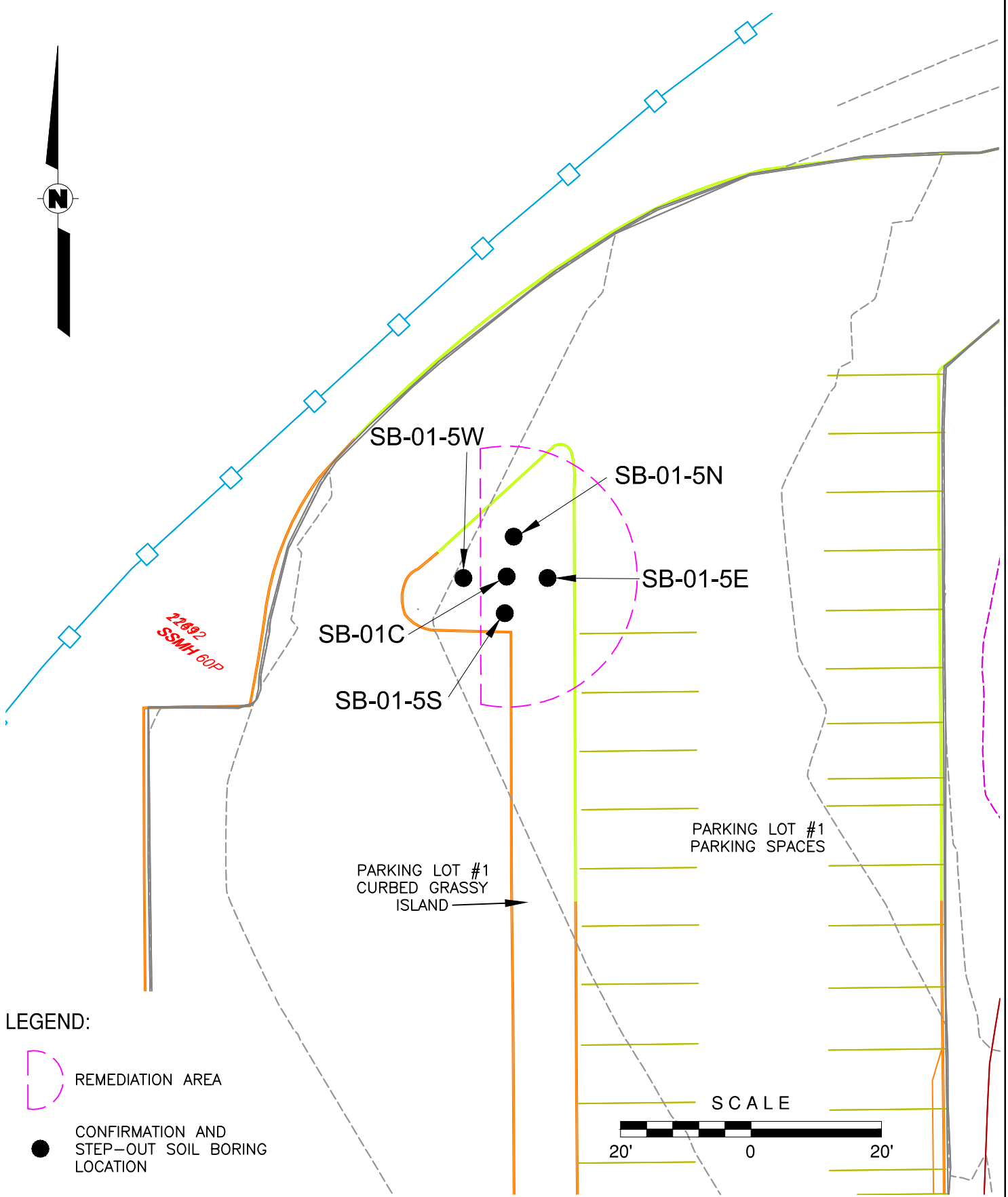
Sabre Building, Suite 300  
 4051 Oglethorpe Road  
 Newark, Delaware 19713  
 Phone: 302-781-5900

CONFIRMATION AND STEP-OUT  
 SOIL BORING LOCATIONS  
 SEPTEMBER 2019



PARKING LOT 1  
 DUPONT EXPERIMENTAL STATION  
 WILMINGTON, DELAWARE

SCALE	DATE	PROJECT NO.	REVISION
AS SHOWN	1/30/20	60609285	3

L:\DCS\Projects\Dupont\Ex Station\Cad\60609285\drawings\Fig 3 to 6 - Sept 2019 Boring Loc Map with Current BG UPDATED 4-15-20.dwg, 9/13/2021 12:31 PM, Littell, David E (Newark), PDF995.pc3, Letter, 1:1



**LEGEND:**

-  REMEDIATION AREA
-  CONFIRMATION AND STEP-OUT SOIL BORING LOCATION

DESIGNED BY: P. CHEN
DRAWN BY: D. LITTEL
DATA QUALITY CHKD: P. CHEN
APPROVED BY:

**AECOM**

Sabre Building, Suite 300  
4051 Ogletown Road  
Newark, Delaware 19713  
Phone: 302-781-5900

AOC SB-01 SEPTEMBER 2019 BORING LOCATIONS AND PROPOSED REMEDIATION AREA
<b>PARKING LOT 1 DUPONT EXPERIMENTAL STATION WILMINGTON, DELAWARE</b>

PROJECT NO. 60609285
DATE 1/30/20
FIGURE No: <b>4</b>

L:\DCS\Projects\Dupont\Ex Station\Cad\60609285\drawings\Fig 3 to 6 - Sept. 2019 Boring Loc Map with Current BG UPDATED 4-15-20.dwg, 9/13/2021 12:32 PM, Littell, David E. (Newark), PDF995.pc3, Letter, 1:1



SOUTHWEST  
CORNER OF  
PARKING LOT #1


1157  
ELMH

SB-13-15N  
 SB-13-5N SB-13C  
 SB-13-15E  
 SB-13-5E  
 SB-13-5S  
 SB-13-15S  
 SB-13-15W  
 SB-13-5W

GRAVEL  
THRU-WAY

**LEGEND:**

 REMEDIATION AREA

 CONFIRMATION AND  
STEP-OUT SOIL BORING  
LOCATION

SCALE



DESIGNED BY: P. CHEN
DRAWN BY: D. LITTEL
DATA QUALITY CHKD: P. CHEN
APPROVED BY:



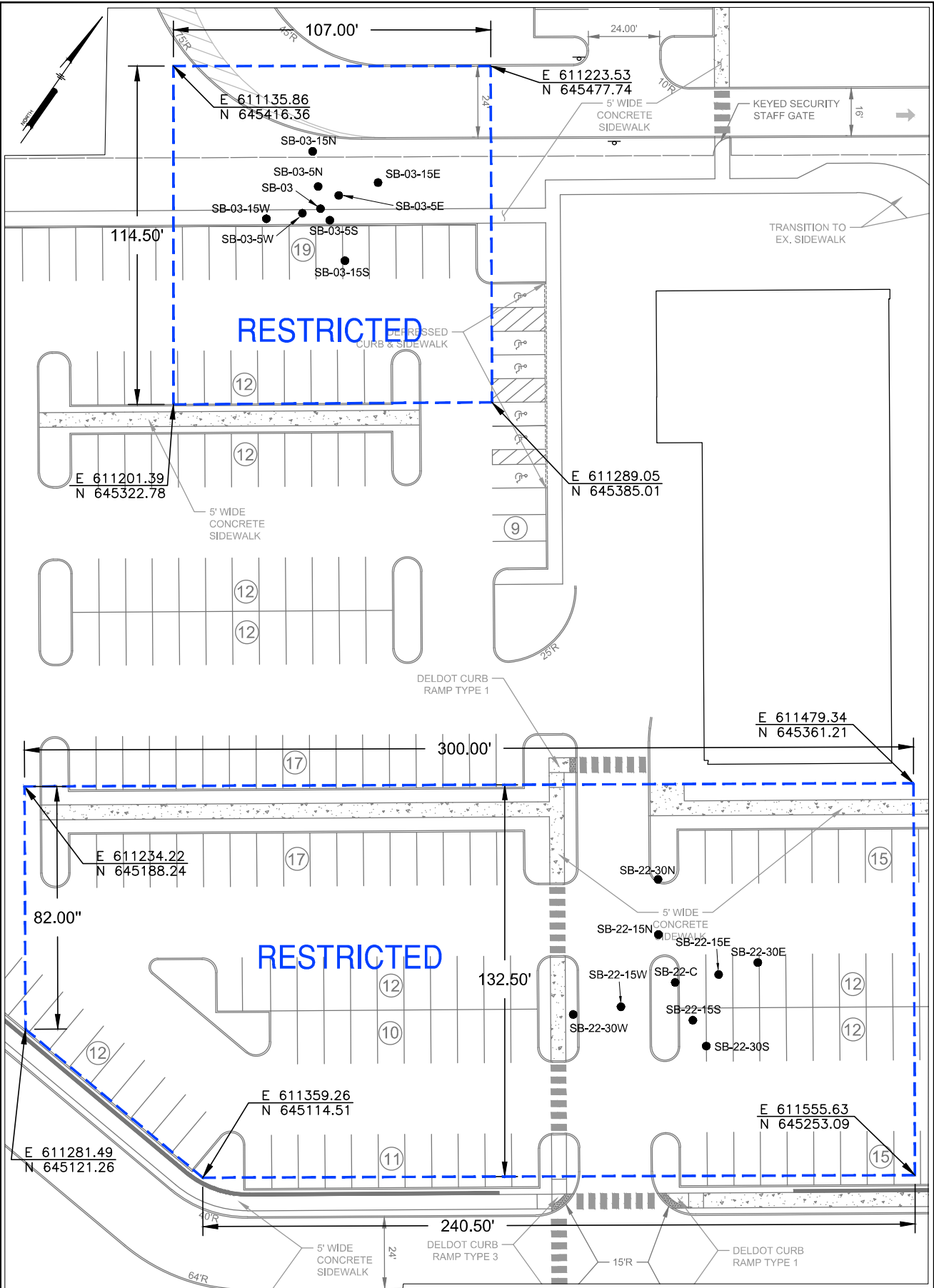
Sabre Building, Suite 300  
4051 Ogletown Road  
Newark, Delaware 19713  
Phone: 302-781-5900

AOC SB-13 SEPTEMBER 2019 BORING LOCATIONS AND PROPOSED REMEDIATION AREA
PARKING LOT 1 DUPONT EXPERIMENTAL STATION WILMINGTON, DELAWARE

PROJECT NO. 60609285
DATE 05/27/20
FIGURE No: <b>5</b>



L:\DCS\Projects\Dupont\ES - Station\Arch\60600406\Drawings\2019 - New Data Posting Figures\Proposed ES.dwg, 9/13/2021 10:43 AM, Littel, David E. (Newark), P:\P95\p95 User119, 1'-0" = 1'-0"



**LEGEND:**

- CONFIRMATION AND STEP-OUT SOIL BORING LOCATION
- ▭ PROPOSED ENVIRONMENTAL COVENANT AREA

DESIGNED	IN CHARGE
P. CHEN (P51W)	
D. LITTEL (P5040)	
P. CHEN (APPROVAL/3/21/20)	
APPROVED (CONSTRUCTION)	



Sabre Building, Suite 300  
 4051 Oglethorpe Road  
 Newark, Delaware 19713  
 Phone: 302-781-5900

PROPOSED ENVIRONMENTAL  
 COVENANT AREAS FOR  
 SB-03 AND SB-22  
 PARKING LOT 1  
 DUPONT EXPERIMENTAL STATION  
 WILMINGTON, DELAWARE

SCALE	DATE	PROJECT NO.	SHEET NO.
AS SHOWN	05/27/20	60600406	6