



STATE OF DELAWARE
**DEPARTMENT OF NATURAL RESOURCES AND
ENVIRONMENTAL CONTROL**

DIVISION OF WASTE AND HAZARDOUS SUBSTANCES
89 KINGS HIGHWAY
DOVER, DELAWARE 19901

PHONE: (302) 739-9403
FAX: (302) 739-5060

**REMEDICATION
SECTION**

**FACT SHEET
March 7, 2021**

Motiva Enterprises LLC (Motiva)

Location Address: Delaware City Refinery
4550 Wrangle Hill Road
Delaware City, DE 19706
DED002329738; File Code: 16

Corrective Action Permit:

The Department of Natural Resources and Environmental Control (DNREC) issues corrective action permits to authorize the implementation of corrective actions as necessary to protect human health and the environment. DNREC issued Corrective Action Permit No. HW09A13 (the Permit) for Motiva to implement corrective action at Motiva Enterprises LLC Delaware City Refinery in Delaware City, Delaware (Figure 1, Site Map). DNREC proposes to issue a new permit to continue hazardous waste corrective action activities at the locations of the Solid Waste Management Units (SWMUs) and Areas of Concern (AOCs) at this facility (Figure 2, SWMU Location Map).

Facility Location and Activity Description:

The Delaware City Refinery (DCR) is located on a 5,050-acre tract of land located approximately 1 mile north of Delaware City, Delaware. The land north and south of the Refinery is mostly farmland, with the exception of several industrial complexes located immediately north and west of the Refinery. The eastern property boundary of DCR borders the Delaware River. The manufacturing facilities occupy approximately 1,000 of the 5,050 acres of the property. The Refinery produces mainly gasoline and heating oil. The Refinery began operation in 1956. Star Enterprise owned and operated the DCR until it was sold to Motiva Enterprises, LLC (Motiva) in 2000. In May 2004, Motiva sold the DCR to Premcor Refining Group, Inc. The Refinery was again sold in September 2005 to Valero. Valero sold the Refinery to PBF Energy on June 1, 2010. PBF Energy currently owns and operates the DCR. Motiva retains the environmental liability for the permitted waste units and historic contamination.

Statutory and Regulatory Basis:

The Refinery entered into the U.S Environmental Protection Agency Corrective Action program through a permit in November 1988. In September 2003, DNREC issued a Corrective Action Permit to Motiva and is now the lead agency for Corrective Action for this facility. Several phases of investigation and

corrective actions have been performed. Thirty-six (36) Solid Waste Management Units (SWMUs) were identified and investigated and areas of groundwater contamination were delineated.

The 2003 DNREC Corrective Action Permit required Motiva to perform interim clean-up measures, and specifically to address two (2) SWMUs, Guard Basin No. 4 (GB4) and the Oily Sediment Area (OSA). Interim Measures Reports addressing GB4 and the OSA were submitted in August 2006 and approved by DNREC in June 2010. An amendment to the GB4 Interim Measures Report was approved by DNREC in February 2012 to address a change in design requested by DNREC. The Permit also required a Phase II RCRA Facility Investigation (RFI) workplan, submitted in August 2005. In August 2007, DNREC granted Motiva a conditional approval to perform Phase II RFI activities. A Phase II RFI SWMU report, Phase II RFI Groundwater Report, Baseline Ecological Risk Assessment (BERA), and Human Health Risk Assessment (HHRA) were all submitted in 2010. A Response to Comments for the Phase II RFI Groundwater Report was submitted on May 2, 2011, which was responded to by DNREC on February 22, 2012. Motiva in turn responded to this on July 25, 2012. On March 1, 2012, a response to comments on the HHRA and SWMU report was submitted to DNREC. DNREC provided comments on the HHRA submittal on October 4, 2012. A final approval of the BERA was issued on January 11, 2013.

Public Participation:

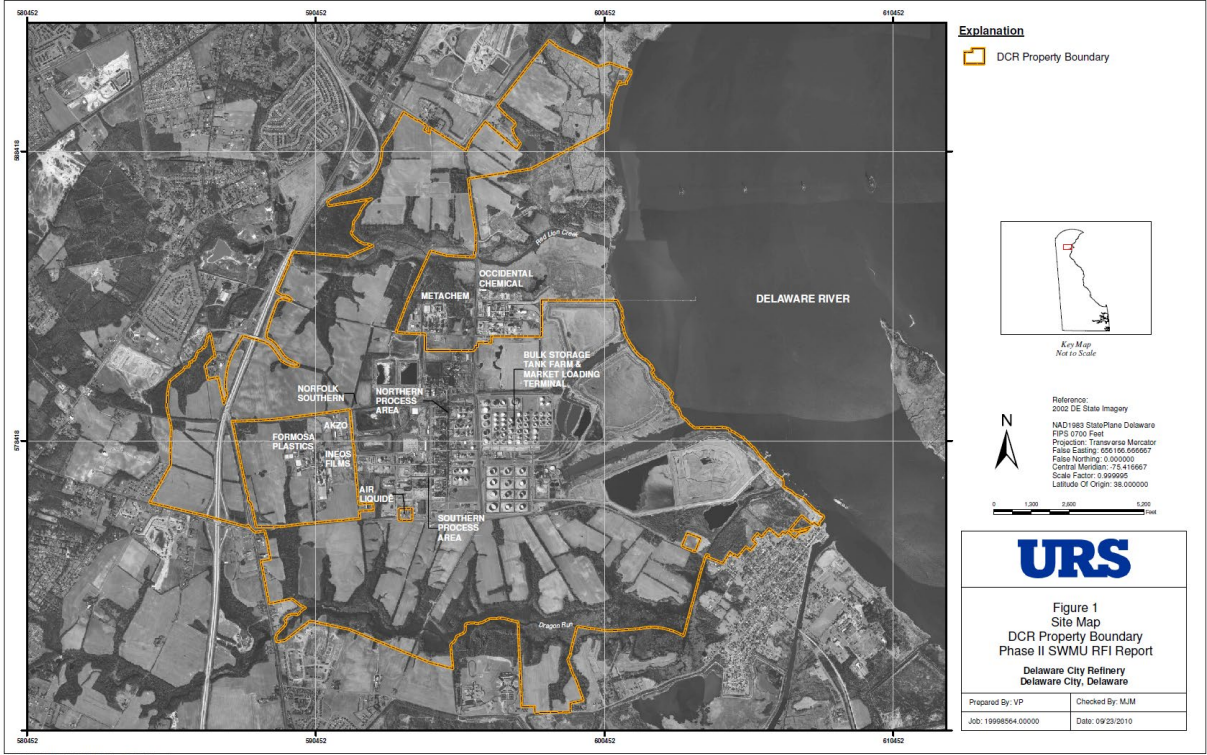
Persons wishing to submit comments, or request a public hearing, are required to submit same in writing no later than April 20, 2021, which is 45-days after this notice is published. The Secretary shall hold a public hearing whenever he finds, on the basis of the requests, a significant degree of public interest, or at the Department's discretion. Written comments must be sent to:

Wendy March, CHMM
Department of Natural Resources and Environmental Control
Division of Waste and Hazardous Substances
Remediation Section
89 Kings Highway
Dover, DE 19901

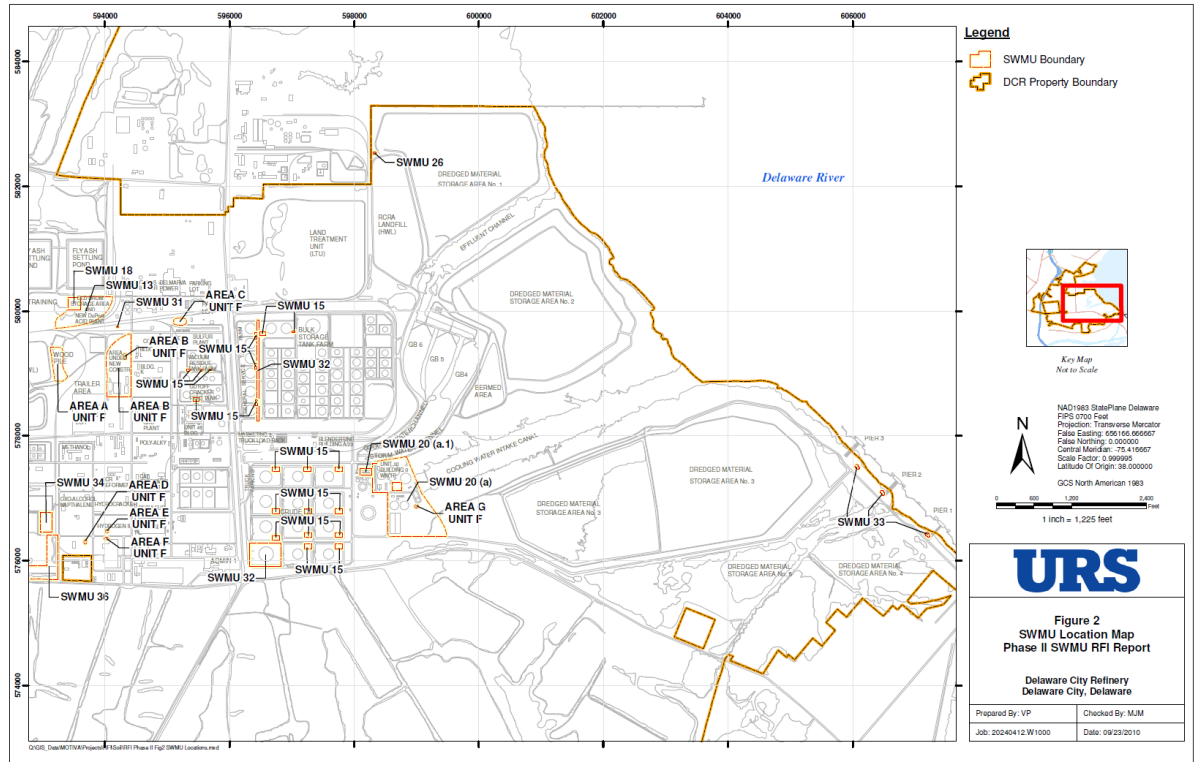
RE: DED002329738; File 16

To schedule an appointment to review this material or to obtain additional information on this project, contact Ms. Wendy March of the DNREC at (302) 739-9403.

Public Notice Date: March 7, 2021



UGS: D:\MOT\N\Phase II RFI\Phase II Fig 1 Site Map.mxd



UGS: D:\MOT\N\Phase II RFI\Phase II Fig 2 SWMU Locations.mxd