

“Connecting the Bulbs”



HELP Initiatives Program Activities
Energy Efficiency Advisory Council
July 11, 2018

Talking Points:

1. Mission
2. Theme
3. Connecting Programs (Touch Points)
4. Closing Remarks

Mission:

Meaning: H.E.L.P. (Healthy Home, Energy Efficient, Lead Safe, People Centric)

Mission: Communicate, Coordinate, Implement and Measure Impact of low income energy efficiency services to improve quality of life and reduce dependency on social service based programs.



Logo illustrates the universal symbol for HELP

Theme:

1. Discovering common goals and objectives with “Others” in the same space using funds targeted at a similar scope of work
 - Home Performance,
 - Weatherization Assistance,
 - Behavior Modification,
 - Healthy Homes,
 - Public Safety,
 - Healthy Neighborhood Initiatives,
 - Community Gardens,
 - Brownfield Revitalization,
 - Commercial & Industrial Building Efficiency
2. Connecting Programs like ...

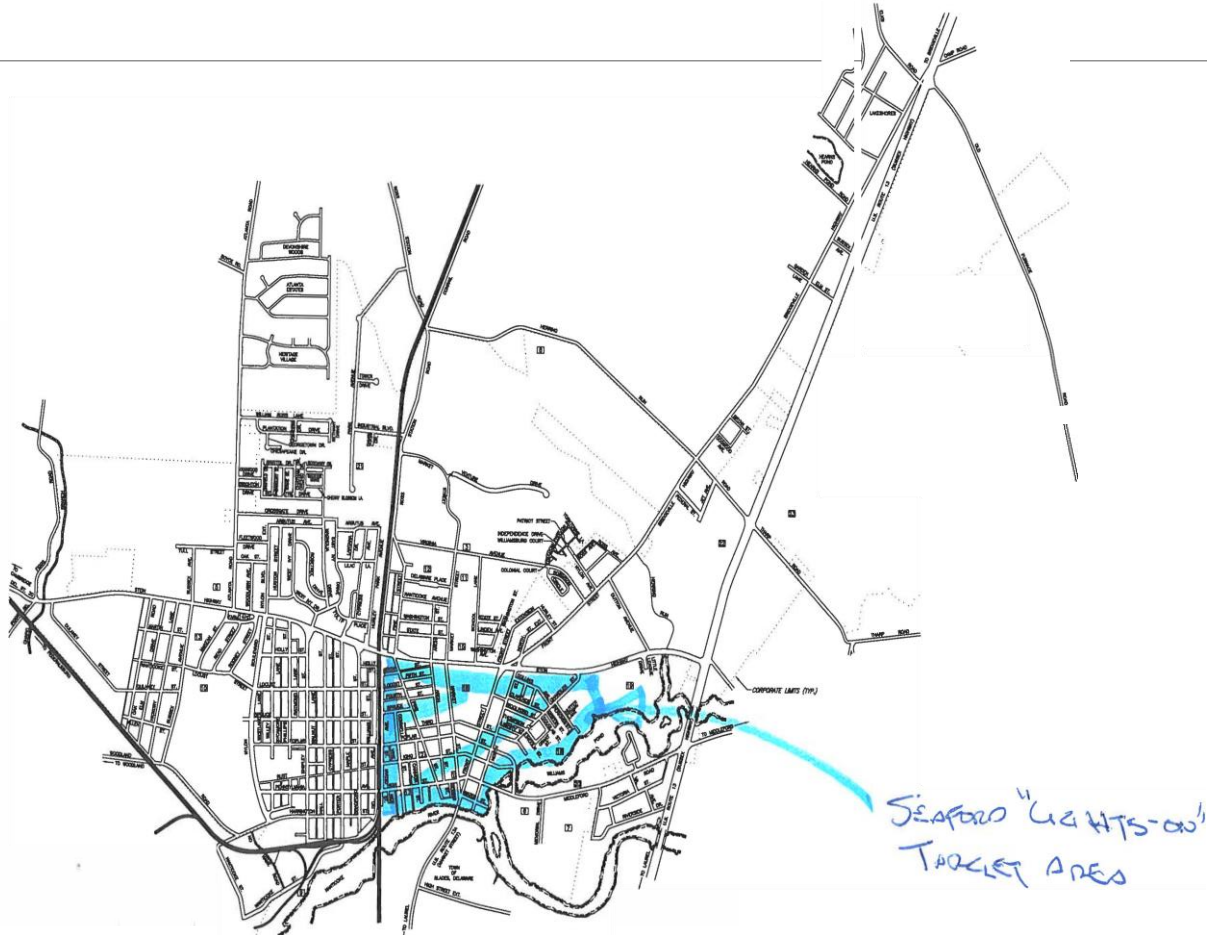
Lights On Dover Strong:



1. Problem – Public Safety
2. Approach – Outreach, Energy Efficiency Education, EE Measure Installation, Referrals to CEC
3. People Served – Restoring Central Dover Area
4. Impact to Scale – Lights On Delaware Strong
5. Community & Stakeholder Engagement – NCALL, Kent Habitat, Carpenters Union, Houses of Worship (HOW's), Law Enforcement, Fire Service

300 Homes installed with Energy Efficiency Measures
and 500 Homes targeted

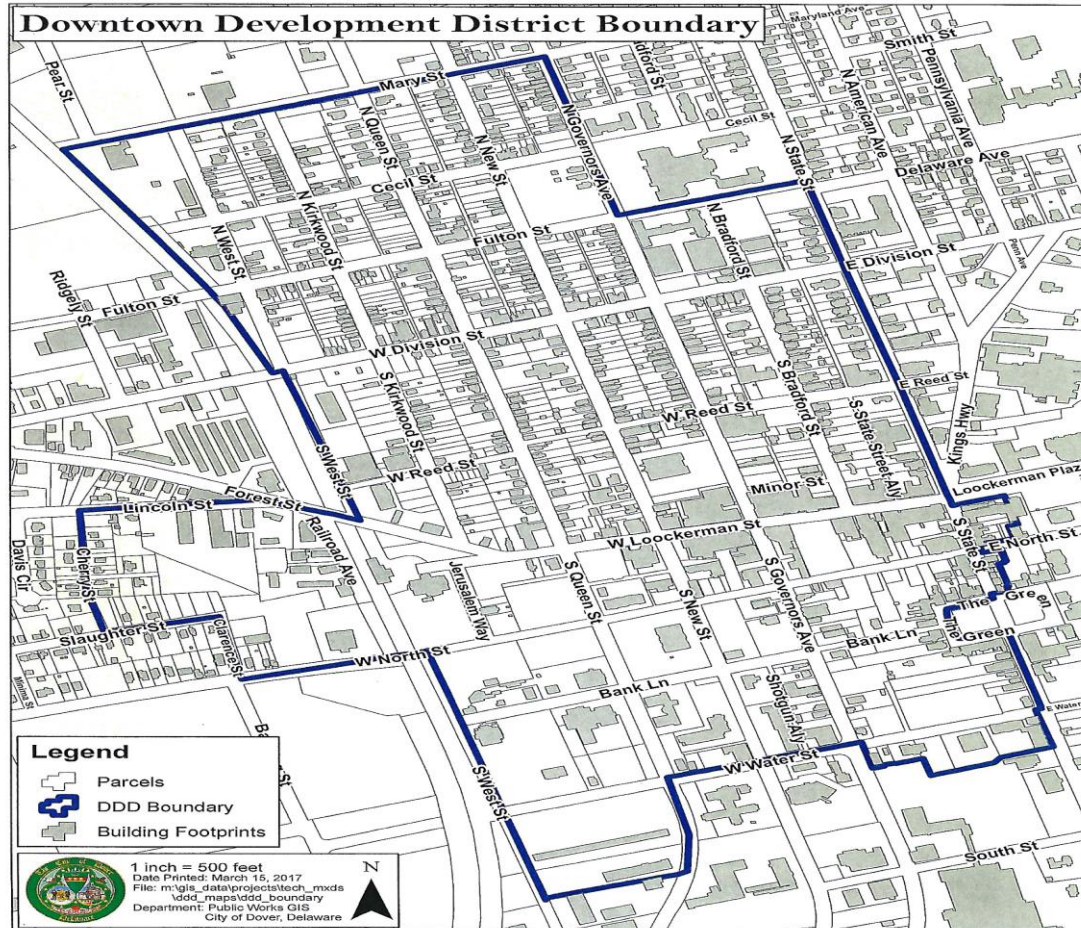
Lights On Seaford Strong:



1. Problem – Public Safety
2. Approach – Outreach, Energy Efficiency Education, Measure Installation, Referral
3. People Served – LI Community, Senior Multi-family Dwelling
4. Impact to Scale - Lights On Delaware Strong
5. Community & Stakeholder Engagement – Sussex Habitat, Carpenters Union, HOW's, Law Enforcement, Fire Service

200 Homes in the Target Area with 500 Homes proposed.

Merchant Lights On Dover Strong:



1. Problem – Public Safety based on City of Dover Parking Study
2. Approach – Identify high risk alley ways and pedestrian walk ways and use commercial grade solar flood lights
3. People Served – Downtown Development District Merchants
4. Impact to Scale – Residential Lights On with Lights On Merchant area at dusk
5. Community & Stakeholder Engagement – Downtown Dover Partnership, Merchants, Law Enforcement

Merchant Lights On Dover Strong: Pilot Locations



Rehab On Dover Strong:



1. Problem – Public Safety, Vacant Property, Blight
2. Approach – Harden, Beautify, Rehab
3. People Served – Community
4. Impact to Scale – Rehab On Delaware Strong
5. Community & Stakeholder Engagement – Landlord, City Code Enforcement, Minority Contractors

Rehab On Dover Strong:



Rehab On Dover Strong:



Vacant Buildings within the Restoring Central Dover Boundary



Vacant Buildings and Rentals within the Restoring Central Dover Boundary

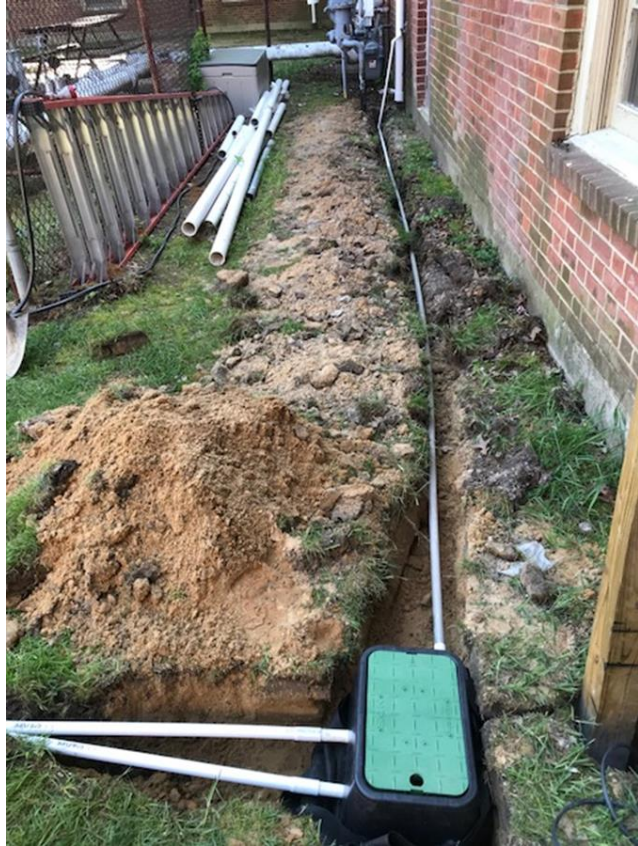


Gardens On Dover Strong: Wesley College



1. Problem – Irrigation Solution
2. Approach – Community garden has a three-fold mission.
 - **Neighborhood Garden** -college and community members collectively contribute their efforts to plan, plant, and manage a shared garden space and enjoy its harvest.
 - **Teaching garden** where college and community members can learn about good gardening practices and healthy cooking and eating and where the garden itself can serve as a model for other backyard and community gardens.
 - **Donation garden** as its size and production grow so that its harvest can be shared with neighborhood shelters, day care centers, food banks, and community members.
3. Impact to Scale – Gardens On Delaware Strong
4. Community & Stakeholder Engagement – NCALL, Wesley College, Delaware State University

Gardens On Dover Strong: Wesley College



Gardens On Dover Strong: Kent County Community Action Agency



110 students attend KCCAA



Energy Efficiency Measures – Solar Flood Lights, Solar Irrigation Controller, Solar Submersible Pump for harvesting rain water

Gardens On Smyrna Strong: Academy of Early Learning



1. Problem – Healthy Eating Habits
2. Approach – children take ownership of plants, paint & decorate community garden boxes, plant fast growing crops (spinach), direct seeding experience, lesson plans for cleaning, cooking and eating healthy meals
3. People Served – K thru 5
4. Energy Efficiency Measures – Solar Flood Lights, Solar Irrigation Controller, Solar Submersible Pump for harvesting rain water
5. Community & Stakeholder Engagement – City of Smyrna, Open Park Healthy Neighborhood Initiative

41 students attend Academy of Early Learning

Gardens On Smyrna Strong:



Contamination + Revitalization = Cultivation:



Former Chesapeake Supply Brownfield – Downtown Dover

1. Problem – redevelop formerly contaminated property or brownfield to spur revitalization
2. Approach – economic development through food production using Aquaponics farming techniques
3. People Served -1/2 mile radius has **2500** residents
4. Impact to Scale – 286 Brownfields in the State of Delaware
5. Community & Stakeholder Engagement – Downtown Dover Partnership, DSU, City of Dover, Kent County, Delaware State Agencies
6. EE Measures – Irrigation and green house temperature controlled by solar

Contamination + Revitalization = Cultivation:



Aquaponics is a system of farming that combines hydroponics (growing plants without soil using nutrients in water) with aquaculture (growing and harvesting fish and aquatic plants) (US EPA, 2016).

Prescriptive Grants & Technical Assistance: CenDel Foundation Building



1. Problem – Energy Inefficiency at Commercial & Industrial Buildings
2. Approach – Provide technical assistance and prescriptive grant writing with service provider coordination for grant approval, EE measure installation and payment
3. People Served – Non Profits & Municipalities
4. Impact to Scale –Energy Efficiency On Delaware Strong Campaign
5. Community & Stakeholder Engagement – DSU & Building Science Courses (i.e. Building Science Principals & Occupant Education)

Downtown Dover Partnership, Communities in Schools: Delaware,
United Way of Delaware, Delaware Parents Association

Connecting the Bulbs with EE Portfolio Programs:

Leverage Program Users to Build Capacity & Facilitate Holistic Approach

- **Delmarva Power EE Program Portfolio**
 - Consumer Products – Residential Lighting, Appliance Rebate, Appliance Recycling
 - Behavior Based Program – Personalized Home Energy Reports & Messaging & Prompts around energy consumption

- **Chesapeake Utilities EE Program Portfolio**
 - Programmable Thermostat Program
 - Behavior & Whole House Retrofit Program (1/2016)

- **Delaware Electric Coop EE Program Portfolio**
 - LED Lighting Measures

- **Delaware Municipal Electric Corporation EE Program Portfolio**
 - Positive Impact of “Lights-On” Campaign facilitates LED Street Lighting Retro-fits
 - Green Energy Fund

- **Sustainable Energy Utility**
 - Community Energy Center(s)
 - Faith Efficiencies
 - Home Energy Checkup Program

Closing Remarks

Charles T. Kistler

(302)236-7773

ckistler@helpinitiative.de.org

Harold Stafford

(302)359-7289

hstafford@helpinitiative.de.org

