

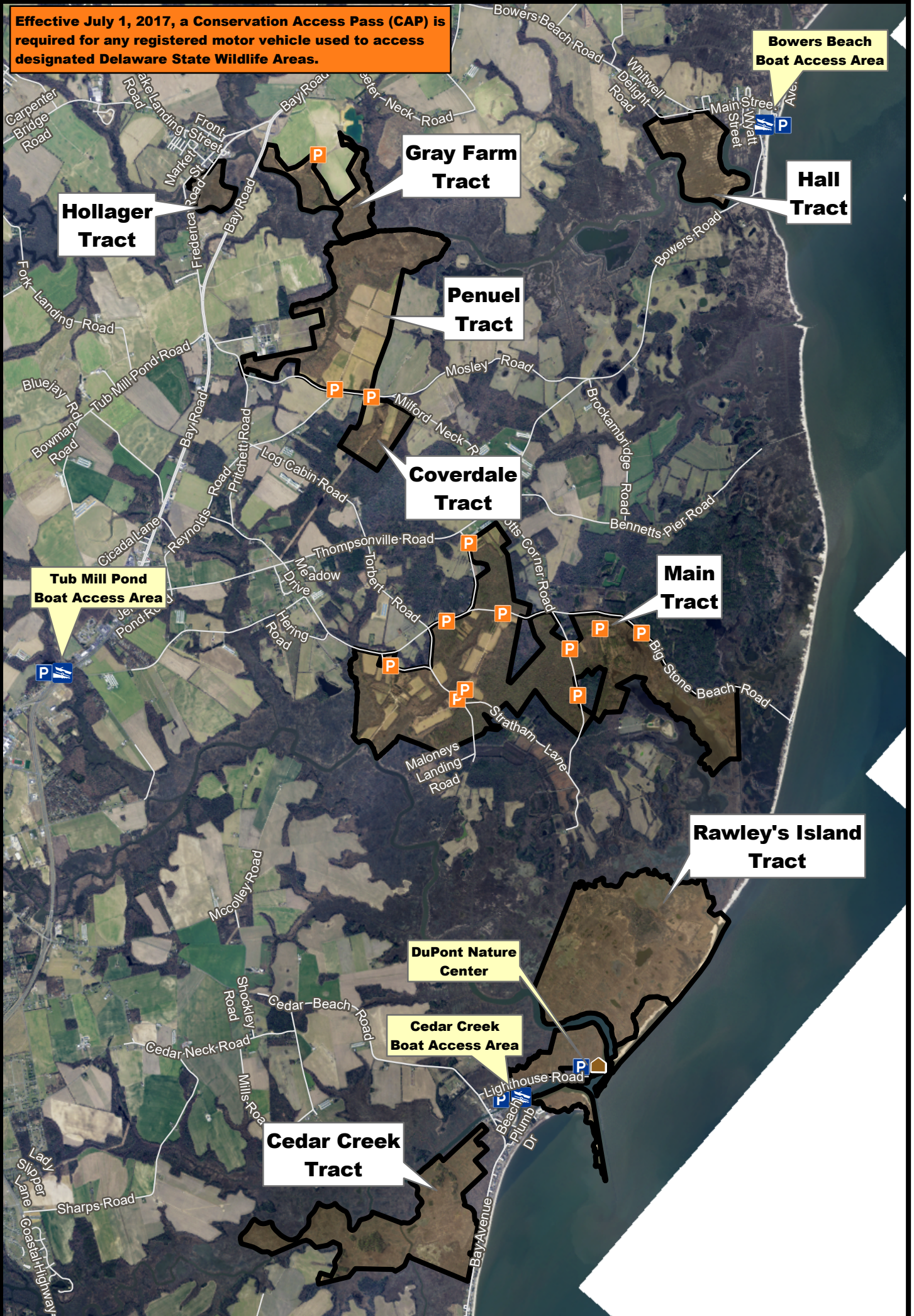


MILFORD NECK WILDLIFE AREA

We Bring You Delaware's Great Outdoors through Science and Service



Effective July 1, 2017, a Conservation Access Pass (CAP) is required for any registered motor vehicle used to access designated Delaware State Wildlife Areas.



-  Wildlife Area
-  CAP Exempt
-  Building
-  CAP Required
-  CAP Exempt



THE BOUNDARIES SHOWN ON THIS MAP ARE APPROXIMATE AND ARE ONLY TO BE USED AS A GUIDE.