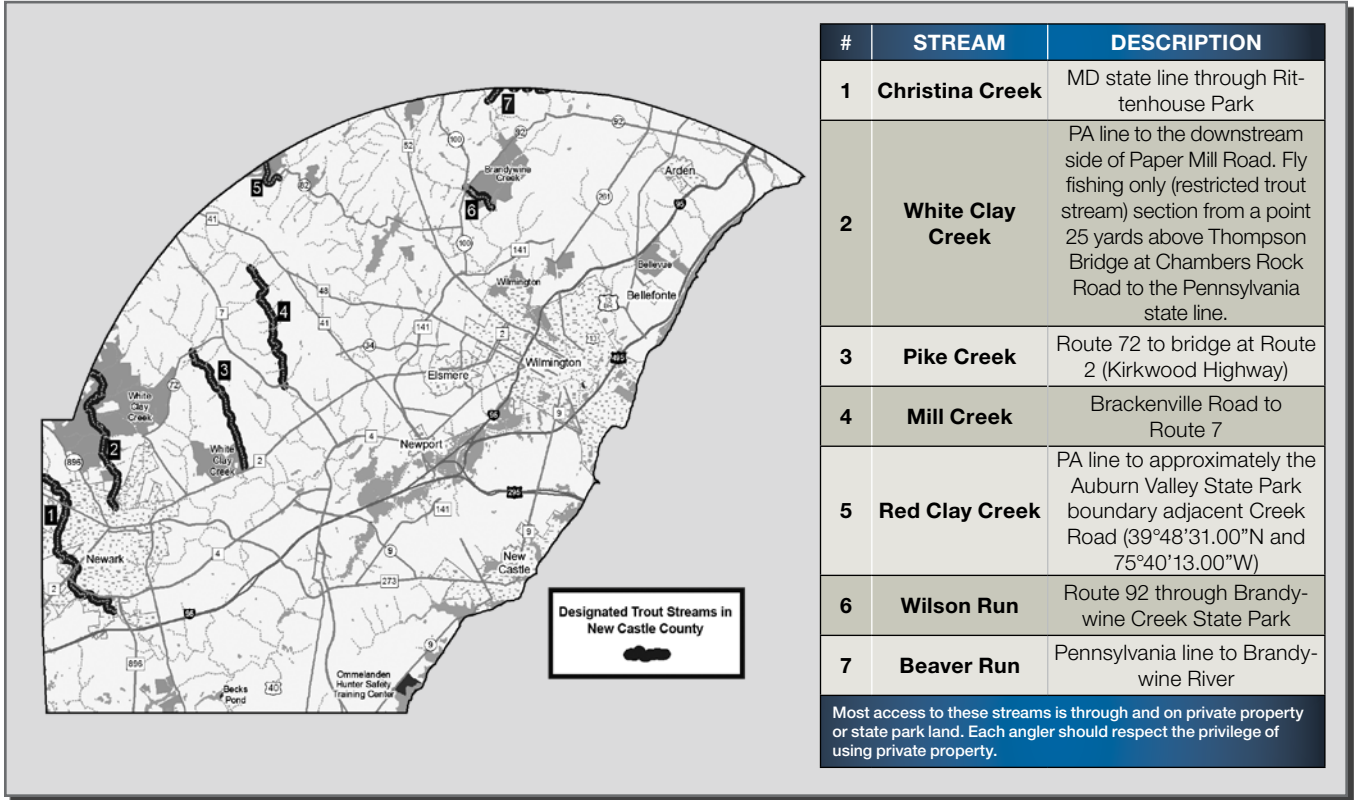


# FRESHWATER TROUT FISHING



## 2026 TENTATIVE TROUT STOCKING SCHEDULE

WATER	PRIOR TO SEASON*	MARCH 12	APRIL 6	APRIL 9	APRIL 13	APRIL 16	APRIL 23	APRIL 30	MID OCTOBER
<b>STREAMS (SEASON OPENS 7:00 A.M., APRIL 4 - YOUTH ONLY. APRIL 5 - 1/2 HR BEFORE SUNRISE FOR ALL ANGLERS)</b>									
Beaver Run	🐟			🐟	🐟				
Christina Creek	🐟		🐟		🐟	🐟**	🐟		
Mill Creek	🐟			🐟					
Pike Creek	🐟			🐟					
Red Clay Creek	🐟		🐟			🐟		🐟	
White Clay Creek	🐟		🐟	🐟	🐟	🐟**	🐟	🐟**	🐟
Wilson Run	🐟			🐟	🐟	🐟**	🐟***		
<b>PONDS (SEASON OPENS 7:00 A.M. MARCH 7 - YOUTH ONLY. MARCH 8 - 1/2 HR BEFORE SUNRISE FOR ALL ANGLERS)</b>									
Tidbury	🐟	🐟							
Newton	🐟	🐟							

\* Prior to season: stocking includes trophy-sized rainbow trout (14 inches or greater) at all locations  
 \*\* April 16 and May 1: Brown trout 11 inches or greater will be stocked at locations listed  
 \*\*\* April 23: Stocking of 12-13 inch and trophy-sized rainbows to prepare for the annual anglers fishing derby for anglers with special needs on April 25, 2026 in Wilson Run at Brandywine State Park. For details on the fishing derby, please call the park office at 302-577-3534.

**It shall be unlawful for any person to stock any species of fish into the non-tidal public waters of this State without the written permission of the Director. This regulation does not prohibit the stocking of private impoundments.**