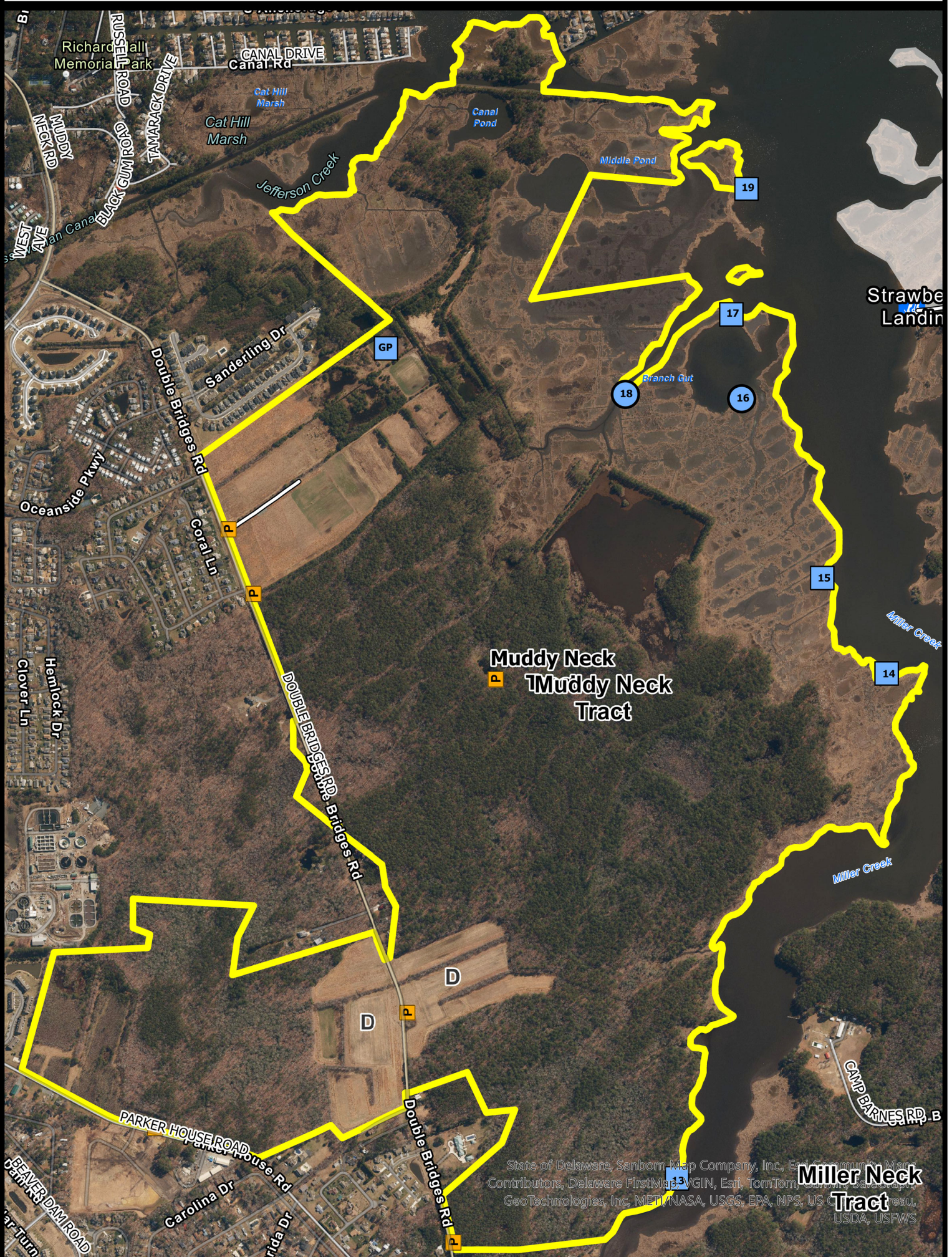




ASSAWOMAN WILDLIFE AREA



Muddy Neck Tract Waterfowl & Gamebird Hunting



- Wildlife Area
- Refuge
- CAP Required

- Maintained Roadway
- Waterfowl Blind
- Waterfowl Blind Site
- Dove Field
- Boat Ramp



BOUNDARIES SHOWN ARE APPROXIMATE AND SHOULD ONLY BE USED AS A GUIDE

WATERFOWL & GAMEBIRD HUNTING
ASSAWOMAN WILDLIFE AREA
Miller and Muddy Neck Tracts
Effective July 1, 2024 – June 30, 2025

Persons may use state wildlife areas only as directed by the following rules, which have been established by Wildlife Regulations 3900 of the Division of Fish and Wildlife, pursuant to Section 103, 7 Delaware Code. A Conservation Access Pass (CAP) is required for any registered motor vehicle used to access designated public lands owned or managed by the Division of Fish & Wildlife. For more information go to <https://de.gov/fw> or call (302) 739-9912. Please refer to the **General Overview** map for additional access and allowable use information.

GENERAL

1. Violators of wildlife area regulations may be subject to fines and/or revocation of hunting privileges on state wildlife areas for up to one year.
2. Persons who possess, consume, or are under the influence of drugs or alcoholic beverages are prohibited from hunting or possessing firearms on Division Lands.
3. Failure to accurately complete and return harvest data cards may result in loss of hunting privileges.
4. Firearms may not be discharged outside of established hunting seasons. Target shooting is prohibited at any time.

WATERFOWL HUNTING

1. Hunting by permit only, issued by a daily lottery held at the Assawoman Check Station.
2. Drawing held 2 hours before sunrise. Blinds not issued during the drawing are available on a self-signup basis until 1:00 PM
3. All hunting from state-built blinds or blind sites only.
4. No more than 3 persons may occupy one blind.
5. No airboats.
6. No waterfowl hunting from upland fields except from state-built blinds or blind sites.
7. This area will be open during the Snow Goose Conservation Order. See official seasons and regulations. No permit or sign-in required during the conservation order.

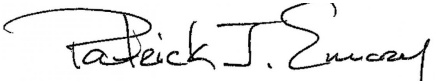
DOVE HUNTING

1. Only nontoxic shot may be possessed while hunting doves during the September season.
2. Dove hunting allowed on Opening day, Labor Day, and all Saturdays and Sundays in September. Sign in required at the Assawoman Check Station at 12:00 PM. Hunting times are from 1:00-6:00 PM on regulated dove fields during the September season.
3. Dove hunting permitted during all legal hours anywhere except within refuges and safety zones during late seasons, obtain permit from the Assawoman Check Station.

TURKEY HUNTING

1. Turkey hunting by permit only. Permits awarded through preseason lottery. See Delaware Hunting and Trapping Guide for application.

Harvesting or attempting to harvest Northern Bobwhite Quail is prohibited.


Patrick J. Emory, Director

For further information contact the Division of Fish and Wildlife at (302) 739-9912 or the Sussex County HQ at (302) 539-3160.