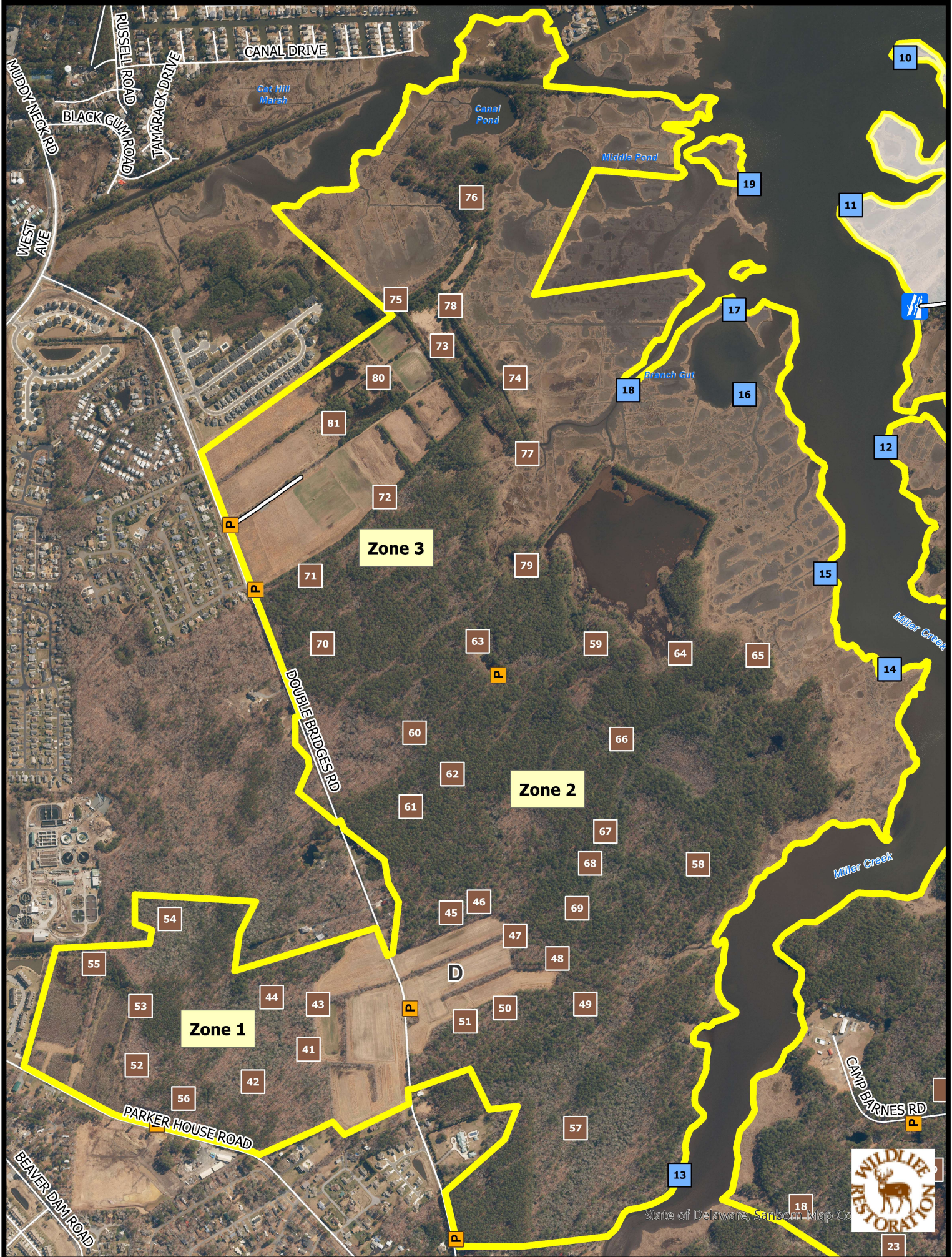




ASSAWOMAN WILDLIFE AREA

Muddy Neck Tract Hunting



- Wildlife Area
- Refuge
- CAP Required

- Maintained Roadway
- Waterfowl Blind
- Deer Stand
- Dove Field
- Boat Ramp



BOUNDARIES SHOWN ARE APPROXIMATE AND SHOULD ONLY BE USED AS A GUIDE

HUNTING
ASSAWOMAN WILDLIFE AREA
Miller and Muddy Neck Tracts
Effective July 1, 2023 – June 30, 2024

Persons may use state wildlife areas only as directed by the following rules, which have been established by Wildlife Regulations 3900 of the Division of Fish and Wildlife, pursuant to Section 103, 7 Delaware Code. A Conservation Access Pass (CAP) is required for any registered motor vehicle used to access designated public lands owned or managed by the Division of Fish & Wildlife. For more information go to www.de.gov/fw or call (302) 739-9912. Please refer to the **General Overview** map for additional access and allowable use information.

GENERAL

1. Violators of wildlife area regulations may be subject to fines and/or revocation of hunting privileges on state wildlife areas for up to one year.
2. Persons who possess, consume, or are under the influence of drugs or alcoholic beverages are prohibited from hunting or possessing firearms on Division Lands.
3. Failure to accurately complete and return harvest data cards may result in loss of hunting privileges.
4. Firearms may not be discharged outside of established hunting seasons. Target shooting is prohibited at any time.
5. The placement or use of trail cameras is prohibited on all state wildlife and fishing access areas.

DEER HUNTING

Sunday deer hunting permitted. See Sunday Deer Hunting maps for open areas and hunting implement restrictions.

See Overview Map for rules pertaining to registration of temporary deer stands and blinds.

A. Archery

1. Archery hunting permitted anywhere except within refuges, safety zones and on impoundment dikes, but hunters must register for a zone at the designated tag boards and indicate which stand they will be hunting closest to.
2. Archery hunters must register through the daily lottery and hunt from the state-built stands during any overlapping firearm deer season.
3. Archery hunting is closed on the Miller Neck Tract on the special Youth Deer Hunt days.
4. Archery hunters may use temporary portable stands. No permanent deer stands, platforms, ladders, or blinds may be constructed. No screw-in steps, tree spikes, screws, or nails are allowed. All parts of temporary portable deer stands must be removed at the end of each days hunt.

B. Firearm – Muzzleloader, Shotgun, Handgun

1. A Wildlife Area Deer Stand / Waterfowl Blind Lottery Permit is required to hunt during all deer firearms seasons.
2. Stands issued by lottery at the Assawoman Check Station.
3. Drawings held 1 1/2 hours before sunrise (2 hours before sunrise during November shotgun season). Stands not issued through lottery are available on a self-signup basis.
4. This area **IS NOT OPEN** for the special October antlerless firearms season. Archery hunting is allowed during this season in accordance with state and area laws.
5. Refuge stands (R1-R10) are open on Mondays and Fridays of all firearm seasons beginning on the first Monday of November shotgun season.
6. Only one firearm permitted per deer stand.
7. Deer drives are permitted on Tuesday, Wednesday and Thursday only between 9:00 AM and 3:00 PM by parties of 6 or fewer resident hunters. Non-resident hunters may not participate in deer drives.
8. Handgun hunting permitted during the January handgun season. Refuge stands will not be open.
9. Disabled deer hunting locations are available for non-ambulatory hunters authorized to hunt from a vehicle (HD1-HD4). These locations will not be open on days when refuge stands are being hunted. For reservations call 539-3160. All non-ambulatory hunters must be accompanied by an assistant.
10. Disabled deer stands equipped with stairs (4, 16, 33, 56) are available for hunters possessing a Disabled Hunter Permit. If not filled by disabled hunters these stands are available during general lottery.
11. Hunters are permitted to use designated established roadways to retrieve harvested deer between the hours of 10:00 AM – 12:00 PM and from ½ hour after sunset – 9:00 PM.

UPLAND HUNTING

A. Small Game

1. Small game hunters must display at least 400 square inches of blaze orange while hunting on State Wildlife Areas.
2. All small game hunters must sign in and return a completed harvest data card available at the Assawoman Check Station.
3. Gray squirrel hunting permitted.
4. Rabbit hunting closed the week before and the week of December antlerless deer season and during the January shotgun deer season.
5. Hunting prohibited within posted refuges and safety zones and dogs are not permitted to enter refuges for any reason.
6. Rabbit dogs may be trained only on the following Sundays: September 3, 10, 17, 24; October 1, 22, 29.

B. Dove

1. Only nontoxic shot may be possessed while hunting doves during the early season.
2. Dove hunting allowed on Opening Day, Labor Day, and all Saturdays in September. Sign in required at the Assawoman Check Station at 12:00pm. Hunting hours are from 1:00-6:00 PM. No dove hunting permitted outside of the designated dove fields during the early season.
3. Dove hunting permitted anywhere except within refuges and safety zones during late seasons, obtain permit from the Assawoman Check Station.

C. Turkey

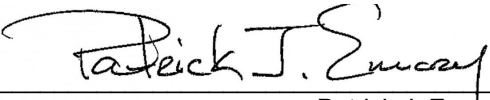
1. Turkey hunting by permit only. Permits awarded through preseason lottery. See Delaware Hunting and Trapping Guide for application.

D. Furbearers

1. No trapping except by valid contract holders. Trapping rights awarded through competitive bids. Call (302) 739-9912 for bidding information.
2. Raccoon hunting permitted from Sept 1 – March 31 during legal raccoon hunting seasons.
3. Red fox and coyote may be harvested in season while hunting other game species per these map regulations and may be hunted during the month of February according to applicable state laws. No fox chasing permitted during any deer firearm season or prior to 1:00 PM during turkey season.

WATERFOWL HUNTING

1. Hunting by permit only, issued by a daily lottery held at the Assawoman Check Station.
2. Drawing held 2 hours before sunrise. Blinds not issued during the drawing are available on a self-signup basis until 1:00 P.M.
3. All hunting from state-built blinds only.
4. No more than 3 persons may occupy one blind.
5. No airboats.
6. No waterfowl hunting from upland fields except from state-built blinds.
7. This area will be open during the Snow Goose Conservation Order. See official seasons and regulations. No permit or sign-in required during the conservation order.


Patrick J. Emory, Director

For further information contact the Division of Fish and Wildlife at (302) 739-9912 or the Sussex County HQ at (302) 539-3160.

For emergencies or to report violations please call the Enforcement Section at 1-800-523-3336.