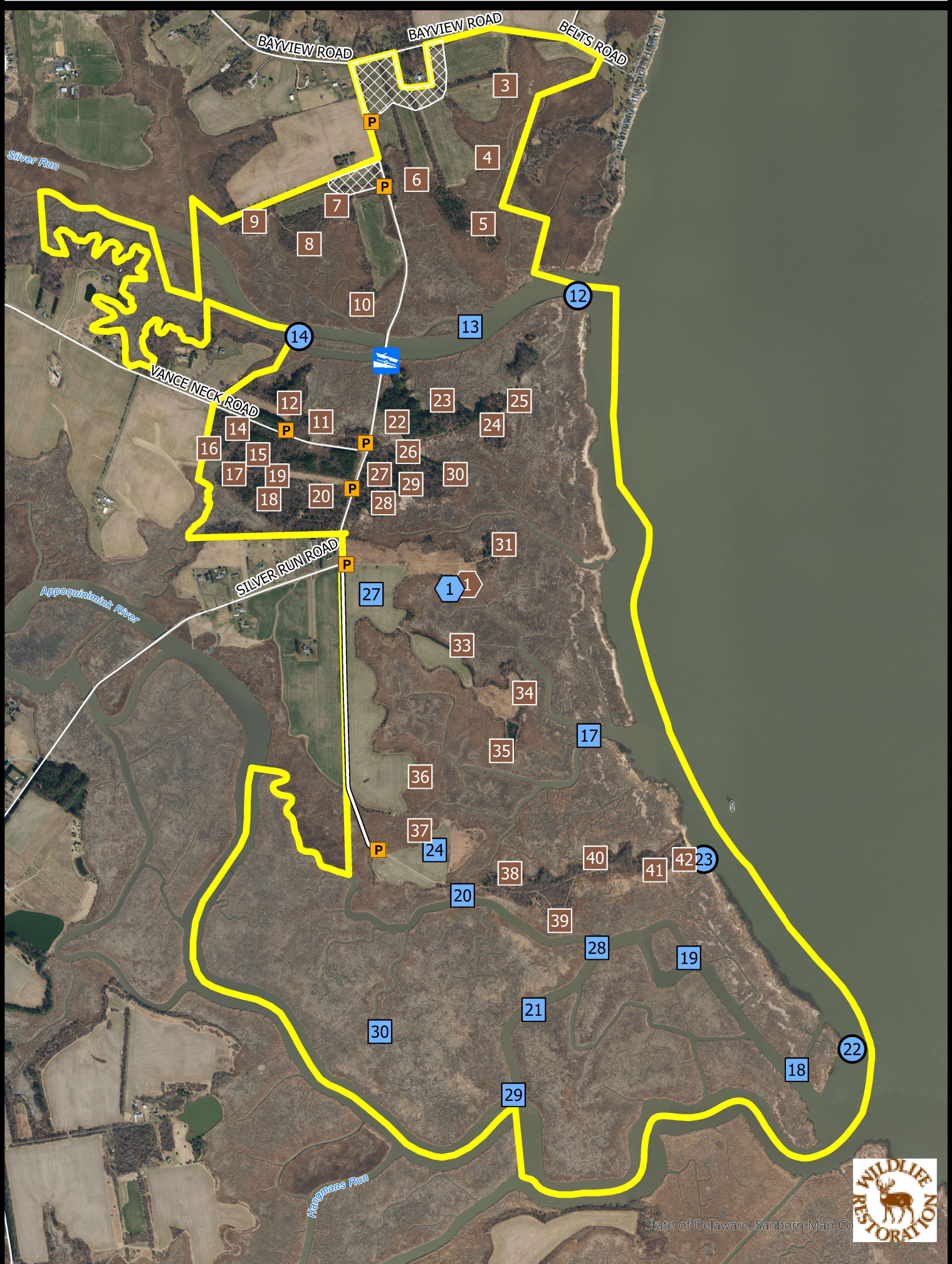




# AUGUSTINE WILDLIFE AREA

## Silver Run, Baxter & Green Tracts Hunting



- |                    |                      |               |
|--------------------|----------------------|---------------|
| Wildlife Area      | Waterfowl Blind      | Deer Stand    |
| Safety Zone        | HD Waterfowl Blind   | HD Deer Stand |
| CAP Required       | Waterfowl Blind Site | Boat Ramp     |
| Maintained Roadway |                      |               |



BOUNDARIES SHOWN ARE APPROXIMATE AND SHOULD ONLY BE USED AS A GUIDE



**HUNTING**  
**AUGUSTINE WILDLIFE AREA**  
**Effective July 1, 2023 – June 30, 2024**

Persons may use state wildlife areas only as directed by the following rules, which have been established by Wildlife Regulations 3900 of the Division of Fish and Wildlife, pursuant to Section 103, 7 Delaware Code. A Conservation Access Pass (CAP) is required for any registered motor vehicle used to access designated public lands owned or managed by the Division of Fish & Wildlife. For more information go to [www.de.gov/fw](http://www.de.gov/fw) or call (302) 739-9912. Please refer to the **General Overview** map for additional access and allowable use information.

### **GENERAL**

1. Violators of wildlife area regulations may be subject to fines and/or revocation of hunting privileges on state wildlife areas for up to one year.
2. Persons who possess, consume, or are under the influence of drugs or alcoholic beverages are prohibited from hunting or possessing firearms on Division Lands.
3. Failure to accurately complete and return harvest data cards may result in loss of hunting privileges.
4. Firearms may not be discharged outside of established hunting seasons. Target shooting is prohibited at any time.
5. The placement or use of trail cameras is prohibited on all state wildlife and fishing access areas.
6. Crabbing and fishing are prohibited in the Lang impoundment.

### **DEER HUNTING**

Sunday deer hunting permitted. See Sunday Deer Hunting maps for open areas and hunting implement restrictions.

**See Overview Map for rules pertaining to registration of temporary deer stands and blinds.**

#### **A. Archery**

1. Archery hunting permitted anywhere except within refuges, safety zones.
2. Archery hunters must register through the daily lottery and hunt from the lottery stands during any overlapping firearm deer season.
3. Archery hunters may use temporary portable stands. No permanent deer stands, platforms, ladders, or blinds may be constructed. No screw-in steps, tree spikes, screws, or nails are allowed. All parts of temporary portable deer stands must be removed at the end of each days hunt.

#### **B. Firearm – Muzzleloader, Shotgun, Handgun**

1. A Wildlife Area Deer Stand / Waterfowl Blind Lottery Permit is required to hunt during all deer firearms seasons.
2. Stands issued by lottery at the Augustine Check Station.
3. Drawings held 2 hours before sunrise. A second lottery will be held at NOON. No permits issued after 1:00 PM.
4. This area **IS NOT OPEN** for the special October antlerless firearms season. Archery hunting is allowed during this season in accordance with state and area laws.
5. Only one firearm permitted per deer stand.
6. Deer drives are prohibited.
7. Handgun hunting permitted during the January handgun season via lottery.
8. Disabled deer hunting locations are available for non-ambulatory hunters. These locations can be reserved in advance one time per season by calling (302) 836-7294 or (302) 834-8433. If not reserved disabled locations are available through the daily lottery.

### **UPLAND HUNTING**

#### **A. Small Game**

1. Small game hunters must display at least 400 square inches of blaze orange while hunting on State Wildlife Areas.
2. Small game hunting permitted anywhere except within refuges and safety zones, and dogs are not permitted to enter refuges for any reason.
3. Rabbit hunting closed the week before and the week of December antlerless deer season and during the January shotgun deer season.
4. Rabbit dogs may be trained only on the following Sundays: September 3, 10, 17, 24; October 1, 22, 29.

#### **B. Dove**

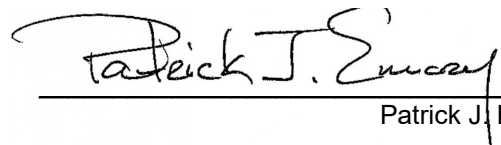
1. Only nontoxic shot may be possessed while hunting doves during the early season.
2. Dove hunting permitted on the entire area, no permit required.

#### **C. Furbearers**

1. No trapping except by valid contract holders. Trapping rights awarded through competitive bids. Call (302) 739-9912 for bidding information.
2. Raccoon hunting permitted from Sept 1 – March 31 during legal raccoon hunting seasons.
3. Red fox and coyote may be harvested in season while hunting other game species per these map regulations and may be hunted during the month of February according to applicable state laws. No fox chasing permitted during any deer firearm season or prior to 1:00 PM during turkey season.

### **WATERFOWL HUNTING**

1. A Wildlife Area Deer Stand / Waterfowl Blind Lottery Permit is required to hunt during all waterfowl seasons.
2. Blinds issued by lottery held at the Augustine Check Station 2 hours before sunrise. Blinds issued until 1:00 P.M.
3. Hunting permitted on opening day, Monday, Wednesday, Friday, and Saturday during all regular waterfowl seasons.
4. All hunting from state-built blinds or blind sites only. Hunters must stay within 35 yards of designated blind sites while hunting.
5. No more than 3 persons per pit, blind, or blind site.
6. This area is open for the early teal season, however not all blinds will be available.
7. Layout blinds are permitted to be used in upland fields with designated blind sites.
8. No waterfowl hunting from upland fields, except from designated goose blinds and blind sites.
9. No boats with gas motors may be used on the Ashton tract.
10. Airboats are prohibited.
11. Park in appropriate parking lots (see map). Do not park at the ramp or on the side of the road. Do not drive into fields.
12. Hunters using marsh and river blinds must have a boat and required safety equipment.
13. Hunters must vacate all hunting areas by one hour after sunset.
14. This area will be open during the Snow Goose Conservation Order. See official seasons and regulations. No permit or sign-in required during the conservation order.



Patrick J. Emory, Director

For further information contact the Division of Fish and Wildlife at (302) 739-9912, New Castle County HQ: (302) 834-8433, or Augustine Lottery Station: (302) 836-7294.

**For emergencies or to report violations please call the Enforcement Section at 1-800-523-3336.**