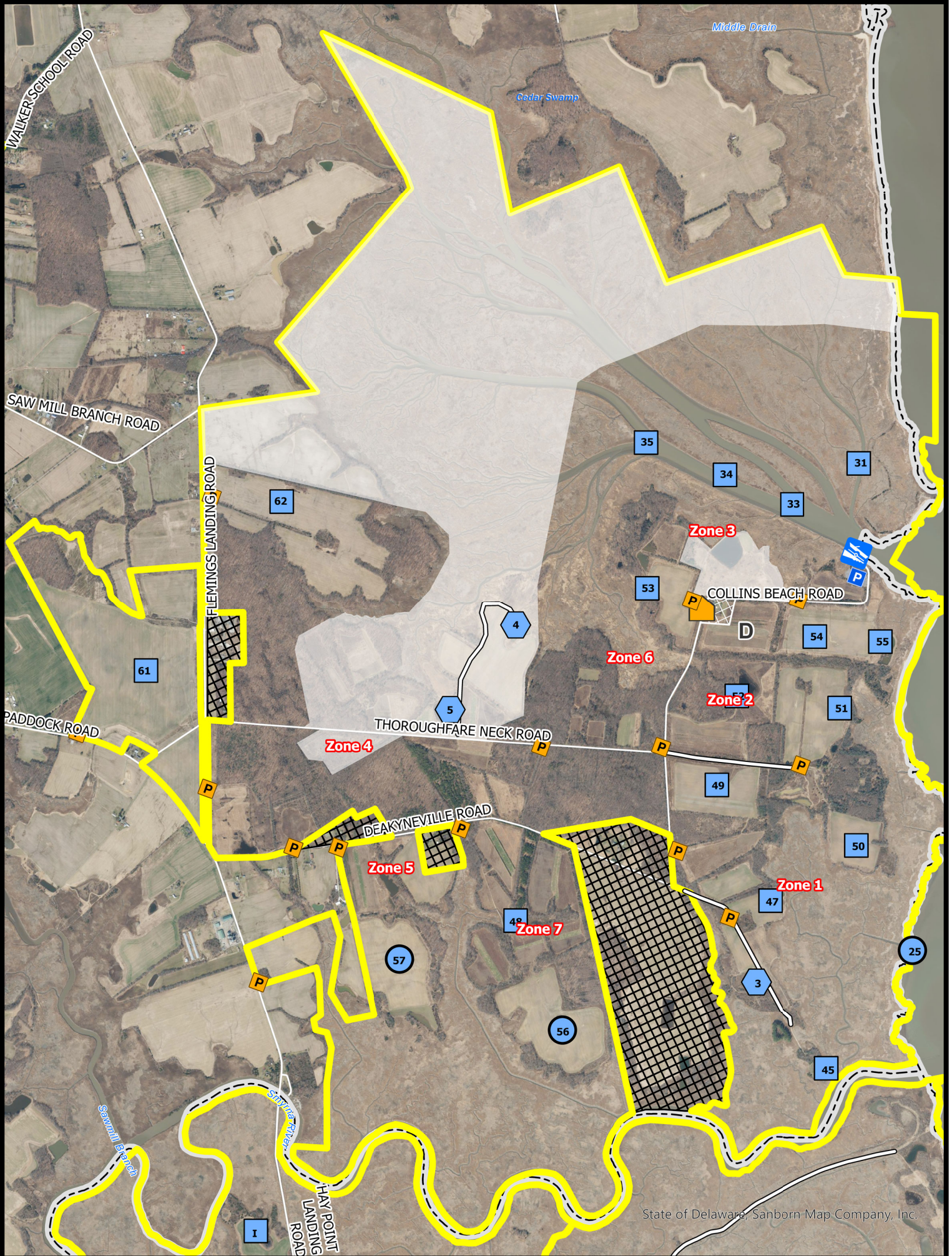




CEDAR SWAMP WILDLIFE AREA

Main Tract Waterfowl & Gamebird Hunting



Wildlife Area

Private Property

Refuge

Safety Zone

CAP Exempt

CAP Required

Maintained Roadway

Waterfowl Blind

HD Waterfowl Blind

Waterfowl Blind Site

Dove Field

Check Station

Boat Ramp



BOUNDARIES SHOWN ARE APPROXIMATE AND SHOULD ONLY BE USED AS A GUIDE

WATERFOWL & GAMEBIRD HUNTING
CEDAR SWAMP WILDLIFE AREA
Effective July 1, 2024 – June 30, 2025

Persons may use state wildlife areas only as directed by the following rules, which have been established by Wildlife Regulations 3900 of the Division of Fish and Wildlife, pursuant to Section 103, 7 Delaware Code. A Conservation Access Pass (CAP) is required for any registered motor vehicle used to access designated public lands owned or managed by the Division of Fish & Wildlife. For more information go to <https://de.gov/fw> or call (302) 739-9912. Please refer to the **General Overview** map for additional access and allowable use information.

GENERAL

1. Violators of wildlife area regulations may be subject to fines and/or revocation of hunting privileges on state wildlife areas for up to one year.
2. Persons who possess, consume, or are under the influence of drugs or alcoholic beverages are prohibited from hunting or possessing firearms on Division Lands.
3. Failure to accurately complete and return harvest data cards may result in loss of hunting privileges.
4. Firearms may not be discharged outside of established hunting seasons. Target shooting is prohibited at any time.

WATERFOWL HUNTING

1. A Wildlife Area Deer Stand / Waterfowl Blind Lottery Permit is required to hunt during all waterfowl seasons.
2. Blinds issued by lottery held at the Cedar Swamp Check Station 2 hours before sunrise. Blinds issued until 1:00 PM
3. Hunting permitted on opening day, Tuesdays, Thursdays, Saturdays, Sundays and holidays during all regular waterfowl seasons.
4. This area **IS NOT OPEN** for the early teal season.
5. All hunting from state-built blinds or blind sites only.
6. Hunters must stay within 35 yards of designated blind sites while hunting.
7. No more than 3 persons per pit, blind, or blind site.
8. No waterfowl hunting from upland fields, except from designated goose blinds and blind sites.
9. Layout blinds are permitted to be used in upland fields with designated blind sites.
10. Airboats are prohibited.
11. Park in appropriate parking lots (see map). Do not park at the ramp or on the side of the road. Do not drive into fields.
12. Hunters using marsh and river blinds must have a boat and required safety equipment.
13. This area will be open during the Snow Goose Conservation Order. See official seasons and regulations. No permit or sign-in required during the conservation order.

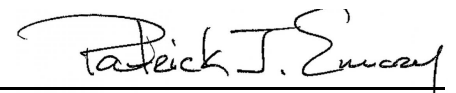
DOVE HUNTING

1. Only nontoxic shot may be possessed while hunting doves during the September season.
2. Regulated dove fields are available by lottery only on Opening day, Labor Day, and all Saturdays and Sundays of the September season. Lotteries held at 12:00 PM at the Cedar Swamp Check Station. Hunting hours on regulated fields are from 1:00-6:00 PM.
3. Dove hunting is prohibited in Zones 2, 3 and 8 except for within the regulated fields during early season. Dove hunting permitted in all other areas during the September season without permit.
4. Dove hunting permitted during all legal hours anywhere except within refuges and safety zones during late seasons, no permit required.

TURKEY HUNTING

1. Turkey hunting by permit only. Permits awarded through preseason lottery. See Delaware Hunting and Trapping Guide for application.

Harvesting or attempting to harvest Northern Bobwhite Quail is prohibited.


Patrick J. Emory, Director

For further information contact the Division of Fish and Wildlife at (302) 739-9912 or the New Castle County HQ at (302) 834-8433

For emergencies or to report violations please call the Enforcement Section at 1-800-523-3336.