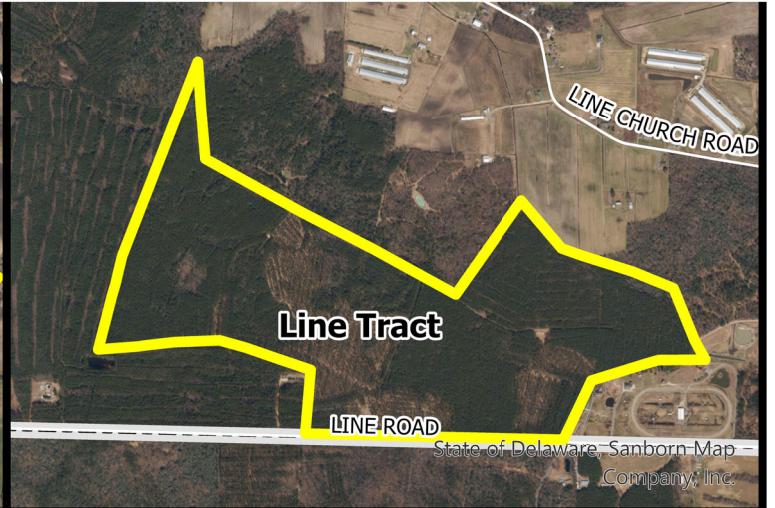
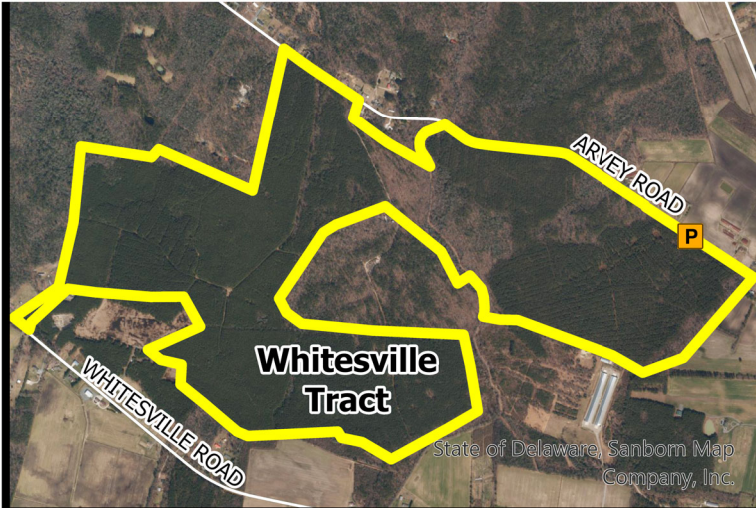
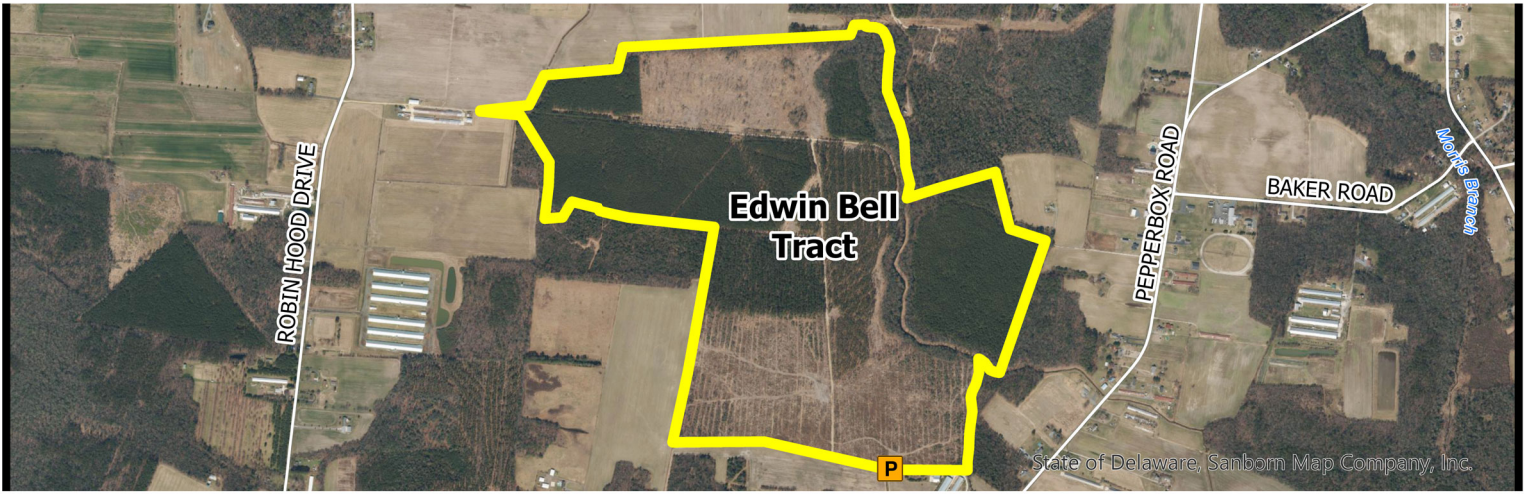
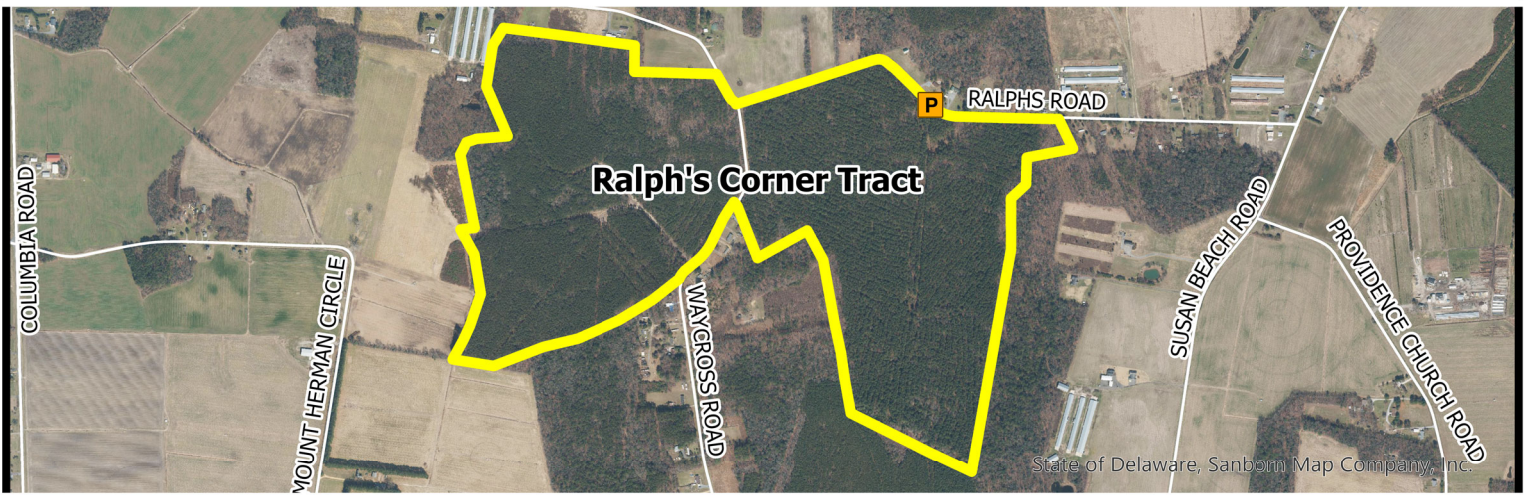




# INDUSTRIAL FOREST LAND

## Laurel Complex

### Deer, Furbearers, Small Game, Waterfowl & Gamebird Hunting



Wildlife Area  
 CAP Required

State Line



BOUNDARIES SHOWN ARE APPROXIMATE AND SHOULD ONLY BE USED AS A GUIDE

**DEER, FURBEARER, SMALL GAME, WATERFOWL, & GAMEBIRD HUNTING**  
**INDUSTRIAL FOREST LANDS**  
**Barr & Laurel Complexes**  
Effective July 1, 2024 – June 30, 2025

Persons may use state wildlife areas only as directed by the following rules, which have been established by Wildlife Regulations 3900 of the Division of Fish and Wildlife, pursuant to Section 103, 7 Delaware Code. A Conservation Access Pass (CAP) is required for any registered motor vehicle used to access designated public lands owned or managed by the Division of Fish & Wildlife. For more information go to <https://de.gov/fw> or call (302) 739-9912. Please refer to the **General Overview** map for additional access and allowable use information.

**GENERAL**

1. Violators of wildlife area regulations may be subject to fines and/or revocation of hunting privileges on state wildlife areas for up to one year.
2. Persons who possess, consume, or are under the influence of drugs or alcoholic beverages are prohibited from hunting or possessing firearms on Division Lands.
3. Failure to accurately complete and return harvest data cards may result in loss of hunting privileges.
4. Firearms may not be discharged outside of established hunting seasons. Target shooting is prohibited at any time.
5. All hunters installing temporary deer stands and/or blinds to remain on-site overnight are required to obtain a free registration number at <https://de.gov/fw> or by calling (302) 739-9912. The registration number must be legibly displayed on all stands and/or blinds.

**DEER HUNTING**

Sunday deer hunting permitted. See Sunday Deer Hunting maps for open areas and hunting implement restrictions.

1. Deer hunting permitted anywhere except within refuges and safety zones.
2. This area **IS OPEN** for the special October antlerless firearms season.
3. Deer hunters may use temporary portable stands. No permanent deer stands, platforms, ladders, or blinds may be constructed. No screw-in steps, tree spikes, screws, or nails are allowed. All parts of a temporary portable deer stand must be removed at the end of each day's hunt unless registered with the Division.
4. The Division is not responsible for theft or damage to any temporary stand and placement of a temporary stand does not give the stand owner any exclusive hunting rights to that area.
5. Deer drives are permitted between the hours of 9:00 AM and 3:00 PM. No more than 6 hunters may participate in deer drives.
6. Handguns are permitted during the November and January shotgun seasons and during the January handgun season.

**UPLAND HUNTING**

1. Small game hunters must display at least 400 square inches of blaze orange while hunting on State Wildlife Areas.

2. Small game hunting permitted anywhere except within refuges and safety zones, and dogs are not permitted to enter refuges for any reason.
3. Rabbit hunting closed the week before and the week of December antlerless deer season and during the January shotgun deer season.
4. Rabbit dogs may be trained only on the following Sundays: September 1, 8, 15, 22.

**B. Furbearers**

1. Public trapping is permitted with a valid permit issued by the Division. Limited permits available. For more information, visit <https://dnrec.delaware.gov/fish-wildlife/hunting/furbearers/> or call (302) 739-9912.
2. Raccoon hunting permitted from Sept 1 – March 31 during legal raccoon hunting seasons.
3. Red fox and coyote may be harvested in season while hunting other game species per these map regulations and may be hunted during the month of February according to applicable state laws.
4. No fox chasing permitted during any deer firearm season or prior to 1:00 PM during turkey season.

**WATERFOWL HUNTING**

1. Waterfowl hunting permitted anywhere except within refuges and safety zones.

**DOVE HUNTING**

1. Only nontoxic shot may be possessed while hunting doves during the early season.
2. Dove hunting permitted anywhere except within refuges and safety zones.

**TURKEY HUNTING**

1. Turkey hunting by permit only. Permits awarded through preseason lottery. See Delaware Hunting and Trapping Guide for application.

**Harvesting or attempting to harvest Northern Bobwhite Quail is prohibited.**

Patrick J. Emory, Director

For further information contact the Division of Fish and Wildlife at (302) 739-9912 or the Sussex County HQ at (302) 539-3160.

**For emergencies or to report violations please call the Enforcement Section at 1-800-523-3336.**