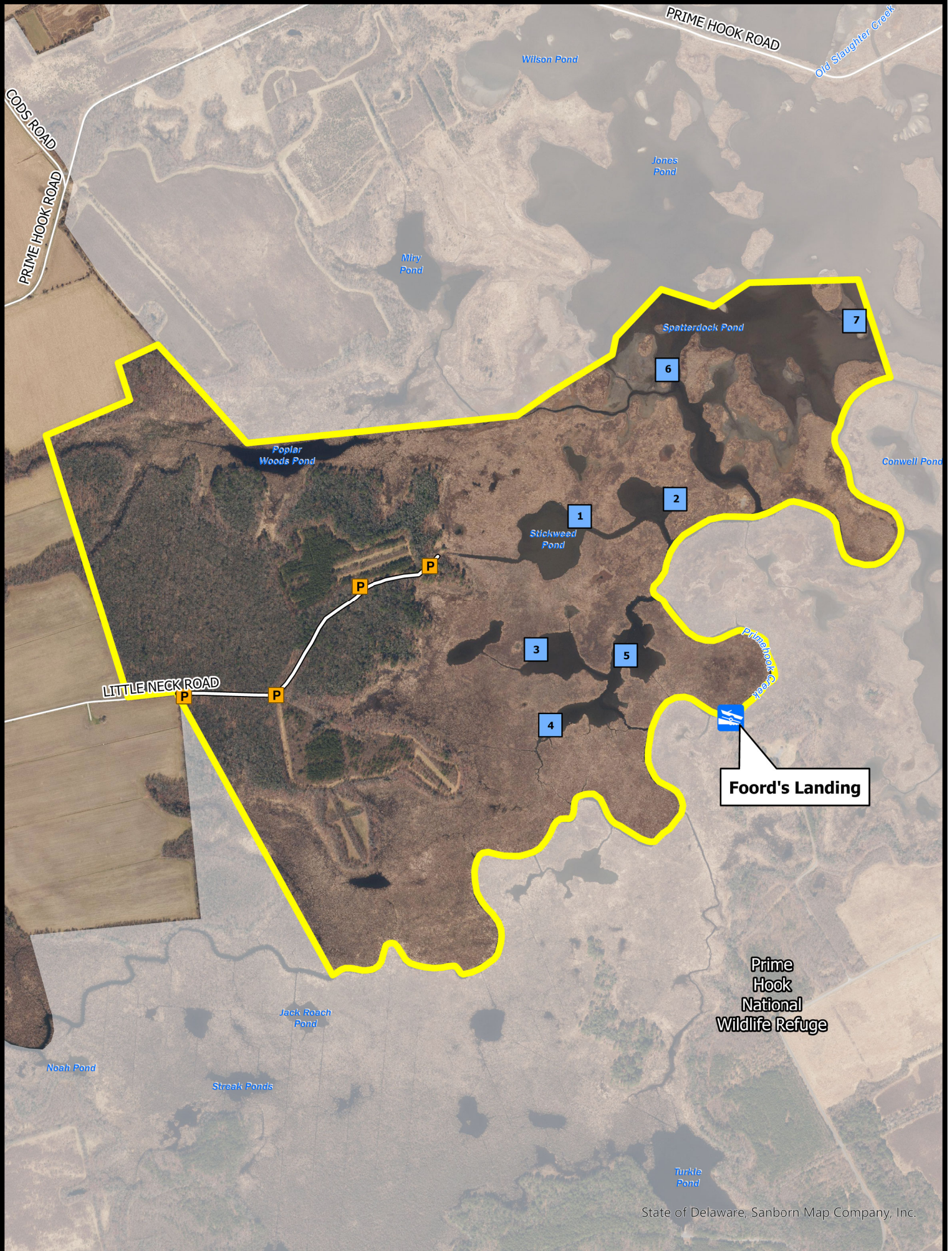




# PRIME HOOK WILDLIFE AREA

## Waterfowl & Gamebird Hunting



State of Delaware, Sanborn Map Company, Inc.

Wildlife Area

CAP Required

Waterfowl Blind

National Wildlife Refuge

Maintained Roadway

Boat Ramp



BOUNDARIES SHOWN ARE APPROXIMATE AND SHOULD ONLY BE USED AS A GUIDE

**DEER, FURBEARERS & SMALL GAME HUNTING  
PRIME HOOK WILDLIFE AREA  
Effective July 1, 2024 – June 30, 2025**

Persons may use state wildlife areas only as directed by the following rules, which have been established by Wildlife Regulations 3900 of the Division of Fish and Wildlife, pursuant to Section 103, 7 Delaware Code. A Conservation Access Pass (CAP) is required for any registered motor vehicle used to access designated public lands owned or managed by the Division of Fish & Wildlife. For more information go to <https://de.gov/fw> or call (302) 739-9912. Please refer to the **General Overview** map for additional access and allowable use information.

**GENERAL**

1. Violators of wildlife area regulations may be subject to fines and/or revocation of hunting privileges on state wildlife areas for up to one year.
2. Persons who possess, consume, or are under the influence of drugs or alcoholic beverages are prohibited from hunting or possessing firearms on Division Lands.
3. Failure to accurately complete and return harvest data cards may result in loss of hunting privileges.
4. Firearms may not be discharged outside of established hunting seasons. Target shooting is prohibited at any time.

**WATERFOWL HUNTING**

**\*Due to low water levels hunters must use the Foords Landing boat ramp located on the Federal Wildlife Refuge as the state ramp is not unusable.\***

1. Blinds and blind sites issued using the hunter facilitated drawing procedure held at the Prime Hook National Wildlife Refuge checking station 2 1/2 hours before sunrise. Blinds can be signed out until 12:00 PM.
2. All hunting from state and federal blinds and blind sites only.
3. Hunting permitted on Opening day, Mondays, Wednesdays, Fridays, Saturdays, Sundays, and holidays during all regular waterfowl seasons.
4. All federal blinds closed on Sundays.
5. Hunting permitted from ½ hour before sunrise until 4:00 PM. Hunters must vacate the area by 5:00 PM.
6. No more than 3 persons per pit, blind, or blind site.
7. This area **IS OPEN** for the early teal season, however only State blinds are open, no Federal blind sites are open for early teal. Lotteries and hunting days for early teal season will be the same as general waterfowl seasons as defined in #1, 2, 3, and 4 above.
8. During waterfowl hunting seasons, no boats are allowed at access ramps or in impoundments without a valid waterfowl hunting permit for that day.

9. Airboats are prohibited.
10. Hunters using marsh blinds and blind sites must have a boat and required safety equipment.
11. This area will be open during the Snow Goose Conservation Order. See official seasons and regulations. No permit or sign-in required during the conservation order.

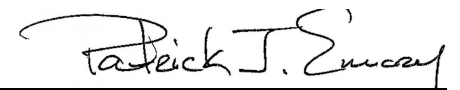
**DOVE HUNTING**

1. Only nontoxic shot may be possessed while hunting doves during the early season.
2. Dove hunting permitted on the entire area during all seasons except within refuges and safety zones, no permit required.

**TURKEY HUNTING**

1. Turkey hunting by permit only. Permits awarded through preseason lottery. See Delaware Hunting and Trapping Guide for application.

**Harvesting or attempting to harvest Northern Bobwhite Quail is prohibited.**

  
Patrick J. Emory, Director

For further information contact the Division of Fish and Wildlife at (302) 739-9912 or the Sussex County HQ at (302) 539-3160.

**For emergencies or to report violations please call the Enforcement Section at 1-800-523-3336.**