



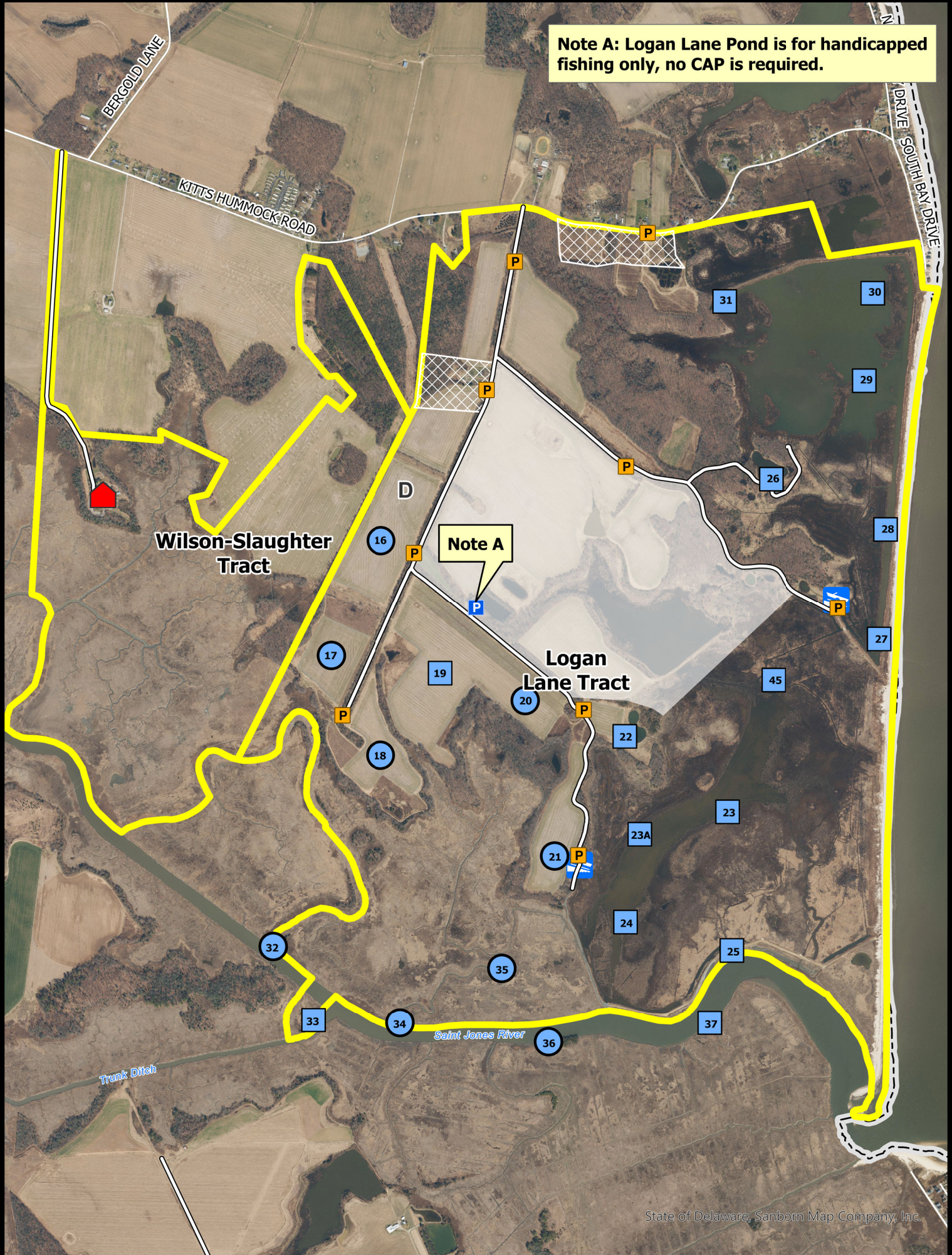
TED HARVEY CONSERVATION AREA

Logan Lane & Wilson-Slaughter Tracts

Waterfowl & Gamebird Hunting



Note A: Logan Lane Pond is for handicapped fishing only, no CAP is required.



State of Delaware, Sanborn Map Company, Inc.

- Wildlife Area
- Refuge
- Safety Zone
- CAP Exempt
- CAP Required
- Maintained Roadway
- Waterfowl Blind
- Waterfowl Blind Site
- Dove Field
- DNERR St. Jones Reserve
- Boat Ramp



BOUNDARIES SHOWN ARE APPROXIMATE AND SHOULD ONLY BE USED AS A GUIDE

WATERFOWL & GAMEBIRD HUNTING
TED HARVEY CONSERVATION AREA
LOGAN LANE AND WILSON-SLAUGHTER TRACTS
Effective July 1, 2024 – June 30, 2025

Persons may use state wildlife areas only as directed by the following rules, which have been established by Wildlife Regulations 3900 of the Division of Fish and Wildlife, pursuant to Section 103, 7 Delaware Code. A Conservation Access Pass (CAP) is required for any registered motor vehicle used to access designated public lands owned or managed by the Division of Fish & Wildlife. For more information go to <https://de.gov/fw> or call (302) 739-9912. Please refer to the **General Overview** map for additional access and allowable use information.

GENERAL

1. Violators of wildlife area regulations may be subject to fines and/or revocation of hunting privileges on state wildlife areas for up to one year.
2. Persons who possess, consume, or are under the influence of drugs or alcoholic beverages are prohibited from hunting or possessing firearms on Division Lands.
3. Failure to accurately complete and return harvest data cards may result in loss of hunting privileges.
4. Firearms may not be discharged outside of established hunting seasons. Target shooting is prohibited at any time.

WATERFOWL HUNTING

1. A Wildlife Area Deer Stand / Waterfowl Blind Lottery Permit is required to hunt during all waterfowl seasons.
2. Blinds issued by lottery held at the Little Creek Check Station 2 ½ hours before sunrise. Blinds reissued by waiting list until 1:00 P.M.
3. Field blinds (16-22) and impoundment blinds (23-31) open on opening day, Wednesdays, Saturdays, Sundays, and holidays during all regular waterfowl seasons.
4. Hunting from field blinds and impoundment blinds ends at 2:00 P.M. and hunters must vacate the area by 3:00 PM.
5. Marsh and river blinds and blind sites (32-44) open all days of all seasons during legal shooting hours.
6. Blind 26 is designated for disabled hunters and is awarded via lottery held at 11:00 AM the day prior to the hunt. If not reserved in advance disabled locations are available through the daily lottery.
7. No more than 3 persons per pit, blind, or blind site.
8. No waterfowl hunting from upland fields except from designated goose blinds.
9. All hunting from state-built blinds or blind sites only. Hunters must stay within 35 yards of designated blind sites while hunting.
10. Airboats are prohibited.

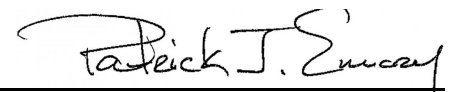
11. Park in appropriate parking lots (see map). Do not park at the ramp or on the side of the road. Do not drive into fields.
12. Hunters using impoundment, marsh, and river blinds must have a boat and required safety equipment.
13. Hunters must vacate all hunting areas 1 hour after sunset.
14. This area will be open during the Snow Goose Conservation Order, no permit or sign-in required.

DOVE HUNTING

1. Only nontoxic shot may be possessed while hunting doves during the September season.
2. Regulated dove field (**D**) available by lottery only on Opening day, Labor Day, Wednesdays, Saturdays, and Sundays of the September season. Lotteries held at 12:00 PM at the **Little Creek Check Station**. Hunting hours are from 1:00-6:00 PM. Dove hunting is prohibited on the Logan Lane Tract outside of the regulated dove field during the September season.
3. Dove hunting permitted during all legal hours anywhere (excluding posted refuges, safety zones, and the Wilson Slaughter Tract) during late seasons, no permit required.

TURKEY HUNTING

1. Turkey hunting by permit only. Permits awarded through preseason lottery. See Delaware Hunting and Trapping Guide for application.



Patrick J. Emory, Director

For further information contact the Division of Fish and Wildlife at (302) 739-9912 or the Kent County HQ at (302) 284-4795.