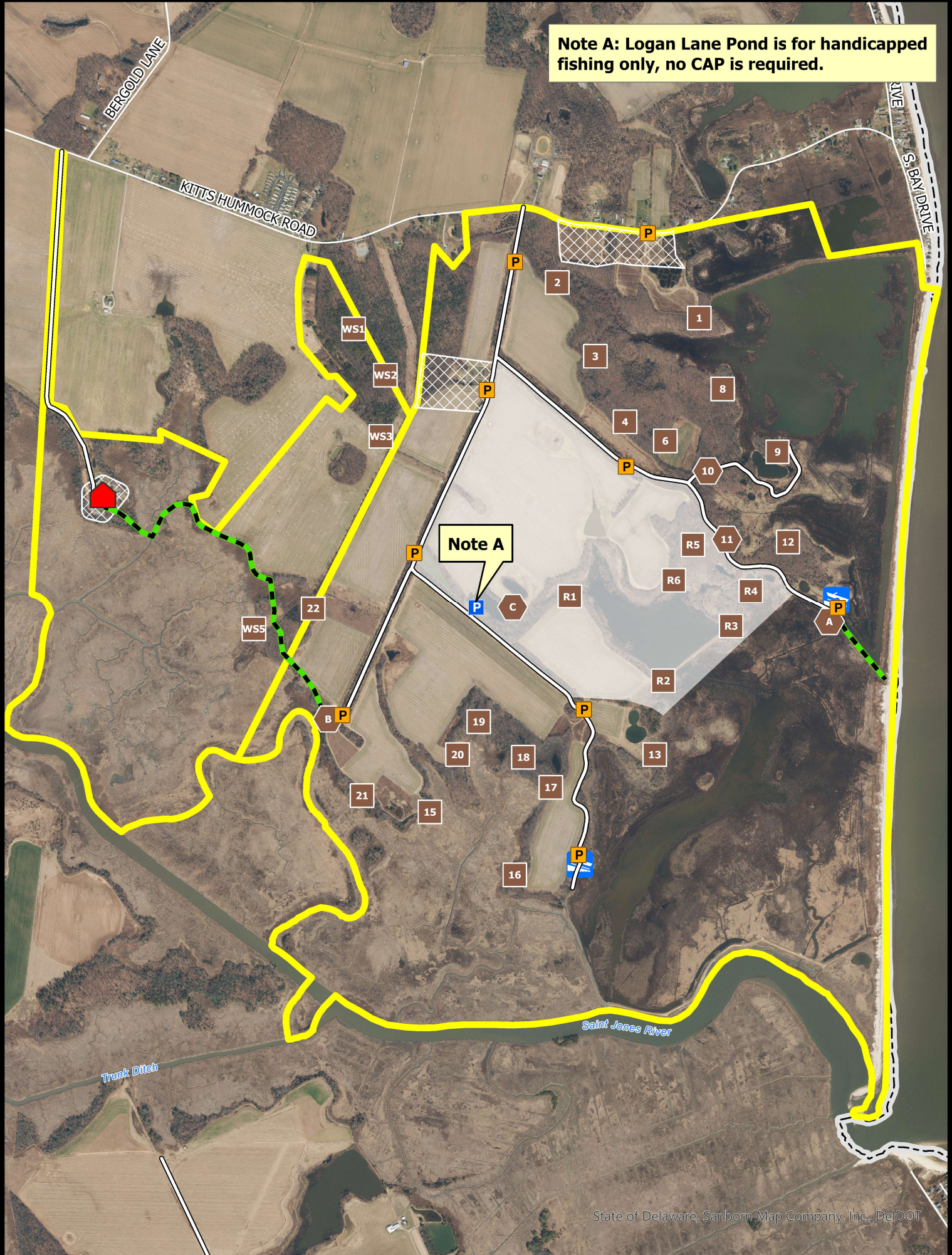




TED HARVEY CONSERVATION AREA

Logan Lane & Wilson-Slaughter Tracts
Deer, Furbearers, and Small Game Hunting



Note A: Logan Lane Pond is for handicapped fishing only, no CAP is required.

Note A

State of Delaware, Sanborn Map Company, Inc., DelDOT

Wildlife Area

Refuge

Safety Zone

CAP Exempt

CAP Required

Maintained Roadway

Pedestrian Trail

Deer Stand

HD Deer Stand

DNERR St. Jones Reserve

Boat Ramp

BOUNDARIES SHOWN ARE APPROXIMATE AND SHOULD ONLY BE USED AS A GUIDE

DEER, FURBEARERS & SMALL GAME HUNTING
TED HARVEY CONSERVATION AREA
LOGAN LANE AND WILSON-SLAUGHTER TRACTS
Effective July 1, 2025 – June 30, 2026

Persons may use state wildlife areas only as directed by the following rules, which have been established by Wildlife Regulations 3900 of the Division of Fish and Wildlife, pursuant to Section 103, 7 Delaware Code. A Conservation Access Pass (CAP) is required for any registered motor vehicle used to access designated public lands owned or managed by the Division of Fish & Wildlife. For more information go to <https://de.gov/fw> or call (302) 739-9912. Please refer to the **General Overview** map for additional access and allowable use information.

GENERAL

1. Violators of wildlife area regulations may be subject to fines and/or revocation of hunting privileges on state wildlife areas for up to one year.
2. Persons who possess, consume, or are under the influence of drugs or alcoholic beverages are prohibited from hunting or possessing firearms on Division Lands.
3. Failure to accurately complete and return harvest data cards may result in loss of hunting privileges.
4. Firearms may not be discharged outside of established hunting seasons. Target shooting is prohibited at any time.
5. All hunters installing temporary deer stands and/or blinds to remain on-site overnight are required to obtain a free registration number at <https://de.gov/fw> or by calling (302) 739-9912. The registration number must be legibly displayed on all stands and/or blinds.

DEER HUNTING

Sunday deer hunting permitted. See Sunday Deer Hunting maps for open areas and hunting implement restrictions.

A. Archery

1. Archery hunting permitted anywhere except within refuges, safety zones, and adjacent to agricultural fields on the Wilson-Slaughter Tract.
2. Archery hunters must register through the lottery and hunt from lottery stands during all firearm deer seasons.
3. Archery hunting is closed during special youth / non-ambulatory disabled deer hunts.
4. Archery hunters may use temporary portable stands. No permanent deer stands, platforms, ladders, or blinds may be constructed. No screw-in steps, tree spikes, screws, or nails are allowed. All parts of a temporary portable deer stand must be removed at the end of each day's hunt unless registered with the Division.

B. Firearm – Muzzleloader, Shotgun, Handgun

1. A Wildlife Area Deer Stand / Waterfowl Blind Lottery Permit is required to hunt during all deer firearms seasons.
2. Stands issued by lottery at the Little Creek Check Station. Drawings held 2 hours before sunrise. A second lottery will be held at 12:00 PM. No permits issued after 1:00 PM.
3. This area **IS NOT OPEN** for the special October antlerless firearms season. Archery hunting is

allowed during this season in accordance with state and area laws.

4. Refuge stands (R1-R6) are open during the youth hunt and on Mondays and Fridays of all firearm seasons beginning on the first Monday of November shotgun season.
5. Handgun hunting during the January handgun season will be allowed on Tuesday, Thursday, and Saturday only.
6. Deer drives are prohibited.
7. Only one firearm permitted per deer stand.
8. Disabled deer hunting locations (HDA, HDB, HDC) are available for non-ambulatory hunters. HDC is closed on all refuge hunt days. These locations are awarded via a lottery held at 11:00 AM the day prior to the hunt. If not awarded, disabled locations are available through the daily lottery.

UPLAND HUNTING

A. Small Game

1. Small game hunters must display at least 400 square inches of blaze orange while hunting on State Wildlife Areas.
2. Squirrel hunting permitted; no permit required.
3. Rabbit hunting by lottery only on Monday, Wednesday, and Friday. Lottery held at 8:00 AM at the Little Creek Check Station. Hunters must vacate the area by 3:30 PM. Maximum of 4 hunters per party per zone.
4. Rabbit hunting closed the week before and the week of December antlerless deer season and during the January shotgun deer season.
5. Hunting prohibited within posted refuges, safety zones, and on the Wilson-Slaughter Tract. Dogs are not permitted to enter refuges for any reason.
6. Dog training is prohibited on this area.

B. Furbearers

1. No trapping except by valid contract holders. Trapping rights awarded through competitive bids. Call (302) 739-9912 for bidding information.
2. Raccoon hunting permitted from Sept 1 – March 31 during legal raccoon hunting seasons.
3. Red fox and coyote may be harvested in season while hunting other game species per these map regulations and hunted during the month of February according to applicable state laws.
4. No fox chasing permitted during any deer firearm season or prior to 1:00 PM during turkey season.

Patrick J. Emory, Director

For further information contact the Division of Fish and Wildlife at (302) 739-9912 or the Kent County HQ at (302) 284-4795.

For emergencies or to report violations please call the Enforcement Section at 1-800-523-3336.