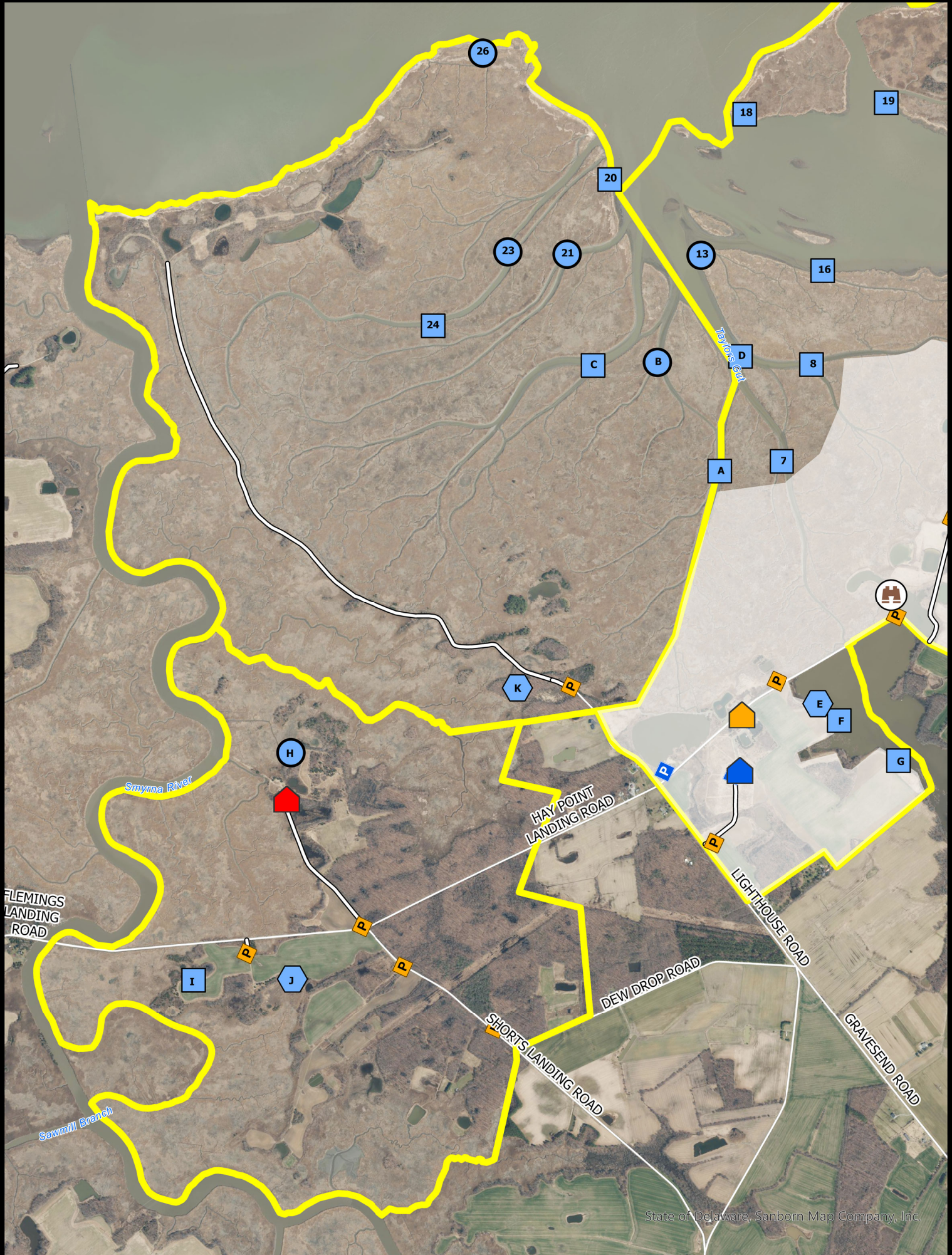








WOODLAND BEACH WILDLIFE AREA

McKay & Lighthouse Island Tracts

Waterfowl & Gamebird Hunting



State of Delaware, Sanborn Map Company, Inc.

-  Wildlife Area
-  Refuge
-  CAP Exempt
-  CAP Required
-  Maintained Roadway
-  Waterfowl Blind
-  HD Waterfowl Blind
-  Waterfowl Blind Site
-  AREC
-  Check Station
-  McKay Field Office
-  Wildlife Viewing Tower



BOUNDARIES SHOWN ARE APPROXIMATE AND SHOULD ONLY BE USED AS A GUIDE

**WATERFOWL & GAMEBIRD HUNTING
WOODLAND BEACH WILDLIFE AREA
Effective July 1, 2024 – June 30, 2025**

Persons may use state wildlife areas only as directed by the following rules, which have been established by Wildlife Regulations 3900 of the Division of Fish and Wildlife, pursuant to Section 103, 7 Delaware Code. A Conservation Access Pass (CAP) is required for any registered motor vehicle used to access designated public lands owned or managed by the Division of Fish & Wildlife. For more information go to <https://de.gov/fw> or call (302) 739-9912. Please refer to the **General Overview** map for additional access and allowable use information.

GENERAL

1. Violators of wildlife area regulations may be subject to fines and/or revocation of hunting privileges on state wildlife areas for up to one year.
2. Persons who possess, consume, or are under the influence of drugs or alcoholic beverages are prohibited from hunting or possessing firearms on Division Lands.
3. Failure to accurately complete and return harvest data cards may result in loss of hunting privileges.
4. Firearms may not be discharged outside of established hunting seasons. Target shooting is prohibited at any time.

WATERFOWL HUNTING

1. A Wildlife Area Deer Stand / Waterfowl Blind Lottery Permit is required to hunt during all waterfowl seasons.
2. All hunting from state-built blinds or blind sites only. Hunters must stay within 35 yards of designated blind sites while hunting.
3. Blinds issued by lottery held at the Woodland Beach Check Station 2 hours before sunrise. Blinds issued until 1:00 PM
4. Marsh blinds are open all days of all regular waterfowl seasons.
5. Blinds within Taylors Gut impoundment and designated goose blinds are open on opening days, Tuesdays, Thursdays, Saturdays, Sundays, and holidays during all regular waterfowl seasons.
6. Blinds E, J, and K are designated for disabled hunters and are awarded via lottery held at 11:00 AM the day prior to the hunt. If not reserved disabled locations are available through the daily lottery.
7. Waterfowl hunting is prohibited on the Lighthouse Island and Cabin Tracts.
8. No more than 3 persons per pit, blind, or blind site.
9. No waterfowl hunting from upland fields, except from designated goose blinds and blind sites.
10. Airboats are prohibited.
11. Park in appropriate parking lots (see map). Do not park at the ramp or on the side of the road. Do not drive into fields.

For emergencies or to report violations please call the Enforcement Section at 1-800-523-3336.

12. Hunters using marsh and river blinds must have a boat and required safety equipment.
13. This area will be open during the Snow Goose Conservation Order. See official seasons and regulations. No permit or sign-in required during the conservation order.

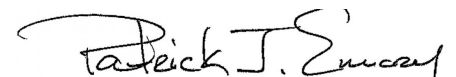
DOVE HUNTING

1. Only nontoxic shot may be possessed while hunting doves during the early season.
2. Dove hunting permitted anywhere except within refuges and safety zones, no permit required.

TURKEY HUNTING

1. Turkey hunting by permit only. Permits awarded through preseason lottery. See Delaware Hunting and Trapping Guide for application.

Harvesting or attempting to harvest Northern Bobwhite Quail is prohibited.


Patrick J. Emory, Director

For further information contact the Division of Fish and Wildlife at (302) 739-9912 or the Kent County HQ at (302) 284-4795.