

# White Clay Creek State Park

## Road Closures



0 1,500 3,000  
Feet

PENNSYLVANIA  
DELAWARE

Thompson Station Road - 1.2 miles

Chambers Rock Road

Pleasant Hill Road

Hopkins Bridge Road

Thompson Station Road





Nine Foot Road

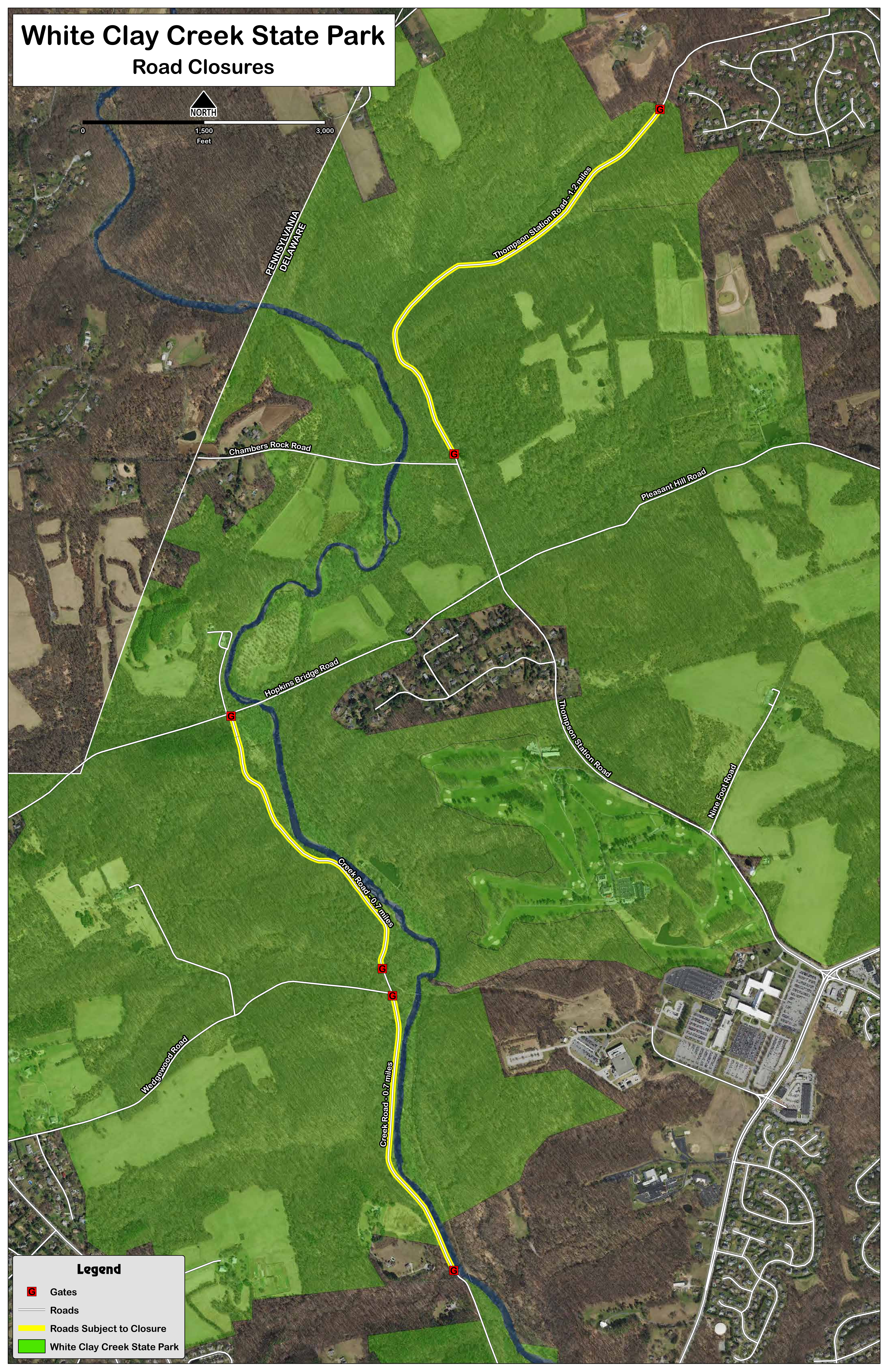
Creek Road - 0.7 miles

Creek Road - 0.7 miles

Wedgwood Road

### Legend

-  Gates
-  Roads
-  Roads Subject to Closure
-  White Clay Creek State Park



# Roads Subject to Closure

- **Section of Thompson Station Road just north of the Park Office**
  - About 1.2 miles in length, gated at both ends
  - It is winding, narrow, and encroached with vegetation. It is no longer safe for two way traffic.
  - One way traffic is available during certain peak fishing and hunting times, as well as other limited circumstances
  - Otherwise it is closed to vehicles and accessible only on foot or by bicycle



- **Section of Creek Road between Hopkins and Wedgewood Roads**
  - About 0.7 miles in length, gated at both ends
  - It is gravel, not paved with asphalt, and has several small wooden bridges
  - One way traffic is available during Mondays and certain peak fishing times. It is also used for park programs, especially school groups using buses.
  - Otherwise it is closed to vehicles and accessible only on foot/bike/horse



- **Section of Creek Road just south of Wedgewood Road**
  - About 0.7 miles in length, bollards at both ends
  - It is severely eroded where adjacent to the Creek, has one dangerous curve, and is no longer safe for traffic
  - It has been permanently closed to vehicles since about 2006
  - It is accessible on foot, by bicycle, or by horse

