

Brandywine Creek State Park Trail Plan Public Meeting

March 15, 2023

1



DELAWARE DEPARTMENT OF
NATURAL RESOURCES AND
ENVIRONMENTAL CONTROL

Brandywine Creek Trail Plan Goal

- Take a holistic approach to trail planning to include connectivity to communities and National Park Service
- Address unauthorized “trails” that are unsustainable
- Expand biking and equestrian opportunities
- Include multiple user groups, NPS
- Continue to minimize development



Brandywine Creek Trail Plan Overview

- Division began stakeholder meetings in 2014
- 18 Field visits with park staff
- 10 Division trail team meetings
- 11 Stakeholder meetings
- Two Public open houses
- Six Council meetings
- 2016 Hydrology and Watershed Management Study
- 2018 Trail Surfacing Material Study
- Stakeholder and organization consultation
 - Delaware Equine Council, Delaware Running Club, Trail Dawgs, Wilmington Trail Club, Trail Spinners, Friends of Brandywine, National Park Service, Council on Greenways and Trails, Recreation and Trail Program Advisory Team, Parks and Recreation Council and Wilmington Area Planning Council (WILMAPCO)

Brandywine Creek Trail Plan Overview

- Existing 16.6-mile trail system increases by 1.6 miles
- 9.2 miles of single-track trail will be reduced to 8.7 miles by eliminating unsustainable trail segments
- 7.4 miles of double track will increase to 9.5 miles
- Poor trail sustainability will be reduced from 7.1 to 5.9 miles
- 12.6 miles or 90% of designated pedestrian only to multi-use

Current and Planned Trail Characteristics

Trail Characteristics	Current Trail System	Planned System	Change in Mileage	% Planned System
Total Mileage	16.6	18.2	Increased 1.6	100%
Surface				
Natural	13.3	14.3	Increased 1.0	79%
Hardened	3.3	3.9	Increased 0.6	
Asphalt	0.8	2.7	Increased 1.9	15%
Stone	2.5	1.2	Reduced 1.3	6%
Width				
Single Track	9.2	8.7	Reduced 0.3	48%
Double Track	7.4	9.5	Increased 2.1	52%
Permitted Use				
Pedestrian Only	12.6	1.2	Reduced 11.4	7%
Pedestrian/Bike	1.3	7.4	Increased 6.1	41%
Pedestrian/Equestrian	0.5	0	Reduced 0.5	0%
Pedestrian/Bike/Equestrian	2.2	9.6	Increased 7.4	52%
Accessibility				
Accessible	1.6	3.8	Increased 2.2	21%
Not Accessible	15.0	14.4	Reduced 0.6	79%
Sustainability				
Good	8.2	14.8	Increased 6.6	81%
Fair	1.3	2.2	Increased 0.9	12%
Poor	7.1	1.2	Reduced 5.9	7%

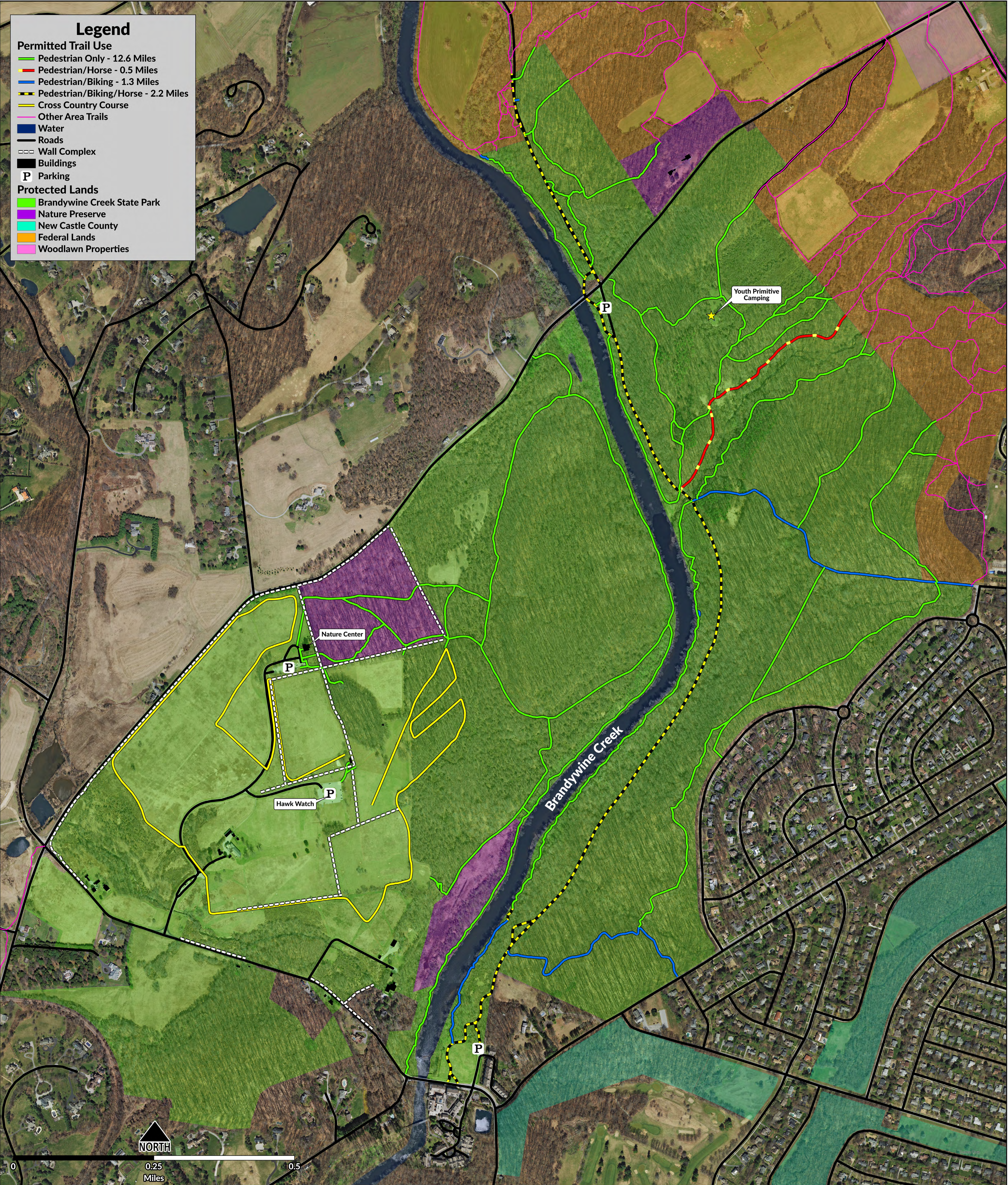


Brandywine Creek State Park Trail Plan Public Meeting



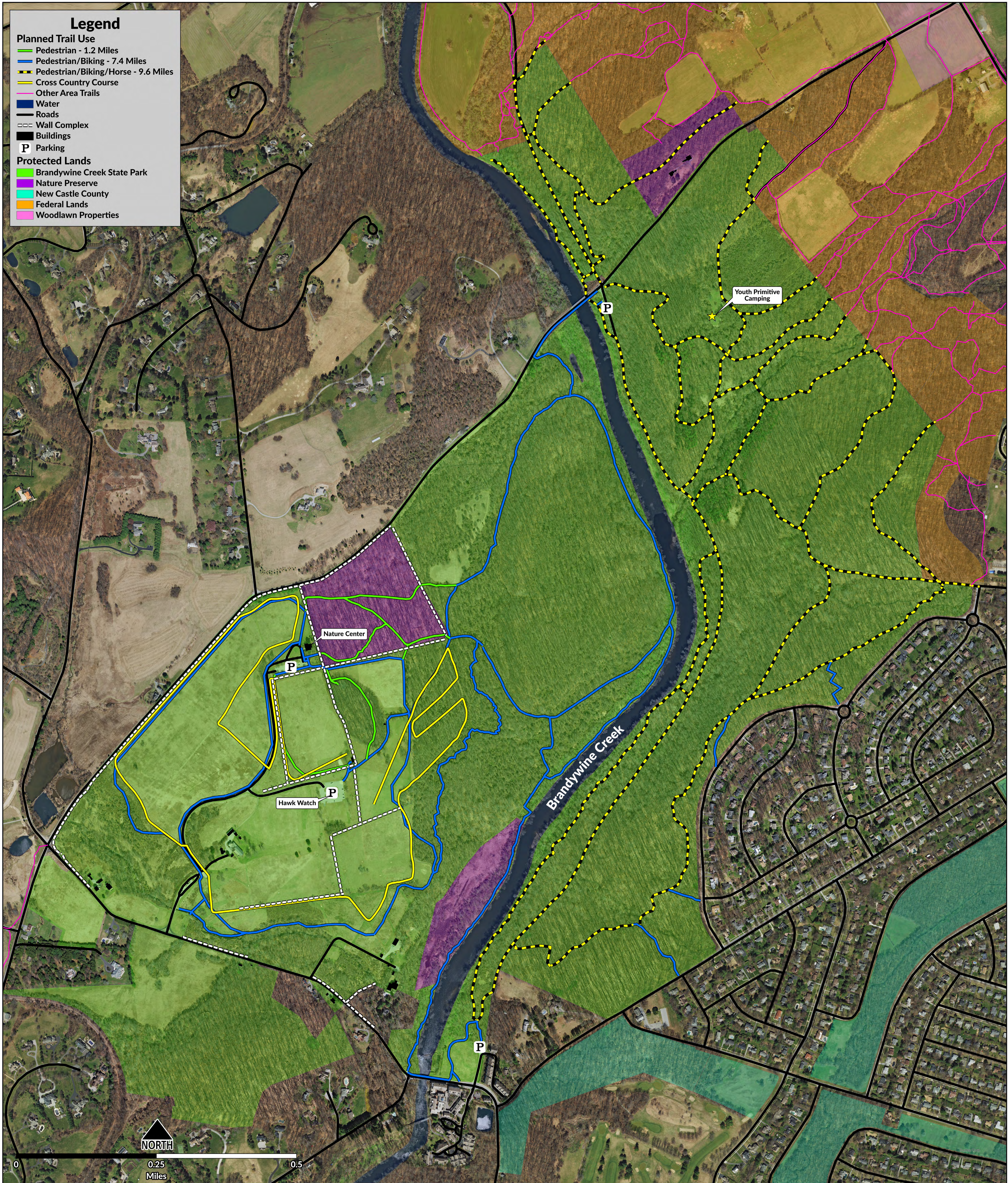
BRANDYWINE CREEK STATE PARK

EXISTING TRAIL USES



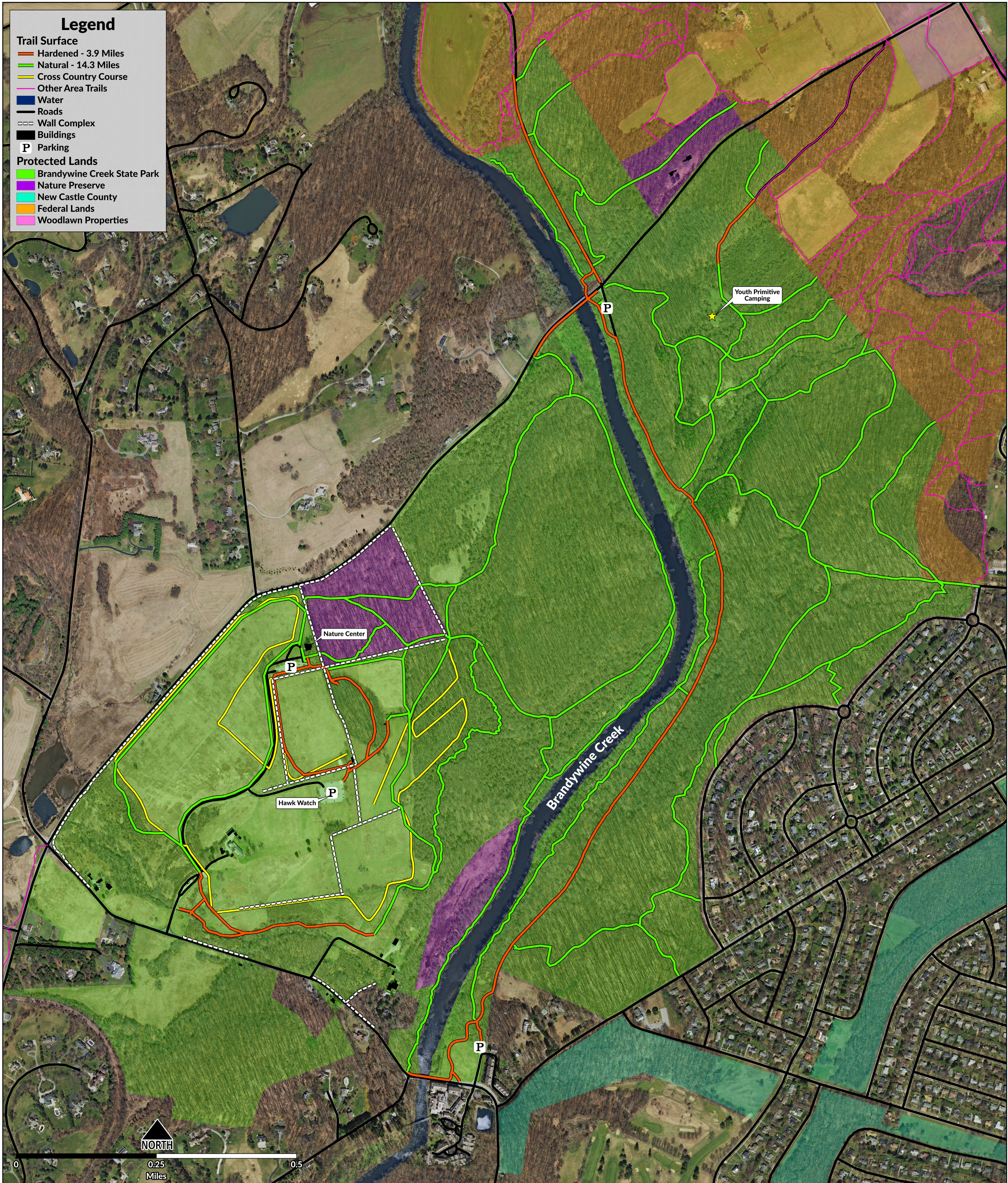
BRANDYWINE CREEK STATE PARK

PLANNED TRAIL USES



BRANDYWINE CREEK STATE PARK

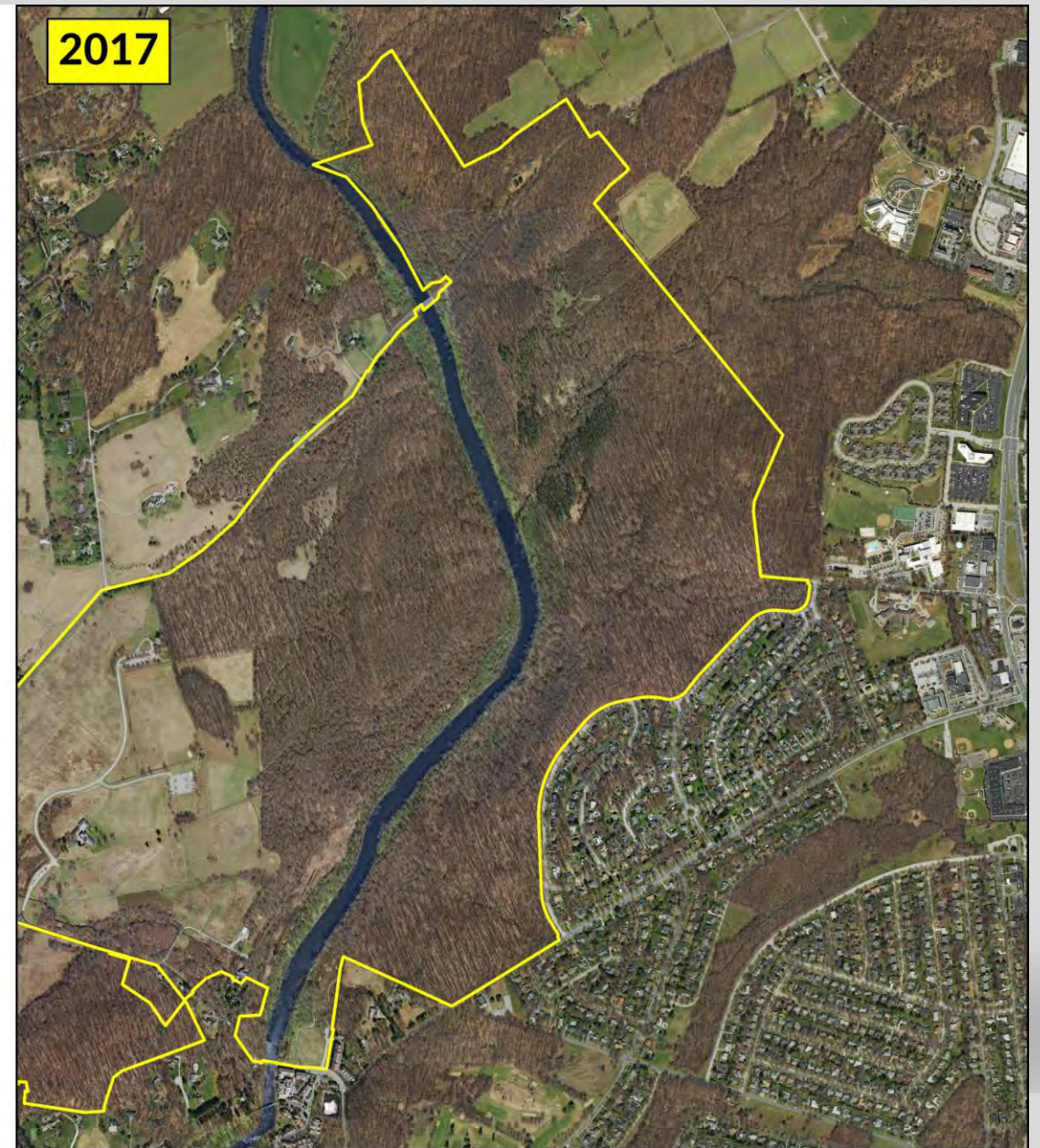
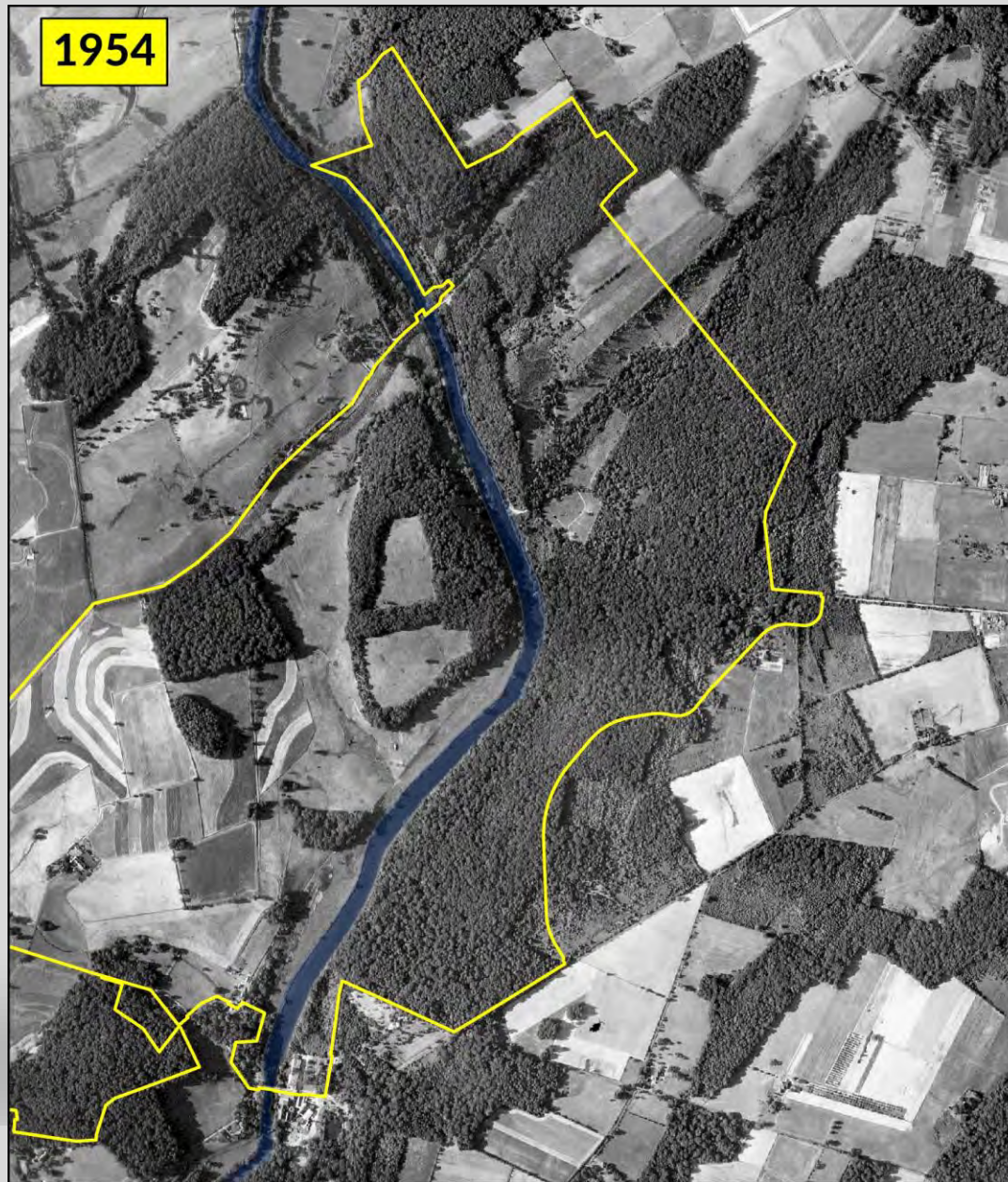
PLANNED TRAIL SURFACES



Trail Challenges

- Creek Road reconstruction for trail use in 2000
- 5th highest utilized trail in the state
- 2nd highest in NCC (Tri-Valley Trail)
- Storm Damage since 2000
 - 2005
 - 2006
 - 2011
 - 2012
 - 2018
 - 2020
 - 2021

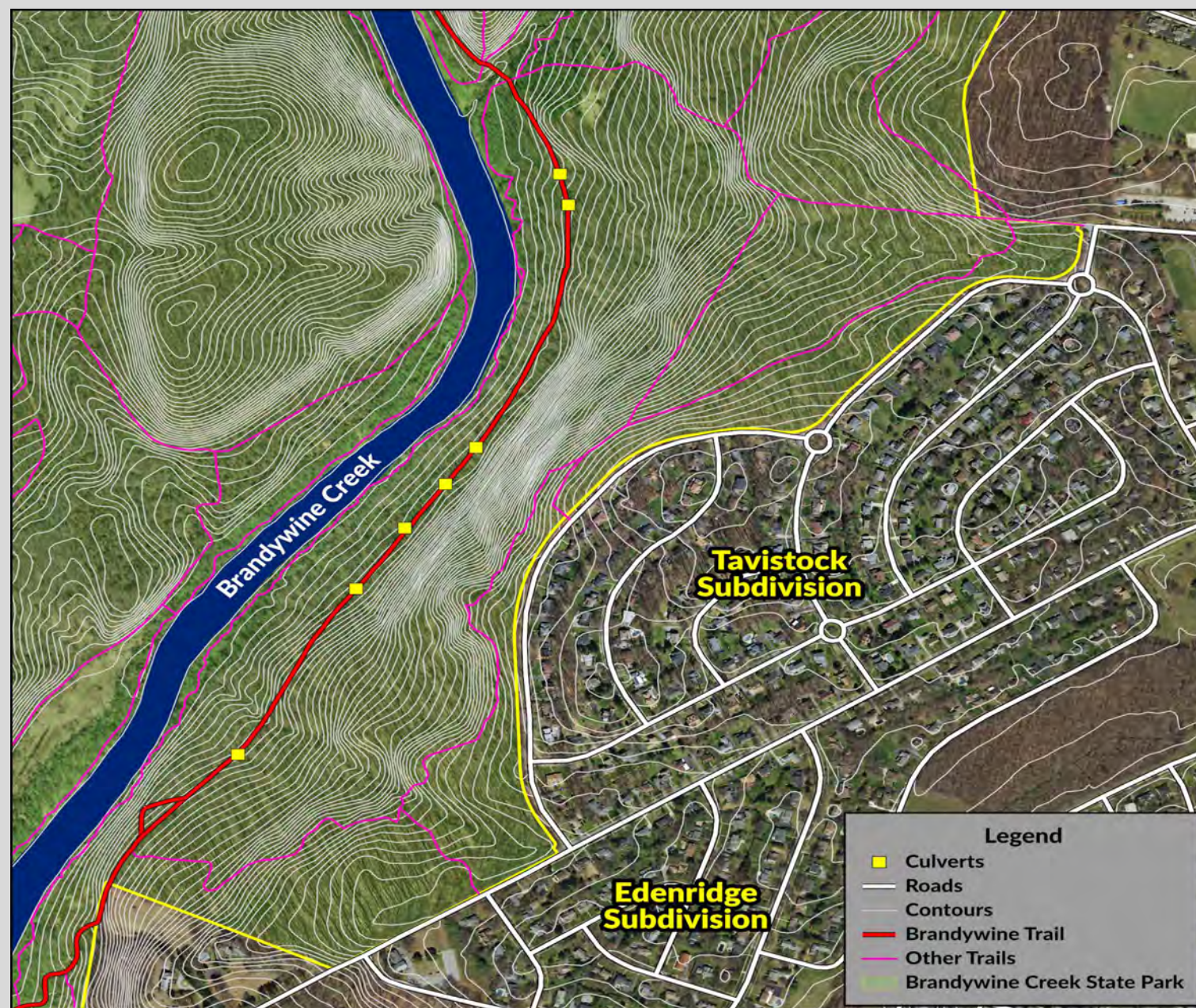




March 15, 2023



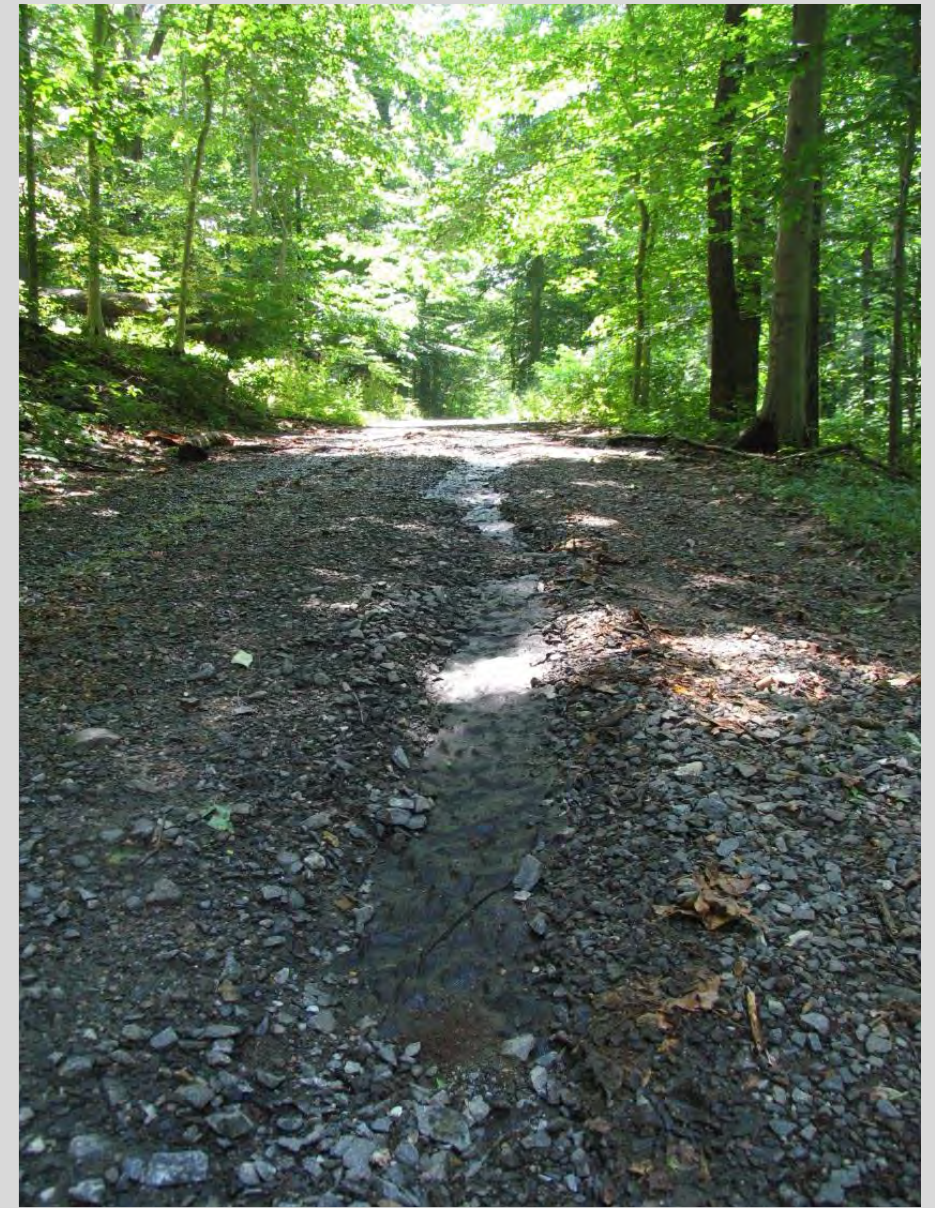




Trail Challenges



Above image: 2006 storm
Right image: 2012 storm damage



Trail Challenges



Replacement of the Rocky Run Bridge and paving from the parking lot to the trail in 2016. No additional repairs were made to the paved section from the 2020 and 2021 flooding events.

Trail Challenges



Since 2021, Brandywine Creek staff deposited over 80 tons of stone dust/gravel and committed over a month of staff time for repairs



March 15, 2023



12



DELAWARE DEPARTMENT OF
NATURAL RESOURCES AND
ENVIRONMENTAL CONTROL



March 15, 2023



13



DELAWARE DEPARTMENT OF
NATURAL RESOURCES AND
ENVIRONMENTAL CONTROL



March 15, 2023

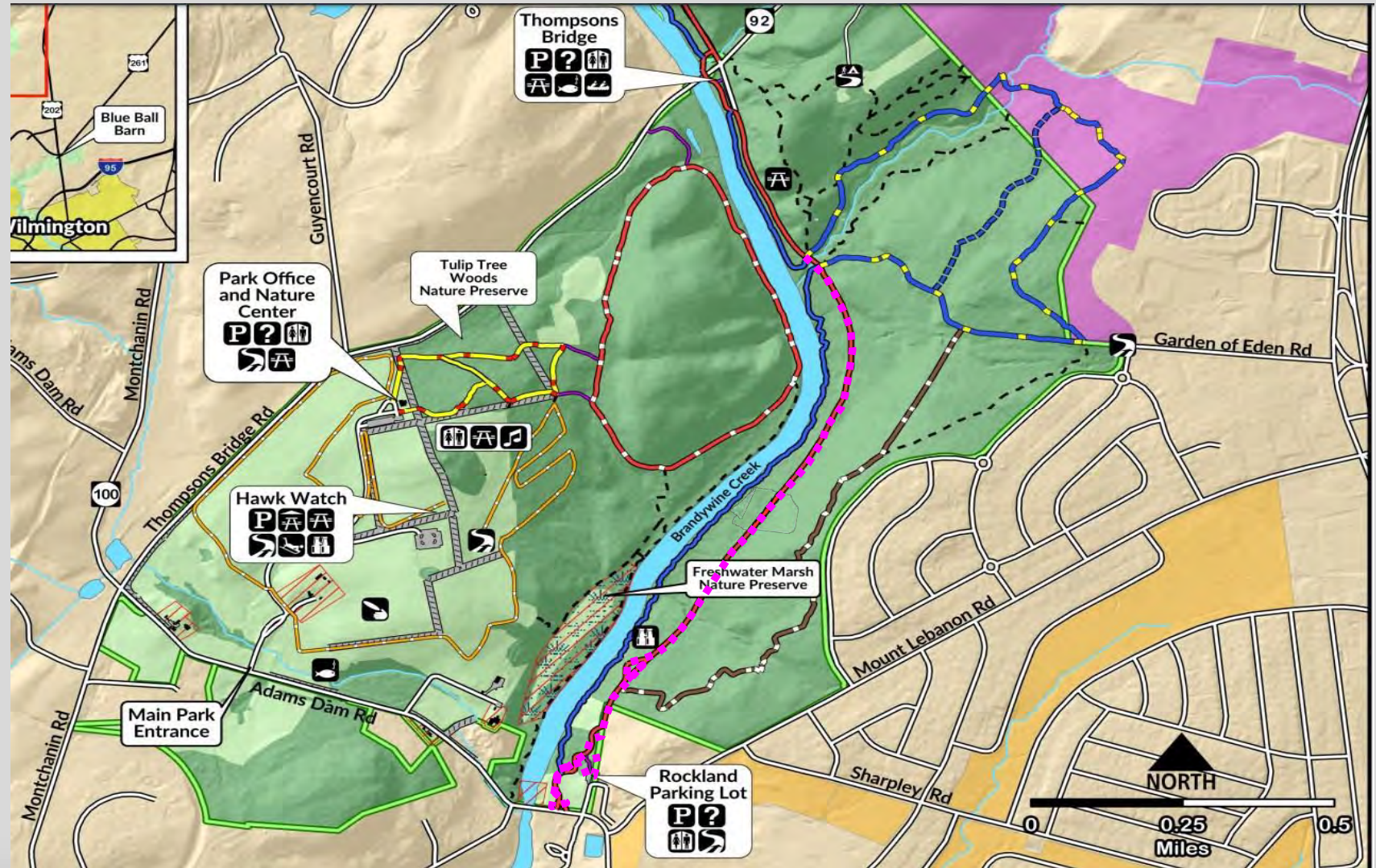


March 15, 2023



Brandywine Trail Construction Project

Trail closed until the end of construction, projected to be early May.



Brandywine Trail Construction Project

- Regrading swales, inlets and outlets adjacent to 14 culvert pipes
- Clean out any debris and vegetation
- Add rip rap in areas to stabilize
- Replace one culvert pipe with a new, larger pipe
- Add two small culvert pipes (new)
- Addition of five new 8' x 6' landing pads to assist with accessibility
- One-mile paved trail with 2.5" asphalt

Brandywine Creek Improvements

- Thompson's Bridge CXT bathroom
- Historic renovations and repairs
- Park office bathroom renovation
- Prescribed burn



Comments?

To submit comments visit
destateparks.com/contact
and select Brandywine
Creek State Parks Trail
Plan from the location
drop-down menu

