



DELAWARE STATE PARKS

DNREC EDA Grant Campground and Recreational Facility Improvements Killens Pond State Park Public Informational Session

September 5, 2024



| The Project Team



- Project Lead
- Multi-Disciplinary Engineering Firm
- 3000+ Employees
- 20+ Years Experience with DNREC
- 300+ Parks Projects from Concept to Completion



- Architect of Record
- Design-Focused Architecture, Interior Design, & Landscaping
- Successful History of DNREC Projects
- Collaborative & Insightful Design Approach



- National Campground Consulting Specialist
- Innovative & Forward-Thinking Design
- 1700+ Campground & OH Projects Nationwide
- Architectural & Design Trend Forecasting



- Cost Estimating Expert
- Network of Contractors & Construction Managers Provides Market Insight
- Trusted Century Partner

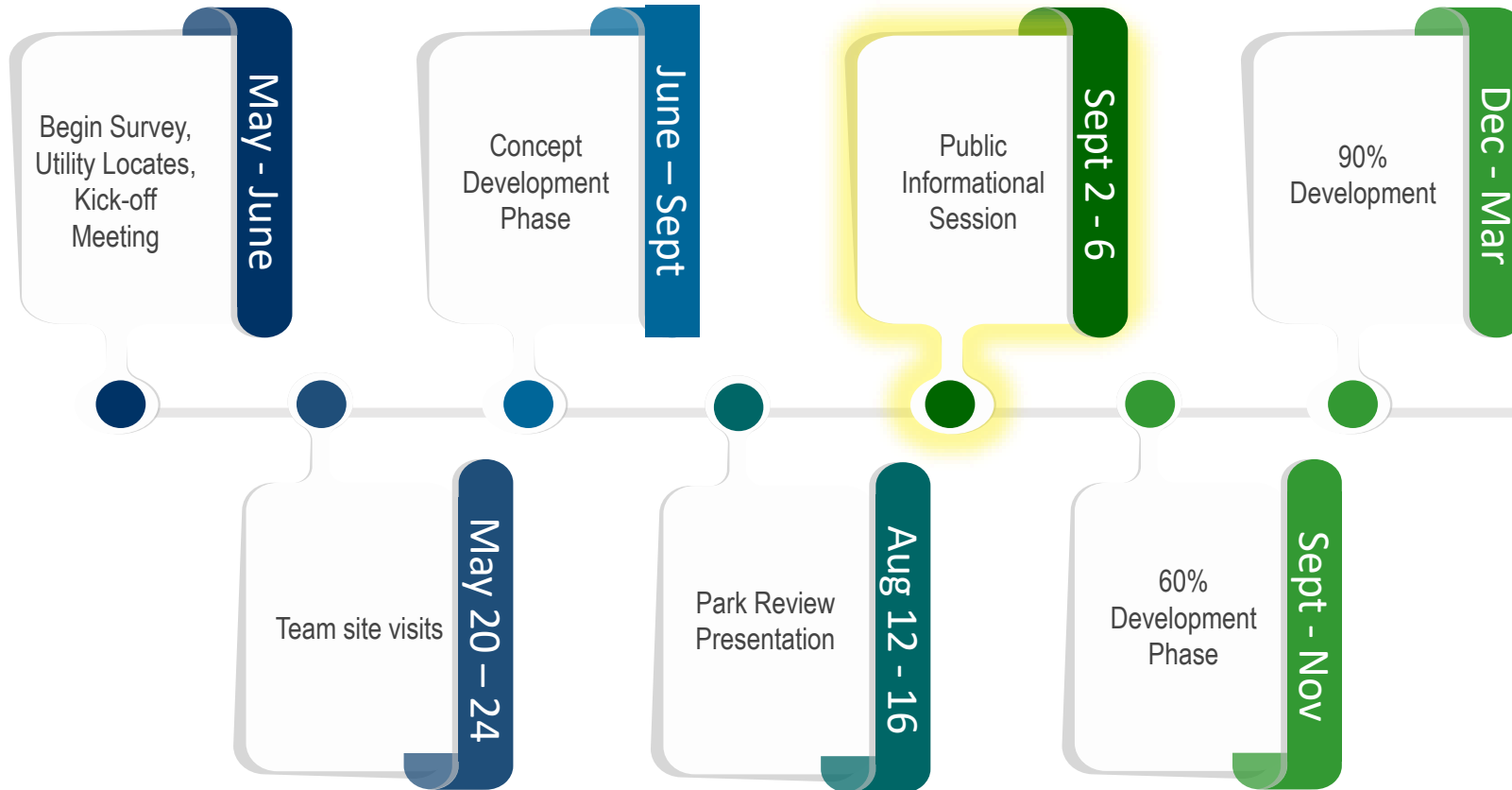
| Project Summary

- Infrastructure Assessments & Surveys
- Holistic Campground Planning and Visioning
- Utility Evaluations & Improvements
- Comprehensive Infrastructure Improvements
- Expanded Camp Store
- Recreational Marine Structures

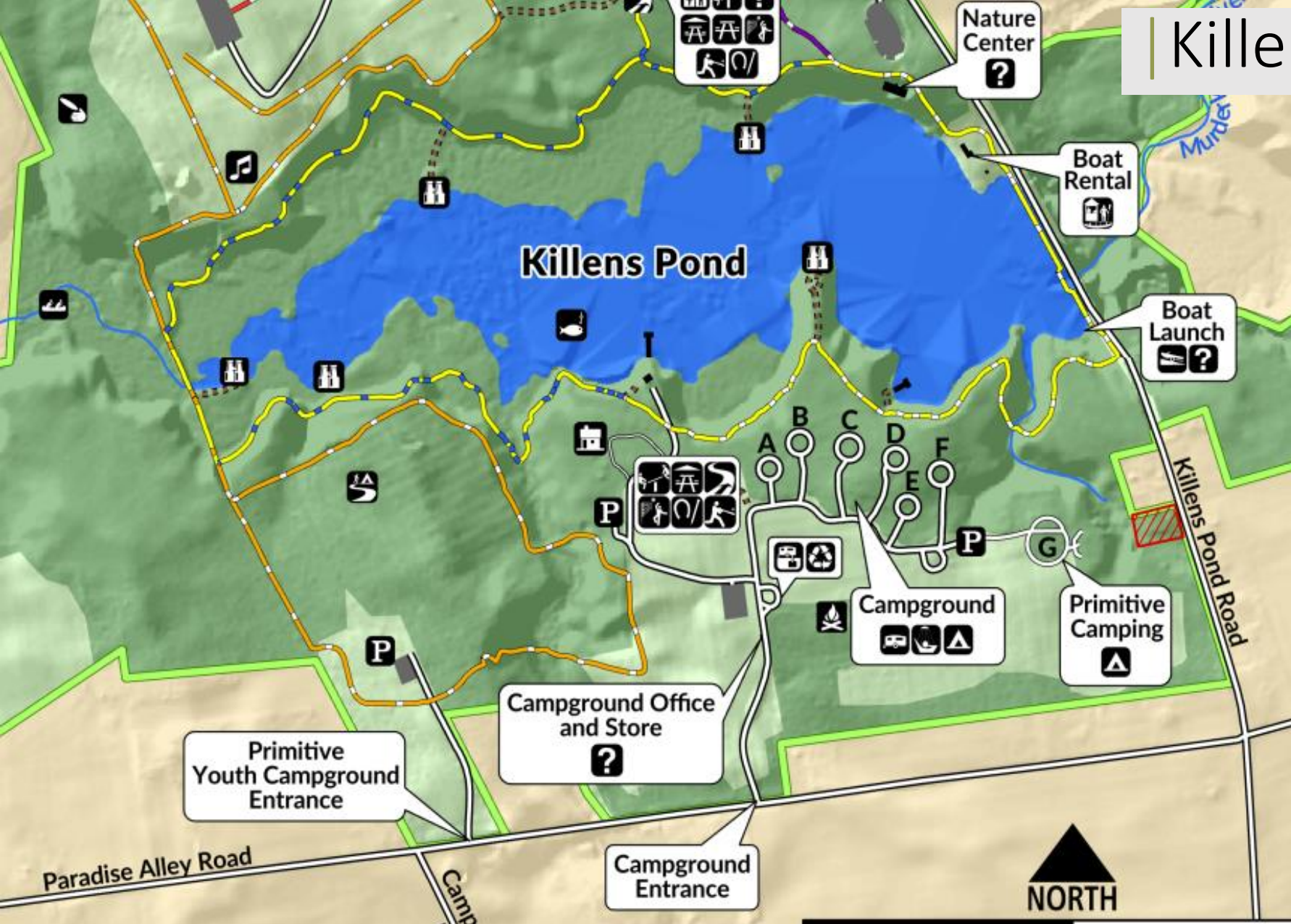


- Projects are highly schedule driven
- There are key opportunities for the Parks and public to provide input
- No construction is included at this point
- We need everyone's support!

Schedule – Killens Pond State Park

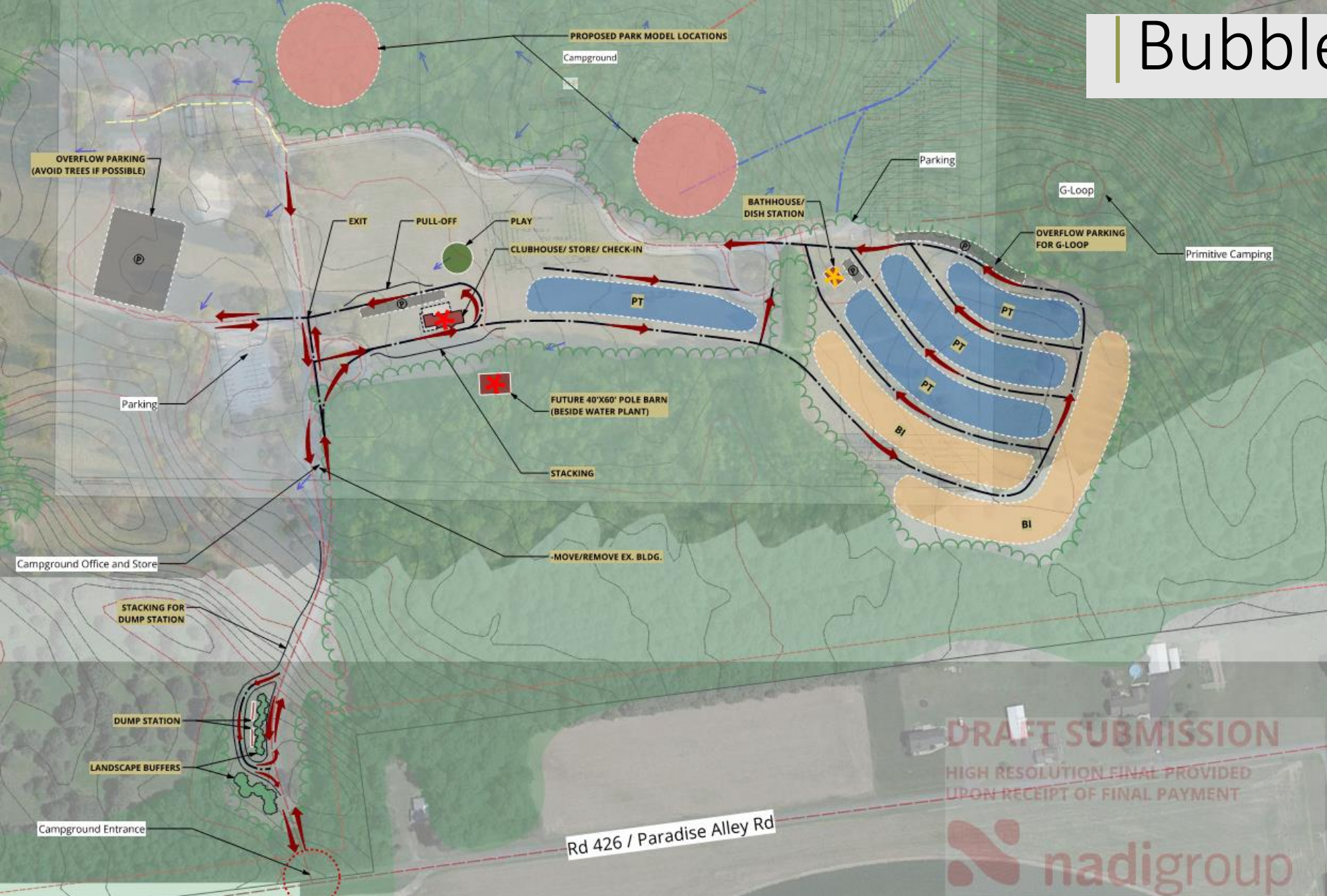


Killens Pond State Park



- Evaluation of water, wastewater, and electrical utility networks
- Conceptual Plan for Campground Expansion
- Concept for G-Loop Bathhouse
- Camp Store with Camper Facilities
- Re-designed Dump Station and New Septic System
- Six New Boat Docks

Bubble Diagram



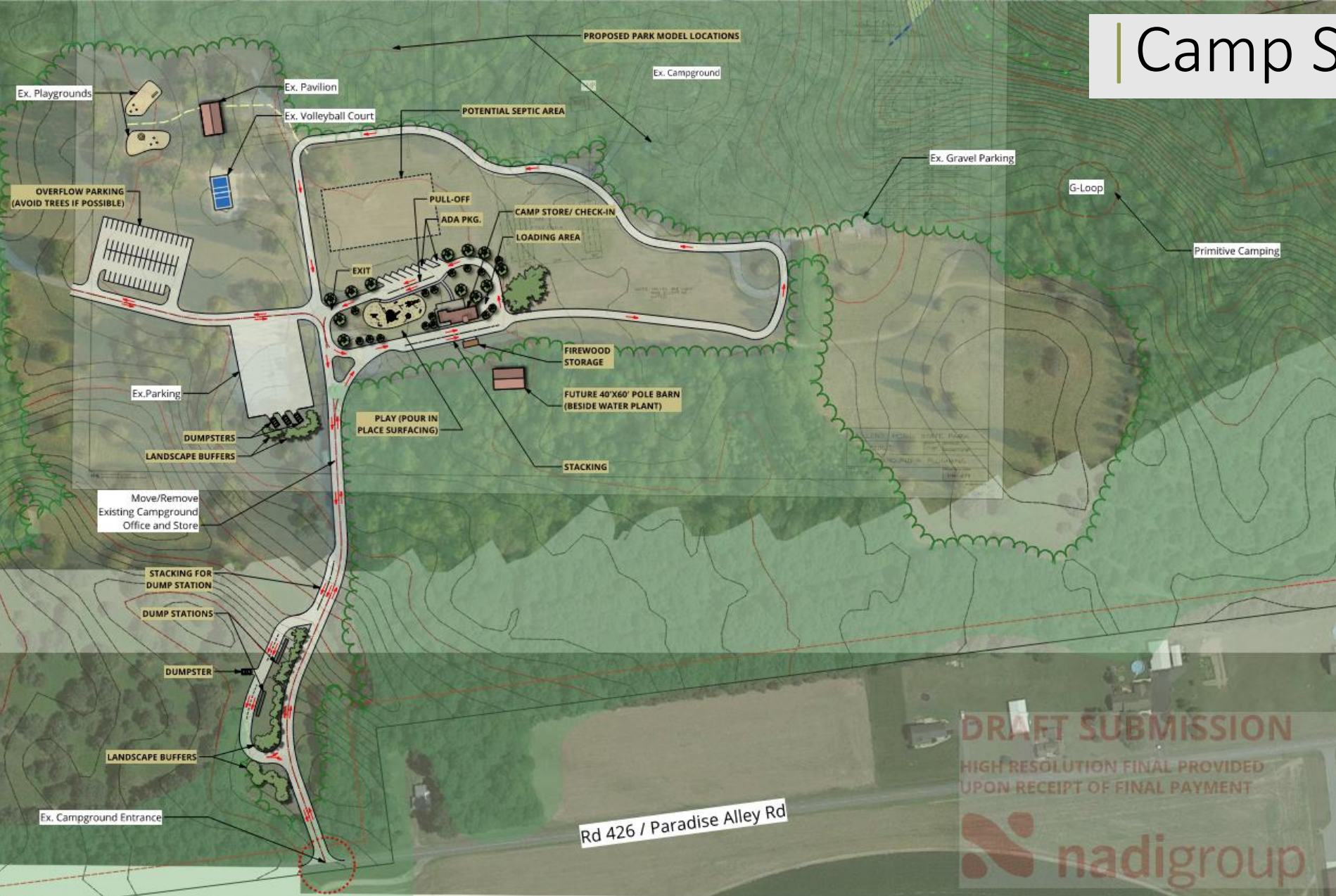
- Improves vehicle circulation within the park boundaries
- Relocates existing dump station and increases capacity
- Provides a larger, centrally located camp store
- Allows for larger pull-through and back in RV spaces with 3-point hook ups
- Shows the initial camp store phase and full campground expansion
- Locates new bathhouse to serve G-Loop tent camping
- Provides additional overflow parking

Campground Conceptual Expansion



- Conceptual campground expansion – not currently scheduled for detailed design and construction
- Provides 37 back-in spaces and 35 pull-thru spaces
- RV space size is standardized and can accommodate larger campers
- All RV spaces will have 3-point hook ups (water, sewer, and electricity)
- Provides 26 overflow parking spaces
- Bathhouse, including showers, located near G-Loop tent camping

Camp Store Schematic



- Detailed layout of the proposed camp store with stacking lanes for check-in, play area, laundry services, firewood, and parking
- Provides 58 overflow parking spaces to accommodate pavilion rentals
- Details proposed dump station reconfiguration with 4 connection points
- Shows new septic area to allow for utility expansion
- Improves traffic circulation within the campground

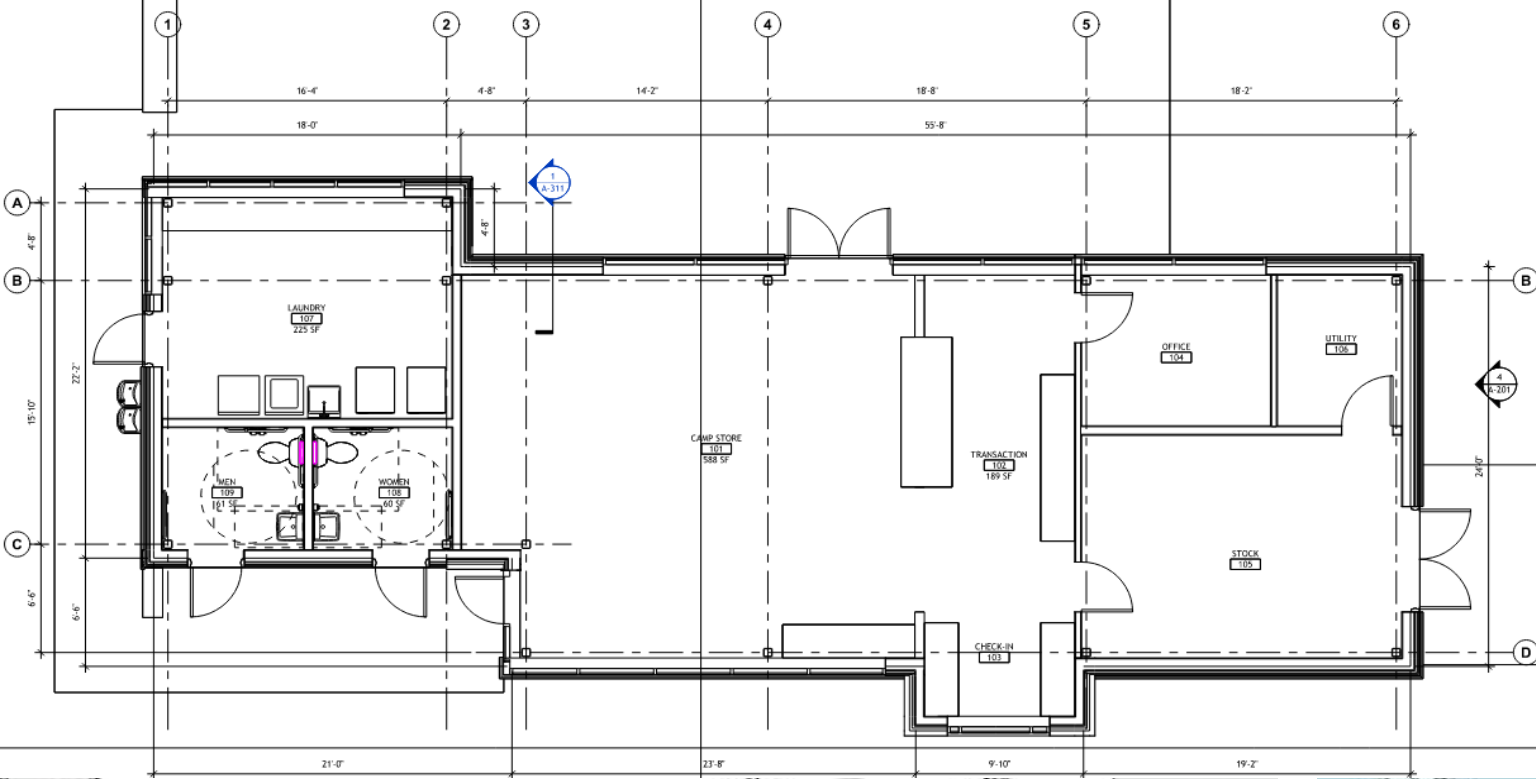
Camp Store Concept



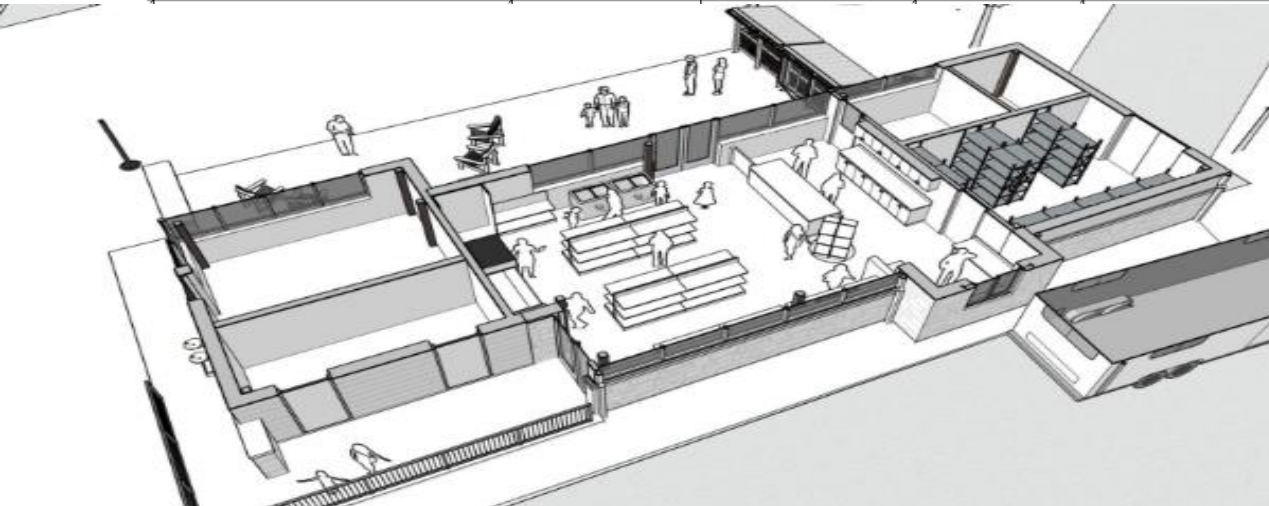
- Central location within campground
- Large windows for natural light and views
- Improved external firewood storage
- Loading area for park staff



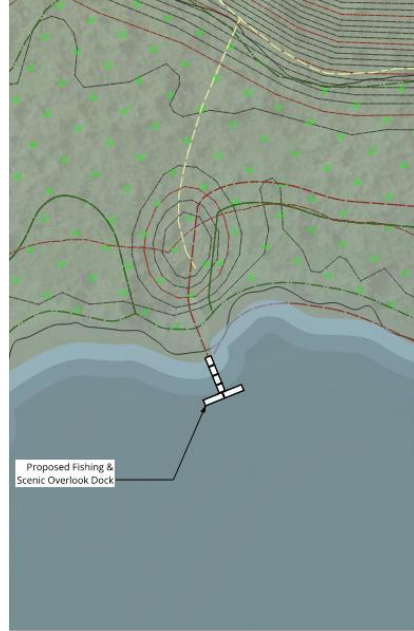
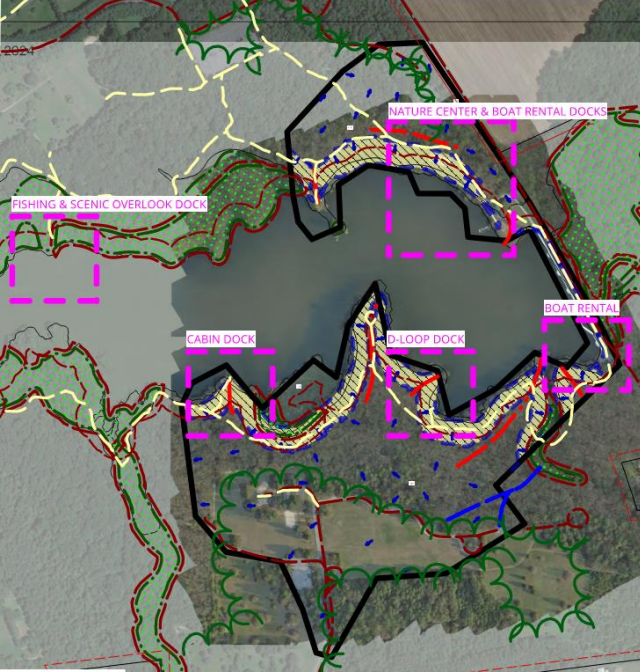
Camp Store Floorplan



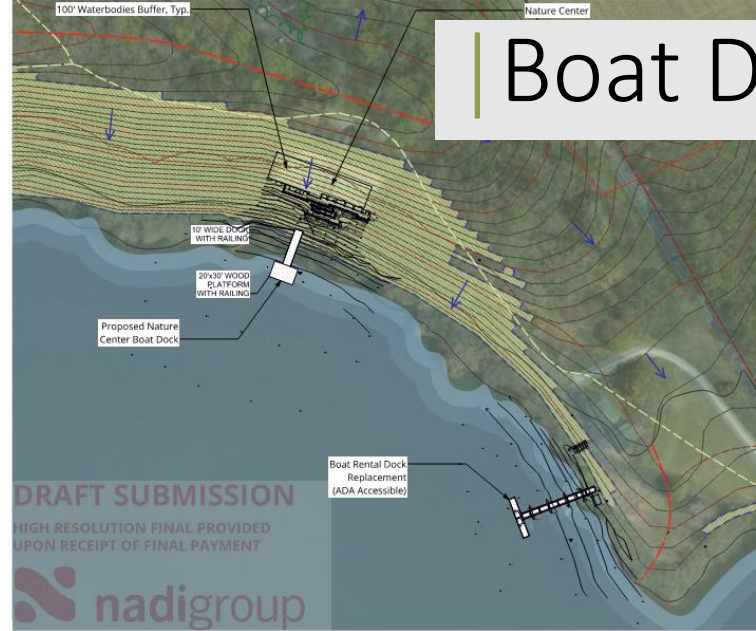
- Expanded camp store to allow for additional merchandise and amenities
- Drive-thru window to facilitate camper check-in
- Access to enhanced laundry services
- Public restrooms and water fountains available



Boat Docks Schematic

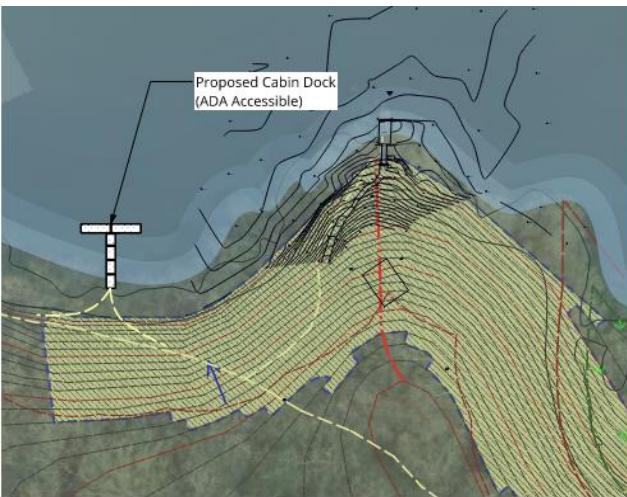


Fishing and Scenic Overlook Dock

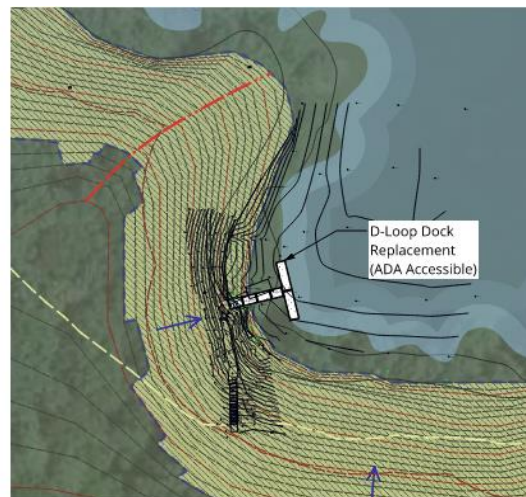


Nature Center and Boat Rental Docks

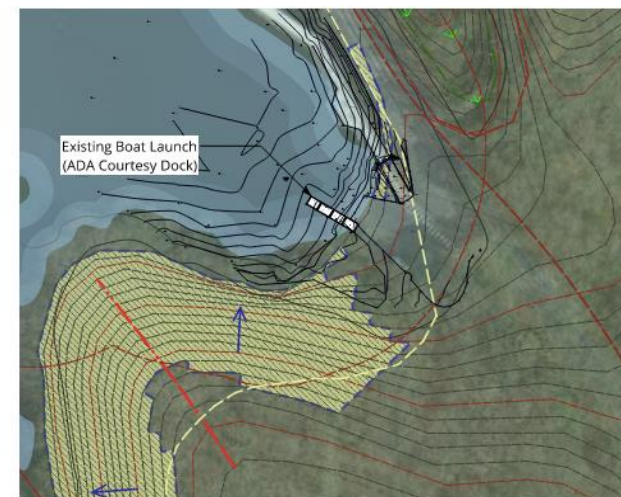
- Six new boat docks are located around the perimeter of the pond
- Select docks will provide ADA kayak launches
- Courtesy dock will be added to existing boat launch area
- Replacing boat rental area dock
- Additional docks will be provided for fishing and wildlife viewing
- Existing cabin dock will be relocated to an accessible point for all cabin renters
- The proposed nature center pier is larger than the other docks and constructed out of timber
- All docks, except for the nature center, are proposed as aluminum floating docks



Cabin Dock



D-Loop Dock



Boat Launch Dock

The link for information on this workshop including the survey form is:

<https://dnrec.delaware.gov/events/killens-pond-state-park-public-workshop>

The direct link to the survey form is:

<https://app.smartsheet.com/b/form/e773fc957b5b449f86b341d8c94671b4>