



DELAWARE STATE PARKS

DNREC EDA Grant Campground and Recreational Facility Improvements Trap Pond State Park Public Informational Session

October 03, 2024



| The Project Team



- Project Lead
- Multi-Disciplinary Engineering Firm
- 3000+ Employees
- 20+ Years Experience with DNREC
- 300+ Parks Projects from Concept to Completion



- Architect of Record
- Design-Focused Architecture, Interior Design, & Landscaping
- Successful History of DNREC Projects
- Collaborative & Insightful Design Approach



- National Campground Consulting Specialist
- Innovative & Forward-Thinking Design
- 1700+ Campground & OH Projects Nationwide
- Architectural & Design Trend Forecasting



- Cost Estimating Expert
- Network of Contractors & Construction Managers Provides Market Insight
- Trusted Century Partner

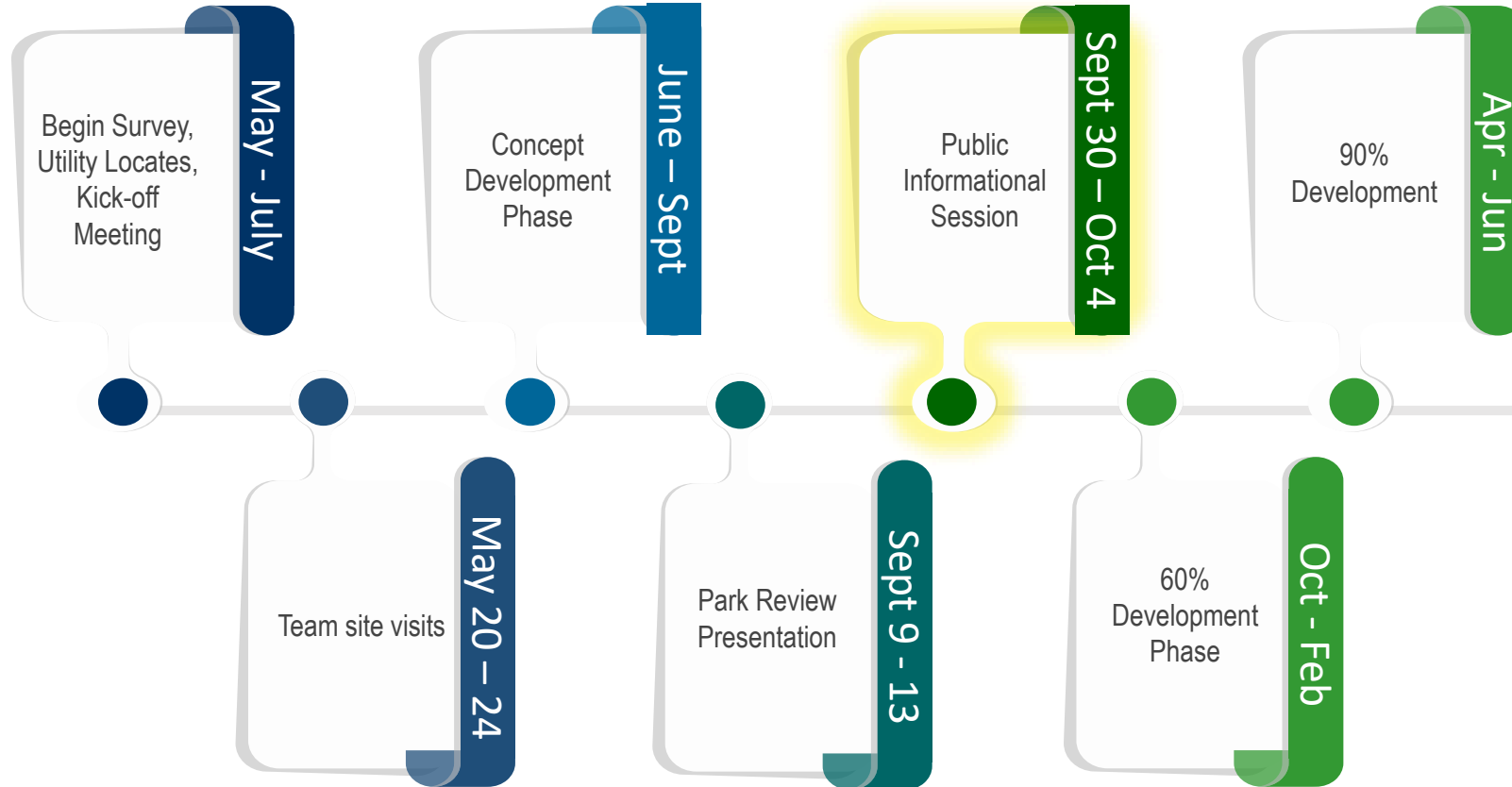
| Project Summary

- Infrastructure Assessments & Surveys
- Modified Campground with Upgraded Amenities
- Holistic Campground Planning and Visioning
- Utility Evaluations & Improvements
- Comprehensive Infrastructure Improvements
- New and Enhanced Boat Docks
- New Boat Rental Facility
- Construction Funds Not Yet Allocated

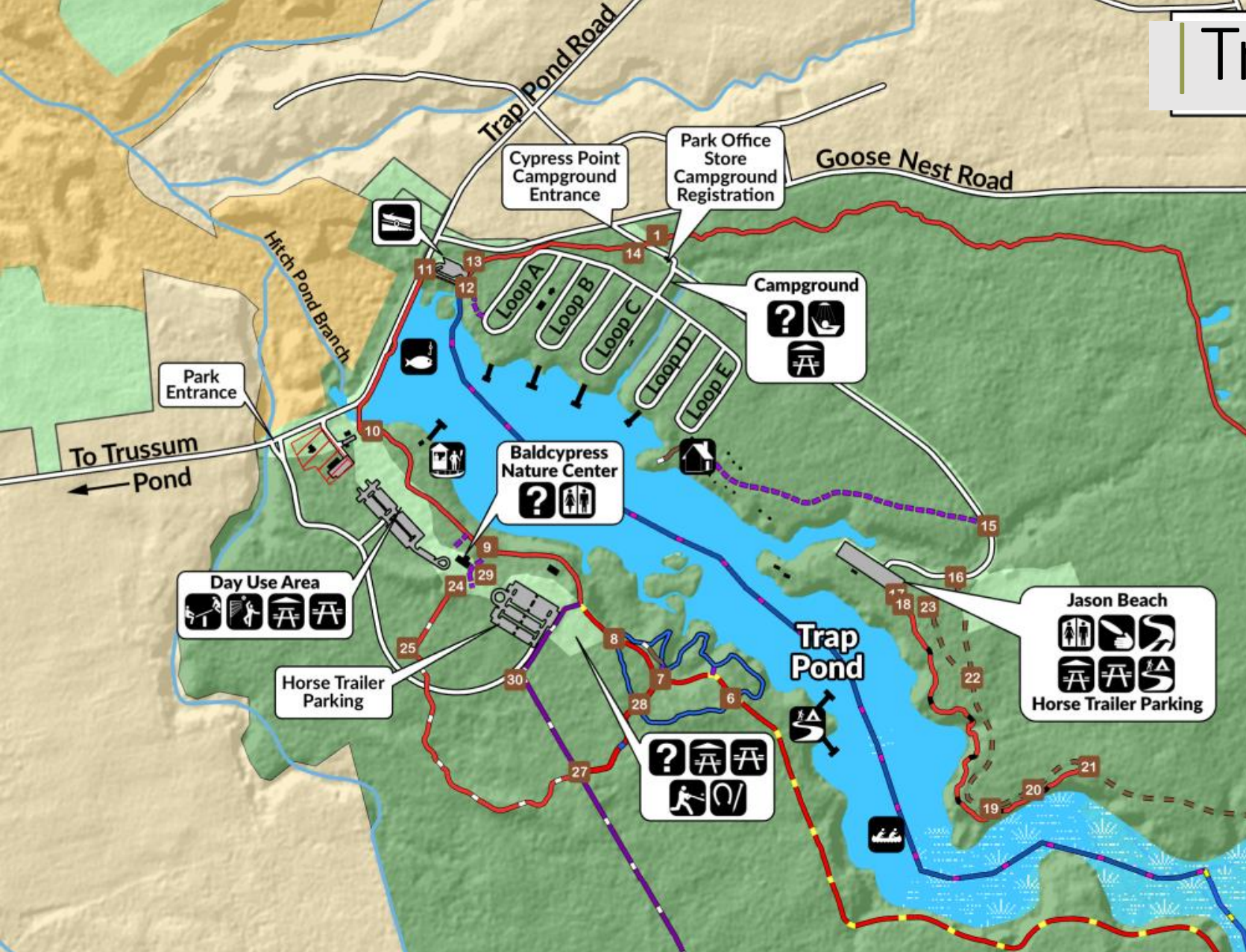


- Projects are highly schedule driven
- There are key opportunities for the Parks and public to provide input
- No construction is included at this point
- We need everyone's support!

Schedule – Trap Pond State Park



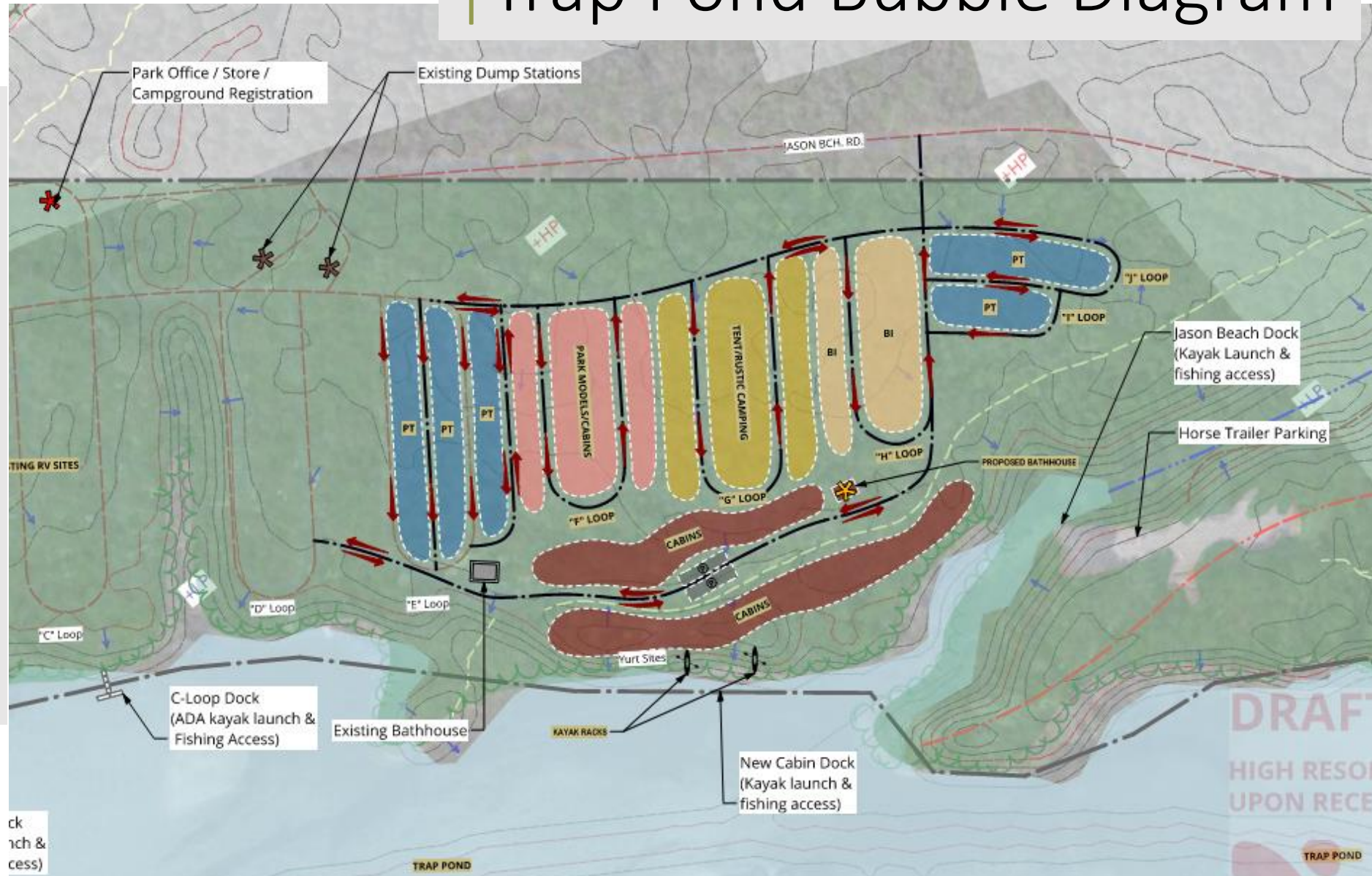
Trap Pond State Park



- Evaluation of water, wastewater, and electrical utility networks
- Detailed Plan for Existing Campground Updates
- Conceptual Plan for Secondary Campground Expansion
- Improved and Upgraded Boating Amenities
- Enhanced Camping Experience

Trap Pond Bubble Diagram

- Upgrades and diversifies campground amenities
- Allows for larger pull-through and back-in RV spaces with 3-point hook ups
- Provides new bathhouse to serve additional users
- Proposes full-service cottage complex with pond access



Ex. Park Office / Store /
Campground Registration

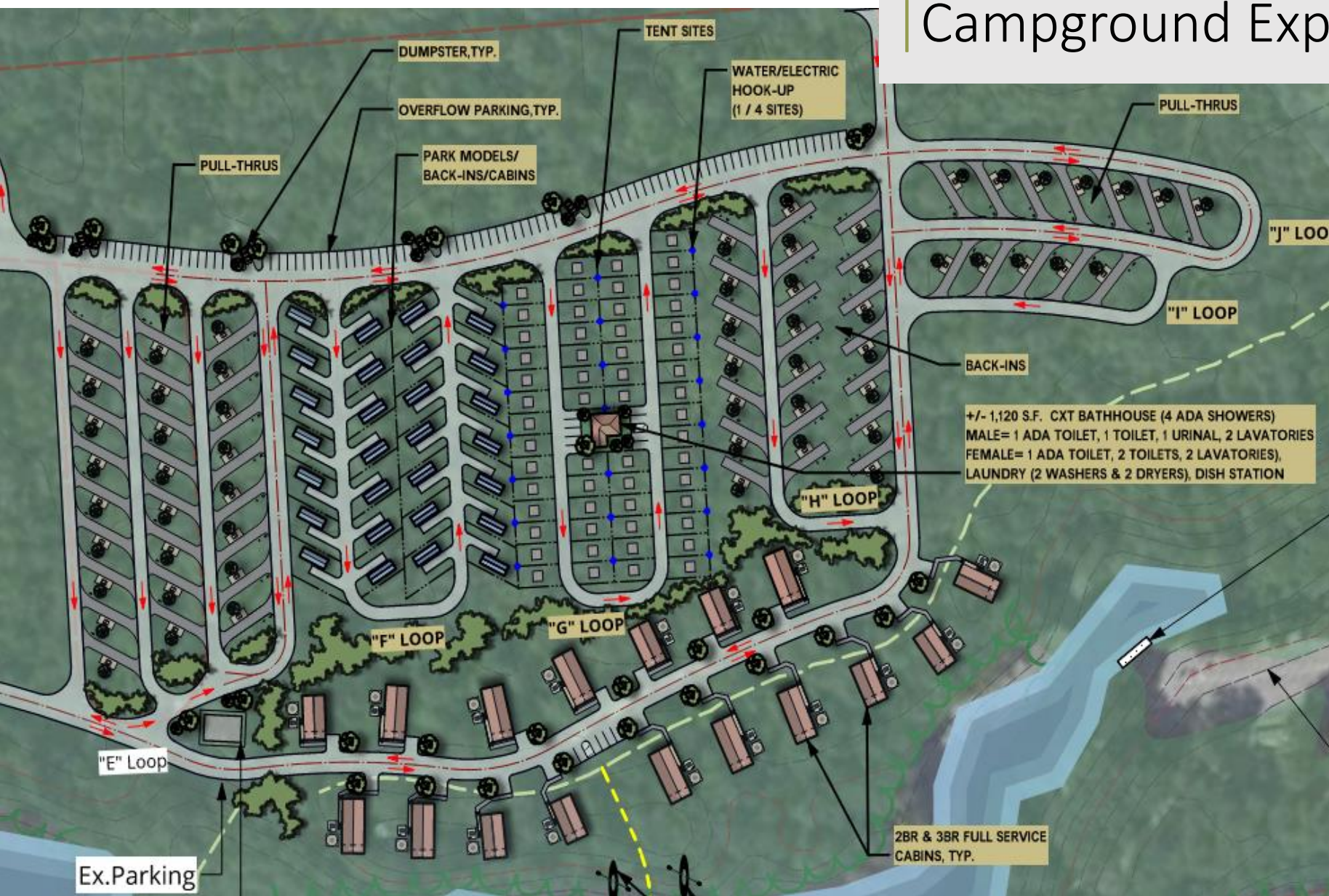
Existing Dump Stations

Campground Addition Schematic



- Maintains connectivity with existing campground
- 25 pull-thru, 28 park models/back-in spaces, 17 full-service cottages
- Allows for larger pull-through and back in RV spaces with 3-point hook ups
- Provides an additional exit from the campground
- Expansion of Primitive Youth Camping in Jason Beach area
- 83 overflow parking spaces

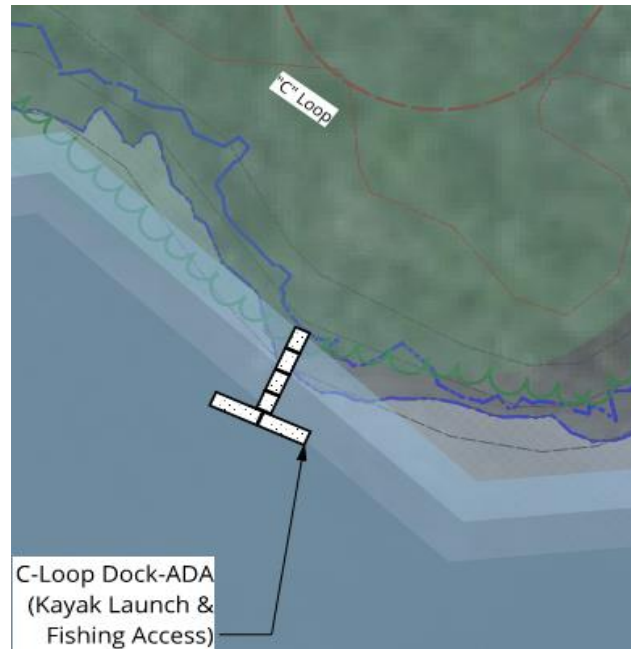
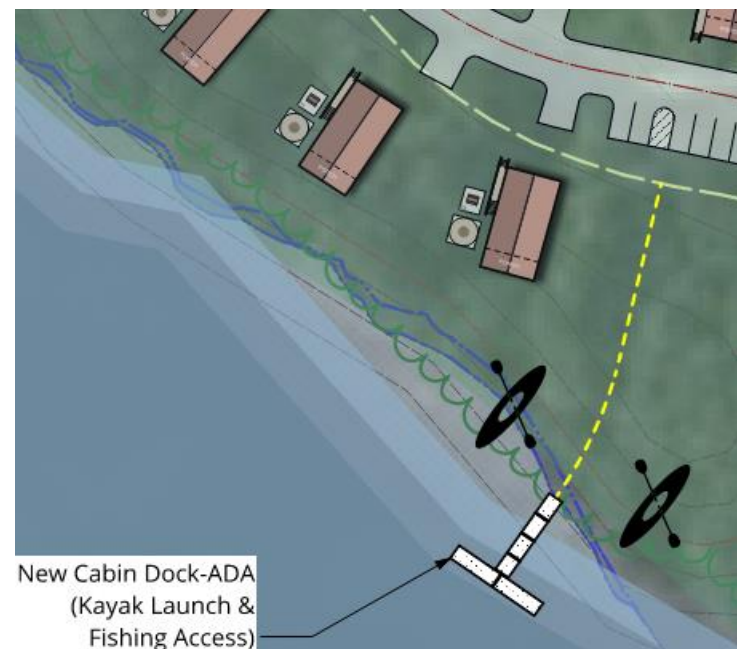
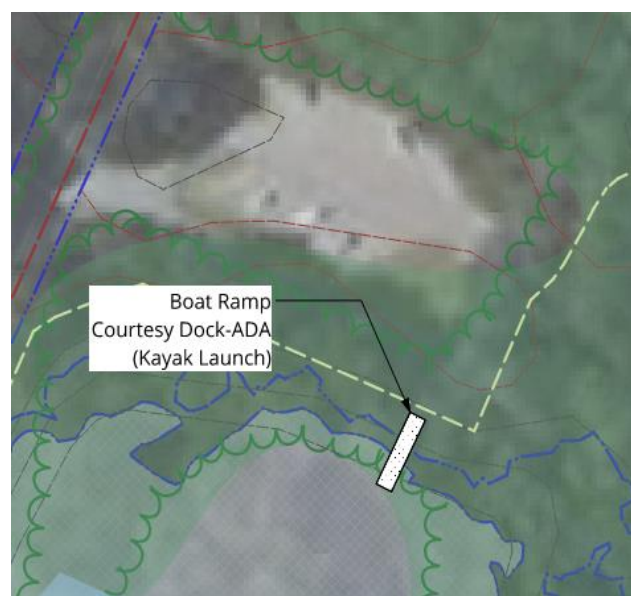
Campground Expansion Schematic



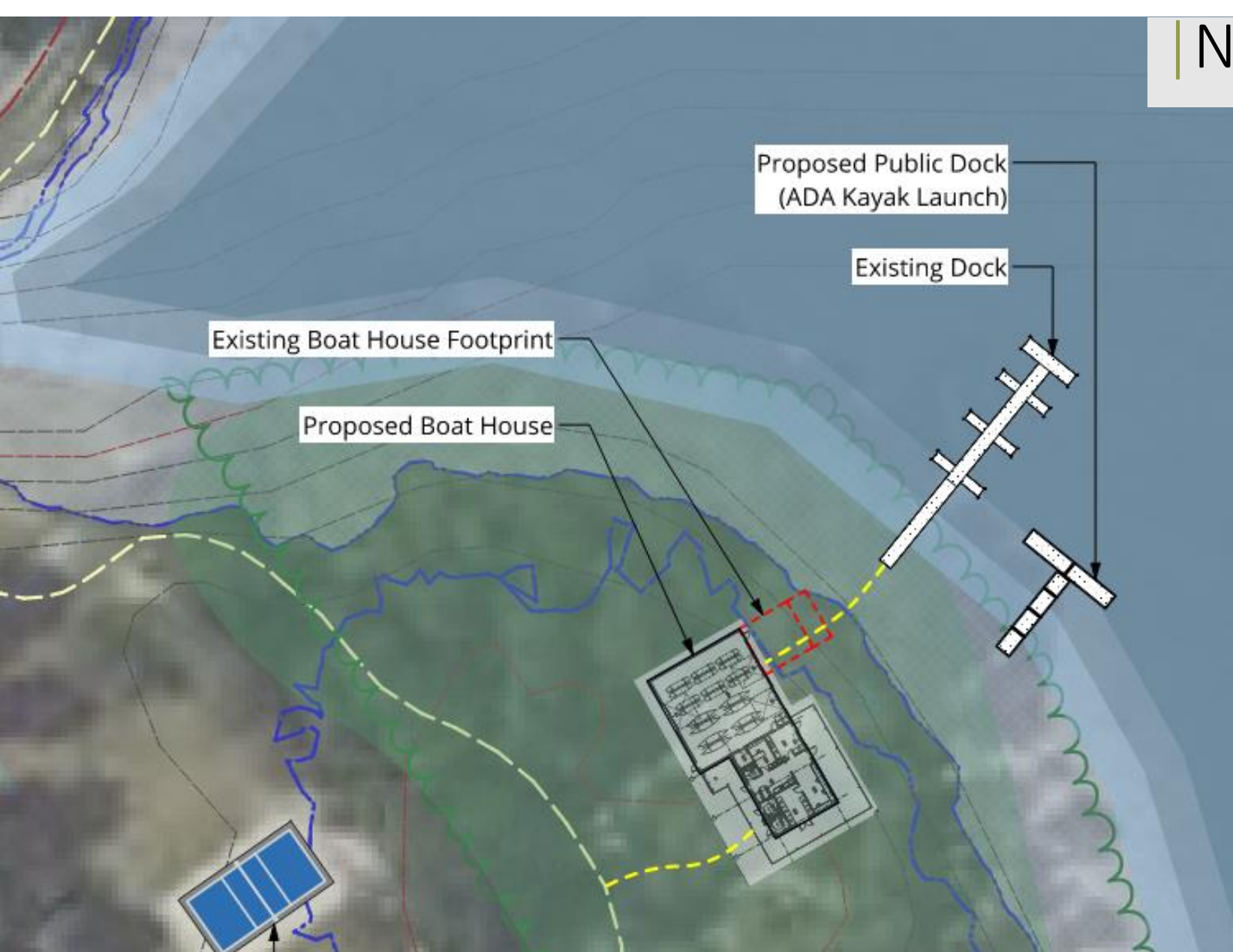
- Conceptual expansion only
- Blends with previous campground expansion
- Larger expansion geared towards the long-term future of the campground
- Additional 21 back-in, 12 pull-thru RV spaces

New Boat Docks

- All docks will be aluminum floating docks
- Select docks will include ADA kayak launches
- Courtesy dock provided at existing boat ramp
- Replacement of the existing A Loop and C Loop docks
- Provides new dock to serve full-service cottage area
- New dock serving the Jason Beach Area

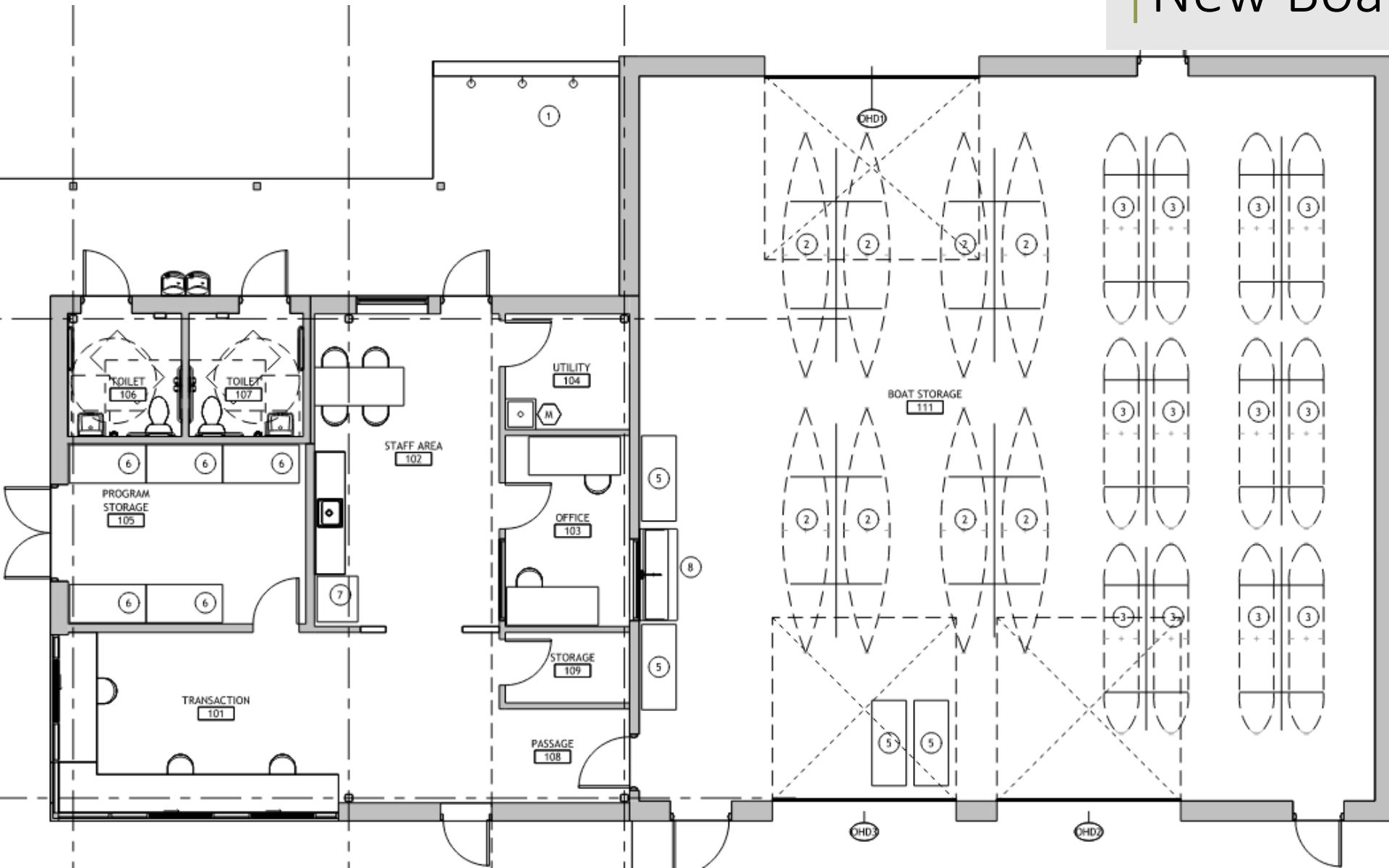


New Boat Rental Facility



- Additional dock to provide access for day users
- ADA kayak launch accessible by park day users
- New building to replace existing boat rental facility
- Expanded building to improve customer service and park operations

New Boat Rental Facility



- Expanded POS for customers and staff
- Public restrooms & outdoor rinse showers
- Easily accessible boat storage
- Staff administrative space
- Additional storage to support park nature programs

New Boat Rental Facility



- Garage doors facilitate access to storage area
- Exterior access to public restrooms



- Large porch provides shade for customers
- Windows provide staff clear line of site and increase park safety



Discussion



Survey Link

<https://app.smartsheet.com/b/form/f6629d22e3ec420bb0e42c0c3b00cb5a>