

DNREC  
White Clay Creek  
Bridge Replacement  
& Stream  
Realignment Project

---



**GPI**

Project location

# White Clay Creek State Park



### Legend

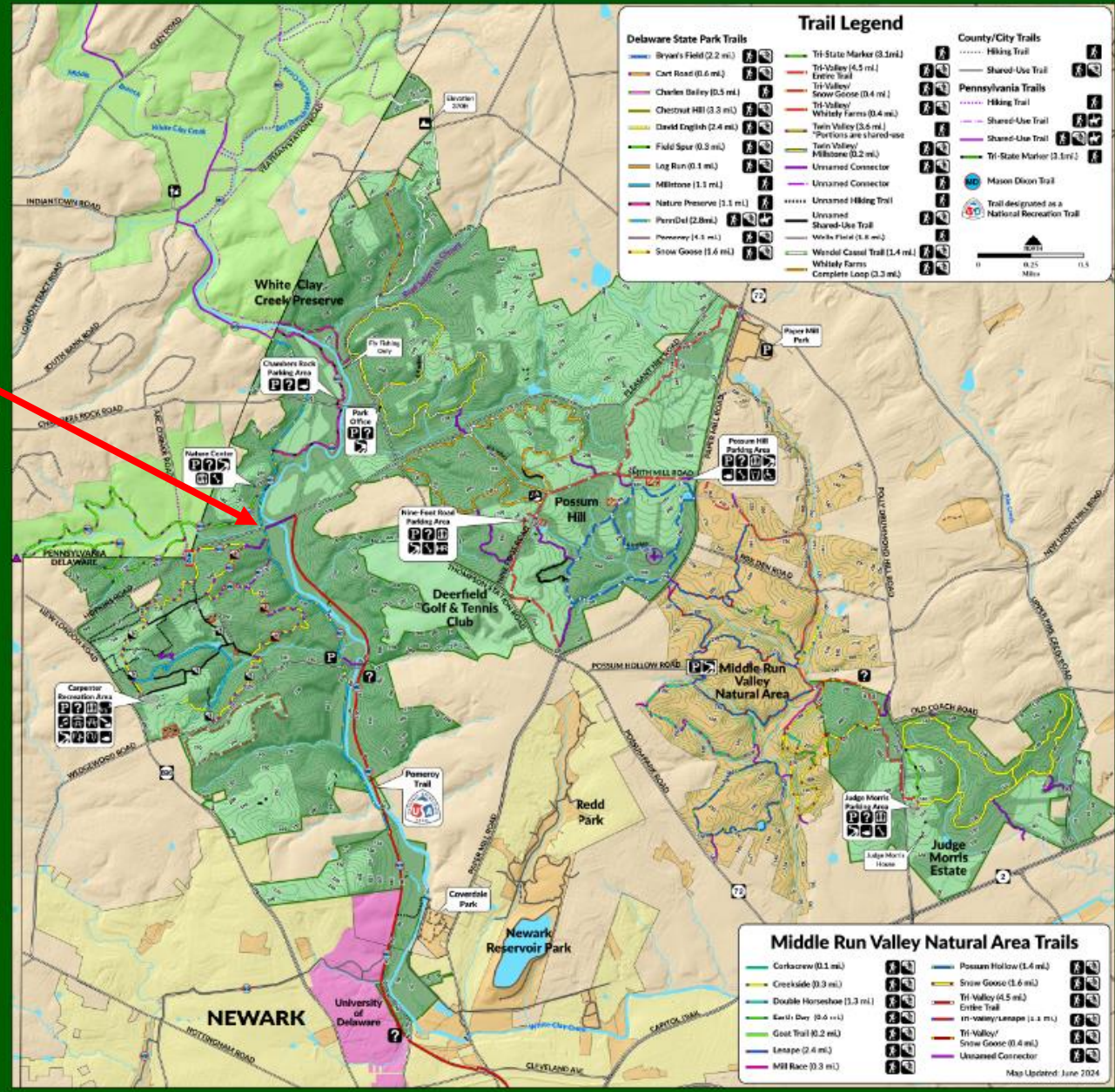
Base Information		Facilities	
State Park Land	Parking	Information	Restrooms
White Clay Creek Preserve (Pennsylvania)	Picnic Pavilion	Picnic Tables	Playground
Forested Park Land	Playground	Amphitheater	Youth Camping
County/City Parks	Trail Head	Disc Golf	Horseshoes
University of Delaware	Disc Golf	Volleyball Court	Fishing
City of Newark	Water Station	PA Park Office and Nature Center	Hayride
Building	PA Park Office and Nature Center	Bike Repair Station	Accessible
Parking Areas	Bike Repair Station		
Restricted			
Dam			
Roads			
ArcCorner Monument			
Mason-Dixon Historic Site			
Tri-State Monument			
Contours (10ft Intervals)			
Highest Point in the Park			

### Contact Information

Park Office: (302) 368-6900  
 Nature Center: (302) 368-6560  
[www.destateparks.com](http://www.destateparks.com)

Deerfield Golf & Tennis Club: (302) 368-6640  
[www.deerfieldgolfclub.com](http://www.deerfieldgolfclub.com)

**DELAWARE STATE PARKS**  
 YOUR OUTDOOR ADVENTURE STARTS HERE



### Trail Legend

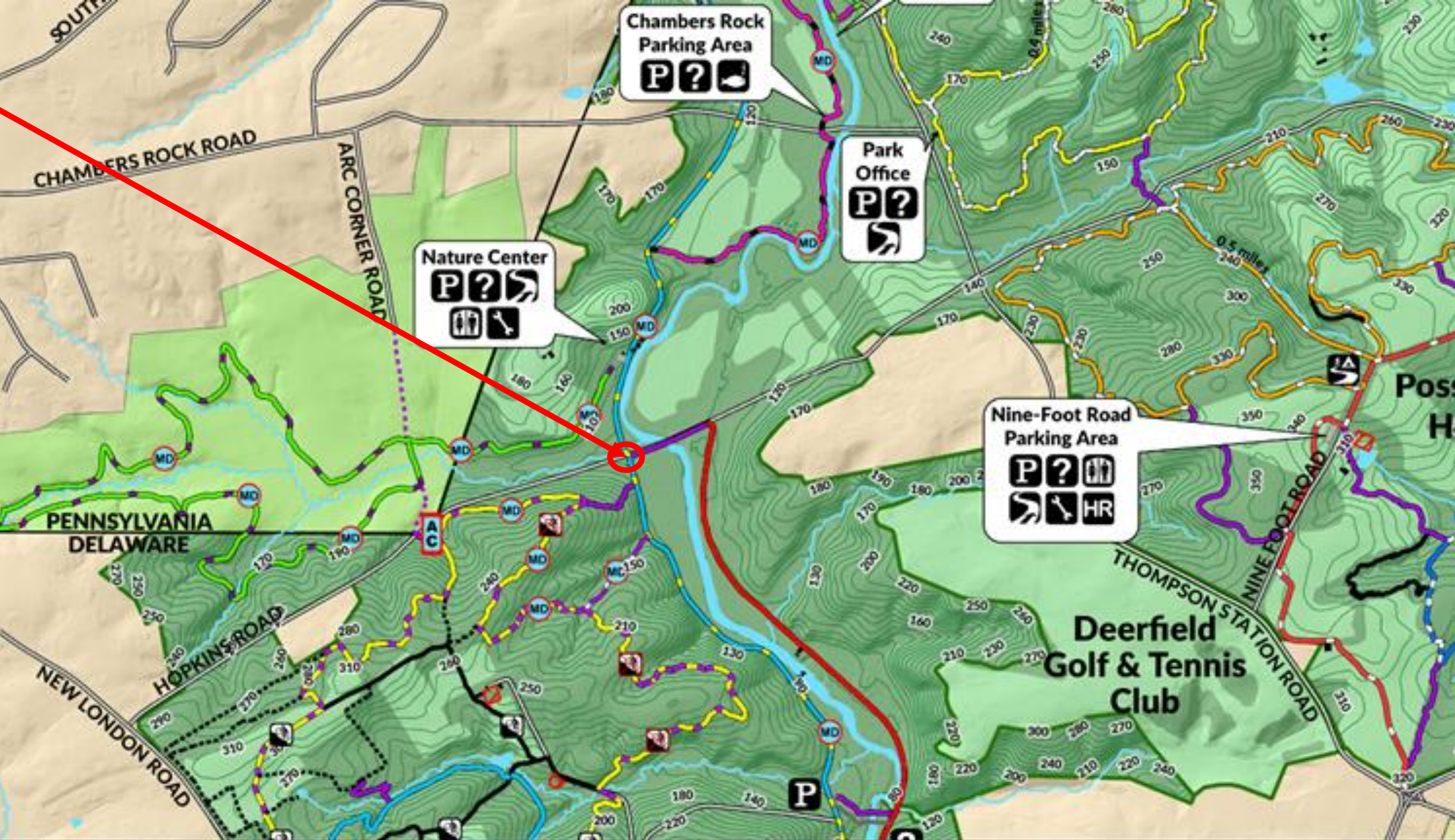
Delaware State Park Trails		County/City Trails	
Bryar's Field (2.2 mi)	Tri-State Marker (3.1mi)	Hiking Trail	Shared-Use Trail
Cart Road (0.6 mi)	Tri-Valley (4.5 mi)	Hiking Trail	Shared-Use Trail
Charles Bailey (0.5 mi)	Lenoir Trail	Hiking Trail	Shared-Use Trail
Chestnut Hill (0.3 mi)	Tri-Valley/ Snow Goose (0.4 mi)	Hiking Trail	Shared-Use Trail
David English (2.4 mi)	Tri-Valley/ Whiskey Farms (0.4 mi)	Hiking Trail	Shared-Use Trail
Field Spur (0.3 mi)	Twin Valley (3.6 mi)	Hiking Trail	Shared-Use Trail
Log Run (0.1 mi)	Turn Valley/ Wilkerson (0.2 mi)	Hiking Trail	Shared-Use Trail
Millstone (1.1 mi)	Unnamed Connector	Hiking Trail	Shared-Use Trail
Nature Preserve (1.1 mi)	Unnamed Connector	Hiking Trail	Shared-Use Trail
PennDel (2.8mi)	Unnamed Hiking Trail	Hiking Trail	Shared-Use Trail
Penney (4.5 mi)	Unnamed Shared-Use Trail	Hiking Trail	Shared-Use Trail
Snow Goose (0.6 mi)	Unnamed Shared-Use Trail	Hiking Trail	Shared-Use Trail
	Whiskey Farms (3.8 mi)	Hiking Trail	Shared-Use Trail
	Whitley Farms Complete Loop (0.3 mi)	Hiking Trail	Shared-Use Trail

### Middle Run Valley Natural Area Trails

Corkscrew (0.1 mi)	Possum Hollow (1.4 mi)	Snow Goose (1.6 mi)
Creekside (0.3 mi)	Tri-Valley (4.5 mi)	Critter Trail
Double Horseshoe (1.3 mi)	Tri-Valley/ Lenape (1.1 mi)	Tri-Valley/ Snow Goose (0.4 mi)
Earl W. Day (0.6 mi)	Unnamed Connector	
Goat Trail (0.2 mi)		
Lenape (2.4 mi)		
Mill Race (0.3 mi)		

Map Updated: June 2024

Project location



# Existing Conditions

- The existing structure consists of a timber plank deck on timber stringers on concrete-capped stone masonry abutments.
- The bridge has a clear span of 15' and the deck is 14'10" wide.
- The existing stream alignment goes through two-180° bends in the 250' reach upstream of the bridge. This section is unstable, and the ongoing erosion is encroaching on the intersection of Tweeds Mill Road and Hopkins Road.



## Proposed Conditions

- Replacement of the bridge and a stream re-alignment and restoration.
- Precast concrete rigid frame with an opening of 20'-0" span by 4'-6" rise.
- The structure will have precast wingwalls and riprap placed at both ends of the rigid frame to protect against scour.
- Upstream of the bridge, 200' of stream will be re-aligned and stabilized by utilizing a series of rock vanes, pools, and rock sills.
- Riffle grade control material is merged into the scour countermeasures around the bridge to complete the stabilization.
- The stream work will continue 35' downstream of the bridge to complete the transition back to the existing channel.

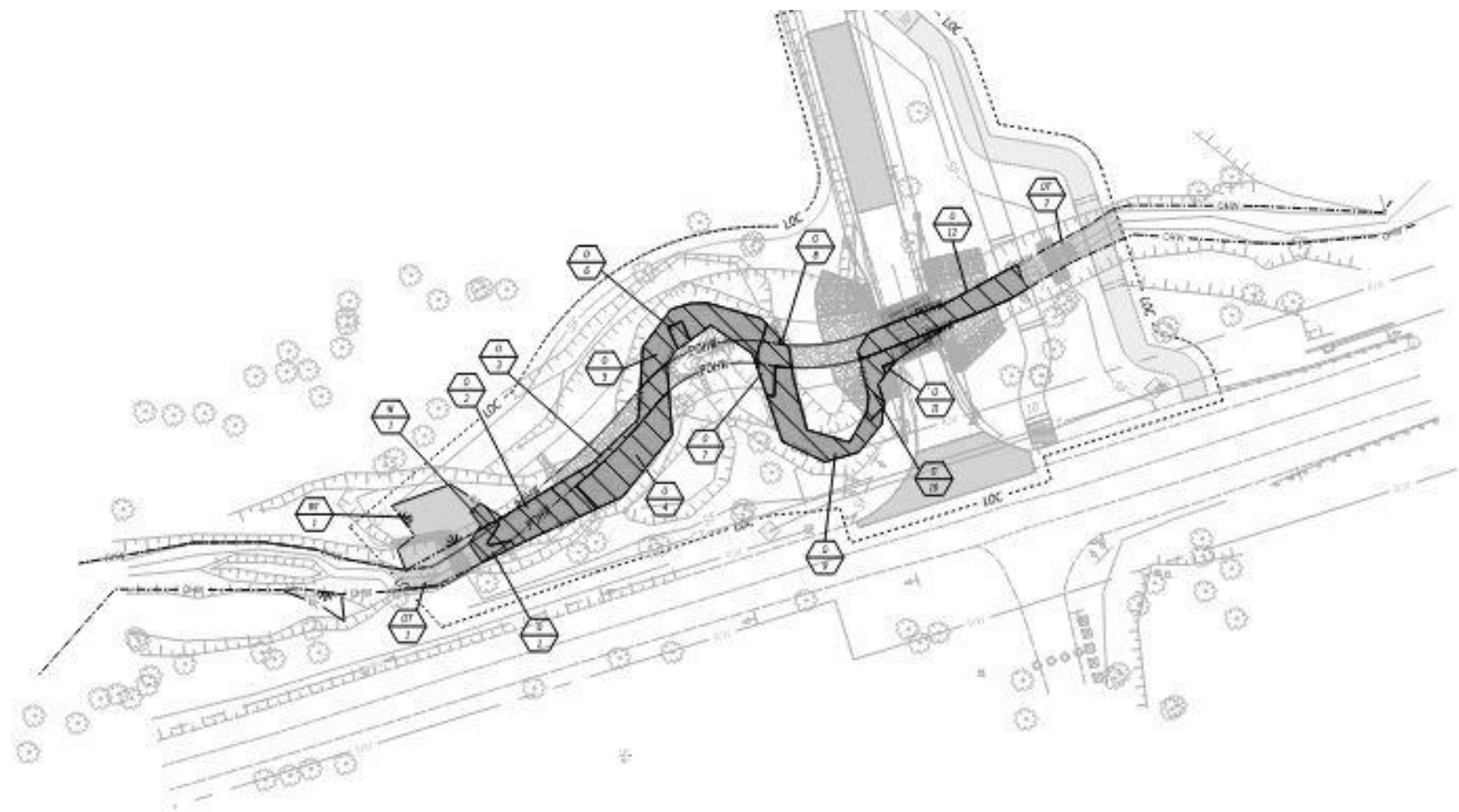


Examples of proposed stream work-Montgomery County, Maryland

09-052,00-007  
STATE OF DELAWARE  
DIVISION OF PARKS AND RECREATION  
DR 184 11  
PB 7259



09-006,00-001  
STATE OF DELAWARE  
DIVISION OF PARKS AND RECREATION  
DR 2012 211



# Pedestrian and Bike Facilities



- Will be dedicated facility to get across the stream-current design TBD
- Possible temporary pedestrian detour



## Detours/Road Closures

---

Entrance to Nature Center: Closed late Fall to early March; no public vehicle access

---

Pedestrian/Bike Detour- TBD, temporary closure possible

---

Hopkins Road will have occasional one lane traffic with flaggers or short duration closures for deliveries

# Time of Year Restrictions

Dusky Dancer (*Argia translata*): Restore stream bottom microhabitat to include sections of riffles

Trout: No in-water work last Monday in March to May 10<sup>th</sup>

Migratory Birds: April 15<sup>th</sup> to August 1<sup>st</sup>

Nesting Tree Birds: April 1<sup>st</sup> to July 31<sup>st</sup>

# Additional Environmental Concerns

Located in the Wild and Scenic River System: In current discussions with National Park Service

Minimizing impacts to the natural ecosystems of the park.

## Section 106 & Archeology

Initial reviews do not indicate any historic or cultural impacts

Continuing required Federal Section 106 Coordination to confirm necessary steps to minimize impacts.



# Schedule

Construction Fall 2026

Anticipated 4 months for  
construction

## Additional Information

Project ideally occurs  
in conjunction with the  
Nature Center Project.

DNREC will give brief  
overview