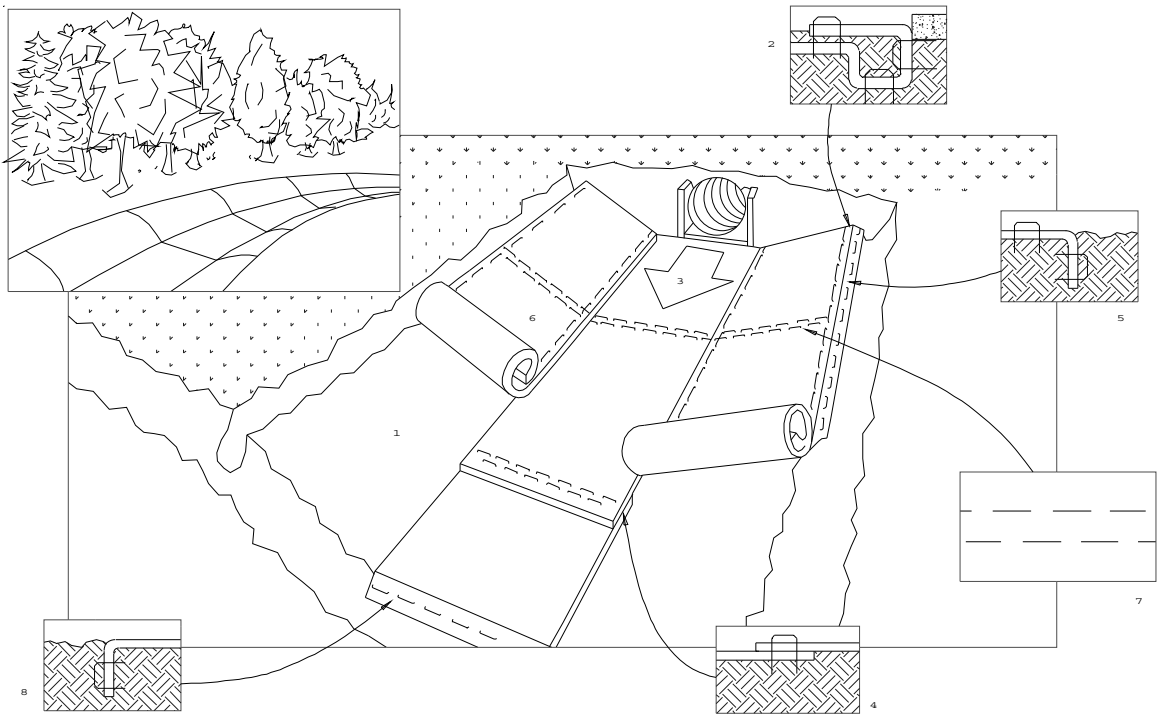


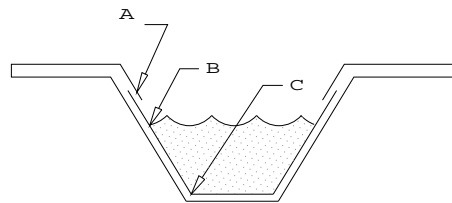
Stabilization Matting - Channel



Perspective

CRITICAL POINTS

- A. Overlaps and seams
- B. Projected waterline
- C. Channel bottom/side slope vertices



Note: Horizontal staple spacing should be altered if necessary to allow staples to secure the critical points along the channel surface.

Use manufacturer's recommendations for stapling patterns for channel installations.

Source:

Adapted from
North American Green, Inc.

Symbol:



Detail No.

DE-ESC-3.4.6.2

Sheet 1 of 3

Effective FEB 2019

Stabilization Matting - Channel

Construction Notes:

1. Prepare soil before installing matting, including application of lime, fertilizer, and seed.
2. Begin at the top of the channel by anchoring the mat in a 6" deep X 6" wide trench. Backfill and compact the trench after stapling.
3. Roll center mat in direction of water flow on bottom of channel.
4. Place mats end over end (shingle style) with a 6" overlap, use a double row of staggered staples 4" apart to secure mats.
5. Full Length edge of mats at top of side slopes must be anchored in 6" deep X 6" wide trench; backfill and compact the trench after stapling.
6. Mats on side slopes must be overlapped 4" over the center mat and stapled.
7. In high flow channel applications, a staple check slot is recommended at 30 to 40 foot intervals. Use a row of staples 4" apart over entire width of the channel. Place a second row 4" below the first row in a staggered pattern.
8. The terminal end of the mats must be anchored in a 6" X 6" wide trench. Backfill and compact the trench after stapling.

Source:

Adapted from
North American Green, Inc.

Symbol:

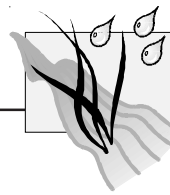


Detail No.

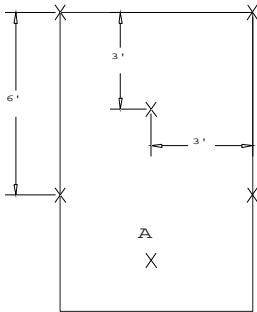
DE-ESC-3.4.6.2

Sheet 2 of 3

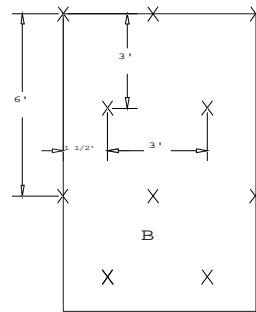
Effective FEB 2019



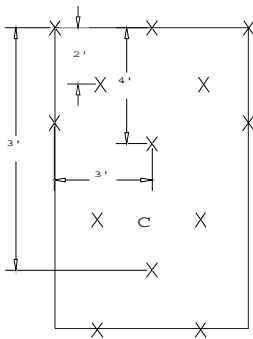
Stabilization Matting - Channel



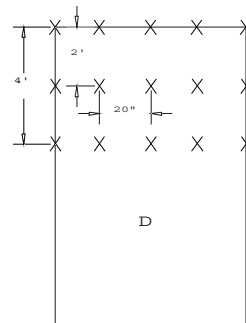
0.7 Staples per Sq. Yd.



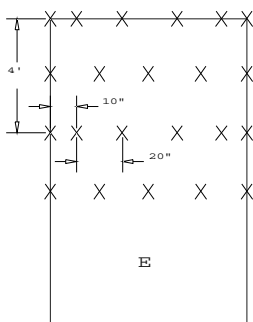
1.2 Staples per Sq. Yd.



1.75 Staples per Sq. Yd.



3.5 Staples per Sq. Yd.



3.75 Staples per Sq. Yd.

NOTE: These patterns are provided for general guidance only. They shall not be used as a substitute for manufacturer's recommendations.

Stapling Patterns

Source:

Adapted from
North American Green, Inc.

Symbol:



Detail No.

DE-ESC-3.4.6.2

Sheet 3 of 3

Effective FEB 2019