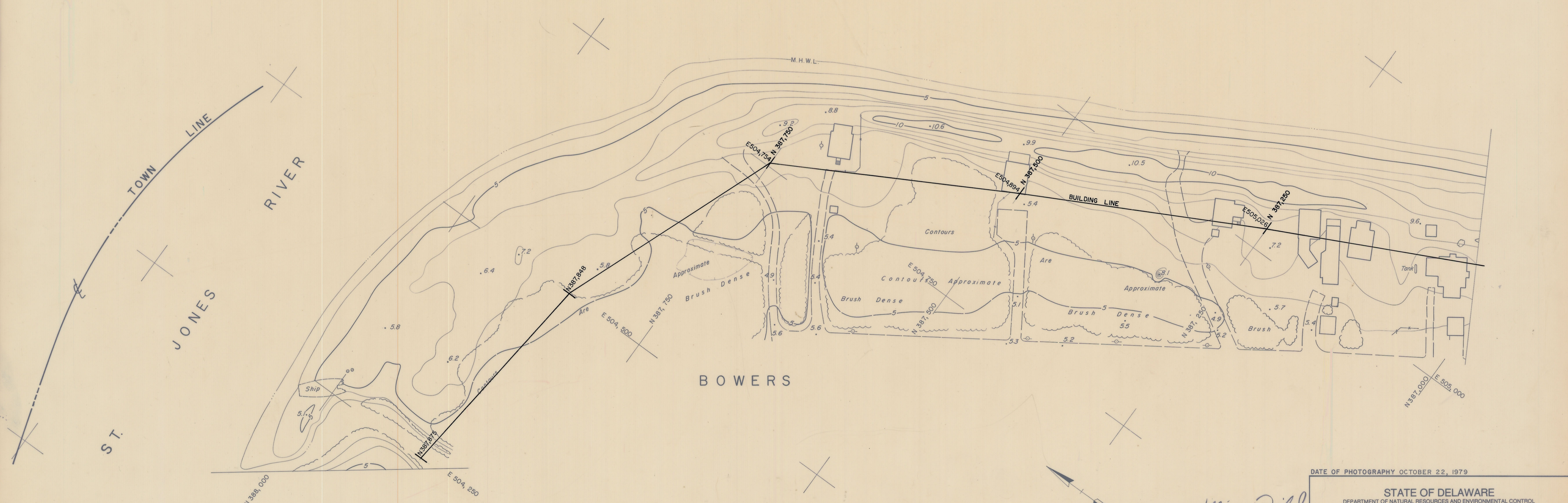


DELAWARE BAY



DATE OF PHOTOGRAPHY OCTOBER 22, 1979

APPROVED: *William W. Dwyer*
PROFESSIONAL LAND SURVEYOR

STATE OF DELAWARE
DEPARTMENT OF NATURAL RESOURCES AND ENVIRONMENTAL CONTROL
DIVISION OF SOIL AND WATER CONSERVATION
TOPOGRAPHIC MAPPING OF DELAWARE BEACHES
PICKERING BEACH TO CAPE HENLOPEN

PREPARED BY
PHOTO SCIENCE, INC.
GAITHERSBURG, MARYLAND

VANDEMARK & LYNCH, INC.
CONSULTANTS-ENGINEERS-SURVEYORS
4305 MILLER ROAD - P.O. BOX 2047
WILMINGTON, DELAWARE 19899

DATE	SEPTEMBER 1979	DRAWING NO	15479-19555-B
SCALE	1" = 50'	SHEET	73 OF 79