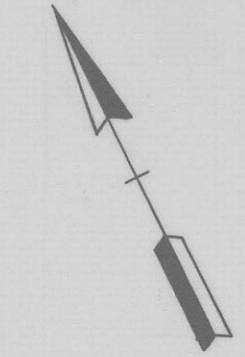
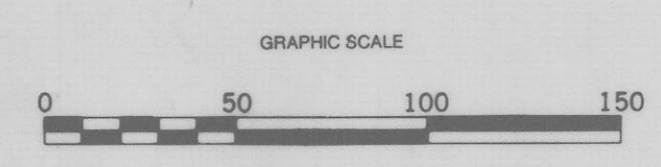
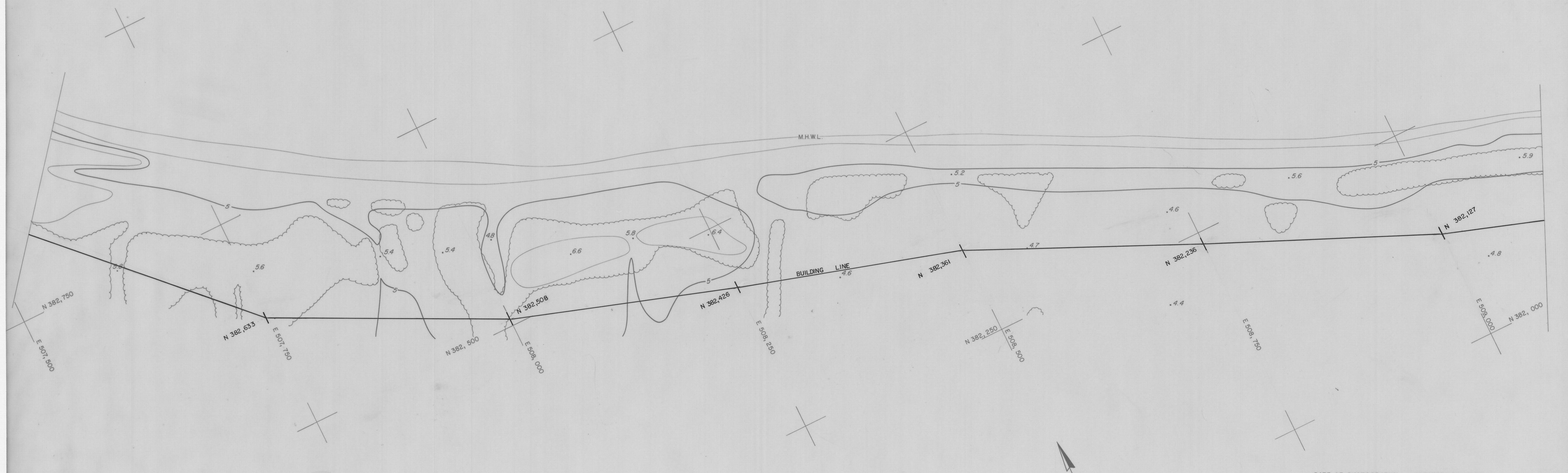




DELAWARE BAY



APPROVED: *Thomas E. Lynch*
 PROFESSIONAL LAND SURVEYOR

PREPARED BY
PHOTO SCIENCE, INC.
 GAITHERSBURG, MARYLAND

VANDEMARK & LYNCH, INC.
 CONSULTANTS-ENGINEERS-SURVEYORS
 4305 MILLER ROAD - P.O. BOX 2047
 WILMINGTON, DELAWARE 19899

DATE OF PHOTOGRAPHY: OCTOBER 22, 1979			
STATE OF DELAWARE DEPARTMENT OF NATURAL RESOURCES AND ENVIRONMENTAL CONTROL DIVISION OF SOIL AND WATER CONSERVATION TOPOGRAPHIC MAPPING OF DELAWARE BEACHES PICKERING BEACH TO CAPE HENLOPEN			
DATE	SEPTEMBER 1979	DRAWING NO	15479-19555-B
SCALE	1" = 50'	SHEET	69 OF 79