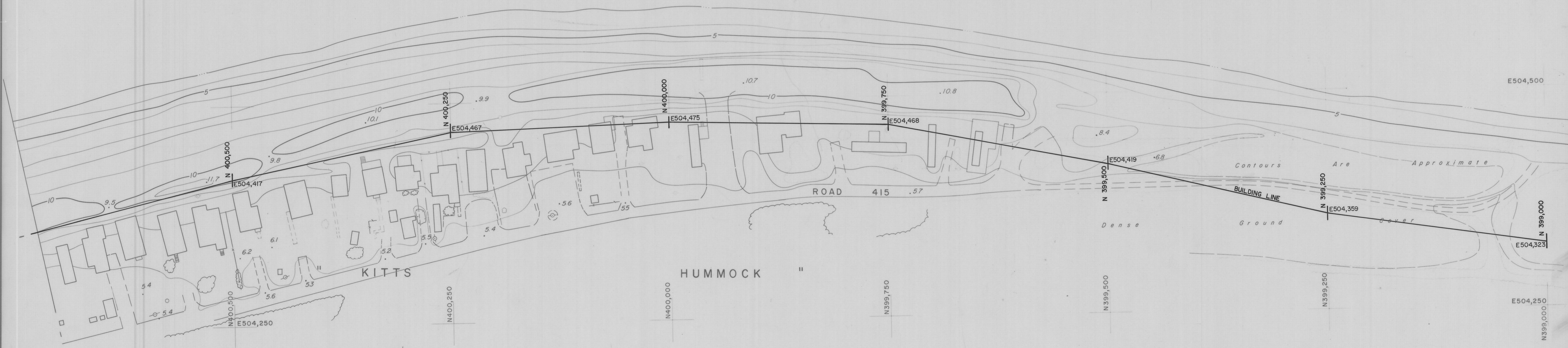
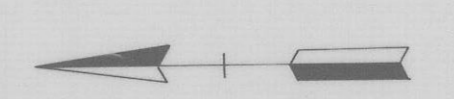
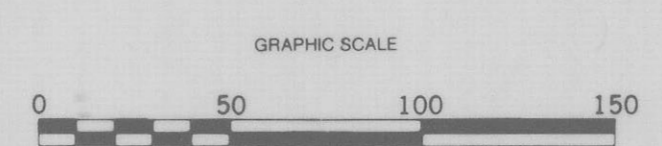


DELAWARE BAY



DATE OF PHOTOGRAPHY: OCTOBER 22, 1979

STATE OF DELAWARE
DEPARTMENT OF NATURAL RESOURCES AND ENVIRONMENTAL CONTROL
DIVISION OF SOIL AND WATER CONSERVATION
TOPOGRAPHIC MAPPING OF DELAWARE BEACHES
PICKERING BEACH TO CAPE HENLOPEN



APPROVED *William W. Dalrymple*
PROFESSIONAL LAND SURVEYOR

PREPARED BY
PHOTO SCIENCE, INC.
GAITHERSBURG, MARYLAND

VANDEMARK & LYNCH, INC.
CONSULTANTS-ENGINEERS-SURVEYORS
4305 MILLER ROAD - P.O. BOX 2047
WILMINGTON, DELAWARE 19899

DATE	SEPTEMBER 1979	DRAWING NO	15479-19555-B
SCALE	1" = 50'	SHEET	74 OF 79