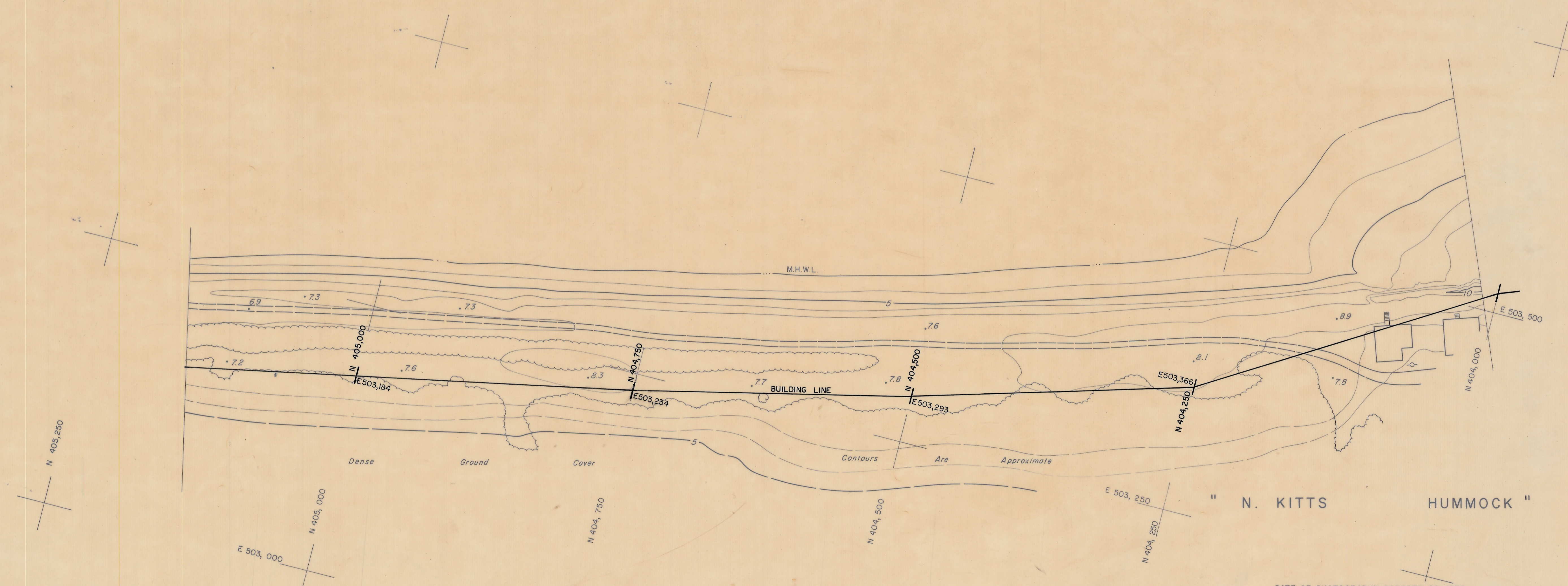
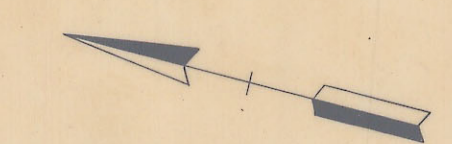
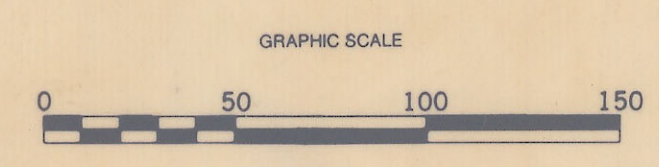


DELAWARE BAY



DATE OF PHOTOGRAPHY OCTOBER 22, 1979

STATE OF DELAWARE
 DEPARTMENT OF NATURAL RESOURCES AND ENVIRONMENTAL CONTROL
 DIVISION OF SOIL AND WATER CONSERVATION
 TOPOGRAPHIC MAPPING OF DELAWARE BEACHES
 PICKERING BEACH TO CAPE HENLOPEN



APPROVED: *Thomas S. Latham*
 PROFESSIONAL LAND SURVEYOR

PREPARED BY
PHOTO SCIENCE, INC.
 GAITHERSBURG, MARYLAND

VANDEMARK & LYNCH, INC.
 CONSULTANTS-ENGINEERS-SURVEYORS
 4305 MILLER ROAD - P.O. BOX 2047
 WILMINGTON, DELAWARE 19899

DATE	SEPTEMBER 1979	DRAWING NO	15479-19555-B
SCALE	1" = 50'	SHEET	77 OF 79