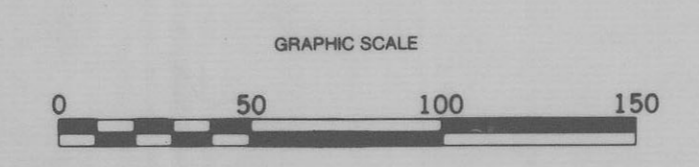
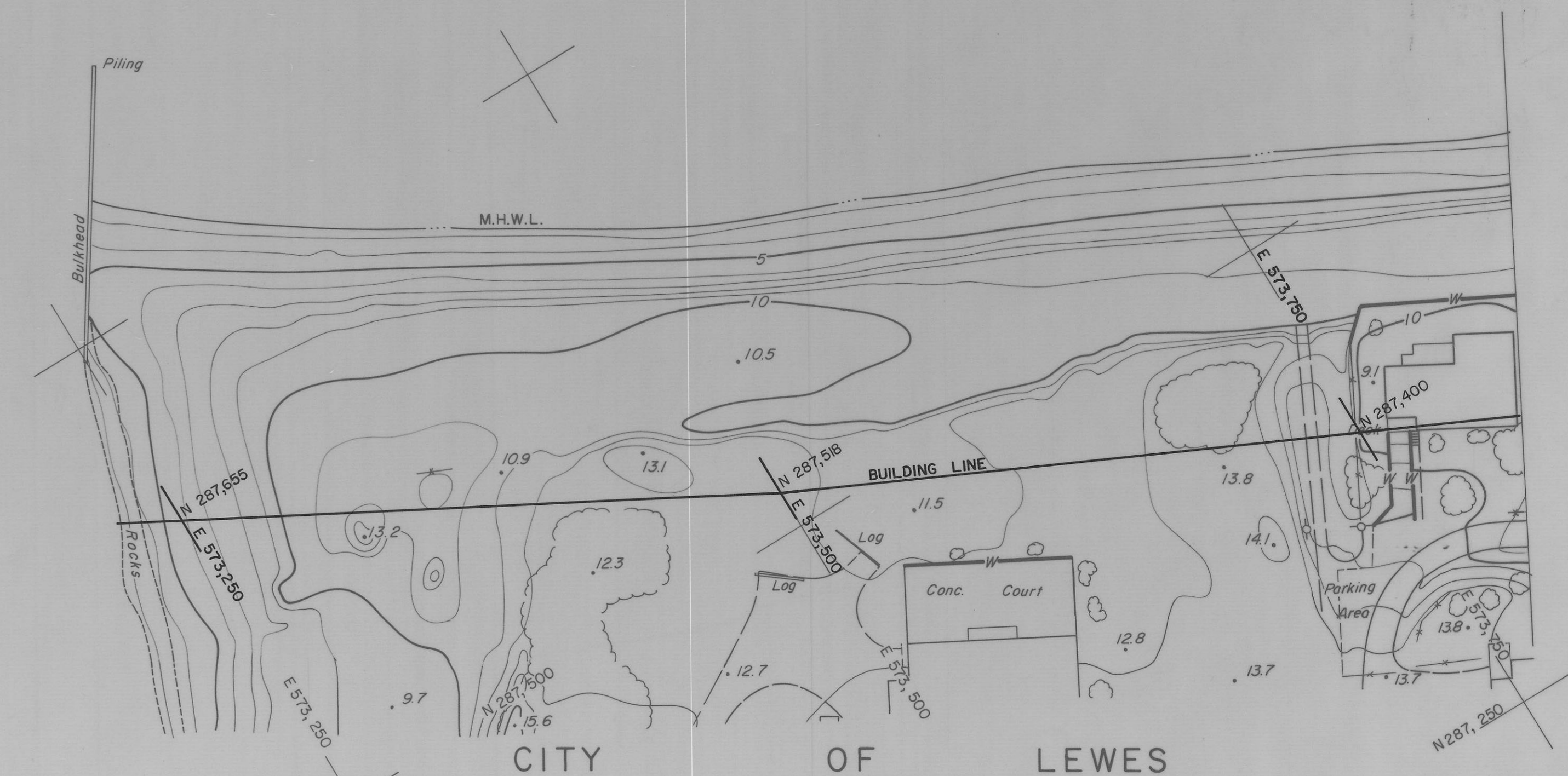
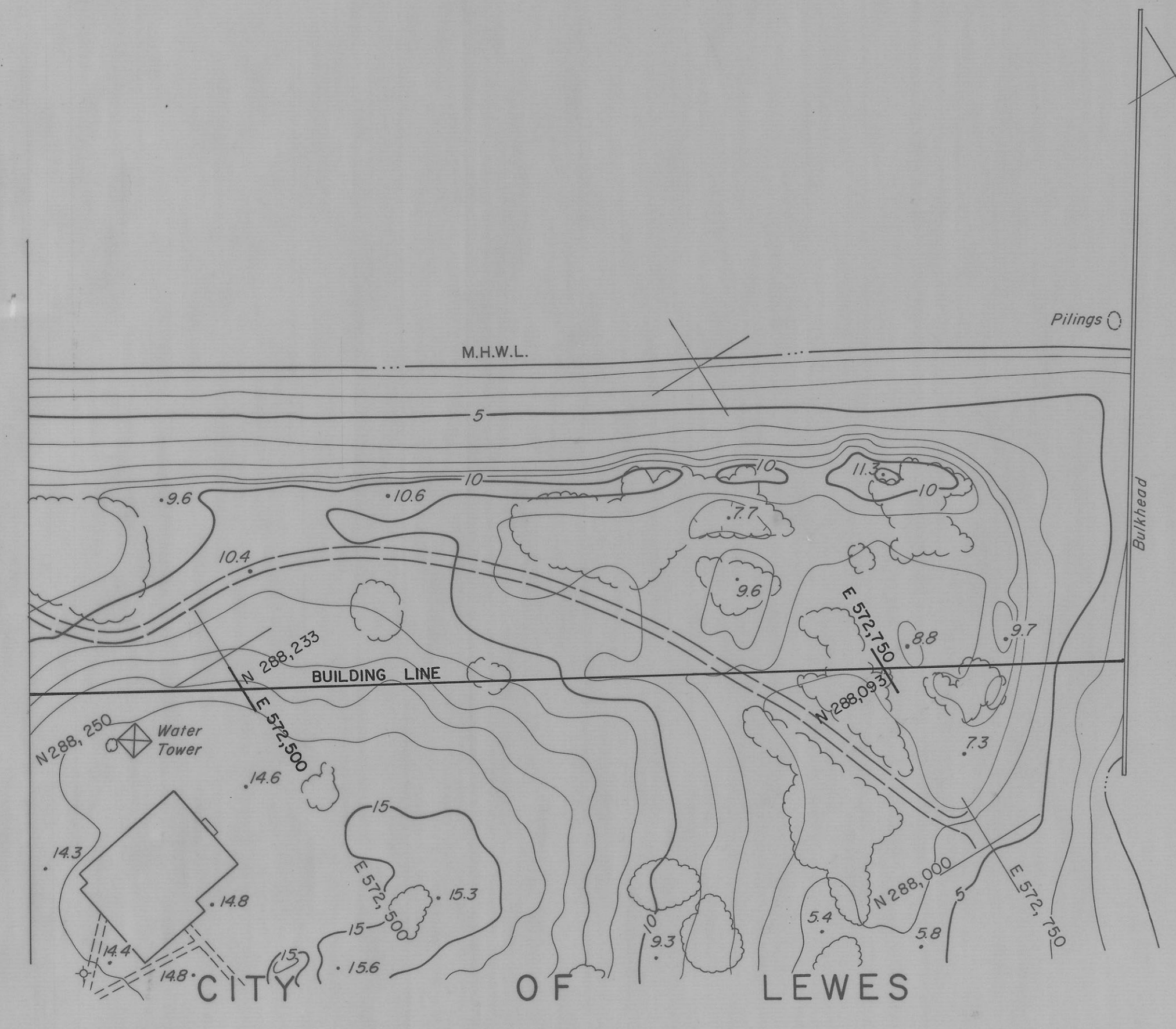


DELAWARE BAY

INLET ROOSEVELT



PREPARED BY
PHOTO SCIENCE, INC.
GAITHERSBURG, MARYLAND

APPROVED: *William W. Dillig*
PROFESSIONAL LAND SURVEYOR

VANDEMARK & LYNCH, INC.
CONSULTANTS-ENGINEERS-SURVEYORS
4305 MILLER ROAD - P.O. BOX 2047
WILMINGTON, DELAWARE 19899

DATE OF PHOTOGRAPHY: AUGUST 31, 1979

STATE OF DELAWARE
DEPARTMENT OF NATURAL RESOURCES AND ENVIRONMENTAL CONTROL
DIVISION OF SOIL AND WATER CONSERVATION
TOPOGRAPHIC MAPPING OF DELAWARE BEACHES
PICKERING BEACH TO CAPE HENLOPEN

DATE	SEPTEMBER 1979	DRAWING NO	15479-19555-B
SCALE	1" = 50'	SHEET	12 OF 79