

THE FIRST STATE WATERMARK



Delaware's Floodplain Management Newsletter

May, 2010

Volume 16, Number 1

FLOOD STUDIES UNDERWAY

Delaware Coastal Study

The Delaware Department of Natural Resources and Environmental Control (DNREC) is working with the Federal Emergency Management Agency (FEMA) to produce new flood risk maps for Delaware's coastline and many streams in Sussex County. There are two main outcomes of these studies. First, to update coastal flood risk maps for the Atlantic Ocean, Delaware Bay and Inland Bays. Also, flood studies are being performed for the first time on 70 miles of streams in central and western Sussex County which use accurate topography to map floodplains.

The FEMA Region III office in Philadelphia is the lead agency on the coastal study, which extends from Fenwick Island to Delaware City and includes inland bays and tributaries. The coastal study is being performed in two phases. The first phase of the study is a storm surge analysis under development by the United States Army Corp of Engineer's (USACE) Engineer Research and Development Center (ERDC). The storm surge analysis, which will determine new stillwater elevations for the 10-, 50-, 100-, and 500-year return periods, is expected to be complete at the end of 2010. FEMA will perform the second phase of the study, which involves overland wave height analysis and hazard mapping. The wave height analysis for Delaware is expected to be completed in the spring of 2011.

DNREC will be engaged with FEMA and its contractors on the data and methodology used in both phases of the coastal study. The results of the storm surge and wave height analyses will be used to generate floodplain boundaries, and coastal high hazard areas (V-Zones) for the coastal influenced areas of the state. FEMA will then map these floodplain boundaries onto new Digital Flood Insurance Rate Maps (DFIRMs) for the coastal influenced areas and will prepare new Flood Insurance Rate Studies (FISs) for each county.

Inland Sussex County

The flood study for central and western Sussex County is complete and draft maps will be available for the public to review shortly. FEMA will be coordinating with DNREC to plan outreach meetings for each County, beginning in the summer of 2010 to discuss the draft floodplain maps for central and western Sussex County. If you have any questions about this coastal study, please contact Mike Powell at (302) 739-9921 or michael.powell@state.de.us

New Castle County

Flood studies are currently underway for both the Appoquinimink and Muderkill watersheds in New Castle County. See the attached Maps at the end of the newsletter for details of the study areas. Preliminary maps for these areas should be complete by the end of 2010.

FLOODPLAIN ORDINANCE REVIEW CHECKLIST

As part of the national effort to update the Flood Insurance Rate Maps (FIRMs), the DNREC must conduct a compliance review of municipal floodplain ordinances as required by FEMA to ensure consistency between the local ordinances and requirements of the NFIP. As a result, DNREC will make recommendations to some municipalities for amendments to their floodplain ordinances. Affected municipalities will need to adopt these revisions prior to the effective date of the new maps in order to continue participating in the NFIP.

A Floodplain Ordinance Checklist has been developed to help communities verify they have the necessary language in their codes and ordinances. We will be sending each community a copy of the Checklist by the end of May. We ask that you fill it out and return it to us with a copy of your currently adopted Floodplain Ordinance by July 1st.

FEMA PUBLISHES NEW FEE SCHEDULE

On December 14, 2009, the Federal Emergency Management Agency (FEMA) published a notice in the Federal Register announcing that the fee schedules for processing certain types of requests for changes to the National Flood Insurance Program (NFIP) maps, Flood Insurance Study (FIS) technical and administrative support data, and NFIP map and insurance products are changing. The revised fee schedules went into effect on January 13, 2010. For more information, visit FEMA's Flood Hazard Mapping website at www.fema.gov/plan/prevent/fhm/frm_fees.shtm. This includes changes to the application fees for LOMA's and LOMR's.

eLOMA PROCESS

FEMA has developed eLOMA, a web-based application that provides Licensed Professionals to submit simple Letter of Map Amendment (LOMA) requests. It reduces the determination time for basic LOMA's from up to 60 days to just minutes in most instances. To register for an eLOMA account or learn more about the application, visit <https://hazards.fema.gov>

Under "Tools For Professionals" in the top left corner click on "Learn about eLOMA."

STATUS OF MAP CHANGES ON FLOOD HAZARD MAPPING

Did you know that you can view the status of map change requests? The information is updated daily from the Mapping Information Platform (MIP) and includes Letters of Map Change (LOMCs), Flood Insurance Studies, and proposed modified Base Flood Elevations. To view information for a particular community, select the state and then the community you are interested in from the drop-down list. You can also search using a specific case number. The Status of Map Change Requests can be found at <http://www.fema.gov/plan/prevent/fhm/status.shtm>.

FMAC + MSC = FMIX

The Contact Center for the Map Service Center (MSC) has been consolidated into the current FEMA Map Assistance Contact Center (FMAC) to increase efficiency as it will provide a one-stop shop for a variety of information, products, services and tools that support the National Flood Insurance Program (NFIP).

The toll-free number currently used by the FMAC, 1-877-FEMA MAP (1-877-336-2627) should be used instead of the MSC number (1-800-358-9616). This MSC number will still be in use for a while, but will be discontinued by the end of April 2010.

In addition, to reflect the consolidation of the contact centers the name of the FEMA Map Assistance Center (FMAC) will change to the **FEMA Map Information eXchange, or FMIX**. As stated, the phone number for the FMIX is the same as before, **1-877-FEMA MAP (1-877-336-2627)**.

This change went into effect as of Monday March 1, 2010.

REMINDER

The one year grace period for using the February 28, 2009 Elevation Certificate has expired. Anything certified on or after April 1, 2010 must be on the Elevation Certificate dated March 31, 2012.

UPCOMING TRAINING OPPORTUNITIES

FEMA – EMI COURSES

E273 - Managing Floodplain Development thru the NFIP.

October 11 – 14, 2010

January 24 – 27, 2011

E278 - NFIP/Community Rating System

November 8 – 11, 2010

E386 - Residential Coastal Construction

August 15 – 18, 2010

E194 Advanced Floodplain Management Concepts

February 14 – 17, 2011

DNREC

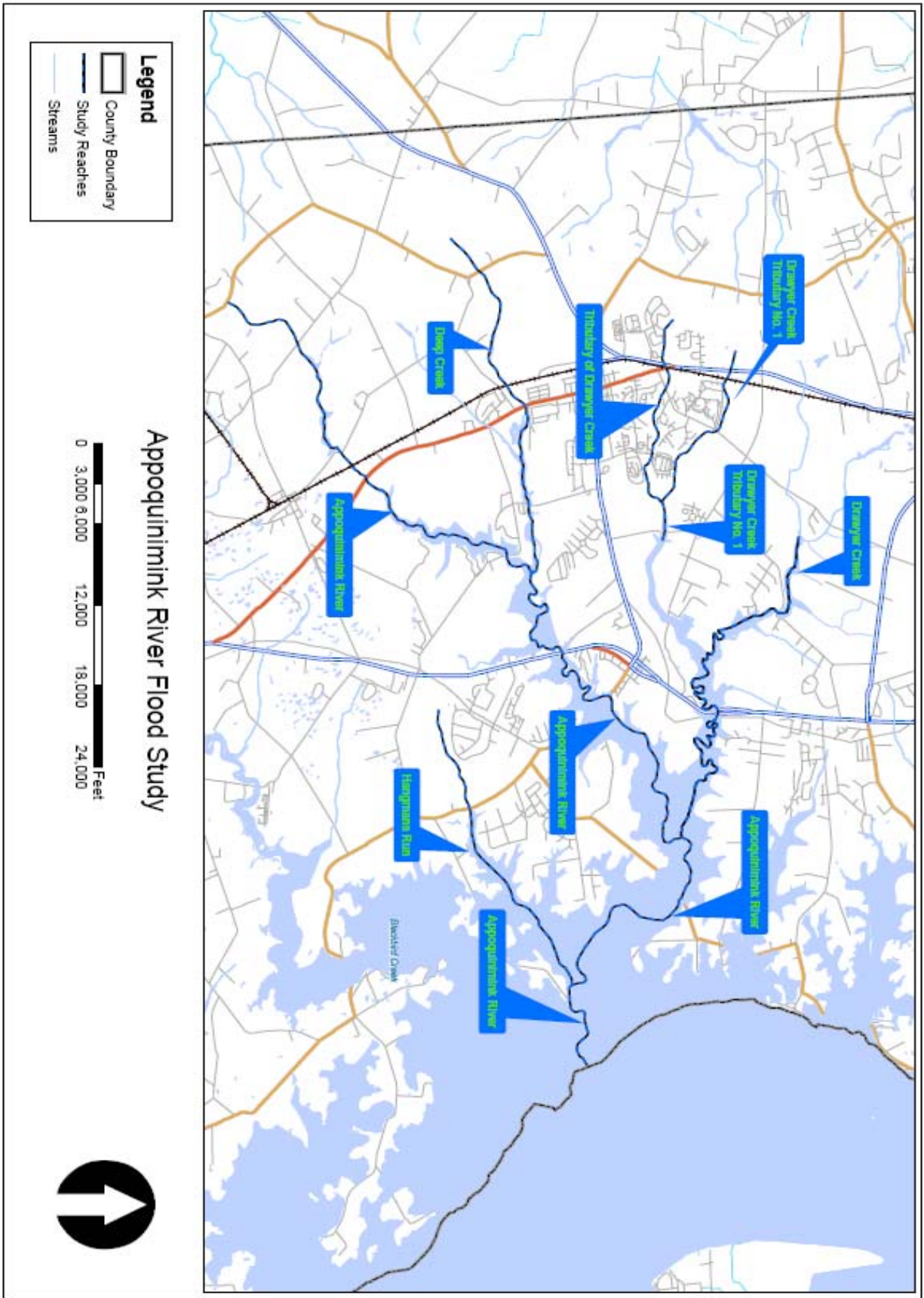
If you are interested in taking the Certified Floodplain Manager (CFM) exam, please contact Greg Williams at Gregory.Williams@state.de.us. We will schedule a time to proctor exam once we have enough people interested.

DNREC WEBSITE:

Please check out the Division of Soil & Water's website to learn more about the National Flood Insurance Program, FEMA, and other important reference material: www.swc.dnrec.delaware.gov/Drainage/Pages/Flooding.aspx

COASTAL RESILIENCY WEBSITE:

To learn more about Coastal Hazards and Community Resiliency in Delaware visit: www.swc.dnrec.delaware.gov/Shoreline/Documents/Coastal%20Resiliency/coastal_hazards_community_resiliency.pdf

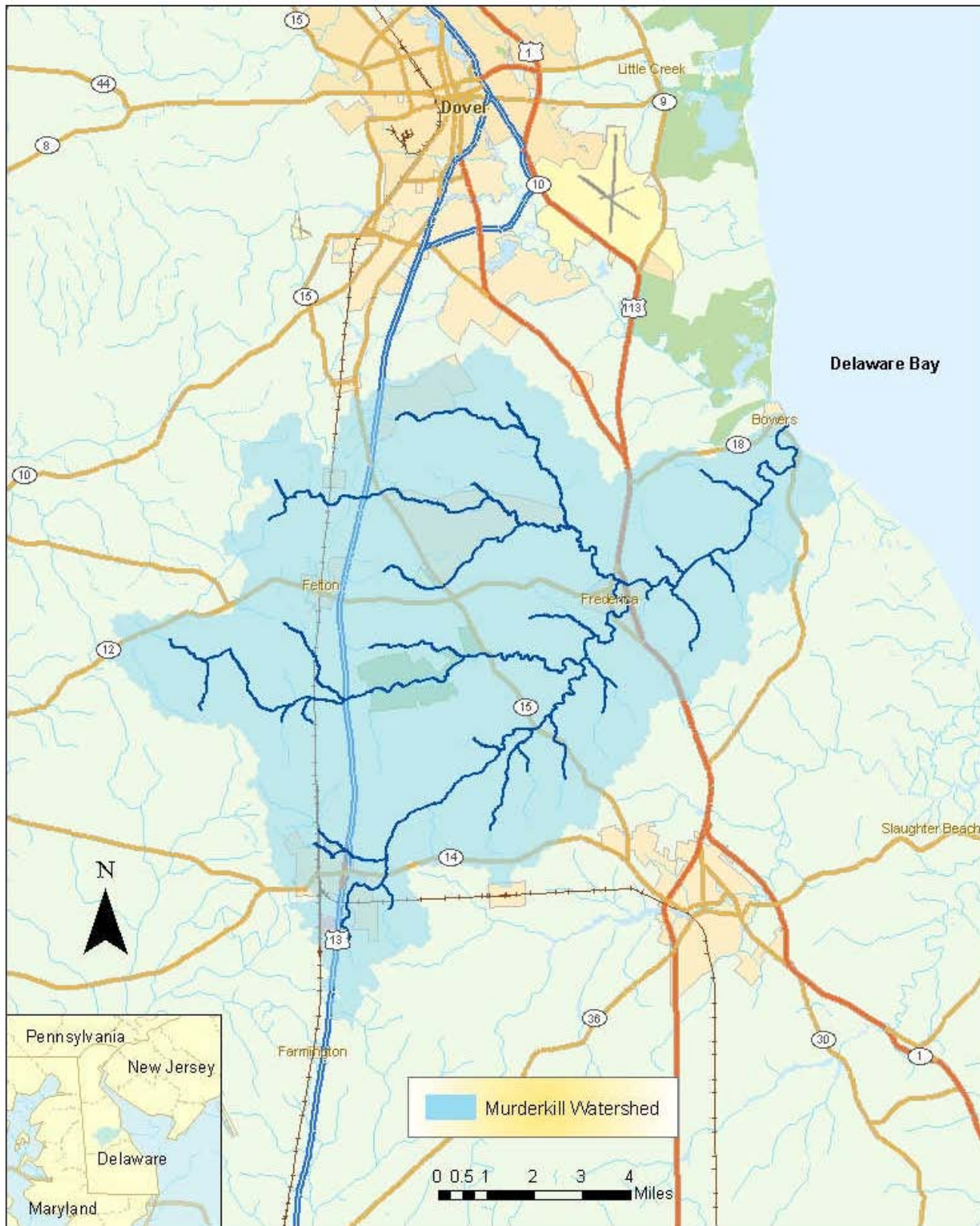


Legend

- County Boundary
- Study Reaches
- Streams

Appoquinimink River Flood Study





If you wish to receive this newsletter or wish to be removed from the mailing list, please see below:

How to reach the First State Watermark:

Telephone: (302) 739-9921

Fax: (302) 739-6724

E-mail:

Gregory.Williams@state.de.us

Michael.Powell@state.de.us